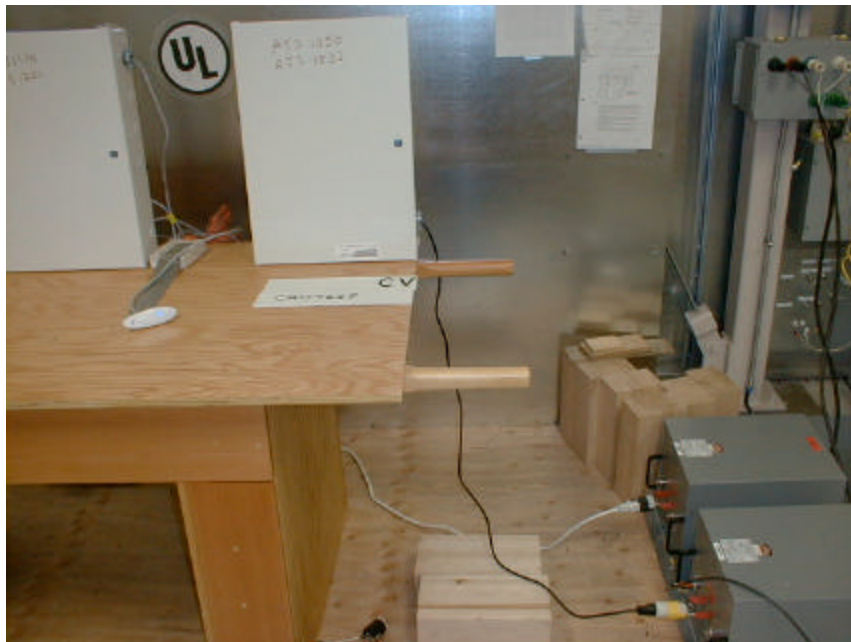


## 6 CONDUCTED AND RADIATED MEASUREMENT PHOTOS

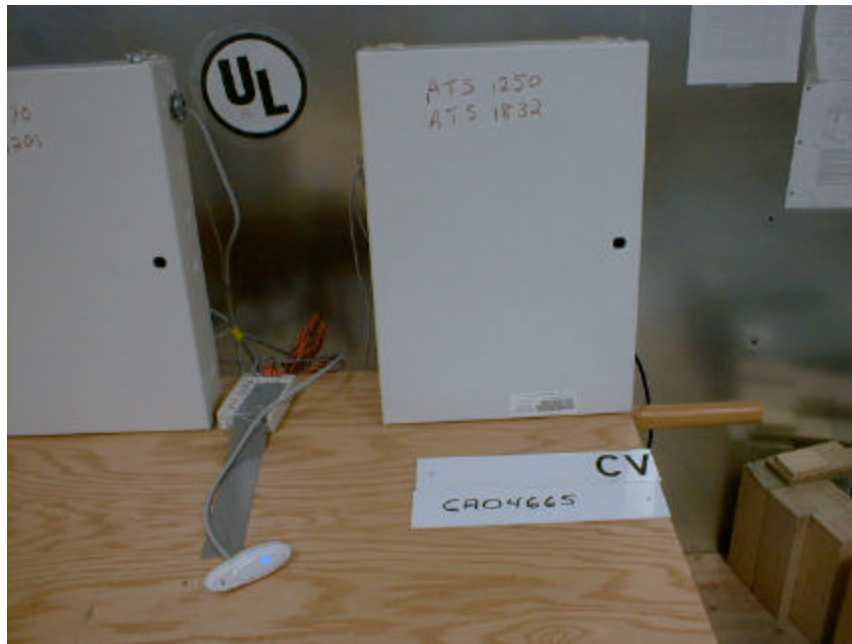
**Figure 6.1 - Conducted Voltage Emissions Measurement Configuration (AL-1191)**



**Figure 6.2 - Conducted Voltage Emissions Measurement Configuration (AL-1191)**



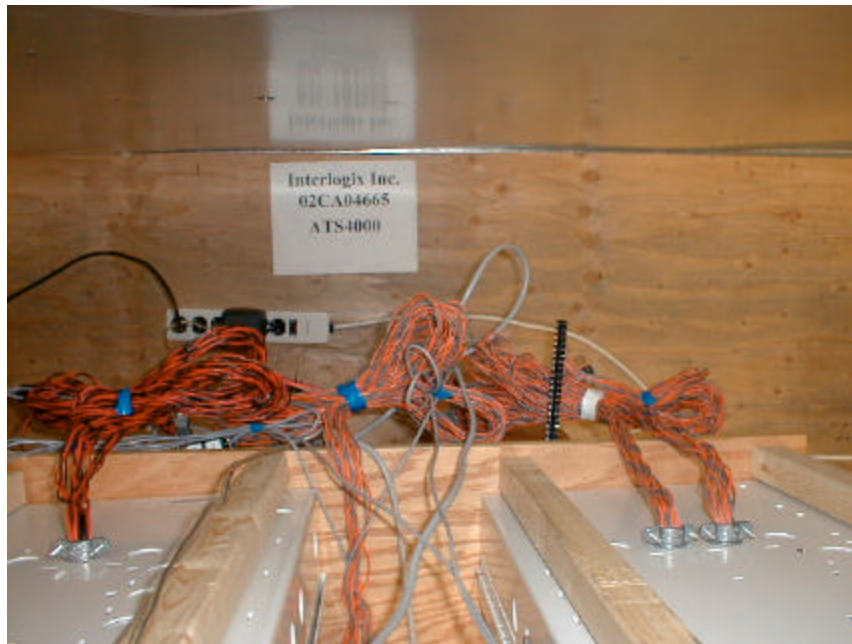
**Figure 6.3 - Conducted Voltage Emissions Measurement Configuration (AL-1191)**



**Figure 6.4 - Conducted Voltage Emissions Measurement Configuration (AL-1191)**



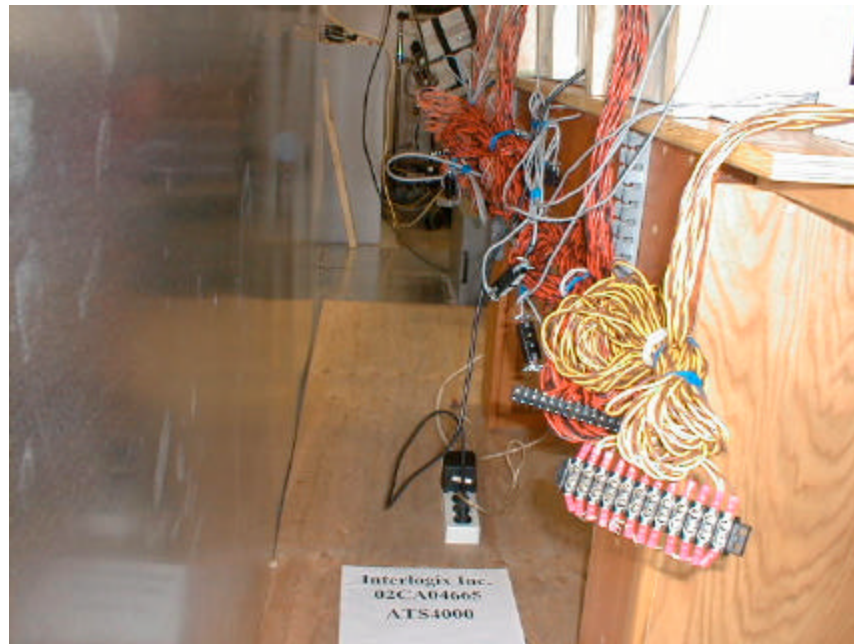
**Figure 6.5 - Conducted Voltage Emissions Measurement Configuration (AL-1191)**



**Figure 6.6 - Conducted Voltage Emissions Measurement Configuration (AL-1191)**

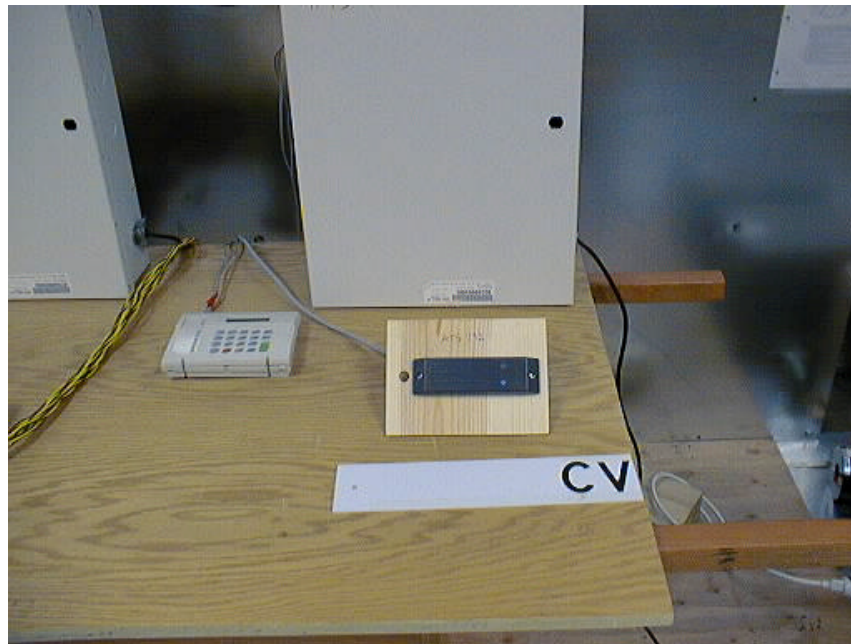


**Figure 6.7 - Conducted Voltage Emissions Measurement Configuration (AL-1191)**

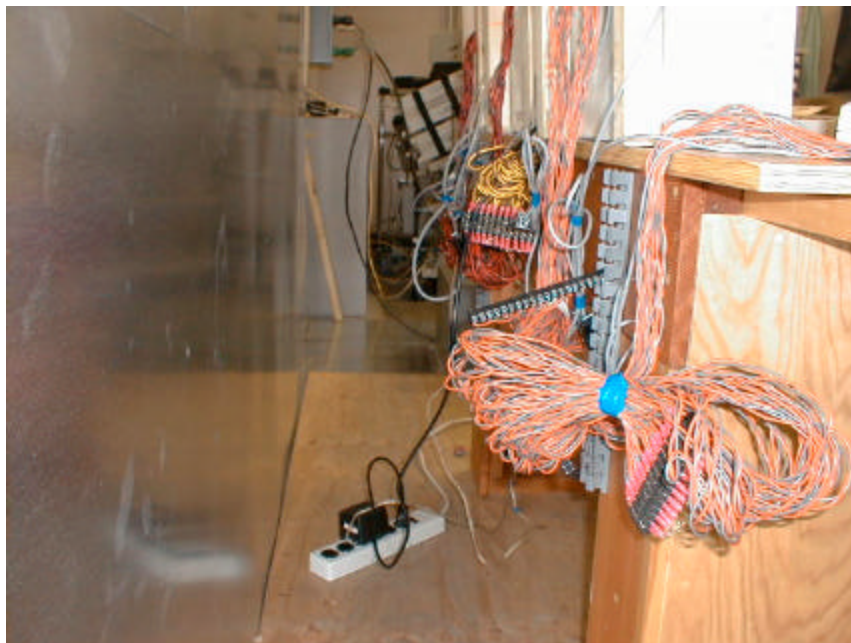




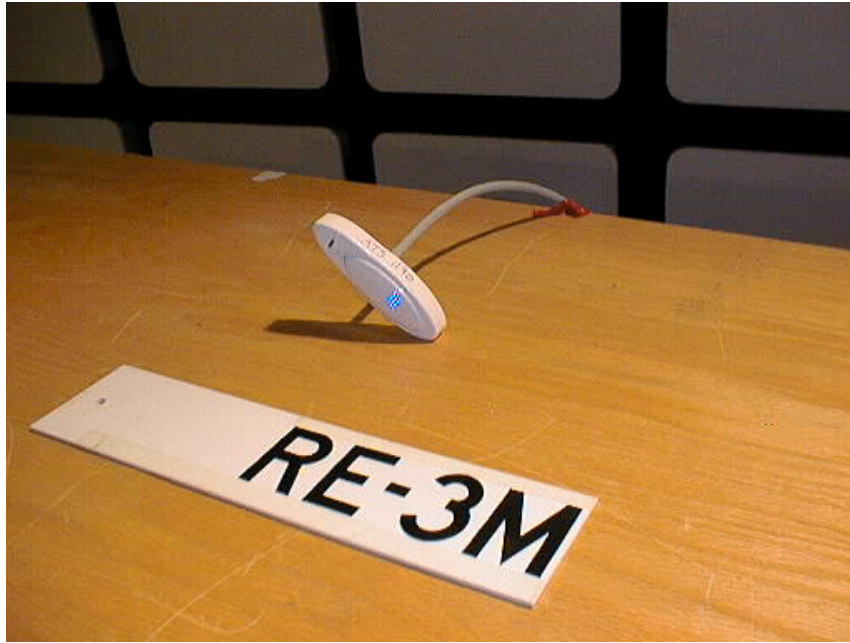
**Figure 6.8 - Conducted Voltage Emissions Measurement Configuration (AL-1193)**



**Figure 6.9 - Conducted Voltage Emissions Measurement Configuration (AL-1193)**



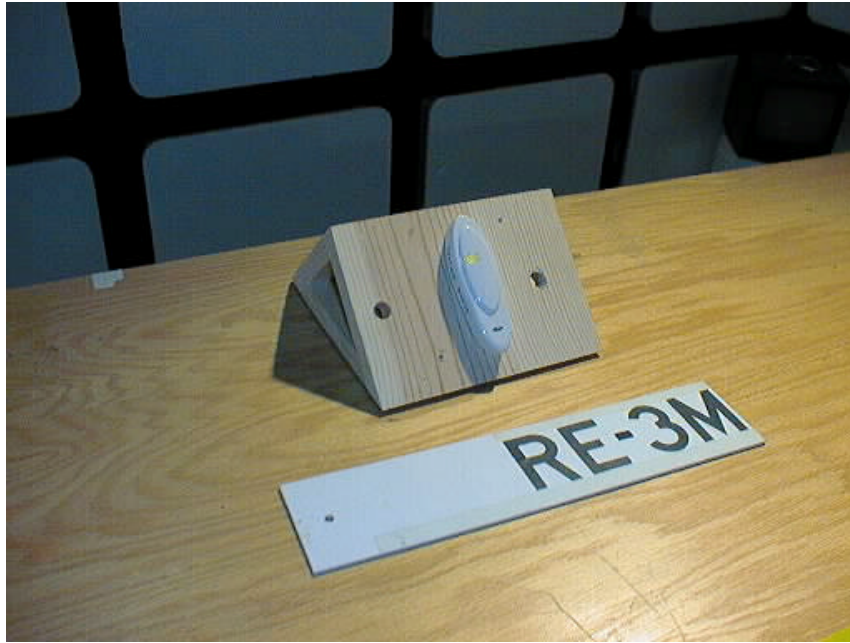
**Figure 6.12 - Radiated Emissions, Pre-scan, 3m Chamber (NX1700E, AL-1191 and AL-1193)**



**Figure 6.13 - Radiated Emissions, Pre-scan, 3m Chamber (NX1700E, AL-1191 and AL-1193)**



**Figure 6.14 - Radiated Emissions, Pre-scan, 3m Chamber (NX1700E, AL-1191 and AL-1193)**



**Figure 6.15 - Radiated Emissions, Pre-scan, 3m Chamber (NX1700E, AL-1191 and AL-1193)**





**Figure 6.16 - Radiated Emissions, Pre-scan, 3m Chamber (NX1700E, AL-1191 and AL-1193)**





**Figure 6.17 - Radiated Emissions, Open Area Test Site (AL-1191 and 1193)**



**Figure 6.18 - Radiated Emissions, Open Area Test Site (AL-1191 and 1193)**

