
**Inductive RFID Proximity Card Reader
operating on 134.2 kHz
Brand Nedap
Models VP1850 series
Label Location and artwork**

Description of EUT: Inductive RFID Proximity Card Reader 134.2 kHz
Manufacturer: N.V. Nederlandsche Apparatenfabriek "Nedap"
Brand mark: Nedap
Models: VP1850 series
FCC ID: CGDVP1850
IC: 1444A-VP1850

Description of item

Description of EUT : Inductive RFID Proximity Card Reader operating on 134.2 kHz
Manufacturer : N.V. Nederlandsche Apparatenfabriek "Nedap"
Brand : Nedap
Model : VP1850 VELOS and VP1850 DONALDS
FCC ID : CGDVP1850
IC : 1444A-VP1850

Applicant information

Applicant's representative : Mr. Jacques Hulshof
Company : N.V. Nederlandsche Apparatenfabriek "Nedap"
Address : Parallelweg 2
Postal code : 7141 DC
City : Groenlo
PO-box : 6
Postal code : 7140 AA
City : Groenlo
Country : The Netherlands
Telephone number : +31 (0) 544 471111
Telefax number : +31 (0) 544 463475

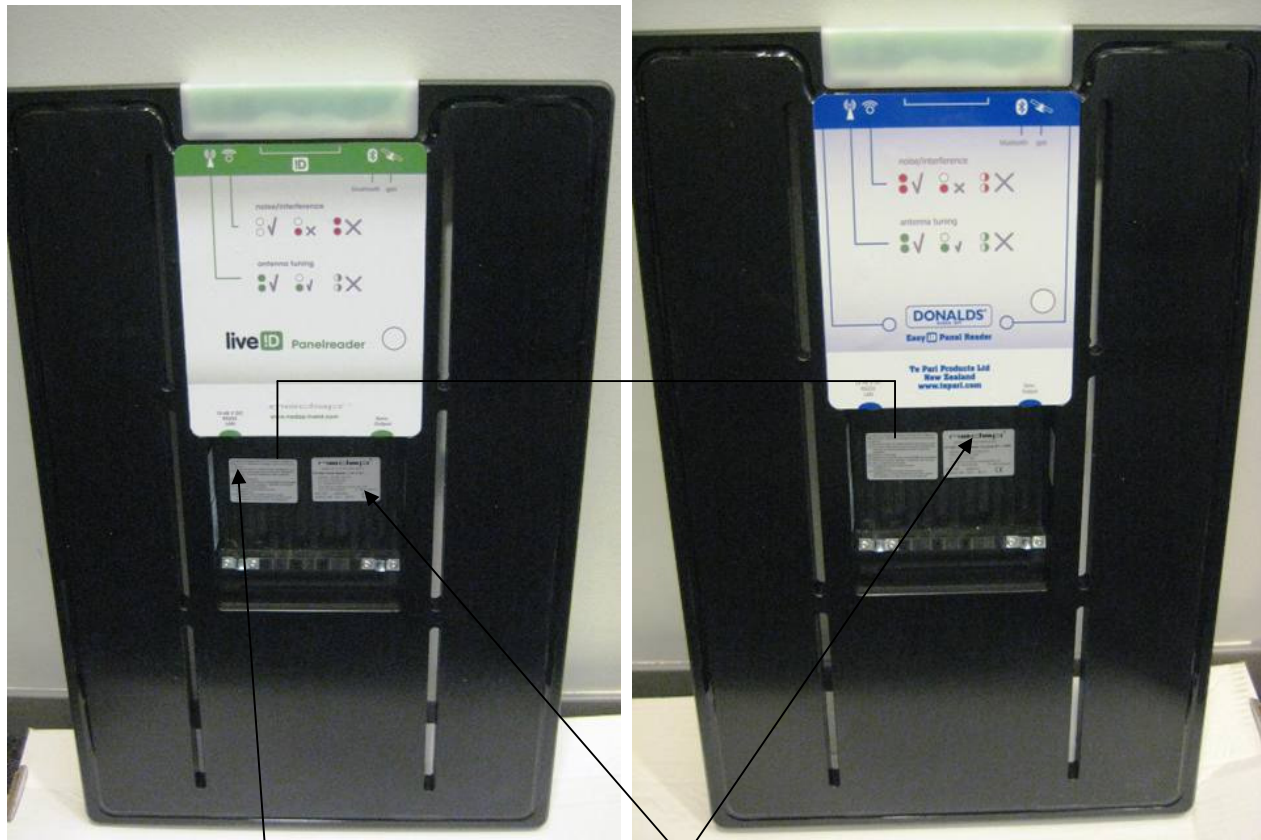
20 December 2011

Description of EUT: Inductive RFID Proximity Card Reader 134.2 kHz
Manufacturer: N.V. Nederlandsche Apparatenfabriek "Nedap"
Brand mark: Nedap
Models: VP1850 series
FCC ID: CGDVP1850
IC: 1444A-VP1850

Table of contents

| | | |
|----------|--|----------|
| 1 | LABEL LOCATION VP1850 | 4 |
| 2 | PHOTOGRAPHS OF THE LABELING | 4 |
| 2.1 | COMPLIANCE - OR WARNING STATEMENT ON THE VP1850 SERIES | 4 |
| 2.2 | VP1850 VELOS BLUE TOOTH AND GPS | 5 |
| 2.3 | VP1850 VELOS BLUE TOOTH | 5 |
| 2.4 | VP1850 DONALDS BLUE TOOTH AND GPS | 5 |
| 2.5 | VP1850 DONALDS BLUE TOOTH | 6 |
| 3 | ARTWORK | 6 |
| 3.1 | ARTWORK OF THE COMPLIANCE STATEMENT ON THE VP1850 SERIES | 6 |
| 3.2 | ARTWORK OF THE VP1850 VELOS BLUE TOOTH AND GPS | 6 |
| 3.3 | ARTWORK OF THE VP1850 VELOS BLUE TOOTH | 7 |
| 3.4 | ARTWORK OF THE VP1850 DONALDS BLUE TOOTH AND GPS | 7 |
| 3.5 | ARTWORK OF THE VP1850 DONALDS BLUE TOOTH | 7 |

1 Label location VP1850

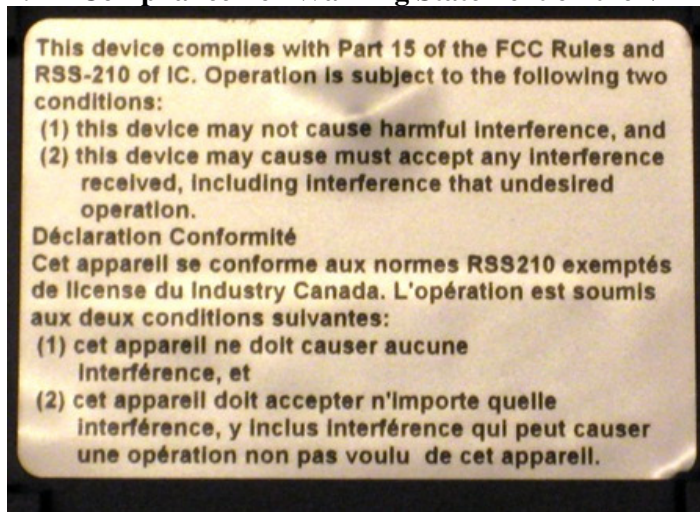


Compliance statement

Model, IC and FCC ID

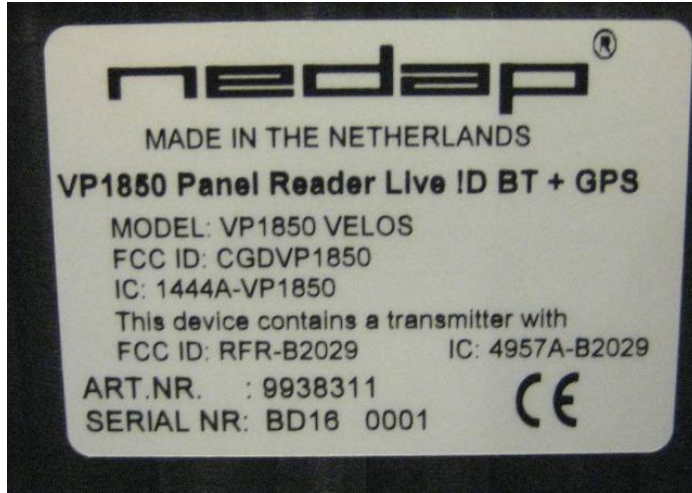
2 Photographs of the labeling

2.1 Compliance - or Warning Statement on the VP1850 series

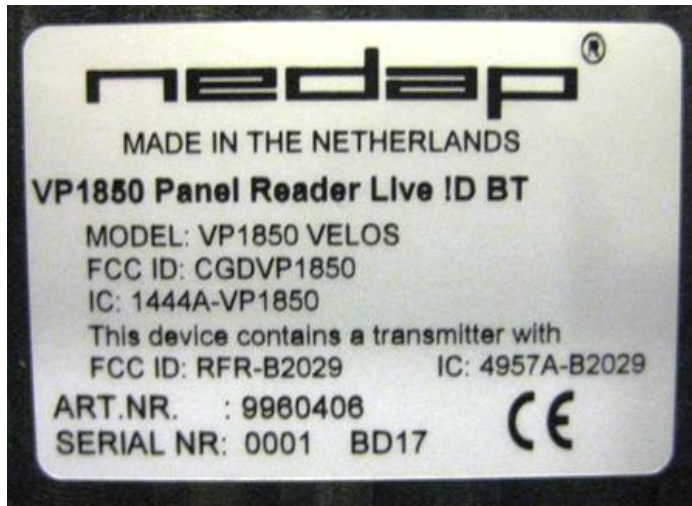


Description of EUT: Inductive RFID Proximity Card Reader 134.2 kHz
Manufacturer: N.V. Nederlandsche Apparatenfabriek "Nedap"
Brand mark: Nedap
Models: VP1850 series
FCC ID: CGDVP1850
IC: 1444A-VP1850

2.2 VP1850 VELOS Blue Tooth and GPS



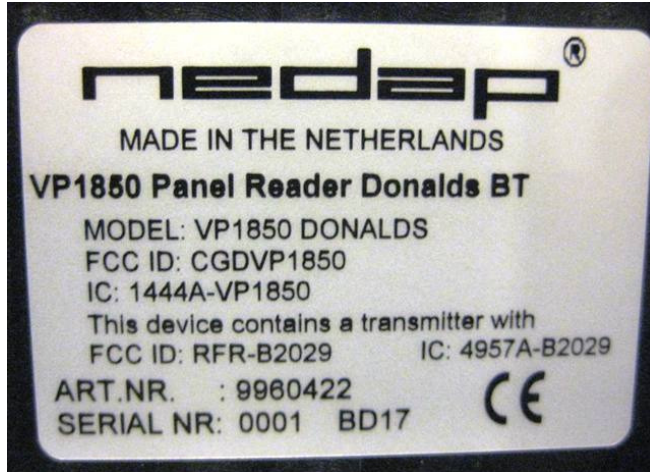
2.3 VP1850 VELOS Blue Tooth



2.4 VP1850 DONALDS Blue Tooth and GPS



2.5 VP1850 DONALDS Blue Tooth



3 Artwork

3.1 Artwork of the compliance statement on the VP1850 series

This device complies with Part 15 of the FCC Rules and RSS-210 of IC. Operation is subject to the following two conditions:

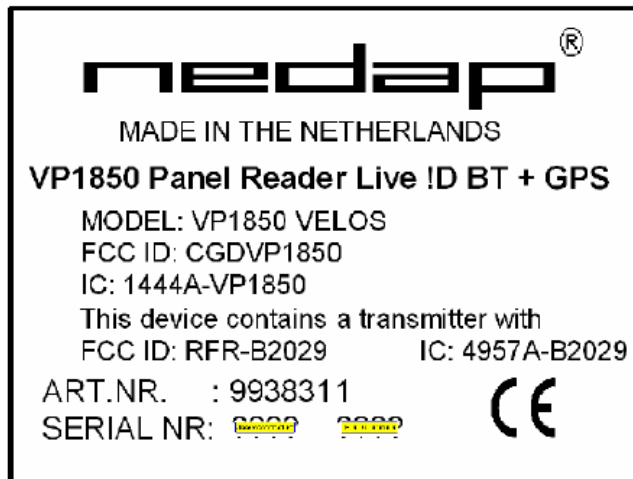
- (1) this device may not cause harmful interference, and
- (2) this device may cause must accept any interference received, including interference that undesired operation.

Déclaration Conformité

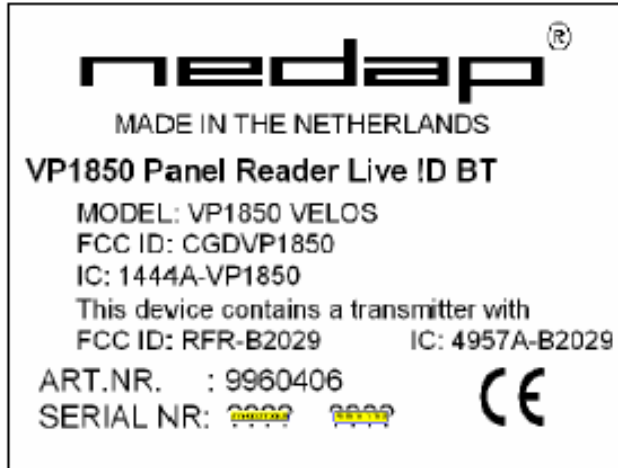
Cet appareil se conforme aux normes RSS-210 exemptés de licence du Industry Canada. L'opération est soumis aux deux conditions suivantes:

- (1) cet appareil ne doit causer aucune interférence, et
- (2) cet appareil doit accepter n'importe quelle interférence, y inclus interférence qui peut causer une opération non pas voulu de cet appareil.

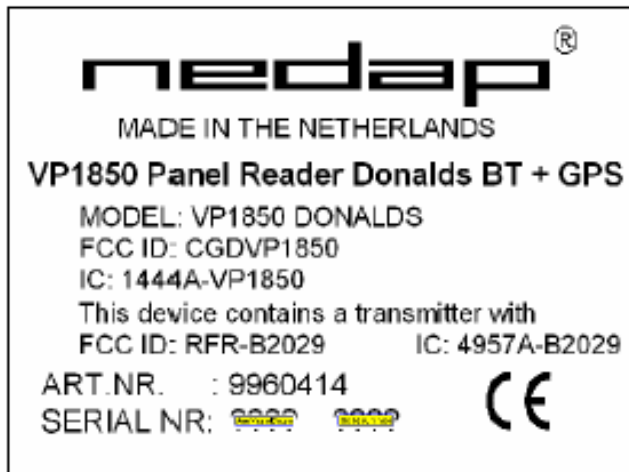
3.2 Artwork of the VP1850 VELOS Blue Tooth and GPS



3.3 Artwork of the VP1850 VELOS Blue Tooth



3.4 Artwork of the VP1850 DONALDS Blue Tooth and GPS



3.5 Artwork of the VP1850 DONALDS Blue Tooth

