
**Inductive RFID Proximity Card Reader
operating on 134.2 kHz
Brand Nedap
Model VP1103
Interior Photographs**

Description of EUT: Inductive Proximity Card Reader 134.2 kHz
Manufacturer: N.V. Nederlandsche Apparatenfabriek "Nedap"
Brand mark: Nedap
Model: VP1103
FCC ID CGDVP1103
IC 1444A-VP1103

Description of item

Description of EUT : Inductive RFID Proximity Card Reader operating on 134.2 kHz
Manufacturer : N.V. Nederlandsche Apparatenfabriek "Nedap"
Brand : Nedap
Models : VP1103
FCC ID CGDVP1103
IC 1444A-VP1103

Applicant information

Applicant's representative : Mr. Jacques Hulshof
Company : N.V. Nederlandsche Apparatenfabriek "Nedap"
Address : Parallelweg 2
Postal code : 7141 DC
City : Groenlo
PO-box : 6
Postal code : 7140 AA
City : Groenlo
Country : The Netherlands
Telephone number : +31 (0) 544 471111
Telefax number : +31 (0) 544 463475

19 December 2011

Table of contents

1	FRONT SIDE OF THE VP1004 ENCLOSURE.....	4
2	INTERNAL COMPONENTS	4
2.1	PHOTO TAKEN FROM THE FRONT SIDE NOT POTTED ELECTRONICS	4
2.2	DETAILED PHOTO OF THE ELECTRONICS	5
3	THE TRANSMITTER RECEIVER MODULE	5
3.1	FRONT SIDE TOP	5
3.2	FRONT SIDE SIDEWAYS	6
3.3	BACK SIDE.....	6

1 Front side of the VP1004 enclosure

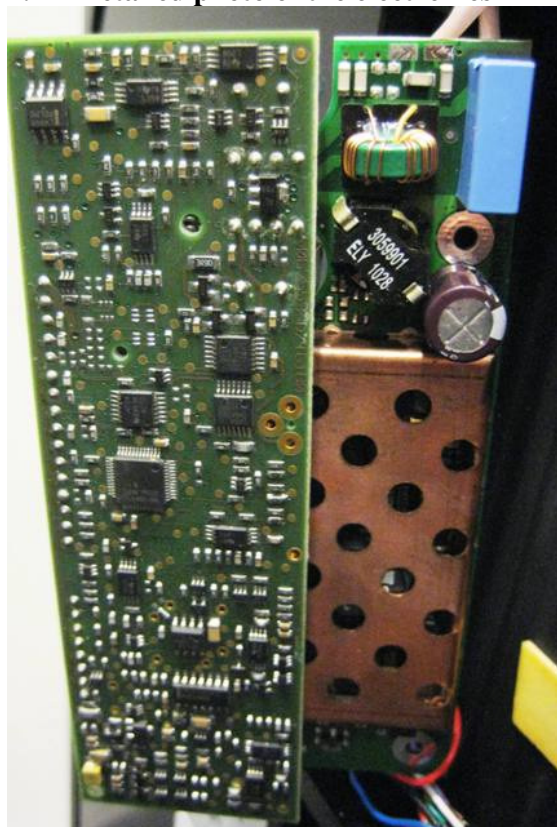


2 Internal components

2.1 Photo taken from the front side not potted electronics

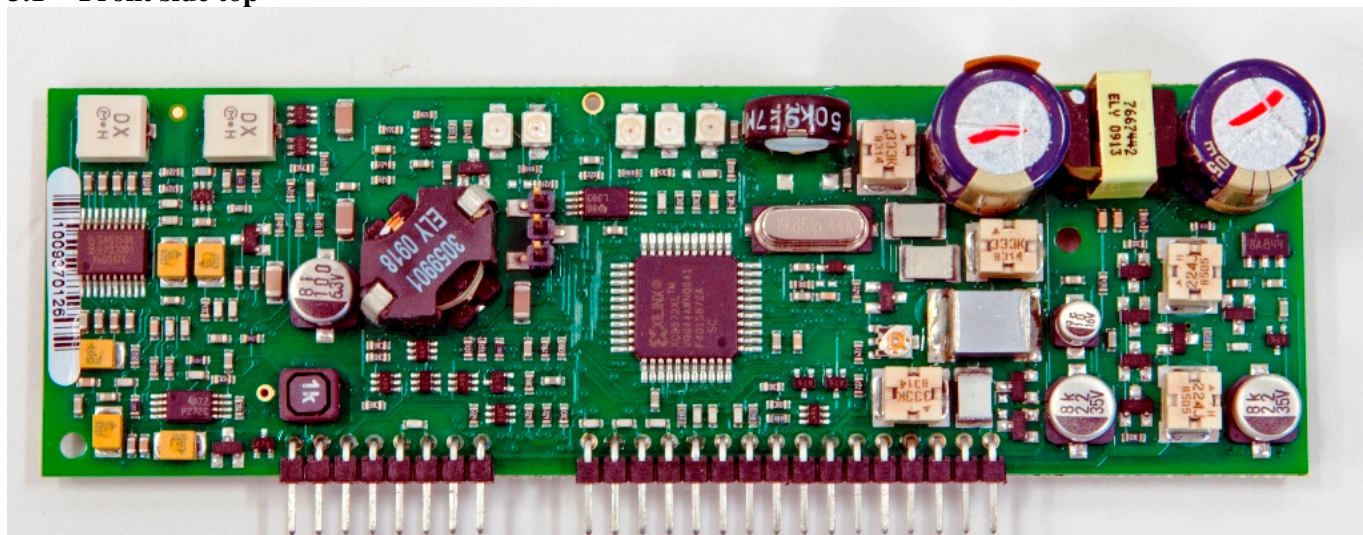


2.2 Detailed photo of the electronics



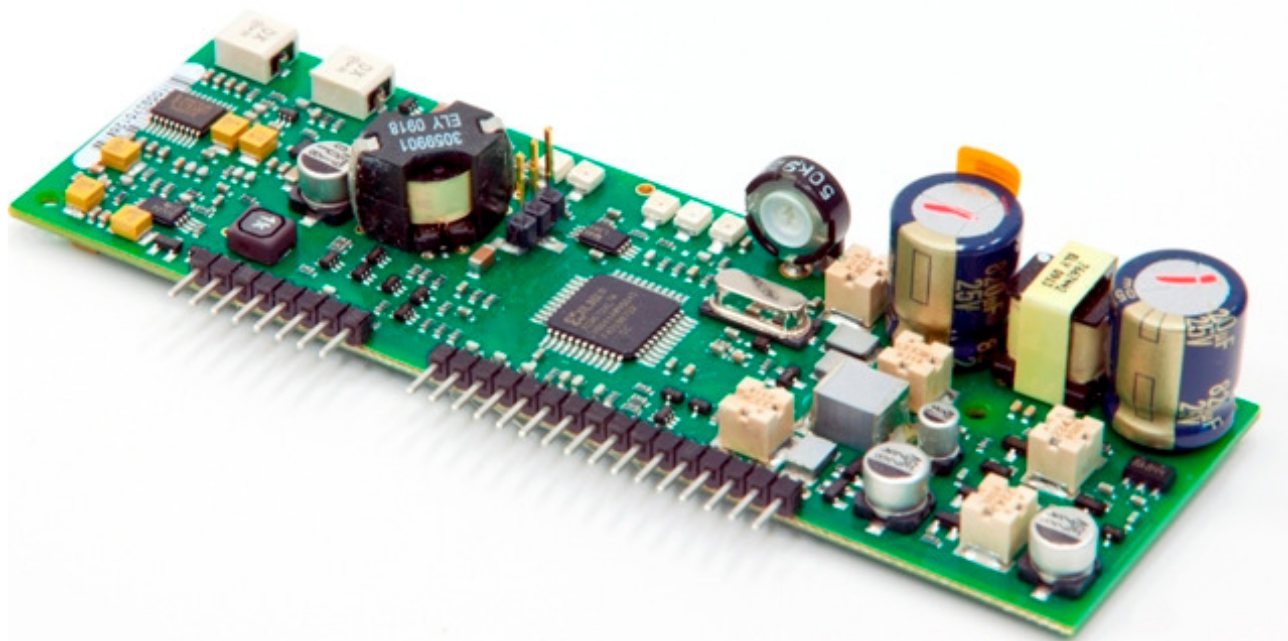
3 The transmitter receiver module

3.1 Front side top



Description of EUT: Inductive Proximity Card Reader 134.2 kHz
Manufacturer: N.V. Nederlandsche Apparatenfabriek "Nedap"
Brand mark: Nedap
Model: VP1103
FCC ID: CGDVP1103
IC: 1444A-VP1103

3.2 Front side sideways



3.3 Back side

