

**UHF EPC Gen2 RFID reader operating on 902-928 MHz
Brand Nedap
Model
uPass Access Region 2&3 Label Location
and
Label photographs**

Description of EUT: UHF EPC Gen2 RFID reader operating
on 902-928 MHz
Manufacturer: N.V. Nederlandsche Apparatenfabriek "Nedap"
Brand mark: Nedap
Model: uPass Access Region 2&3
FCC ID: CGDUPASSACC
IC: 1444A-UPASSACC
Type of Service: New Application

Description of item

Description of EUT : UHF EPC Gen2 RFID reader operating on 902-928 MHz
Manufacturer : N.V. Nederlandsche Apparatenfabriek "Nedap"
Brand : Nedap
Model : uPass Access Region 2&3
FCC ID : CGDUPASSACC
IC : 1444A-UPASSACC
Type of Service : New Application

Applicant information

Applicant's representative : Mr. Jacques Hulshof
Company : N.V. Nederlandsche Apparatenfabriek "Nedap"
Address : Parallelweg 2
Postal code : 7141 DC
City : Groenlo
PO-box : 6
Postal code : 7140 AA
City : Groenlo
Country : The Netherlands
Telephone number : +31 (0) 544 471111
Telefax number : +31 (0) 544 463475

28 March 2013

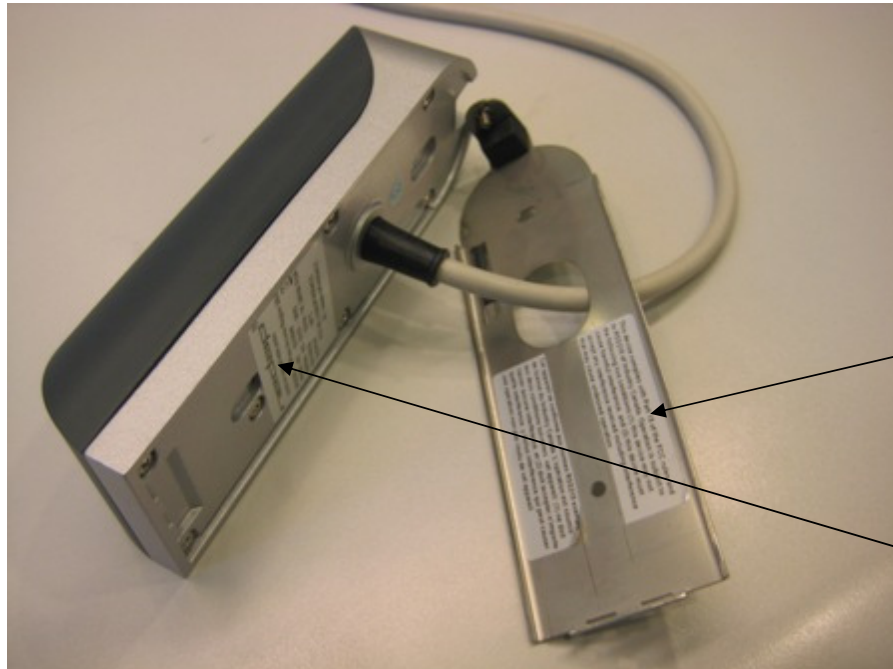
Description of EUT: UHF EPC Gen2 RFID reader operating
on 902-928 MHz
Manufacturer: N.V. Nederlandsche Apparatenfabriek "Nedap"
Brand mark: Nedap
Model: uPass Access Region 2&3
FCC ID: CGDUPASSACC
IC: 1444A-UPASSACC
Type of Service: New Application

Table of contents

1	Location of the label.....	4
2	IC-FCC ID label.....	4
3	Warning label.....	5

Description of EUT: UHF EPC Gen2 RFID reader operating on 902-928 MHz
Manufacturer: N.V. Nederlandsche Apparatenfabriek "Nedap"
Brand mark: Nedap
Model: uPass Access Region 2&3
FCC ID: CGDUPASSACC
IC: 1444A-UPASSACC
Type of Service: New Application

1 Location of the label



Warning label

Model number Ic, FCC-ID

2 IC-FCC ID label



Description of EUT: UHF EPC Gen2 RFID reader operating on 902-928 MHz
Manufacturer: N.V. Nederlandsche Apparatenfabriek "Nedap"
Brand mark: Nedap
Model: uPass Access Region 2&3
FCC ID: CGDUPASSACC
IC: 1444A-UPASSACC
Type of Service: New Application

3 Warning label

