
**Long-range vehicle and driver identification reader
operating on 2.45 GHz, 433 MHz and 120 kHz
Brand Nedap
Model: TRANSIT ULTIMATE
Interior Photographs**

Description of EUT: Long-range vehicle and driver identification reader operating on 2.45 GHz, 433 MHz and 120 kHz
Manufacturer: N.V. Nederlandse Apparatenfabriek "Nedap"
Brand mark: Nedap
Model: TRANSIT ULTIMATE
FCC ID: CGDTRANSITULTI
IC: 1444A-TRANSITULTI
Type of Application: New Application

Description of item

Description of EUT : Long-range vehicle and driver identification reader operating on 2.45 GHz, 433 MHz and 120 kHz
Manufacturer : N.V. Nederlandsche Apparatenfabriek "Nedap"
Brand : Nedap
Model : TRANSIT ULTIMATE
FCC ID : CGDTRANSITULTI
IC : 1444A-TRANSITULTI
Type of Service : New Application

Applicant information

Applicant's representative : Mr. Jacques Hulshof
Company : N.V. Nederlandsche Apparatenfabriek "Nedap"
Address : Parallelweg 2
Postal code : 7141 DC
City : Groenlo
PO-box : 6
Postal code : 7140 AA
City : Groenlo
Country : The Netherlands
Telephone number : +31 (0) 544 471111
Telefax number : +31 (0) 544 463475

25 Augustus 2015

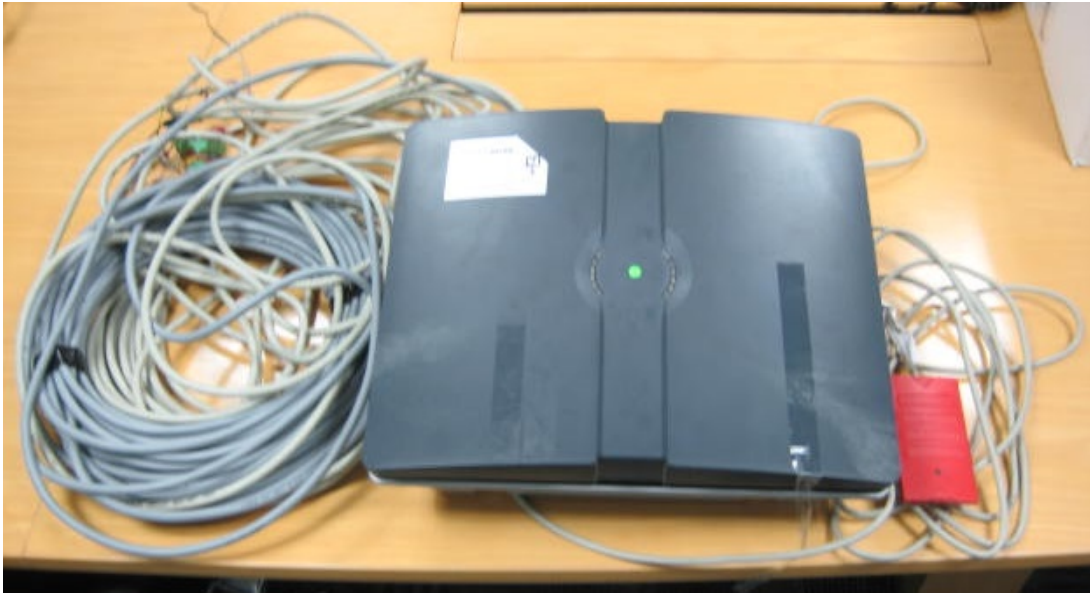
Description of EUT:	Long-range vehicle and driver identification reader operating on 2.45 GHz, 433 MHz and 120 kHz
Manufacturer:	N.V. Nederlandse Apparatenfabriek "Nedap"
Brand mark:	Nedap
Model:	TRANSIT ULTIMATE
FCC ID	CGDTRANSITULTI
IC	1444A- TRANSITULTI
Type of Application	New Application

Table of contents

1	TOTAL OVERVIEW	4
2	CASE OPENED	4
2.1	TOTAL OVERVIEW	4
2.2	PHOTOGRAPH OF 2.45 GHZ TRANSMITTER	5
2.3	PHOTOGRAPH POWER SUPPLY, 433 MHZ BOARD, 120 KHZ BOARD AND RS 485	5
3	OVERVIEW SPS270 BOARD.....	6
3.1	TOTAL OVERVIEW	6
3.2	POWER SUPPLY AND STEERING BOARD FRONT SIDE.....	6
3.3	POWER SUPPLY AND STEERING BOARD BACK SIDE	7
3.4	433 MHZ BOARD.....	7
3.5	433 MHZ BOARD WITHOUT METAL COVER FRONT SIDE	8
3.6	433 MHZ BOARD BACK SIDE	8
3.7	RS 485 BOARD FRONT SIDE.....	9
3.8	RS 485 BOARD BACK SIDE	9
4	LED AND 2.45 GHZ PART.....	10
4.1	LED PRINTED CIRCUIT BOARD AND 2.45 GHZ HOUSING.....	10
4.2	2.45 GHZ HOUSING	10
4.3	2.45 GHZ PRINTED CIRCUIT BOARD WITHOUT METAL COVER FRONT SIDE	11
4.4	COMPONENT SIDE OF THE 2.45 GHZ PRINTED CIRCUIT BOARD INCL. METAL HOUSING	11
4.5	2.45 GHZ PRINTED CIRCUIT BOARD	12
4.6	2.45 GHZ PRINTED CIRCUIT BOARD WITHOUT FOAM	12
4.7	LED PRINTED CIRCUIT BOARD, BACK SIDE.....	13
4.8	LED PRINTED CIRCUIT BOARD, FRONT SIDE	13
5	DC130 ANTENNA FOR 120 KHZ, FRONT	14
5.1	DC130 ANTENNA FOR 120 KHZ, BACK	14

Description of EUT: Long-range vehicle and driver identification reader operating on 2.45 GHz, 433 MHz and 120 kHz
Manufacturer: N.V. Nederlandse Apparatenfabriek "Nedap"
Brand mark: Nedap
Model: TRANSIT ULTIMATE
FCC ID: CGDTRANSITULTI
IC: 1444A- TRANSITULTI
Type of Application: New Application

1 Total overview



2 Case opened

2.1 Total overview

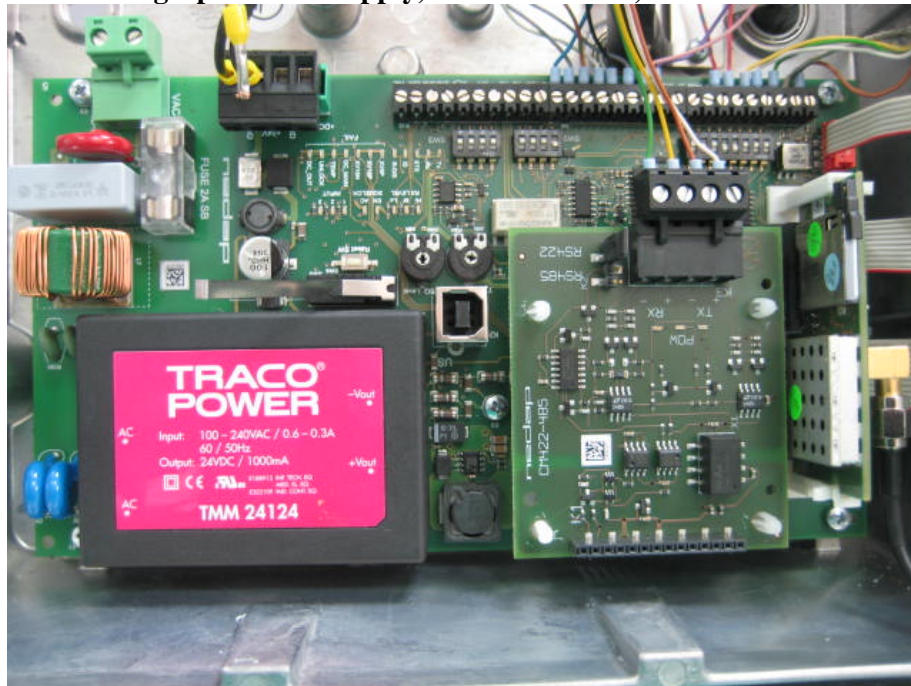


Description of EUT: Long-range vehicle and driver identification reader operating on 2.45 GHz, 433 MHz and 120 kHz
Manufacturer: N.V. Nederlandse Apparatenfabriek "Nedap"
Brand mark: Nedap
Model: TRANSIT ULTIMATE
FCC ID: CGDTRANSITULTI
IC: 1444A- TRANSITULTI
Type of Application: New Application

2.2 Photograph of 2.45 GHz transmitter



2.3 Photograph Power Supply, 433 MHz board, 120 kHz board and RS 485



Description of EUT:	Long-range vehicle and driver identification reader operating on 2.45 GHz, 433 MHz and 120 kHz
Manufacturer:	N.V. Nederlandse Apparatenfabriek "Nedap"
Brand mark:	Nedap
Model:	TRANSIT ULTIMATE
FCC ID	CGDTRANSITULTI
IC	1444A- TRANSITULTI
Type of Application	New Application

3 Overview SPS270 board

3.1 Total overview

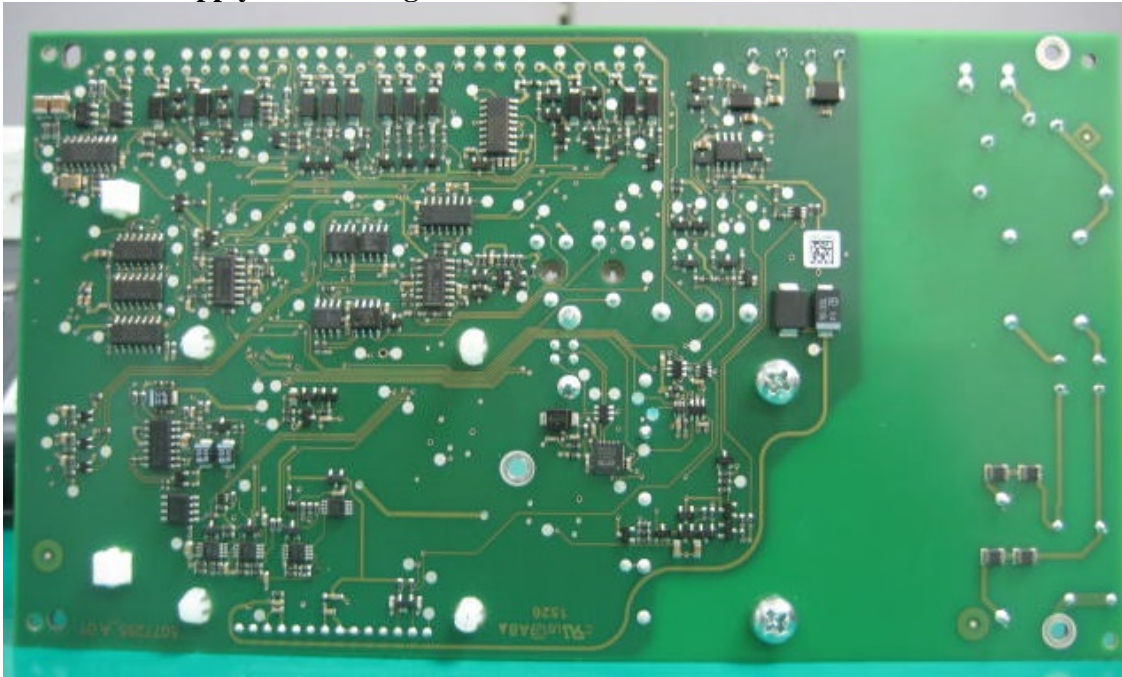


3.2 Power Supply and steering board front side

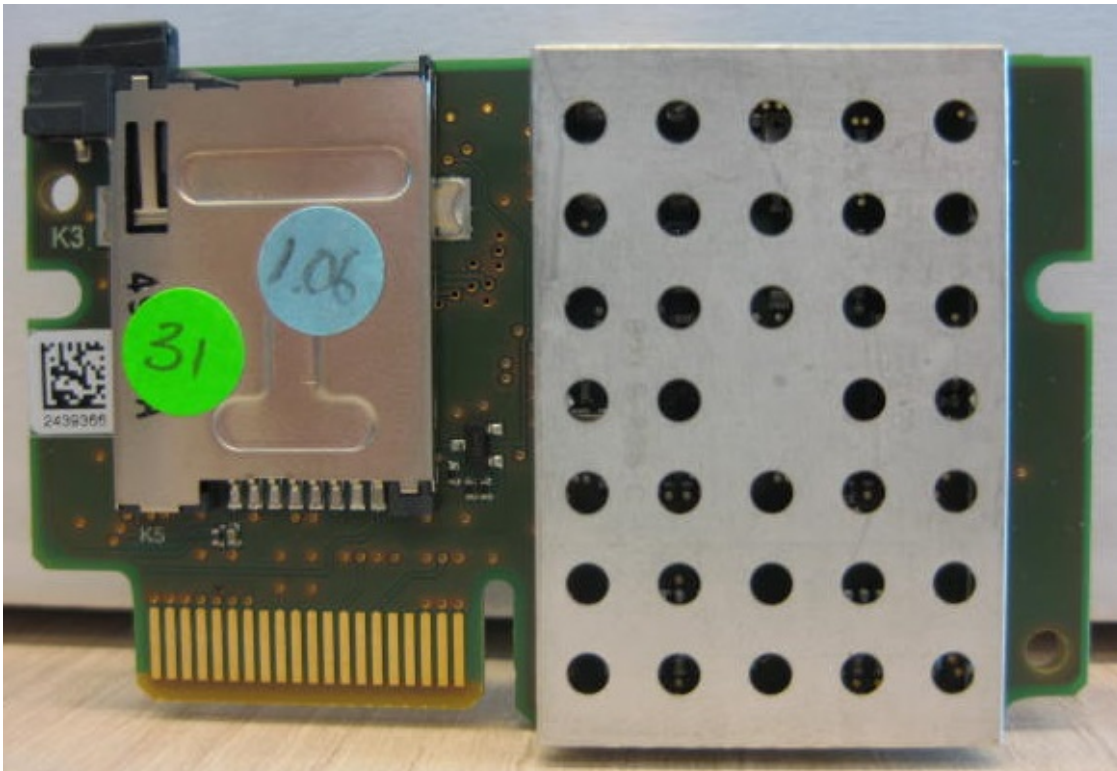


Description of EUT: Long-range vehicle and driver identification reader operating on 2.45 GHz, 433 MHz and 120 kHz
Manufacturer: N.V. Nederlandse Apparatenfabriek "Nedap"
Brand mark: Nedap
Model: TRANSIT ULTIMATE
FCC ID: CGDTRANSITULTI
IC: 1444A- TRANSITULTI
Type of Application: New Application

3.3 Power Supply and steering board back side



3.4 433 MHz board

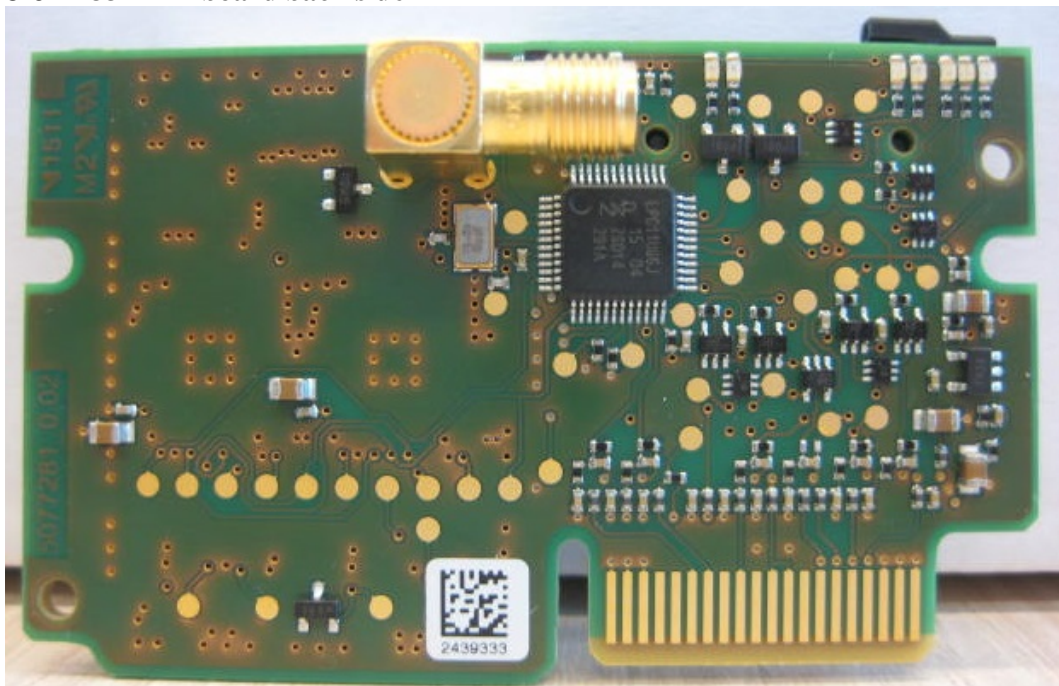


Description of EUT: Long-range vehicle and driver identification reader operating on 2.45 GHz, 433 MHz and 120 kHz
Manufacturer: N.V. Nederlandse Apparatenfabriek "Nedap"
Brand mark: Nedap
Model: TRANSIT ULTIMATE
FCC ID: CGDTRANSITULTI
IC: 1444A- TRANSITULTI
Type of Application: New Application

3.5 433 MHz board without metal cover front side

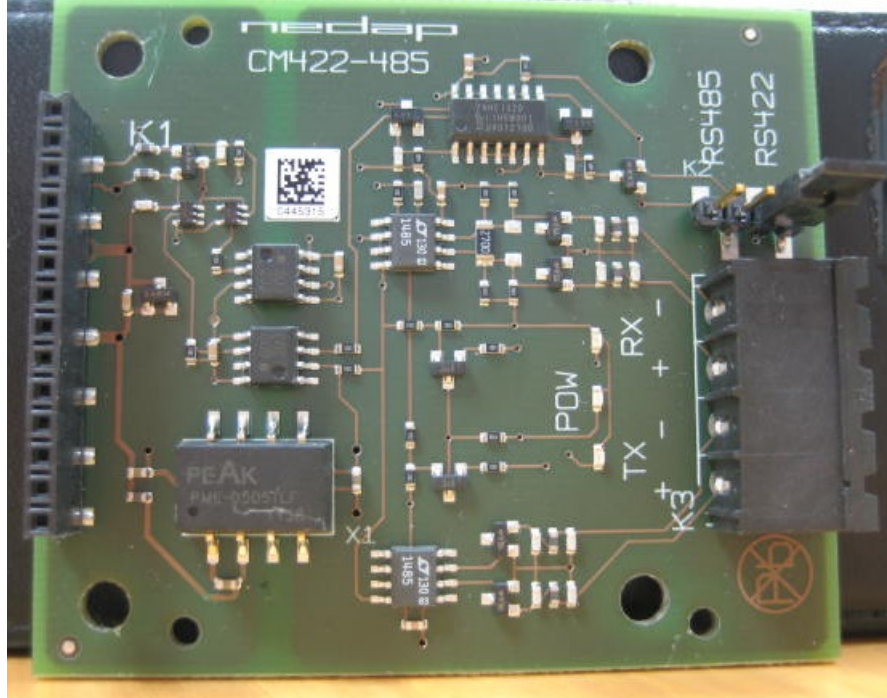


3.6 433 MHz board back side

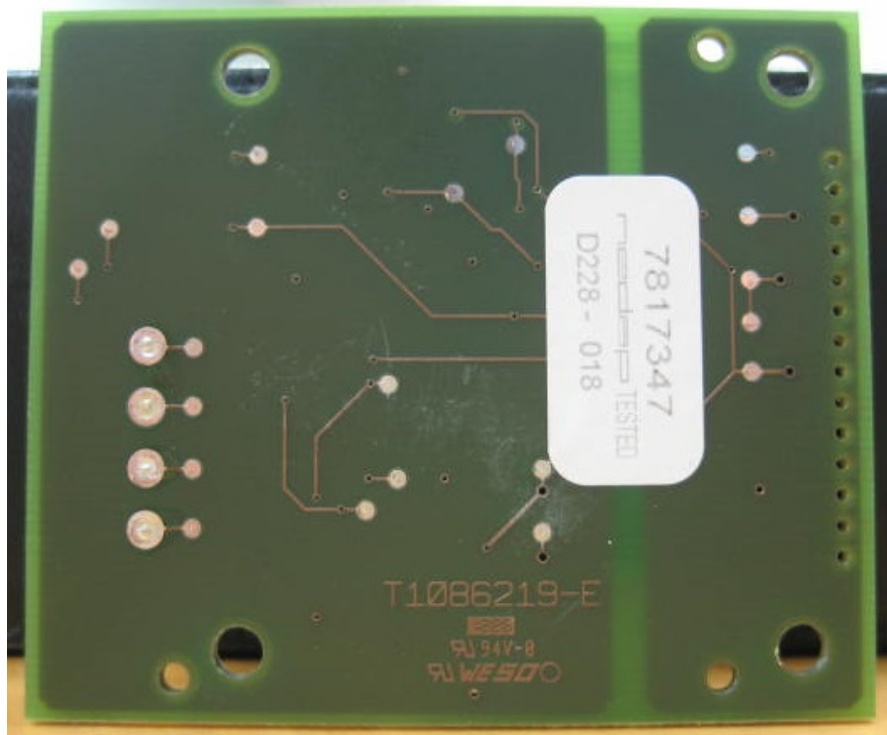


Description of EUT:	Long-range vehicle and driver identification reader operating on 2.45 GHz, 433 MHz and 120 kHz
Manufacturer:	N.V. Nederlandse Apparatenfabriek "Nedap"
Brand mark:	Nedap
Model:	TRANSIT ULTIMATE
FCC ID	CGDTRANSITULTI
IC	1444A- TRANSITULTI
Type of Application	New Application

3.7 RS 485 board front side



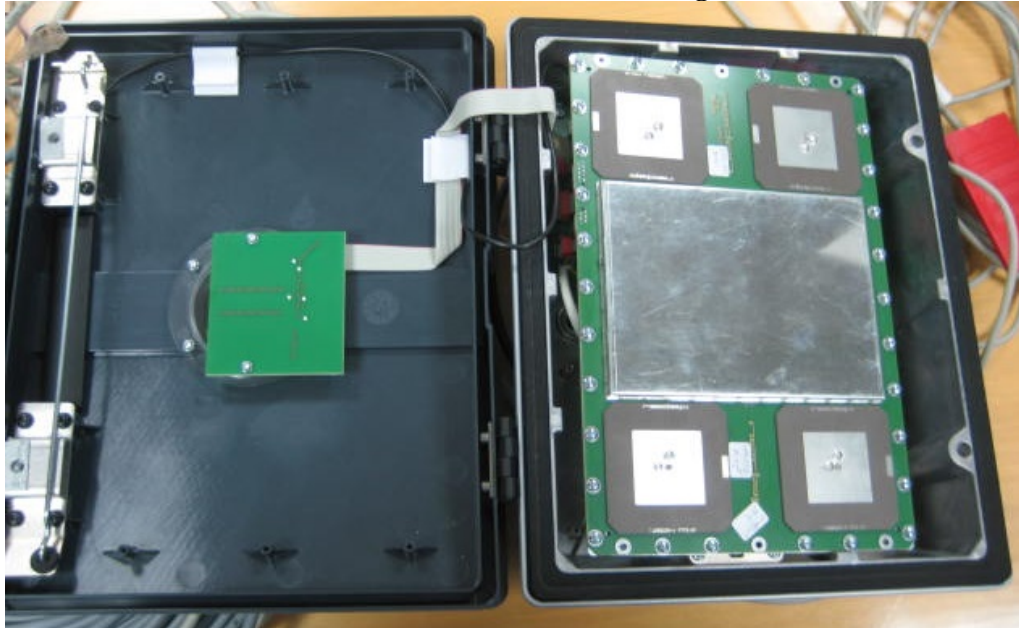
3.8 RS 485 board back side



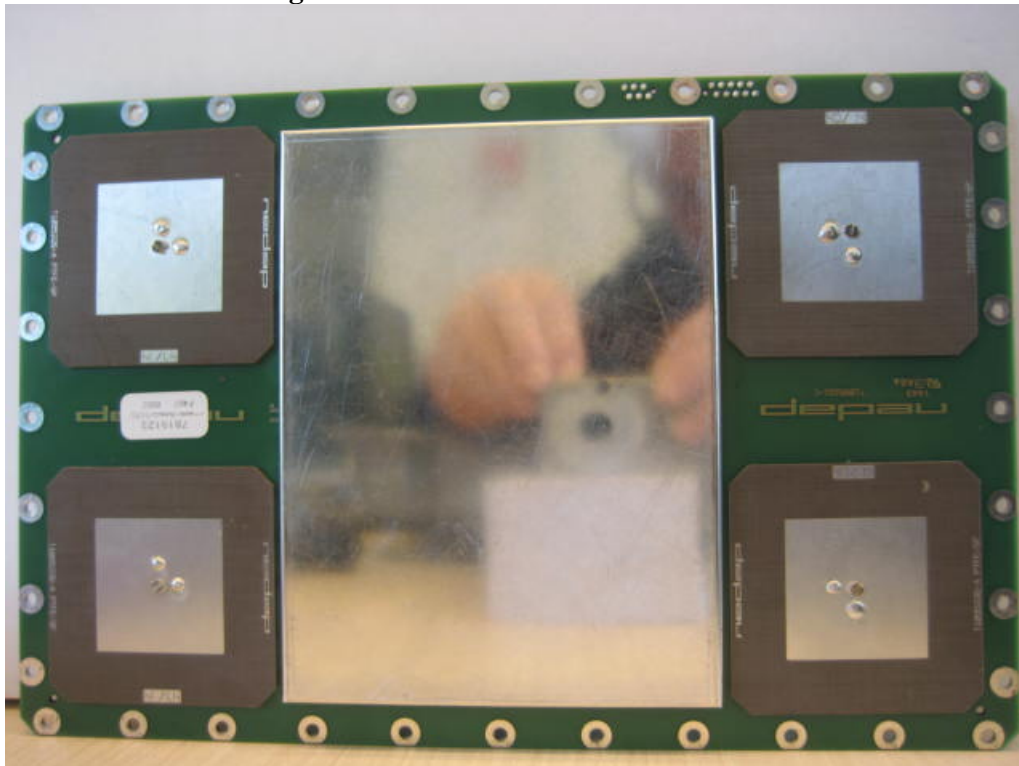
Description of EUT: Long-range vehicle and driver identification reader operating on 2.45 GHz, 433 MHz and 120 kHz
Manufacturer: N.V. Nederlandse Apparatenfabriek "Nedap"
Brand mark: Nedap
Model: TRANSIT ULTIMATE
FCC ID: CGDTRANSITULTI
IC: 1444A- TRANSITULTI
Type of Application: New Application

4 LED and 2.45 GHz part

4.1 LED Printed circuit board and 2.45 GHz housing

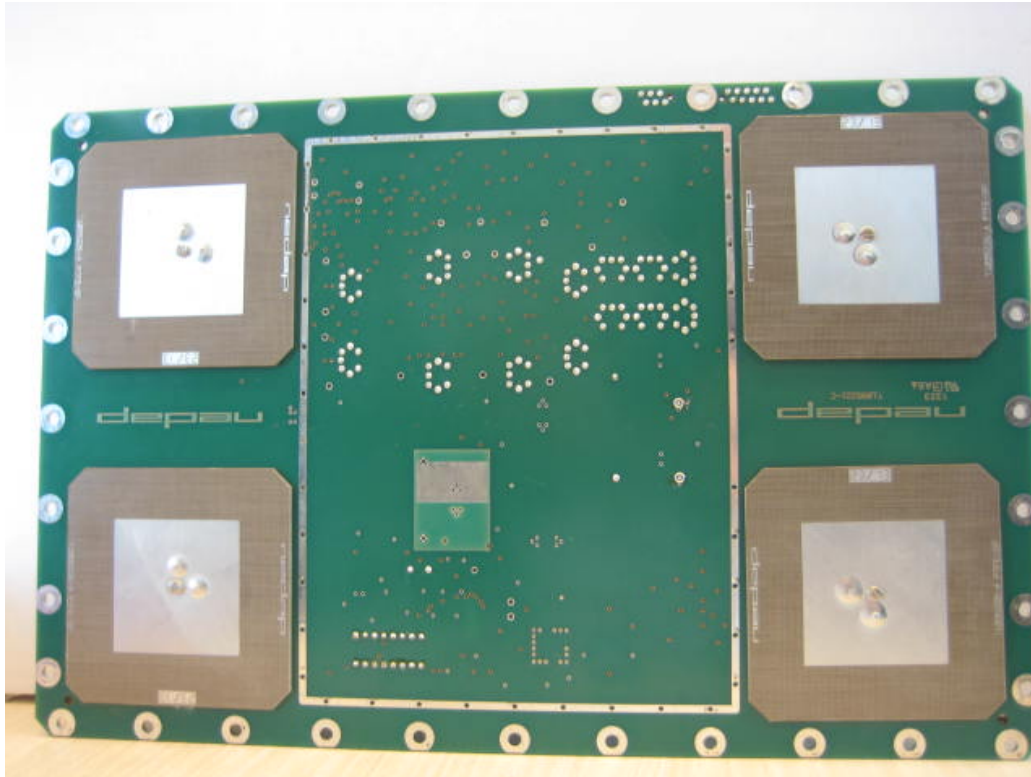


4.2 2.45 GHz housing



Description of EUT: Long-range vehicle and driver identification reader operating on 2.45 GHz, 433 MHz and 120 kHz
Manufacturer: N.V. Nederlandse Apparatenfabriek "Nedap"
Brand mark: Nedap
Model: TRANSIT ULTIMATE
FCC ID: CGDTRANSITULTI
IC: 1444A- TRANSITULTI
Type of Application: New Application

4.3 2.45 GHz Printed circuit board without metal cover front side

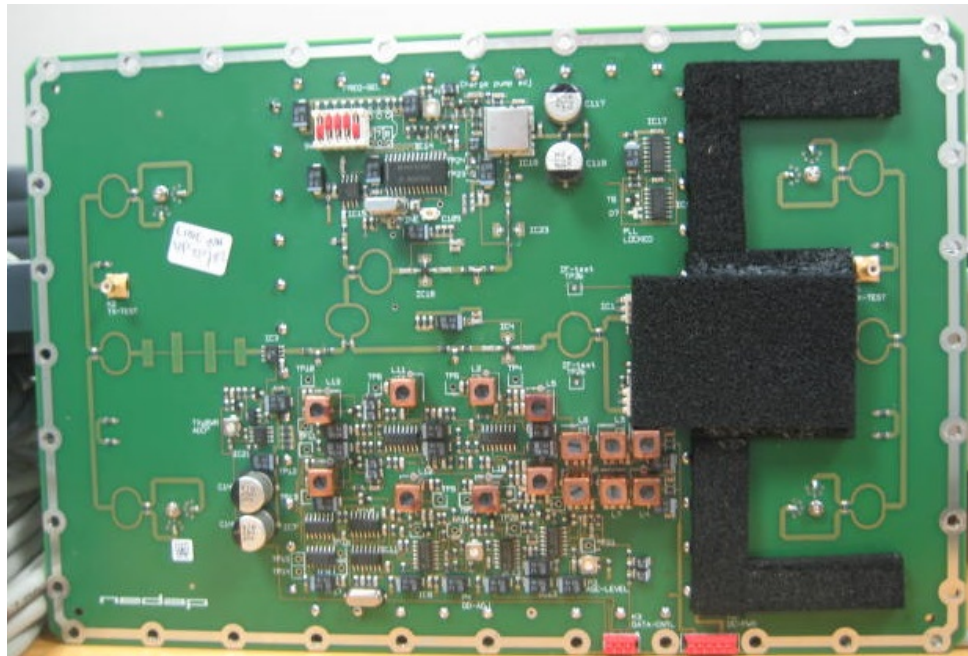


4.4 Component side of the 2.45 GHz Printed circuit board incl. metal housing

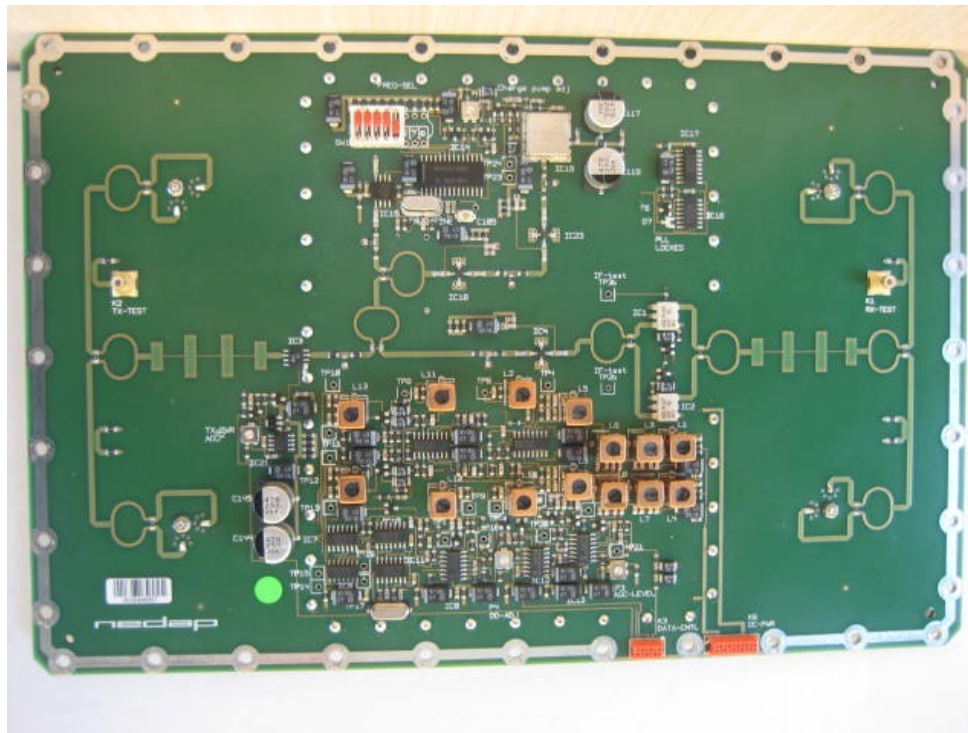


Description of EUT: Long-range vehicle and driver identification reader operating on 2.45 GHz, 433 MHz and 120 kHz
Manufacturer: N.V. Nederlandse Apparatenfabriek "Nedap"
Brand mark: Nedap
Model: TRANSIT ULTIMATE
FCC ID: CGDTRANSITULTI
IC: 1444A- TRANSITULTI
Type of Application: New Application

4.5 2.45 GHz Printed circuit board

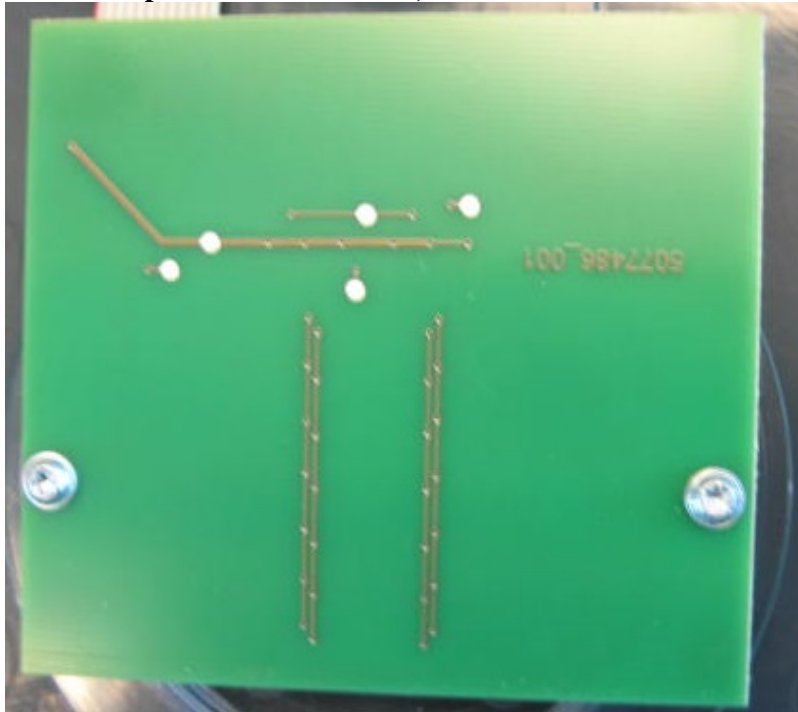


4.6 2.45 GHz Printed circuit board without foam

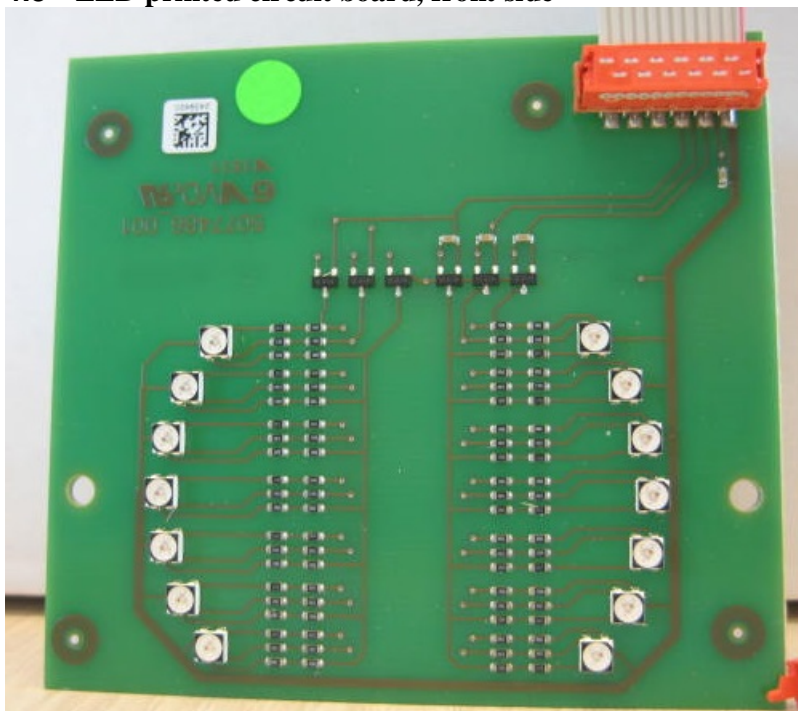


Description of EUT: Long-range vehicle and driver identification reader operating on 2.45 GHz, 433 MHz and 120 kHz
Manufacturer: N.V. Nederlandse Apparatenfabriek "Nedap"
Brand mark: Nedap
Model: TRANSIT ULTIMATE
FCC ID: CGDTRANSITULTI
IC: 1444A- TRANSITULTI
Type of Application: New Application

4.7 LED printed circuit board, back side



4.8 LED printed circuit board, front side



Description of EUT: Long-range vehicle and driver identification reader operating on 2.45 GHz, 433 MHz and 120 kHz
Manufacturer: N.V. Nederlandse Apparatenfabriek "Nedap"
Brand mark: Nedap
Model: TRANSIT ULTIMATE
FCC ID: CGDTRANSITULTI
IC: 1444A- TRANSITULTI
Type of Application: New Application

5 DC130 antenna for 120 kHz, front



5.1 DC130 antenna for 120 kHz, back

