

Photo report internal components

Model: TRANSIT ULTIMATE

Brand: Nedap

Long-range vehicle and driver identification reader
operating on 2.45 GHz, 433 MHz and 120 kHz

Date	2 July 2020
By	R. Waenink, K. Hammoud, Nedap N.V.

1. Contents

1.	Contents	2
2.	General information	3
2.1.	Description of EUT	3
2.2.	Applicant information	3
3.	Overview TRANSIT ULTIMATE	4
4.	Case opened	5
4.1.	Total overview	5
4.2.	Photograph of 2.45GHz transmitter	5
4.3.	Power supply, 433MHz board, 120kHz and RS485	6
5.	Overview SPS270 board	7
5.1.	Total Overview	7
5.2.	Power supply and control board front view	7
5.3.	Power supply and control board back view	8
5.4.	433 MHz board	8
5.5.	433 MHz board without metal cover front view	9
5.6.	433 MHz board back view	9
5.7.	RS485 board front view	10
5.8.	RS485 board back view	10
6.	2.45 GHz Part	11
6.1.	2.45 GHz transmitter in housing	11
6.2.	2.45 GHz transmitter board front view	11
6.3.	2.45 GHz transmitter board back view with metal housing	12
6.4.	2.45 GHz transmitter board back view	12
7.	120kHz antenna	13
7.1.	DC130 antenna for 120kHz front view	13
7.2.	DC130 antenna for 120kHz back view	13

2. General information

2.1. Description of EUT

Description of EUT	Long-range vehicle and driver identification reader operating on 2.45 GHz, 433 MHz and 120 kHz
Manufacturer	Nedap N.V.
Brand	Nedap
Model	TRANSIT ULTIMATE
FCC ID	CGDTRANSITULT2
IC	1444A-TRANSITULT2

2.2. Applicant information

Applicant's representative	Mr. Khodr Hammoud
Company	Nedap N.V.
Address	Parallelweg 2
Postal code	7141 DC
City	Groenlo
Country	The Netherlands
Telephone number	+31 (0) 544 471111
Telefax number	+31 (0) 544 463475

3. Overview TRANSIT ULTIMATE

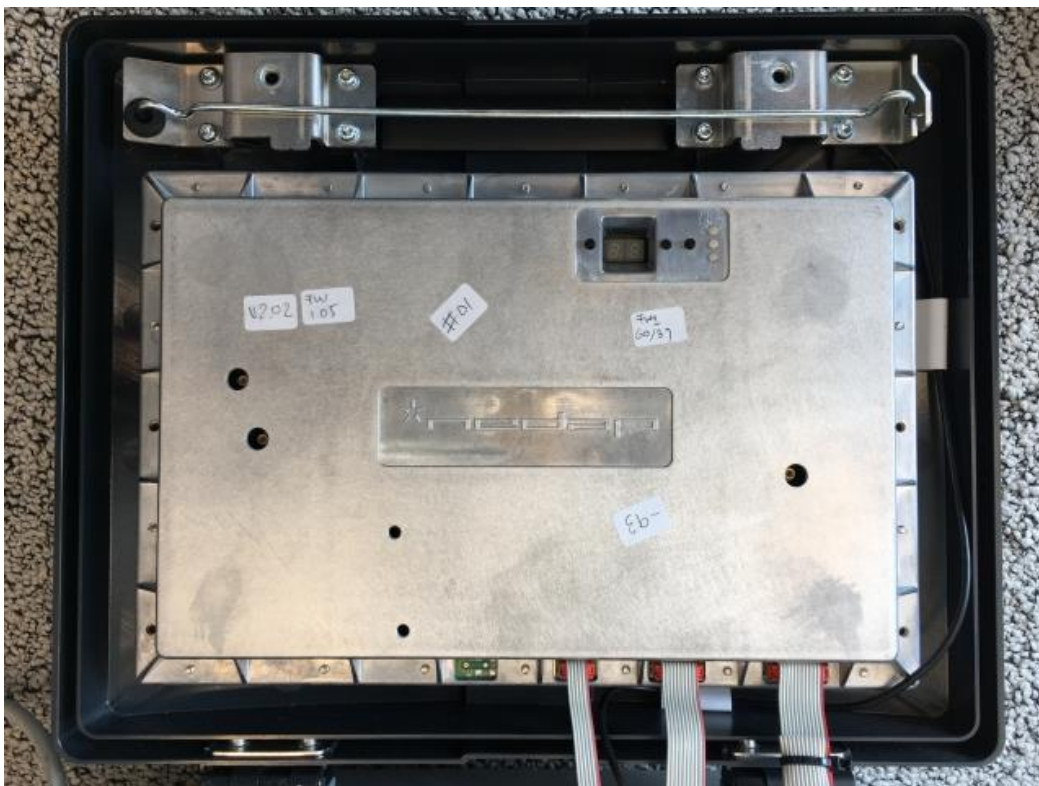


4. Case opened

4.1. Total overview



4.2. Photograph of 2.45GHz transmitter



4.3. Power supply, 433MHz board, 120kHz and RS485



5. Overview SPS270 board

5.1. Total Overview



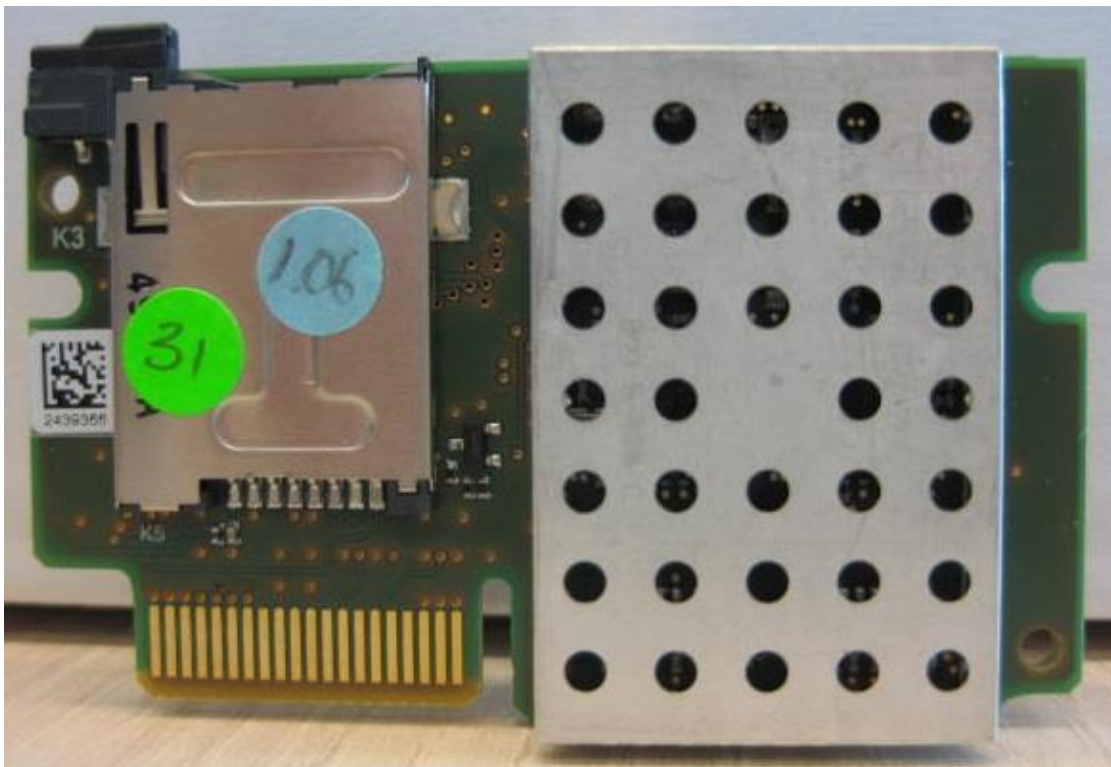
5.2. Power supply and control board front view



5.3. Power supply and control board back view



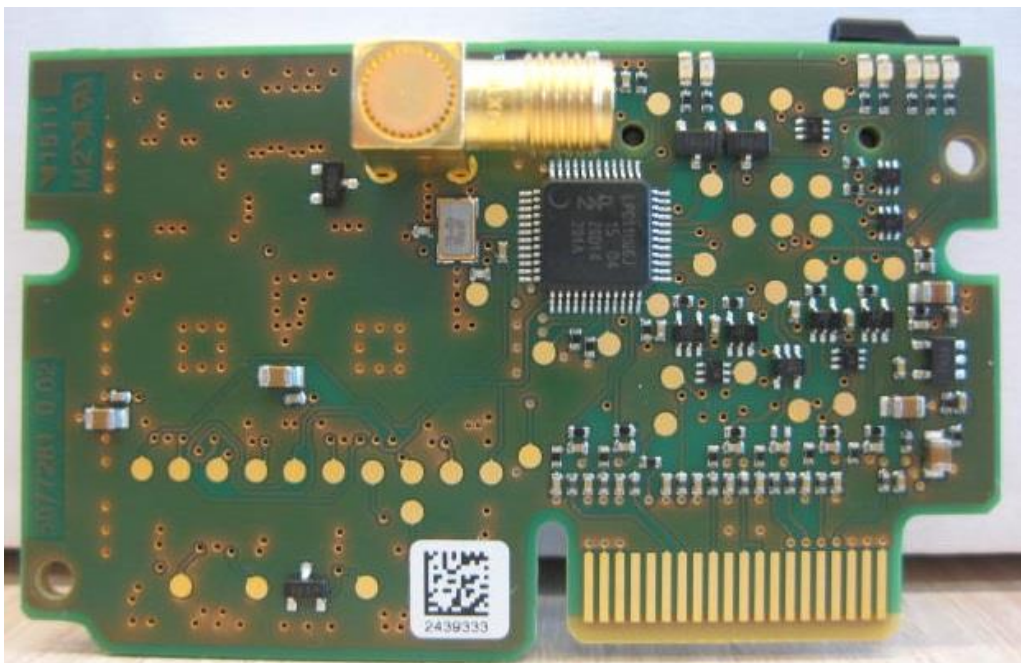
5.4. 433 MHz board



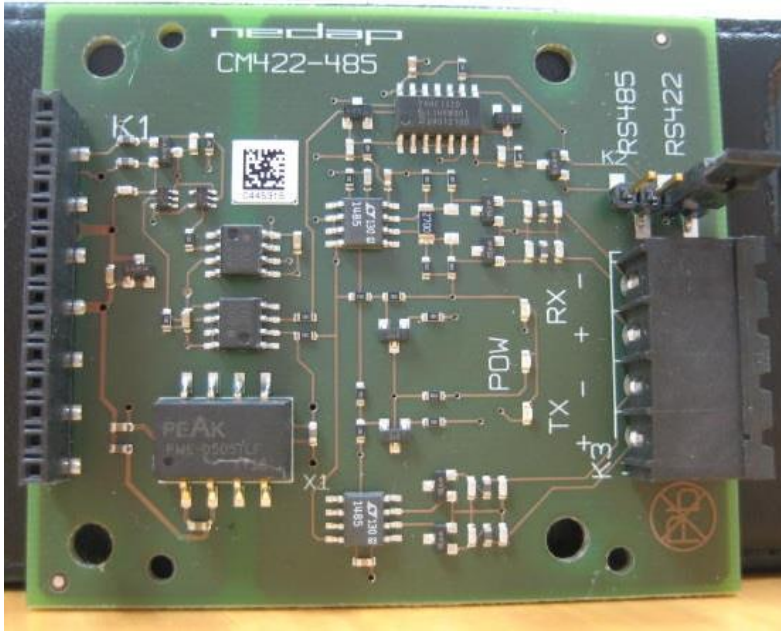
5.5. 433 MHz board without metal cover front view



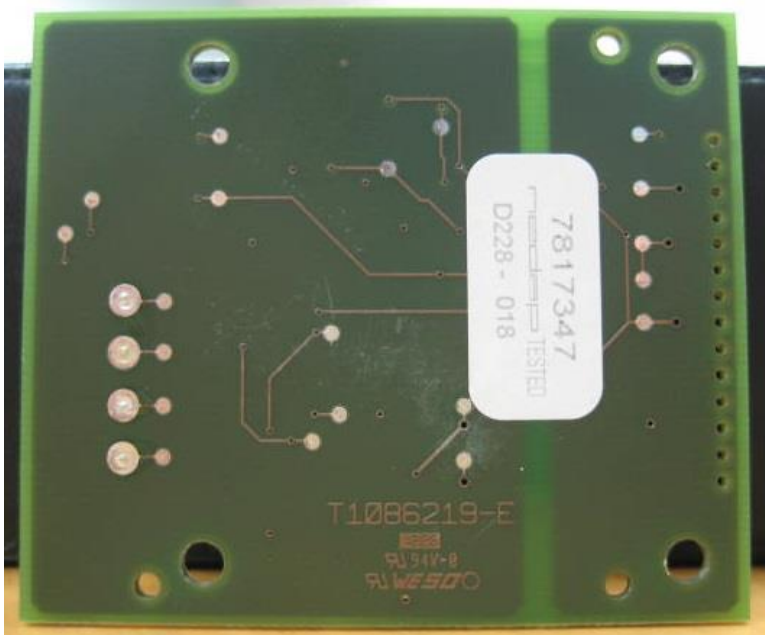
5.6. 433 MHz board back view



5.7. RS485 board front view

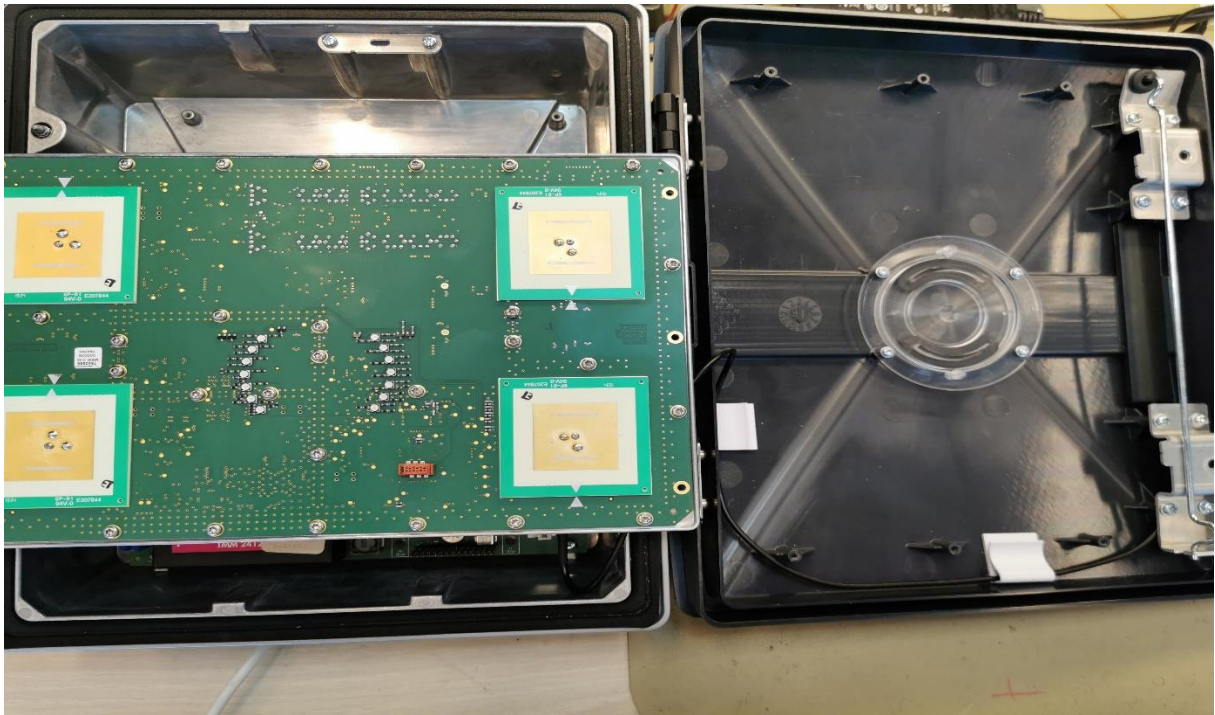


5.8. RS485 board back view

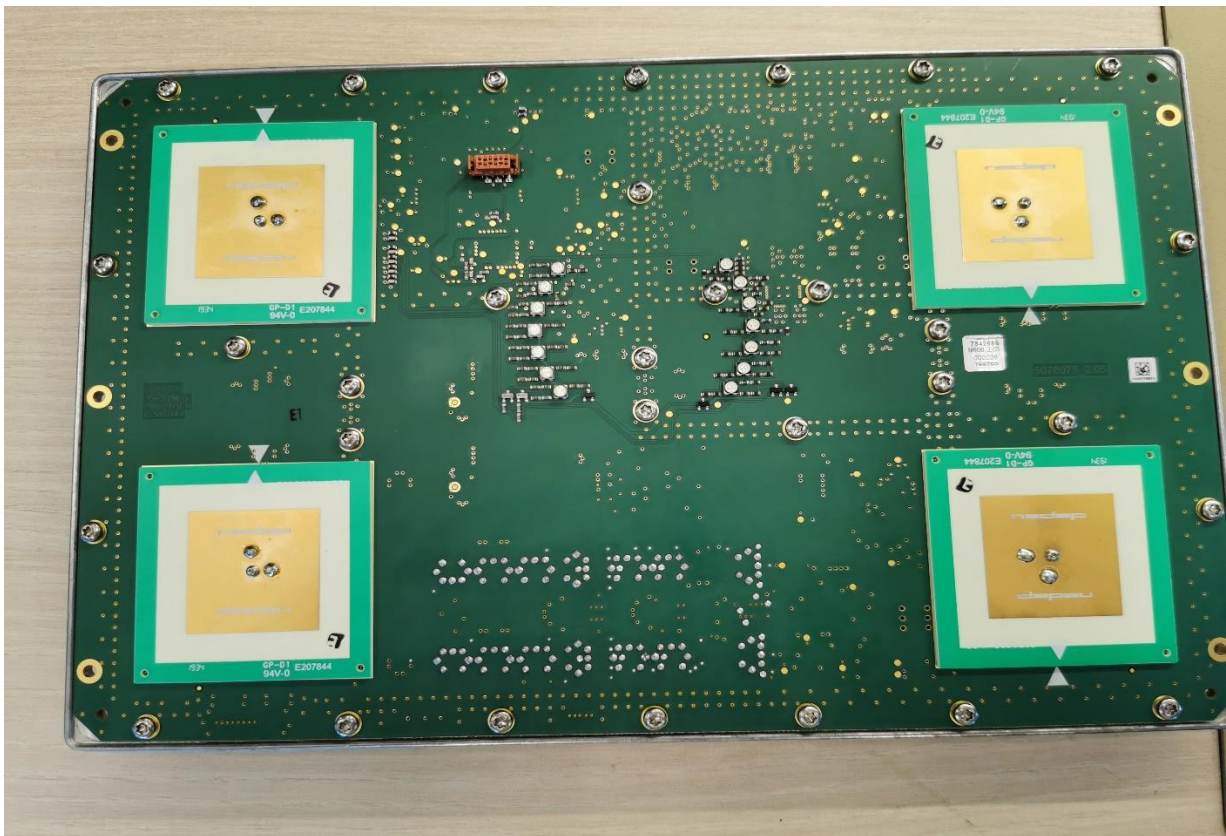


6. 2.45 GHz Part

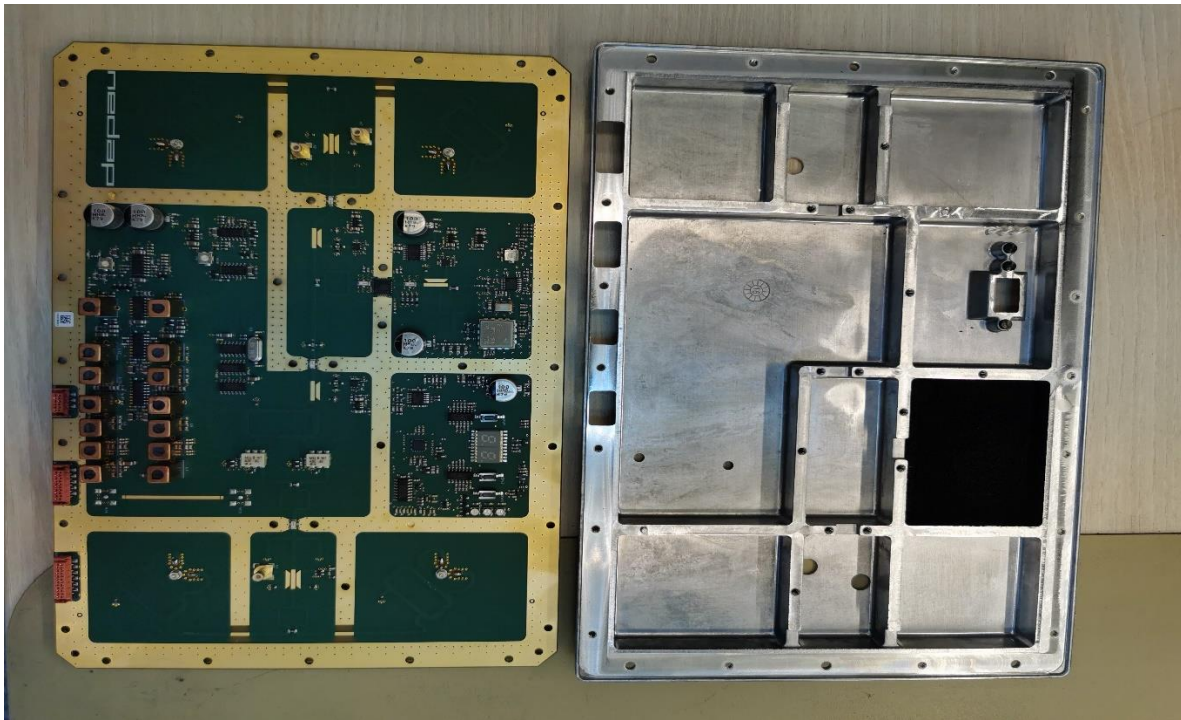
6.1. 2.45 GHz transmitter in housing



6.2. 2.45 GHz transmitter board front view



6.3. 2.45 GHz transmitter board back view with metal housing



6.4. 2.45 GHz transmitter board back view



7. 120kHz antenna

7.1. DC130 antenna for 120kHz front view



7.2. DC130 antenna for 120kHz back view

