

Photo report internal components

Long-range vehicle and driver identification reader
operating on 2.45 GHz, 433 MHz and 120 kHz
Brand: Nedap
Model: TRANSIT ULTIMATE

Author	RH
Date	21 August 2017
Status	final

N.V. Nederlandsche Apparatenfabriek "Nedap"
Parallelweg 2
7141 DC Groenlo
The Netherlands

Description of EUT

Description of EUT	Long-range vehicle and driver identification reader operating on 2.45 GHz, 433 MHz and 120 kHz
Manufacturer	Nedap N.V.
Brand	Nedap
Model	TRANSIT ULTIMATE
FCC ID	CGDTRANSITULT2
IC	1444A-TRANSITULT2
Type of service	New Application

Applicant Information

Applicant's representative	Mr. Reinold Hubers
Company	N.V. Nederlandsche Apparatenfabriek "Nedap"
Address	Parallelweg 2
Postal code	7141 DC
City	Groenlo
PO Box	6
Postal code	7140 AA
City	Groenlo
Country	The Netherlands
Telephone number	+31 (0) 544 471111
Telefax number	+31 (0) 544 463475

0. CONTENTS

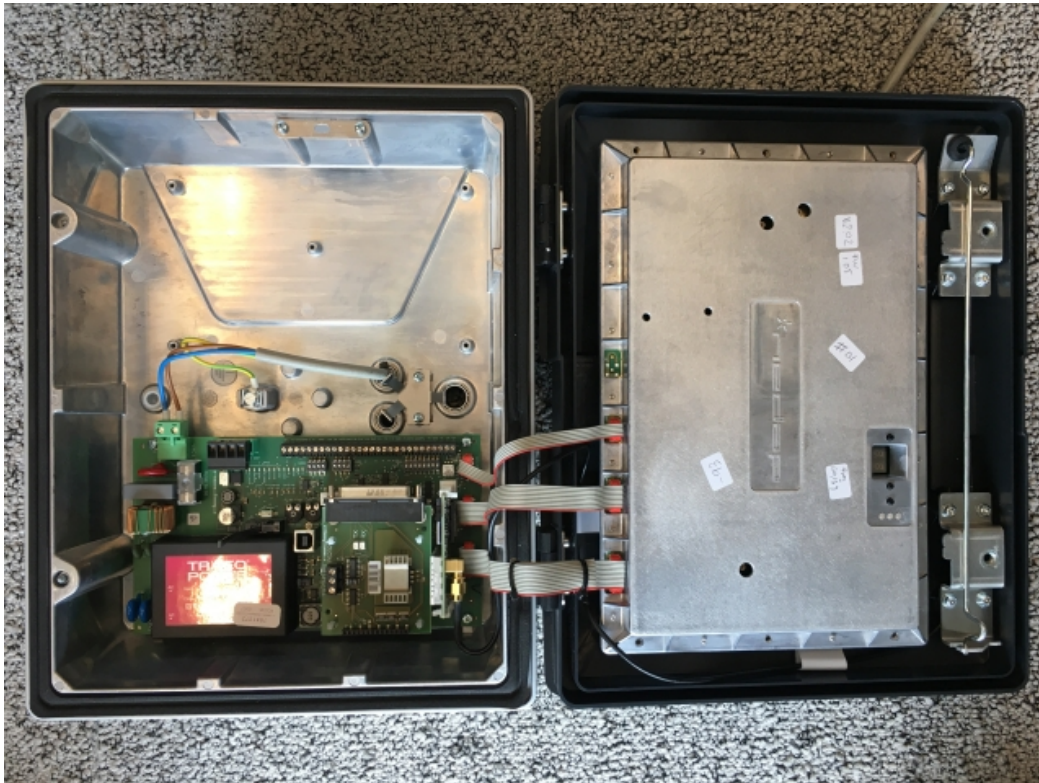
1. Overview TRANSIT ULTIMATE _____	4
2. Case opened _____	5
2.1. Total overview _____	5
2.2. Photograph of 2.45GHz transmitter _____	5
2.3. Photograph of power supply, 433MHz board, 120kHz and RS485 _____	6
3. Overview SPS270 board _____	7
3.1. Total Overview _____	7
3.2. Power supply and control board front view _____	7
3.3. Power supply and control board back view _____	8
3.4. 433 MHz board _____	8
3.5. 433 MHz board without metal cover front view _____	9
3.6. 433 MHz board back view _____	9
3.7. RS485 board front view _____	10
3.8. RS485 board back view _____	10
4. 2.45 GHz Part _____	11
4.1. 2.45 GHz transmitter in housing _____	11
4.2. 2.45 GHz transmitter board front view _____	11
4.3. 2.45 GHz transmitter board back view with metal housing _____	12
4.4. 2.45 GHz transmitter board back view _____	12
5. 120kHz antenna _____	13
5.1. DC130 antenna for 120kHz front view _____	13
5.2. DC130 antenna for 120kHz back view _____	13

1. Overview TRANSIT ULTIMATE

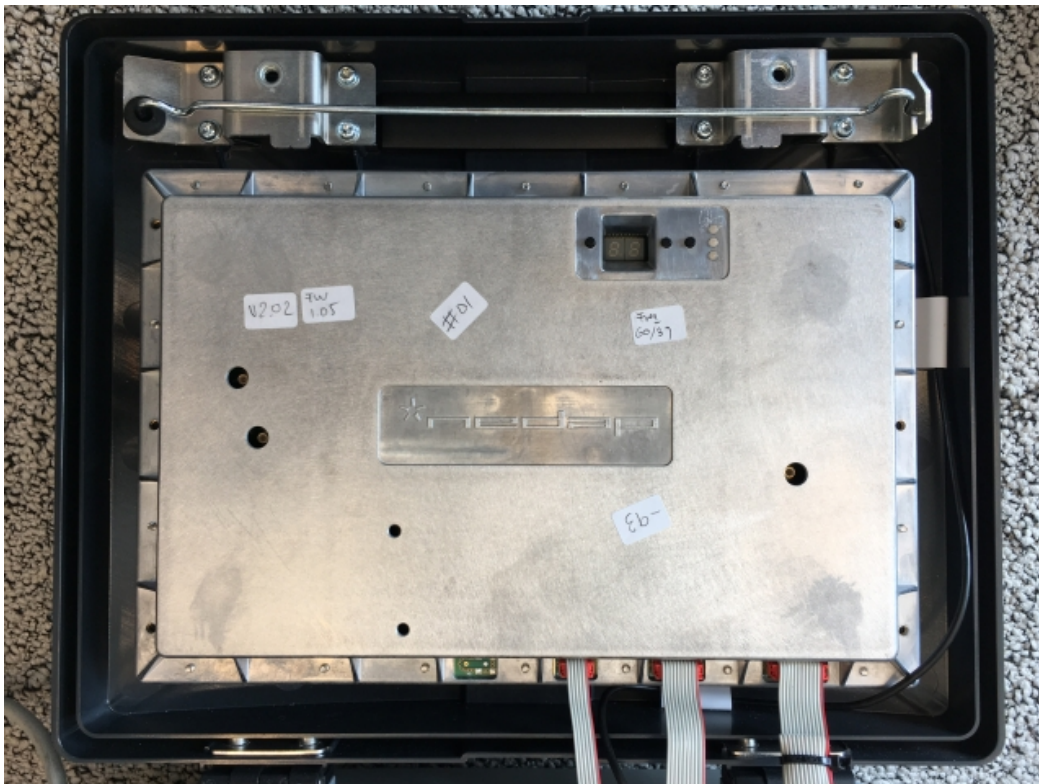


2. Case opened

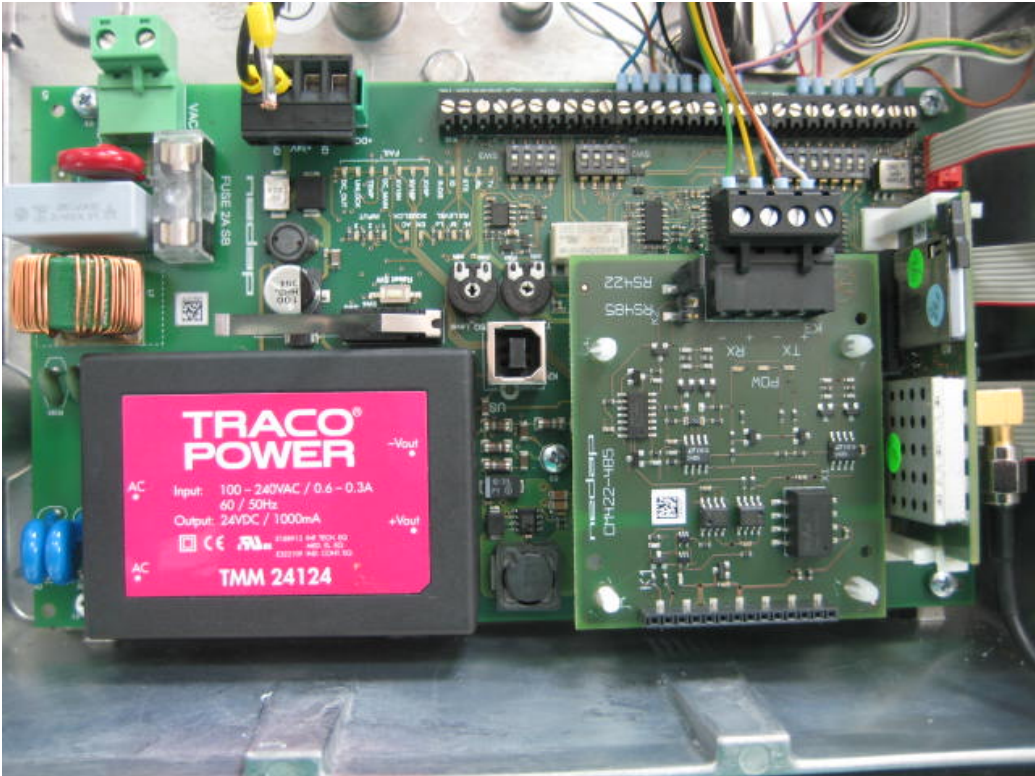
2.1. Total overview



2.2. Photograph of 2.45GHz transmitter



2.3. Photograph of power supply, 433MHz board, 120kHz and RS485



3. Overview SPS270 board

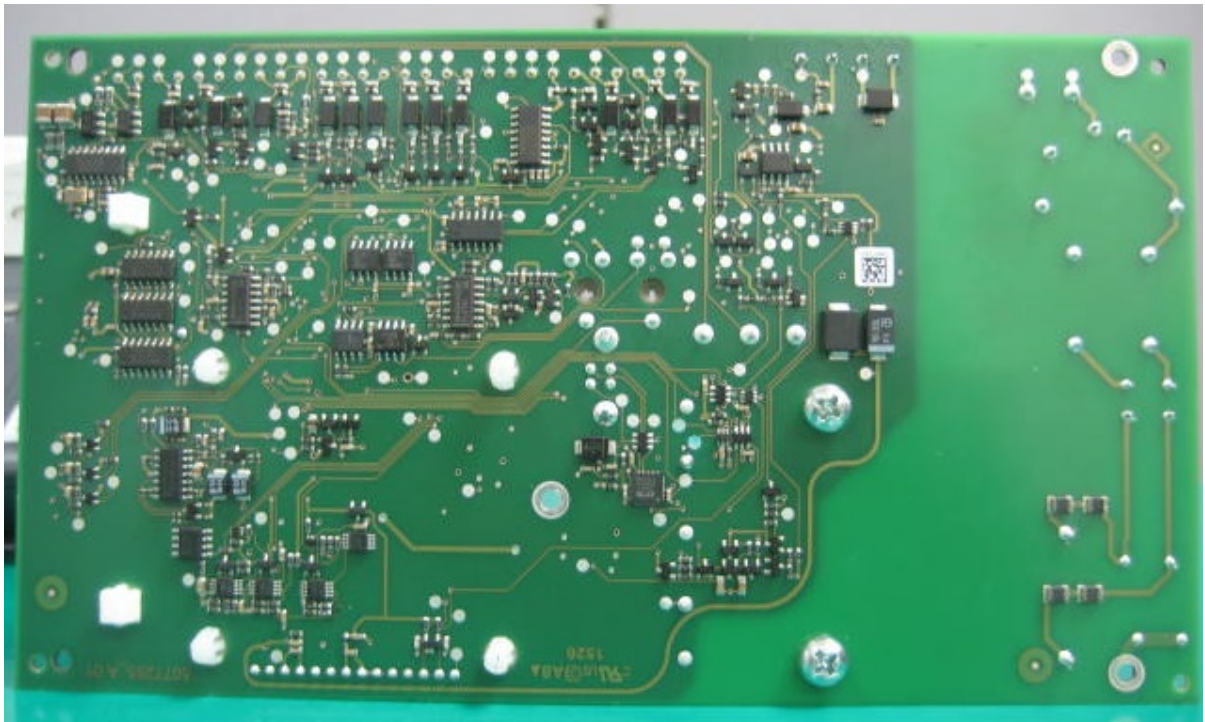
3.1. Total Overview



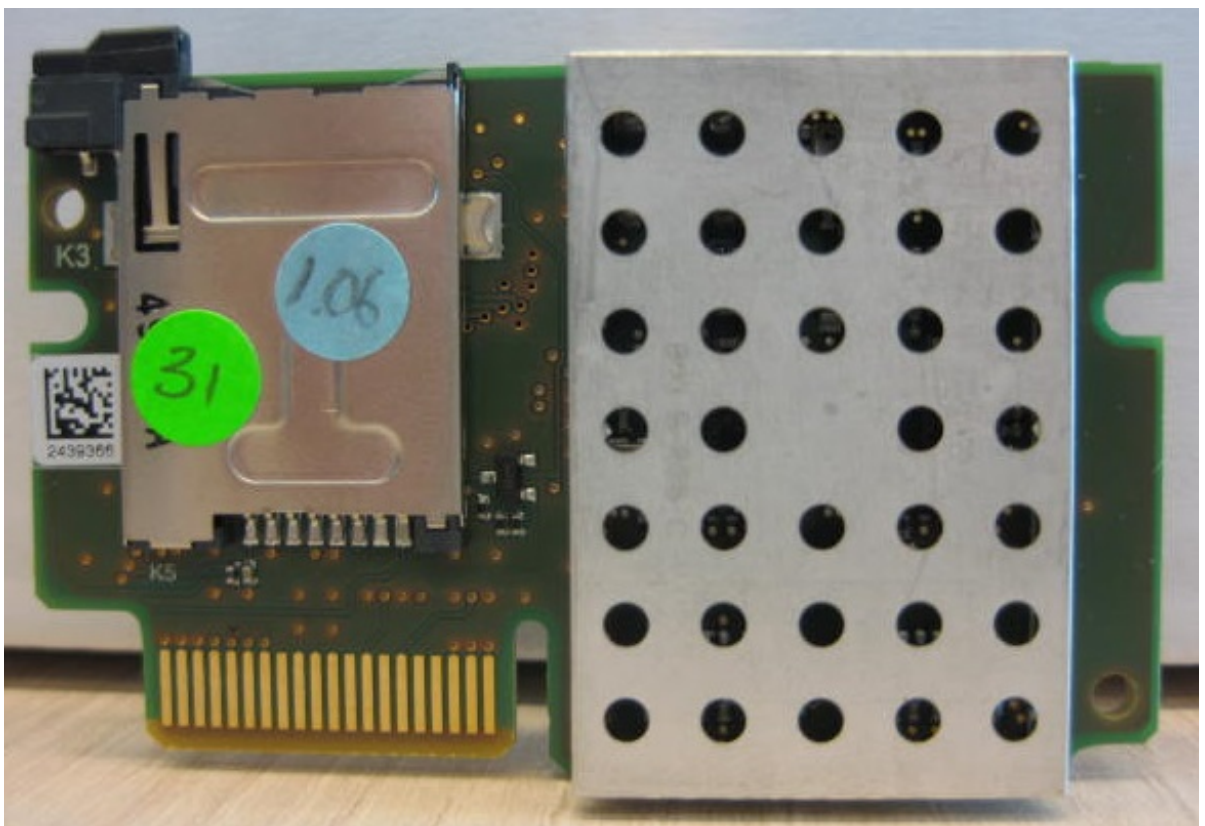
3.2. Power supply and control board front view



3.3. Power supply and control board back view



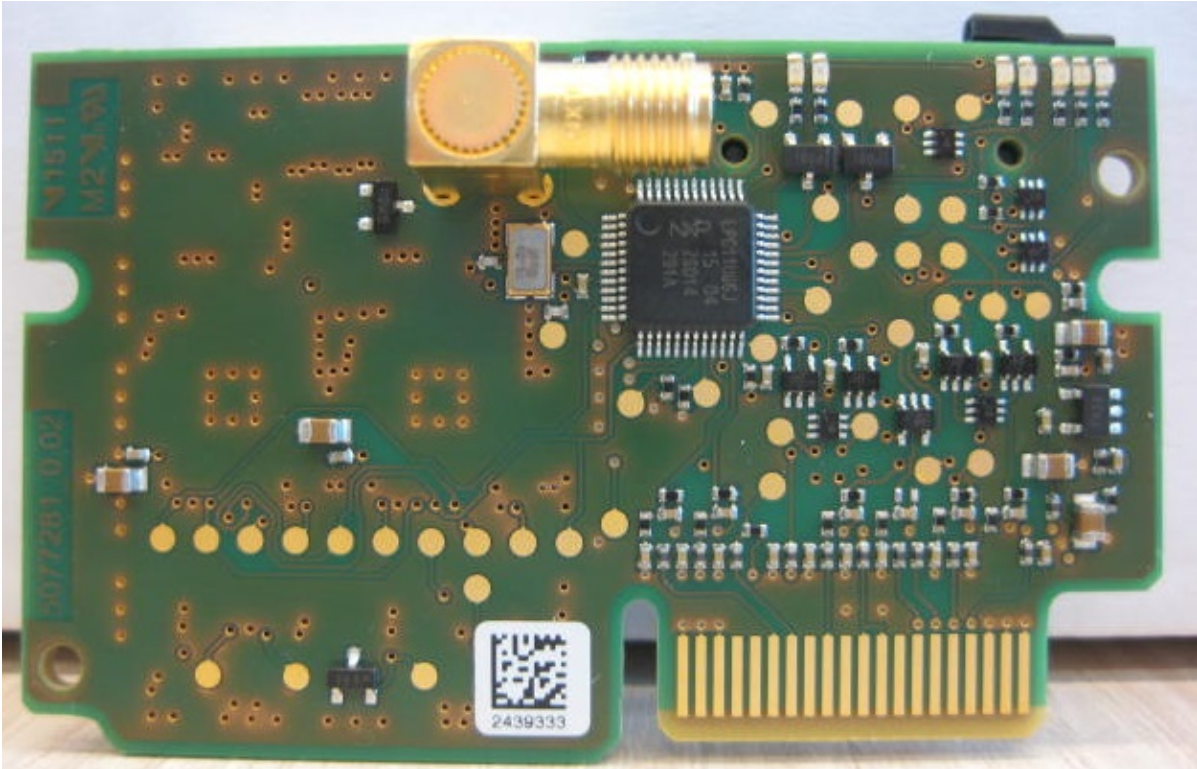
3.4. 433 MHz board



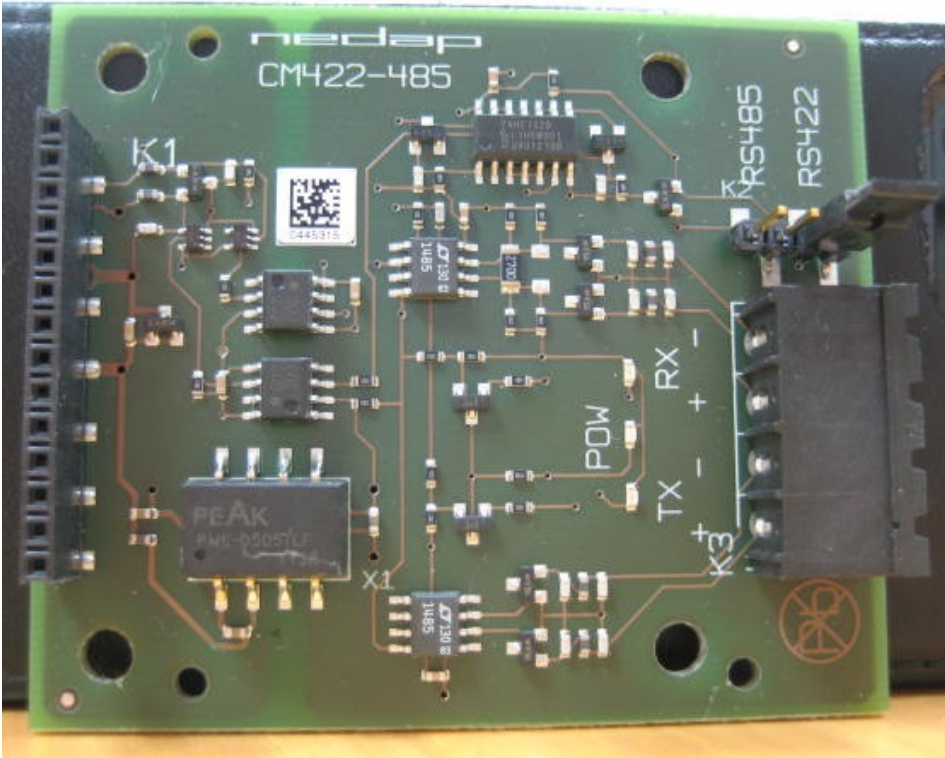
3.5. 433 MHz board without metal cover front view



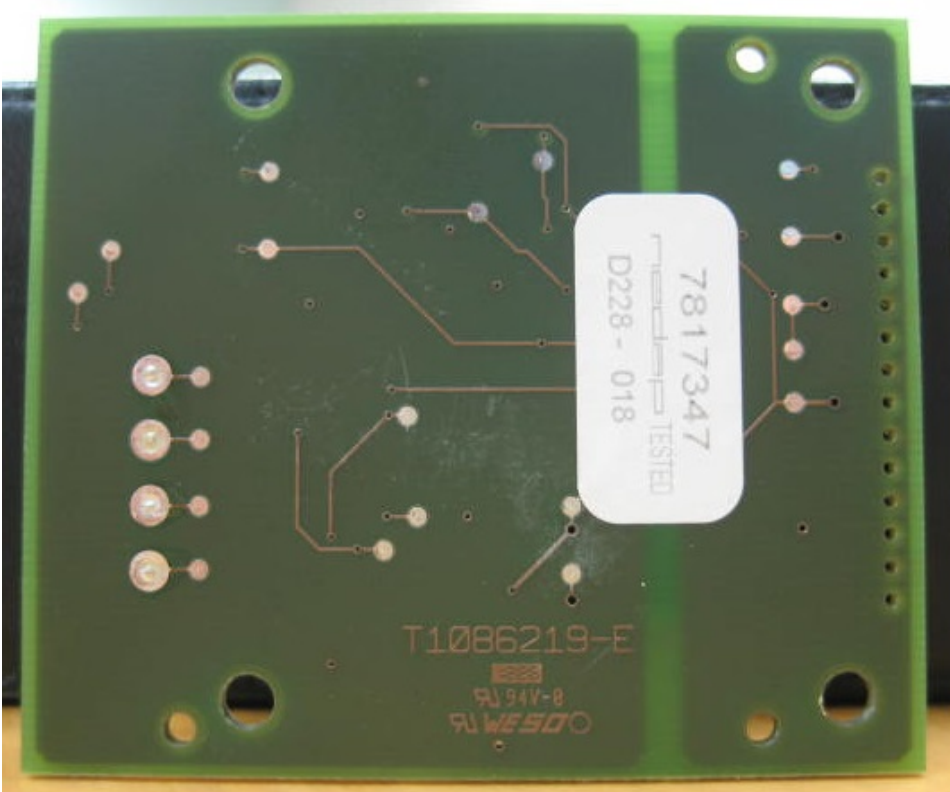
3.6. 433 MHz board back view



3.7. RS485 board front view

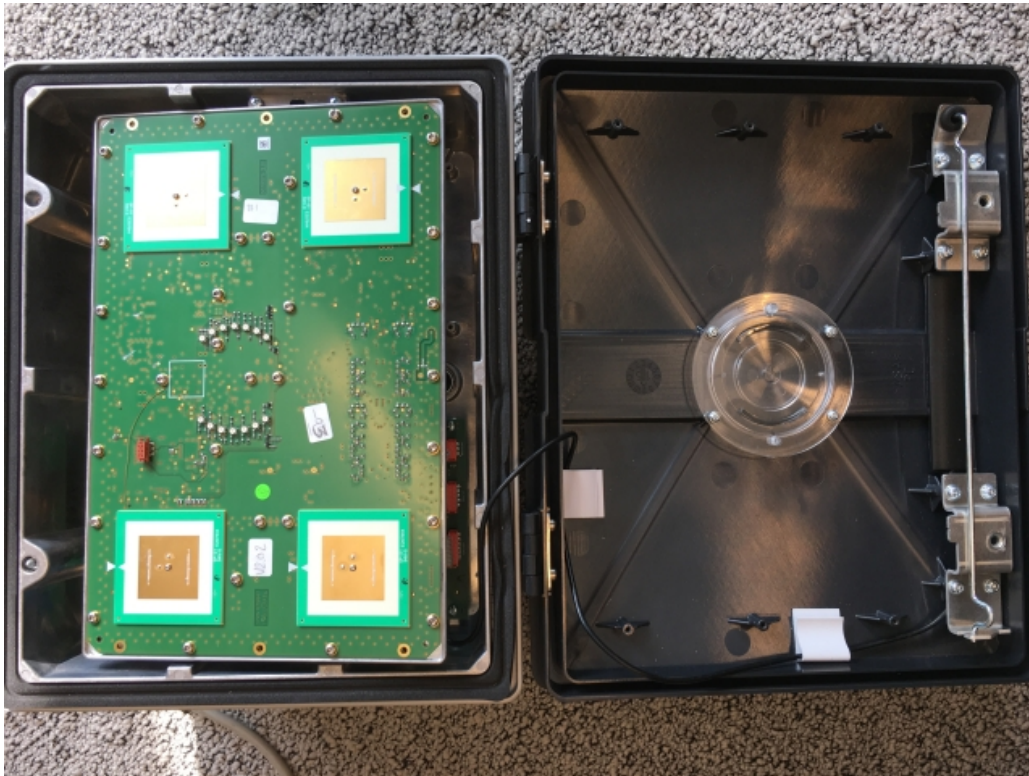


3.8. RS485 board back view

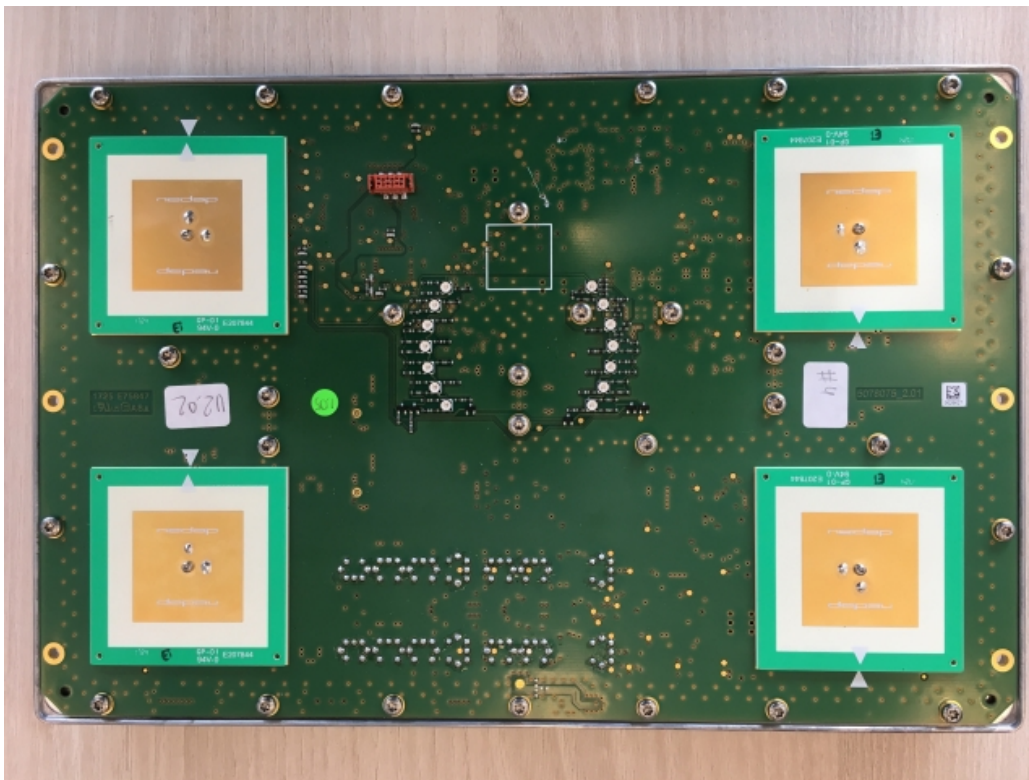


4. 2.45 GHz Part

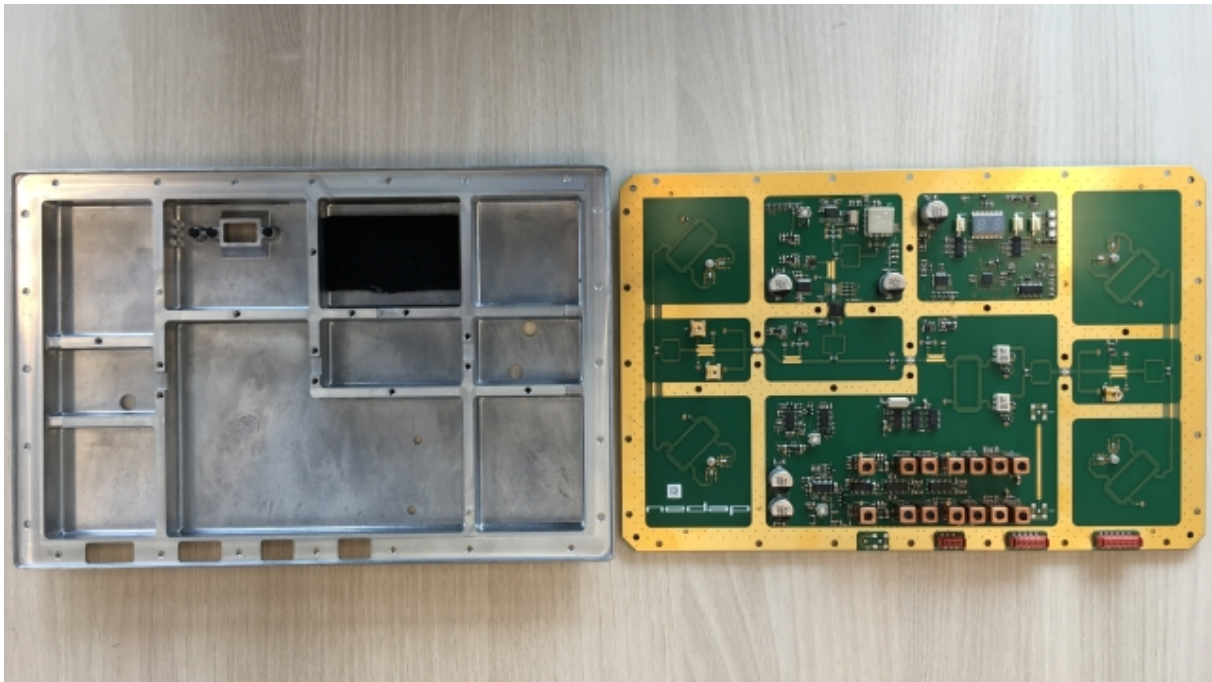
4.1. 2.45 GHz transmitter in housing



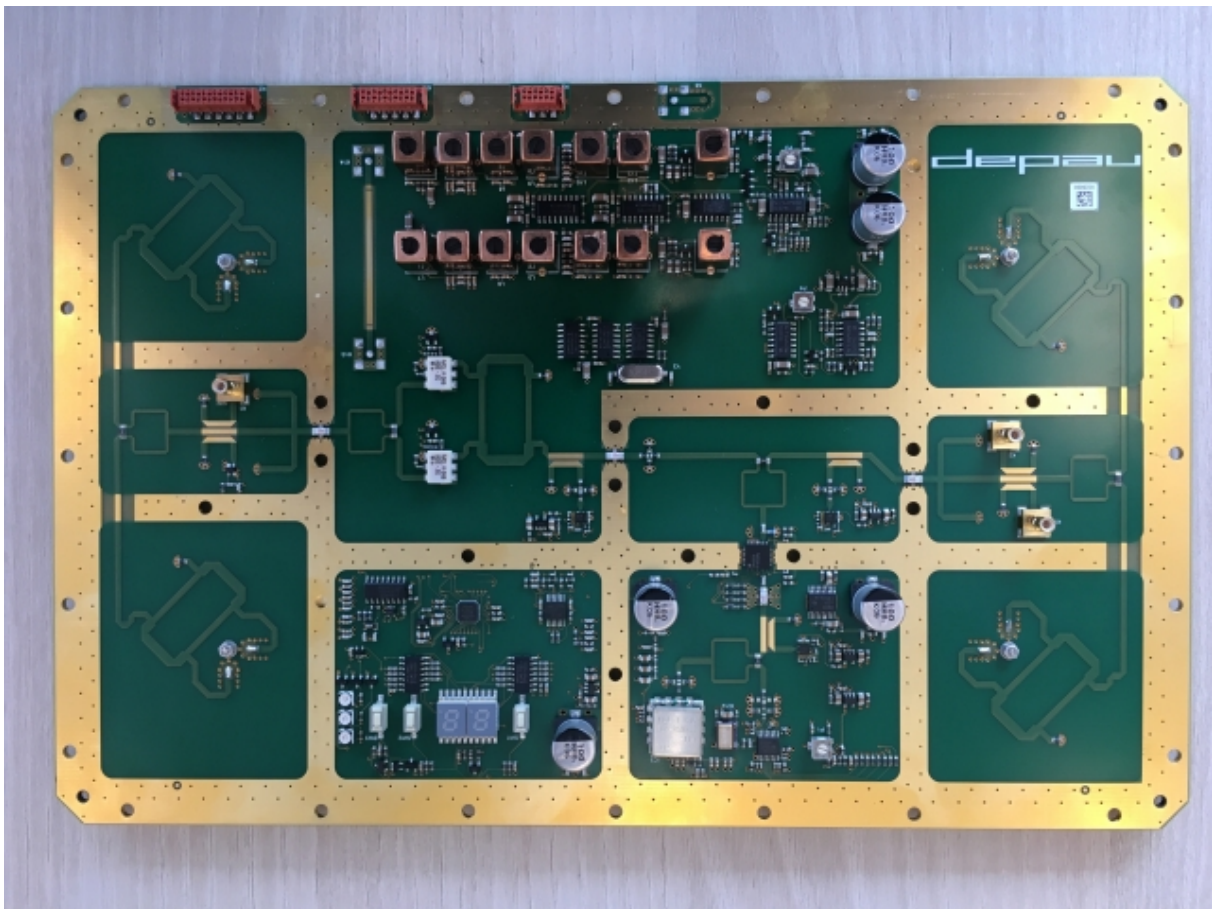
4.2. 2.45 GHz transmitter board front view



4.3. 2.45 GHz transmitter board back view with metal housing



4.4. 2.45 GHz transmitter board back view



5. 120kHz antenna

5.1. DC130 antenna for 120kHz front view



5.2. DC130 antenna for 120kHz back view

