

**PHOTOGRAPHS OF THE INTERIOR OF A 2.4 GHZ
MICROWAVE ID SYSTEM, BRAND NEDAP,
MODEL TRANSIT EDGE WIRELESS WITH INSTALLED
ETHERNET RADIO DATA LINK
(902-928 MHZ)**

FCC listed : 90828
Industry Canada : IC3501A
VCCI Registered : R-1518, C-1598
R&TTE, LVD, EMC Notified Body : 1856

TÜV Rheinland EPS B.V.
P.O. Box 15
9822 ZG Niekerk (NL)
Smidshornerweg 18
9822 TL Niekerk (NL)

Telephone: +31 594 505005
Telefax: +31 594 504804

Internet: www.tuv-eps.com
E-mail: info@tuv-eps.com



Description of test item

Test item : 2.4 GHz Microwave ID system (Field disturbance sensor)
Manufacturer : N.V. Nederlandsche Apparatenfabriek "Nedap"
Brand : Nedap
Model(s) : TRANSIT EDGE WIRELESS
Serial number(s) : n.a.
Revision : n.a.
Receipt date : July 16, 2008

Applicant information

Applicant's representative : Mr. J.A.M. Hulshof
Company : N.V. Nederlandsche Apparatenfabriek "Nedap"
Address : Parallelweg 2
Postal code : 7141 DC
City : Groenlo
Country : The Netherlands
Telephone number : +31 544 471 162
Telefax number : +31 544 463 475



Table of contents

1.1	OVERVIEW.....	4
1.2	CLOSE-UP OF THE WIRELESS ETHERNET RADIO MODULE.....	5
1.3	OPENED EUT OVERVIEW.....	6
1.4	PRINT AW900MT.....	7
1.5	PRINT AW900MT REAR.....	8
1.6	SIDE VIEW OF THE MODEM (ANTENNA SIDE).....	9
1.7	SIDE VIEW OF THE MODEM (CONNECTOR SIDE).....	10
1.8	PRINT LOWER BOARD EDGEPLUS SOLO ES400.....	11
1.9	PRINT LOWER BOARD EDGEPLUS SOLO ES400-REAR.....	12
1.10	TRANSIT FRONT WITHOUT RS232 BOARD.....	13
1.11	TRANSIT FRONT WITH RS232 BOARD.....	14
1.12	TRANSIT REAR.....	15
1.13	POWER SUPPLY.....	16
1.14	POWER SUPPLY REAR.....	17
1.15	RS232 BOARD.....	18
1.16	RS232 BOARD REAR.....	19
1.17	PRINT UPPER BOARD EDGEPLUS SOLOES400 WITHOUT LABEL.....	20
1.18	PRINT UPPER BOARD EDGEPLUS SOLOES400 WITH LABEL.....	21
1.19	PRINT UPPER BOARD EDGEPLUS SOLOES400 REAR.....	22
1.20	PRINT SAM S.U.B. SQUELCH (UPPER SIDE).....	23
1.21	PRINT SAM S.U.B. SQUELCH (REAR SIDE).....	24
1.22	ANTENNA BOARD TOP SIDE.....	25
1.23	ANTENNA BOARD REAR SIDE.....	26

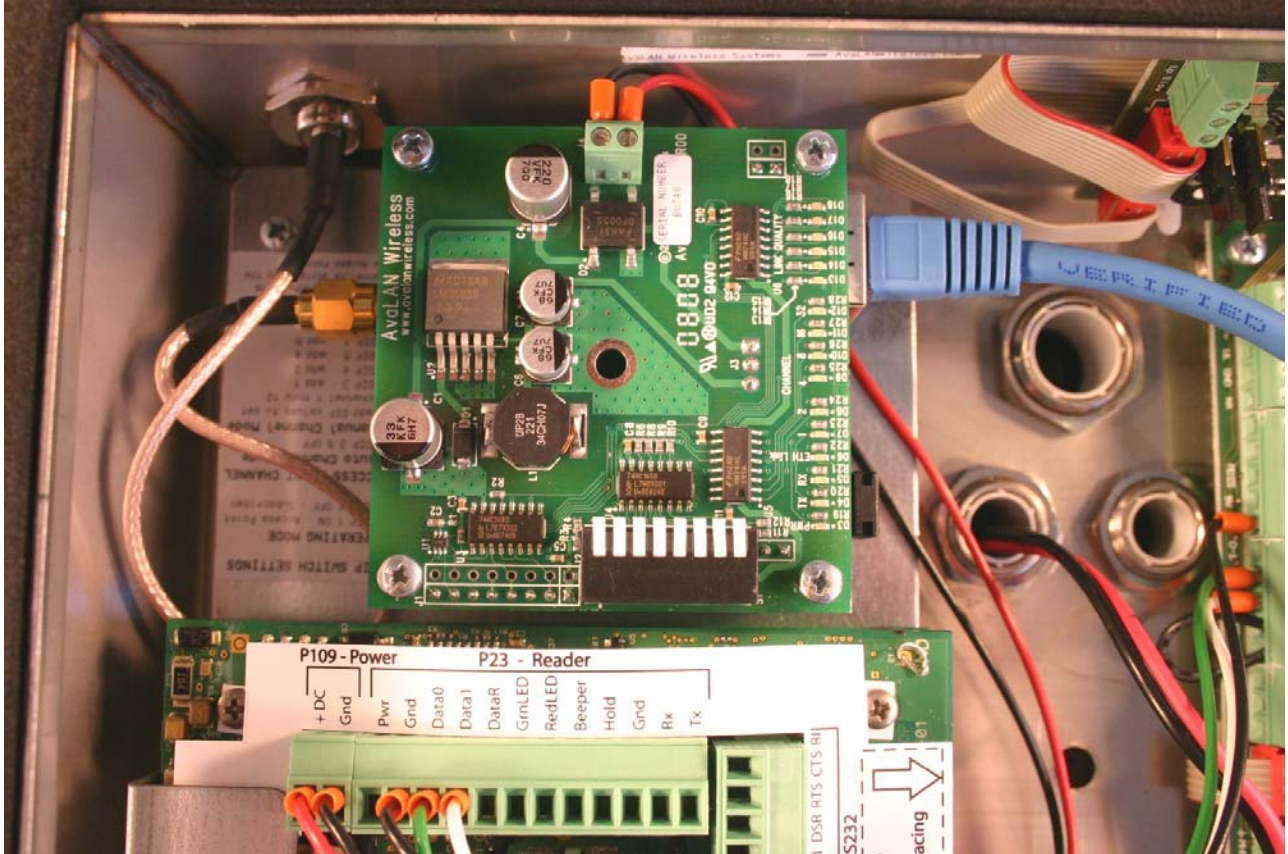
Photographs of the equipment.

1.1 Overview.





1.2 Close-up of the Wireless Ethernet Radio module

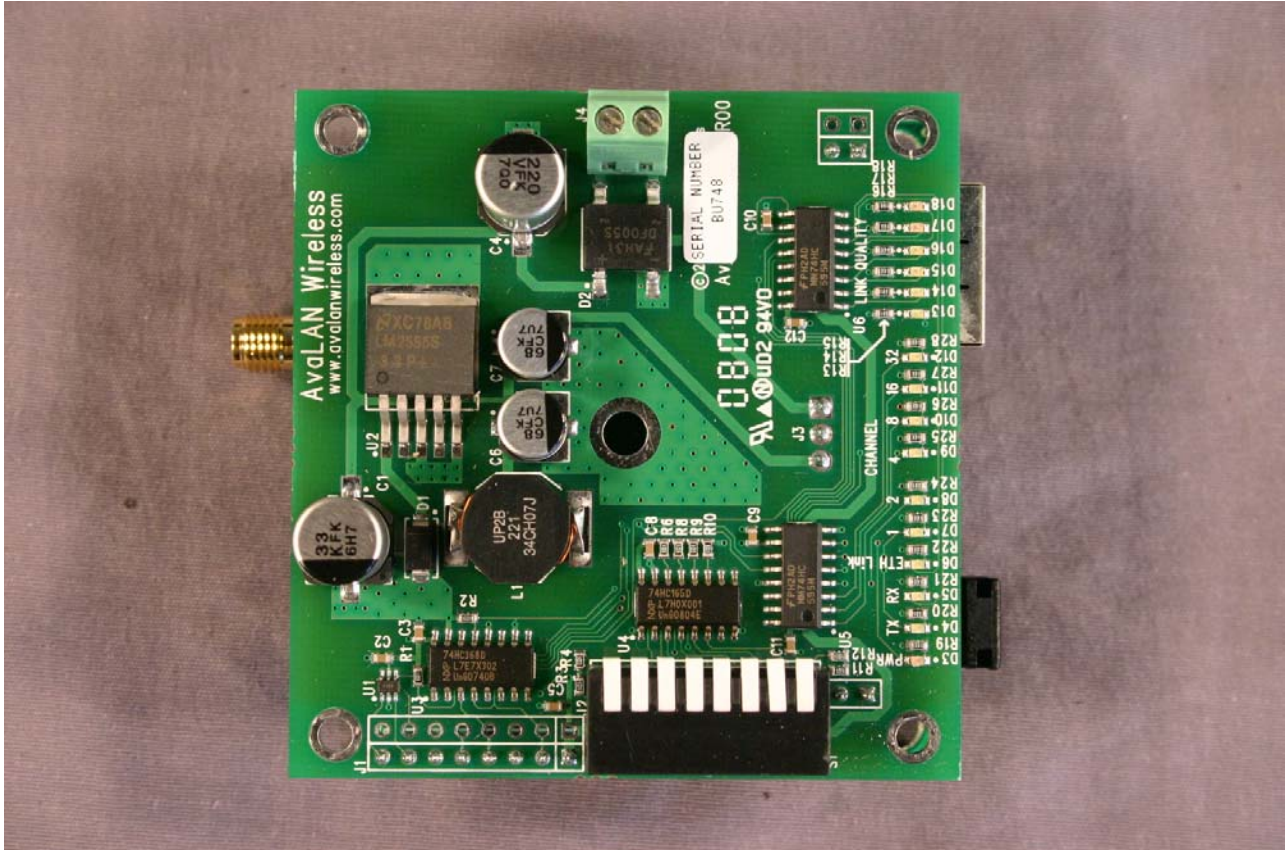


1.3 Opened EUT overview



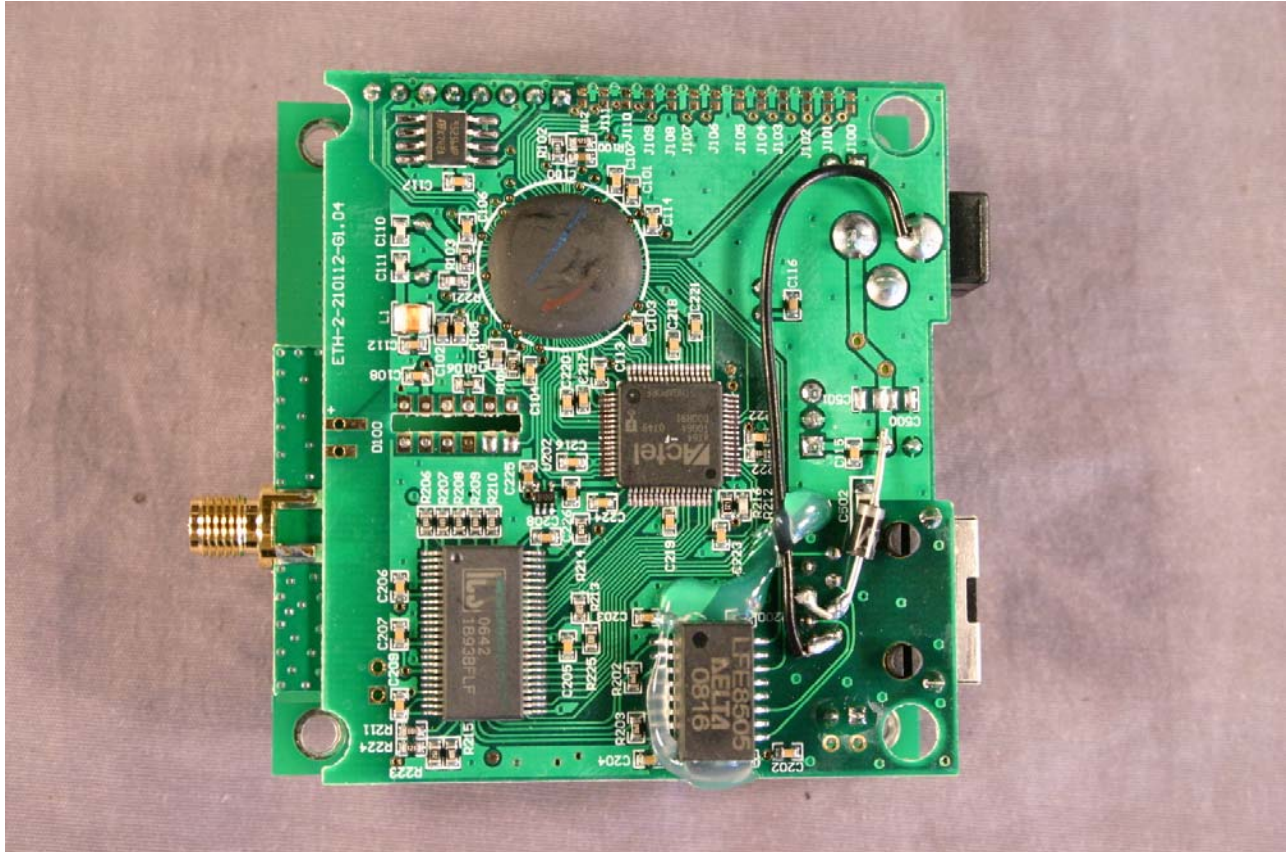


1.4 Print AW900MT



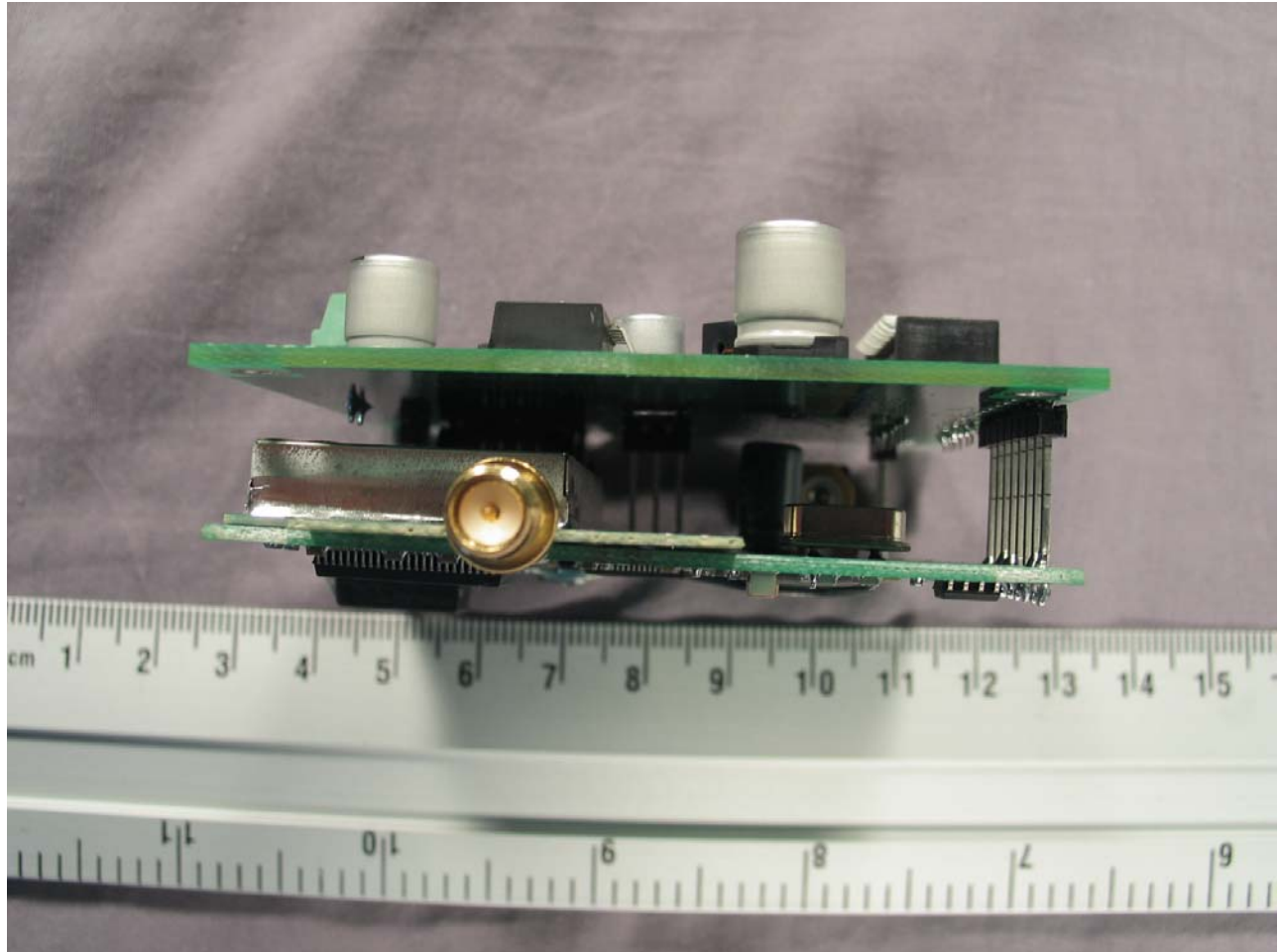


1.5 Print AW900MT Rear

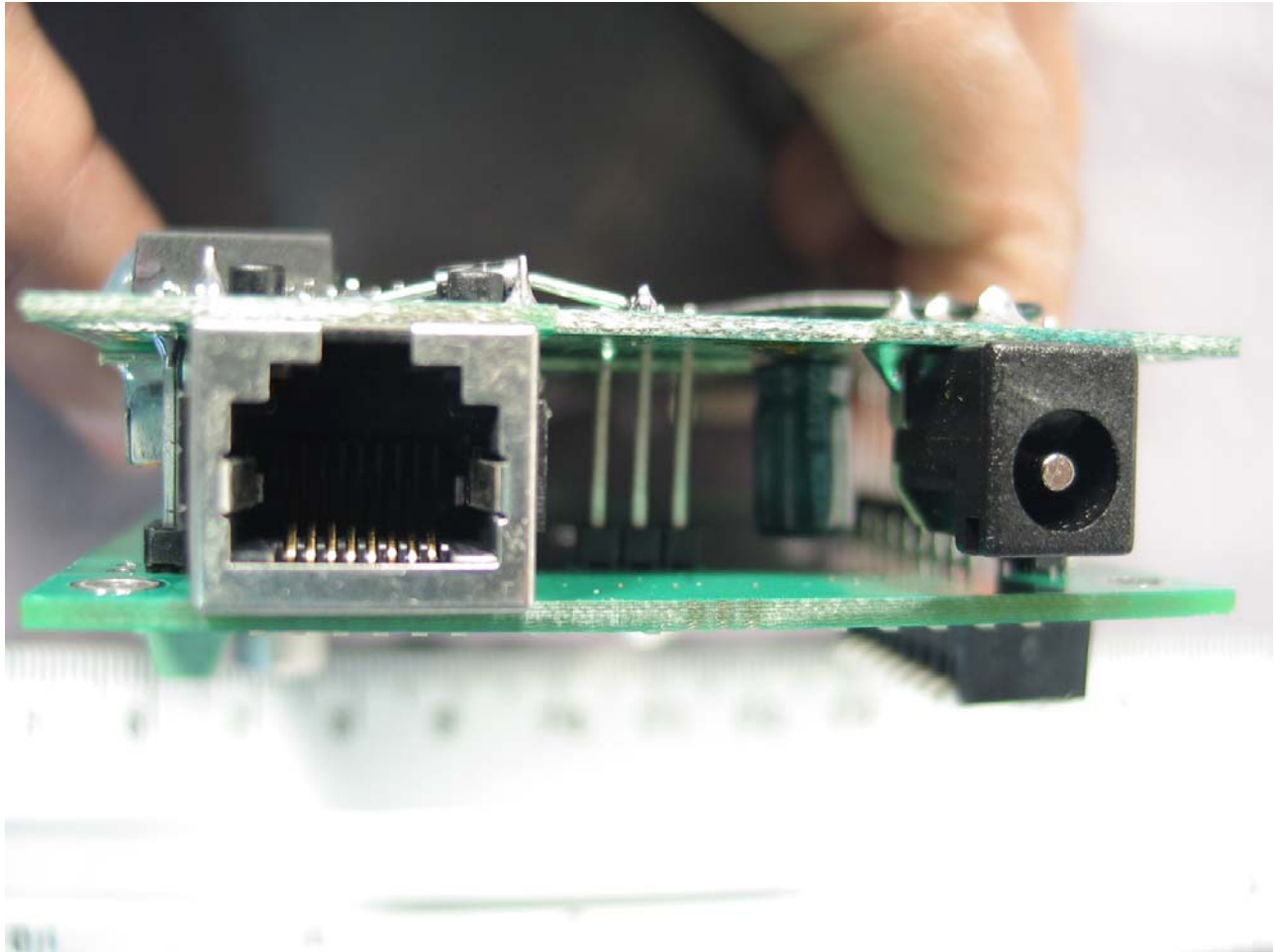




1.6 Side view of the modem (antenna side)

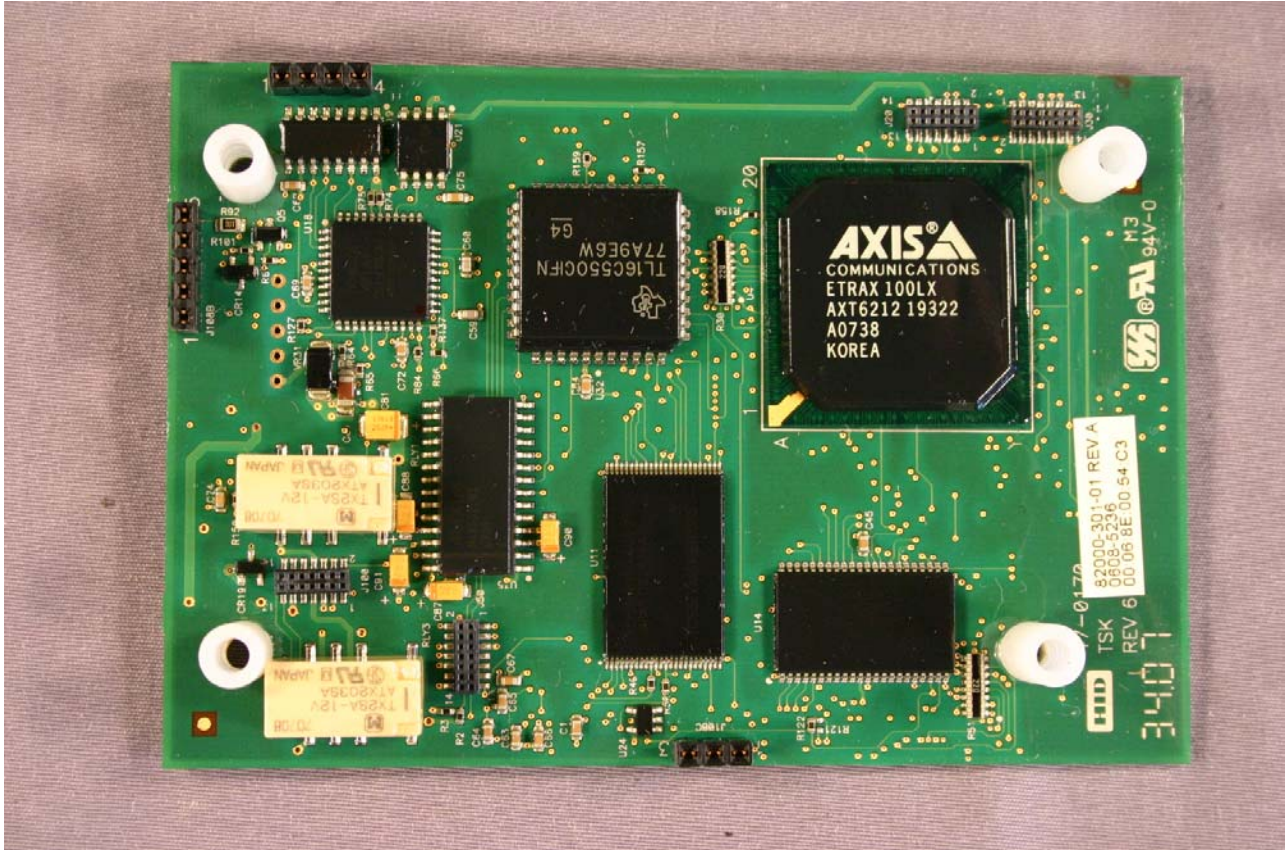


1.7 Side view of the modem (connector side)



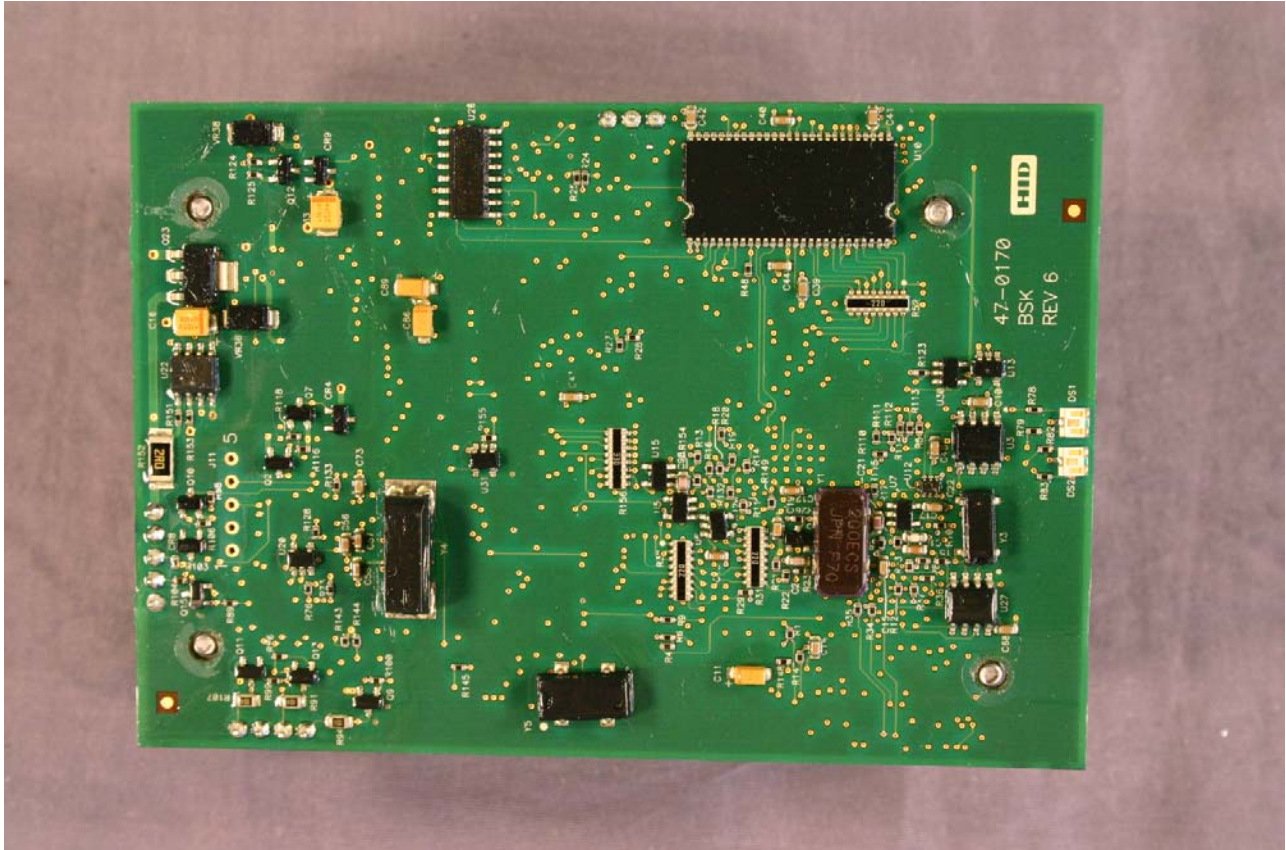


1.8 Print Lower Board EdgePlus Solo ES400





1.9 Print Lower Board EdgePlus Solo ES400-Rear





1.10 Transit Front without RS232 Board



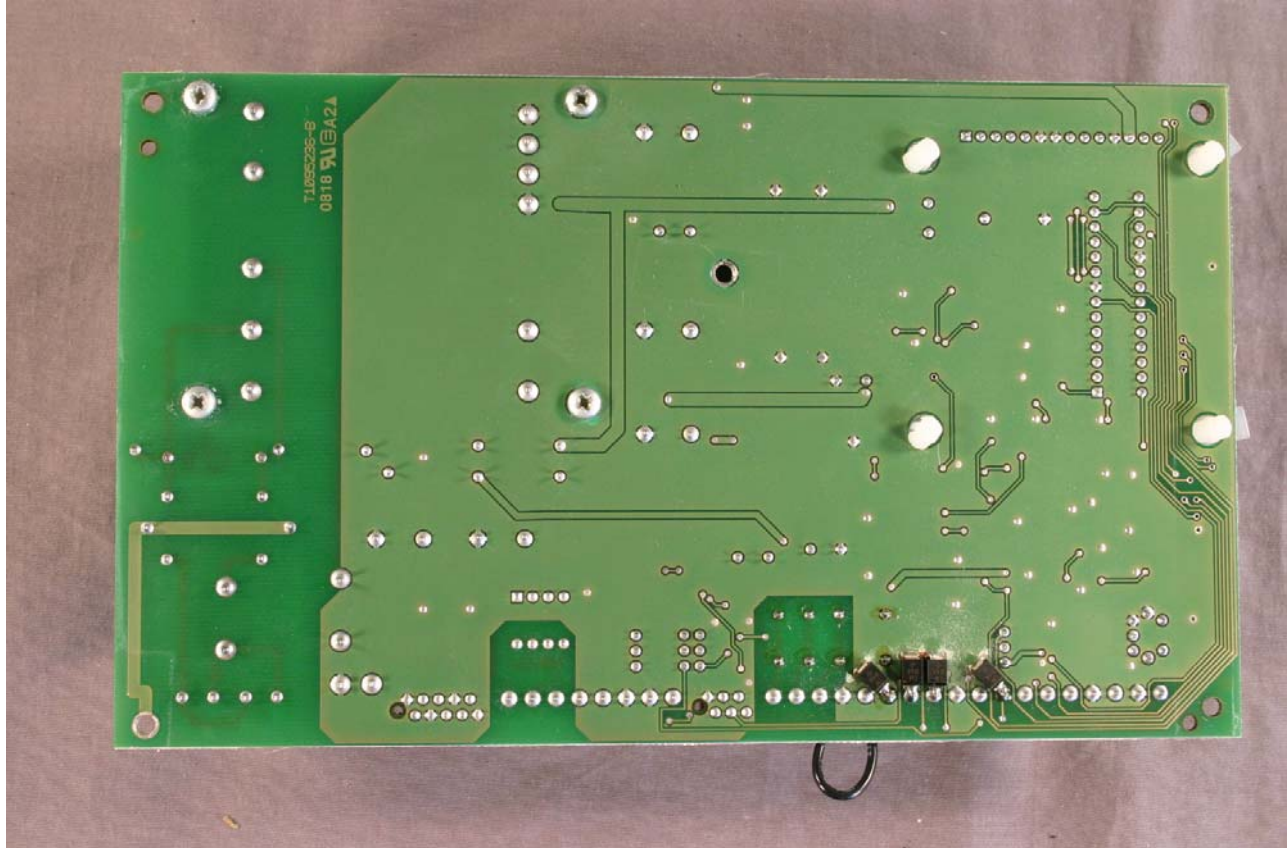


1.11 TransIT Front with RS232 Board



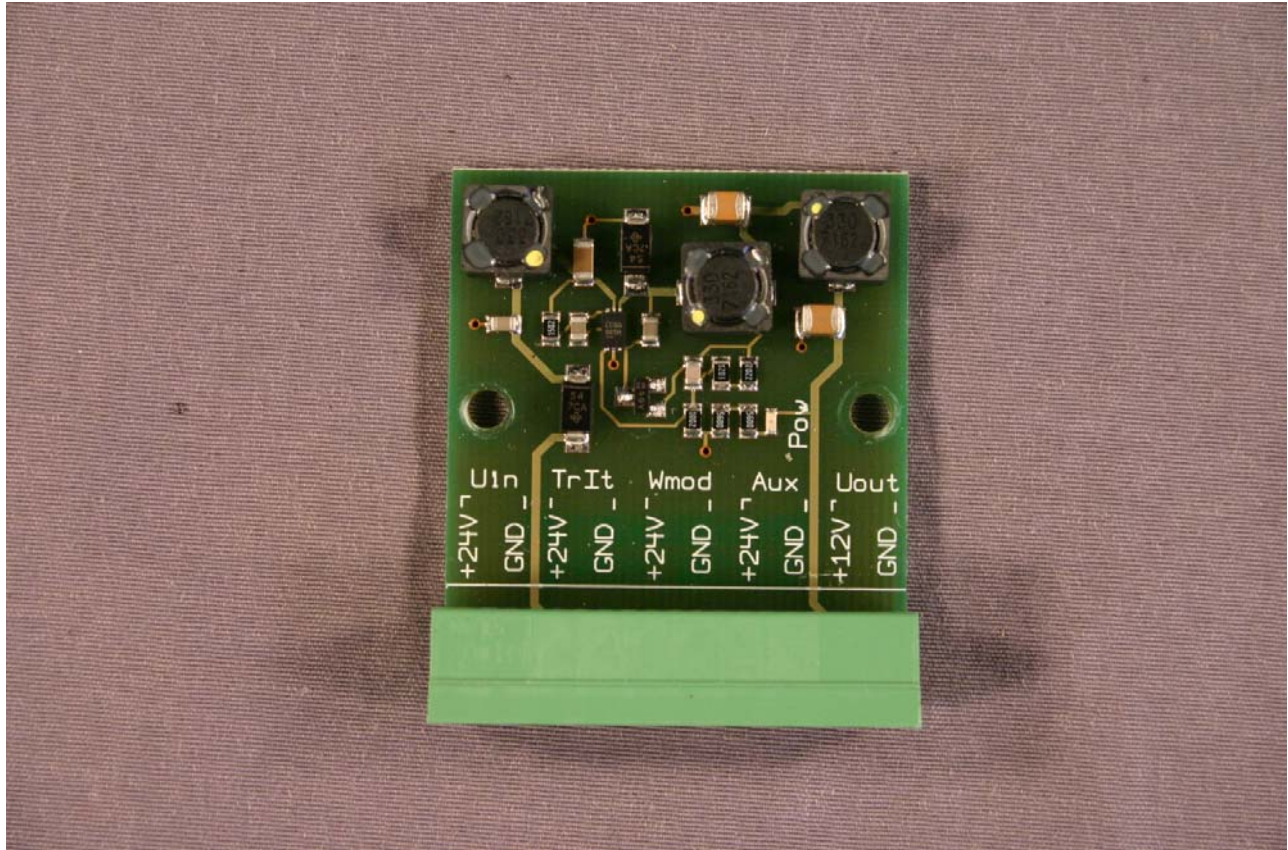


1.12 TransIT Rear



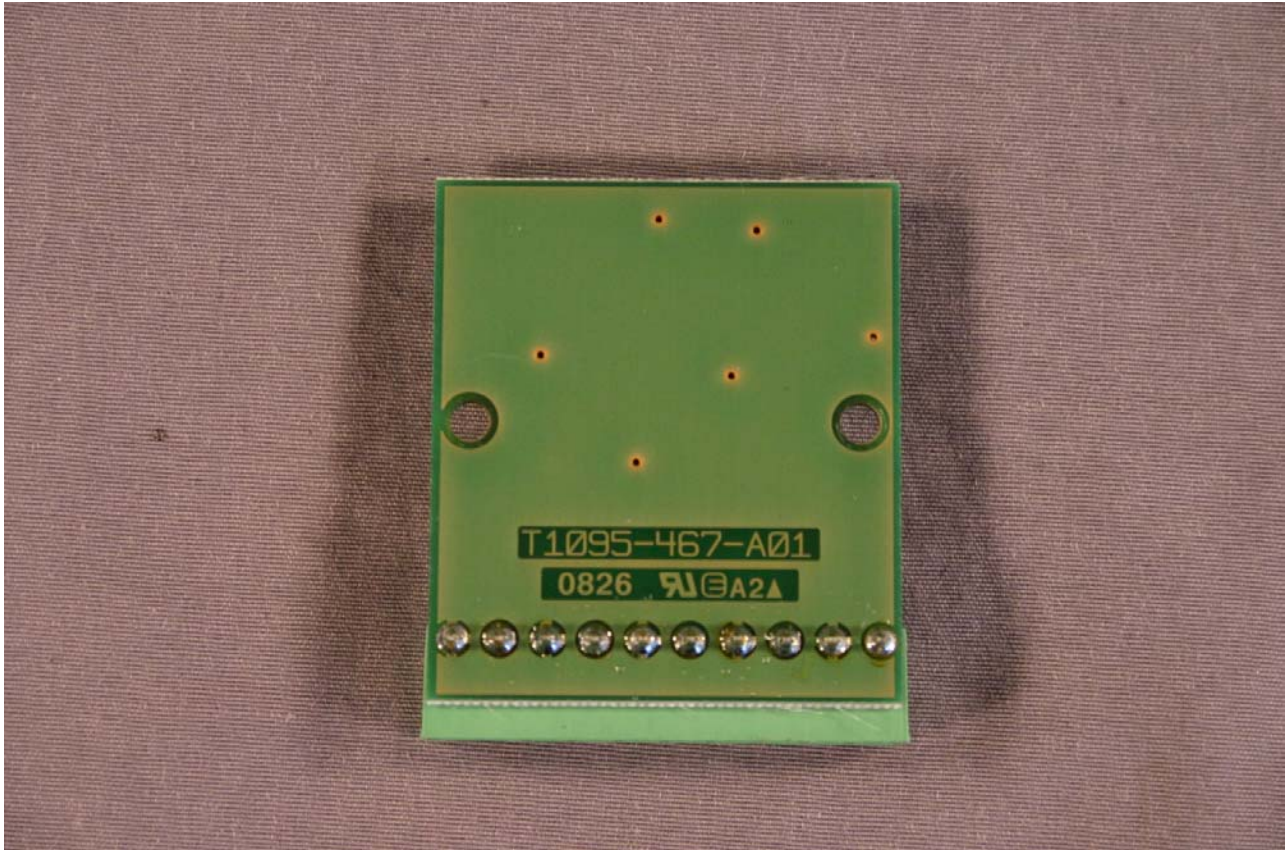


1.13 Power supply

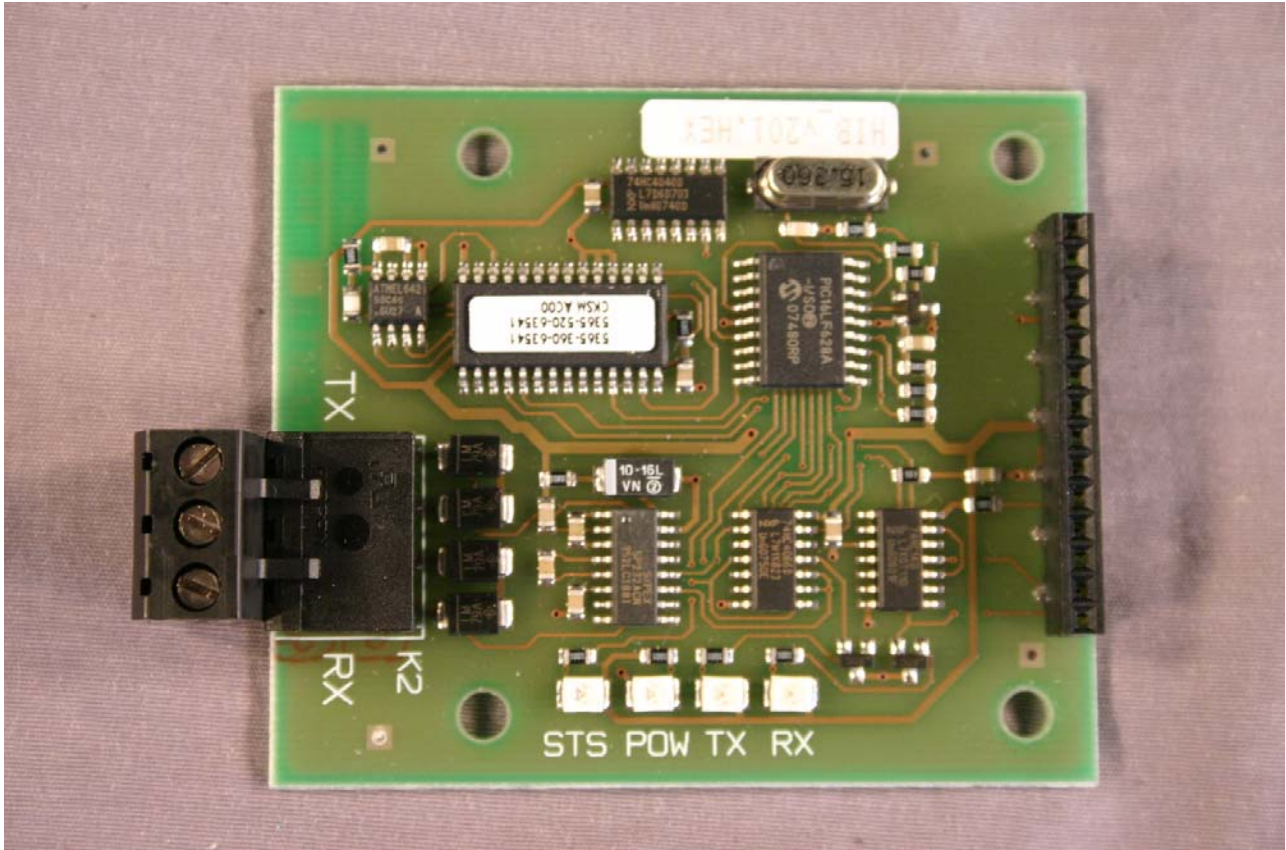




1.14 Power supply rear

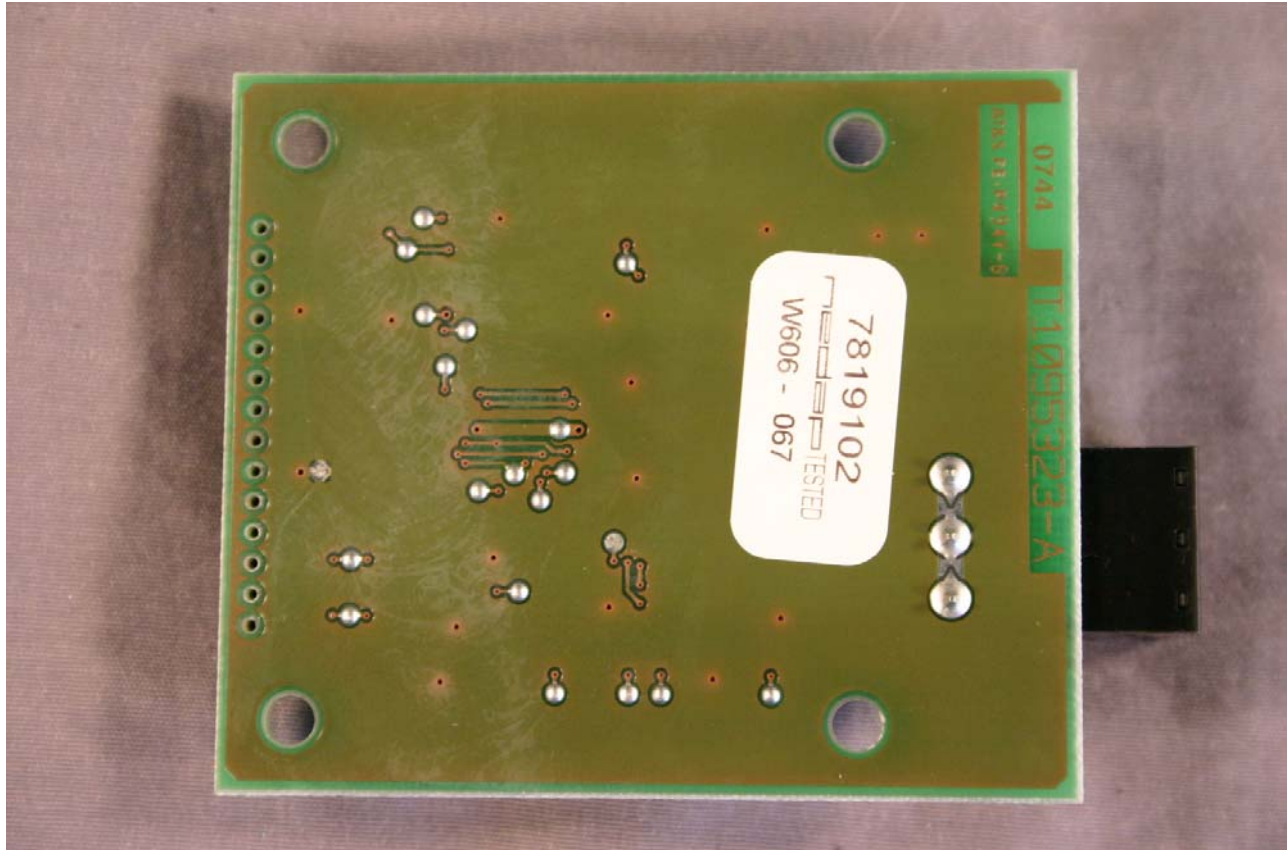


1.15 RS232 board



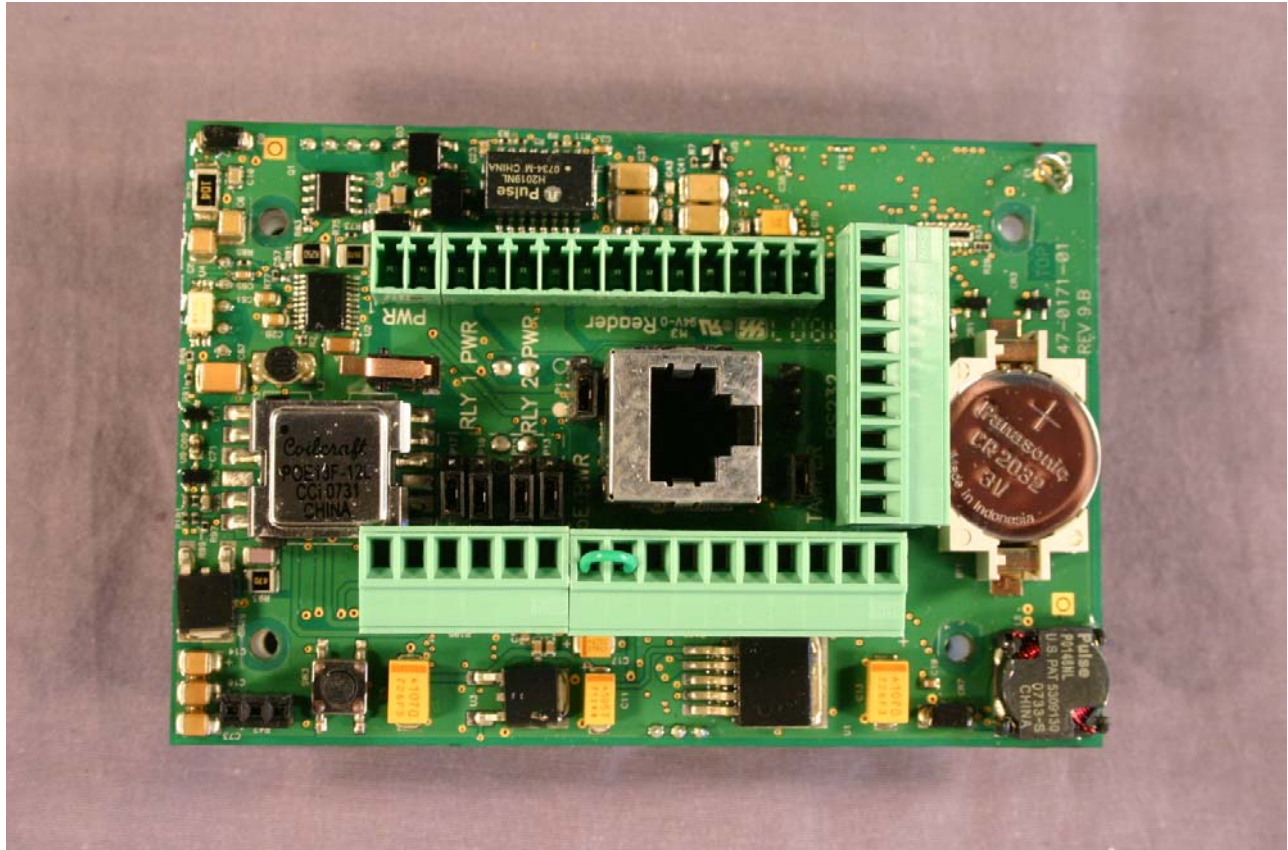


1.16 RS232 Board rear



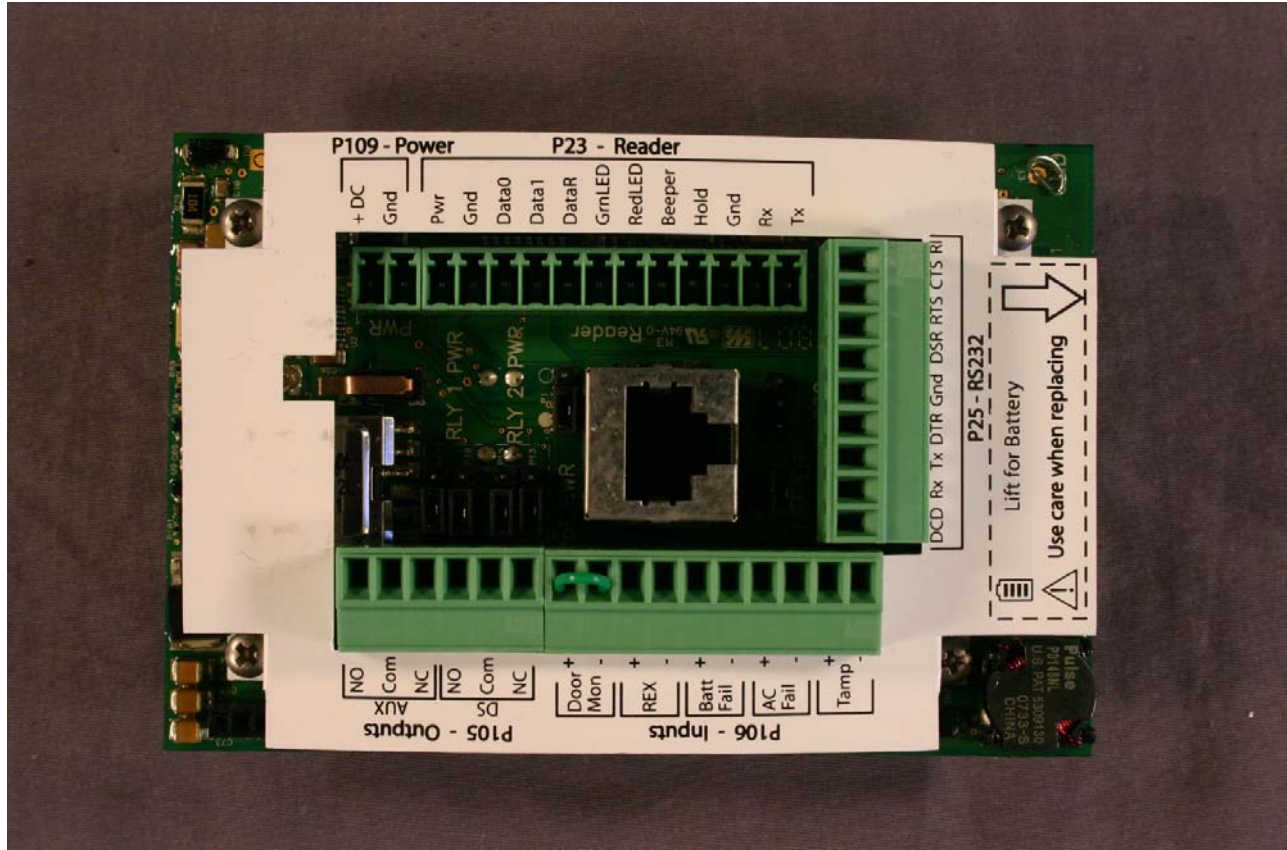


1.17 Print Upper Board EdgePlus SoloES400 without Label.



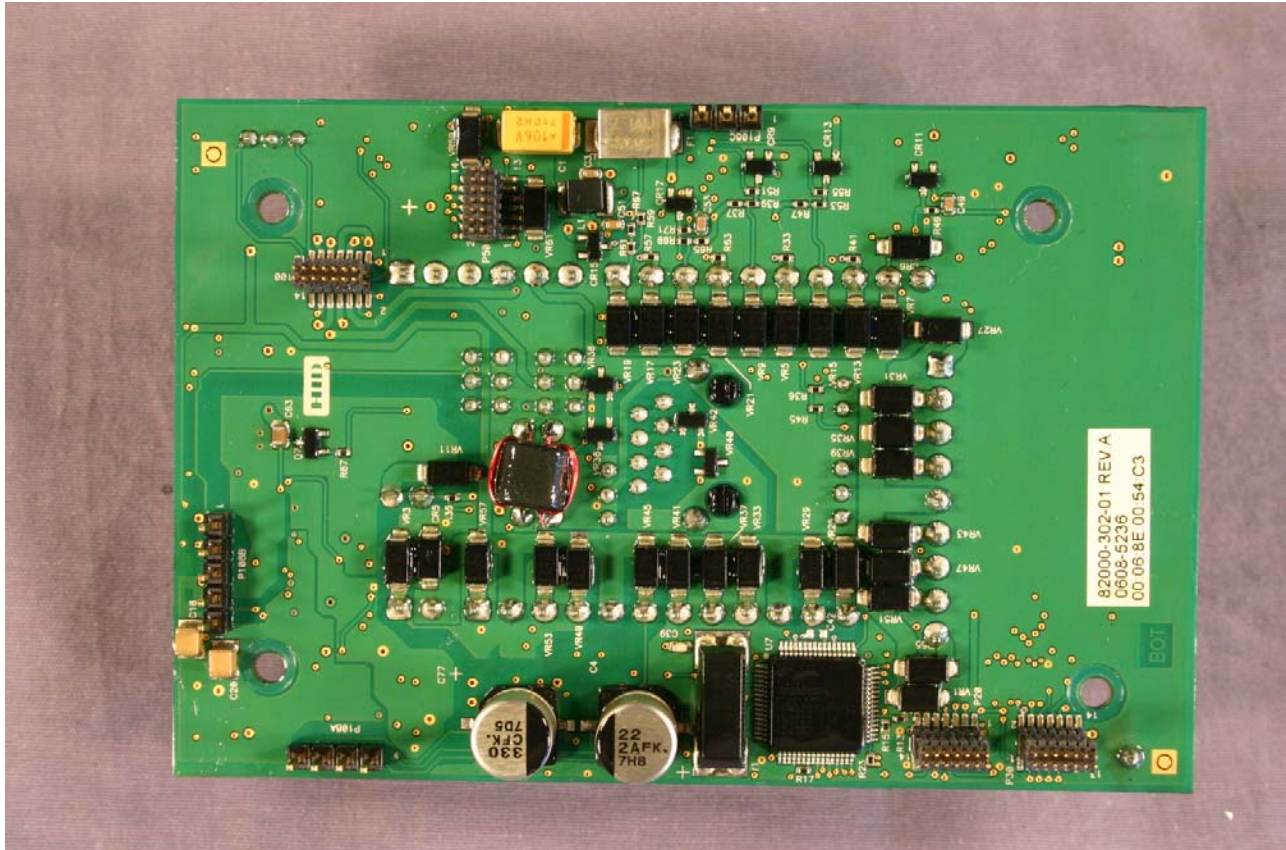


1.18 Print Upper Board EdgePlus SoloES400 with Label.



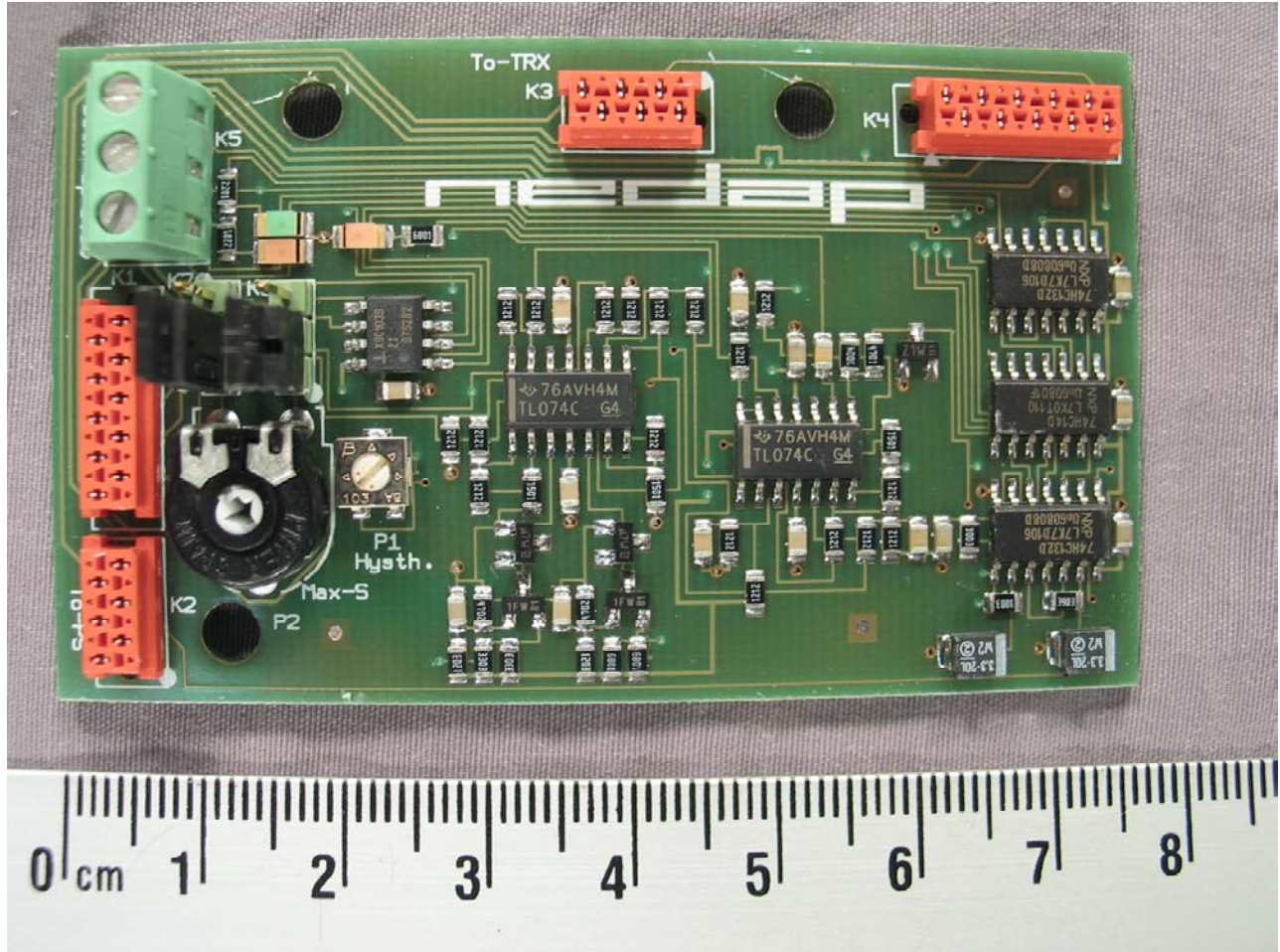


1.19 Print Upper Board EdgePlus SoloES400 rear.



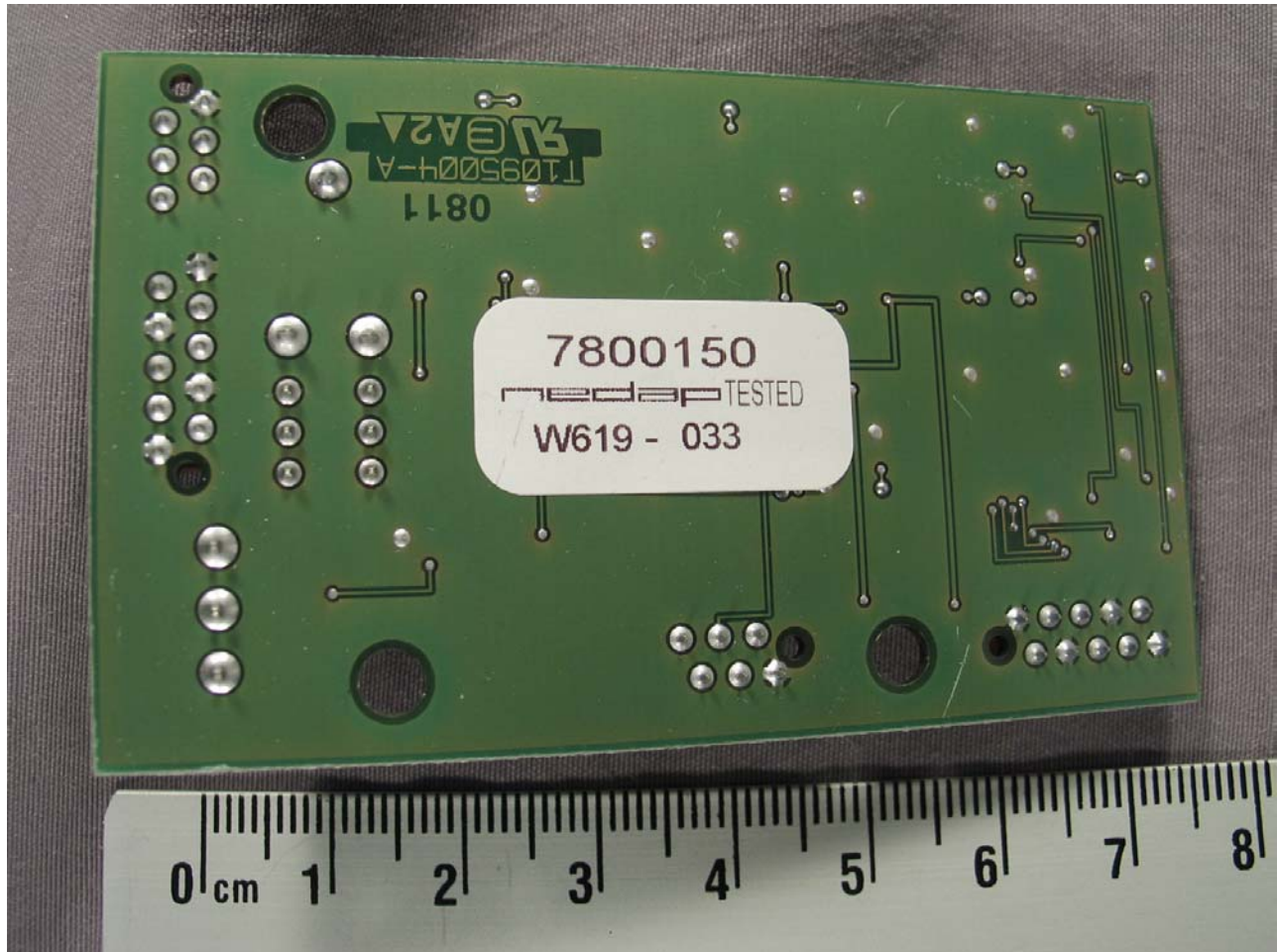


1.20 Print SAM S.U.B. squelch (upper side)



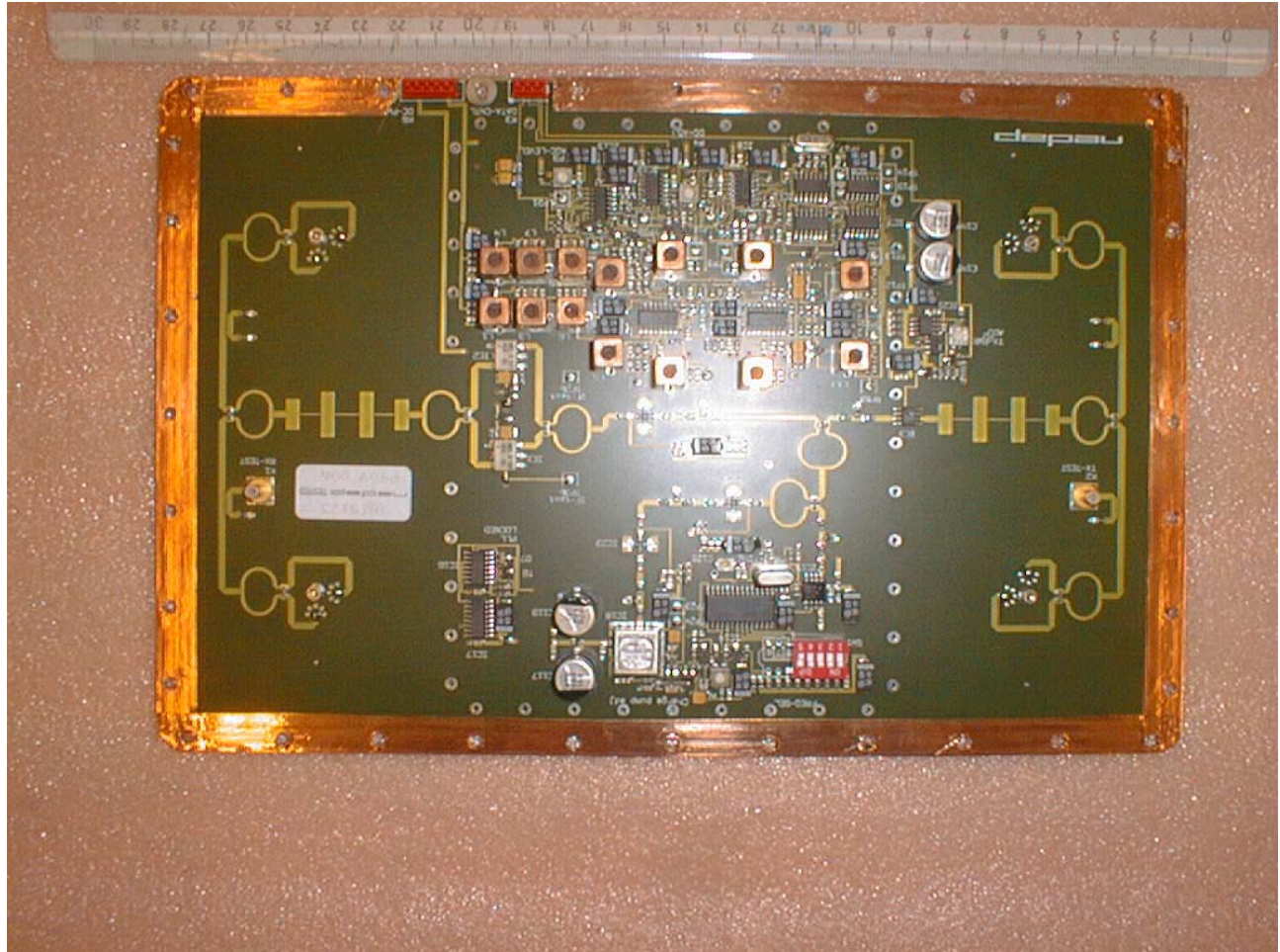


1.21 Print SAM S.U.B. squelch (rear side)





1.22 Antenna board top side





1.23 Antenna board rear side

