

**PHOTOGRAPHS OF THE INTERIOR OF A 2.4 GHZ  
MICROWAVE ID SYSTEM, BRAND NEDAP,  
MODEL TRANSIT EDGE**

FCC listed : 90828  
Industry Canada : IC3501A  
VCCI Registered : R-1518, C-1598  
R&TTE, LVD, EMC Notified Body : 1856

**TÜV Rheinland EPS B.V.**  
**P.O. Box 15**  
**9822 ZG Niekerk (NL)**  
**Smidshornerweg 18**  
**9822 TL Niekerk (NL)**

Telephone: +31 594 505005  
Telefax: +31 594 504804

Internet: [www.tuv-eps.com](http://www.tuv-eps.com)  
E-mail: [info@tuv-eps.com](mailto:info@tuv-eps.com)



**Description of test item**

Test item : 2.4 GHz Microwave ID system (Field disturbance sensor)  
Manufacturer : N.V. Nederlandsche Apparatenfabriek "Nedap"  
Brand : Nedap  
Model(s) : TRANSIT EDGE  
Serial number(s) : n.a.  
Revision : n.a.  
Receipt date : July 16, 2008

**Applicant information**

Applicant's representative : Mr. J.A.M. Hulshof  
Company : N.V. Nederlandsche Apparatenfabriek "Nedap"  
Address : Parallelweg 2  
Postal code : 7141 DC  
City : Groenlo  
Country : The Netherlands  
Telephone number : +31 544 471 162  
Telefax number : +31 544 463 475



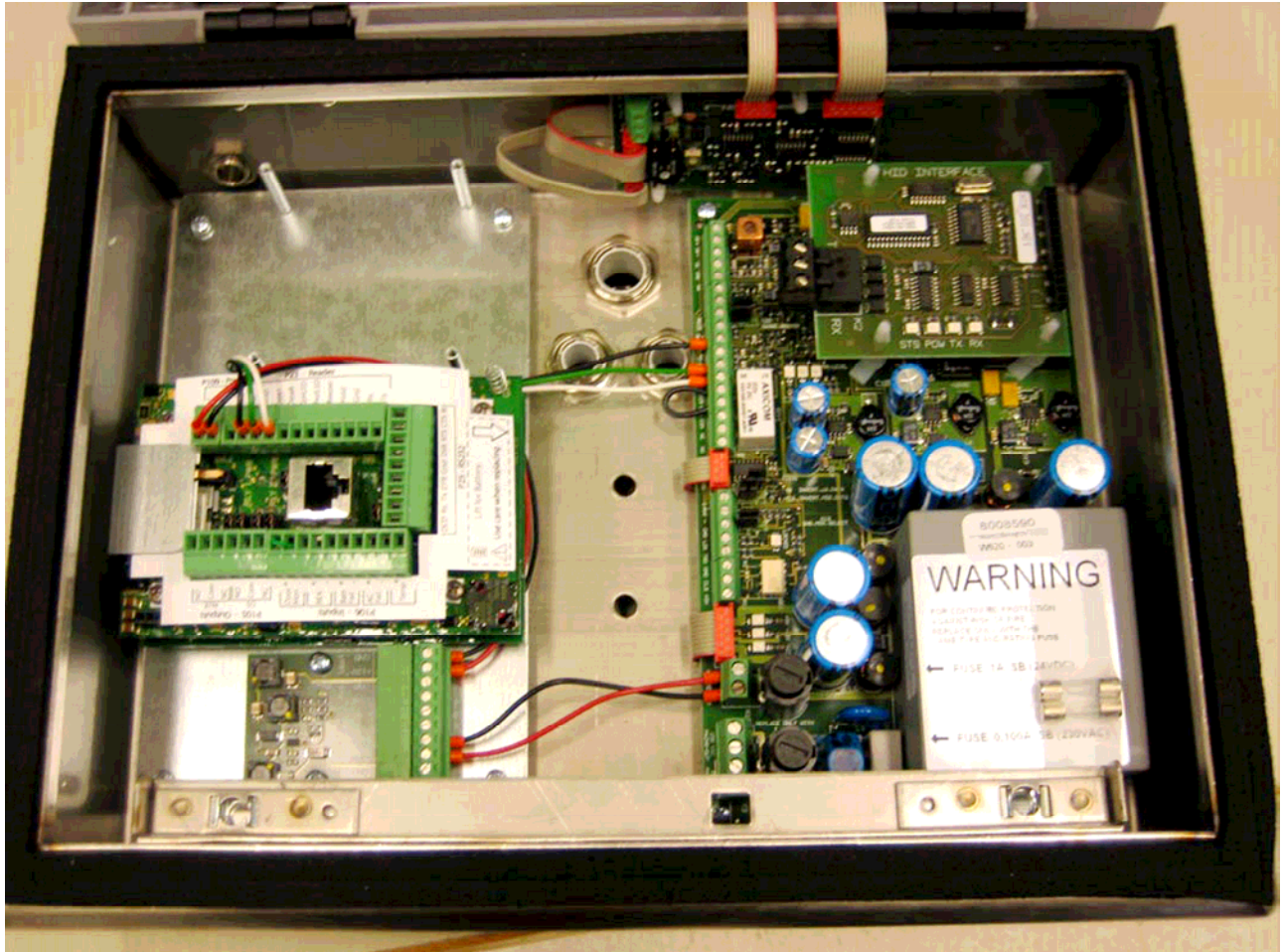
## **Table of contents**

1.1	OVERVIEW.....	4
1.2	OPENED EUT OVERVIEW.....	5
1.3	PRINT LOWER BOARD EDGEPLUS SOLO ES400.....	6
1.4	PRINT LOWER BOARD EDGEPLUS SOLO ES400-REAR.....	7
1.5	TRANSIT FRONT WITHOUT RS232 BOARD.....	8
1.6	TRANSIT FRONT WITH RS232 BOARD.....	9
1.7	TRANSIT REAR.....	10
1.8	POWER SUPPLY.....	11
1.9	POWER SUPPLY REAR.....	12
1.10	RS232 BOARD.....	13
1.11	RS232 BOARD REAR.....	14
1.12	PRINT UPPER BOARD EDGEPLUS SOLOES400 WITHOUT LABEL.....	15
1.13	PRINT UPPER BOARD EDGEPLUS SOLOES400 WITH LABEL.....	16
1.14	PRINT UPPER BOARD EDGEPLUS SOLOES400 REAR.....	17
1.15	PRINT SAM S.U.B. SQUELCH (UPPER SIDE).....	18
1.16	PRINT SAM S.U.B. SQUELCH (REAR SIDE).....	19
1.17	ANTENNA BOARD TOP SIDE.....	20
1.18	ANTENNA BOARD REAR SIDE.....	21

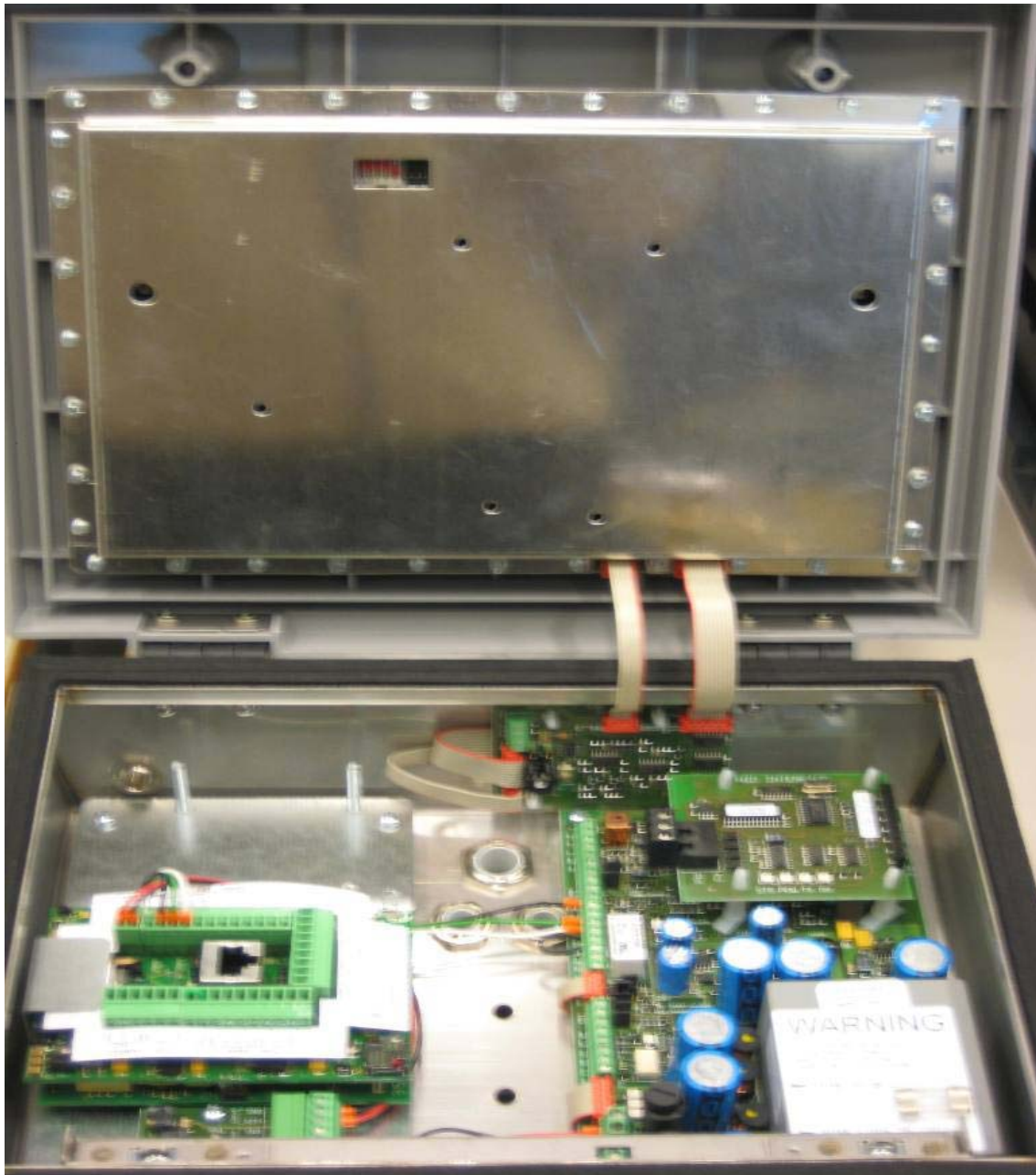


Photographs of the equipment.

### 1.1 Overview.

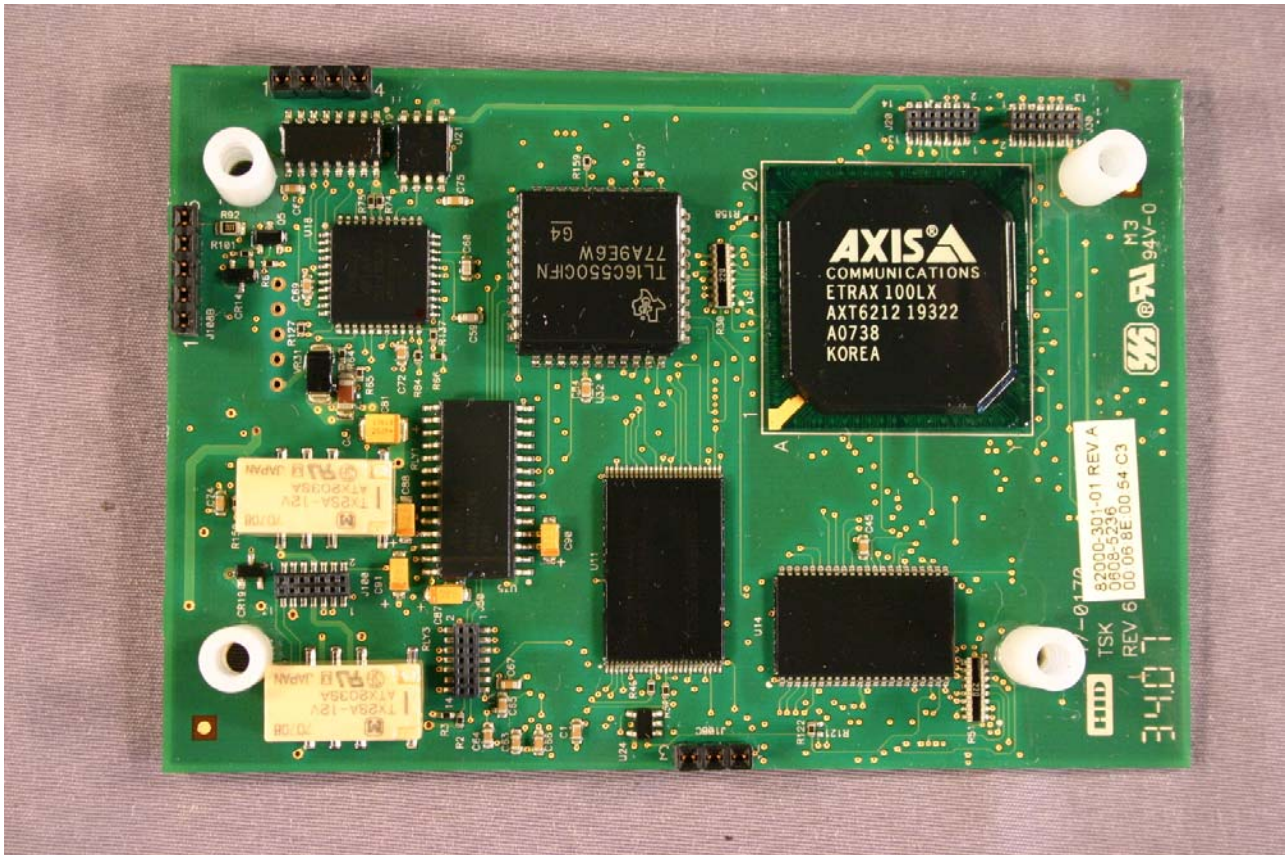


## 1.2 Opened EUT overview



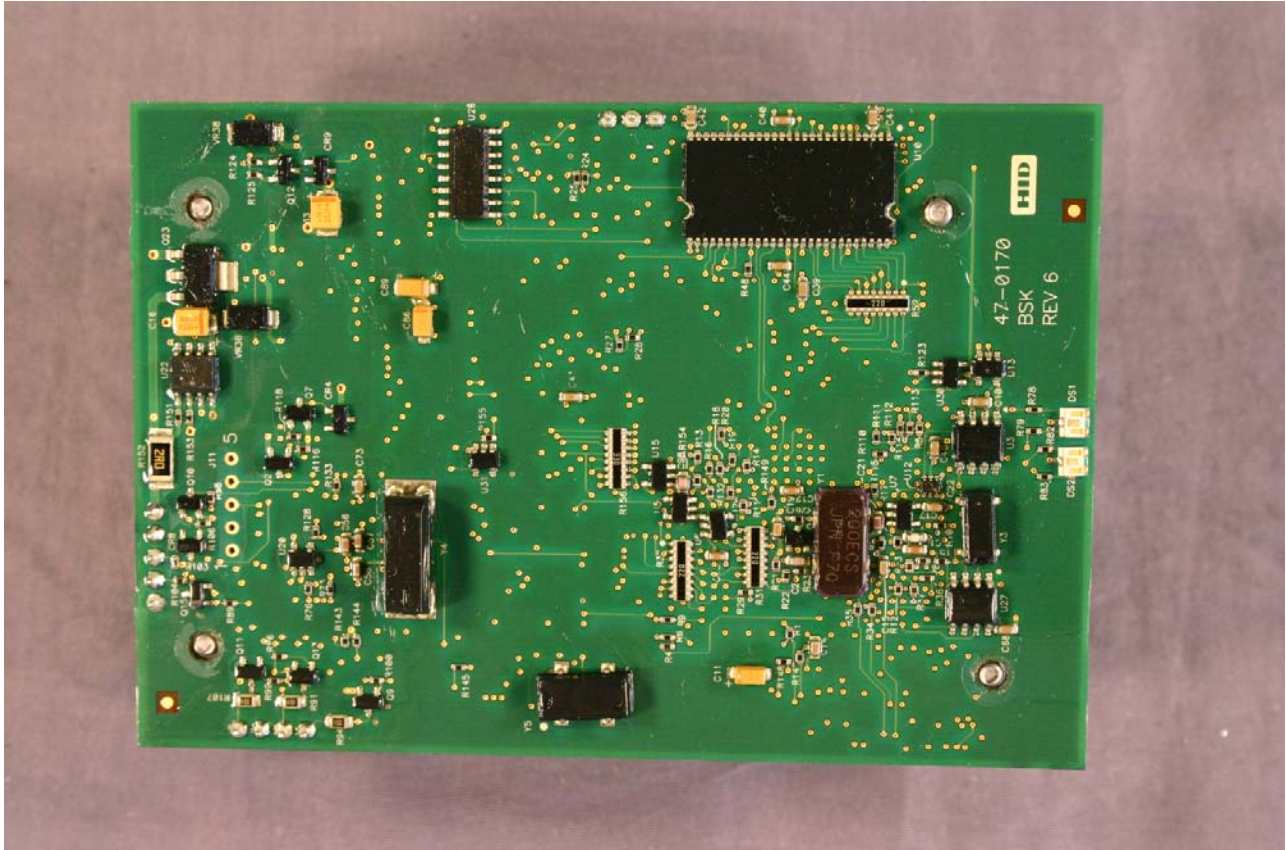


### 1.3 Print Lower Board EdgePlus Solo ES400





#### 1.4 Print Lower Board EdgePlus Solo ES400-Rear





## 1.5 Transit Front without RS232 Board





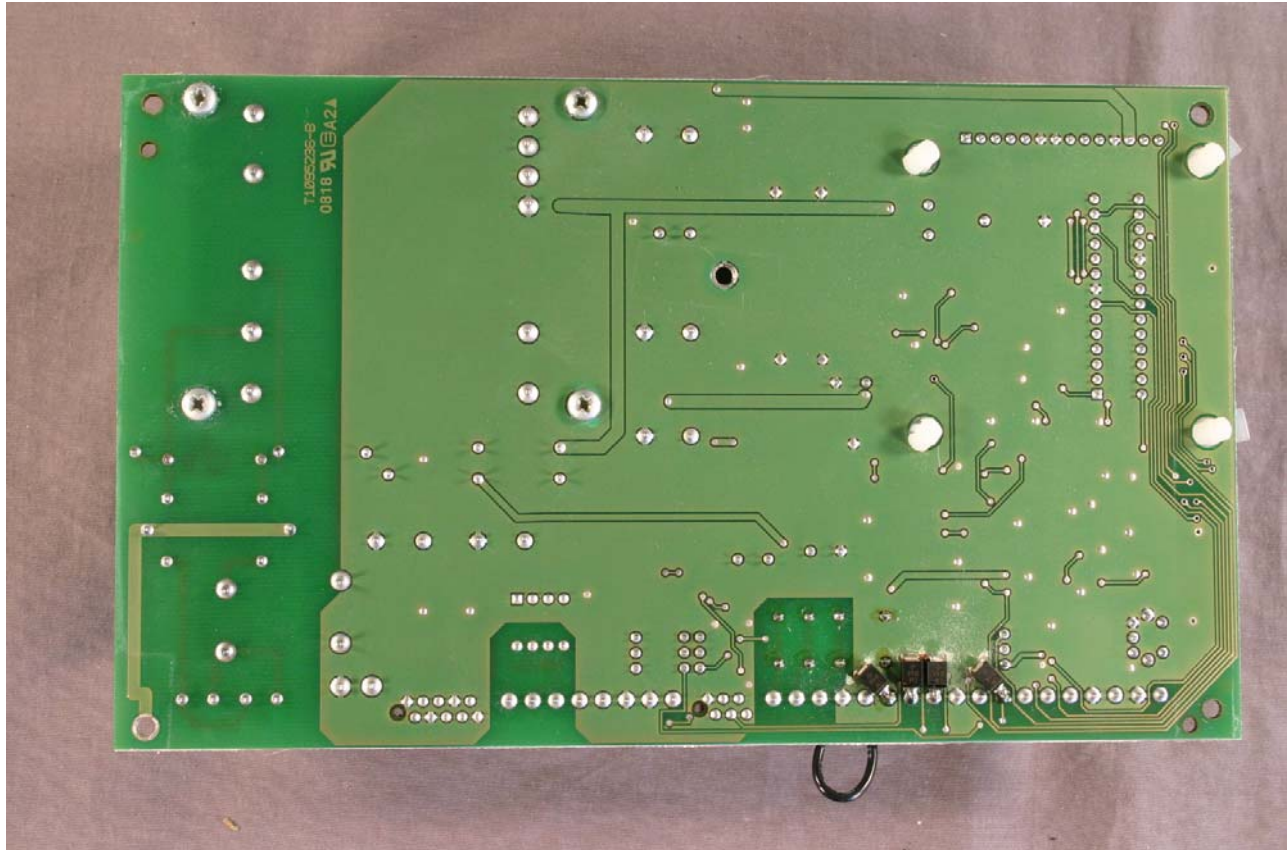


## 1.6 TransIT Front with RS232 Board

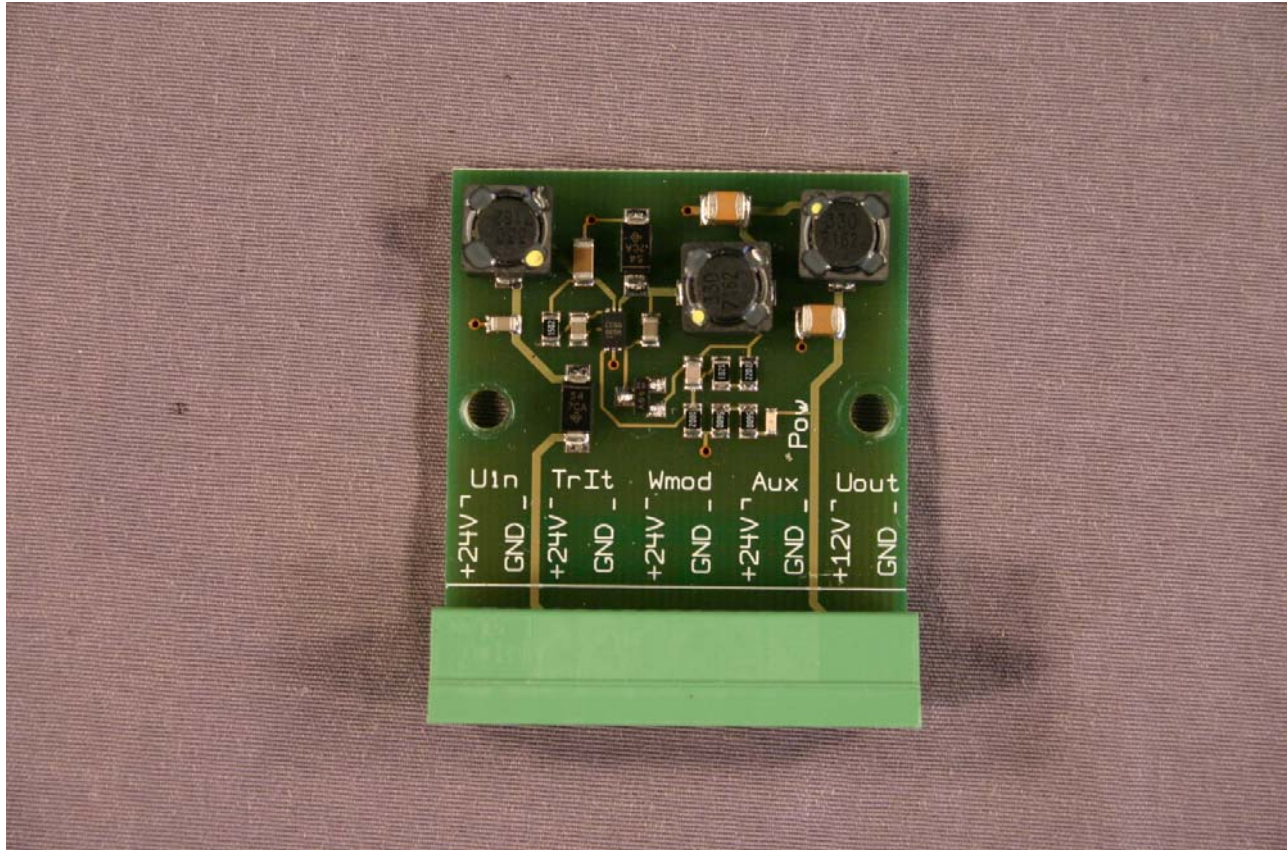




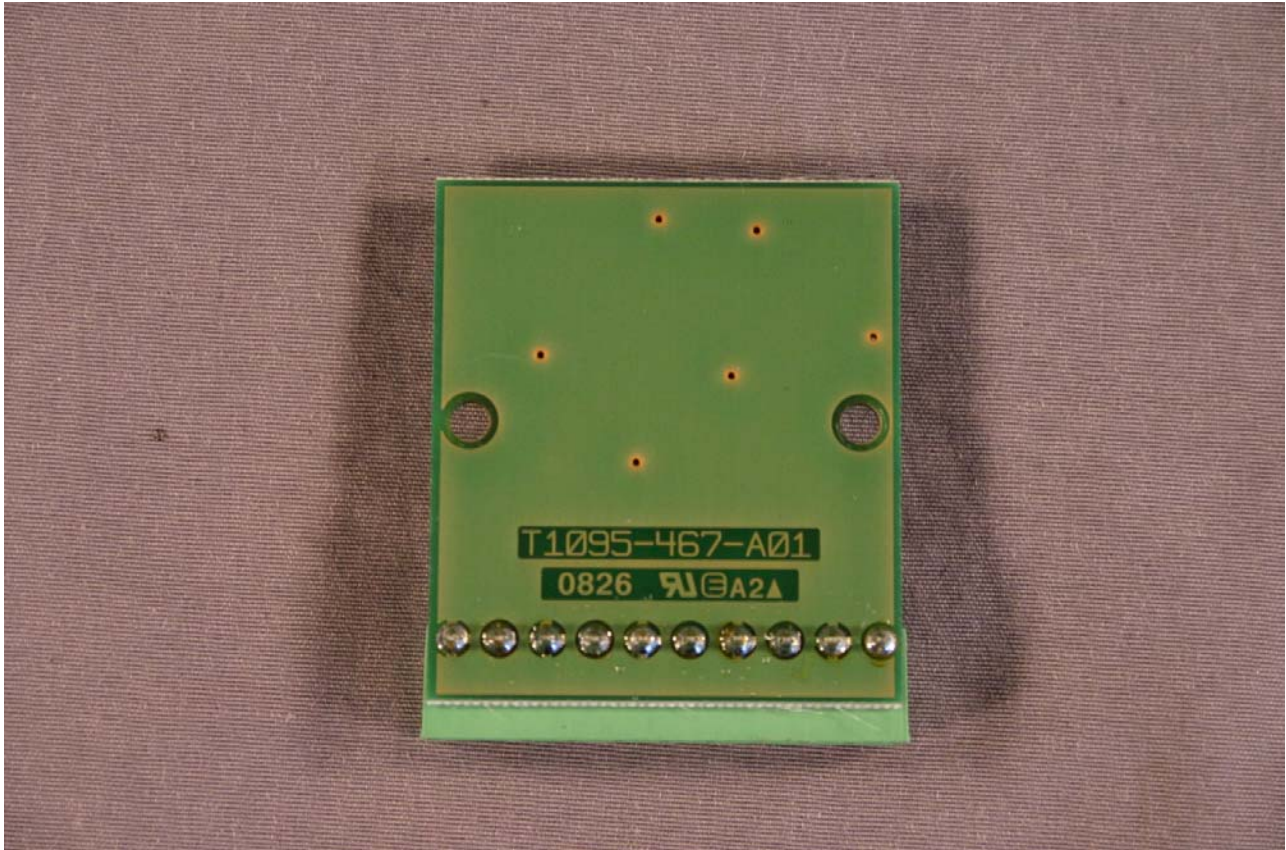
## 1.7 TransIT Rear



## 1.8 Power supply

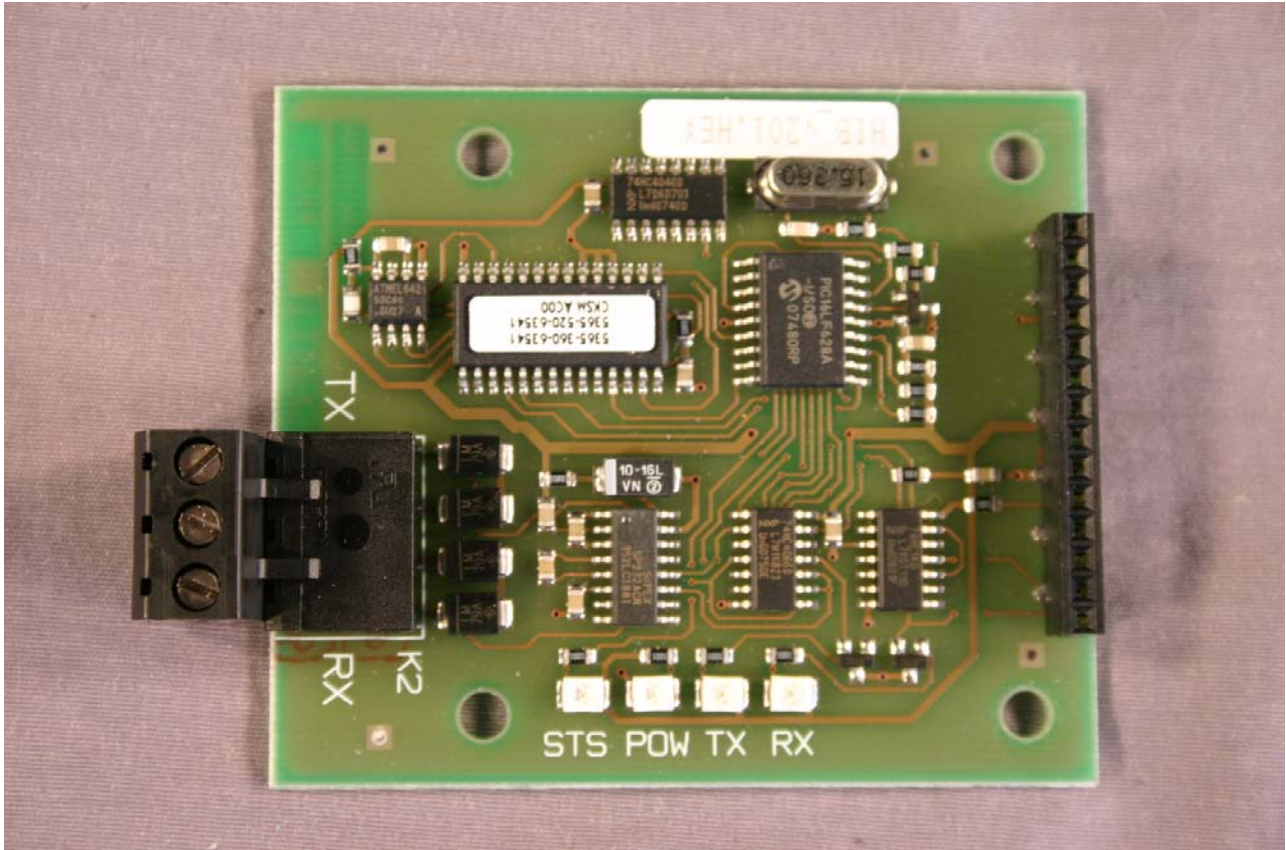


## 1.9 Power supply rear



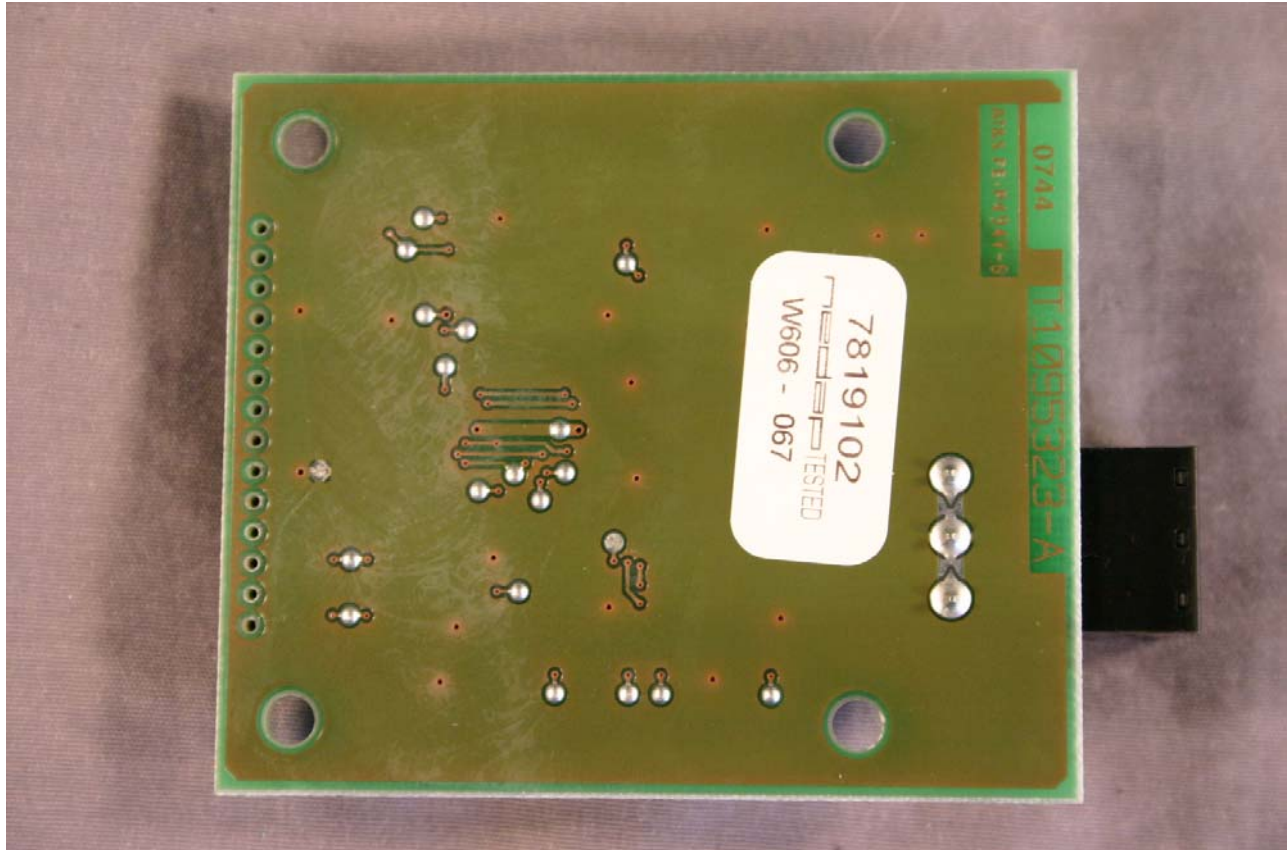


### 1.10 RS232 board



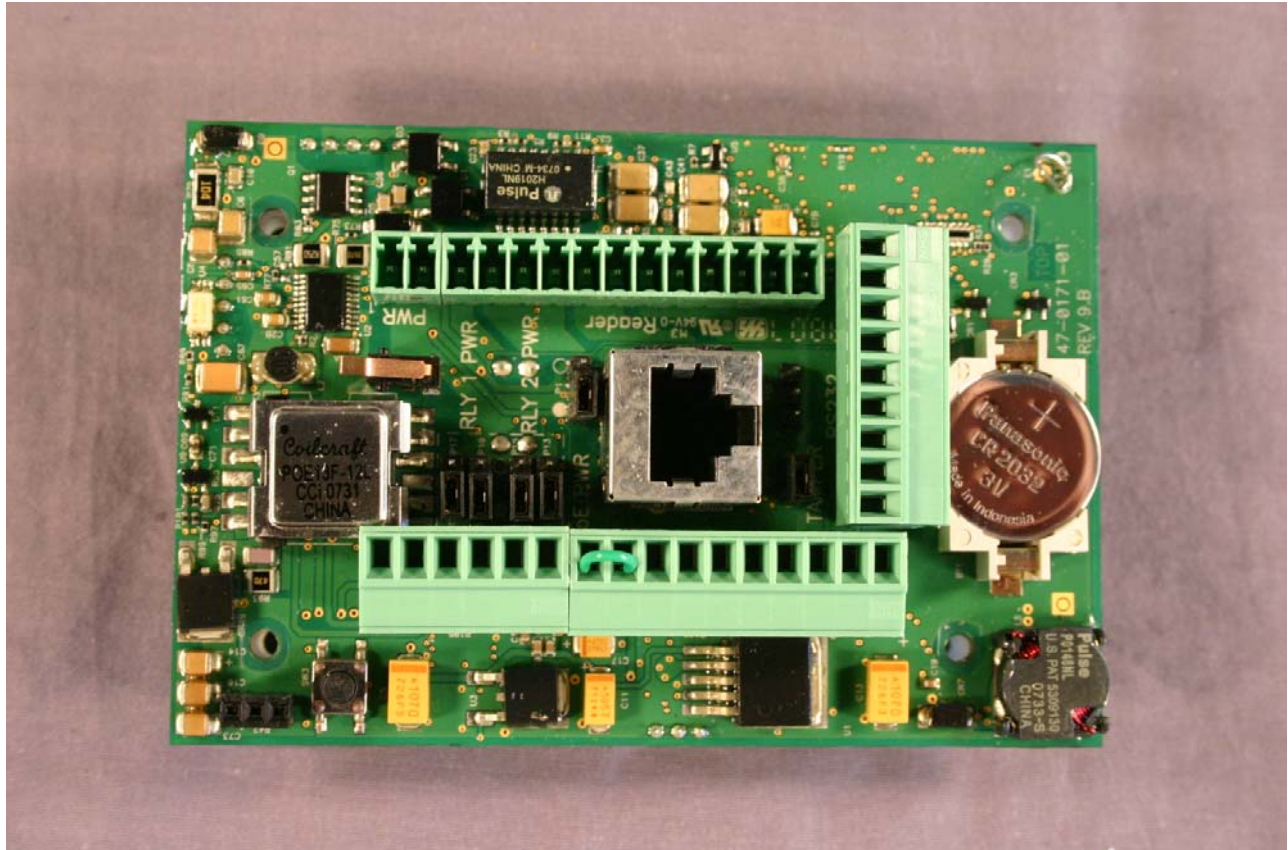


### 1.11 RS232 Board rear



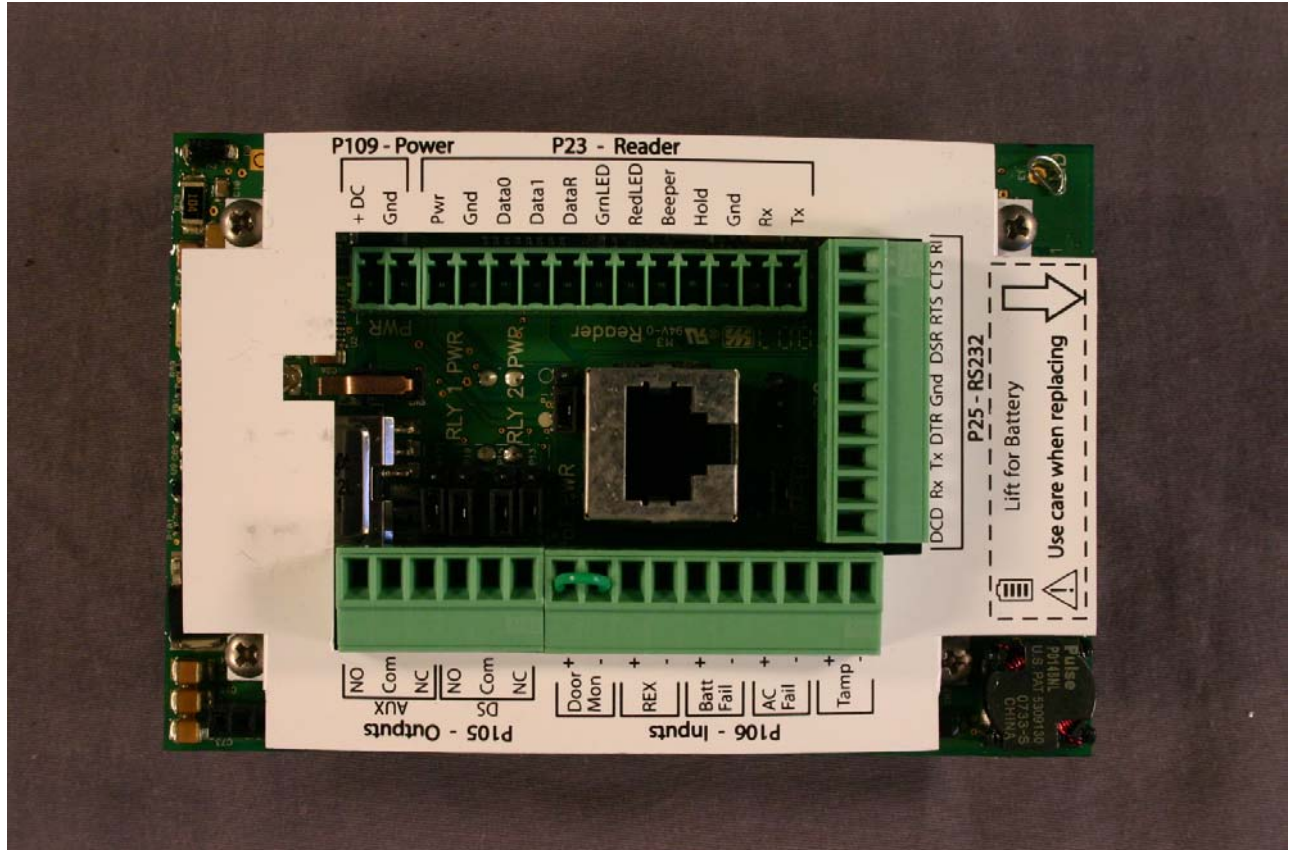


### 1.12 Print Upper Board EdgePlus SoloES400 without Label.





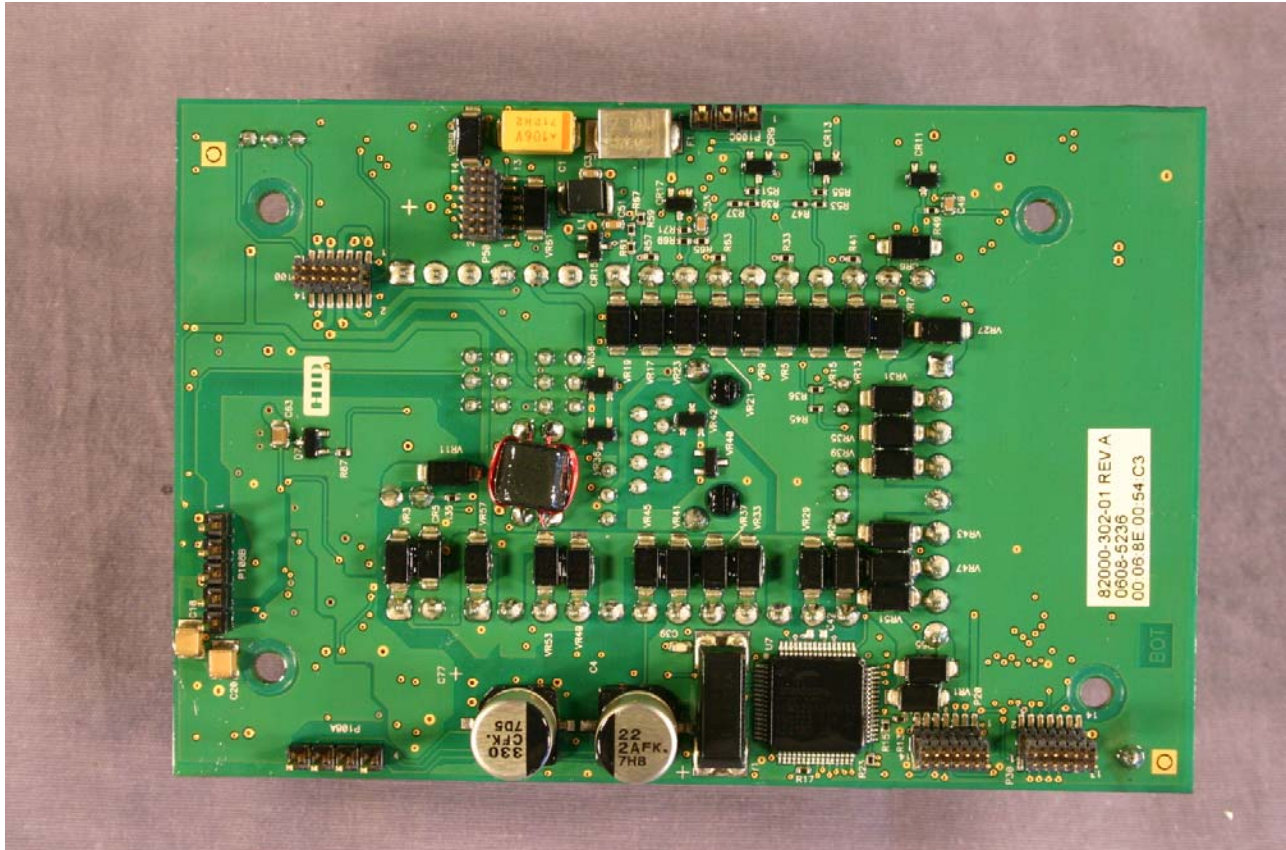
### 1.13 Print Upper Board EdgePlus SoloES400 with Label.





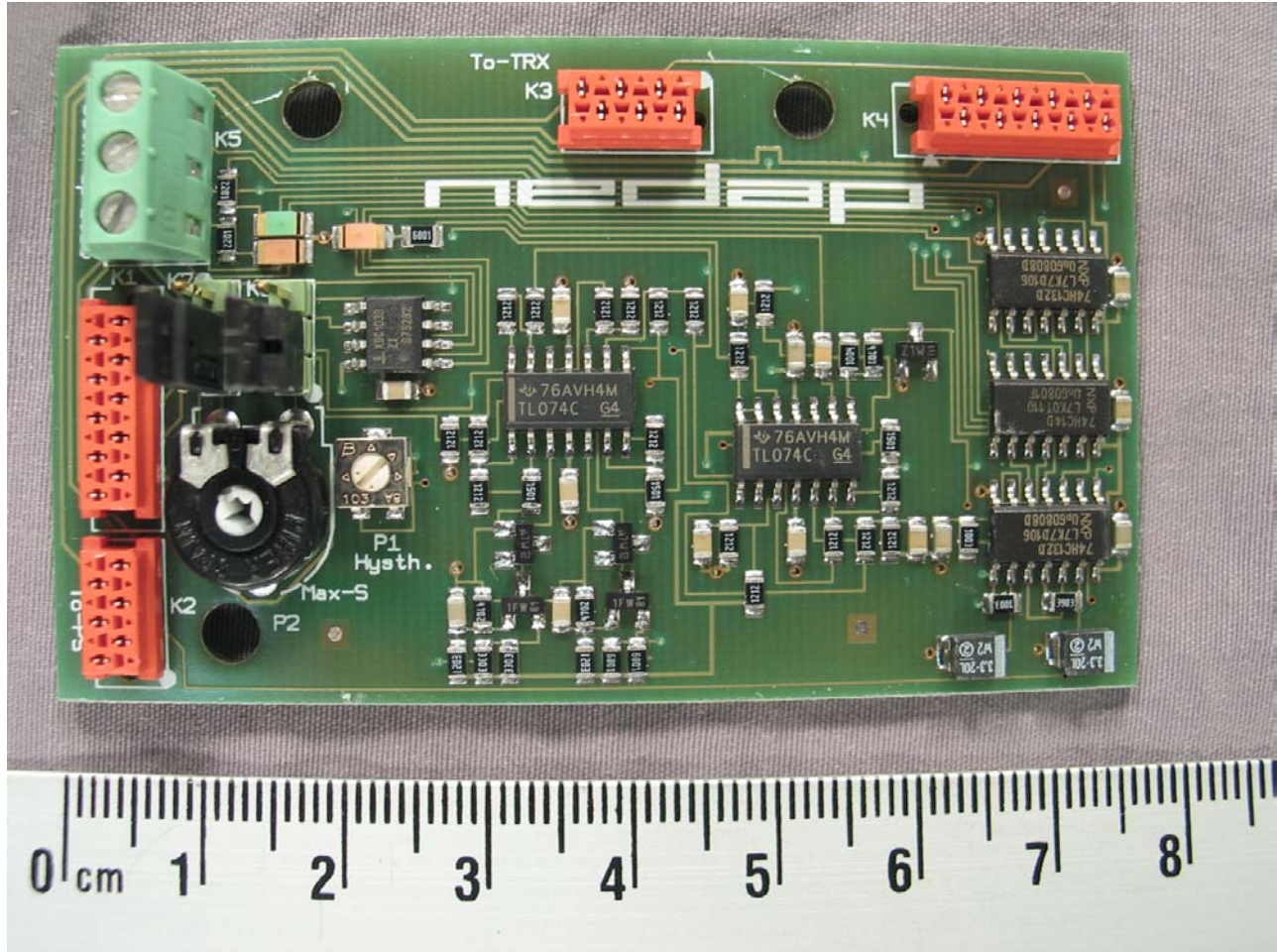


### 1.14 Print Upper Board EdgePlus SoloES400 rear.



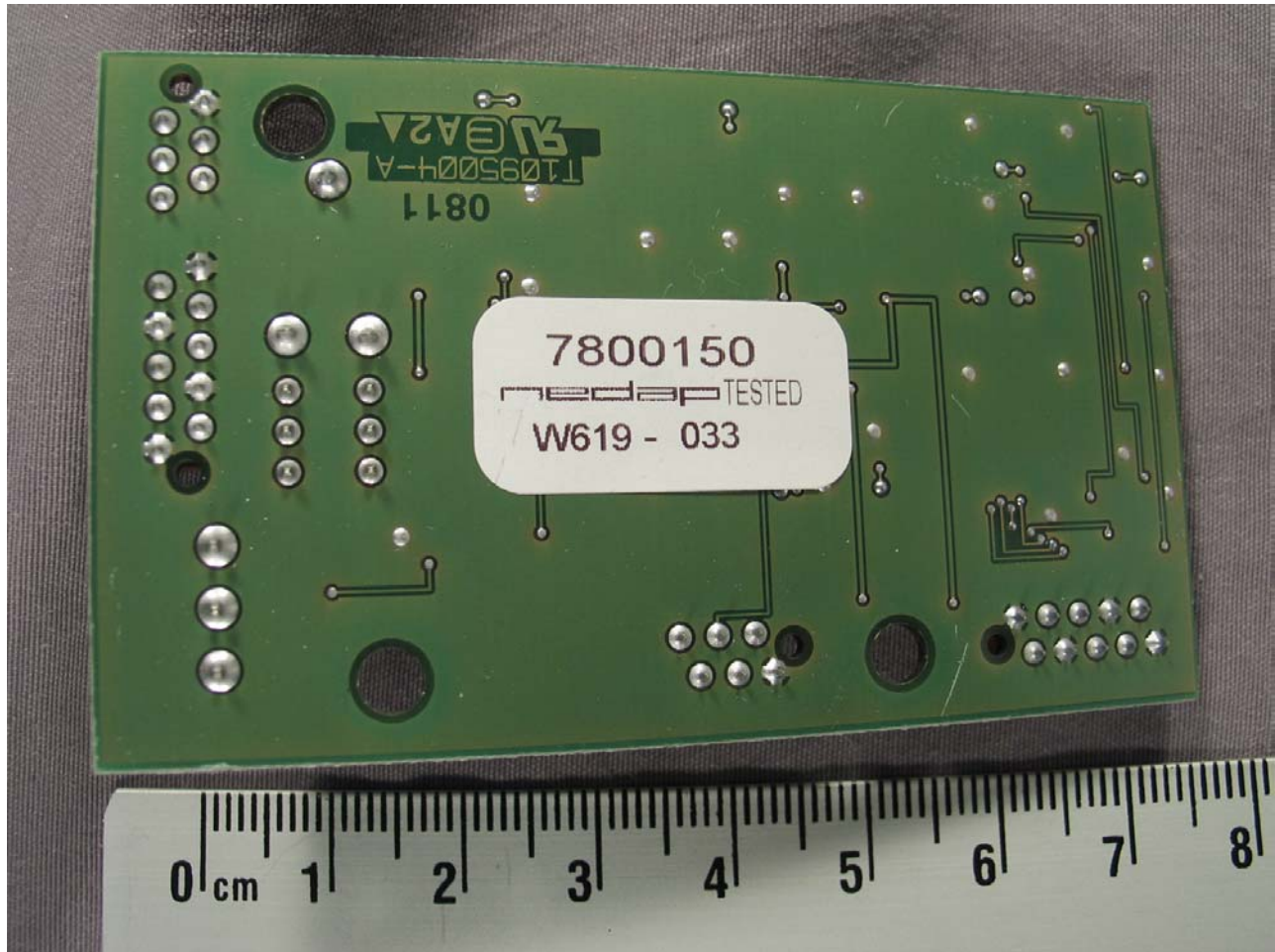


### 1.15 Print SAM S.U.B. squelch (upper side)

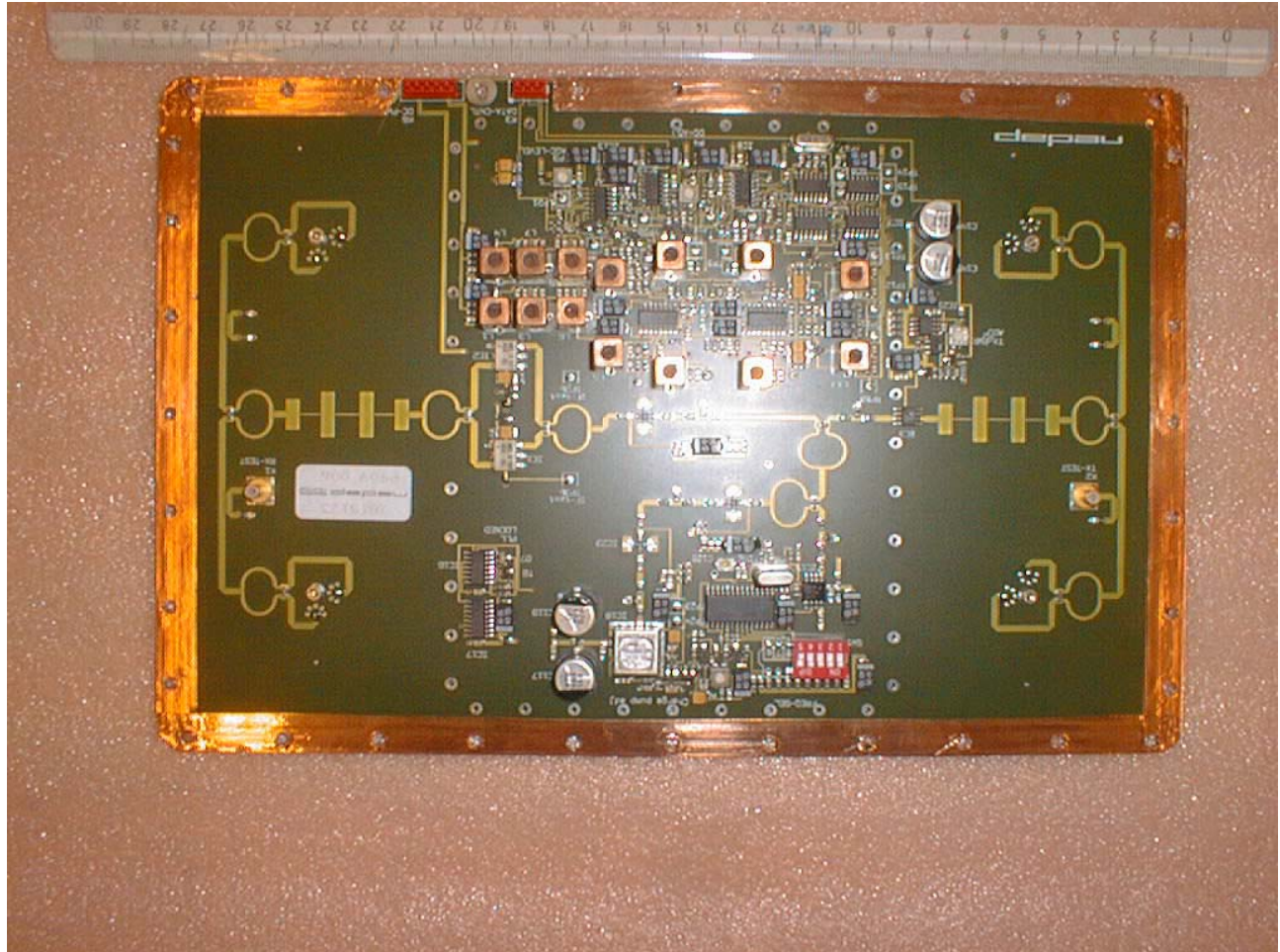




1.16 Print SAM S.U.B. squelch (rear side)



### 1.17 Antenna board top side





### 1.18 Antenna board rear side

