

Photo report internal components

Anti-Pilferage System operating in the bands 125kHz and 7-8MHz

Brand: Nedap

Model: ASSY T325R RF+MD

Author	RH
Date	16 September 2017
Status	final

N.V. Nederlandsche Apparatenfabriek "Nedap"

Parallelweg 2
7141 DC Groenlo
The Netherlands

Description of EUT

Description of EUT	Anti-Pilferage System operating in the band 7-8MHz
Manufacturer	Nedap N.V.
Brand	Nedap
Commercial name	Lumen iL33
Model	ASSY T325R RF+MD
FCC ID	CGDT325RRFMD
IC	1444A-T325RRFMD
Type of service	New Application

Applicant Information

Applicant's representative	Mr. Reinold Hubers
Company	N.V. Nederlandsche Apparatenfabriek "Nedap"
Address	Parallelweg 2
Postal code	7141 DC
City	Groenlo
PO Box	6
Postal code	7140 AA
City	Groenlo
Country	The Netherlands
Telephone number	+31 (0) 544 471111
Telefax number	+31 (0) 544 463475

0. CONTENTS

1. Overview T325R RF+MD _____	4
2. Internal photo overview _____	5
2.1. Front view _____	5
2.2. Back view _____	6
2.3. LED/buzzer and customer counter front side _____	7
2.4. LED/buzzer and customer counter back side _____	7
7	
3. Renos transmitter/receiver and controller PCB _____	8
3.1. Complete top view with metal covers _____	8
3.2. Back view with metal covers _____	8
3.3. Renos with covers removed _____	9
3.4. Renos front side PCB _____	9
3.5. Renos back side PCB _____	10
4. Antenna matching PCB _____	11
4.1. Front view _____	11
4.2. Back view _____	11
5. LED/buzzer and customer counter PCB _____	12
5.1. Front view _____	12
5.2. Back view _____	12
6. Metal detector _____	13
6.1. Total view with metal covers _____	13
6.2. Metal detector with covers removed _____	13
6.3. Metal detector front view PCB _____	14
6.4. Metal detector back view PCB _____	14

1. Overview T325R RF+MD



2. Internal photo overview

2.1. Front view



LED/buzzer PCB and customer counter

Antenna

125kHz metal detector

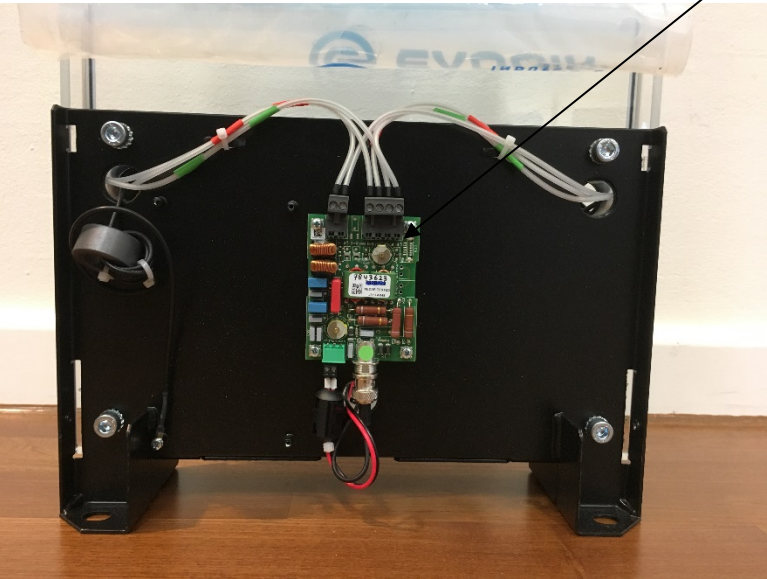
Renes 8.2MHz Transmitter/Receiver and controller PCB



2.2. Back view



Antenna matching PCB

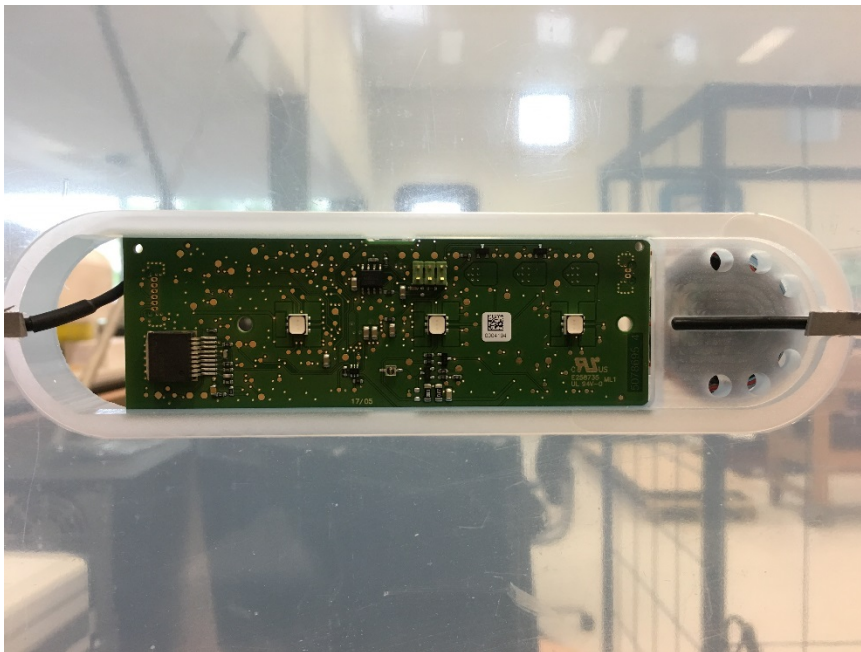


2.3. LED/buzzer and customer counter front side



Transparent white cover removed

2.4. LED/buzzer and customer counter back side



Transparent white cover removed

3. Renos transmitter/receiver and controller PCB

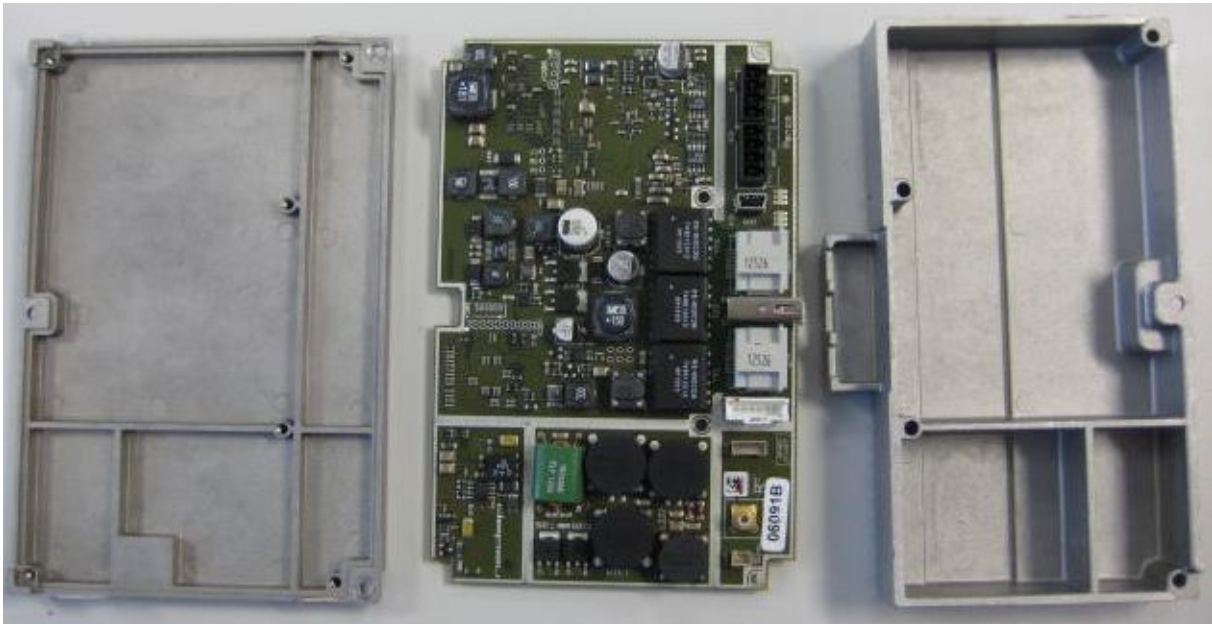
3.1. Complete top view with metal covers



3.2. Back view with metal covers



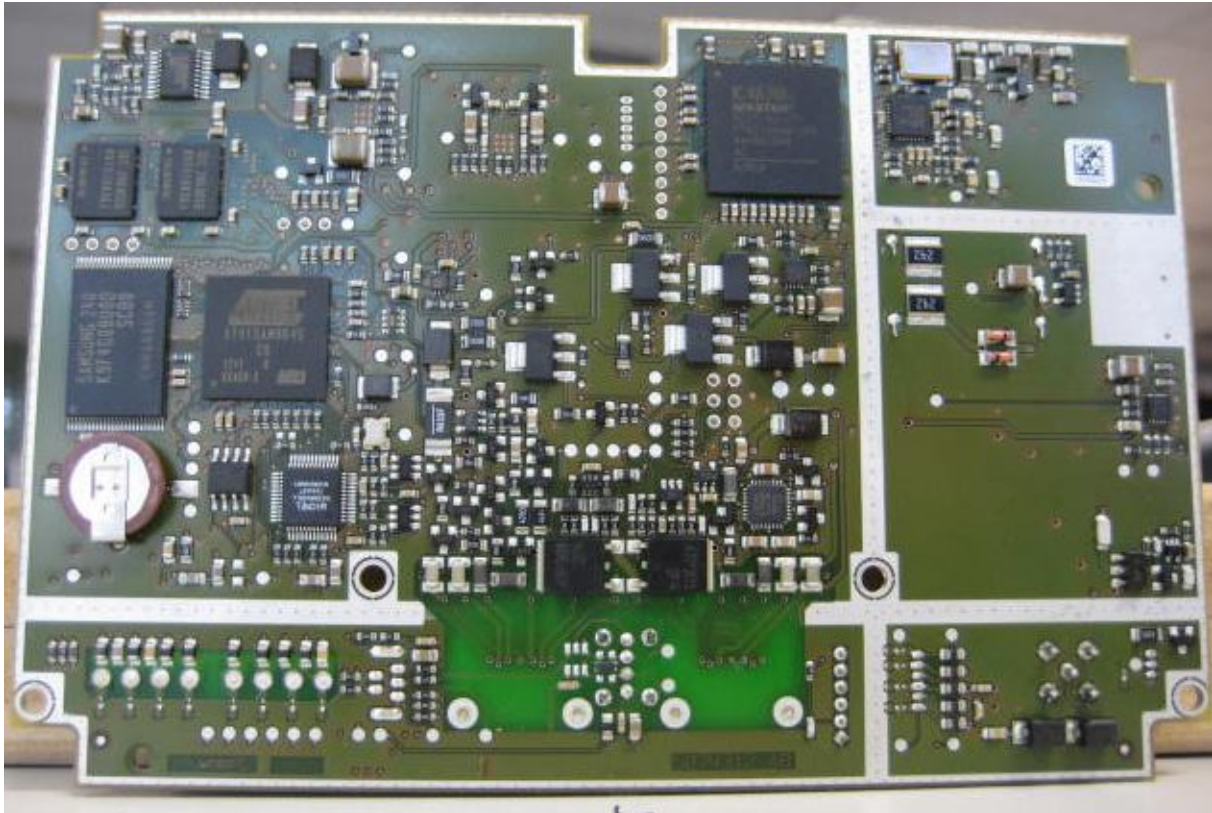
3.3. Renos with covers removed



3.4. Renos front side PCB

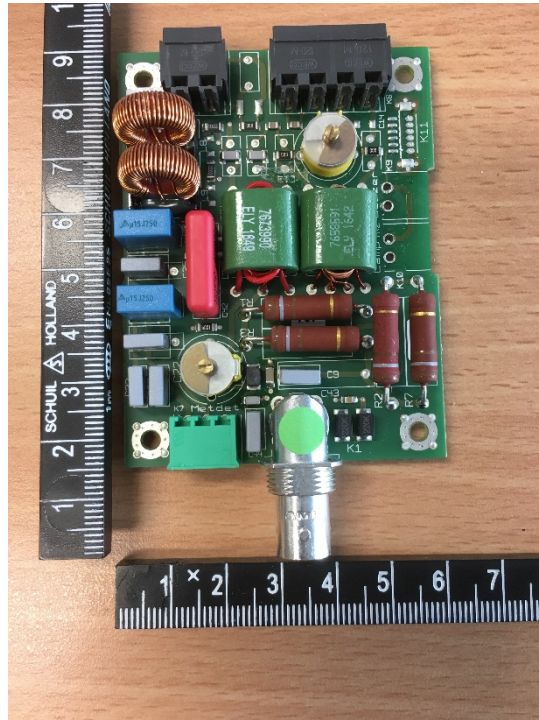


3.5. Renos back side PCB

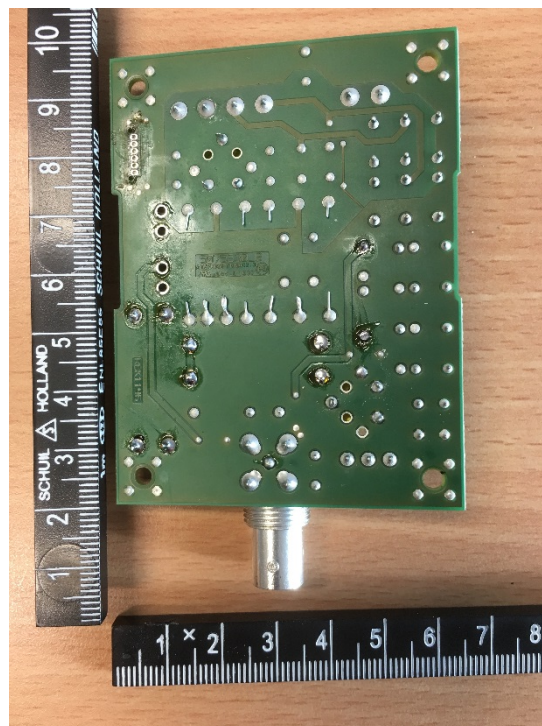


4. Antenna matching PCB

4.1. Front view

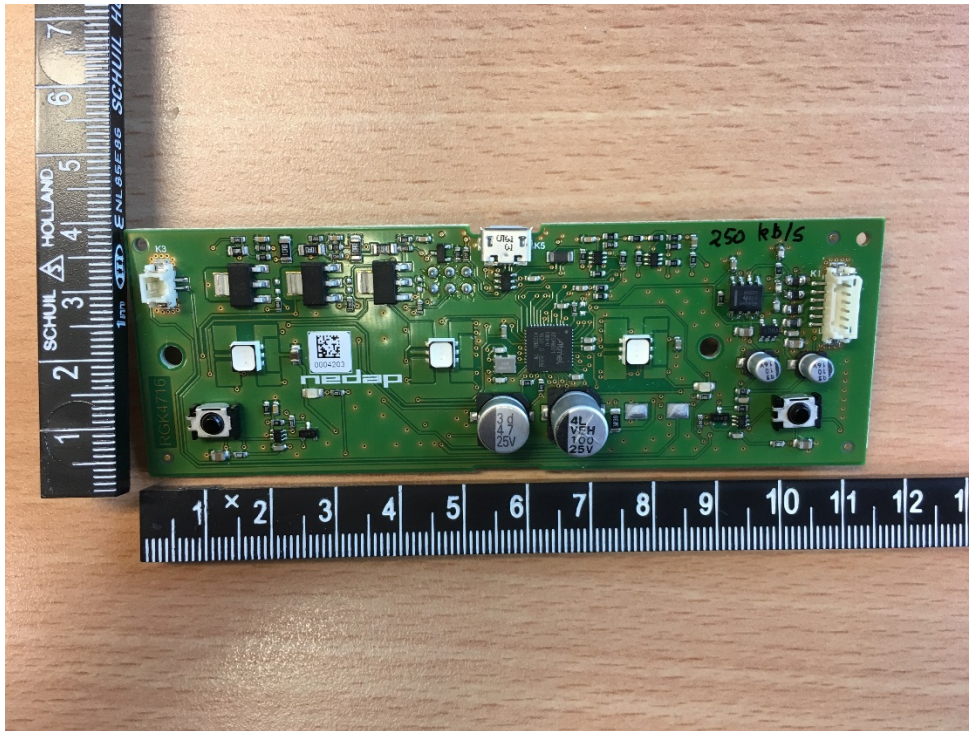


4.2. Back view

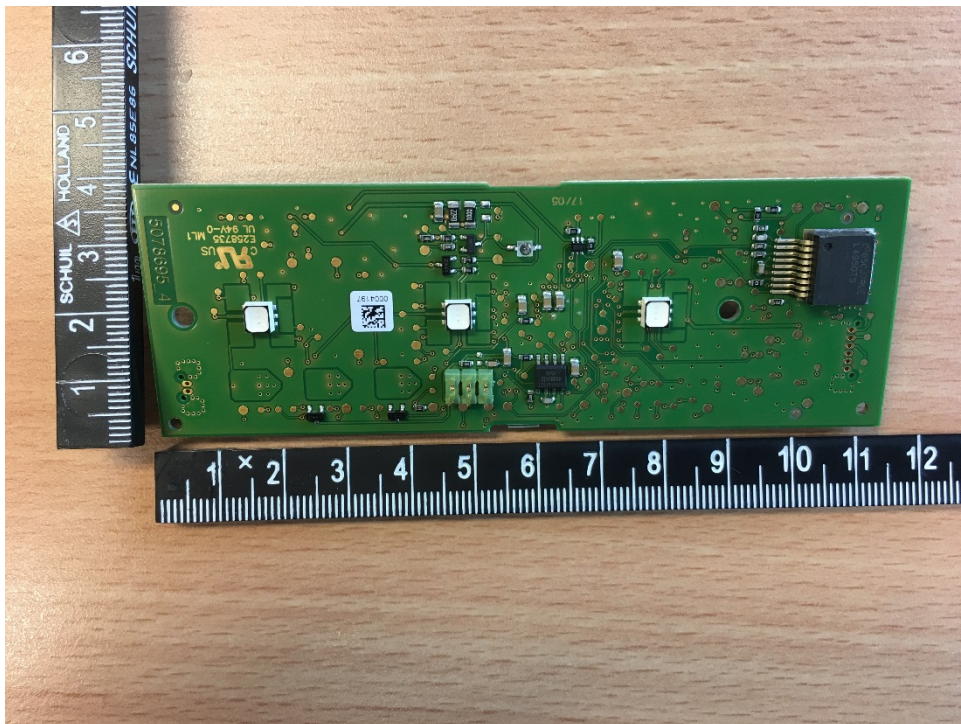


5. LED/buzzer and customer counter PCB

5.1. Front view



5.2. Back view

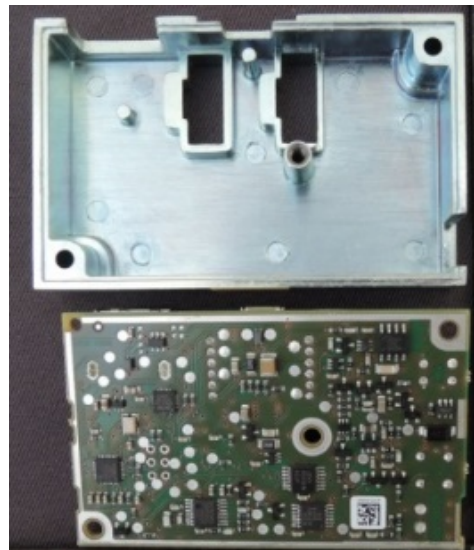
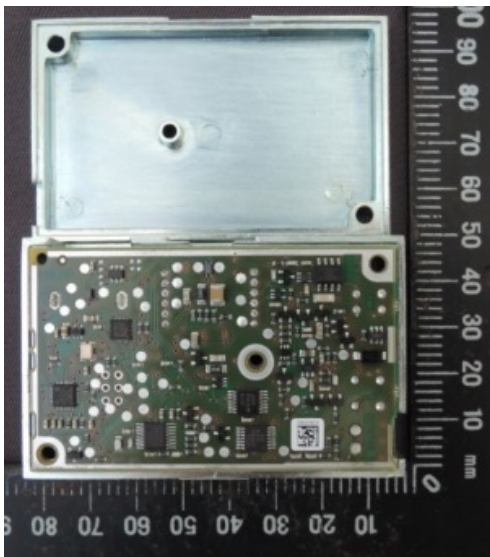


6. Metal detector

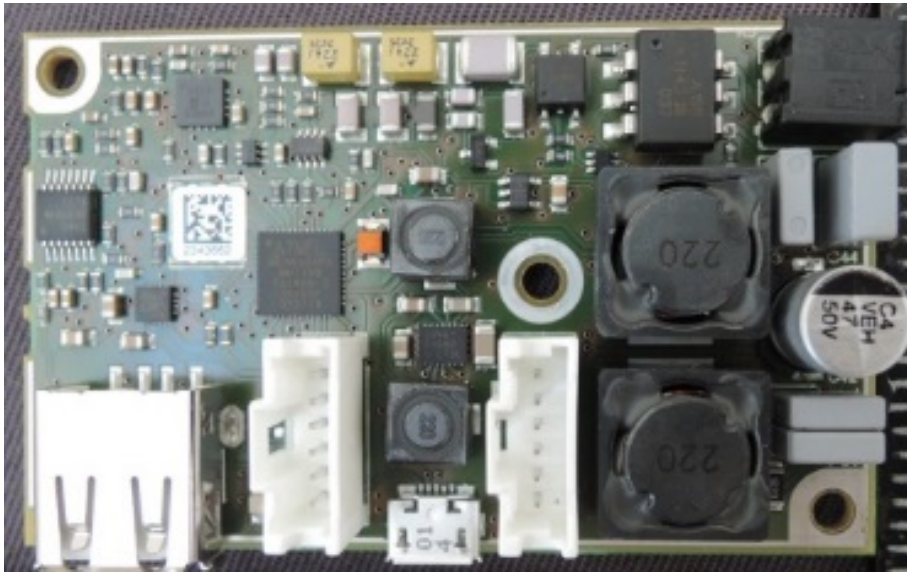
6.1. Total view with metal covers



6.2. Metal detector with covers removed



6.3. Metal detector front view PCB



6.4. Metal detector back view PCB

