

Photo report internal components

Anti-Pilferage System operating in the band 7-8MHz
Brand: Nedap
Model: ASSY T325R RF

Author	RH
Date	12 September 2017
Status	final

N.V. Nederlandsche Apparatenfabriek "Nedap"

Parallelweg 2
7141 DC Groenlo
The Netherlands

Description of EUT

Description of EUT	Anti-Pilferage System operating in the band 7-8MHz
Manufacturer	Nedap N.V.
Brand	Nedap
Commercial name	Lumen iL33
Model	ASSY T325R RF
FCC ID	CGDT325RRF
IC	1444A-T325RRF
Type of service	New Application

Applicant Information

Applicant's representative	Mr. Reinold Hubers
Company	N.V. Nederlandsche Apparatenfabriek "Nedap"
Address	Parallelweg 2
Postal code	7141 DC
City	Groenlo
PO Box	6
Postal code	7140 AA
City	Groenlo
Country	The Netherlands
Telephone number	+31 (0) 544 471111
Telefax number	+31 (0) 544 463475

0. CONTENTS

1. Overview T325R RF	4
2. Internal photo overview	5
2.1. Front view	5
2.2. Back view	6
2.3. LED/buzzer and customer counter front side	7
2.4. LED/buzzer and customer counter back side	7
7	
3. Renos transmitter/receiver and controller PCB	8
3.1. Complete top view with metal covers	8
3.2. Back view with metal covers	8
3.3. Renos with covers removed	9
3.4. Renos front side PCB	9
3.5. Renos back side PCB	10
4. Antenna matching PCB	11
4.1. Front view	11
4.2. Back view	11
5. LED/buzzer and customer counter PCB	12
5.1. Front view	12
5.2. Back view	12

1. Overview T325R RF



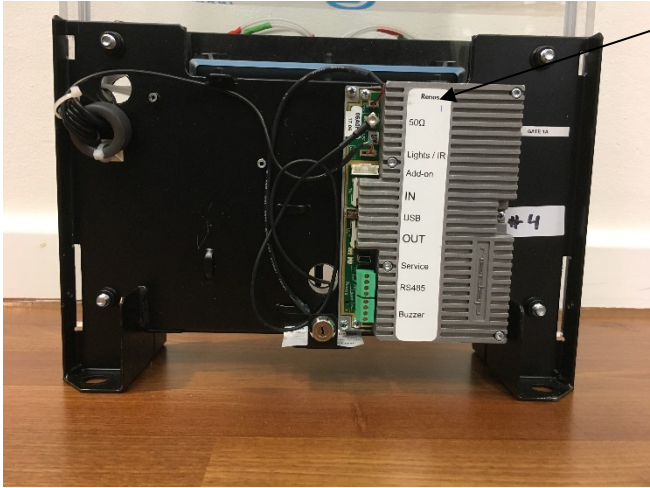
2. Internal photo overview

2.1. Front view



LED/buzzer PCB and customer counter

Antenna

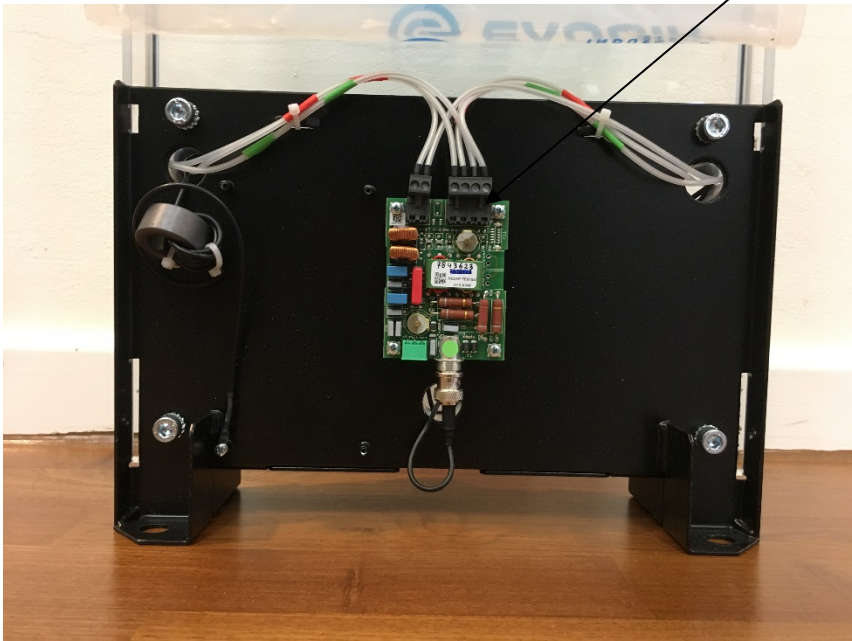


Renos 8.2MHz Transmitter/Receiver and controller PCB

2.2. Back view



Antenna matching PCB

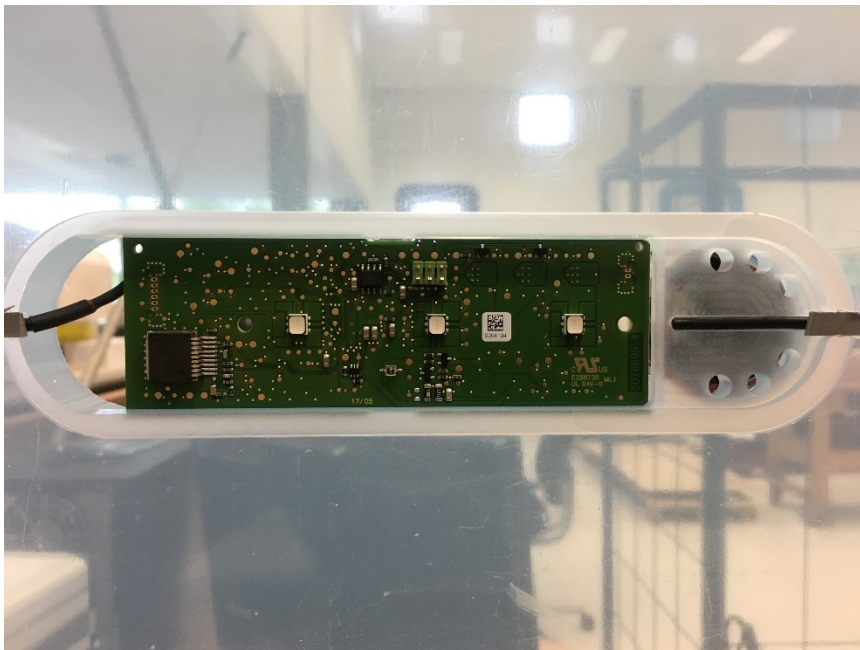


2.3. LED/buzzer and customer counter front side



Transparent white cover removed

2.4. LED/buzzer and customer counter back side



Transparent white cover removed

3. Renos transmitter/receiver and controller PCB

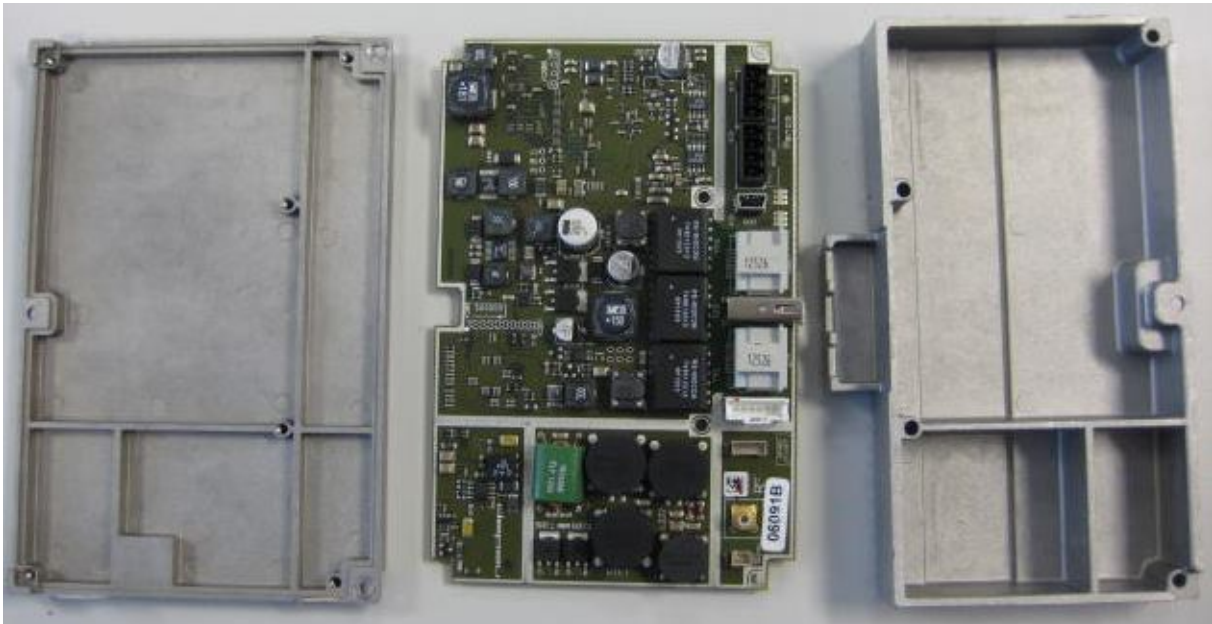
3.1. Complete top view with metal covers



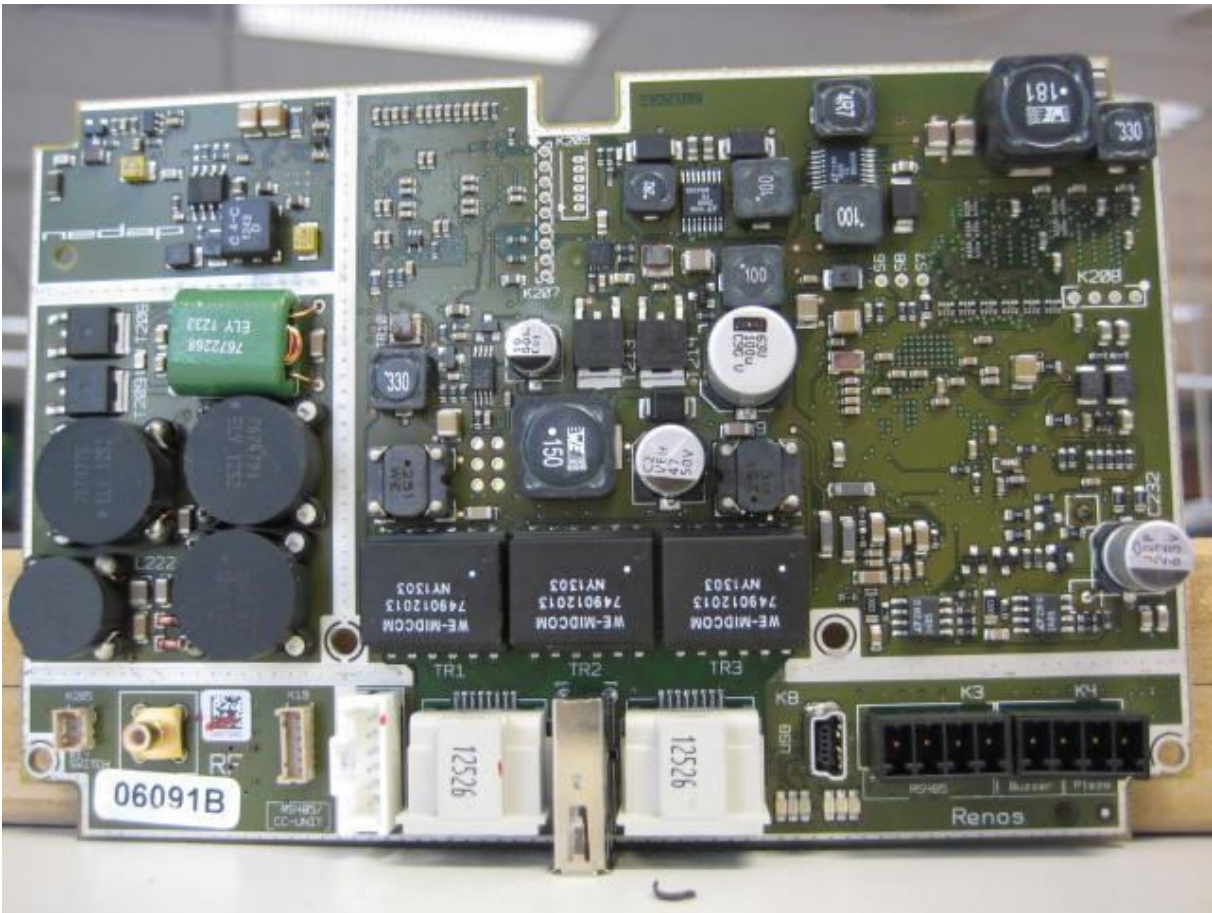
3.2. Back view with metal covers



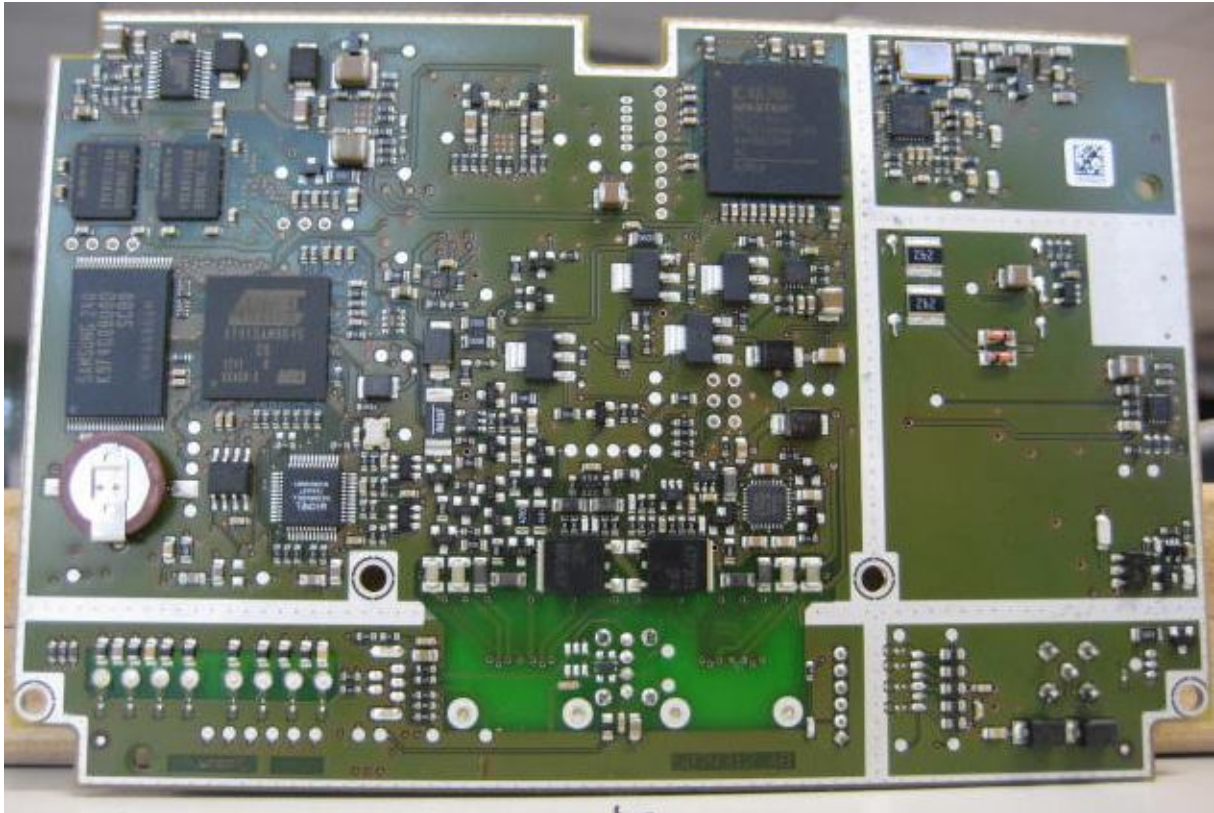
3.3. Renos with covers removed



3.4. Renos front side PCB

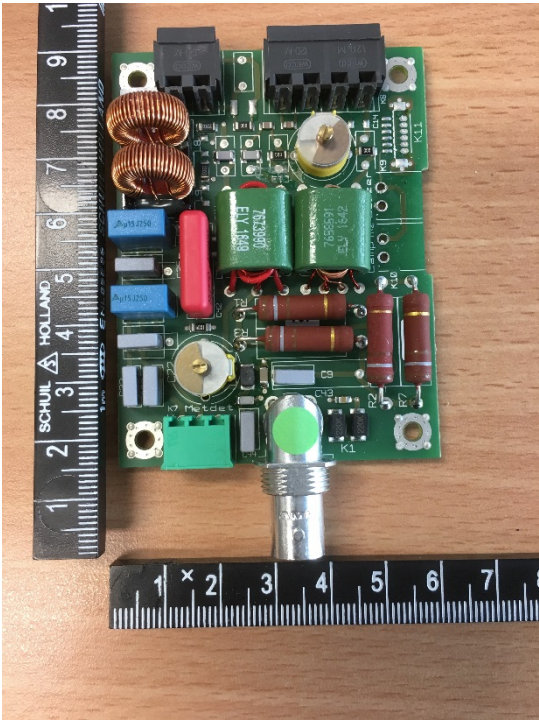


3.5. Renos back side PCB

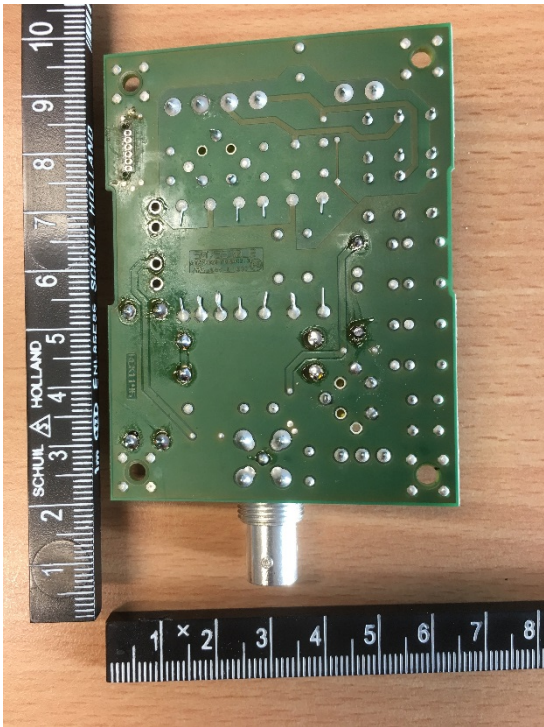


4. Antenna matching PCB

4.1. Front view

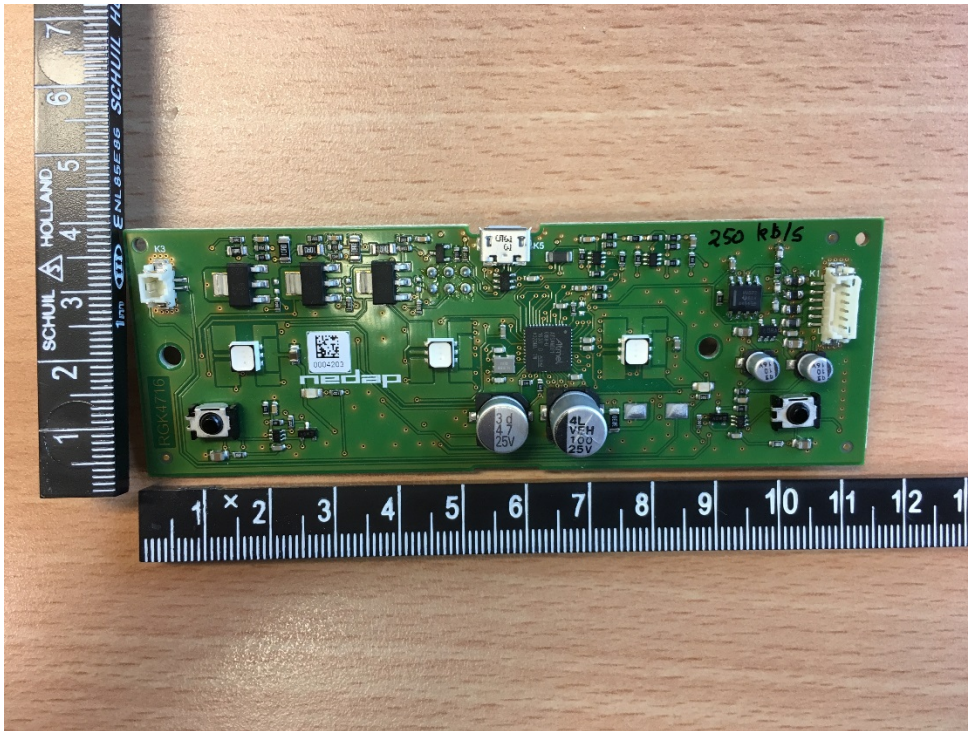


4.2. Back view



5. LED/buzzer and customer counter PCB

5.1. Front view



5.2. Back view

