
**UHF Reader mounted to the shop ceiling
operating on 902-928 MHz
Brand Nedap
Model: !D Top Region 2
Interior Photographs**

Description of EUT: UHF Reader mounted to the shop ceiling
operating on 902-928 MHz
Manufacturer: N.V. Nederlandse Apparatenfabriek "Nedap"
Brand mark: Nedap
Model: ID Top Region 2
FCC ID: CGDSTOREIDT
IC: 1444A-STOREIDT
Type of Application: New Application

Description of item

Description of EUT : UHF Reader mounted to shop ceiling operating on 902-928 MHz
Manufacturer : N.V. Nederlandsche Apparatenfabriek "Nedap"
Brand : Nedap
Models : ID Top Region 2
FCC ID : CGDSTOREIDT
IC : 1444A-STOREIDT
Type of Service : New Application

Applicant information

Applicant's representative : Mr. Jacques Hulshof
Company : N.V. Nederlandsche Apparatenfabriek "Nedap"
Address : Parallelweg 2
Postal code : 7141 DC
City : Groenlo
PO-box : 6
Postal code : 7140 AA
City : Groenlo
Country : The Netherlands
Telephone number : +31 (0) 544 471111
Telefax number : +31 (0) 544 463475

01 Jule 2013

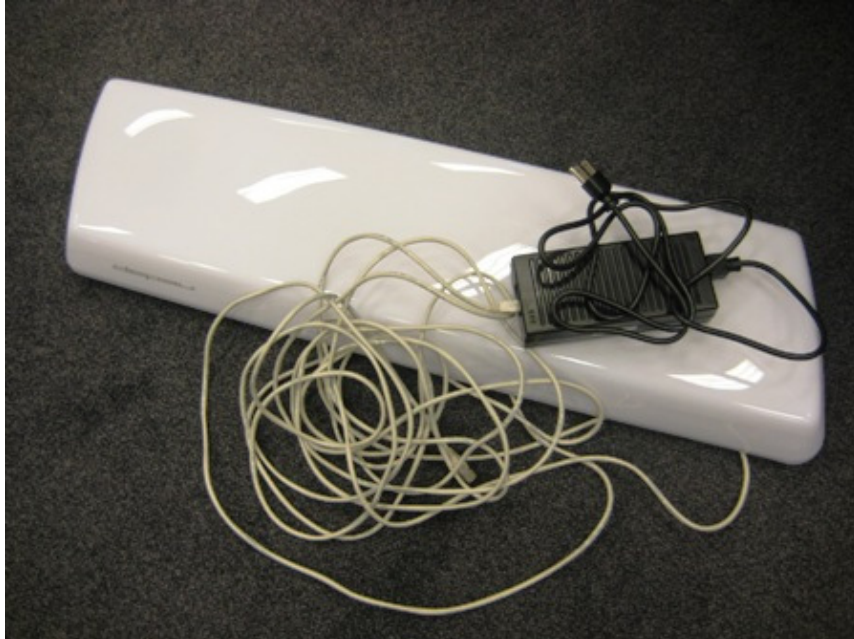
Description of EUT: UHF Reader mounted to the shop ceiling
operating on 902-928 MHz
Manufacturer: N.V. Nederlandse Apparatenfabriek "Nedap"
Brand mark: Nedap
Model: !D Top Region 2
FCC ID: CGDSTOREIDT
IC: 1444A-STOREIDT
Type of Application: New Application

Table of contents

1	EXTERNAL PHOTOGRAPH OF THE !D POS REGION 2	4
2	INTERNAL PICTURES COVERS REMOVED	4
2.1	TRANSCEIVER	4
2.2	TRANSCEIVER CLOSE UP	5
2.3	ANTENNA	5
2.4	ANTENNA PCB	6
2.4.1	Front side	6
2.4.2	Back side	6
3	902-928 MHZ TRANSCEIVER	6
3.1	FRONT SIDE WITH METAL COVER	6
3.2	FRONT SIDE METAL COVER REMOVED	7
3.3	BACKSIDE WITH METAL COVER	7
3.4	BACKSIDE METAL COVER REMOVED	8
4	PROCESSING UNIT	8
4.1	FRONT SIDE WITH METAL COVER	8
4.2	FRONT SIDE METAL COVER REMOVED	9
4.3	BACK SIDE WITH METAL COVER	9
4.4	BACK SIDE METAL COVER REMOVED	10
5	LED PCB	10
5.1	FRONT SIDE	10
5.2	BACK SIDE	11

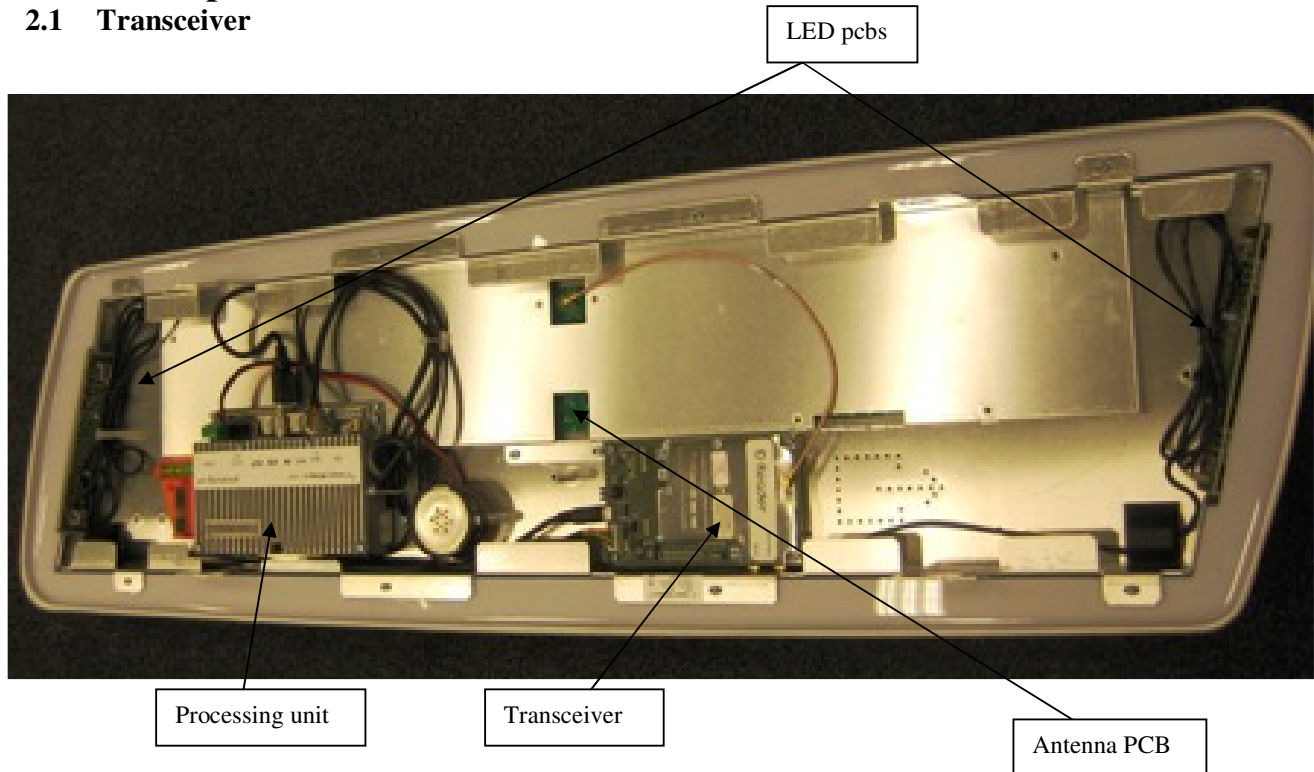
Description of EUT: UHF Reader mounted to the shop ceiling
operating on 902-928 MHz
Manufacturer: N.V. Nederlandse Apparatenfabriek "Nedap"
Brand mark: Nedap
Model: !D Top Region 2
FCC ID: CGDSTOREIDT
IC: 1444A-STOREIDT
Type of Application: New Application

1 External Photograph of the !D POS Region 2



2 Internal pictures covers removed

2.1 Transceiver

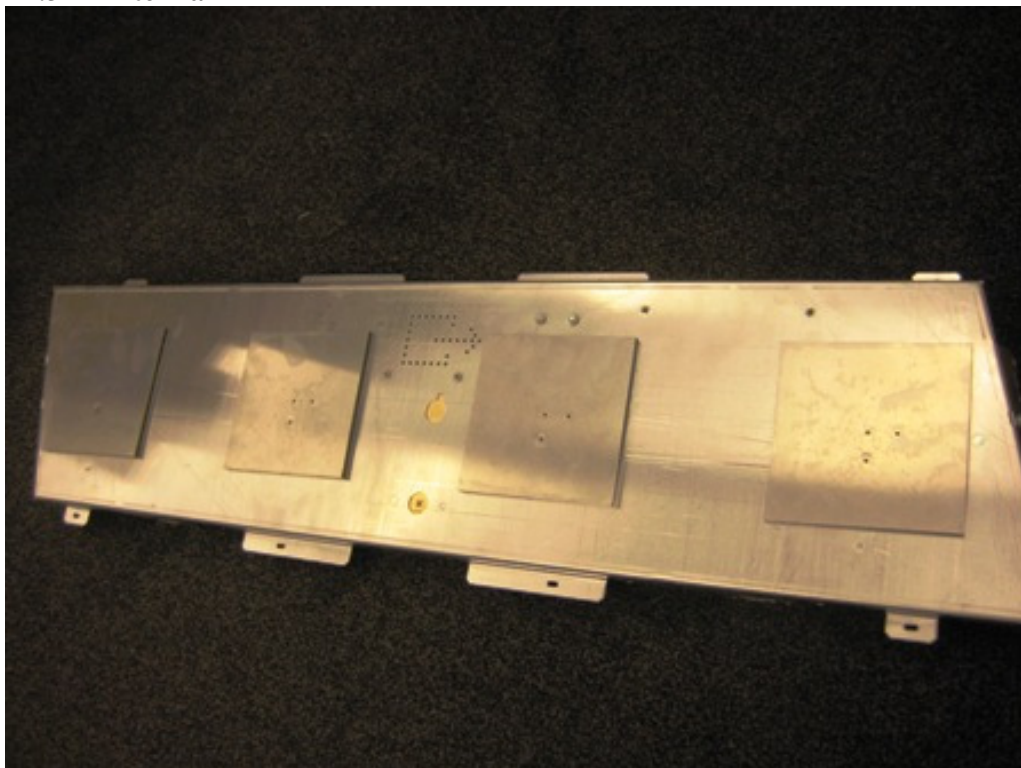


Description of EUT: UHF Reader mounted to the shop ceiling
operating on 902-928 MHz
Manufacturer: N.V. Nederlandse Apparatenfabriek "Nedap"
Brand mark: Nedap
Model: !D Top Region 2
FCC ID: CGDSTOREIDT
IC: 1444A-STOREIDT
Type of Application: New Application

2.2 Transceiver close up



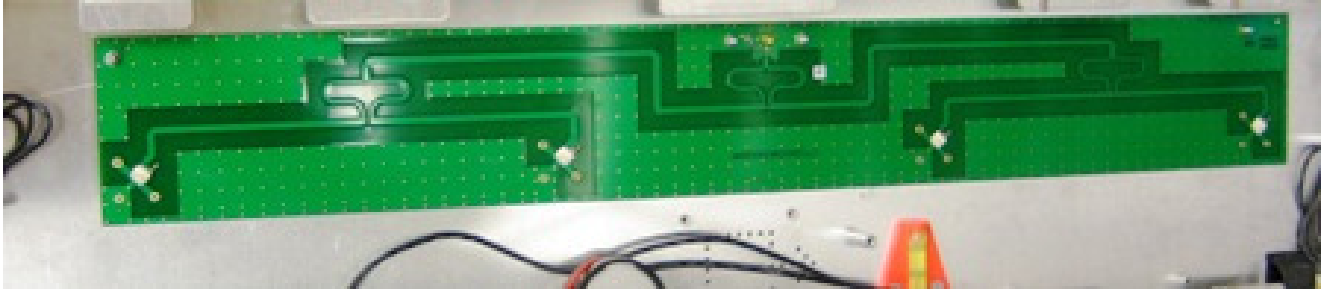
2.3 Antenna



Description of EUT: UHF Reader mounted to the shop ceiling
operating on 902-928 MHz
Manufacturer: N.V. Nederlandse Apparatenfabriek "Nedap"
Brand mark: Nedap
Model: !D Top Region 2
FCC ID: CGDSTOREIDT
IC: 1444A-STOREIDT
Type of Application: New Application

2.4 Antenna pcb

2.4.1 Front side

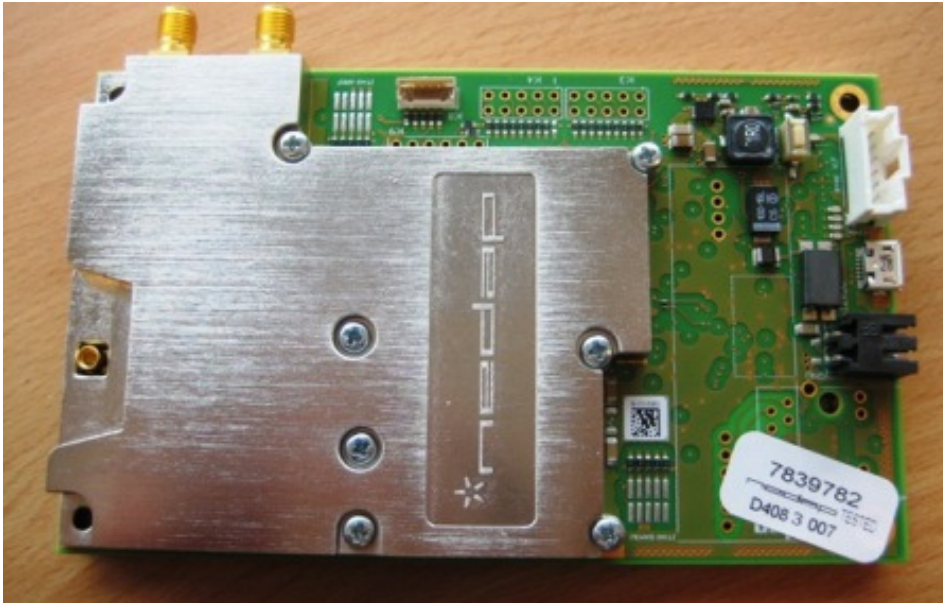


2.4.2 Back side



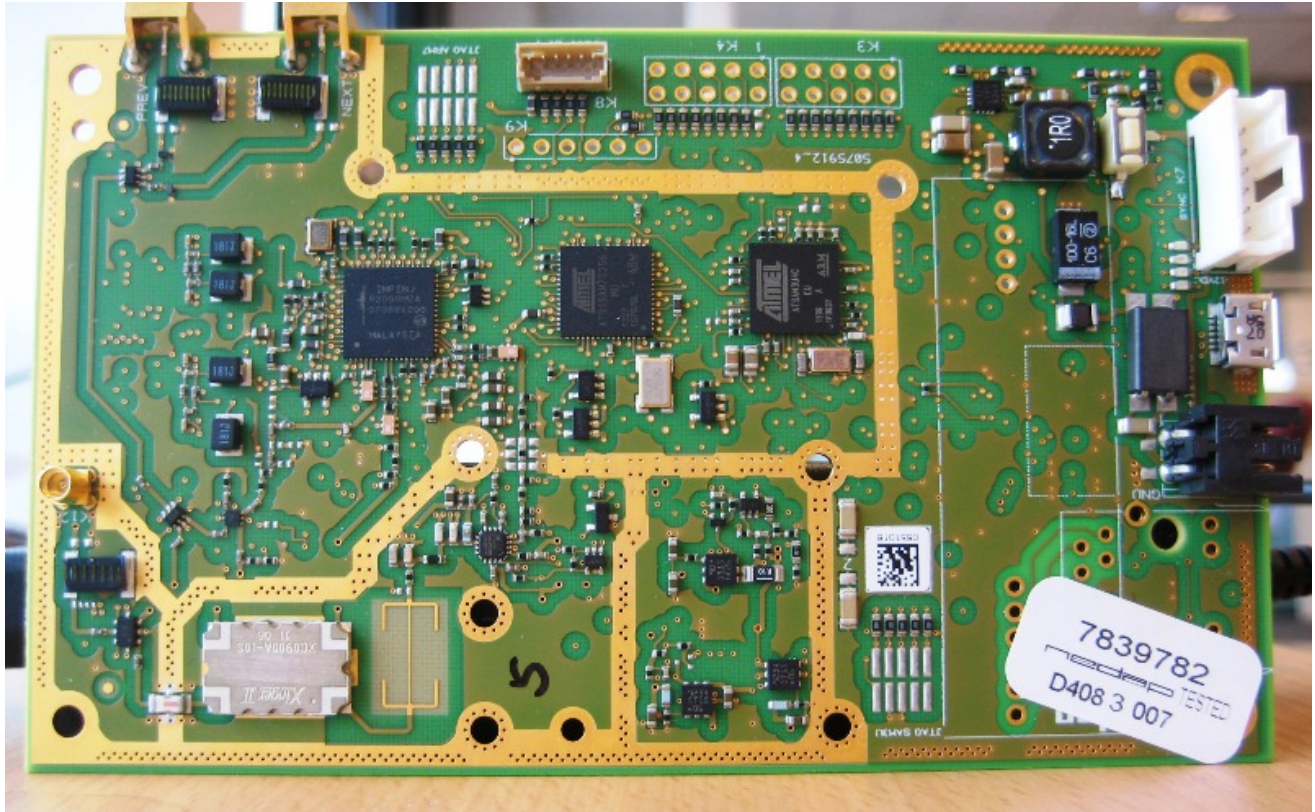
3 902-928 MHz transceiver

3.1 Front side with metal cover



Description of EUT: UHF Reader mounted to the shop ceiling
operating on 902-928 MHz
Manufacturer: N.V. Nederlandse Apparatenfabriek "Nedap"
Brand mark: Nedap
Model: !D Top Region 2
FCC ID: CGDSTOREIDT
IC: 1444A-STOREIDT
Type of Application: New Application

3.2 Front side metal cover removed

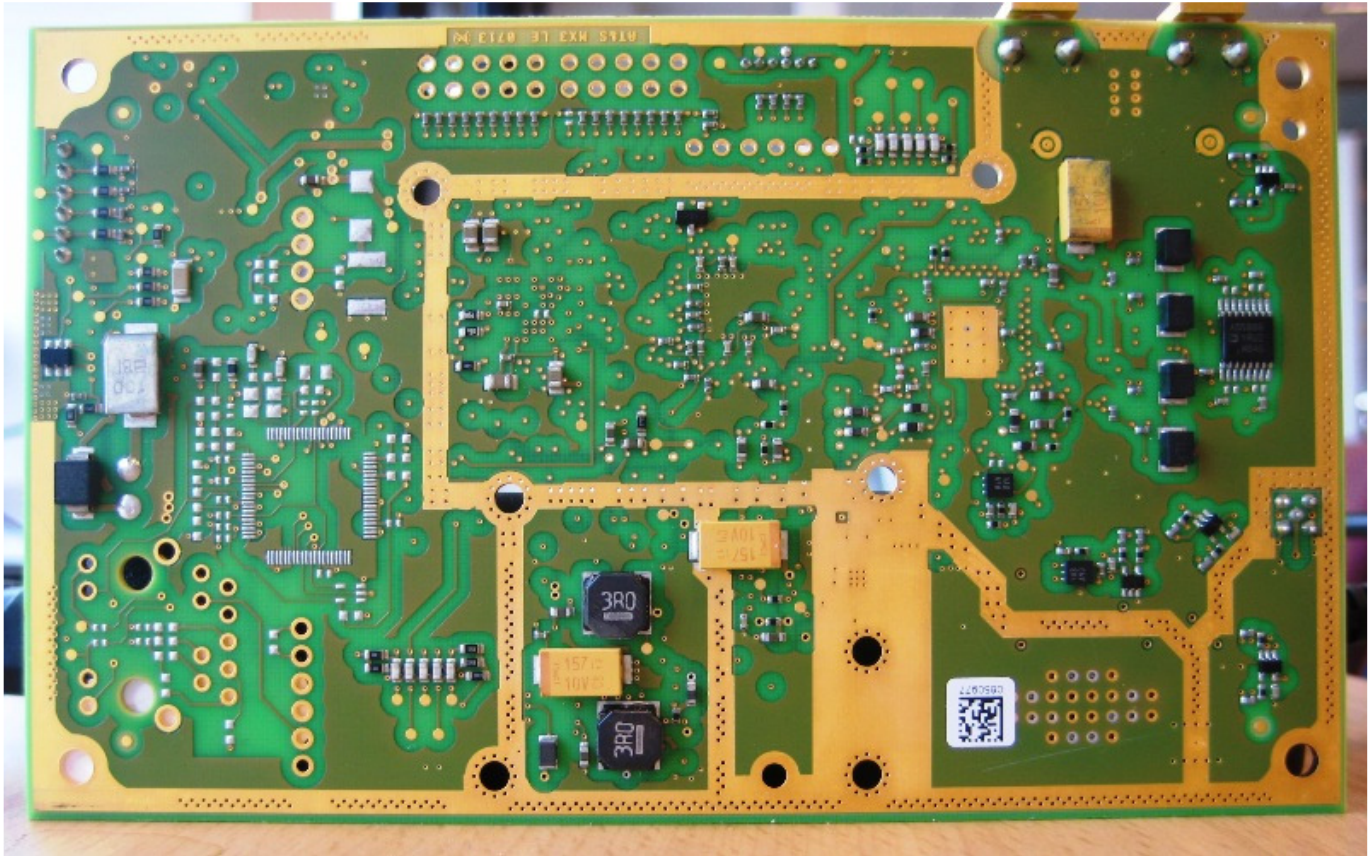


3.3 Backside with metal cover



Description of EUT: UHF Reader mounted to the shop ceiling
operating on 902-928 MHz
Manufacturer: N.V. Nederlandse Apparatenfabriek "Nedap"
Brand mark: Nedap
Model: !D Top Region 2
FCC ID: CGDSTOREIDT
IC: 1444A-STOREIDT
Type of Application: New Application

3.4 Backside metal cover removed



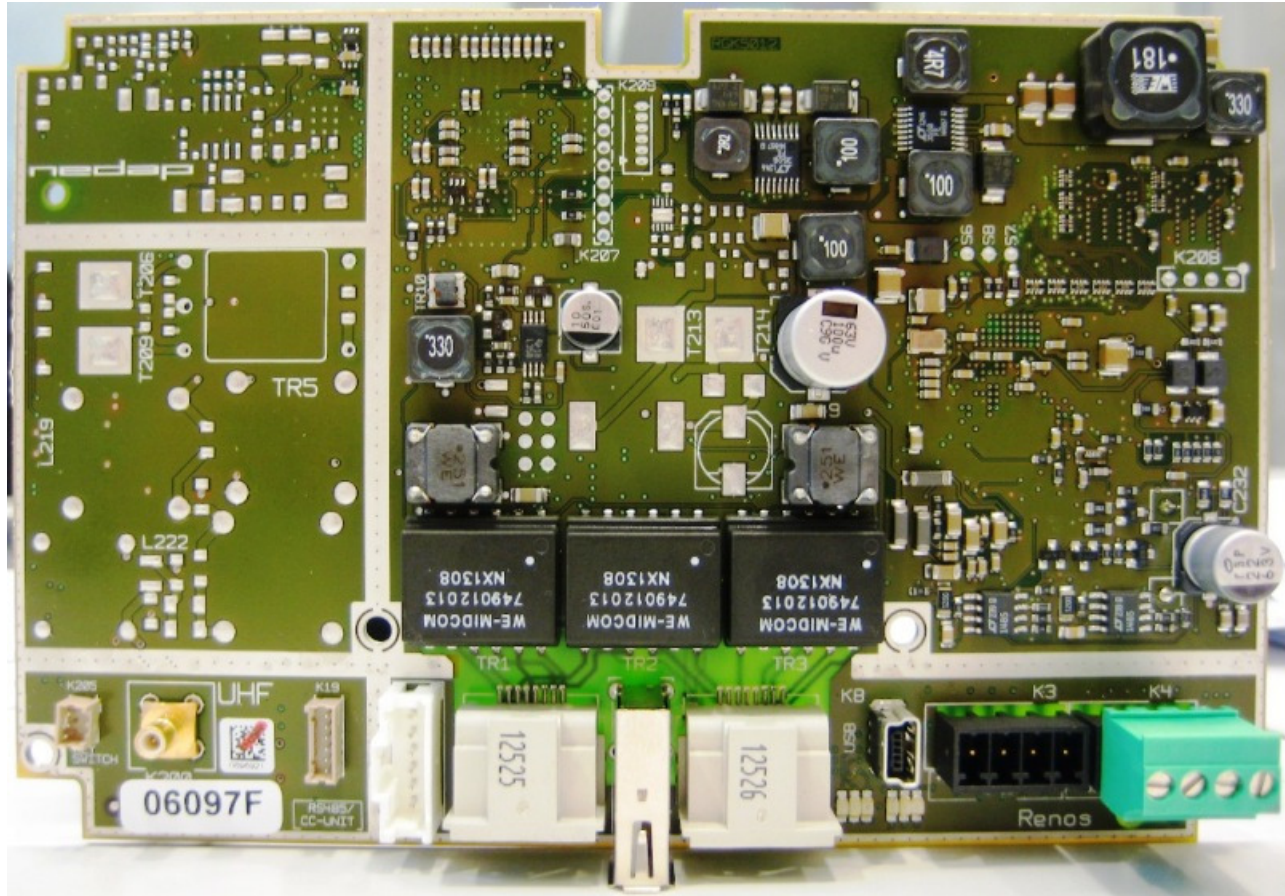
4 Processing unit

4.1 Front side with metal cover



Description of EUT: UHF Reader mounted to the shop ceiling operating on 902-928 MHz
Manufacturer: N.V. Nederlandse Apparatenfabriek "Nedap"
Brand mark: Nedap
Model: !D Top Region 2
FCC ID: CGDSTOREIDT
IC: 1444A-STOREIDT
Type of Application: New Application

4.2 Front side metal cover removed

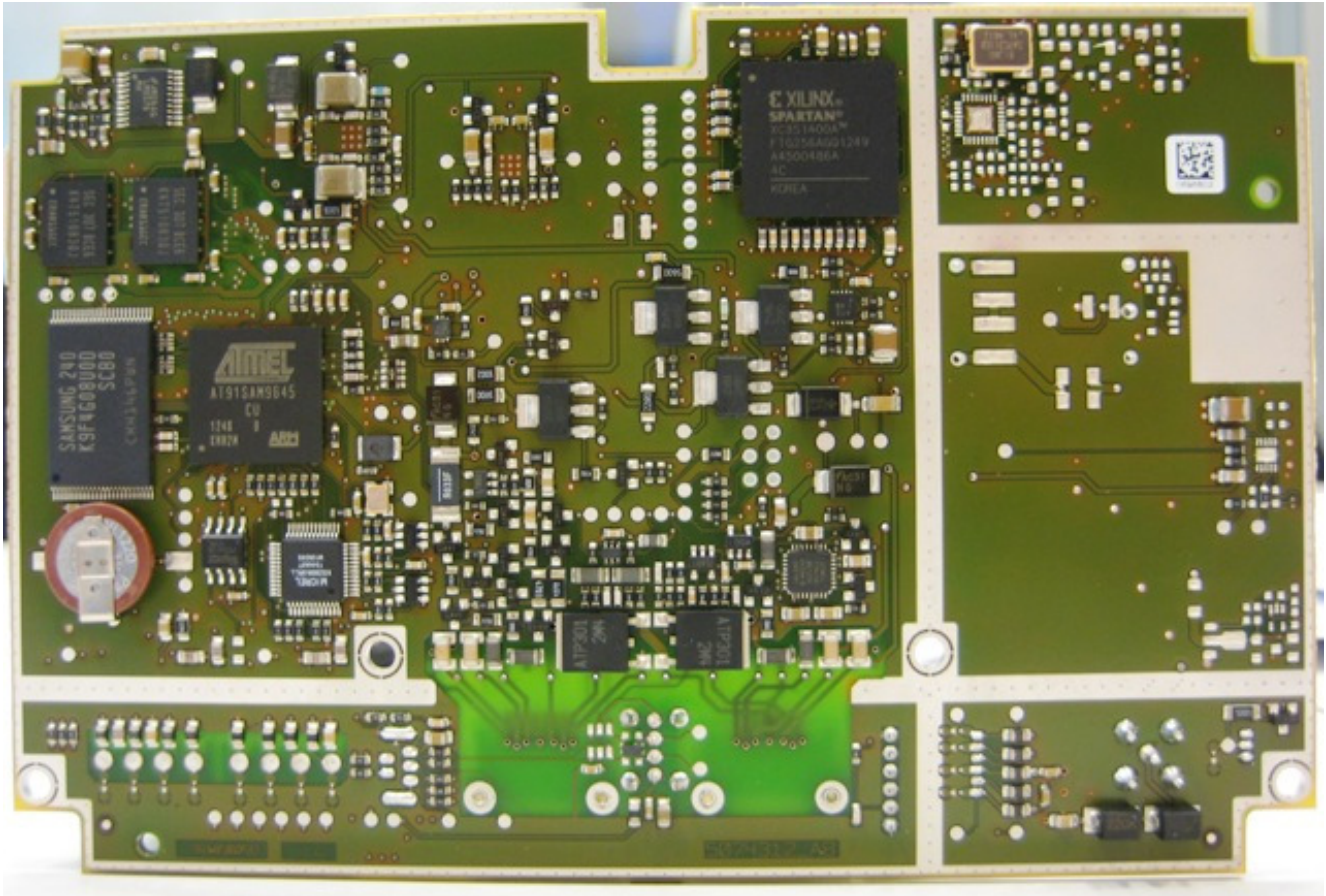


4.3 Back side with metal cover



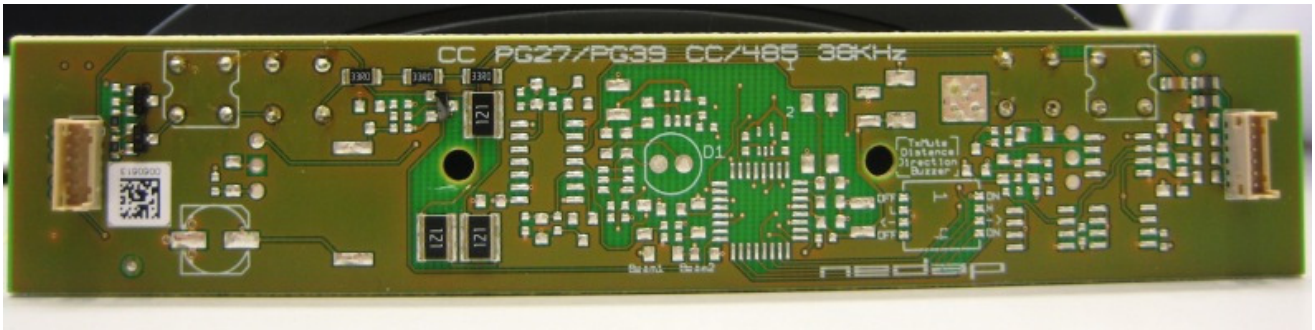
Description of EUT: UHF Reader mounted to the shop ceiling
operating on 902-928 MHz
Manufacturer: N.V. Nederlandse Apparatenfabriek "Nedap"
Brand mark: Nedap
Model: !D Top Region 2
FCC ID: CGDSTOREIDT
IC: 1444A-STOREIDT
Type of Application: New Application

4.4 Back side metal cover removed



5 LED PCB

5.1 Front side



Description of EUT: UHF Reader mounted to the shop ceiling
operating on 902-928 MHz
Manufacturer: N.V. Nederlandse Apparatenfabriek "Nedap"
Brand mark: Nedap
Model: !D Top Region 2
FCC ID: CGDSTOREIDT
IC: 1444A-STOREIDT
Type of Application: New Application

5.2 Back side

