
**Transmitter of a Cow Pedometer
operating on 433 MHz
Several Brands
Model: LACTIVATOR REALTIME
Label Location and artwork**

Description of EUT: Transmitter of a Cow Pedometer
Manufacturer: N.V. Nederlandse Apparatenfabriek "Nedap"
Brand mark: Several
Model: LACTIVATOR REALTIME
FCC ID: CGDRTLACT
IC: 1444A-RTLACT

Description of item

Description of EUT : Transmitter of a Cow Pedometer
Manufacturer : N.V. Nederlandsche Apparatenfabriek "Nedap"
Brands : NEDAP, LELY, GEA, BOUMATIC, INTERPULS, CRV
Models : LACTIVATOR REALTIME NEDAP, LACTIVATOR REALTIME LELY,
LACTIVATOR REALTIME GEA, LACTIVATOR REALTIME BOUMATIC,
LACTIVATOR REALTIME INTERPULS, LACTIVATOR REALTIME
FCC ID : CGDRTLACT
IC : 1444A-RTLACT

Applicant information

Applicant's representative : Mr. Jacques Hulshof
Company : N.V. Nederlandsche Apparatenfabriek "Nedap"
Address : Parallelweg 2
Postal code : 7141 DC
City : Groenlo
PO-box : 6
Postal code : 7140 AA
City : Groenlo
Country : The Netherlands
Telephone number : +31 (0) 544 471111
Telefax number : +31 (0) 544 463475

27 October 2011

Table of contents

1	LOCATION OF THE LABELS ON THE LACTIVATOR RT.....	4
1.1	THE LABEL FCC ID: CGDRTLACT AND IC: 1444A-RTLACT ON THE LACTIVATOR RT	4
1.2	MODEL NUMBER, FCC ID: CGDRTLACT AND IC: 1444A-RTLACT ON THE BOX.....	4
1.3	LEAFLET ADDED TO EACH SHIPPING CARTON WITH TEN LACTIVATORS RT	5
2	PHOTOGRAPHS OF LABEL INFORMATION	5
2.1	LABELING WITH THE TEXT ON THE LACTIVATOR RTI.....	5
2.2	LABELS ON BOXES OF THE DIFFERENT MODELS LACTIVATOR RT	6
2.2.1	<i>LELY</i>	6
2.2.2	<i>INTERPULS</i>	6
2.2.3	<i>BOUMATIC</i>	7
2.2.4	<i>CRV</i>	7
2.2.5	<i>GEA</i>	8
2.2.6	<i>NEDAP</i>	8
2.3	COMPLIANCE STATEMENT ON LEAFLET IN THE SHIPPING BOX OF THE LACTIVATOR RT	9
3	ARTWORK OF THE LABELS.....	9
3.1	LABEL FOR THE LACTIVATOR RT	9
3.2	LABEL OF THE DIFFERENT BOXES VP1004 VELOS.....	10
3.2.1	<i>LELY</i>	10
3.2.2	<i>INTERPULS</i>	10
3.2.3	<i>BOUMATIC</i>	11
3.2.4	<i>CRV</i>	11
3.2.5	<i>GEA</i>	12
3.2.6	<i>NEDAP</i>	12
4	PHOTOGRAPH OF THE DIFFERENT LABELS.....	13

Description of EUT: Transmitter of a Cow Pedometer
Manufacturer: N.V. Nederlandse Apparatenfabriek "Nedap"
Brand mark: Several
Model: LACTIVATOR REALTIME
FCC ID: CGDRTLACT
IC: 1444A-RTLACT

1 Location of the labels on the LACTIVATOR RT

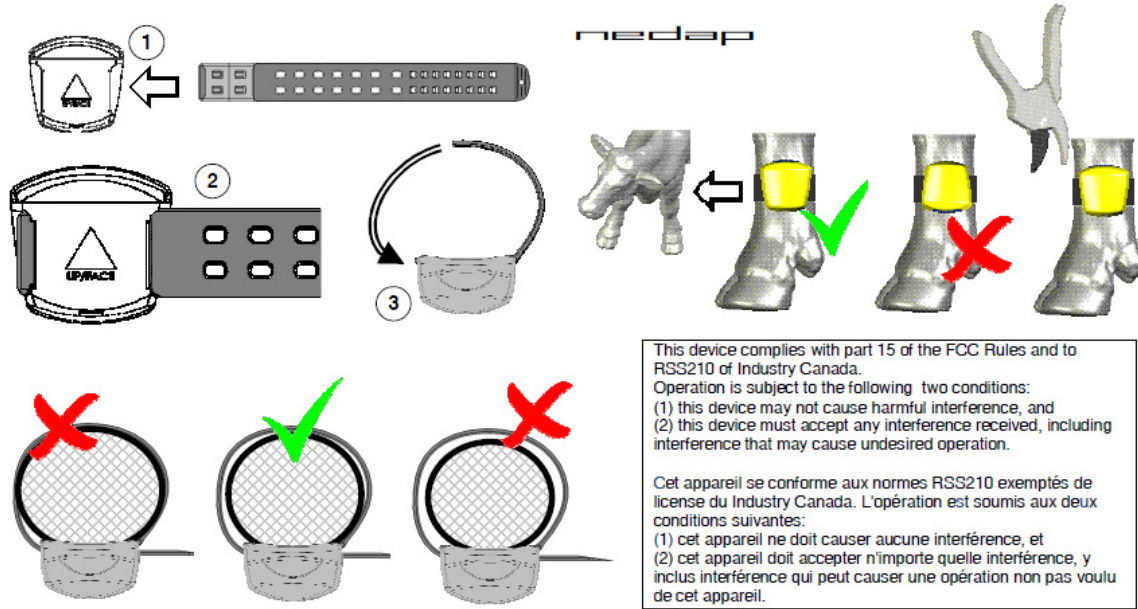
1.1 The label FCC ID: CGDRTLACT and IC: 1444A-RTLACT on the LACTIVATOR RT



1.2 Model number, FCC ID: CGDRTLACT and IC: 1444A-RTLACT on the box



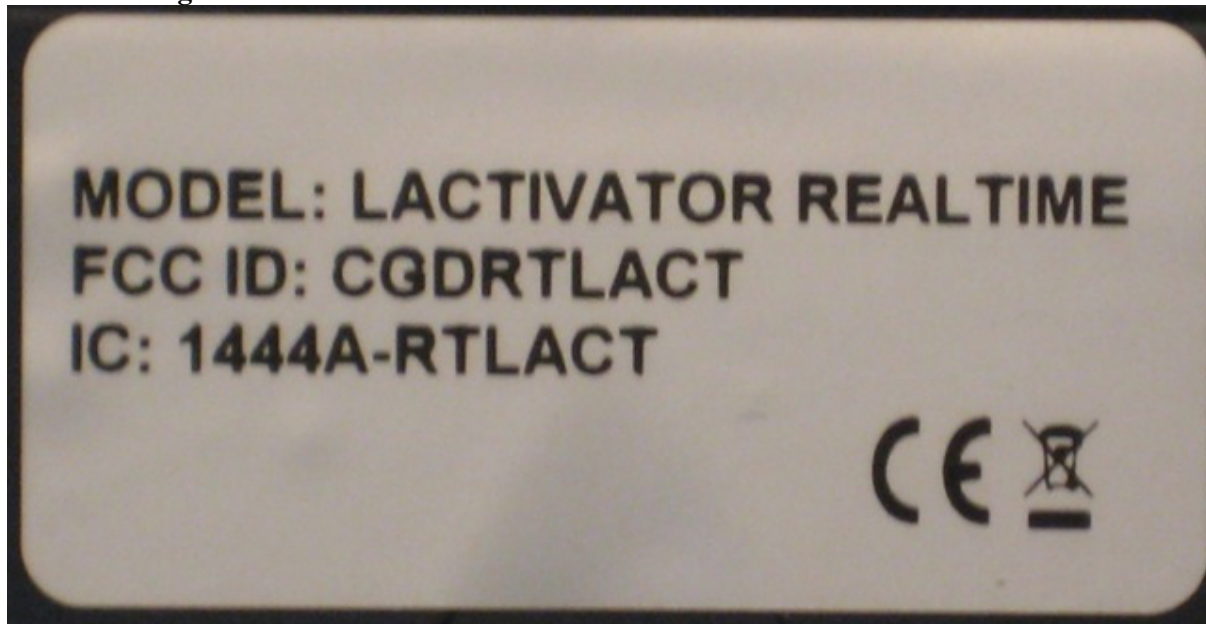
1.3 Leaflet added to each shipping carton with ten LACTIVATORS RT



5272637-28.01D

2 Photographs of label information

2.1 Labeling with the text on the LACTIVATOR RTI



Description of EUT: Transmitter of a Cow Pedometer
Manufacturer: N.V. Nederlandse Apparatenfabriek "Nedap"
Brand mark: Several
Model: LACTIVATOR REALTIME
FCC ID: CGDRTLACT
IC: 1444A-RTLACT

2.2 Labels on boxes of the different models LACTIVATOR RT

2.2.1 LELY



2.2.2 INTERPULS



Description of EUT: Transmitter of a Cow Pedometer
Manufacturer: N.V. Nederlandse Apparatenfabriek "Nedap"
Brand mark: Several
Model: LACTIVATOR REALTIME
FCC ID: CGDRTLACT
IC: 1444A-RTLACT

2.2.3 BOUMATIC

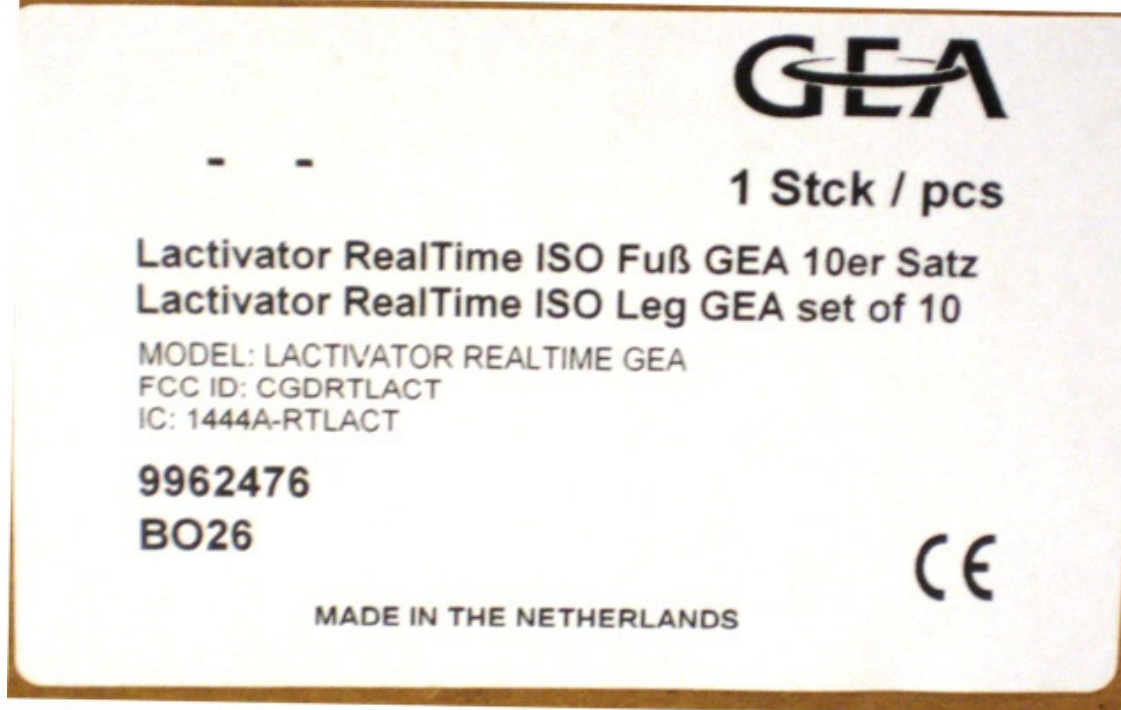


2.2.4 CRV



Description of EUT: Transmitter of a Cow Pedometer
Manufacturer: N.V. Nederlandse Apparatenfabriek "Nedap"
Brand mark: Several
Model: LACTIVATOR REALTIME
FCC ID: CGDRTLACT
IC: 1444A-RTLACT

2.2.5 GEA



2.2.6 NEDAP



2.3 Compliance Statement on leaflet in the shipping box of the LACTIVATOR RT

This device complies with part 15 of the FCC Rules and to RSS210 of Industry Canada.

Operation is subject to the following two conditions:

- (1) this device may not cause harmful interference, and
- (2) this device must accept any interference received, including interference that may cause undesired operation.

Cet appareil se conforme aux normes RSS210 exemptés de licence du Industry Canada. L'opération est soumise aux deux conditions suivantes:

- (1) cet appareil ne doit causer aucune interférence, et
- (2) cet appareil doit accepter n'importe quelle interférence, y compris l'interférence qui peut causer une opération non désirée de cet appareil.

3 Artwork of the labels

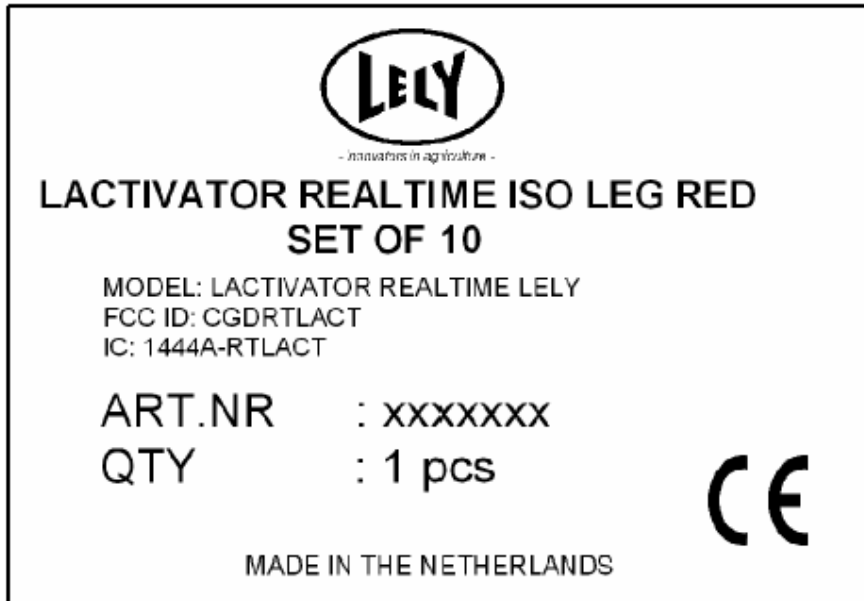
3.1 Label for the LACTIVATOR RT

MODEL: LACTIVATOR REALTIME
FCC ID: CGDRTLACT
IC: 1444A-RTLACT



3.2 Label of the different boxes VP1004 VELOS

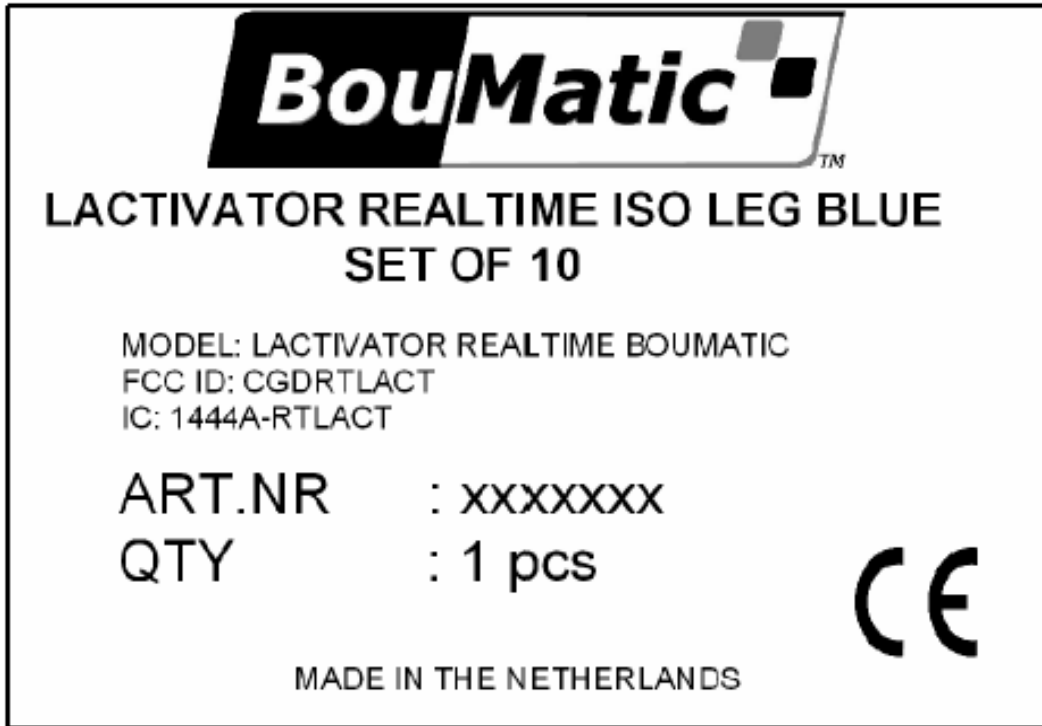
3.2.1 LELY



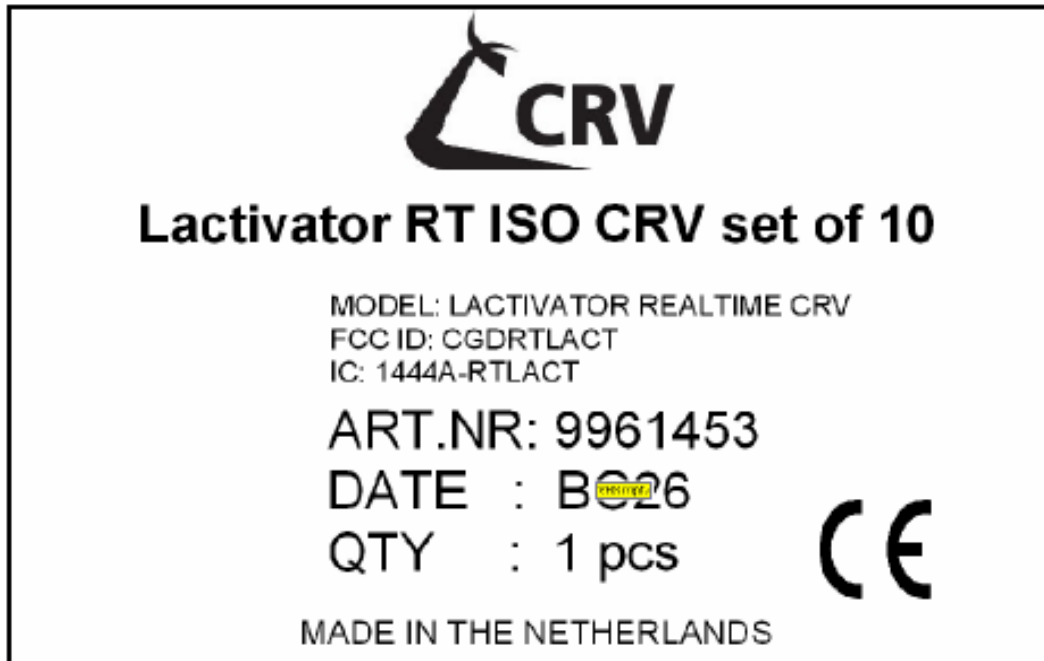
3.2.2 INTERPULS



3.2.3 BOUMATIC



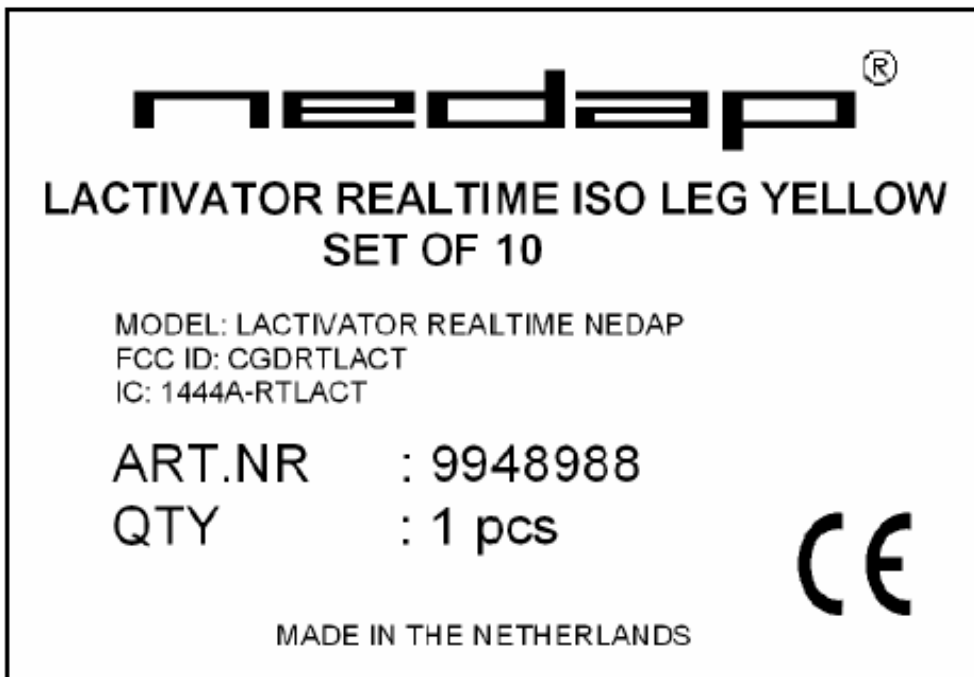
3.2.4 CRV



3.2.5 GEA



3.2.6 NEDAP



Description of EUT: Transmitter of a Cow Pedometer
Manufacturer: N.V. Nederlandse Apparatenfabriek "Nedap"
Brand mark: Several
Model: LACTIVATOR REALTIME
FCC ID: CGDRTLACT
IC: 1444A-RTLACT

4 Photograph of the different labels

