

**INSTALLATION GUIDE: PROXIMITY READER
13.56 MHZ TABLE UNDER EDITION**



BEYOND THE BOOK

Installation Guide

Version 3.2 | 12 May 2011

[Installation Guide]

TECHNICAL SUPPORT

EMAIL ADDRESS

info@nedaplibrix.com

VISITORS ADDRESS

Nedap Librix
Parallelweg 2d
Groenlo
The Netherlands

POSTAL ADDRESS

Nedap Librix
P.O. box 102
7140 AC Groenlo
The Netherlands

TEL & FAX

Tel: +31(0)544 47 15 09
Fax: +31(0)544 46 58 14

©Nedap Librix
Netherlands
Parallelweg 2d, 7141 DC Groenlo

The software / hardware described in this document / file is furnished under a license agreement and may be used only in accordance with the terms of agreement.

Documentation Installation Guide Copyright Notice

Any technical documentation that is made available by Nedap Librix is the copyrighted work of Nedap Librix and is owned by Nedap Librix.

NO WARRANTY. The technical documentation is being delivered to you and Nedap Librix makes no warranty as to its accuracy or use. Any use of the technical documentation or the information contained herein is at the risk of the user. Documentation may include technical or other inaccuracies or typographical errors. Nedap Librix has the right to make changes without prior notice. No part of this publication may be copied without the express written permission of Nedap Librix, Parallelweg 2d, 7141 DC Groenlo, The Netherlands.

Trademarks

Nedap and the Nedap logo are registered trademarks of N.V. Nederlandsche Apparatenfabriek “Nedap”, Parallelweg 2, 7141 DC Groenlo, The Netherlands. Other product names mentioned in this manual may be trademarks or registered trademarks of their respective companies and are hereby acknowledged. Printed in the Netherlands.

CHANGE HISTORY

Date	Version	Description
27-10-2006	1.0	First version
21-09-2010	2.0	Changed layout to librix style
03-03-2011	3.0	Changed screenshots
18-04-2011	3.1	Added FCC section
12-05-2011	3.2	Add text to FCC section

CONTENTS

CHAPTER 1: HARDWARE INSTRUCTIONS		07
1.1. Steps		07
CHAPTER 2: SOFTWARE INSTRUCTIONS		09
2.1. Steps		09
2.2. Contact & support		13
CHAPTER 3: FREQUENTLY ASKED QUESTONS		14
CHAPTER 4. FCC AND IC DECLARATION		15
CHAPTER 5. DISCLAIMER		15

NOTE

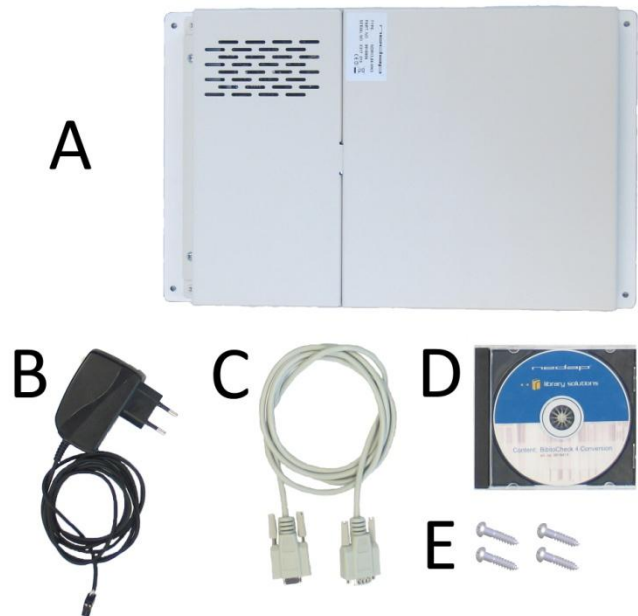
The staff station can, in principle, replace barcode scanners. The unit enables the staff to identify all articles with an RFID-label. The standard staff station consists of an RFID reader positioned on the counter/desk (tabletop model). The reader is connected to the existing hardware (PC) and/or library automation system. The BiblioCheck 4 Lite software is designed for the simple use of the reader in combination with your current database management system.

Included:

- 1x [A] Proximity Reader
- 1x [B] Power cable
- 1x [C] RS232-cable
- 1x [D] Nedap installation CD
- 4x [E] Screw for mounting the proximity reader

Not Included:

- 1x Cross point-screwdriver
- 1x Computer with CD/DVD-drive
- 1x Item containing a RFID-Label



If no serial-port is available on the computer, a Serial-to-USB convertor needs to be ordered to make this product work.

SAFETY INSTRUCTIONS & PRECAUTIONS

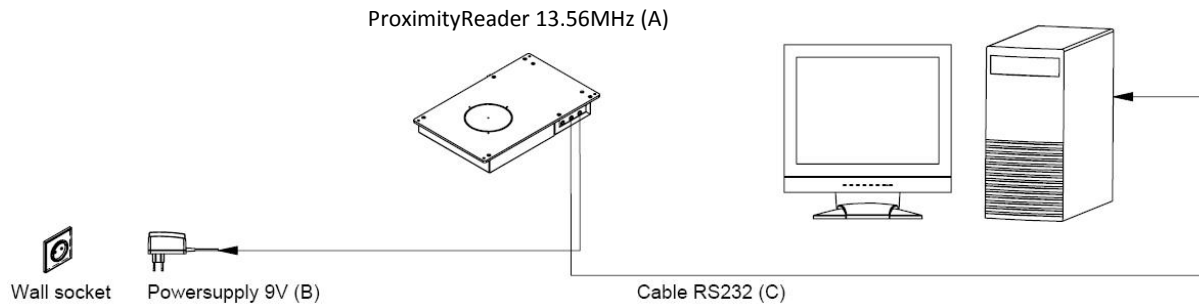
The following safety instructions and precautions should be observed during normal use, service and repair.



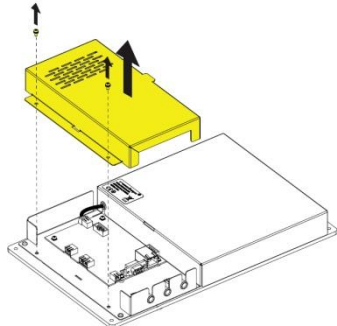
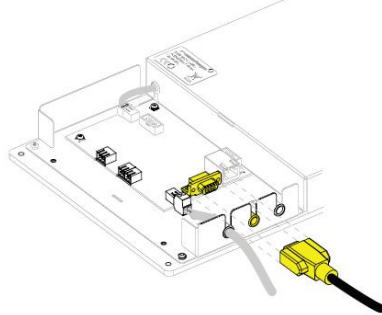
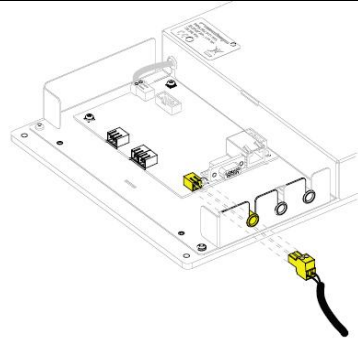
- Do not change anything regarding the proximity reader or the installation procedure.
- Always switch off the power (by disconnecting the power plug) before you remove the cover.
- Do not mount the proximity under a table with an metal frame or under metal tables.

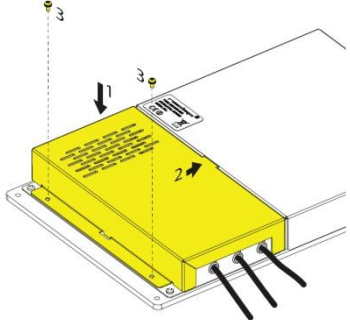
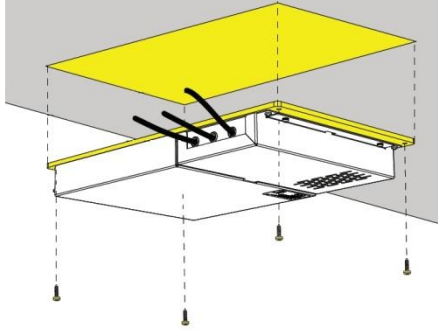
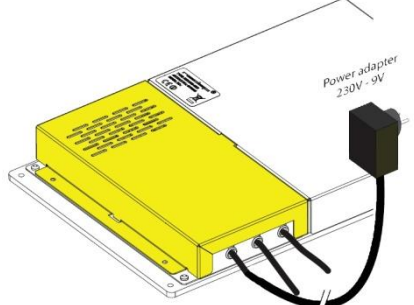
CHAPTER 1: HARDWARE INSTRUCTIONS

Installation scheme:



1.1 STEPS

<p>Step 1: Remove the cover of the proximity reader [A] by removing the two screws which hold the cover in place.</p>	
<p>Step 2: Connect the RS232-cable [C] to the proximity reader [A].</p> <p>Step 3: Connect the RS232-cable [C] to the serial-port of the computer. The serial-port is most likely located on the back of the computer.</p>	
<p>Step 4: Connect the power cable [B] to the proximity reader [A]. The side with the screws needs to be up. This way, you will insert the plug the correct way.</p> <p>DO NOT ACTIVATE THE POWER BEFORE YOU HAVE COMPLETED STEP 5!</p>	

<p>Step 5: Replace the proximity reader's cover. Make sure you also put the screws back in their original place.</p>	
<p>Step 6: Mount the proximity reader [A] using the supplied screws [E]. Keep in mind that the center spot in the circle is the center of the antenna's detection field.</p>	
<p>Step 7: Activate the power by putting the plug of the power cable [B] in an electric point</p> <p>Step 8: Proceed to the SOFTWARE INSTRUCTIONS.</p>	

CHAPTER 2: SOFTWARE INSTRUCTIONS

Notice:

The screenshots in this guide may differ from what the computer is displaying. However, the procedure remains the same.

Minimal system requirements:

- Operating system:
 - o Windows 2000, XP Professional SP3, Vista Business and 7 Business
 - o Windows Installer 3.1
 - o Microsoft .NET framework 2 sp2
- CD/DVD-drive

2.1 STEPS

Step 1:

Start up the computer. Log in with 'administrator rights'.

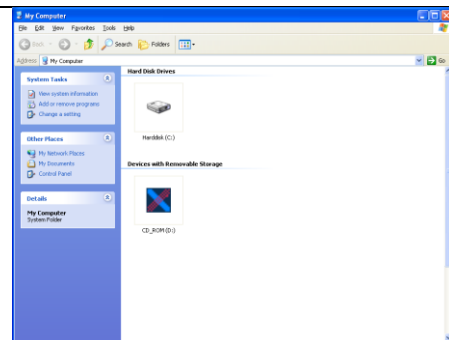
Step 2:

Insert the installation-CD [D].

Step 3:

Normally, the CD will run automatically. When this does not occur:

Go to: Start > My Computer > CD/DVD-drive (Now called: Nedap Librix).

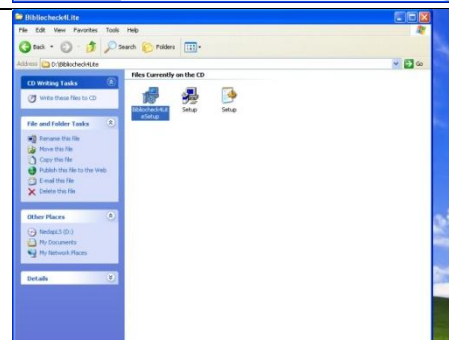


Step 4:

Enter the folder 'BiblioCheck4Lite'.

Step 5:

Run 'BiblioCheck4LiteSetup.msi'.



Step 6:

Read the instructions and click on 'Next >'.

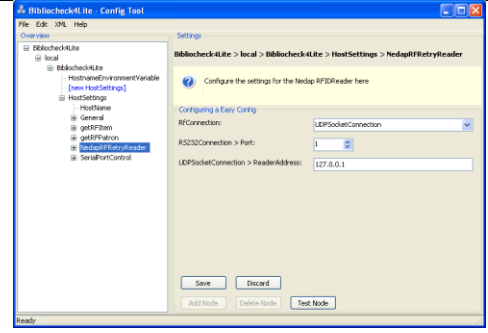


<p>Step 7: Make sure 'Run Configuration' is checked and click 'Next >'.</p>	
<p>Step 8: Make sure 'Everyone' is checked so Bibliocheck4Lite is installed for all accounts using the computer. Click 'Next >'</p>	
<p>Step 9: Click 'Next >' to start the installation.</p> <p>Step 10: The installation progress will be displayed. Wait for the installation to be finished.</p>	
<p>Step 11: Click 'Close' to finish the installation.</p>	
<p>Step 12: The configuration tool will start up.</p>	

STEP 13
 At the configuration tool:

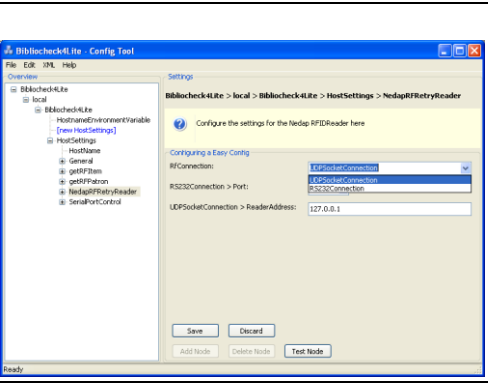
If the '+' is clicked, it will expand the menu.

In the configuration tool. Go to: *Bibliocheck4Lite > local > Bibliocheck4Lite > HostSettings > NedapRFRetryReader.*



Step 14:
 On the right side, click on the arrow next to RFConnection, and choose 'RS232Connection' from the dropdown-menu.

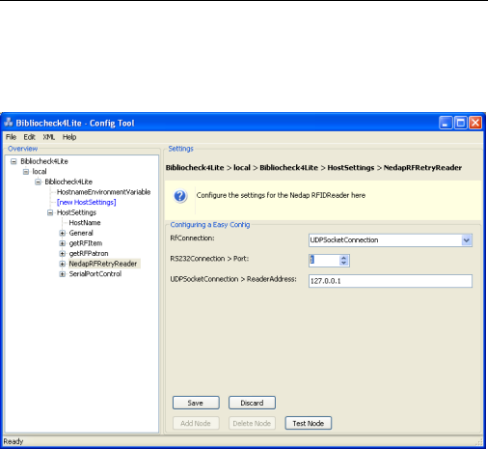
Step 15:
 Click 'Save'.



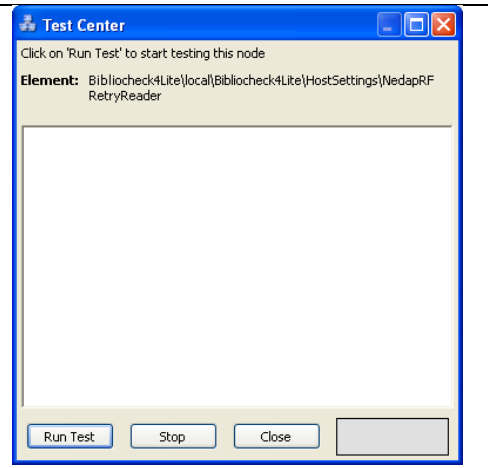
Step 16:
 Select the correct COM-Port as the the proximity-reader is connected to.

Step 17:
 Click 'Save'.

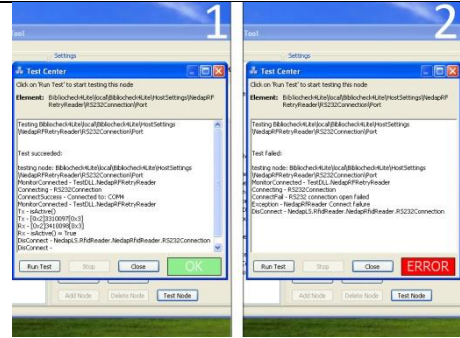
Step 18:
 Click 'Test Node'.



Step 19:
 Click 'Run Test'.



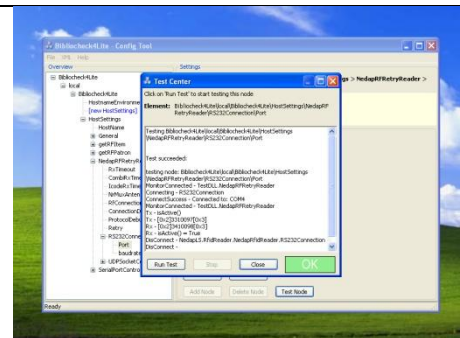
Step 20:
 If the right COM-Port is selected it will display the message: **'OK'**. [1]
 If the wrong COM-Port is selected it will display the message **'ERROR'**. [2]



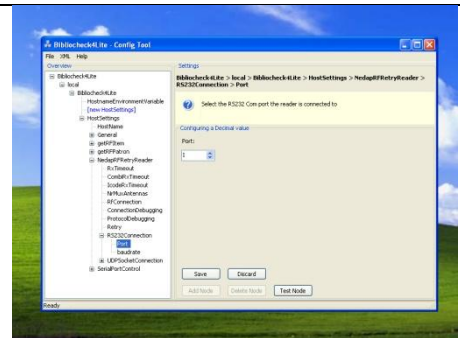
If an 'ERROR'-message occurs; repeat STEP 16 to 21 until the right COM-Port is selected.

Example:
 Switch from COM-Port 1 to COM-Port 2 (or COM-Port 2 to 3, etc) and test the connection again. Repeat this procedure until you get the green 'OK' as result. Then, proceed to STEP 21.

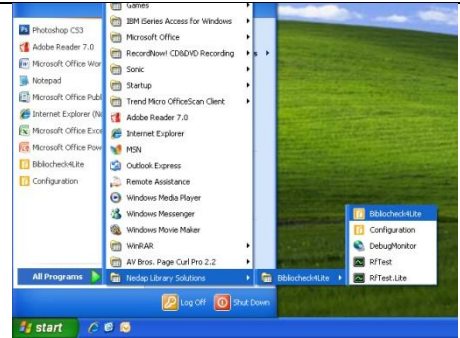
Step 21:
 Click 'Close'.

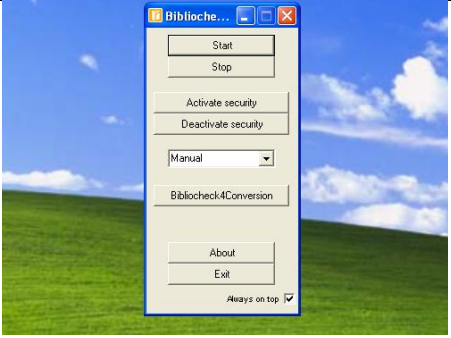
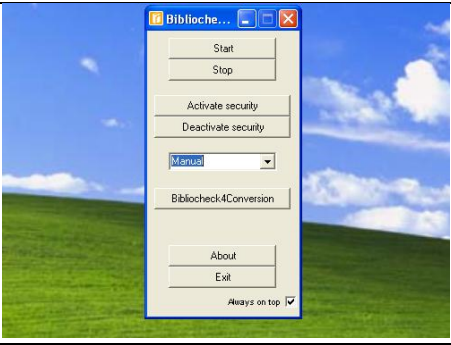
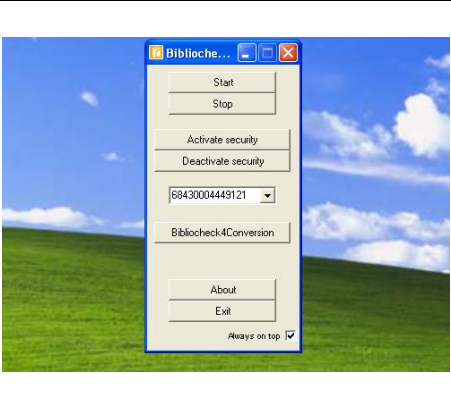


Step 22:
 Quit the configuration tool by pressing the 'X' in the upper-right corner.



Step 23:
 Go to: *Start > (All) Programs > Nedap Librix > Bibliocheck4Lite* and run 'Bibliocheck4Lite'.



<p>Step 24: Click <i>'Start'</i> so the reader starts the data-reading process. If activated, the Bibliocheck4Lite icon in the right-hand corner of the taskbar will turn yellow.</p>	
<p>Step 25: Click <i>'Manual'</i>. This way it will be selected as the screenshot (blue and selected) displays.</p> <p>Step 26: Scan a RFID-tag by placing it on the proximity-reader's antenna [A].</p>	
<p>Step 27: If the reader scans the RFID-tag successfully, a chain of numbers will be displayed. (the numbers will be shown where <i>'Manual'</i> was selected during the previous step).</p> <p>Step 28: Click <i>'Exit'</i>.</p> <p>The proximity reader is now installed, configured and ready for use.</p>	

2.2 CONTACT & SUPPORT

Want to know more about the solutions Nedap Librix has to offer?

Visit: www.nedaplibrix.com

In case of problems during the installation or use of the product; contact your local supplier.

CHAPTER 3: FREQUENTLY ASKED QUESTIONS

- 1. There is no serial-port located on the computer? What now?**

Order a serial-to-USB convertor. This convertor makes it possible for the proximity reader to communicate through a USB-port.
- 2. Help! ‘Run configuration’ wasn’t checked while installing Bibliocheck4Lite. I can’t find the configuration-tool anywhere.**

Go to: *Start* > *(All) Programs* > *Nedap Library Solutions* > *Bibliocheck4Lite* > *Configuration*.
- 3. It seems that I can’t get the connection between the proximity reader and the computer to work properly. What is going wrong?**

Make sure that you do not miss a COM-port while testing. Also, make sure you click the ‘*Save*’ button every time after switching COM-ports.
- 4. I’ve installed and configured the proximity reader following this Quick Installation Guide. Still, I can’t seem to find the software anywhere using my normal account.**

A) While installing the software, be sure to use an ‘administrator rights’-account.
B) Also, while installing, be sure to check the ‘Everyone’-box.
This way the software will be available for every account using the computer.
Reinstalling the software will solve this problem.

 1. Go to: *Start* > *Run*.
 2. Type: *“appwiz.cpl”* (without the quotes).
 3. Remove Bibliocheck4Lite.

Follow the **SOFTWARE INSTRUCTIONS** which are in this Quick Installation Guide.
- 5. I’ve installed and configured the proximity reader following this Quick Installation Guide. Still it isn’t performing well.**

Make sure the reader isn’t mounted under an table/desk which contains an metal frame. Metal causes the reader to not function properly.

CHAPTER 4. FCC AND IC DECLARATION

FCC for USA according to Part 15 with FCC ID: CGDPROX1356
IC for Canada according to RS-210 with IC: 1444A-PROX1356

Part 15.19(3) and RSS_Gen Labelling

This device complies with part 15 of the FCC Rules and to RSS210 of Industry Canada. Operating is subject to the following two conditions:

- (1) this device may not cause harmful interference, and
- (2) this device must accept any interference received, including interference that may cause undesired operation.

Cet appareil se conforme aux normes RSS 210 exemptés de license du Industry Canada. L'opération est soumis aux deux conditions suivantes :

- (1) cet appareil ne doit causer aucune interférence, et
- (2) cet appareil doit accepter n'importe quelle interférence, y inclus interférence qui peut causer une opération non pas voulu de cet appareil.

Warning (part15.21)

Changes or modifications not expressly approved by party responsible for compliance could void the user's authority to operate the equipment.

CHAPTER 5. DISCLAIMER

This information is furnished for guidance, and with no guarantee as to its accuracy or completeness; its publication conveys no license under any patent or other right, nor does the publisher assume liability for any consequence of its use; specifications and availability of goods mentioned in it are subject to change without notice; it is not to be reproduced in any way, in whole or in part, without the written consent of the publisher.

Nedap Librix
P.O. Box 102
NL-7140 AC Groenlo
The Netherlands