

# Photo report internal components

Inductive RFID Card Reader operating on 13.56MHz  
Brand: Nedap  
Model: PG45i

Author	RH
Date	15 February 2017
Status	final

**N.V. Nederlandsche Apparatenfabriek "Nedap"**  
Parallelweg 2  
7141 DC Groenlo  
The Netherlands

**Description of EUT**

Description of EUT	Inductive RFID Card Reader operating on 13.56MHz
Manufacturer	Nedap N.V.
Brand	Nedap
Model	PG45i
FCC ID	CGDPG45I135
IC	1444A-PG45I135
Type of service	New Application

**Applicant Information**

Applicant's representative	Mr. Reinold Hubers
Company	N.V. Nederlandsche Apparatenfabriek "Nedap"
Address	Parallelweg 2
Postal code	7141 DC
City	Groenlo
PO Box	6
Postal code	7140 AA
City	Groenlo
Country	The Netherlands
Telephone number	+31 (0) 544 471111
Telefax number	+31 (0) 544 463475

## 0. CONTENTS

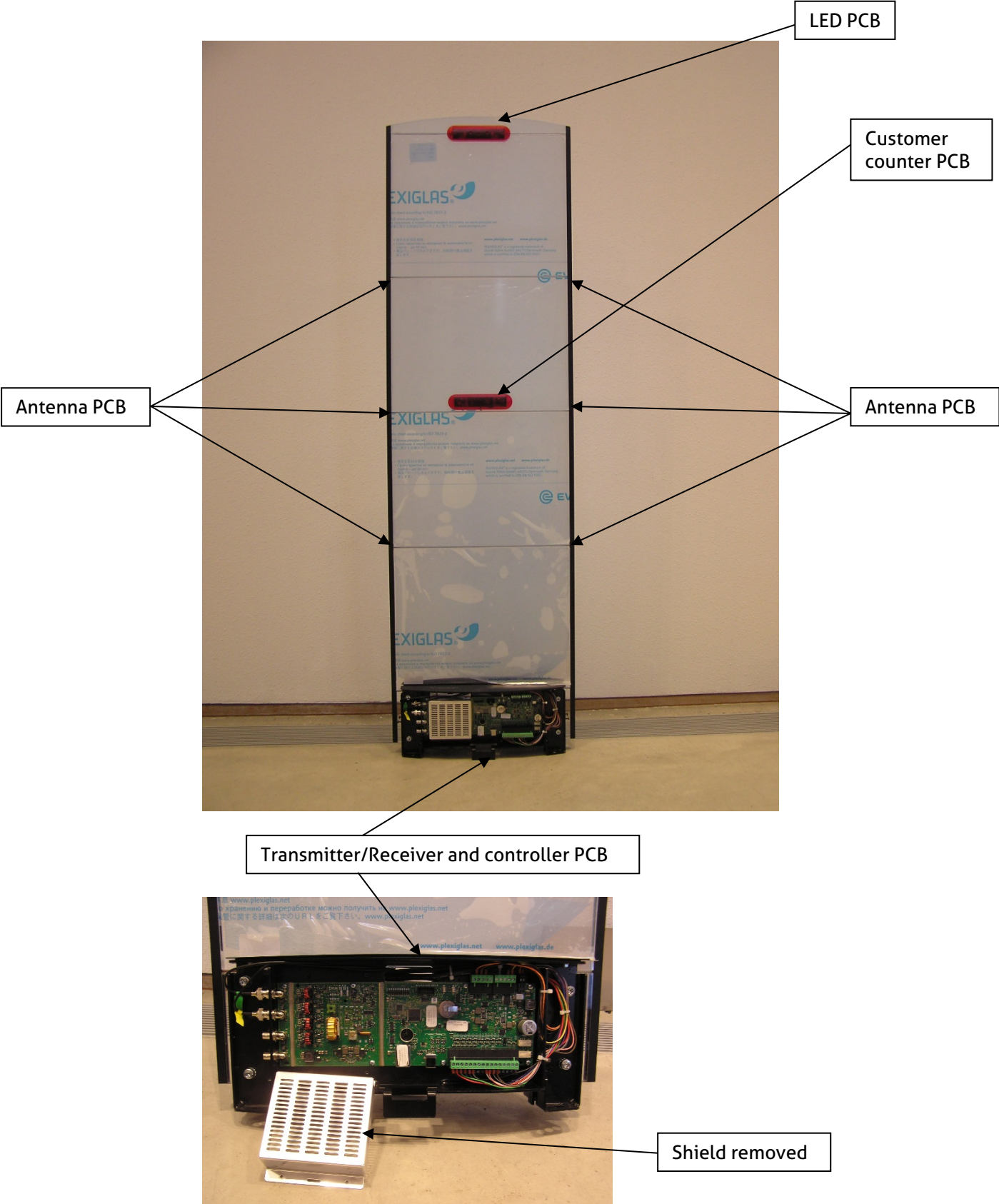
1. Overview PG45i	4
2. Internal photo overview	5
2.1. Front view	5
2.2. Back view	6
2.3. LED PCB	7
2.4. Customer counter PCB	7
2.5. Antenna PCB	8
3. Transmitter/receiver and controller PCB	9
3.1. Front view	9
3.1.1. Detail 1	9
3.1.2. Detail 2	10
3.2. Back view	10
4. Antenna matching PCB	11
4.1. Front view	11
4.2. Back view	11
5. LED PCB	12
5.1. Front view	12
5.2. Back view	12
6. Customer counter PCB	13
6.1. Front view	13
6.2. Back view	13

# 1. Overview PG45i



## 2. Internal photo overview

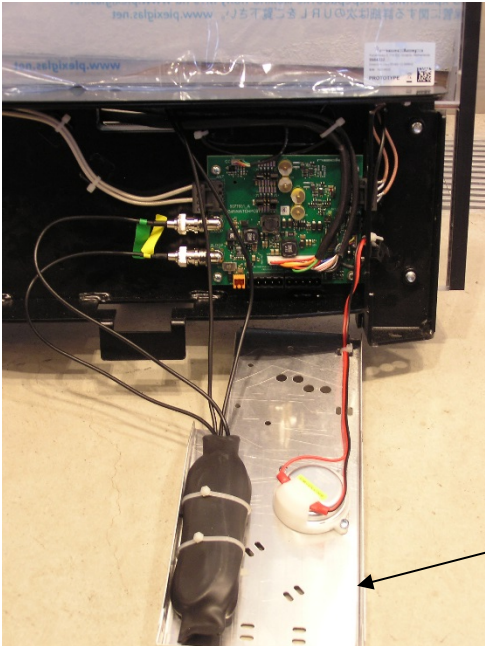
### 2.1. Front view



2.2. Back view



Antenna matching PCB  
With shield



Shield removed

### 2.3. LED PCB



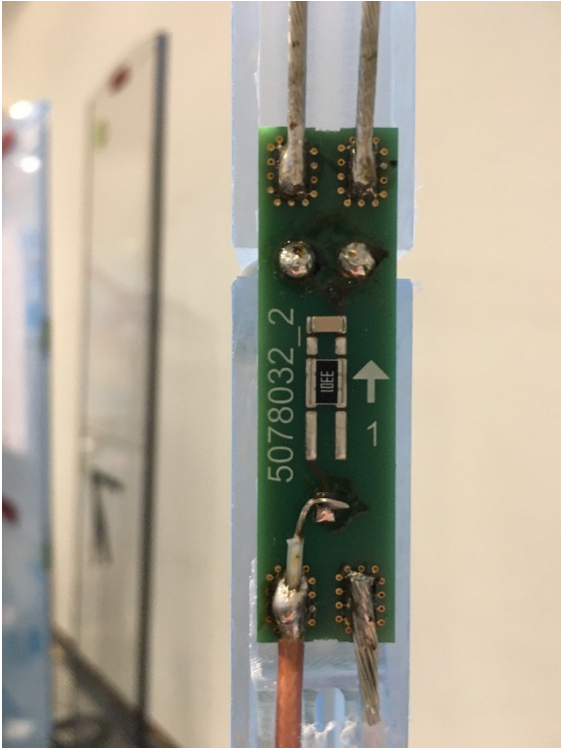
Transparent red cover removed

### 2.4. Customer counter PCB



Transparent red cover removed

2.5. Antenna PCB

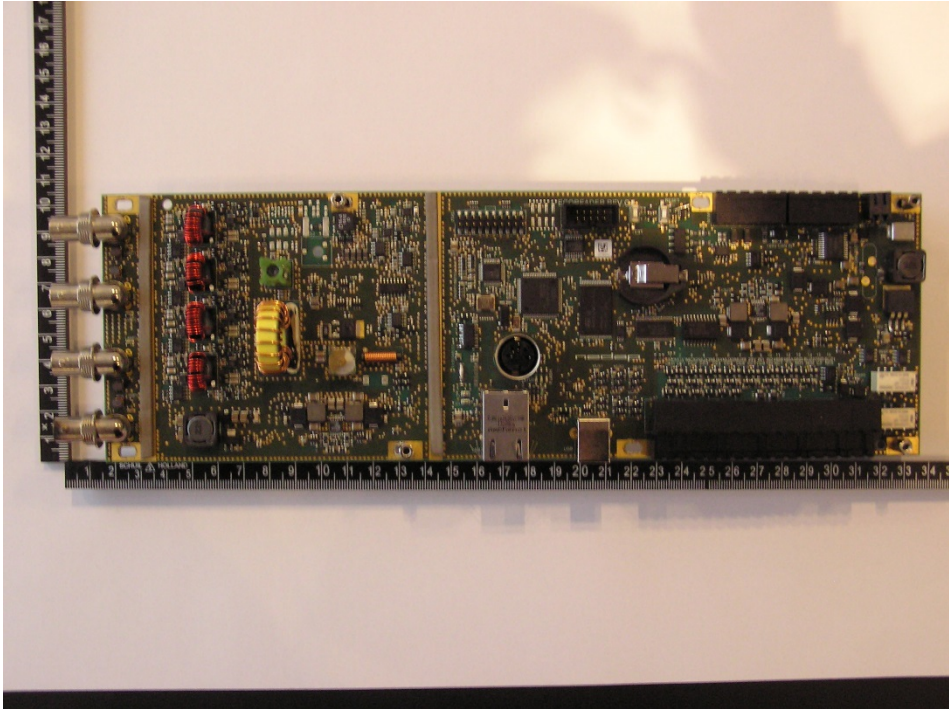


Antenna PCB (6 provided)



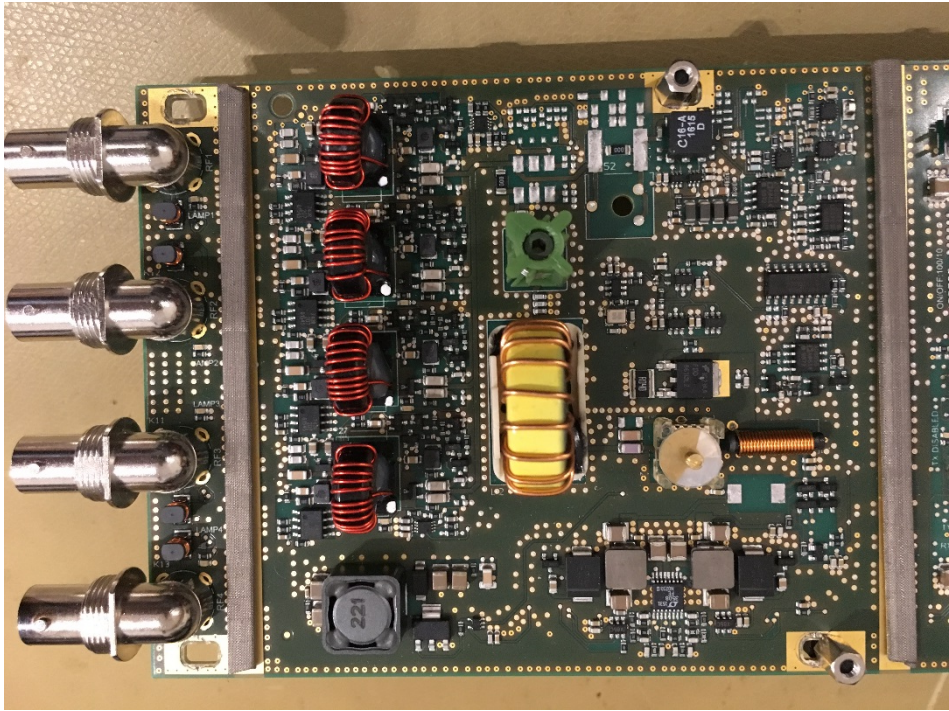
### 3. Transmitter/receiver and controller PCB

#### 3.1. Front view



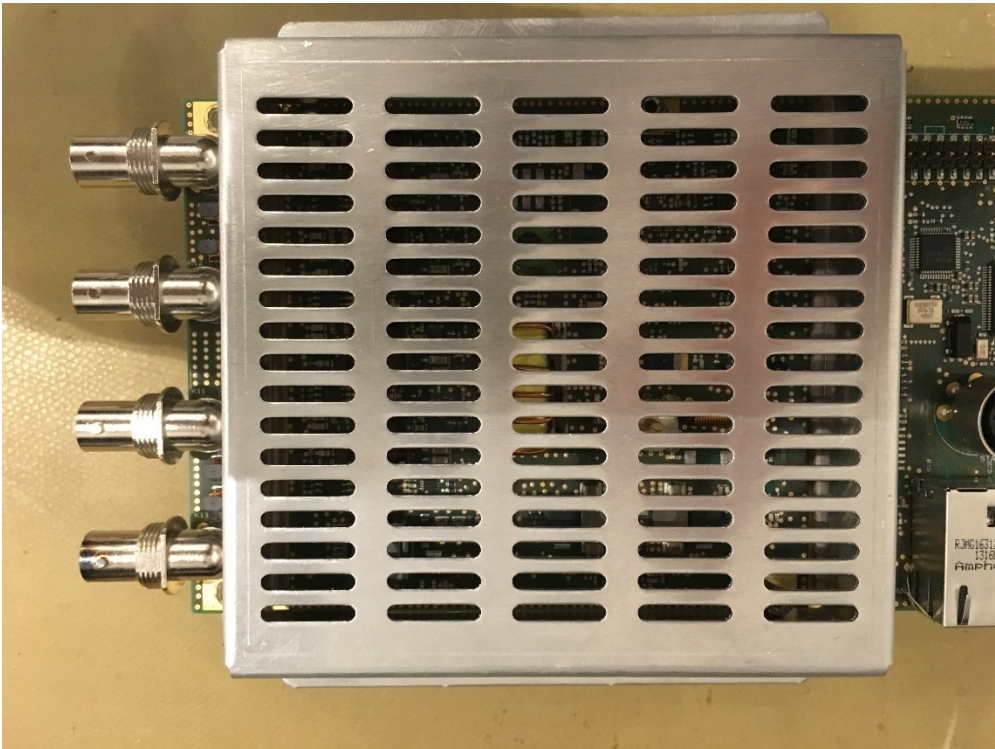
Shield removed

#### 3.1.1. Detail 1



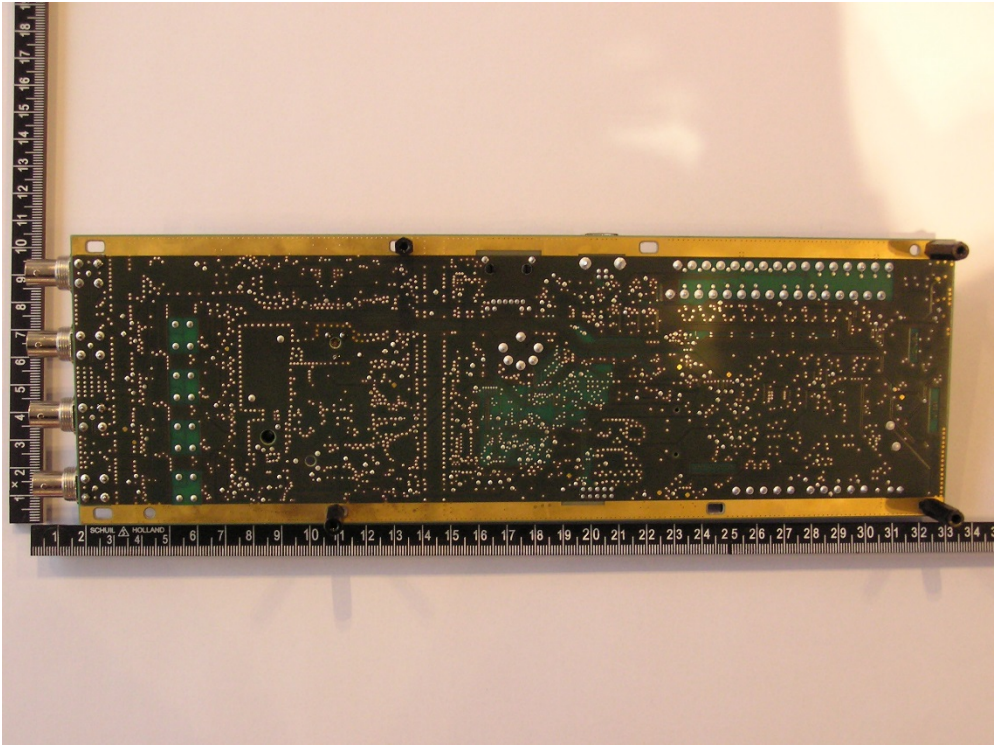
Shield removed

3.1.2. Detail 2



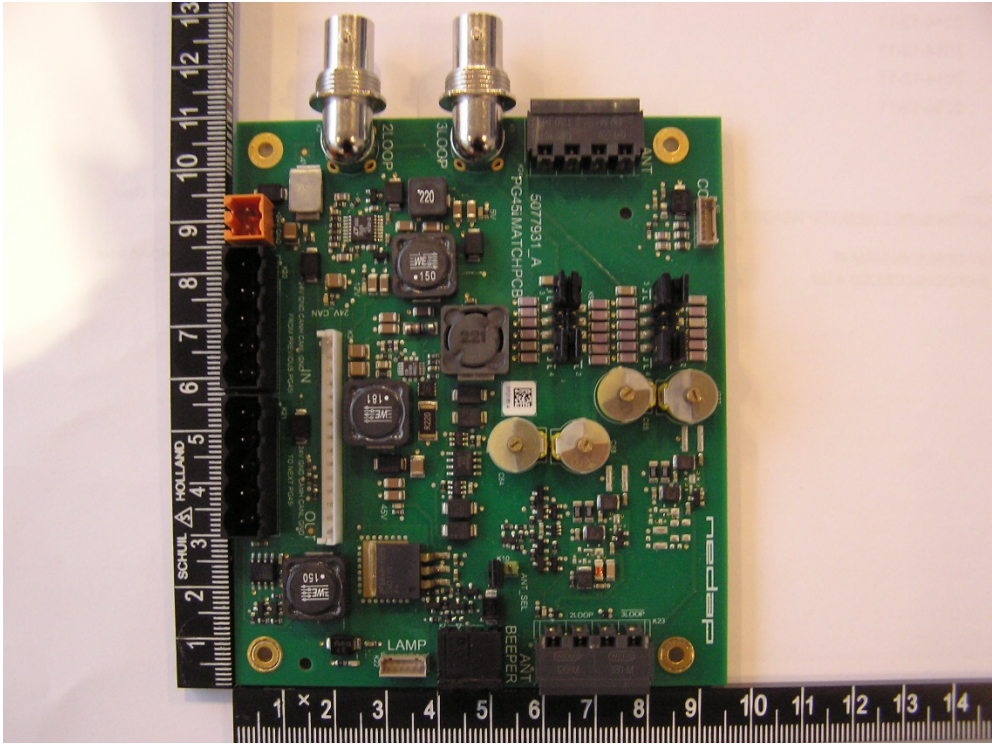
Shield installed

3.2. Back view

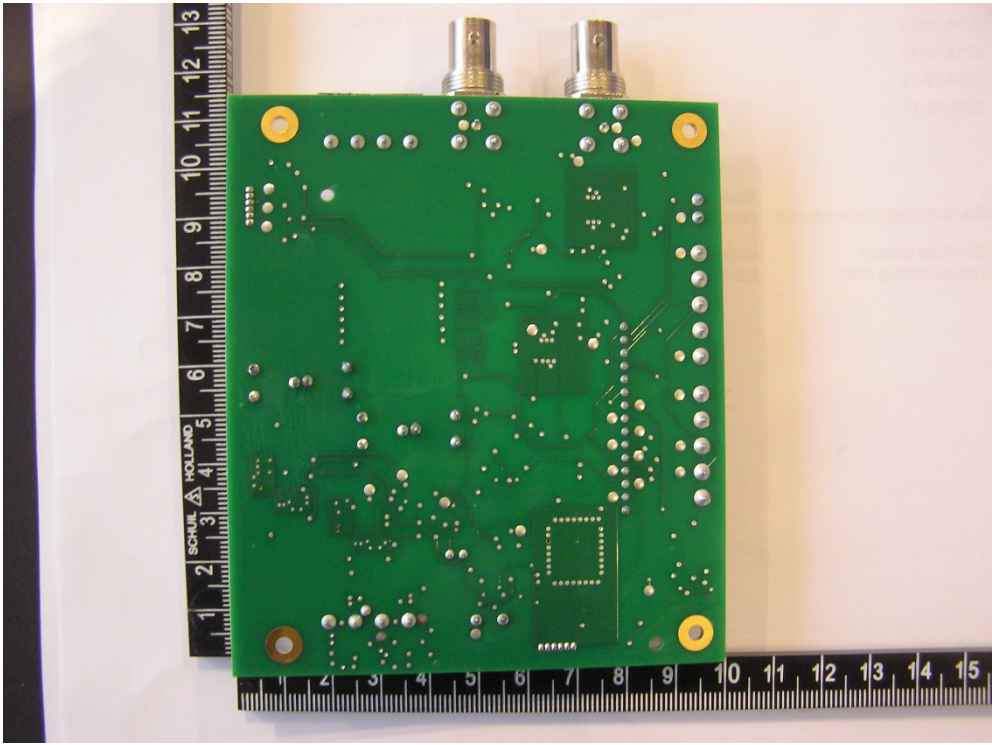


## 4. Antenna matching PCB

### 4.1. Front view

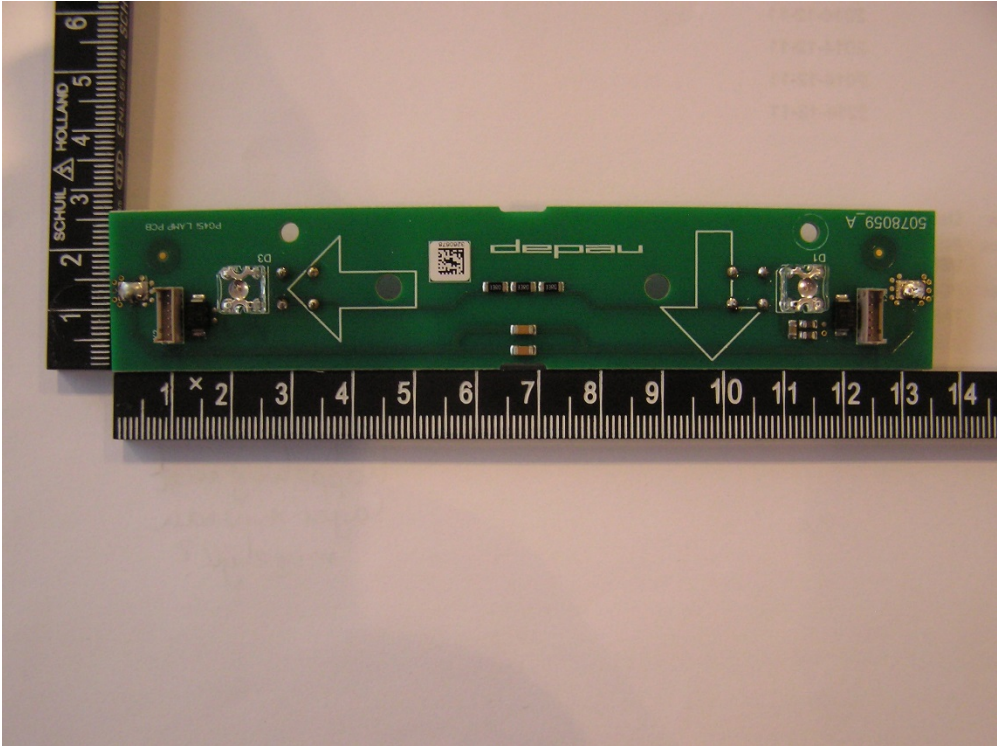


### 4.2. Back view

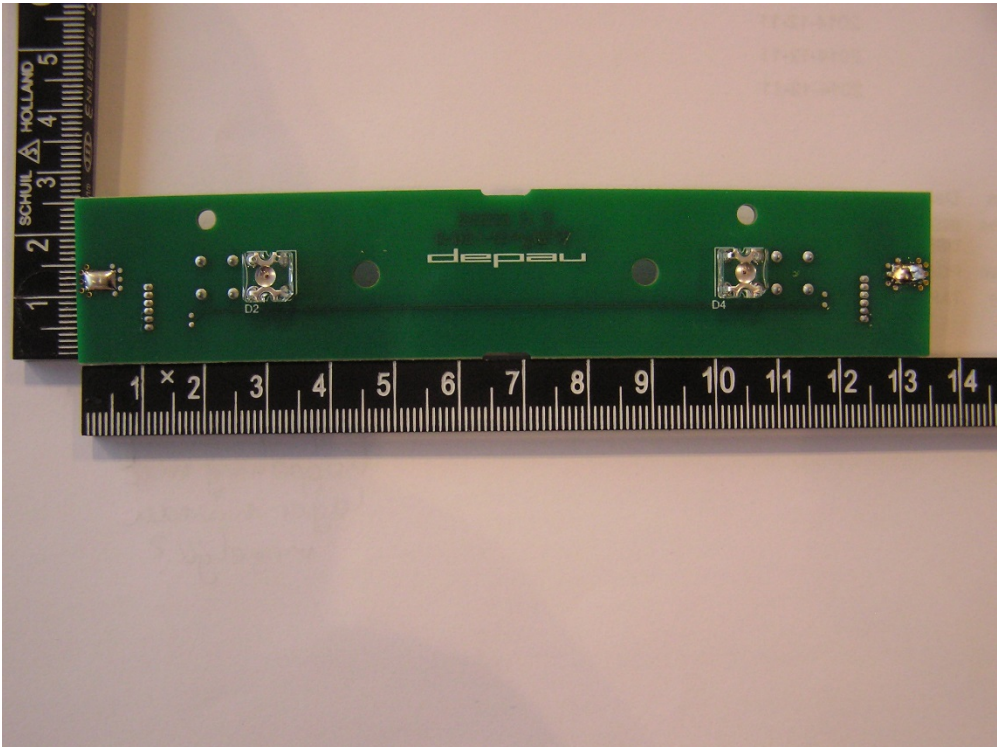


# 5. LED PCB

## 5.1. Front view

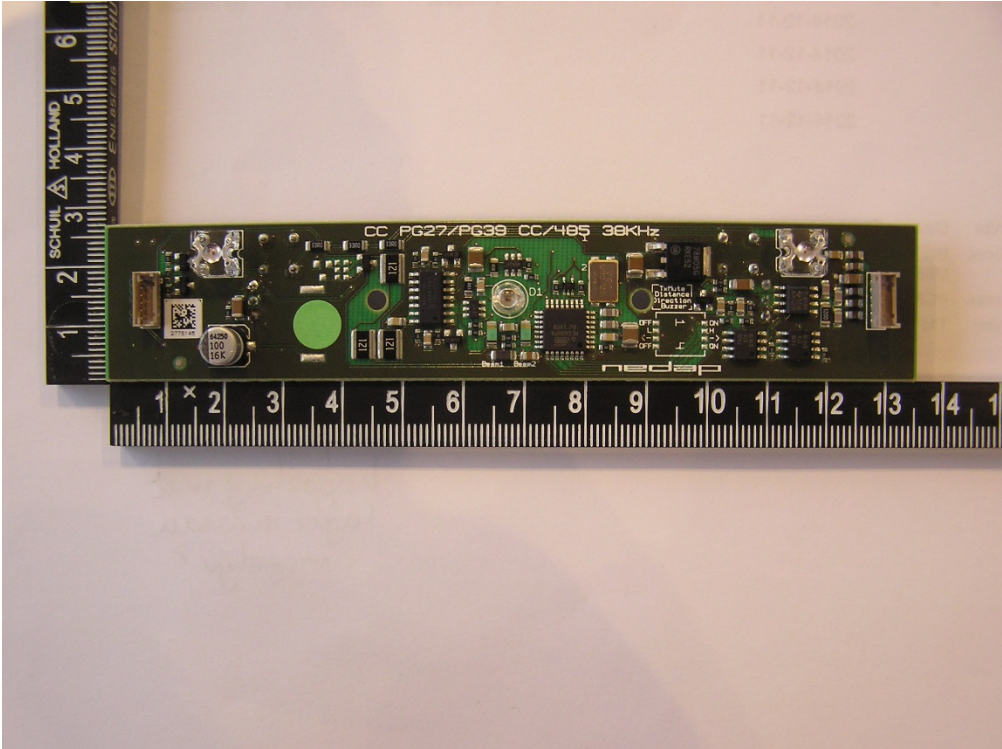


## 5.2. Back view



## 6. Customer counter PCB

### 6.1. Front view



### 6.2. Back view

