

Compnr.	alt. coor	aantal	artikel	wijz. tek.nr.	omschrijving
C0059		1	ST 2120461		CONDB 100N 0805 25V 10% X7R
C0060		1	ST 2096366		CONDB 10N 0805 63V 10% X7R
C0061		1	ST 2036061		CONDA 33P 0805 63V 5% NPO
C0062		1	ST 2040247		CONDA 47P 0805 63V 2% NPO
C0063		1	ST 2036061		CONDA 33P 0805 63V 5% NPO
C0066		1	ST 2044021		CONDA 68P 0805 63V 5% NPO
C0067		1	ST 2060124		CONDA 330P 0805 63V 5% NPO
C0068		1	ST 2032112		CONDA 22P 0805 63V 5% NPO
C0069		1	ST 2036061		CONDA 33P 0805 63V 5% NPO
C0070		1	ST 2036061		CONDA 33P 0805 63V 5% NPO
C0071		1	ST 2096366		CONDB 10N 0805 63V 10% X7R
C0072		1	ST 2200147	T0010-554	CONDC 220U ALU 35V 20% P046
C0073		1	ST 2024012		CONDA 10P 0805 63V 5% NPO
C0076		1	ST 2060116		CONDA 390P 0805 63V 2% NPO
C0077		1	ST 2080320		CONDB 2N2 0805 63V 10% X7R
C0078		1	ST 2080320		CONDB 2N2 0805 63V 10% X7R
C0079		1	ST 2120461		CONDB 100N 0805 25V 10% X7R
C0080		1	ST 2120461		CONDB 100N 0805 25V 10% X7R
C0081		1	ST 2120461		CONDB 100N 0805 25V 10% X7R
C0082		1	ST 1490028		WEERA 0E RC11 0,10W 5%
D0004		1	ST 2531496		DIODE ZE BZX84C5V6 5V6 0,3W 5%
D0005		1	ST 2500035		DIODE SI BAS16/Y 75V-250MA
D0006		1	ST 2531232		DIODE FR BAV99 75V 250MA SMD
D0007		1	ST 2531232		DIODE FR BAV99 75V 250MA SMD
D0009		1	ST 2531348		DIODE ZE BZX84C4V7 4V7 0,3W 5%
D0011		1	ST 2501376		DIODE SI 1N4007 1KV- 1A
D0014		1	ST 2500035		DIODE SI BAS16/Y 75V-250MA
IC002		1	ST 2721457		IC F CMOS 74HC4060 SMD 14ST CO
IC003		1	ST 2700697		IC E REG. ADJ.TL431ID SMD 0,1A
IC004		1	ST 2571196		IC E SI9942DY DUAL N-P FET SMD
IC005		1	ST 2801213		IC E MICRO-CONTR PIC16C73
IC006		1	ST 2802465		IC C EEPROM 256 BITS SERIEEL
IC008		1	ST 2742381		IC E OP AMP TLC272 DUAL SMD
IC009		1	ST 2743019		IC E OP AMP TLO82CD SO8
IC010		1	ST 2743019		IC E OP AMP TLO82CD SO8
IC011		1	ST 2742381		IC E OP AMP TLC272 DUAL SMD
IC012		1	ST 2801183		IC E OTA SINGLE LM3080
IC013		1	ST 2743019		IC E OP AMP TLO82CD SO8
IC014		1	ST 2742284		IC E COMPARATOR QUAD SMD LM339
IC015		1	ST 2722984		IC F CMOS 74HC86 QUAD EXOR SMD
IC016		1	ST 2723727		IC F CMOS 74HC163 4BIT CNT SMD
IC017		1	ST 2740028	T0020-023	IC E REGULATOR 05V 1,5A 7805
IC018		1	ST 2742373		IC E REGULATOR 12V SMD 78L12
K0002		1	ST 3601641	T0044-089	AANSLUITKL 2-P PCB WECO 970DS
L0003		1	ST 7655193		SPOELC 22U 10% 0.56A B78108S

Wijz. nr.	Index	Datum	Omschrijving van de wijziging	Get.:

nedap GROENLO HOLLAND	Ontw.:	d.d.:
	Get.:	d.d.:
	Gec.:	d.d.:

PRNT SAM MIMI FSK 134	Teknr.: T1250-510
-----------------------	-------------------

Compnr.	alt. coor	aantal	artikel	wijz. tek.nr.	omschrijving
L0004		1	ST 7661053		SPOELC 220U 5% 0.25A B78108S
L0005		1			AFREGELSPOEL MIMI
L0006		1			ANTENNE MIMI
L0007		1	ST 7660944		SPOELC 10U 10% 0.68A B78108S
L0008		1	ST 7660987		SPOELC 47U 5% 0.45A B78108S
L0009		1	ST 7655193		SPOELC 22U 10% 0.56A B78108S
L0010		1	ST 7653042	T0028-013	SPOEL 10UH 660MA SD75 5%
R0001		1	ST 1556142		WEERA 220E RC11 0,10W 5%
R0005		1	ST 1620215		WEERB 100K RC11 0,10W 5%
R0010		1	ST 1644076		WEERC 1M0 RC11 0,10W 5%
R0011		1	ST 1580191		WEERB 2K2 RC11 0,10W 5%
R0018		1	ST 1596390		WEERB 10K0 RC11 0,10W 5%
R0019		1	ST 1602136		WEERB 30K1 RC12H 0,125W 1%
R0021		1	ST 1616196		WEERB 49K9 RC12H 0,125W 1%
R0022		1	ST 1532103		WEERA 22E RC11 0,10W 5%
R0023		1	ST 1596390		WEERB 10K0 RC11 0,10W 5%
R0024		1	ST 1596390		WEERB 10K0 RC11 0,10W 5%
R0027		1	ST 1616196		WEERB 49K9 RC12H 0,125W 1%
R0028		1	ST 1596403		WEERB 10K00 RC12H 0,125W 1%
R0029		1	ST 1616196		WEERB 49K9 RC12H 0,125W 1%
R0030		1	ST 1602136		WEERB 30K1 RC12H 0,125W 1%
R0031		1	ST 1596390		WEERB 10K0 RC11 0,10W 5%
R0033		1	ST 1628089		WEERB 220K RC11 0,10W 5%
R0034		1	ST 1596390		WEERB 10K0 RC11 0,10W 5%
R0035		1	ST 1598074		WEERB 12K RC11 0,10W 5%
R0036		1	ST 1590138		WEERB 5K6 RC11 0,10W 5%
R0037		1	ST 1668056		WEERC 10M RC11 0,10W 5%
R0038		1	ST 1612093		WEERB 47K RC11 0,10W 5%
R0039		1	ST 1580191		WEERB 2K2 RC11 0,10W 5%
R0040		1	ST 1604058		WEERB 22K RC11 0,10W 5%
R0041		1	ST 1596390		WEERB 10K0 RC11 0,10W 5%
R0042		1	ST 1596390		WEERB 10K0 RC11 0,10W 5%
R0043		1	ST 1602063		WEERB 18K RC11 0,10W 5%
R0044		1	ST 1606042		WEERB 27K RC11 0,10W 5%
R0045		1	ST 1596403		WEERB 10K00 RC12H 0,125W 1%
R0046		1	ST 1590138		WEERB 5K6 RC11 0,10W 5%
R0047		1	ST 1610104		WEERB 39K RC11 0,10W 5%
R0048		1	ST 1596403		WEERB 10K00 RC12H 0,125W 1%
R0049		1	ST 1602063		WEERB 18K RC11 0,10W 5%
R0050		1	ST 1596403		WEERB 10K00 RC12H 0,125W 1%
R0051		1	ST 1606042		WEERB 27K RC11 0,10W 5%
R0052		1	ST 1584090		WEERB 3K3 RC11 0,10W 5%
R0053		1	ST 1596403		WEERB 10K00 RC12H 0,125W 1%
R0054		1	ST 1596390		WEERB 10K0 RC11 0,10W 5%
R0055		1	ST 1644076		WEERC 1M0 RC11 0,10W 5%

Wijz. nr.	Index	Datum	Omschrijving van de wijziging	Get.:

nedap GROENLO HOLLAND	Ortw.:	d.d.:
	Get.:	d.d.:
	Gec.:	d.d.:

PRNT SAM MIMI FSK 134	Teknr.: T1250-510
-----------------------	-------------------

Compnr.	alt. coor	aantal	artikel	wijz. tek.nr.	omschrijving
R0056		1 ST	1632019		WEERB 330K RC11 0,10W 5%
R0057		1 ST	1588176		WEERB 4K7 RC11 0,10W 5%
R0058		1 ST	1596390		WEERB 10K0 RC11 0,10W 5%
R0059		1 ST	1590138		WEERB 5K6 RC11 0,10W 5%
R0060		1 ST	1600168		WEERB 15K RC11 0,10W 5%
R0061		1 ST	1598074		WEERB 12K RC11 0,10W 5%
R0062		1 ST	1584090		WEERB 3K3 RC11 0,10W 5%
R0063		1 ST	1644076		WEERC 1M0 RC11 0,10W 5%
R0064		1 ST	1584090		WEERB 3K3 RC11 0,10W 5%
R0065		1 ST	1596390		WEERB 10K0 RC11 0,10W 5%
R0066		1 ST	1548204		WEERA 100E RC11 0,10W 5%
R0067		1 ST	1644076		WEERC 1M0 RC11 0,10W 5%
R0068		1 ST	1580191		WEERB 2K2 RC11 0,10W 5%
R0069		1 ST	1596390		WEERB 10K0 RC11 0,10W 5%
R0070		1 ST	1584090		WEERB 3K3 RC11 0,10W 5%
R0071		1 ST	1606042		WEERB 27K RC11 0,10W 5%
R0072		1 ST	1608100		WEERB 33K RC11 0,10W 5%
R0073		1 ST	1596390		WEERB 10K0 RC11 0,10W 5%
R0074		1 ST	1572296		WEERB 1K0 RC11 0,10W 5%
R0075		1 ST	1628089		WEERB 220K RC11 0,10W 5%
R0076		1 ST	1644076		WEERC 1M0 RC11 0,10W 5%
R0077		1 ST	1604058		WEERB 22K RC11 0,10W 5%
R0078		1 ST	1604058		WEERB 22K RC11 0,10W 5%
R0079		1 ST	1600168		WEERB 15K RC11 0,10W 5%
R0080		1 ST	1572296		WEERB 1K0 RC11 0,10W 5%
R0081		1 ST	1572296		WEERB 1K0 RC11 0,10W 5%
R0082		1 ST	1604058		WEERB 22K RC11 0,10W 5%
R0083		1 ST	1644076		WEERC 1M0 RC11 0,10W 5%
R0084		1 ST	1628089		WEERB 220K RC11 0,10W 5%
R0085		1 ST	1622137		WEERB 120K RC11 0,10W 5%
R0086		1 ST	1644076		WEERC 1M0 RC11 0,10W 5%
R0087		1 ST	1602136		WEERB 30K1 RC12H 0,125W 1%
R0088		1 ST	1572385		WEERB 1K30 RC12H 0,125W 1%
R0089		1 ST	1576119		WEERB 2K00 RC12H 0,125W 1%
R0090		1 ST	1602136		WEERB 30K1 RC12H 0,125W 1%
R0091		1 ST	1604058		WEERB 22K RC11 0,10W 5%
R0092		1 ST	1612093		WEERB 47K RC11 0,10W 5%
R0093		1 ST	1572296		WEERB 1K0 RC11 0,10W 5%
R0094		1 ST	1596403		WEERB 10K00 RC12H 0,125W 1%
R0095		1 ST	1596390		WEERB 10K0 RC11 0,10W 5%
R0098		1 ST	1580191		WEERB 2K2 RC11 0,10W 5%
R0099		1 ST	1490028		WEERA 0E RC11 0,10W 5%
R0100		1 ST	1588176		WEERB 4K7 RC11 0,10W 5%
R0101		1 ST	1644076		WEERC 1M0 RC11 0,10W 5%
R0102		1 ST	1588176		WEERB 4K7 RC11 0,10W 5%


Wijz. nr.	Index	Datum	Omschrijving van de wijziging	Get.:

nedap GROENLO HOLLAND	Ontw.:	d.d.:
	Get.:	d.d.:
	Gec.:	d.d.:

PRNT SAM MIMI FSK 134	Teknr.: T1250-510
-----------------------	-------------------

Compnr.	alt. coor	aantal	artikel	wijz. tek.nr.	omschrijving
R0103		1 ST	1576046		WEERB 1K5 RC11 0,10W 5%
R0104		1 ST	1560140		WEERA 330E RC11 0,10W 5%
R0105		1 ST	1576046		WEERB 1K5 RC11 0,10W 5%
R0106		1 ST	1576046		WEERB 1K5 RC11 0,10W 5%
R0107		1 ST	1596390		WEERB 10K0 RC11 0,10W 5%
R0108		1 ST	1628089		WEERB 220K RC11 0,10W 5%
R0109		1 ST	1588176		WEERB 4K7 RC11 0,10W 5%
R0110		1 ST	1640046		WEERB 680K RC11 0,10W 5%
R0111		1 ST	1588176		WEERB 4K7 RC11 0,10W 5%
R0112		1 ST	1628089		WEERB 220K RC11 0,10W 5%
R0113		1 ST	1588176		WEERB 4K7 RC11 0,10W 5%
R0114		1 ST	1540122		WEERA 47E RC11 0,10W 5%
R0115		1 ST	1572296		WEERB 1K0 RC11 0,10W 5%
R0116		1 ST	1564137		WEERA 470E RC11 0,10W 5%
R0117		1 ST	1596390		WEERB 10K0 RC11 0,10W 5%
R0118		1 ST	1588176		WEERB 4K7 RC11 0,10W 5%
R0119		1 ST	1602063		WEERB 18K RC11 0,10W 5%
R0120		1 ST	1580191		WEERB 2K2 RC11 0,10W 5%
R0121		1 ST	1576046		WEERB 1K5 RC11 0,10W 5%
R0122		1 ST	1576046		WEERB 1K5 RC11 0,10W 5%
R0123		1 ST	1604058		WEERB 22K RC11 0,10W 5%
R0124		1 ST	1628089		WEERB 220K RC11 0,10W 5%
R0129		1 ST	1490028		WEERA 0E RC11 0,10W 5%
T0001		1 ST	2550261		TRANSISTOR BC857B SMD PNP
T0002		1 ST	2550261		TRANSISTOR BC857B SMD PNP
T0003		1 ST	2550571		TRANSISTOR BCX56 SMD NPN
T0005		1 ST	2550270		TRANSISTOR BC847B SMD NPN
T0010		1 ST	2550709		TRANSISTOR BCX53 SMD PNP
T0011		1 ST	2550270		TRANSISTOR BC847B SMD NPN
T0012		1 ST	2550270		TRANSISTOR BC847B SMD NPN
T0013		1 ST	2550270		TRANSISTOR BC847B SMD NPN
T0014		1 ST	2550261		TRANSISTOR BC857B SMD PNP
T0015		1 ST	2550261		TRANSISTOR BC857B SMD PNP
T0016		1 ST	2550270		TRANSISTOR BC847B SMD NPN
T0017		1 ST	2550270		TRANSISTOR BC847B SMD NPN
T0018		1 ST	2550261		TRANSISTOR BC857B SMD PNP
T0019		1 ST	2550261		TRANSISTOR BC857B SMD PNP
T0020		1 ST	2550270		TRANSISTOR BC847B SMD NPN
T0023		1 ST	2550261		TRANSISTOR BC857B SMD PNP
T0025		1 ST	2550270		TRANSISTOR BC847B SMD NPN
T0026		1 ST	2650576		TRANSISTOR BFS19 260 MHZ SMD
T0027		1 ST	2550261		TRANSISTOR BC857B SMD PNP
T0028		1 ST	2650576		TRANSISTOR BFS19 260 MHZ SMD
T0029		1 ST	2550261		TRANSISTOR BC857B SMD PNP
T0030		1 ST	2550261		TRANSISTOR BC857B SMD PNP

Wijz. nr.	Index	Datum	Omschrijving van de wijziging	Get.:

 GROENLO HOLLAND	Ontw. :	d.d. :
	Get. :	d.d. :
	Gec. :	d.d. :

PRNT SAM MIMI FSK 134	Teknr.: T1250-510
-----------------------	-------------------

Dit document is het eigendom van de N.V. Nederlandsche Apparatenfabriek

Compnr.	alt. coor	aantal	artikel	wijz. tek.nr.	omschrijving
T0031		1 ST	2550261		TRANSISTOR BC857B SMD PNP
X0001		200 MS	5061326	T1250-511	PRNT KRT MIMI TOTAAL
X0002		1 ST	2681072		RESONATOR 9,83 MHZ KER CST9,83
X0003		1 ST	5467489		IC VOET 28-PINS (SMAL;7.62MM)
Y0001		1 ST	2681021		KRISTAL 4,2944 MHZ
*** ----- E I N D E ----- ***					

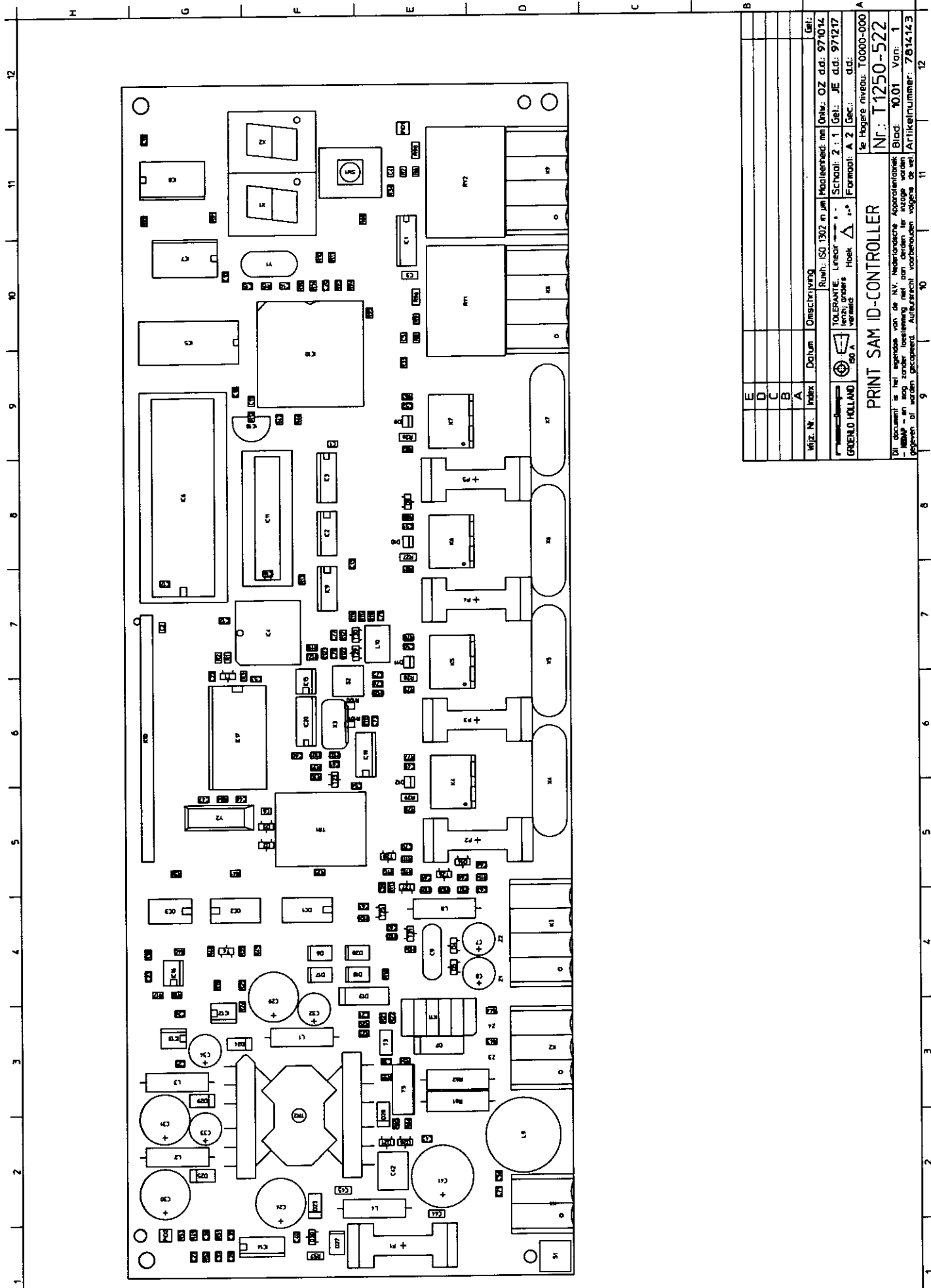
Wijz. nr.	Index	Datum	Omschrijving van de wijziging	Get.:

nedap
GROENLO HOLLAND

Ontw.: d.d.:
Get. : d.d.:
Gec. : d.d.:

PRNT SAM MIMI FSK 134

Teknr.: T1250-510



Wt.z. N.	Index	Datum	Omschrijving	Ruwb. ISO 1902 in jml	Maatleenscd. mm	Orde. OZ d.d.	971014
E	D			TOLEPANTE. Linnor	SCHOOI: 2 : 1	Gel. JE	d.d. 971217
D	C			1erh) grobes	Hoek Δ	Formaat: A 2	d.d.
C	B						
B	A						
A							
PRINT SAM ID-CONTROLLER				te Hogere niveau: T0000-000			
				Nr.: T1250-522			
				De document is het eigenaard van de N.V. Nederlandse Apparatenfabrik			
				- Niemand is aan mag zonder toestemming met het te kopiëren of te verspreiden			
				Blaad: 1001 Van: 1			
				Artikelnummer: 7814143			