

**PHOTOGRAPHS OF THE INTERIOR OF A**

**BRAND Nedap,  
MODEL Luxon bridge**

**TÜV Rheinland Nederland B.V.**  
Eiberkamp 10  
9351VT Leek  
The Netherlands

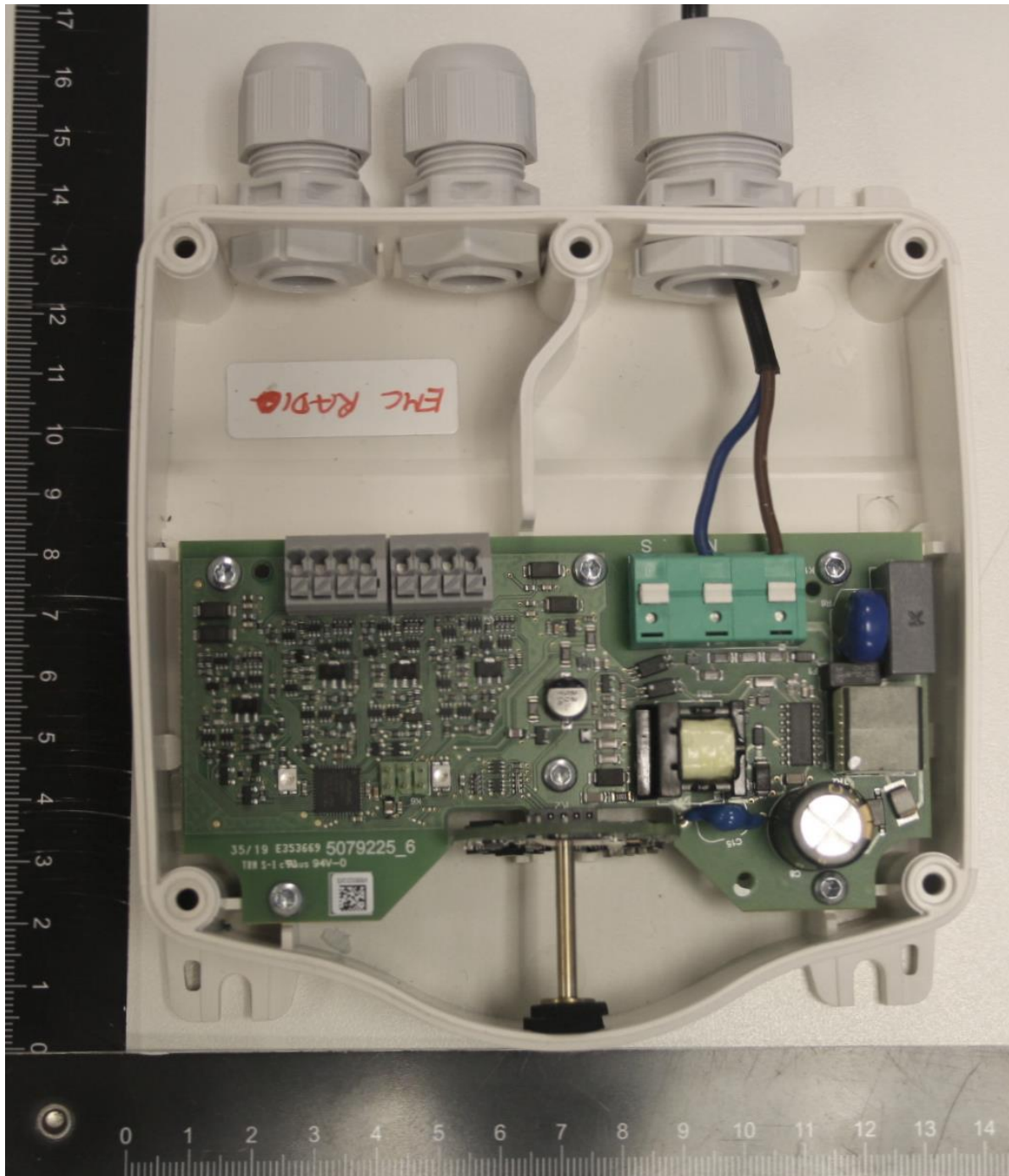
Telephone: +31888887888

Internet: [www.tuv.com/nl](http://www.tuv.com/nl)  
E-mail: [products@nl.tuv.com](mailto:products@nl.tuv.com)

## **Table of contents**

1.1	INTERNAL VIEW 1, TOP COVER REMOVED.....	3
1.2	INTERNAL VIEW 2, RF PCB ASSEMBLY REMOVED FROM THE UNIT.....	4
1.3	INTERNAL VIEW 2, RF PCB SIDE VIEW .....	5
1.4	RF PCB VIEW, TOP SIDE. ....	6
1.5	RF PCB VIEW - REAR SIDE .....	7

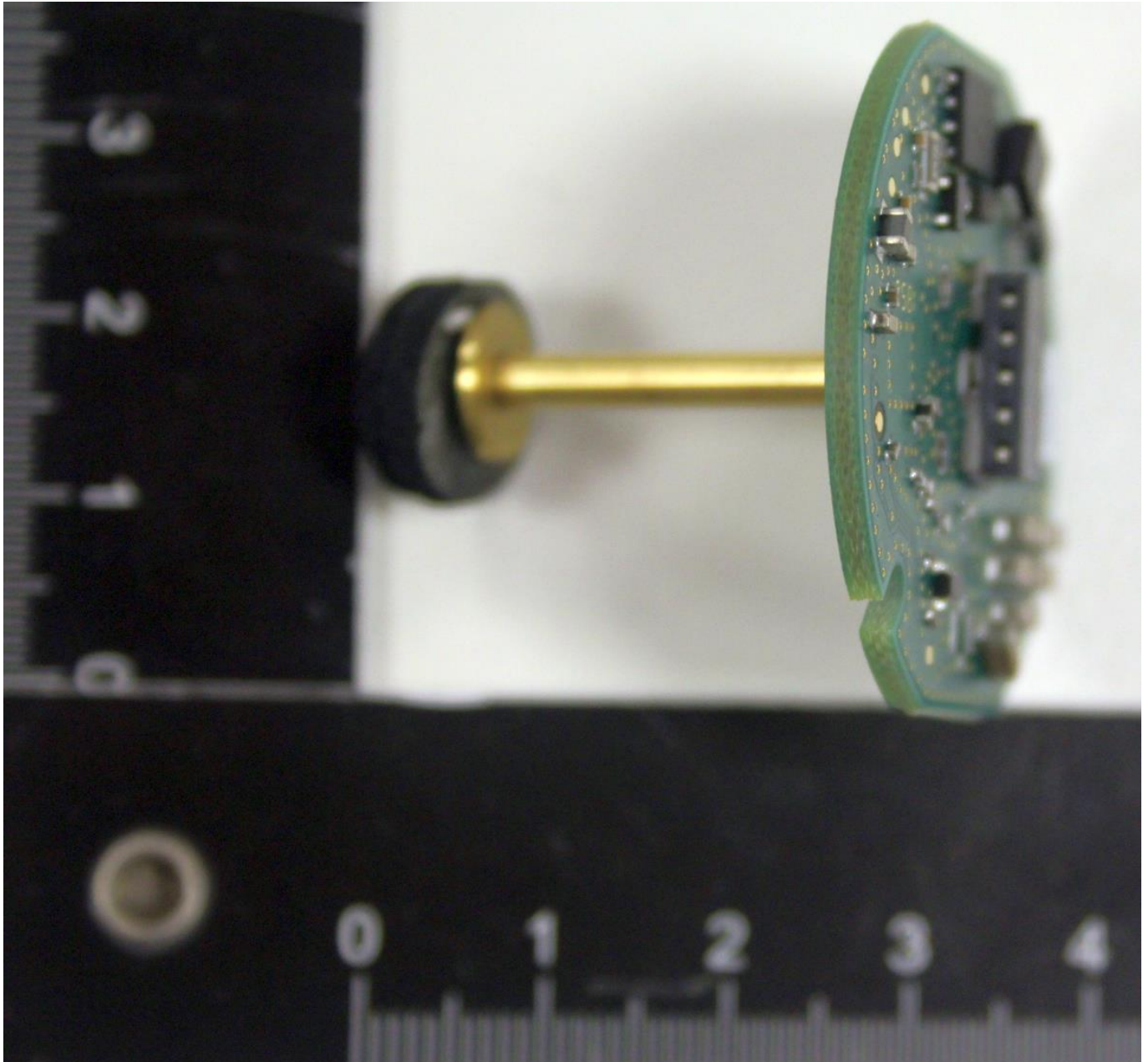
1.1 Internal view 1, top cover removed



**1.2 Internal view 2, RF PCB assembly removed from the unit**

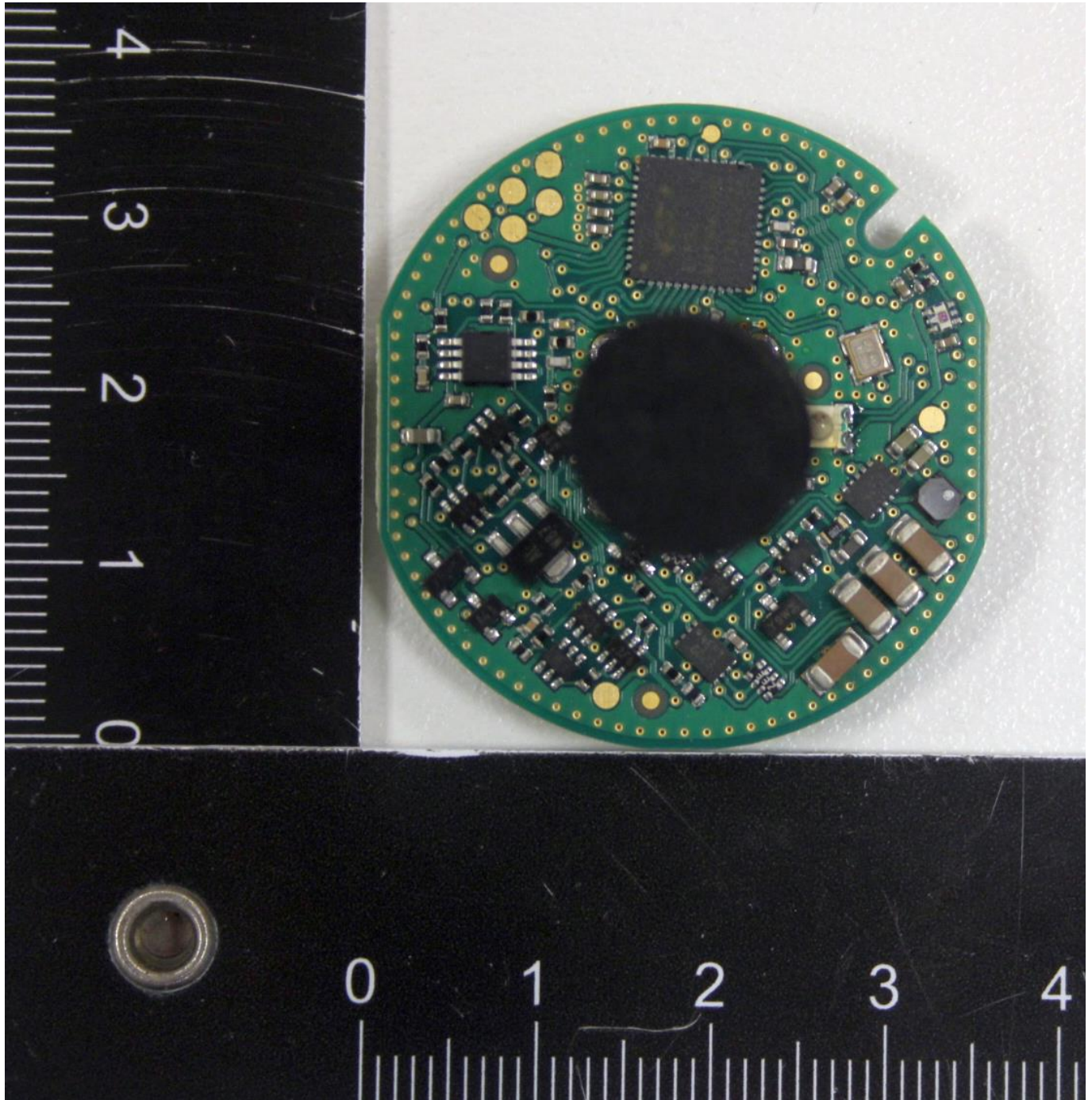


**1.3 Internal view 2, RF PCB side view**

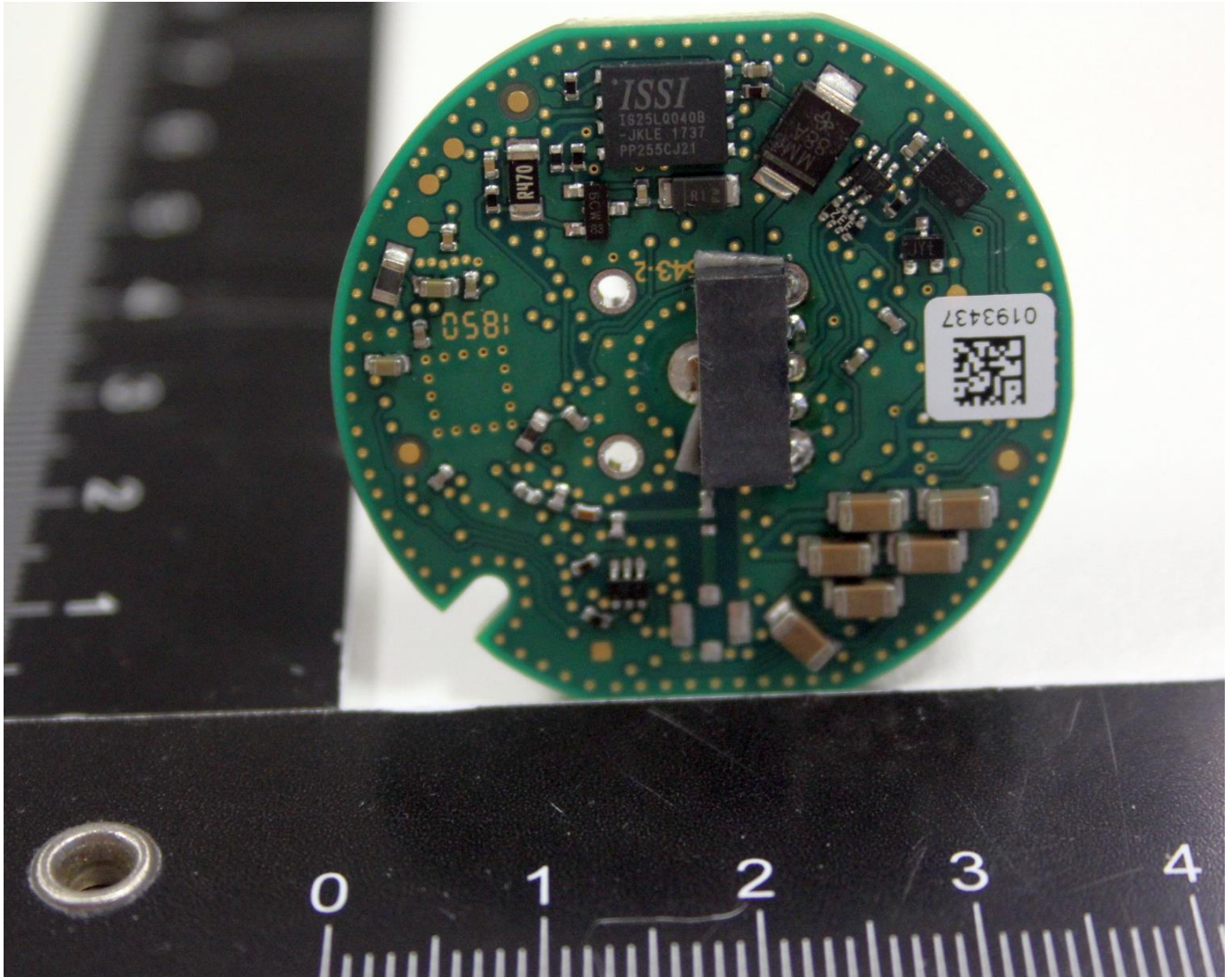




1.4 RF PCB view, top side.



1.5 RF PCB view - Rear side



END OF REPORT