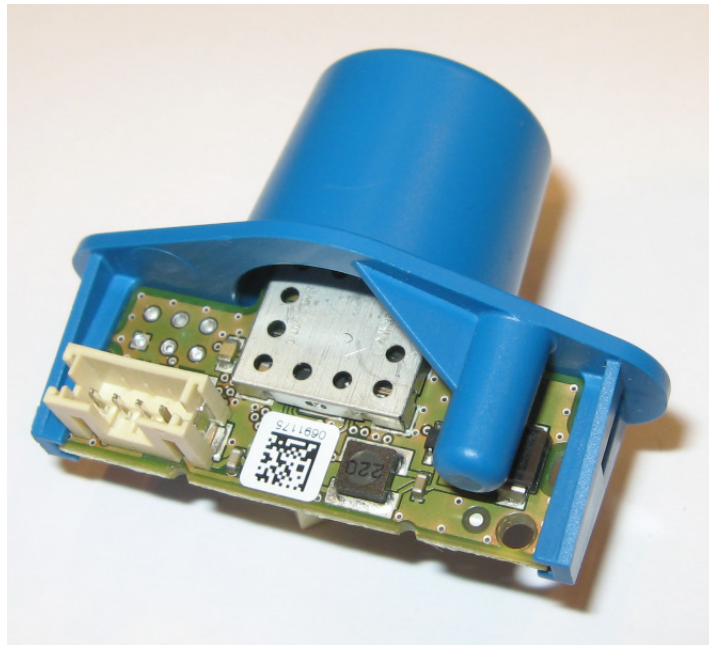


Installation Manual

Luxon Wireless 245A



L. Hones
11 August 2013

1. Brief product description

The Luxon Wireless 245A can be added to a fixture equipped with a Luxon e-HID ballast. It facilitates wireless communication between the electronic ballast and the Luxon Light Controller (LLC). After installation the Luxon Wireless 245A becomes a RF node in the network, and data can be transferred wirelessly to and from the light controller.

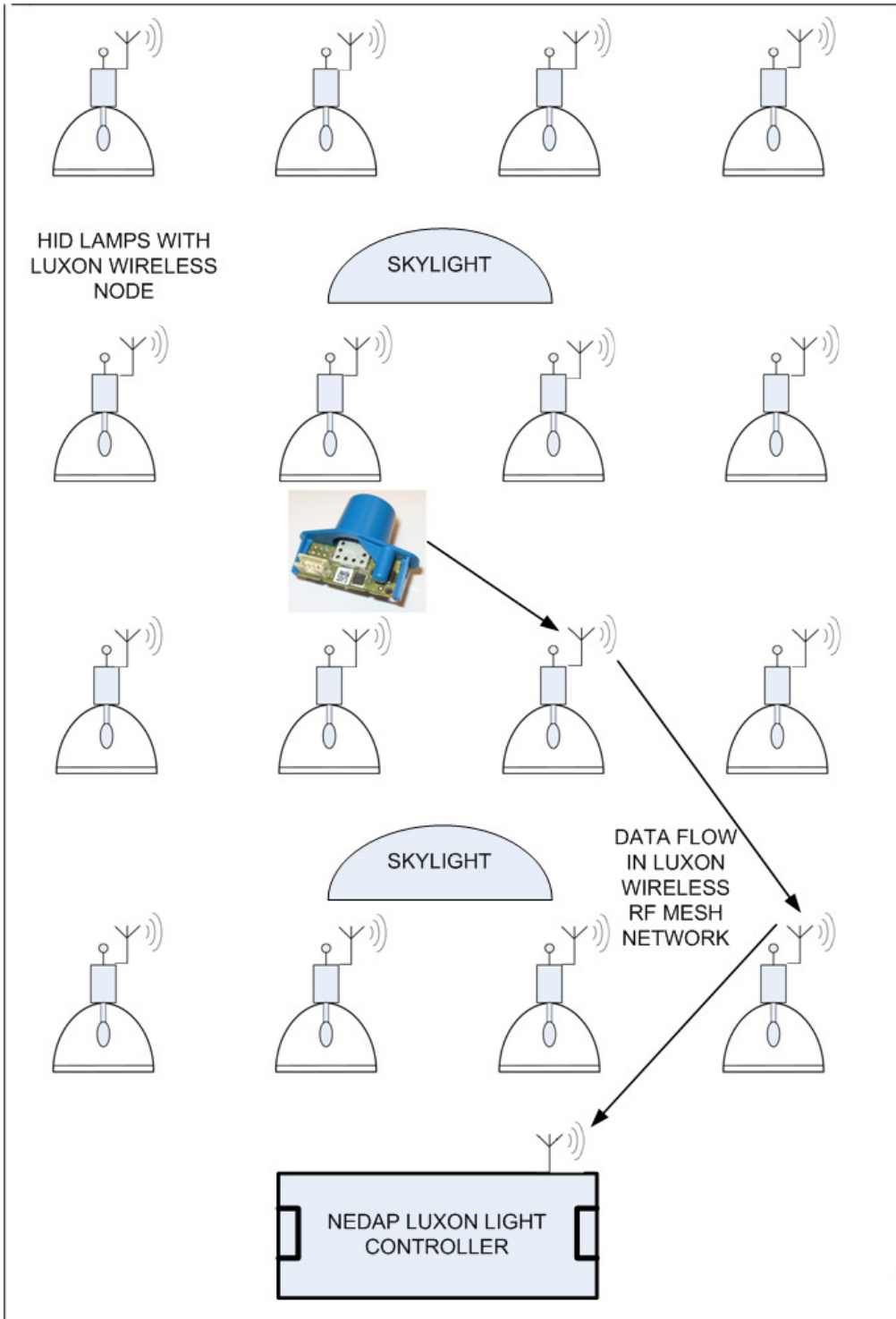


Figure 1. Installation example with Luxon Wireless HID lamps in a building with skylights

2. Product description



Figure 2: LW245A module



Figure 3: mounting hardware

The Luxon Wireless 245A comes mounted into a protective plastic enclosure. The cable is plugged into the module as shown in Figure 2. This cable is used for both powering the module and the wired communication with the ballast. Avoid disconnecting the quite fragile cable connector from the module.

The black connector is a 4 pole female connector with polarisation and locking, for use with specific series of Luxon e-HID ballasts. The module comes with 2 Torx T10 bolts and a protective sealing, see Fig 3.

3. Warnings

Always disconnect the ballast from mains power prior to connecting the Luxon Wireless 245A.

After making the connection to the Luxon ballast and powering up, the electronic circuits on the Luxon Wireless 245A module carry life voltage. It must be made impossible to end users touching the life parts. Sufficient creepage distance must be kept towards other conductors and enclosure parts. The enclosure is designed to comply with safety standards.

The Luxon Wireless 245A module may only be installed by qualified and trained personnel.

4. Mounting instructions

The Luxon Wireless 245A module must be mounted to the outside of the luminaire, to let the RF transceiver have the best possible unobstructed line of sight to other Luxon Wireless nodes. For best performance let the transceiver have a 360 degree field of sight. See also the Figure 4.

The module requires a 23mm diameter hole to pop through, together with two 3mm holes for the screws with 30mm spacing, see also Figure 5. The mounting area shall be flat. The provided two self tapping screws shall be used to secure the module. The sealing can be used if IP65 ingress protection is required.



Figure 4: Sample application

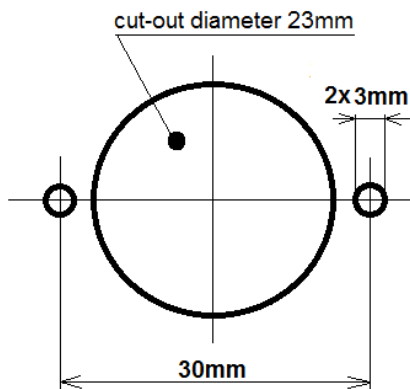


Figure 5: enclosure cut-out dimensions

5. Connecting

The cable is used to make a connection with the ballast. The black connector has provisions for both polarization and locking. Please insert it carefully into the counterpart on the ballast. See also Figure 6. Note that it might be necessary to remove a small protection cover from the ballast that is located over the connector.

Please note that the cable to the ballast shall be kept away from the lamp output cable to minimize electrical interference. See also Figure 7.



Figure 6: connection to ballast (example)

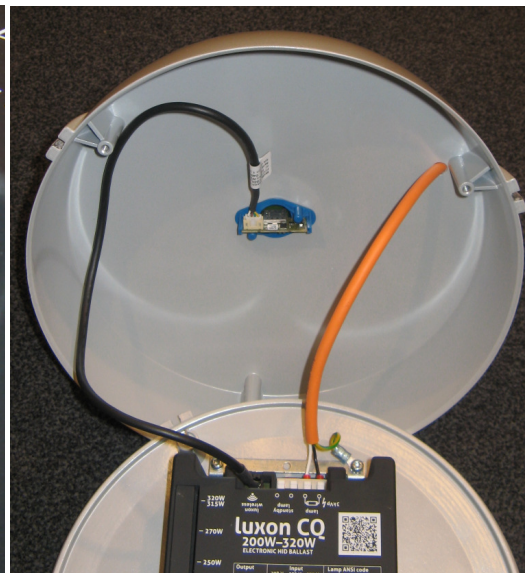


Figure 7: example assembly

6. Specifications

Input Supply	/dc, +/- 5%
	100mA
Operating temperature	o +85°C
Safety)950
EMC/Telecom)1489-1, EN300328 V1.7.1
	I7 part 15 and IC RSS210
Dimensions	36 mm

7. FCC and IC Declarations

FCC ID: CGDLW245A and IC: 1444A-LW245A

Compliance statement

This device complies with part 15 of the FCC Rules and to RSS210 of Industry Canada.

Operation is subject to the following two conditions:

- (1) this device may not cause harmful interference, and
- (2) this device must accept any interference received, including interference that may cause undesired operation.

Déclaration Conformité

Cet appareil se conforme aux normes RSS exemptés de licence du Industry Canada.

L'opération est soumise aux deux conditions suivantes

- (1) cet appareil ne doit causer aucune interférence, et
- (2) cet appareil doit accepter n'importe quelle interférence, y compris l'interférence qui peut causer une opération non prévue de cet appareil.

Warning

Changes or modifications not expressly approved by the party responsible for compliance could void the user's authority to operate the equipment.

RF Exposure

To comply with FCC RF exposure requirements for mobile transmitting devices, this transmitter should only be used or installed at locations where there is at least 20cm separation distance between the antenna and all persons.

8. Label artwork example for a fixture with LW245A module

