

---

**Inductive Proximity Card reader  
Brand Nedap  
Model Invexs190 series  
Interior Photographs**

Description of EUT: Inductive Proximity Cardreader  
Manufacturer: N.V. Nederlandse Apparatenfabriek "Nedap"  
Brand mark: Nedap  
Model: INVEXS 190 series  
FCC ID: CGDINVEXS190  
IC: 1444A-INVEXS190  
Type of Service: New application

---

### **Description of item**

Description of EUT : Inductive Proximity Card reader  
Manufacturer : N.V. Nederlandsche Apparatenfabriek "Nedap"  
Brand : Nedap  
Models : INVEXS M190, INVEXS MD190, INVEXS MK190, INVEXS MDK190,  
CUBE Card reader M190, CUBE Card reader MK190  
FCC ID : CGDINVEXS190  
IC : 1444A-INVEXS190  
Type of Service : New Application

### **Applicant information**

Applicant's representative : Mr. Jacques Hulshof  
Company : N.V. Nederlandsche Apparatenfabriek "Nedap"  
Address : Parallelweg 2  
Postal code : 7141 DC  
City : Groenlo  
PO-box : 6  
Postal code : 7140 AA  
City : Groenlo  
Country : The Netherlands  
Telephone number : +31 (0) 544 471111  
Telefax number : +31 (0) 544 463475

04 April 2013

## **Table of contents**

<b>1</b>	<b>PHOTOGRAPHS OF THE INVEXS M190 .....</b>	<b>4</b>
1.1	EXTERNAL PHOTOS .....	4
1.1.1	Front view.....	4
1.1.2	Rear view.....	4
1.2	INTERNAL VIEW PHOTOS.....	5
1.2.1	Removed cover back side.....	5
1.2.2	Passive antenna Printed Circuit Board mounted on mains board .....	5
1.2.3	Passive antenna Printed Circuit board .....	6
1.2.4	Backside printed circuit board .....	6
1.2.5	Front side printed circuit board.....	6
<b>2</b>	<b>PHOTOGRAPHS OF THE INVEXS MK190 .....</b>	<b>7</b>
2.1	EXTERNAL PHOTOS .....	7
2.1.1	Front view.....	7
2.1.2	Rear view.....	7
2.2	INTERNAL VIEW PHOTOS.....	8
2.2.1	Removed cover back side.....	8
2.2.2	Passive antenna Printed Circuit Board mounted on mains board .....	8
2.2.3	Keyboard .....	9
2.2.4	Keyboard removed.....	10
2.2.5	Backside printed circuit board .....	10
2.2.6	Front side printed circuit board.....	10

Description of EUT: Inductive Proximity Cardreader  
Manufacturer: N.V. Nederlandse Apparatenfabriek "Nedap"  
Brand mark: Nedap  
Model: INVEXS 190 series  
FCC ID: CGDINVEXS190  
IC: 1444A-INVEXS190  
Type of Service: New application

---

## 1 Photographs of the INVEXS M190

### 1.1 External photos

#### 1.1.1 Front view



#### 1.1.2 Rear view electronics potted



Description of EUT: Inductive Proximity Cardreader  
Manufacturer: N.V. Nederlandse Apparatenfabriek "Nedap"  
Brand mark: Nedap  
Model: INVEXS 190 series  
FCC ID: CGDINVEXS190  
IC: 1444A-INVEXS190  
Type of Service: New application

---

## 1.2 Internal view photos

### 1.2.1 Removed cover back side not potted



### 1.2.2 Passive antenna Printed Circuit Board mounted on mains board



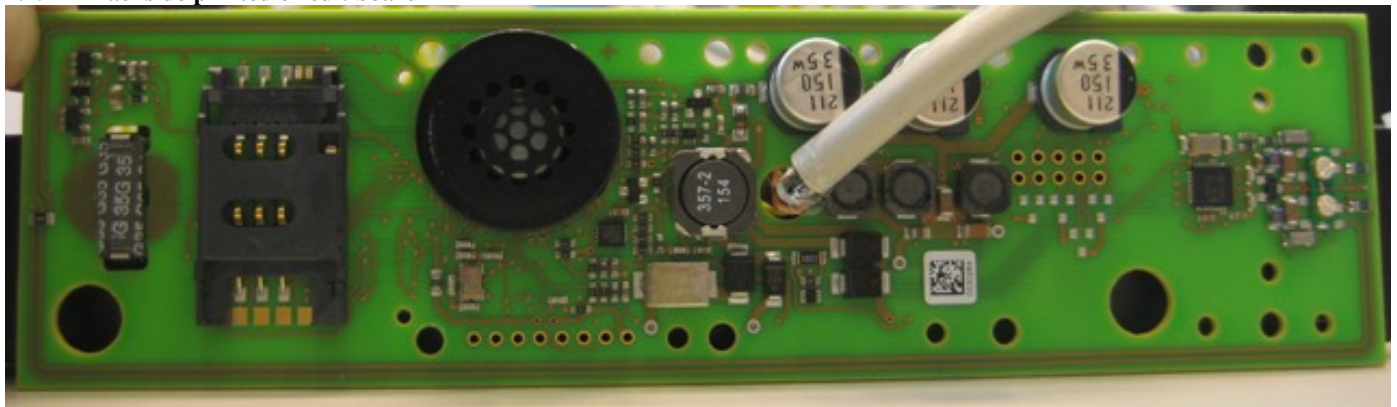
Description of EUT: Inductive Proximity Cardreader  
Manufacturer: N.V. Nederlandse Apparatenfabriek "Nedap"  
Brand mark: Nedap  
Model: INVEXS 190 series  
FCC ID: CGDINVEXS190  
IC: 1444A-INVEXS190  
Type of Service: New application

---

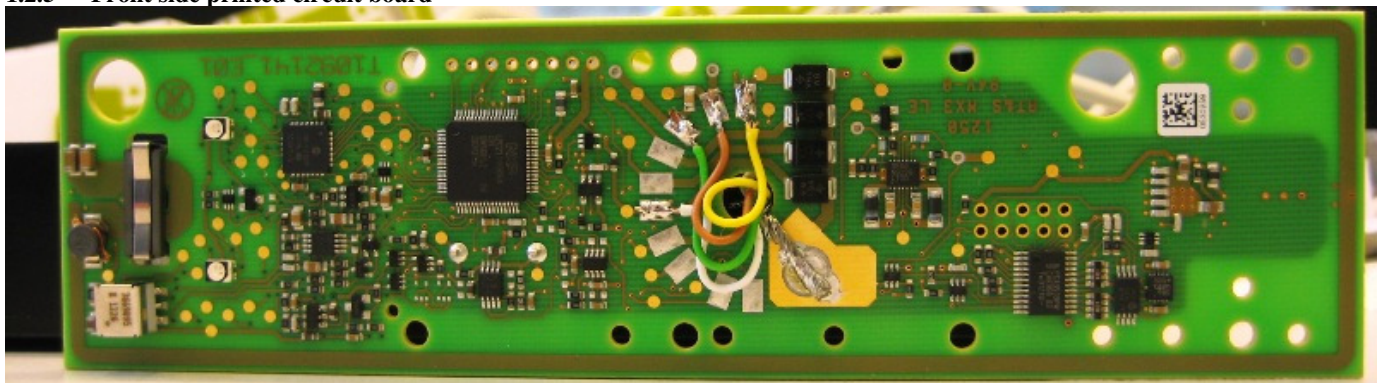
### 1.2.3 Passive antenna Printed Circuit board



### 1.2.4 Backside printed circuit board



### 1.2.5 Front side printed circuit board



Description of EUT: Inductive Proximity Cardreader  
Manufacturer: N.V. Nederlandse Apparatenfabriek "Nedap"  
Brand mark: Nedap  
Model: INVEXS 190 series  
FCC ID: CGDINVEXS190  
IC: 1444A-INVEXS190  
Type of Service: New application

---

## 2 Photographs of the INVEXS MK190

### 2.1 External photos

#### 2.1.1 Front view



#### 2.1.2 Rear view



Description of EUT: Inductive Proximity Cardreader  
Manufacturer: N.V. Nederlandse Apparatenfabriek "Nedap"  
Brand mark: Nedap  
Model: INVEXS 190 series  
FCC ID: CGDINVEXS190  
IC: 1444A-INVEXS190  
Type of Service: New application

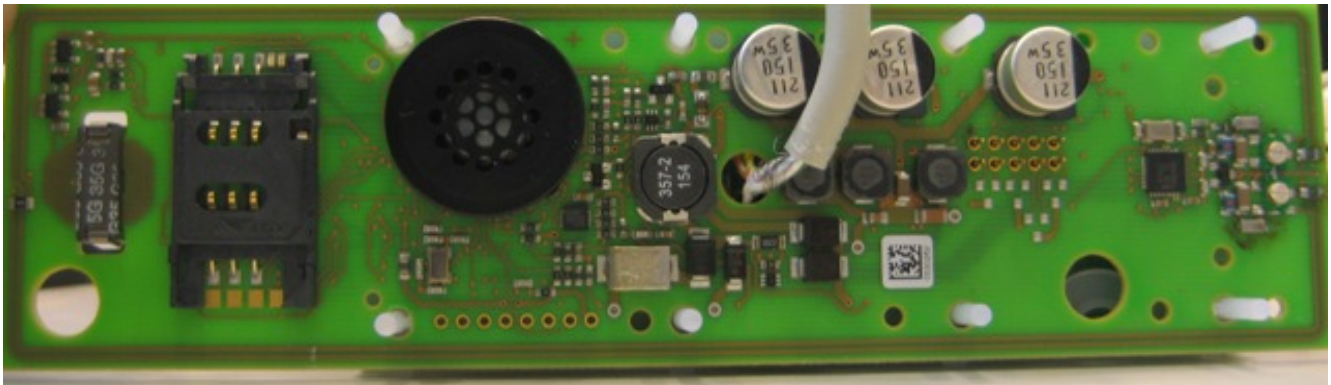
---

## 2.2 Internal view photos

### 2.2.1 Removed cover back side



### 2.2.2 Passive antenna Printed Circuit Board mounted on mains board





Description of EUT: Inductive Proximity Cardreader  
Manufacturer: N.V. Nederlandse Apparatenfabriek "Nedap"  
Brand mark: Nedap  
Model: INVEXS 190 series  
FCC ID: CGDINVEXS190  
IC: 1444A-INVEXS190  
Type of Service: New application

---

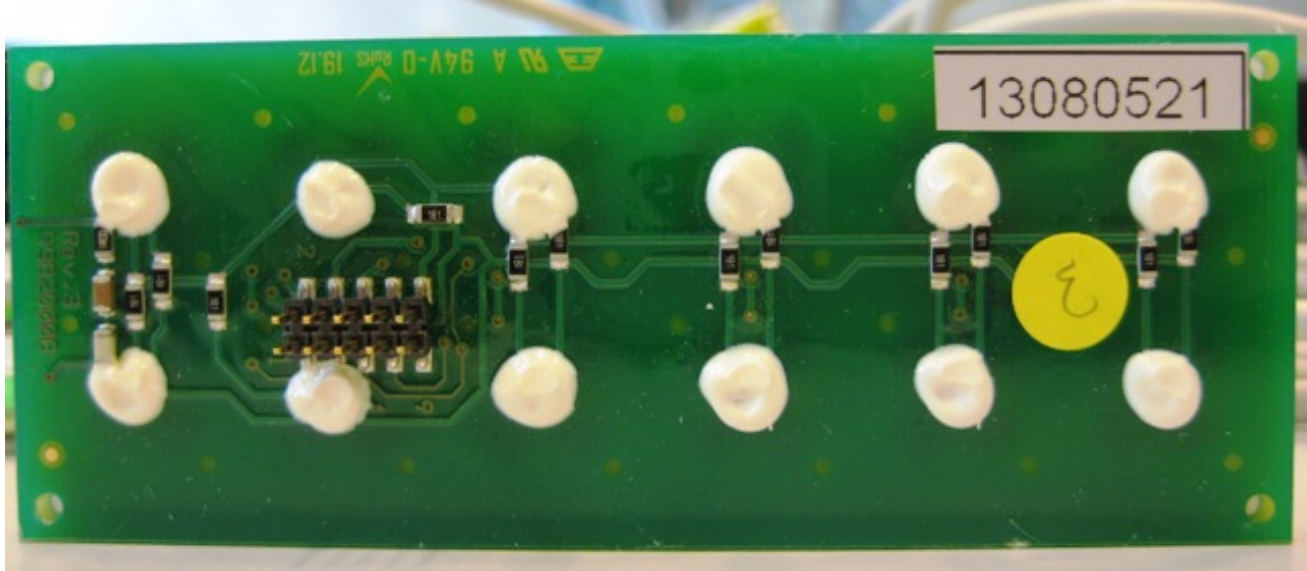
### 2.2.3 Keyboard



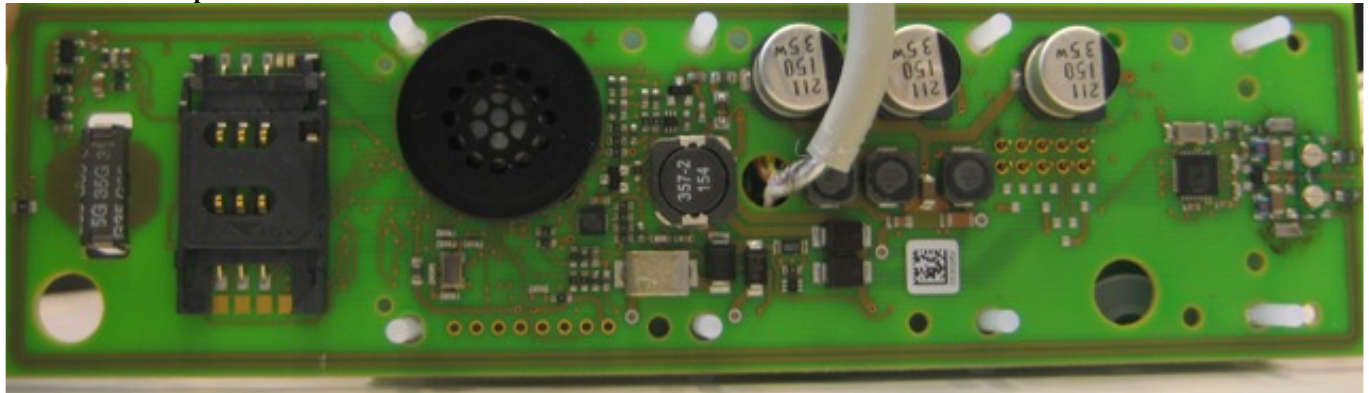
Description of EUT: Inductive Proximity Cardreader  
Manufacturer: N.V. Nederlandse Apparatenfabriek "Nedap"  
Brand mark: Nedap  
Model: INVEXS 190 series  
FCC ID: CGDINVEXS190  
IC: 1444A-INVEXS190  
Type of Service: New application

---

2.2.4 Keyboard removed



2.2.5 Backside printed circuit board



2.2.6 Front side printed circuit board

