
**Inductive Proximity Card reader
Brand Nedap
Model Invexs170 series
Interior Photographs**

Description of EUT: Inductive Proximity Cardreader
Manufacturer: N.V. Nederlandse Apparatenfabriek "Nedap"
Brand mark: Nedap
Model: INVEXS 170 series
FCC ID: CGDINVEXS170
IC: 1444A-INVEXS170
Type of Service: New application

Description of item

Description of EUT : Inductive Proximity Card reader
Manufacturer : N.V. Nederlandsche Apparatenfabriek "Nedap"
Brand : Nedap
Models : INVEXS MDK170B, INVEXS MDK170W, CUBE Card reader MK170W,
CUBE Card reader MK170B, CUBE Card reader MDK170W,
CUBE Card reader MDK170B
FCC ID : CGDINVEXS170
IC : 1444A-INVEXS170
Type of Service : New Application

Applicant information

Applicant's representative : Mr. Jacques Hulshof
Company : N.V. Nederlandsche Apparatenfabriek "Nedap"
Address : Parallelweg 2
Postal code : 7141 DC
City : Groenlo
PO-box : 6
Postal code : 7140 AA
City : Groenlo
Country : The Netherlands
Telephone number : +31 (0) 544 471111
Telefax number : +31 (0) 544 463475

11 July 2012

Description of EUT: Inductive Proximity Cardreader
Manufacturer: N.V. Nederlandse Apparatenfabriek "Nedap"
Brand mark: Nedap
Model: INVEXS 170 series
FCC ID: CGDINVEXS170
IC: 1444A-INVEXS170
Type of Service: New application

Table of contents

1	PHOTOGRAPHS OF THE INVEXS170	4
1.1	FRONT VIEW	4
1.2	REAR VIEW	4
1.3	INTERNAL VIEW 1 AFTER REMOVING COVER, BACKSIDE	5
1.4	INTERNAL VIEW 2 AFTER REMOVING COVER, FRONTSIDE	5
1.5	PRINTED CIRCUIT BOARD COMPONENT SIDE INCL. EXTRA PCB	6
1.6	PRINTED CIRCUIT BOARD COMPONENT SIDE EXCL. EXTRA PCB	6
1.7	BACKSIDE PRINTED CIRCUIT BOARD.....	7
1.8	EXTRA PCB	7

Description of EUT: Inductive Proximity Cardreader
Manufacturer: N.V. Nederlandse Apparatenfabriek "Nedap"
Brand mark: Nedap
Model: INVEXS 170 series
FCC ID: CGDINVEXS170
IC: 1444A-INVEXS170
Type of Service: New application

1 Photographs of the Invexs170

1.1 Front view

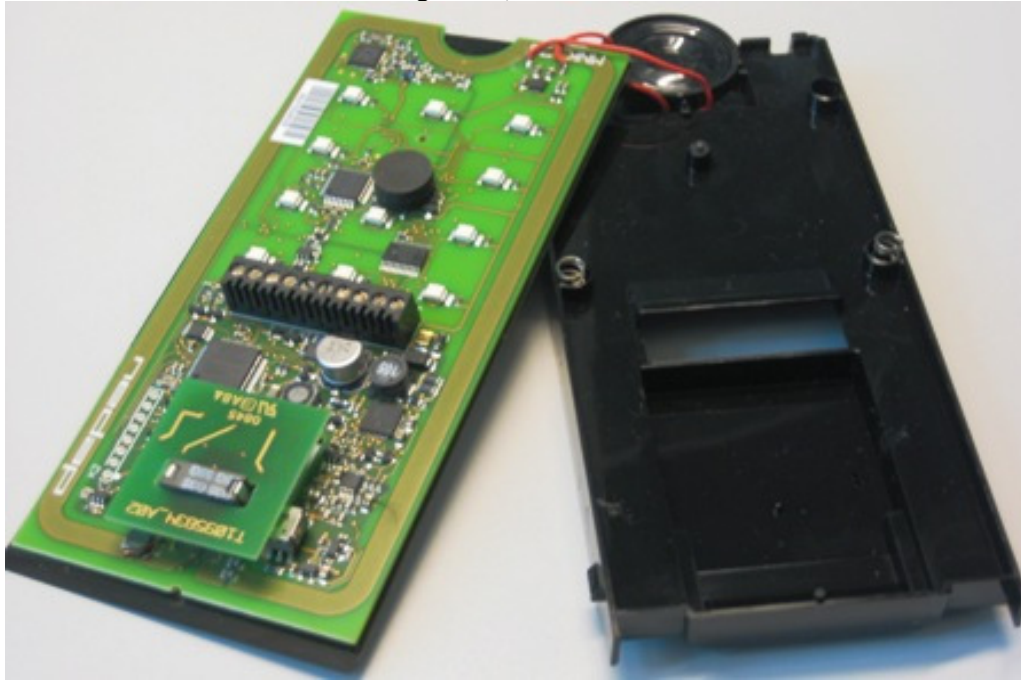


1.2 Rear view

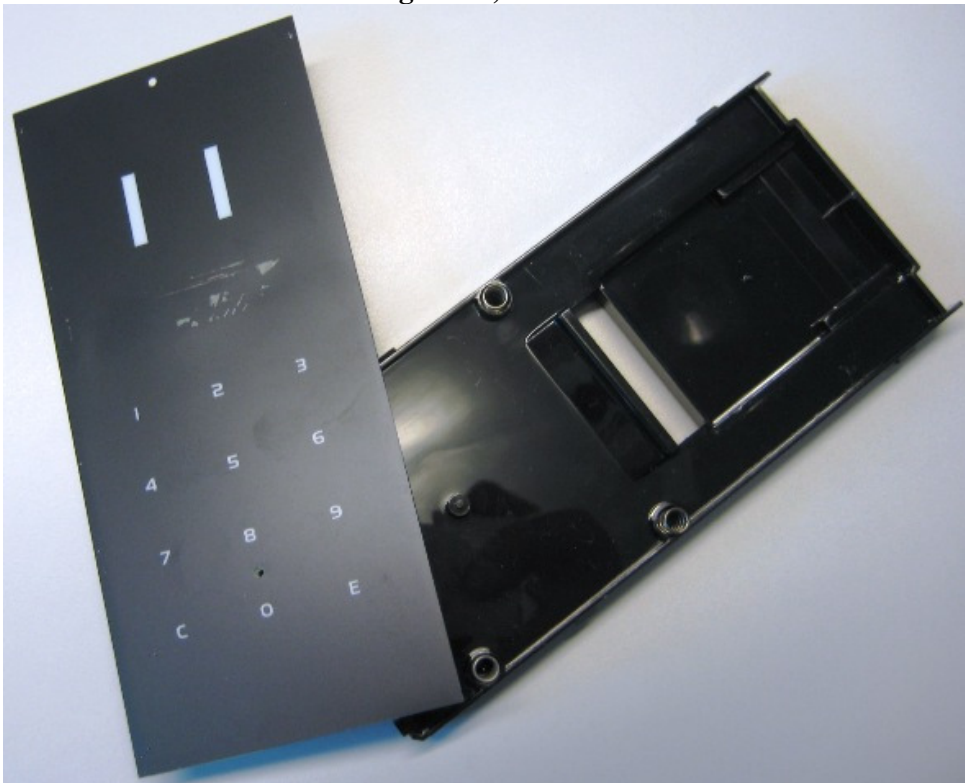


Description of EUT: Inductive Proximity Cardreader
Manufacturer: N.V. Nederlandse Apparatenfabriek "Nedap"
Brand mark: Nedap
Model: INVEXS 170 series
FCC ID: CGDINVEXS170
IC: 1444A-INVEXS170
Type of Service: New application

1.3 Internal view 1 after removing cover, backside

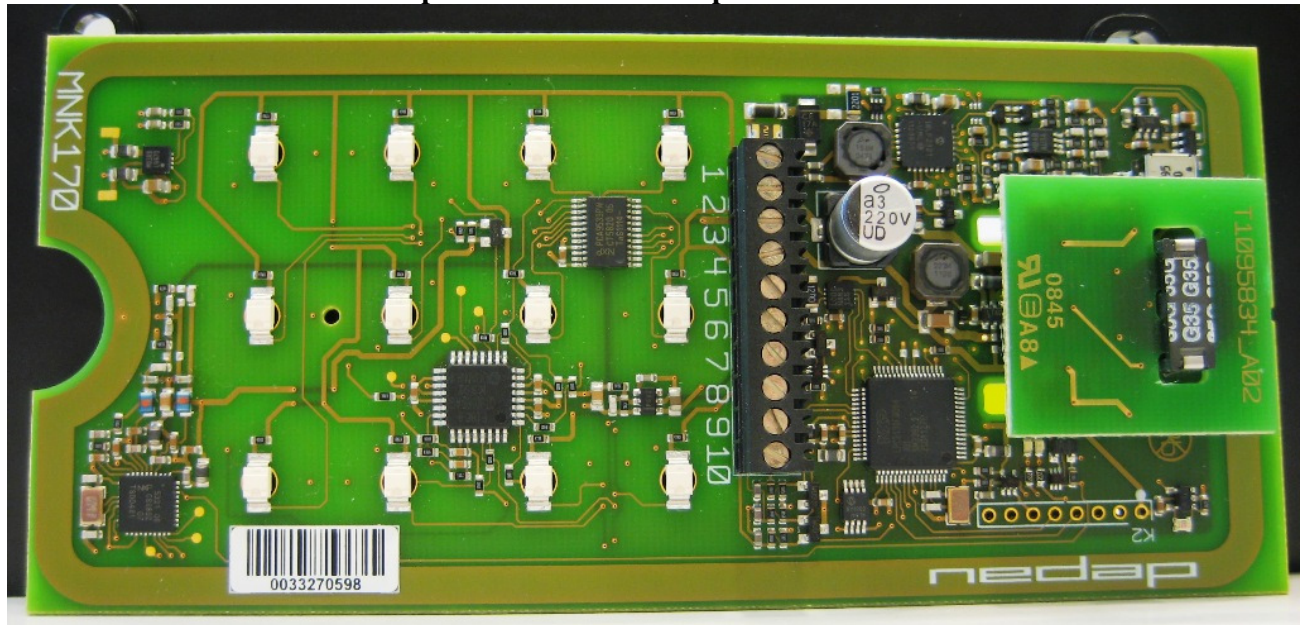


1.4 Internal view 2 after removing cover, frontside

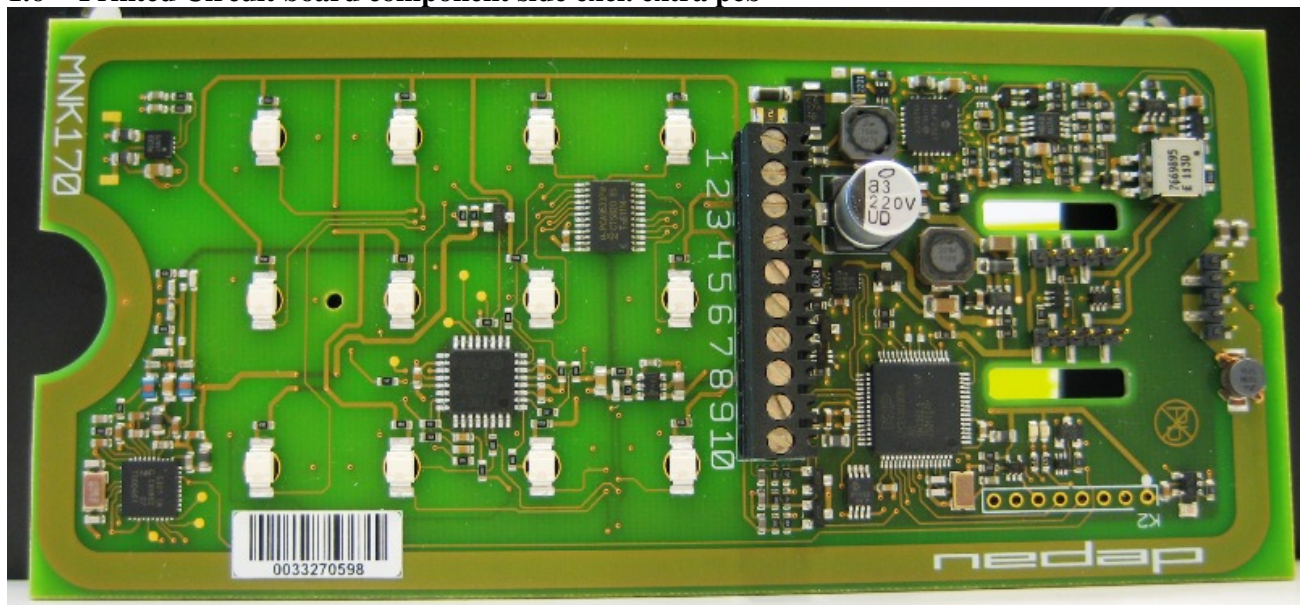


Description of EUT: Inductive Proximity Cardreader
Manufacturer: N.V. Nederlandse Apparatenfabriek "Nedap"
Brand mark: Nedap
Model: INVEXS 170 series
FCC ID: CGDINVEXS170
IC: 1444A-INVEXS170
Type of Service: New application

1.5 Printed Circuit board component side incl. extra pcb

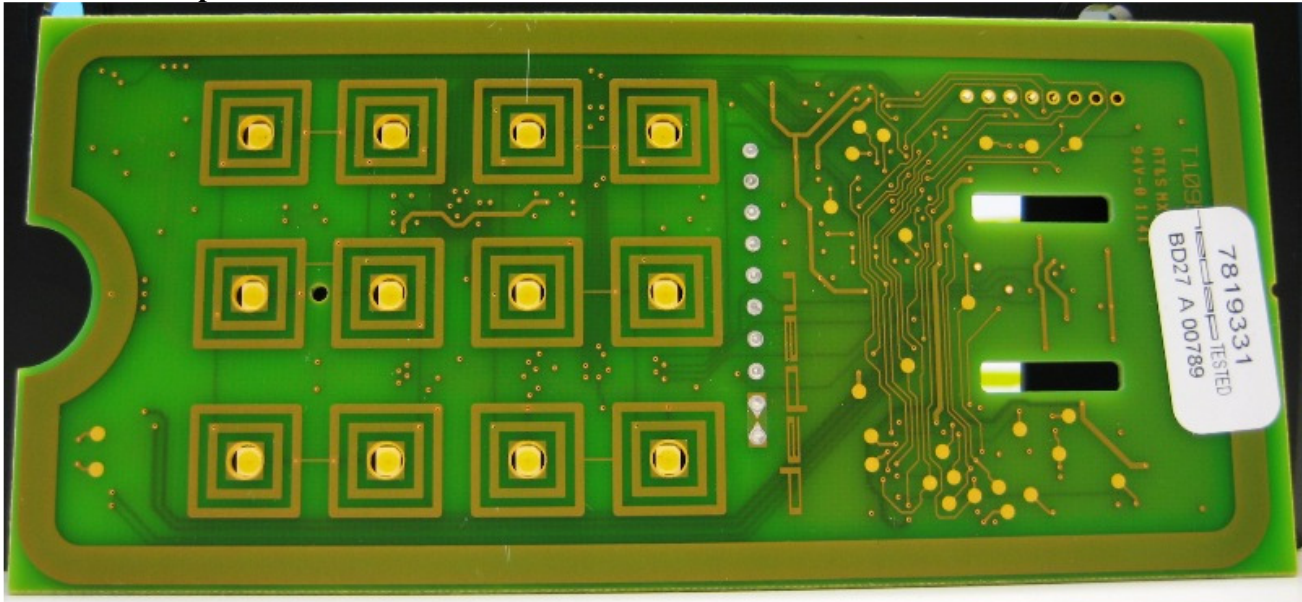


1.6 Printed Circuit board component side excl. extra pcb



Description of EUT: Inductive Proximity Cardreader
Manufacturer: N.V. Nederlandse Apparatenfabriek "Nedap"
Brand mark: Nedap
Model: INVEXS 170 series
FCC ID: CGDINVEXS170
IC: 1444A-INVEXS170
Type of Service: New application

1.7 Backside printed circuit board



1.8 Extra pcb

