

Nedap SmartTag-B Neck series

Photograph report – Interior

Version	0.1
Date	02-12-2022, rev. 22-06-2023
Author	K. Damhuis
Checked by	A.P. Haytema

Model differences

The models are identical w.r.t. pcb lay-out, component placement and transmitting circuitry. Difference is made by software features and optional identification LF ferrite coil.

SmartTag-B Neck series, model breakdown

Model	Type	Features			
		Identification	Fertility	Eating	Rumination
SmartTag-B Neck	FE4		X	X	
	IFE4	X	X	X	
	FER4		X	X	X
	IFER4	X	X	X	X

Model **SmartTag-B Neck IFER4** is considered as representative for this document since it contains the maximum features.

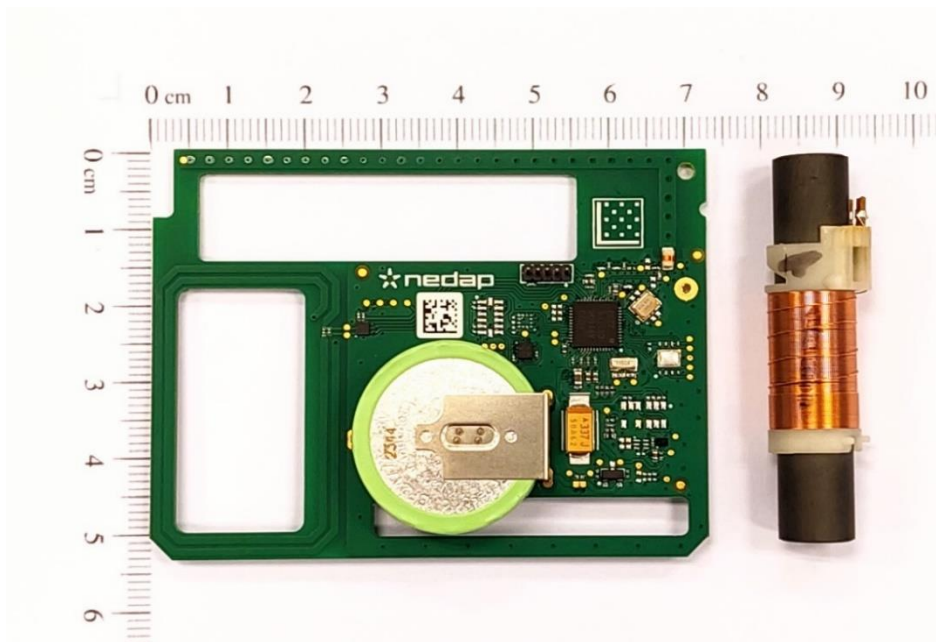


Fig. 1 - PCB for models SmartTag-B Neck model IFER4 with LF coil

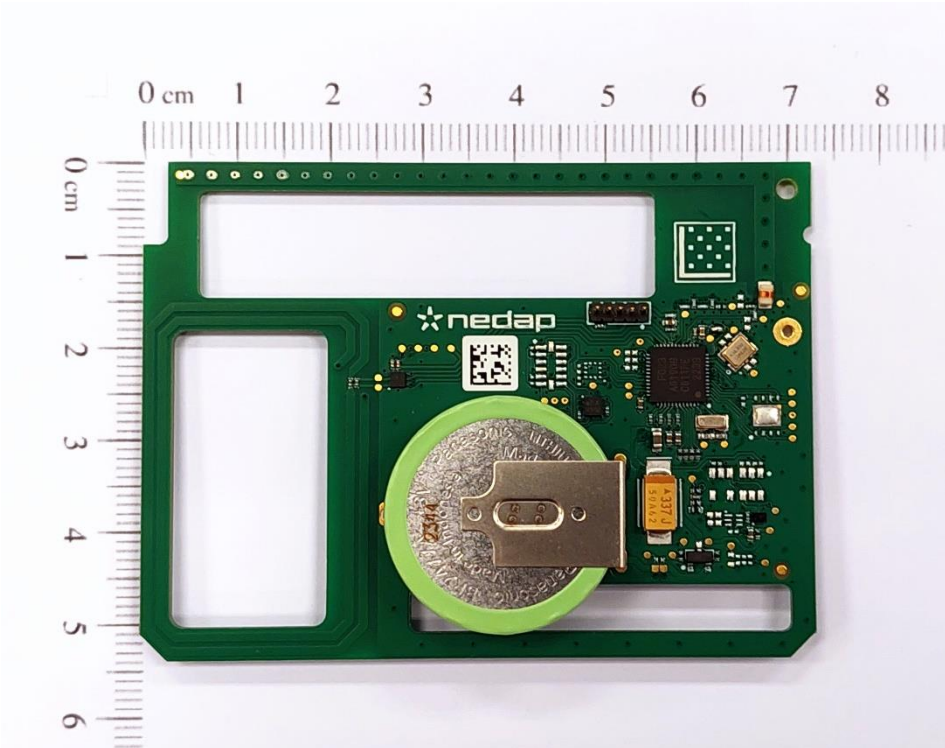


Fig. 2 - PCB for models SmartTag-B Neck model FER4 (without coil)

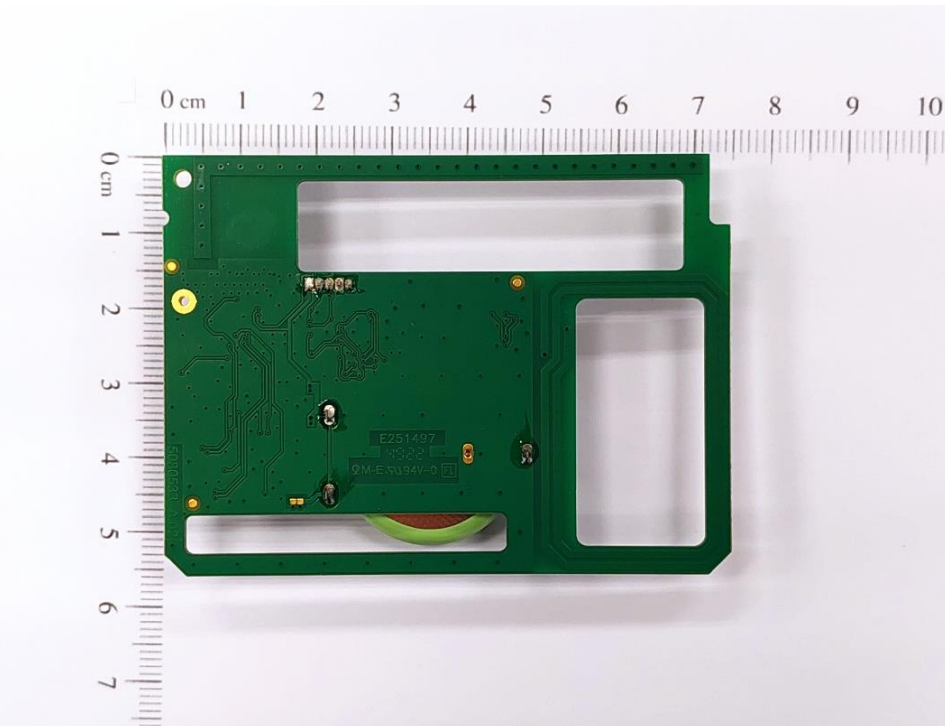


Fig. 3 – PCB, non-component side (all models)



Fig. 4 - PCB and optional LF coil inserted in the housing of the sub assembly



Fig. 5 – Subassembly after potting and ultrasonic welding