

Nedap SmartTag-B Neck series

Photograph report – Exterior

| | |
|------------|--------------|
| Version | 0.0 |
| Date | 02-12-2022 |
| Author | K. Damhuis |
| Checked by | A.P. Haytema |

Model differences

The models are identical w.r.t. pcb lay-out, component placement and transmitting circuitry. Difference is made by software features and optional identification LF ferrite coil.

SmartTag-B Neck series, model breakdown

| Model | Type | Features | | | |
|-----------------|-------|----------------|-----------|--------|------------|
| | | Identification | Fertility | Eating | Rumination |
| SmartTag-B Neck | FE4 | | X | X | |
| | IFE4 | X | X | X | |
| | FER4 | | X | X | X |
| | IFER4 | X | X | X | X |

Model **SmartTag-B Neck IFER4** is considered as representative for this document since it contains the maximum features.



Fig. 1 – Front side with marking (example)



Fig. 2 - Rear side with typelabel



Fig. 3 - Right side



Fig. 4 - Left side



Fig. 5 - Top side

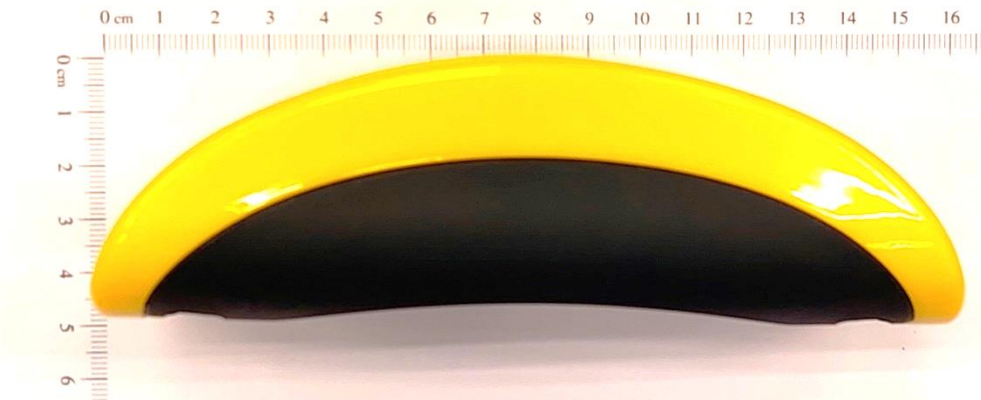


Fig. 6 - Bottom side