
**Inductive RFID card Reader operating on 13.56 MHz
Brand: Nedap
Model: ECO READER 4
Interior Photographs**

Description of EUT: Inductive RFID card Reader operating on
13.56 MHz
Manufacturer: N.V. Nederlandse Apparatenfabriek "Nedap"
Brand mark: Nedap
Model: ECO READER 4
FCC ID: CGDECO41356
IC: 1444A- ECO41356
Type of Service: New Application

Description of item

Description of EUT : Inductive RFID card Reader operating on 13.56 MHz
Manufacturer : N.V. Nederlandsche Apparatenfabriek "Nedap"
Brand : Nedap
Model : ECO READER 4
FCC ID : CGDECO41356
IC : 1444A-ECO41356
Type of Service : New Application

Applicant information

Applicant's representative : Mr. Jacques Hulshof
Company : N.V. Nederlandsche Apparatenfabriek "Nedap"
Address : Parallelweg 2
Postal code : 7141 DC
City : Groenlo
PO-box : 6
Postal code : 7140 AA
City : Groenlo
Country : The Netherlands
Telephone number : +31 (0) 544 471111
Telefax number : +31 (0) 544 463475

16 February 2014

Description of EUT: Inductive RFID card Reader operating on
13.56 MHz
 Manufacturer: N.V. Nederlandse Apparatenfabriek "Nedap"
 Brand mark: Nedap
 Model: ECO READER 4
 FCC ID: CGDECO41356
 IC: 1444A- ECO41356
 Type of Service: New Application

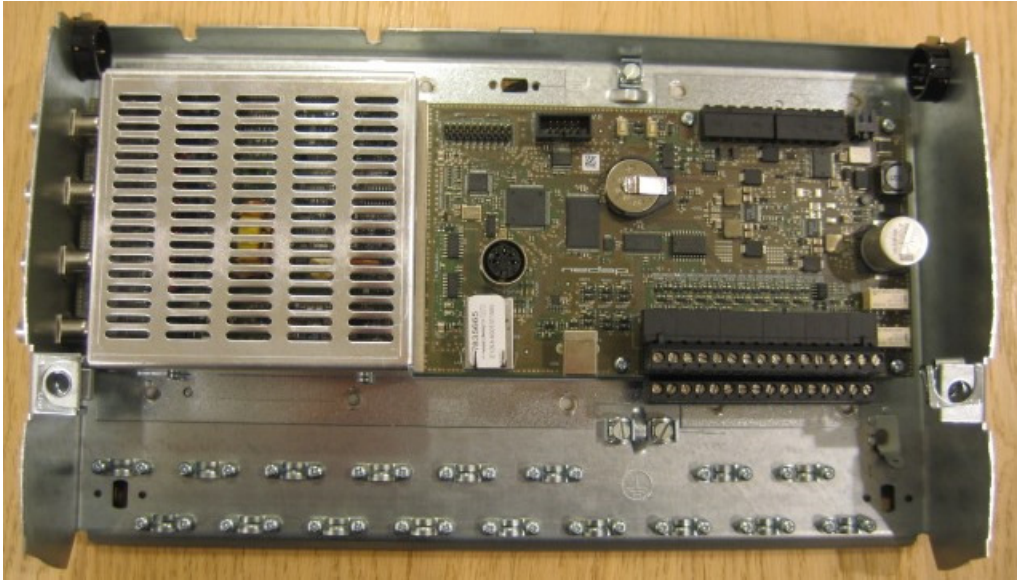
Table of contents

1	ECO READER 4 COVER REMOVED	4
1.1	TOTAL OVERVIEW	4
1.2	METAL COVER DETAIL	4
2	PRINTED CIRCUIT BOARD OF THE ECO READER 4	5
2.1	COMPONENT SIDE TOTAL OVERVIEW	5
2.1.1	<i>Detail left</i>	5
2.1.2	<i>Detail middle</i>	6
2.1.3	<i>Detail right</i>	6
2.2	SOLDER SIDE	7
2.2.1	<i>Detail left</i>	7
2.2.2	<i>Detail middle</i>	8
2.2.3	<i>Detail right</i>	8
3	PG 45 PCB	9
3.1	OPENED ANTENNA FOOT	9
3.2	MATCH-CC PCB.....	9
3.2.1	<i>Component side</i>	9
3.2.2	<i>Solder side</i>	10
4	PG50 PCB.S	10
4.1	OPENED ANTENNA FOOT CC	10
4.2	CUSTOMER COUNTING PCB	11
4.2.1	<i>Component side</i>	11
4.2.2	<i>Solder side</i>	11
4.3	OPENED ANTENNA FOOT MATCH	12
4.4	MATCH PCB.....	12
4.4.1	<i>Component side</i>	12
4.4.2	<i>Solder side</i>	13
5	SHELF PCB MATCH.....	13
5.1	NOT OPENED ENCLOSURE SHIELDED SHELF	13
5.2	OPENED UNSHIELDED SHELF PCB	14
5.3	MATCH PCB	14
5.3.1	<i>Component side</i>	14
5.3.2	<i>Solder side</i>	14

Description of EUT: Inductive RFID card Reader operating on 13.56 MHz
Manufacturer: N.V. Nederlandse Apparatenfabriek "Nedap"
Brand mark: Nedap
Model: ECO READER 4
FCC ID: CGDECO41356
IC: 1444A- ECO41356
Type of Service: New Application

1 ECO READER 4 cover removed

1.1 Total overview



1.2 Metal cover detail



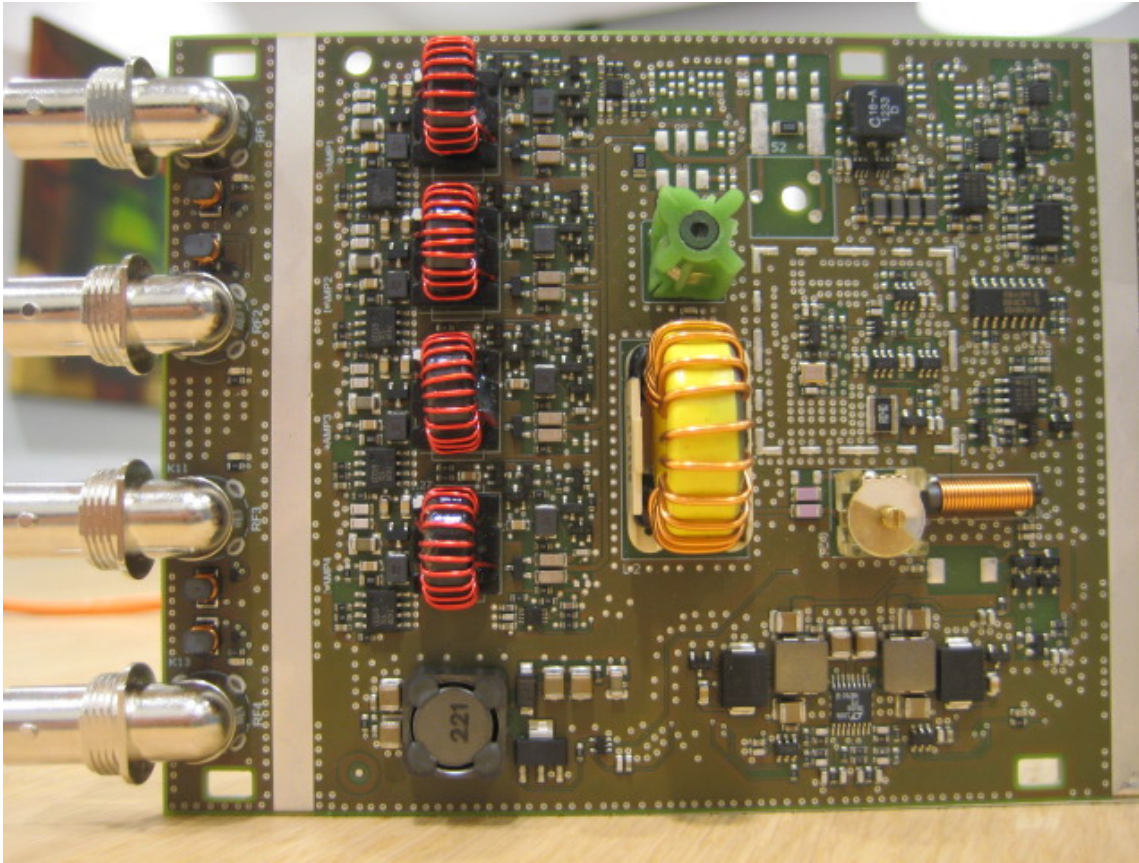
Description of EUT: Inductive RFID card Reader operating on 13.56 MHz
Manufacturer: N.V. Nederlandse Apparatenfabriek "Nedap"
Brand mark: Nedap
Model: ECO READER 4
FCC ID: CGDECO41356
IC: 1444A- ECO41356
Type of Service: New Application

2 Printed circuit board of the ECO READER 4

2.1 Component side total overview

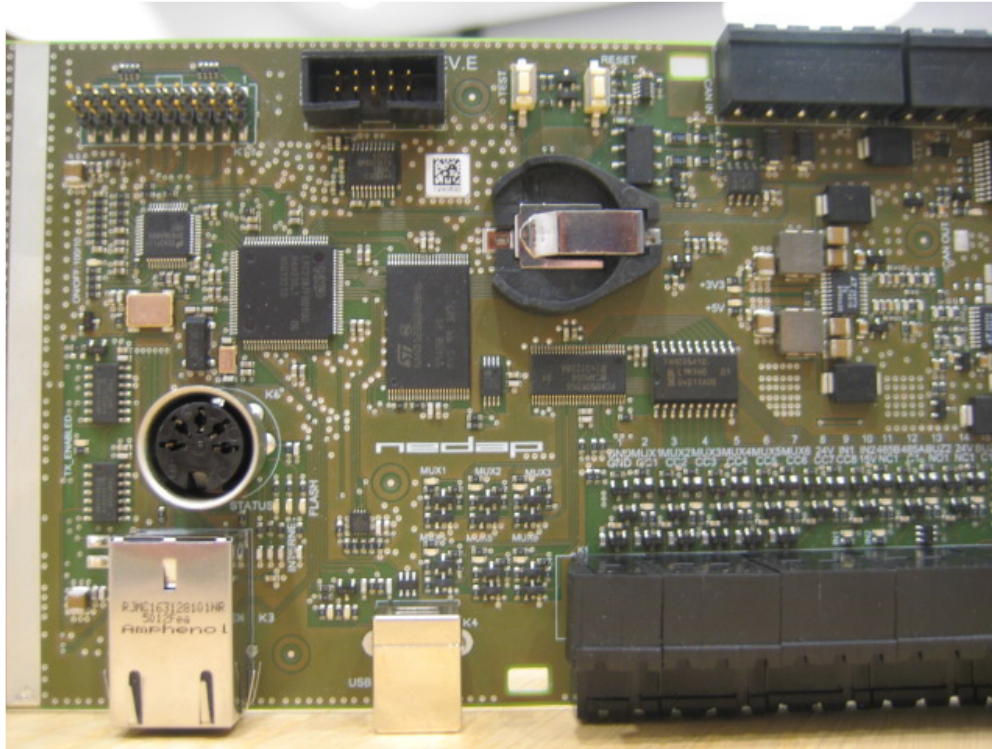


2.1.1 Detail left

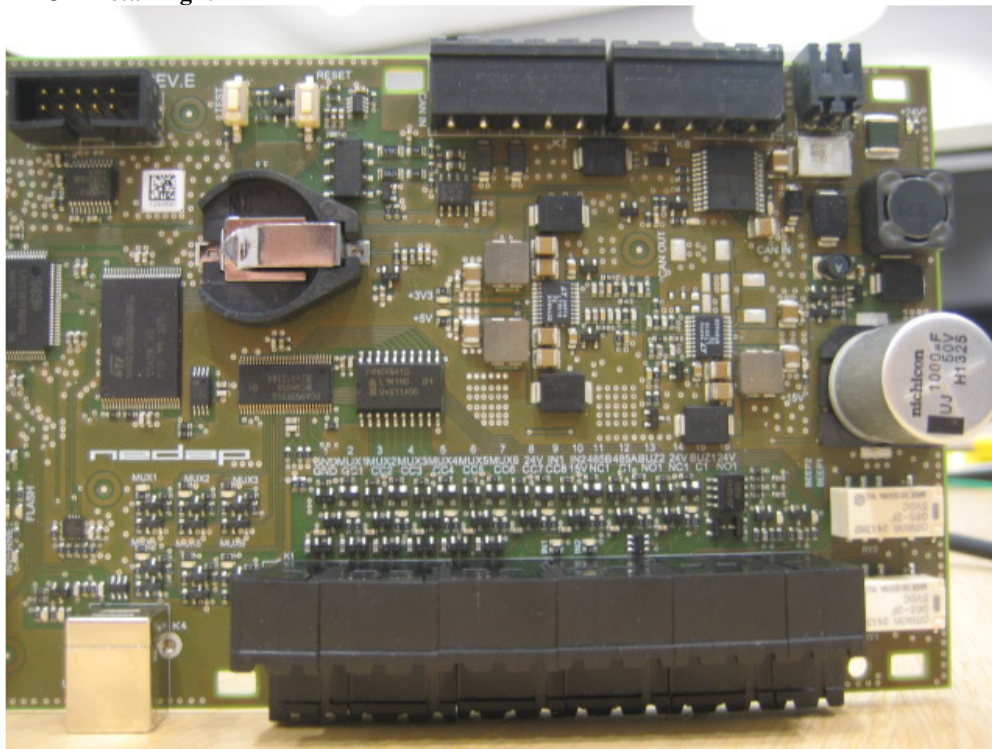


Description of EUT: Inductive RFID card Reader operating on 13.56 MHz
Manufacturer: N.V. Nederlandse Apparatenfabriek "Nedap"
Brand mark: Nedap
Model: ECO READER 4
FCC ID: CGDECO41356
IC: 1444A- ECO41356
Type of Service: New Application

2.1.2 Detail middle

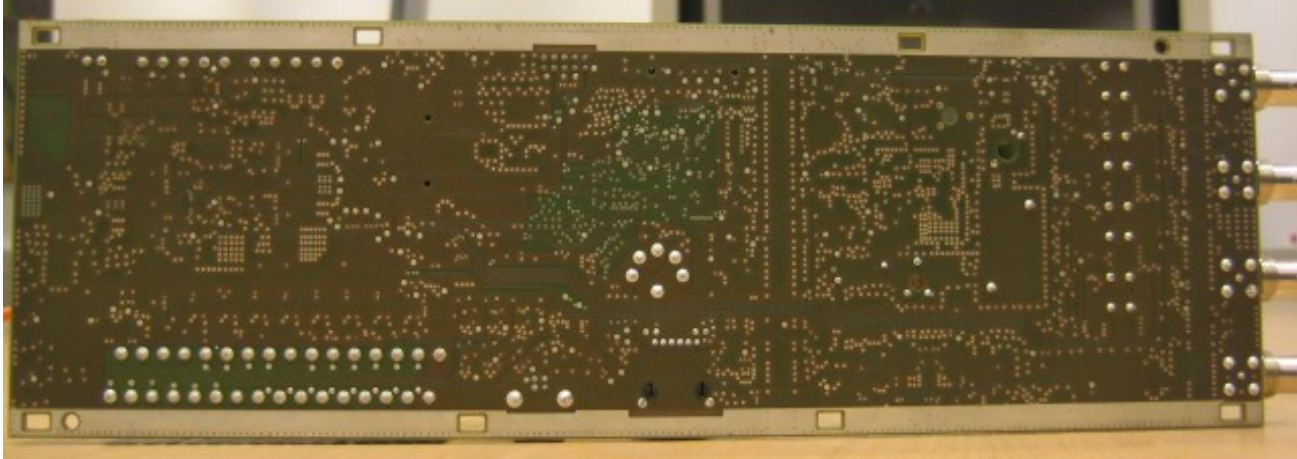


2.1.3 Detail right

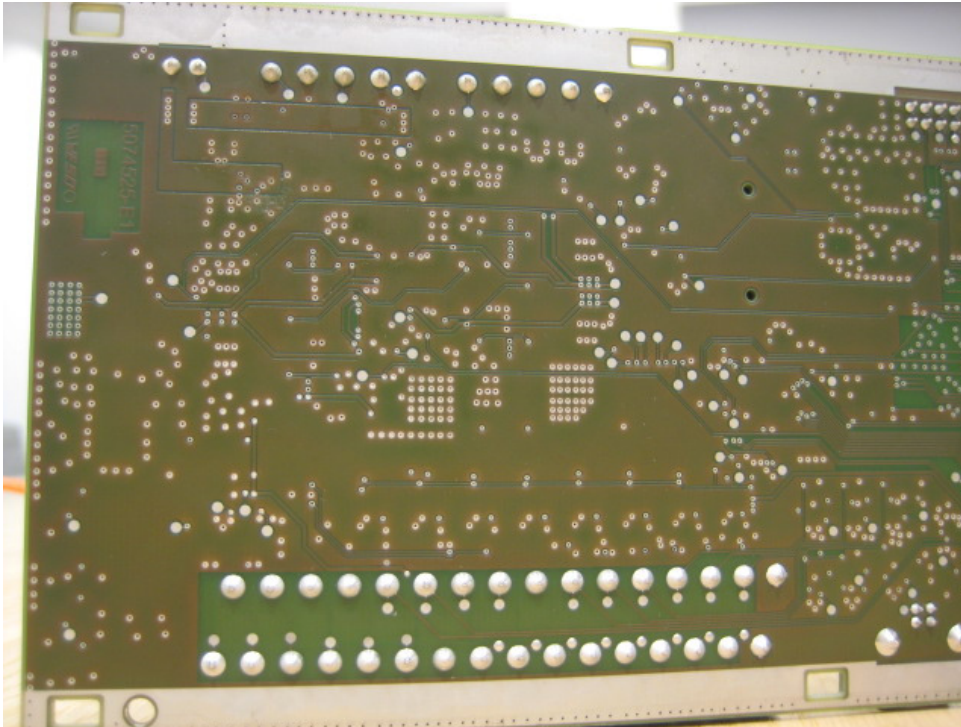


Description of EUT: Inductive RFID card Reader operating on 13.56 MHz
Manufacturer: N.V. Nederlandse Apparatenfabriek "Nedap"
Brand mark: Nedap
Model: ECO READER 4
FCC ID: CGDECO41356
IC: 1444A- ECO41356
Type of Service: New Application

2.2 Solder side

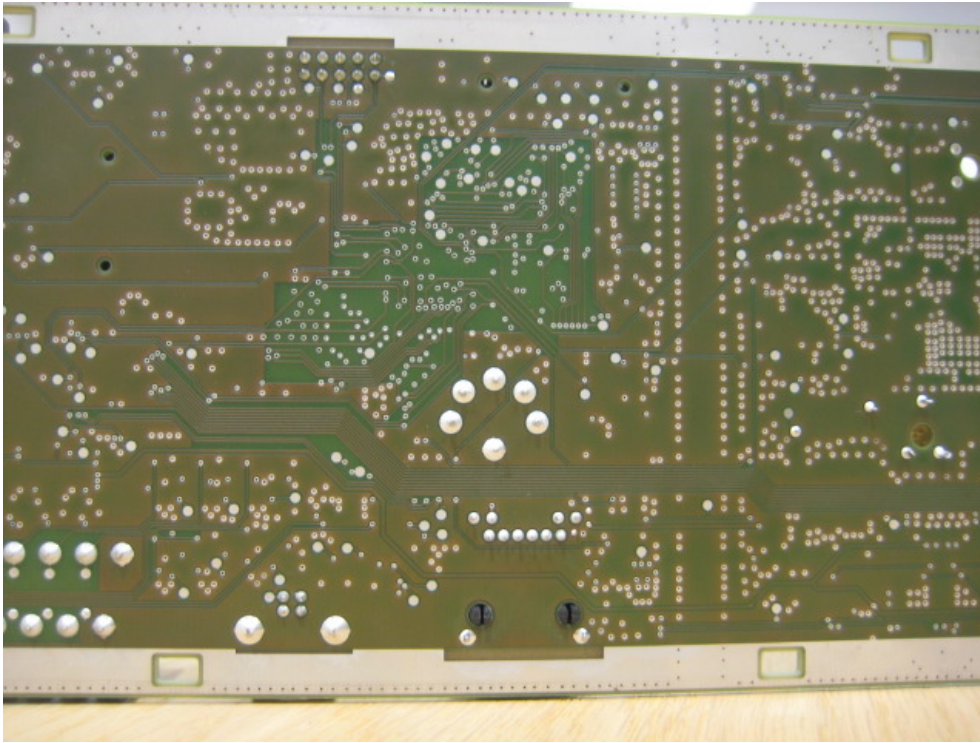


2.2.1 Detail left

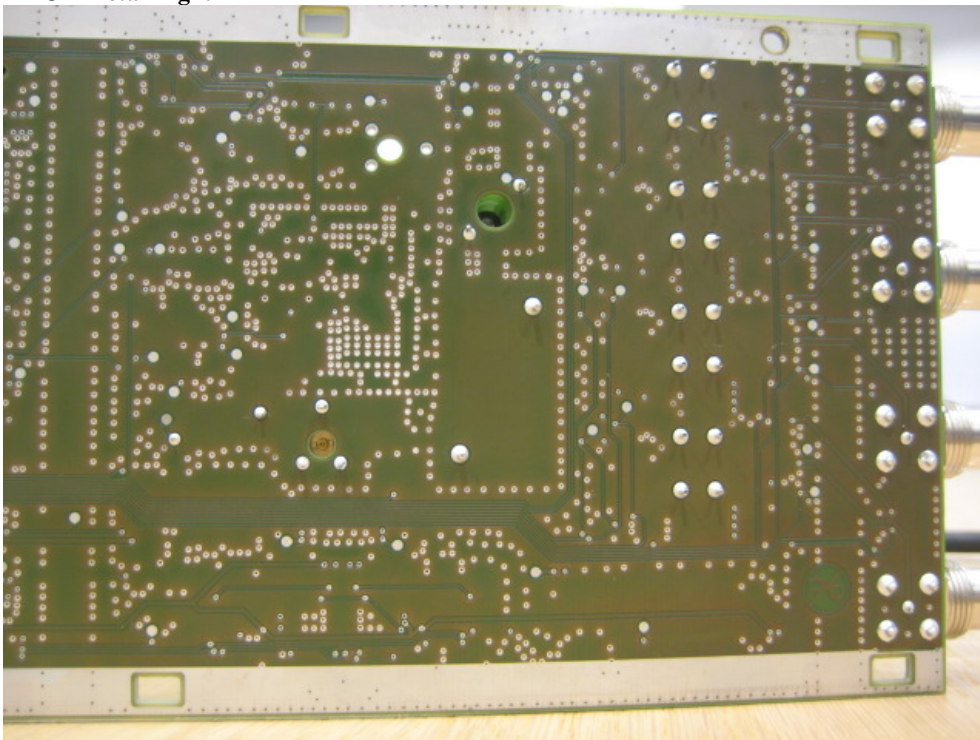


Description of EUT: Inductive RFID card Reader operating on 13.56 MHz
Manufacturer: N.V. Nederlandse Apparatenfabriek "Nedap"
Brand mark: Nedap
Model: ECO READER 4
FCC ID: CGDECO41356
IC: 1444A- ECO41356
Type of Service: New Application

2.2.2 Detail middle



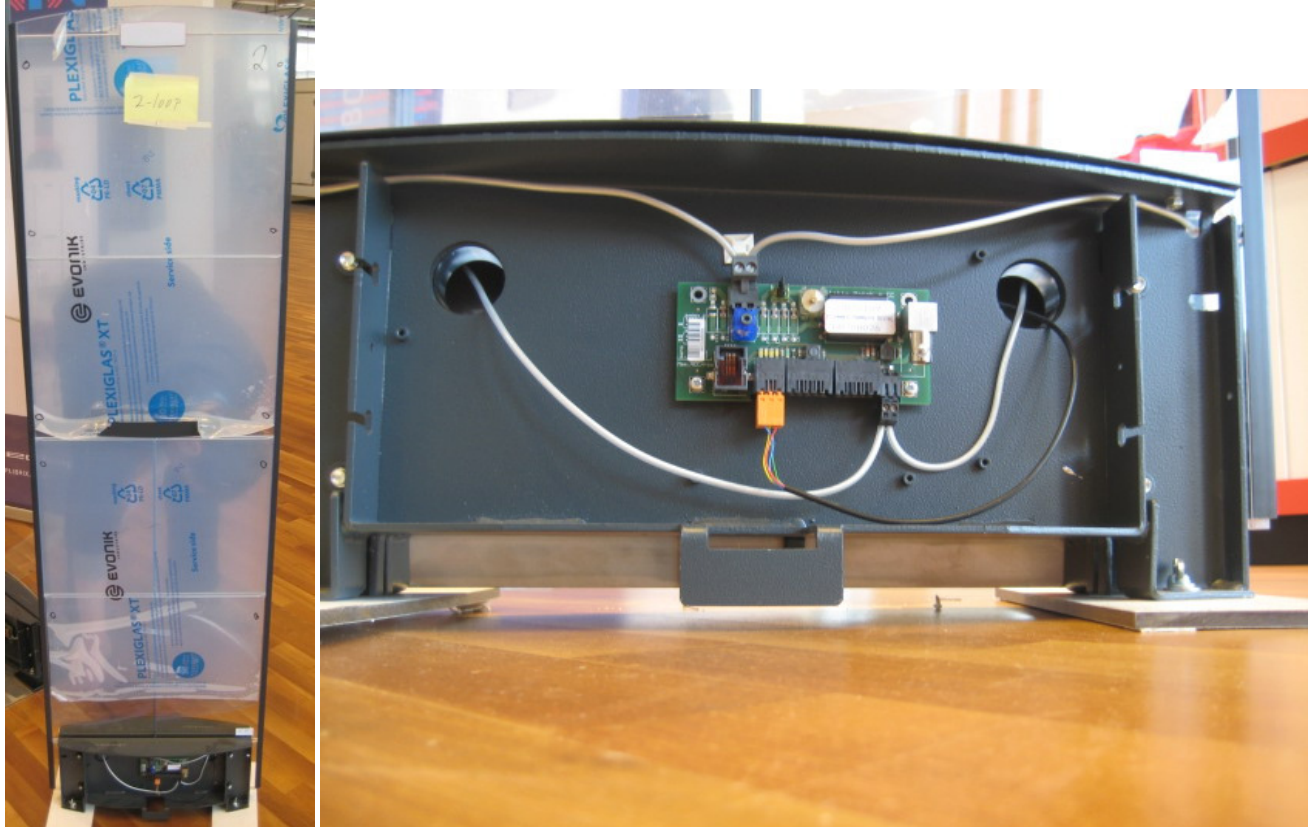
2.2.3 Detail right



Description of EUT: Inductive RFID card Reader operating on 13.56 MHz
Manufacturer: N.V. Nederlandse Apparatenfabriek "Nedap"
Brand mark: Nedap
Model: ECO READER 4
FCC ID: CGDECO41356
IC: 1444A- ECO41356
Type of Service: New Application

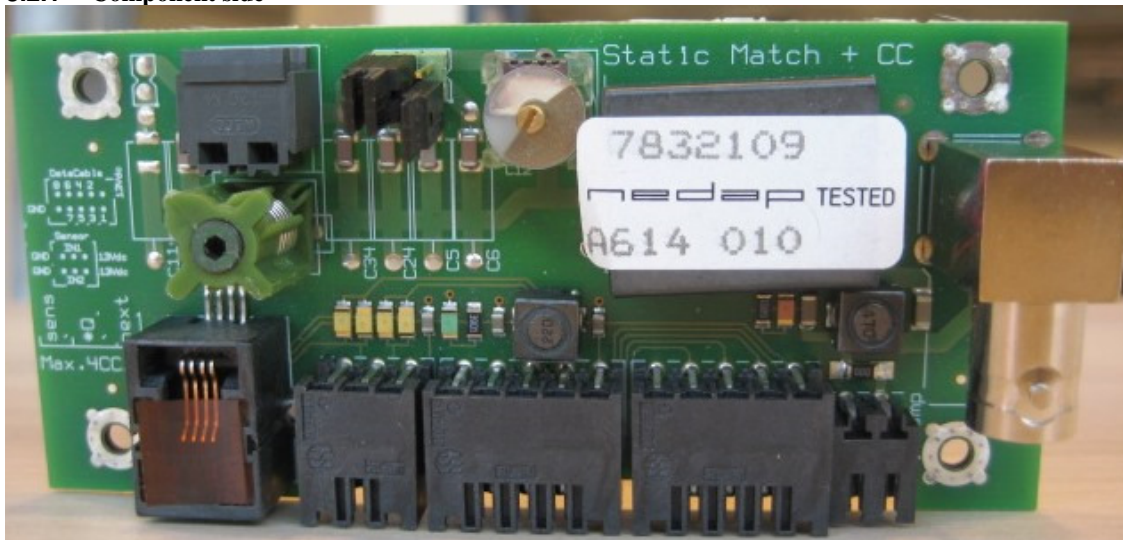
3 PG 45 PCB

3.1 Opened antenna foot



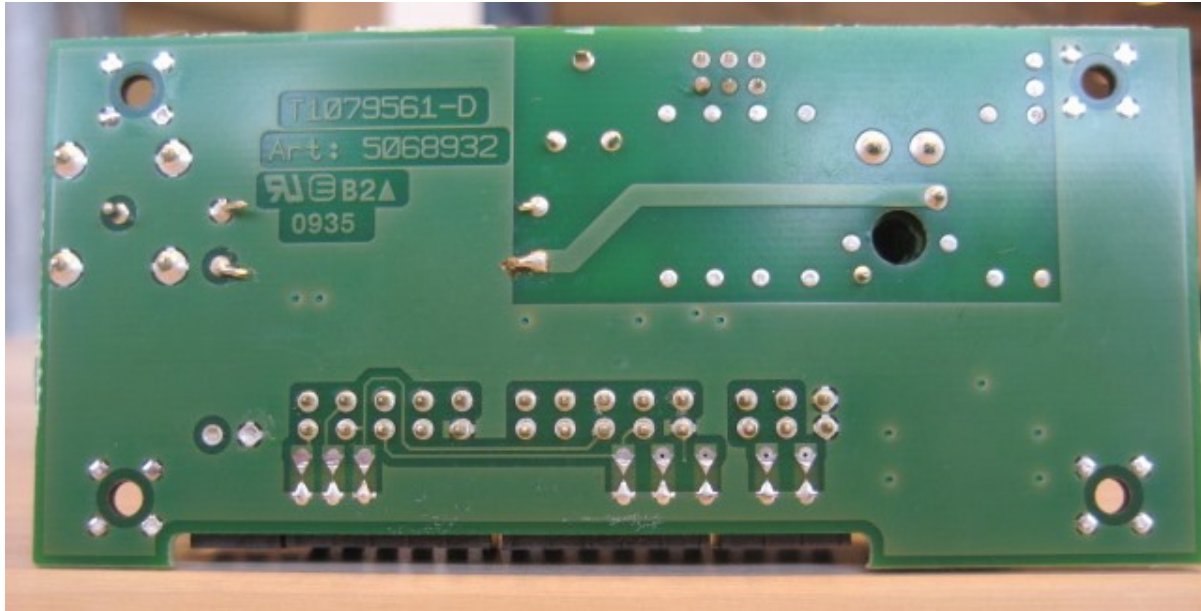
3.2 Match-CC PCB

3.2.1 Component side



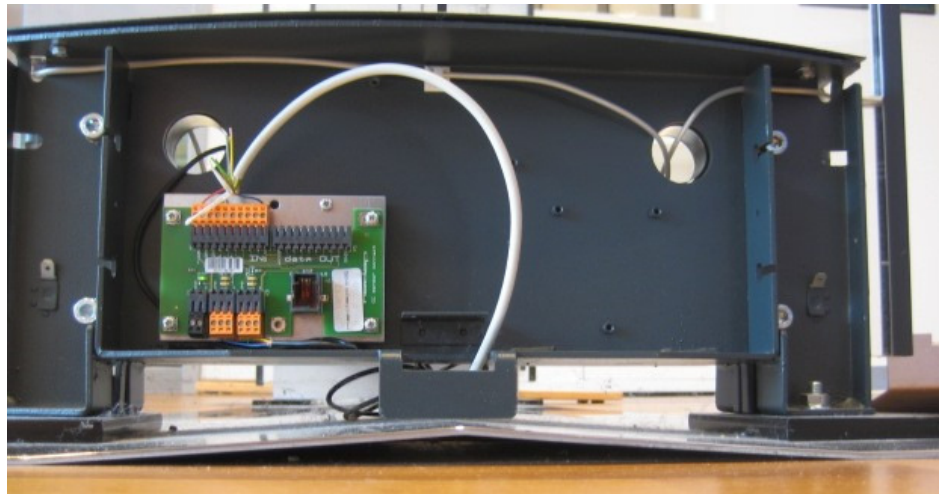
Description of EUT: Inductive RFID card Reader operating on 13.56 MHz
Manufacturer: N.V. Nederlandse Apparatenfabriek "Nedap"
Brand mark: Nedap
Model: ECO READER 4
FCC ID: CGDECO41356
IC: 1444A- ECO41356
Type of Service: New Application

3.2.2 Solder side



4 PG50 PCB.s

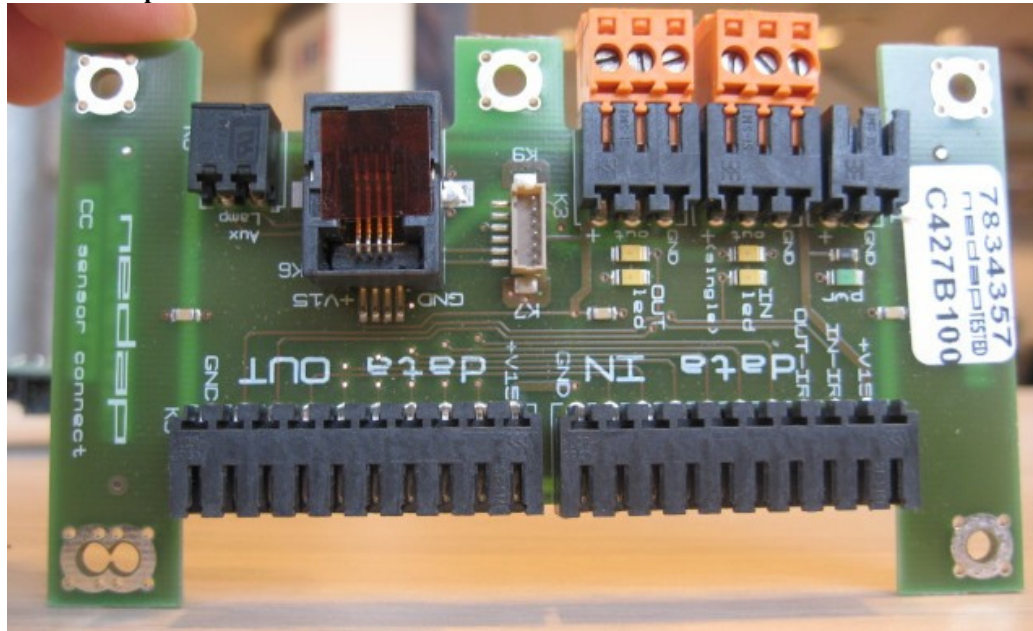
4.1 Opened antenna foot CC



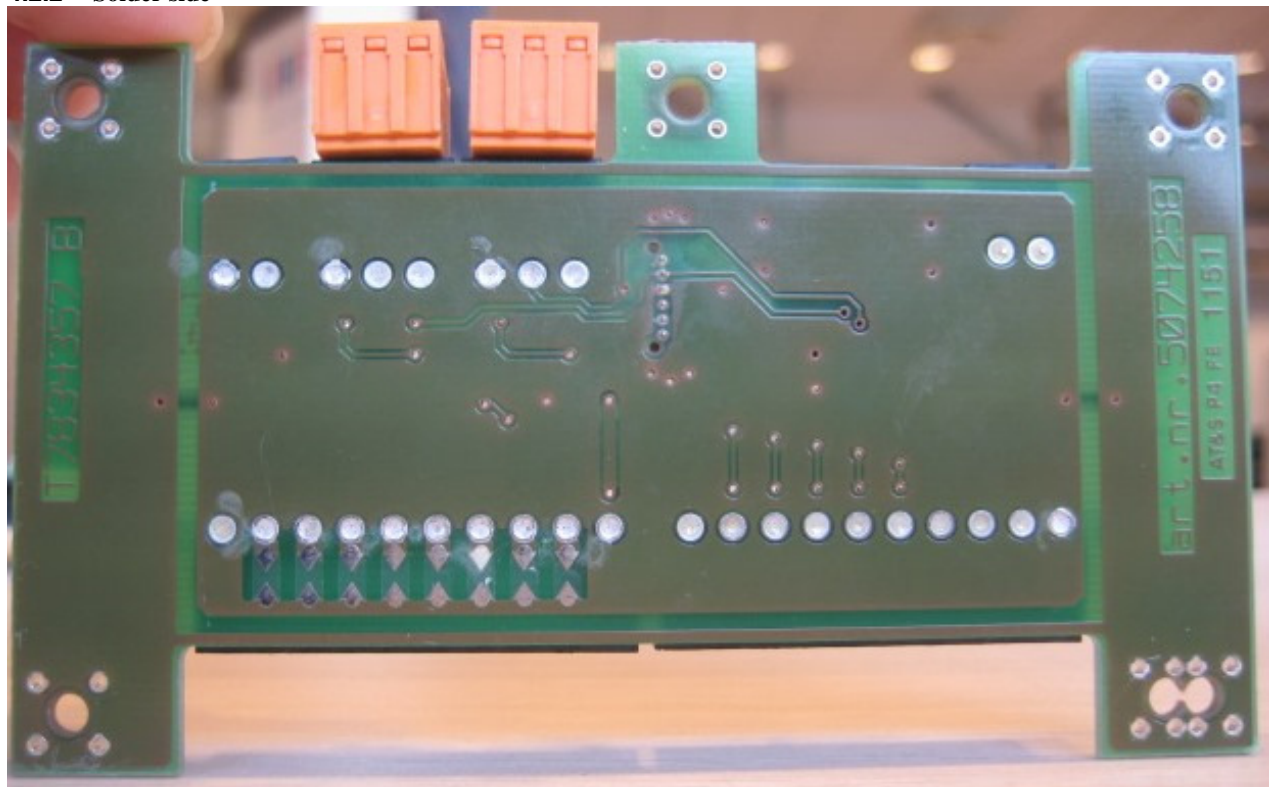
Description of EUT: Inductive RFID card Reader operating on 13.56 MHz
Manufacturer: N.V. Nederlandse Apparatenfabriek "Nedap"
Brand mark: Nedap
Model: ECO READER 4
FCC ID: CGDECO41356
IC: 1444A- ECO41356
Type of Service: New Application

4.2 Customer Counting pcb

4.2.1 Component side

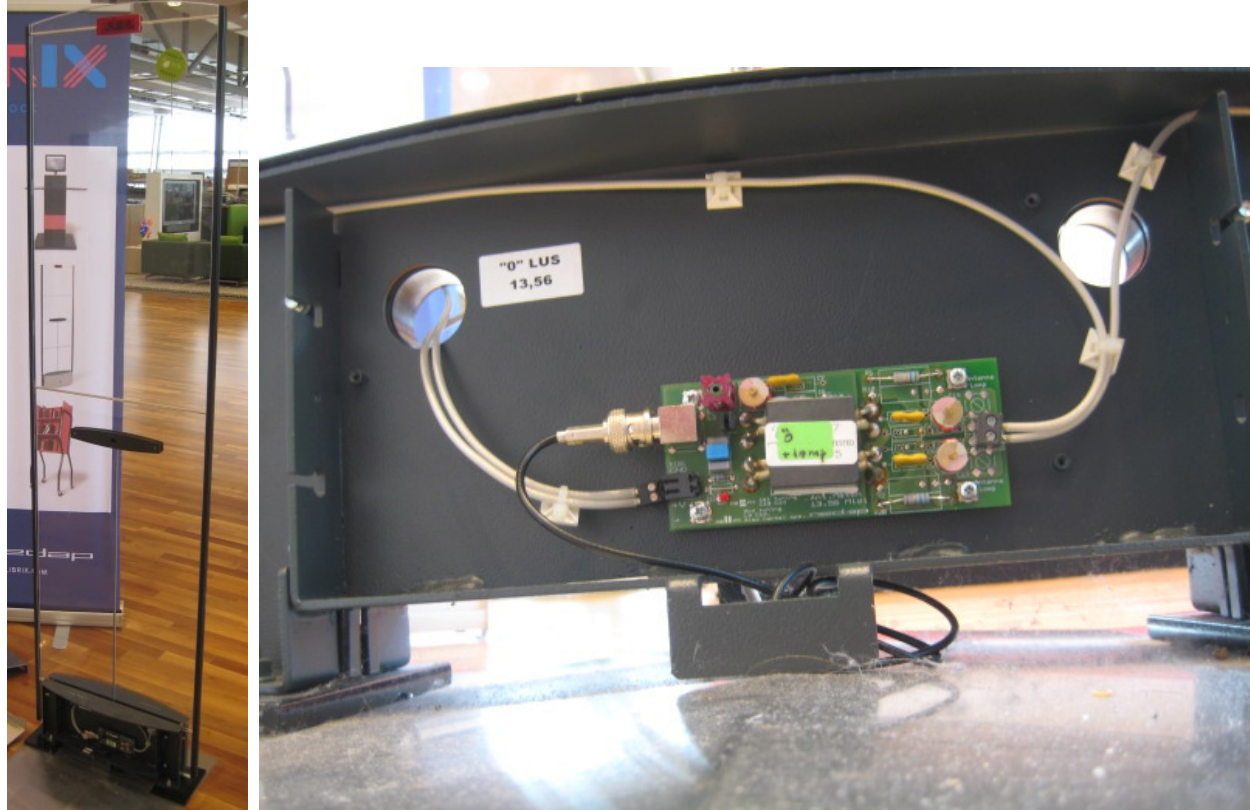


4.2.2 Solder side



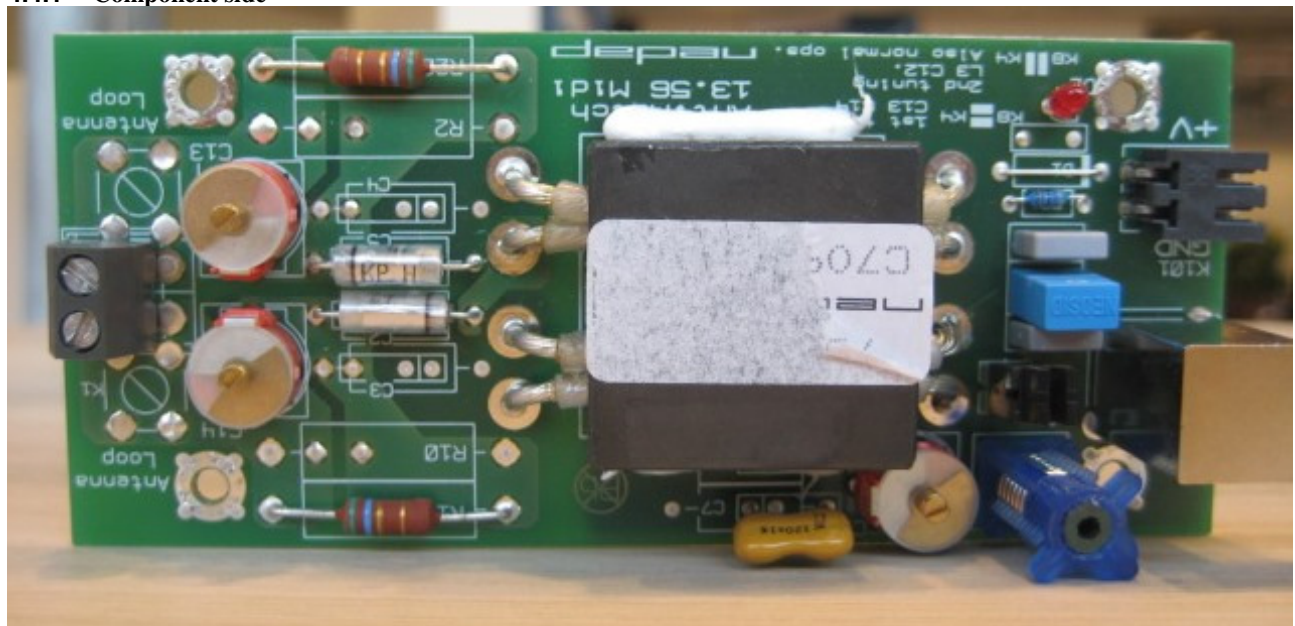
Description of EUT: Inductive RFID card Reader operating on 13.56 MHz
Manufacturer: N.V. Nederlandse Apparatenfabriek "Nedap"
Brand mark: Nedap
Model: ECO READER 4
FCC ID: CGDECO41356
IC: 1444A- ECO41356
Type of Service: New Application

4.3 Opened antenna foot Match



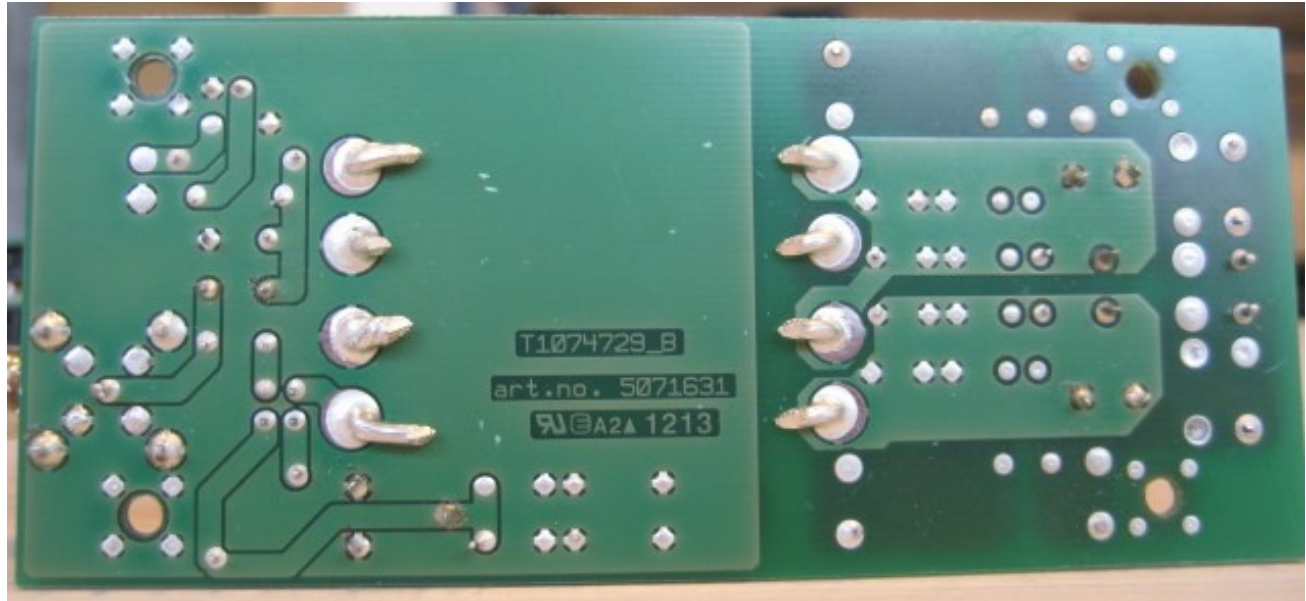
4.4 Match pcb

4.4.1 Component side



Description of EUT: Inductive RFID card Reader operating on 13.56 MHz
Manufacturer: N.V. Nederlandse Apparatenfabriek "Nedap"
Brand mark: Nedap
Model: ECO READER 4
FCC ID: CGDECO41356
IC: 1444A- ECO41356
Type of Service: New Application

4.4.2 Solder side



5 Shelf pcb match

5.1 Not opened enclosure shielded shelf



Match PCB same as unshielded

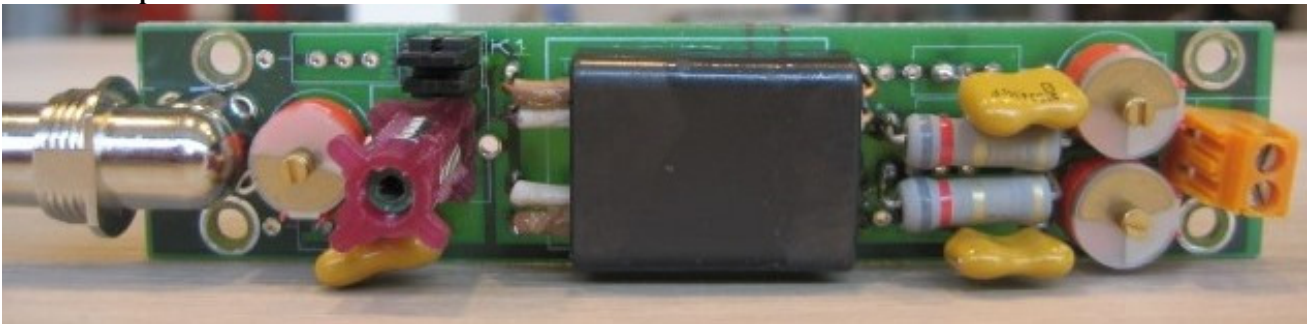
Description of EUT: Inductive RFID card Reader operating on 13.56 MHz
Manufacturer: N.V. Nederlandse Apparatenfabriek "Nedap"
Brand mark: Nedap
Model: ECO READER 4
FCC ID: CGDECO41356
IC: 1444A- ECO41356
Type of Service: New Application

5.2 Opened unshielded shelf PCB



5.3 Match PCB

5.3.1 Component side



5.3.2 Solder side

