
**Inductive Proximity Card reader
Brand Nedap
Model Convexs M80
Interior Photographs**

Description of EUT: Inductive Proximity Cardreader
Manufacturer: N.V. Nederlandse Apparatenfabriek "Nedap"
Brand mark: Nedap
Model: Convexs M80

Description of item

Description of EUT : Inductive Proximity Card reader
Manufacturer : N.V. Nederlandsche Apparatenfabriek "Nedap"
Brand : Nedap
Model : Convexs M80
FCC ID : CGDSCONVEXSM

Applicant information

Applicant's representative : Mr. Jacques Hulshof
Company : N.V. Nederlandsche Apparatenfabriek "Nedap"
Address : Parallelweg 2
Postal code : 7141 DC
City : Groenlo
PO-box : 6
Postal code : 7140 AA
City : Groenlo
Country : The Netherlands
Telephone number : +31 (0) 544 471111
Telefax number : +31 (0) 544 463475

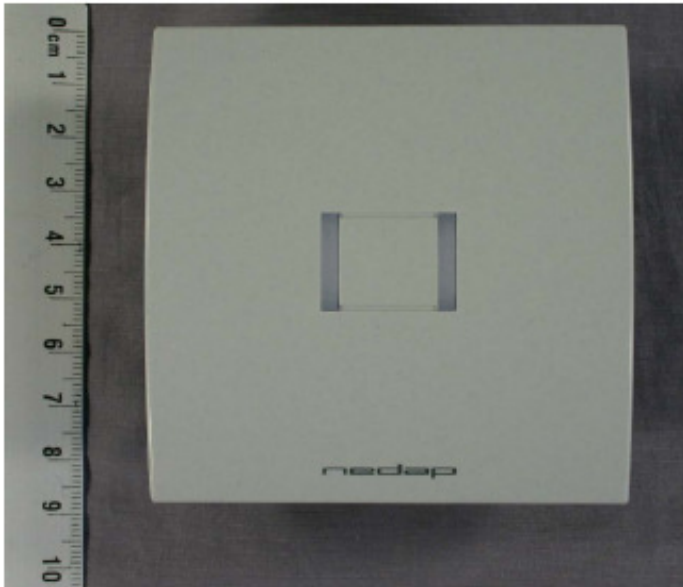
17 June 2011

Table of contents

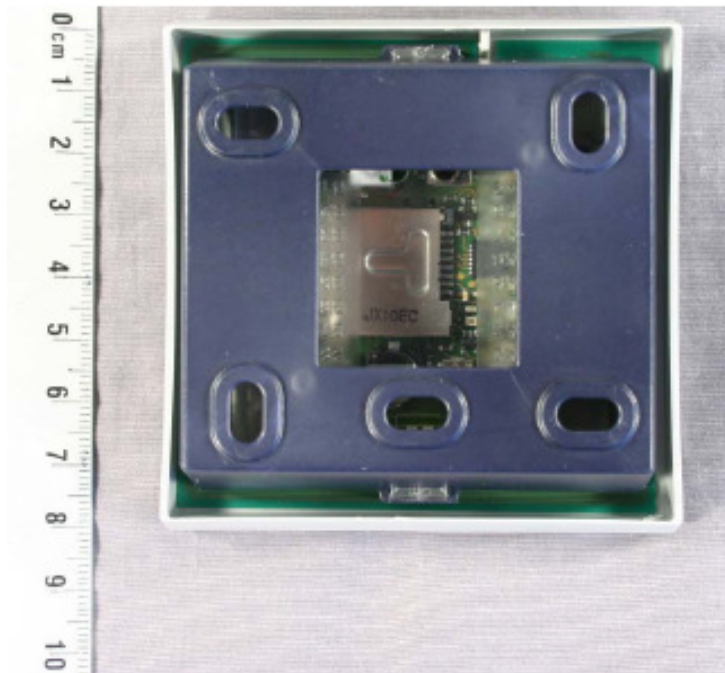
1	PHOTOGRAPHS OF THE CONVEXS M80.....	4
1.1	FRONT VIEW	4
1.2	REAR VIEW	4
2	INTERIOR PHOTOGRAPHS OF THE CONVEXS M80.....	5
2.1	INTERNAL VIEW 1	5
2.2	INTERNAL VIEW 3	5
2.3	INTERNAL VIEW SHIELDING REMOVED	6
2.4	ANTENNA SHAPE COMPONENT SIDE WITH FRAME	6
2.5	ANTENNA COMPONENT SIDE	7
2.6	ANTENNA SHAPE SOLDER SIDE	7

1 Photographs of the Convexs M80

1.1 Front view

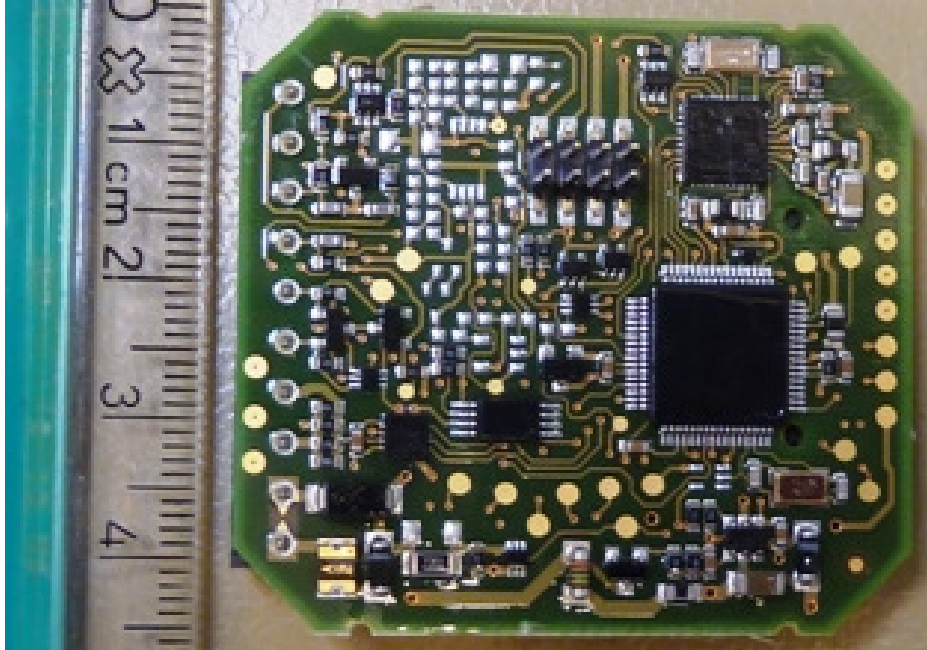


1.2 Rear view



2 Interior photographs of the Convexs M80

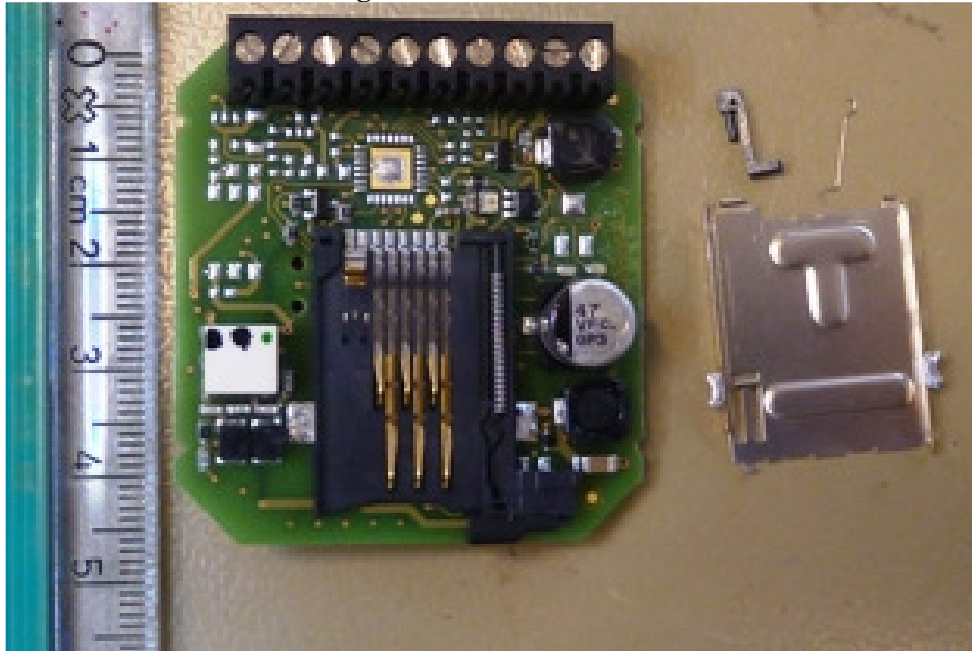
2.1 Internal view 1



2.2 Internal view 3



2.3 Internal view shielding removed



2.4 Antenna shape component side with frame



2.5 Antenna component side



2.6 Antenna shape solder side

