
**Inductive Proximity Card reader
Brand Nedap
Model Convexs MND80G
Interior Photographs**

Description of EUT: Inductive Proximity Cardreader
Manufacturer: N.V. Nederlandse Apparatenfabriek "Nedap"
Brand mark: Nedap
Model: Convexs MND80G

Description of item

Description of EUT : Inductive Proximity Card reader
Manufacturer : N.V. Nederlandsche Apparatenfabriek "Nedap"
Brand : Nedap
Model : Convexs MND80G
FCC ID : CGDSCONVEXS

Applicant information

Applicant's representative : Mr. Jacques Hulshof
Company : N.V. Nederlandsche Apparatenfabriek "Nedap"
Address : Parallelweg 2
Postal code : 7141 DC
City : Groenlo
PO-box : 6
Postal code : 7140 AA
City : Groenlo
Country : The Netherlands
Telephone number : +31 (0) 544 471111
Telefax number : +31 (0) 544 463475

19 January 2011

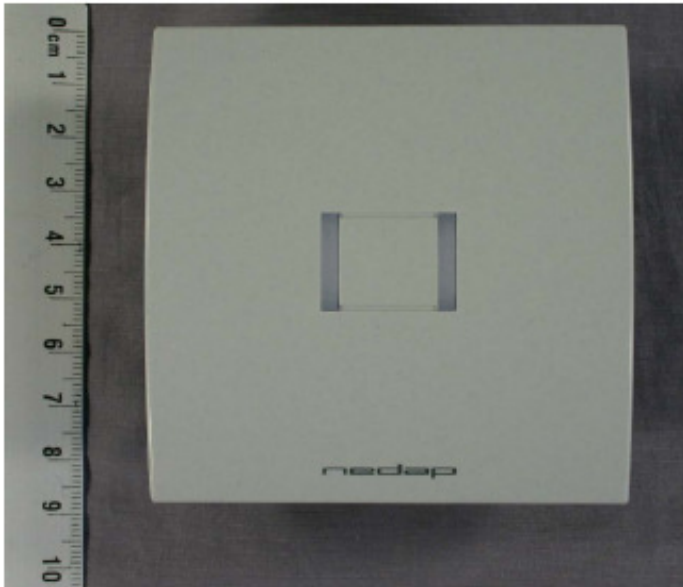
Revised March 25, 2011. Photographs added

Table of contents

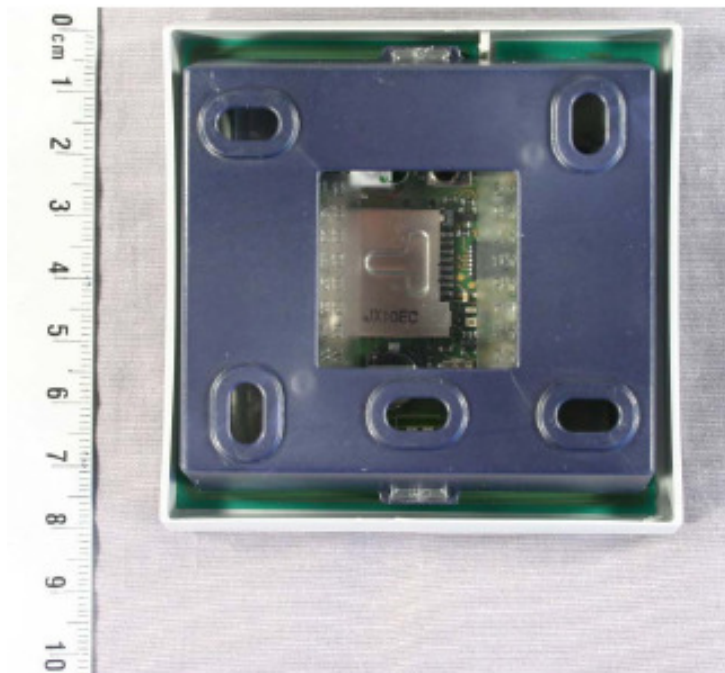
1	PHOTOGRAPHS OF THE CONVEXS MN80	4
1.1	FRONT VIEW	4
1.2	REAR VIEW	4
1.3	INTERNAL VIEW 1	5
1.4	INTERNAL VIEW 2	5
1.5	INTERNAL VIEW 3	6
1.6	SHIELDING REMOVED	6
1.7	ANTENNA SHAPE COMPONENT SIDE	7
1.8	ANTENNA SHAPE SOLDER SIDE	7

1 Photographs of the Convexs MN80

1.1 Front view

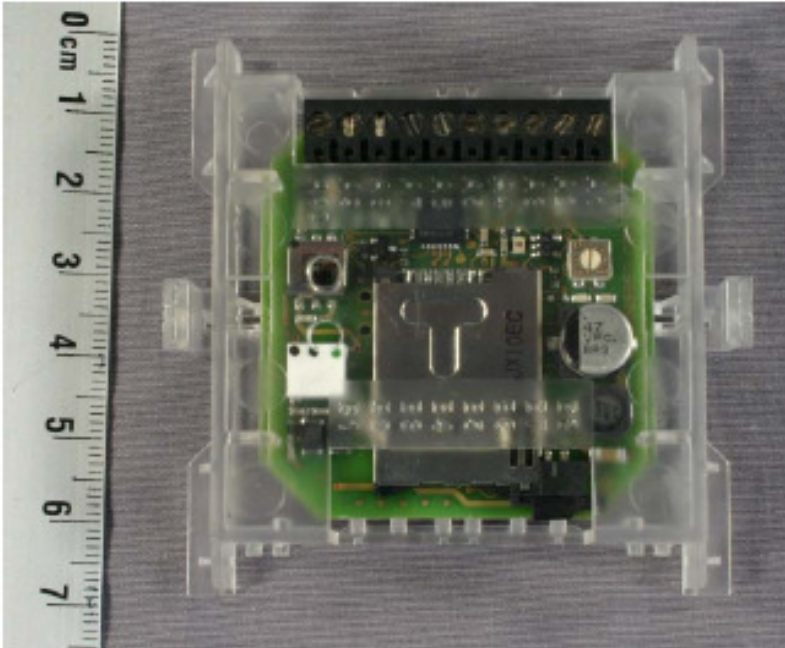


1.2 Rear view

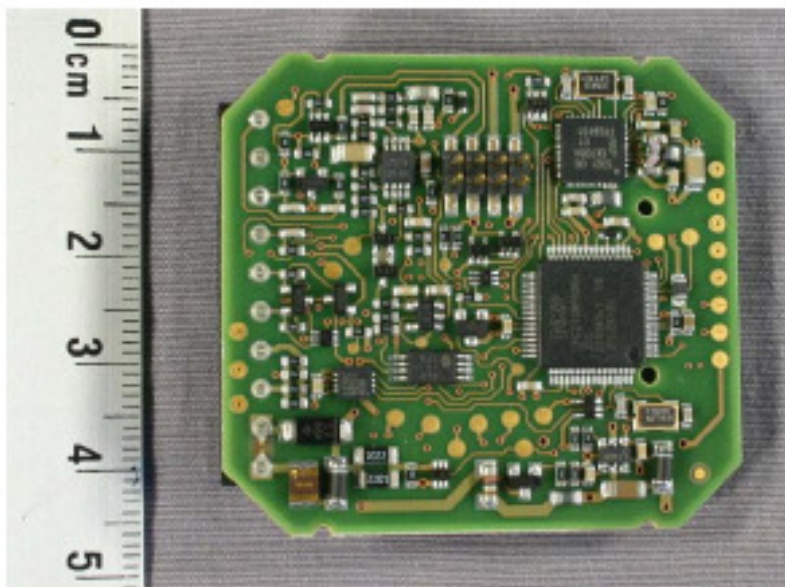


Internal view 1

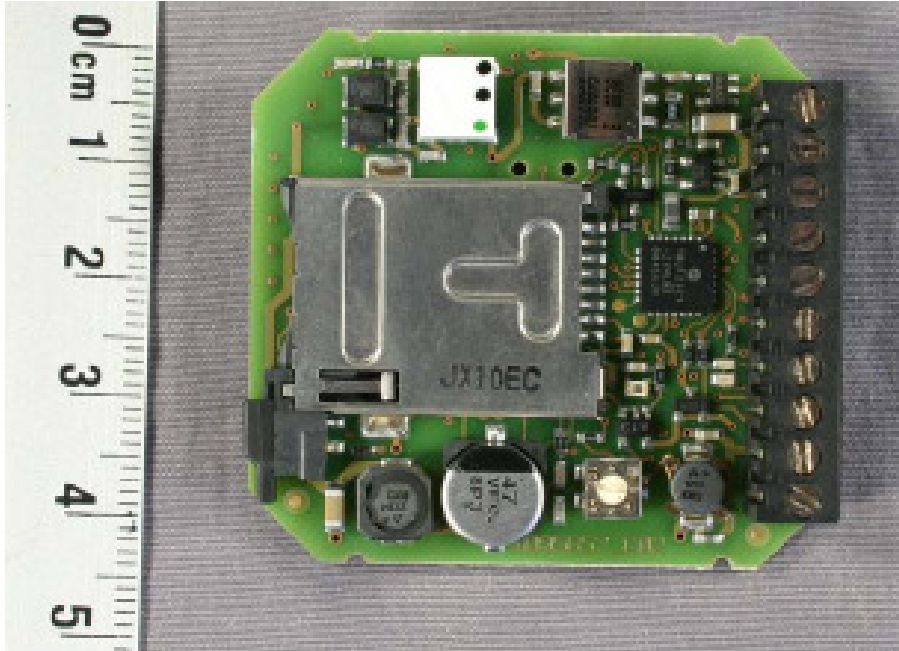
1.3 Internal view 1



1.4 Internal view 2

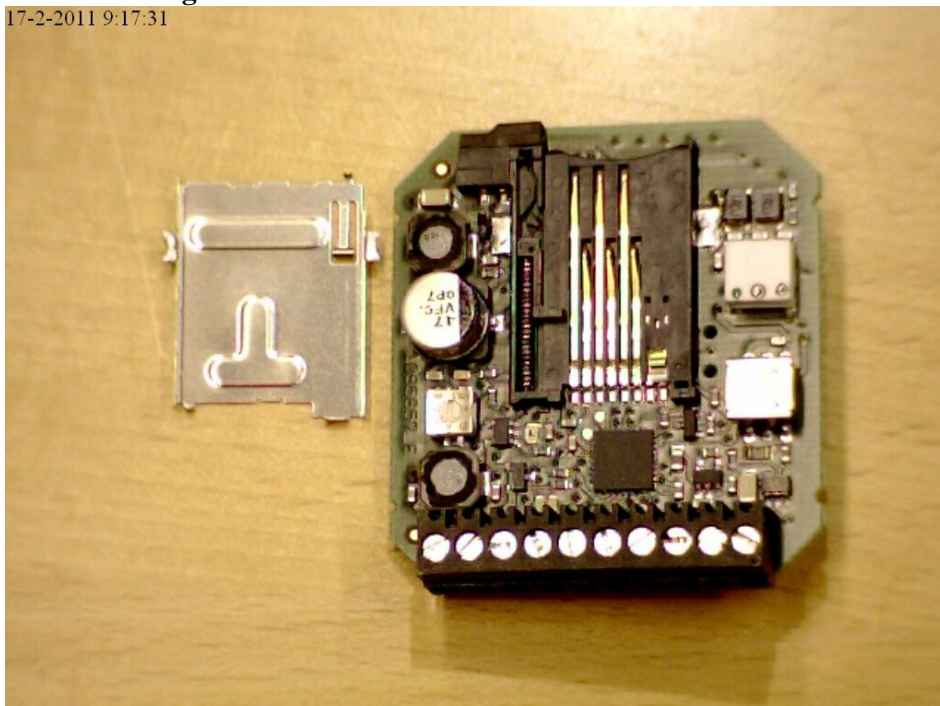


1.5 Internal view 3

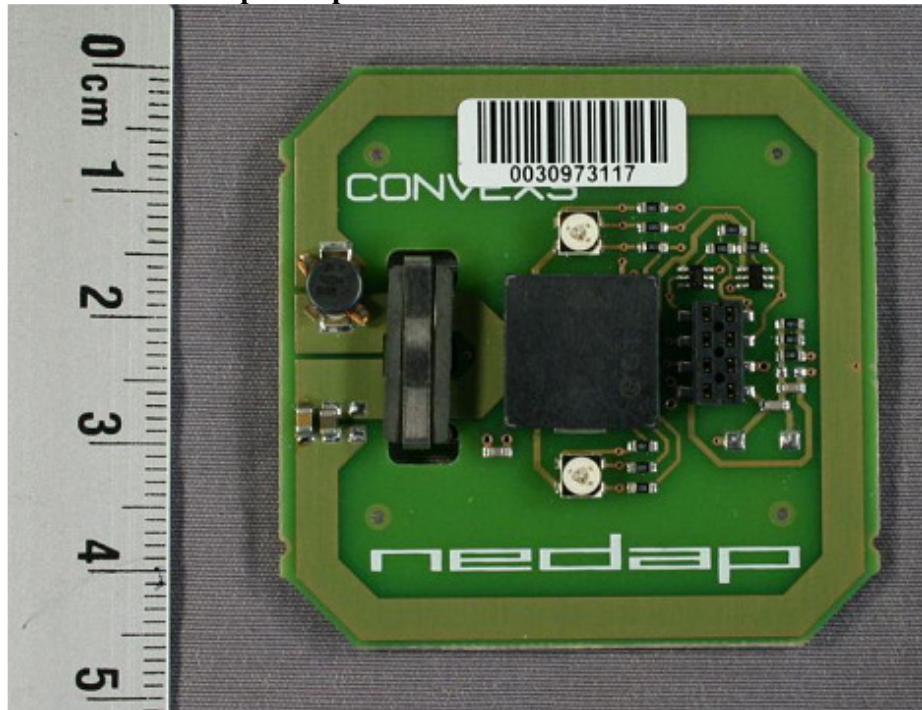


1.6 Shielding removed

17-2-2011 9:17:31



1.7 Antenna shape component side



1.8 Antenna shape solder side

