

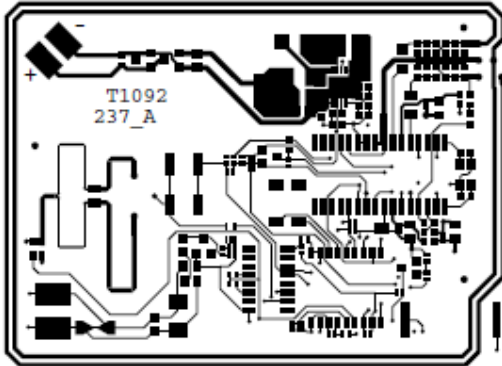
Groenlo, 08 June 2012

Antenna information

Description : 13.56 MHz Proximity Inductive Card Reader
FCC ID : CGDBOOSTER7
IC : 1444A-BOOSTER7
Manufacturer : N.V. Nederlandsche Apparatenfabriek "Nedap"
Brand : Nedap
Models : Smartcard Booster 2G, Smartcard Booster Cardax 2G

1. 13.56 MHz antenna
Type : Inductive O-Antenna
Material : Copper on Printed Circuit Board
Thickness : 35 µm
Number of turns : 2 times 2
Inner square : 38 by 45 mm
Outer square : 42 by 49 mm

See diagrams below



N.V. Nederlandsche Apparatenfabriek "Nedap"
Parallelweg 2
NL-7141 DC Groenlo
P.O. Box 6
NL-7140 AC Groenlo

T +31 (0)544 471 111
F +31 (0) 544 463 475
E info@nedap.com
www.nedap.com

Traderegister 08013836
ABN-AMRO 59.16.32.330
IBAN NL83ABNA0591632330
BIC ABNANL2A
VAT NL006456285B01

2. 2.45 GHz antenna
Type : Patch Antenna on Printed Circuit Board
Material : Copper
Thickness : 18 μ m
Dimensions : 28 by 28 mm
See diagram below



NOTE:

This device has no 2.45 GHz transmitter. The Boosters consists of a battery powered 13.56 MHz transmitter and a battery operated 2.45 GHz back scatter tag. As shown in the block diagram there is an air interface between the tag and a reader operating on 2.45 GHz

Jacques Hulshof

