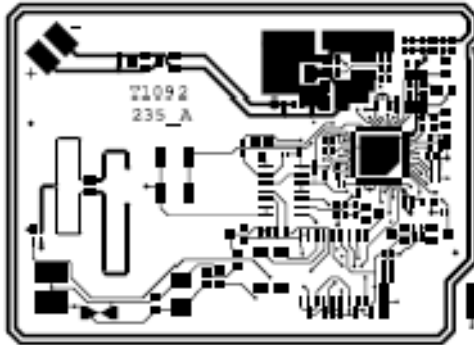


Antenna Information

Description : 13.56 MHz kHz Proximity Inductive Card Reader
FCC ID : CGDBOOSTER6
IC : 1444A-BOOSTER6
Manufacturer : N.V. Nederlandsche Apparatenfabriek "Nedap"
Brand : Nedap
Model : Smartcard Booster LEGIC 2G

1. 13.56 MHz antenna
 - Type : Inductive O-Antenna
 - Material : Copper on Printed Circuit Board
 - Thickness : 18 μ m
 - Number of turns : 2
 - Inner square : 73 by 53 mm
 - Outer square : 69 by 49 mm




Jacques Hulshof