
**Proximity Card Reader
operating on 13560 and 120/13560 kHz
Brand Nedap
Model Smartcard Booster 2G series
Interior Photographs**

Description of EUT: Proximity Card Reader 13560 and 13560/120 kHz
Manufacturer: N.V. Nederlandse Apparatenfabriek "Nedap"
Brand mark: Nedap
Model: Smarcard Booster 2G series
FCC ID: CGDBOOSTER5
IC: 1444A-BOOSTER5

Description of item

Description of EUT : Proximity Card Reader operating on 13560 and 120/13560 kHz
Manufacturer : N.V. Nederlandsche Apparatenfabriek "Nedap"
Brand : Nedap
Models : Transition Booster 2G, Smartcard Booster 2G, Smartcard Booster Cardax 2G
FCC ID : CGDBOOSTER5
IC : 1444A-BOOSTER5

Applicant information

Applicant's representative : Mr. Jacques Hulshof
Company : N.V. Nederlandsche Apparatenfabriek "Nedap"
Address : Parallelweg 2
Postal code : 7141 DC
City : Groenlo
PO-box : 6
Postal code : 7140 AA
City : Groenlo
Country : The Netherlands
Telephone number : +31 (0) 544 471111
Telefax number : +31 (0) 544 463475

12 August 2011

Description of EUT: Proximity Card Reader 13560 and 13560/120 kHz
Manufacturer: N.V. Nederlandse Apparatenfabriek "Nedap"
Brand mark: Nedap
Model: Smarcard Booster 2G series
FCC ID: CGDBOOSTER5
IC: 1444A-BOOSTER5

Table of contents

1	OVERVIEW OF THE BOOSTER5 ENCLOSURE	4
1.1	FRONT SIDE	4
1.2	BOTTOM SIDE	4
2	INTERNAL COMPONENTS	4
2.1	COVER DELETED	4
2.2	THE 13.56 ADD ADD ON PCB BACK SIDE	5
2.3	COMPONENT SIDE 13.56 MHz PCB	5
2.4	THE 120 kHz PCB IN HOUSING	6
2.5	THE 120 kHz PCB IN HOUSING COIL REMOVED	6
2.6	BACK SIDE OF THE 120 kHz PCB AND ENCLOSURE	7
2.7	BACK SIDE OF THE 120 kHz PCB	7

Description of EUT: Proximity Card Reader 13560 and 13560/120 kHz
Manufacturer: N.V. Nederlandse Apparatenfabriek "Nedap"
Brand mark: Nedap
Model: Smarcard Booster 2G series
FCC ID: CGDBOOSTER5
IC: 1444A-BOOSTER5

1 Overview of the Booster5 enclosure

1.1 Front side



1.2 Bottom side



2 Internal components

2.1 Cover deleted



Description of EUT: Proximity Card Reader 13560 and 13560/120 kHz
Manufacturer: N.V. Nederlandse Apparatenfabriek "Nedap"
Brand mark: Nedap
Model: Smarcard Booster 2G series
FCC ID: CGDBOOSTER5
IC: 1444A-BOOSTER5

2.2 The 13.56 MHz add on PCB back side



2.3 Component side 13.56 MHz PCB



Description of EUT: Proximity Card Reader 13560 and 13560/120 kHz
Manufacturer: N.V. Nederlandse Apparatenfabriek "Nedap"
Brand mark: Nedap
Model: Smarcard Booster 2G series
FCC ID: CGDBOOSTER5
IC: 1444A-BOOSTER5

2.4 The 120 kHz PCB in housing

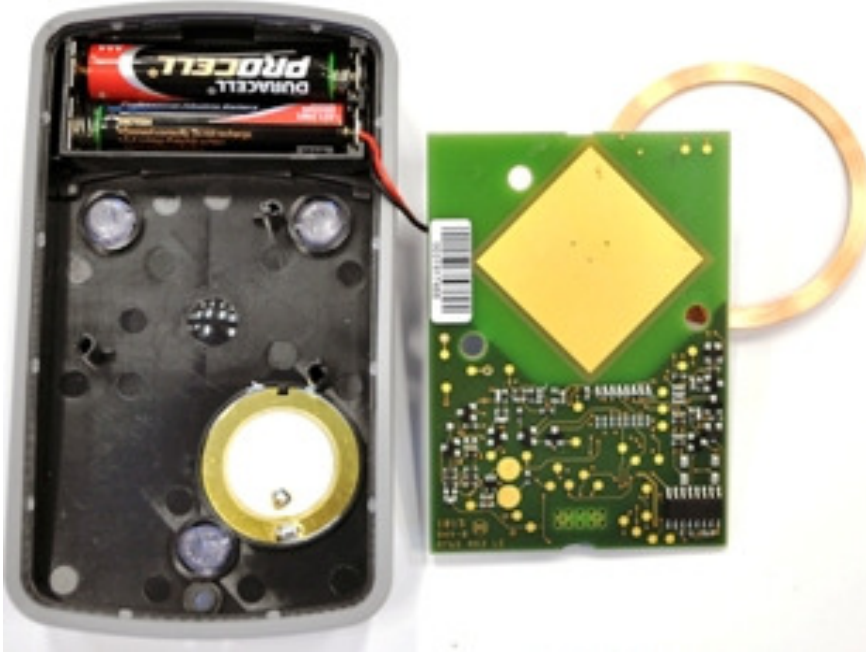


2.5 The 120 kHz PCB in housing coil removed



Description of EUT: Proximity Card Reader 13560 and 13560/120 kHz
Manufacturer: N.V. Nederlandse Apparatenfabriek "Nedap"
Brand mark: Nedap
Model: Smarcard Booster 2G series
FCC ID: CGDBOOSTER5
IC: 1444A-BOOSTER5

2.6 Back side of the 120 kHz PCB and enclosure



2.7 Back side of the 120 kHz PCB

