

**INTERIOR PHOTOGRAPHS OF AN INDUCTIVE
PROXIMITY CARD READER, BRAND NEDAP,
MODEL SMARTCARD/TRANSITION-BOOSTER**

FCC listed : 90828
Industry Canada : IC3501

TNO Electronic Products & Services (EPS) B.V.
P.O. Box 15
9822 ZG Niekerk (NL)
Smidshornerweg 18
9822 TL Niekerk (NL)

Telephone: +31 594 505005
Telefax: +31 594 504804

E-mail: info@tno-eps.com



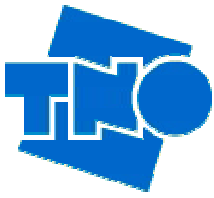
Description of EUT: Inductive proximity card reader
Manufacturer: N.V. Nederlandsche Apparatenfabriek "NEDAP"
Brand mark: Nedap
Model: Smartcard/Transition-Booster

Description of test item

Test item : Inductive proximity card reader (13.56 MHz) and (120 - 125 kHz)
Manufacturer : N.V. Nederlandsche Apparatenfabriek "NEDAP"
Brand : Nedap
Model : Smartcard/Transition-Booster
Serial number(s) : Not available
Revision : Not available
Receipt date : January 25, 2007

Applicant information

Applicant's representative : Mr. J. Hulshof
Company : N.V. Nederlandsche Apparatenfabriek "NEDAP"
Address : Parallelweg 2
Postal code : 7141 DC
City : Groenlo
PO-box : 6
Postal code : 7140 AA
City : Groenlo
Country : The Netherlands
Telephone number : +31 (0) 544 471111
Telefax number : +31 (0) 544 463475



Description of EUT: Inductive proximity card reader
Manufacturer: N.V. Nederlandsche Apparatenfabriek "NEDAP"
Brand mark: Nedap
Model: Smartcard/Transition-Booster

Table of contents

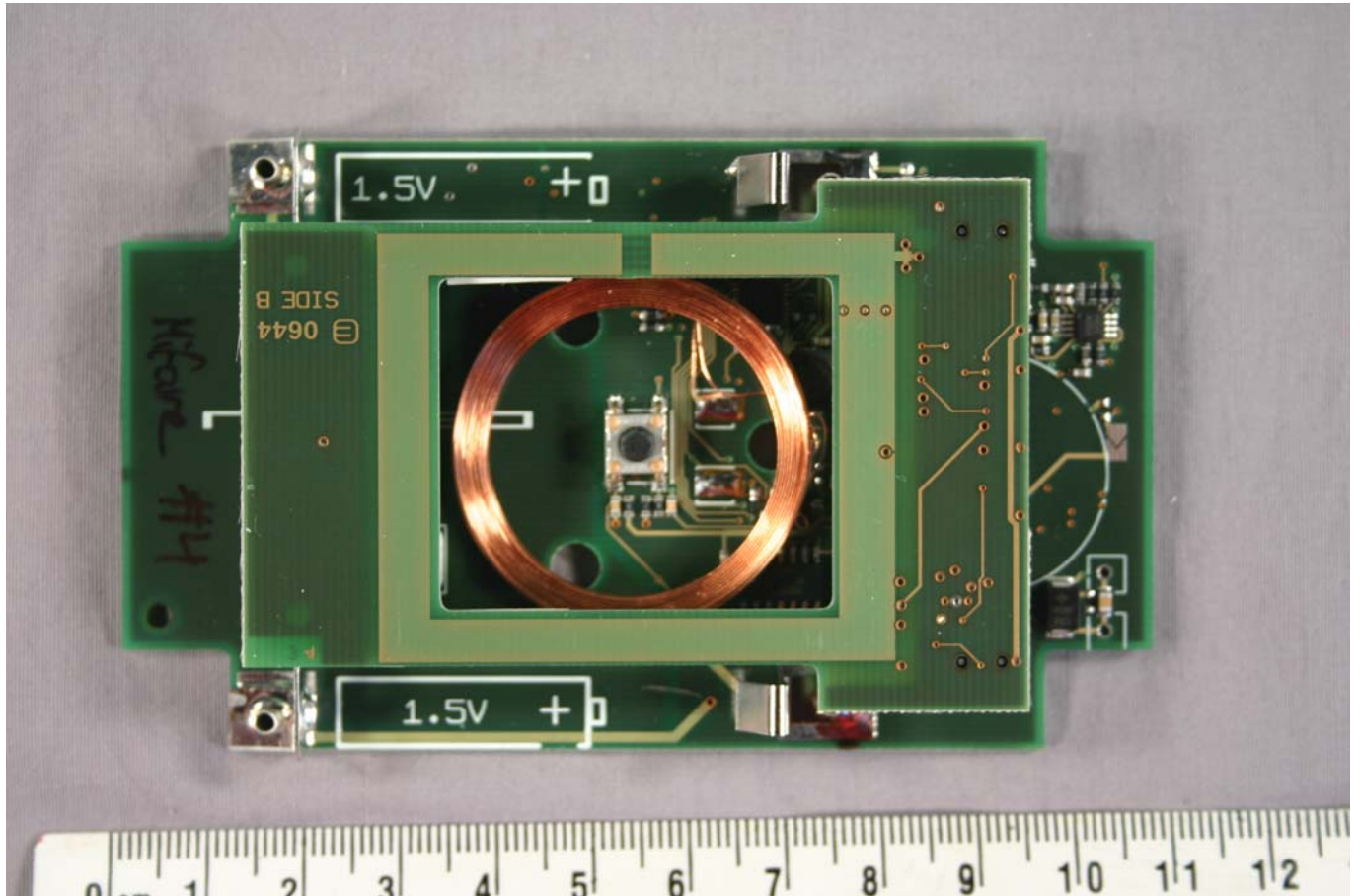
1	Photographs of the equipment	4
1.1	Smartcard/Transition-Booster internal view 1	4
1.2	Smartcard/Transition-Booster internal view 2	5
1.3	Smartcard/Transition-Booster internal view 3	6
1.4	Smartcard/Transition-Booster internal view 4	7
1.5	Smartcard/Transition-Booster internal view 5	8
1.6	Smartcard/Transition-Booster internal view 6	9

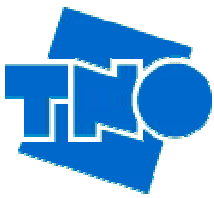
1 Photographs of the equipment

1.1 Smartcard/Transition-Booster internal view 1



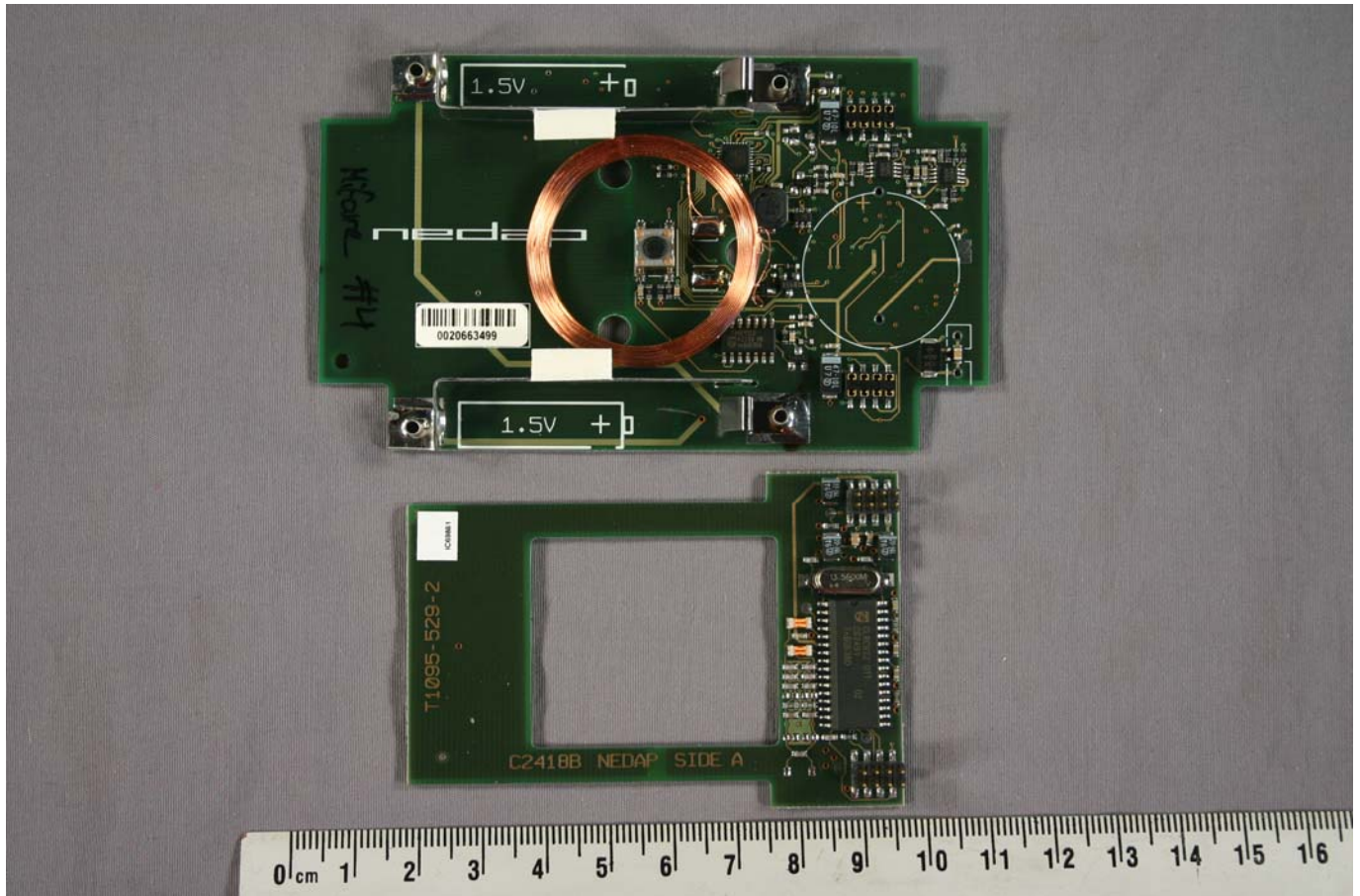
1.2 Smartcard/Transition-Booster internal view 2



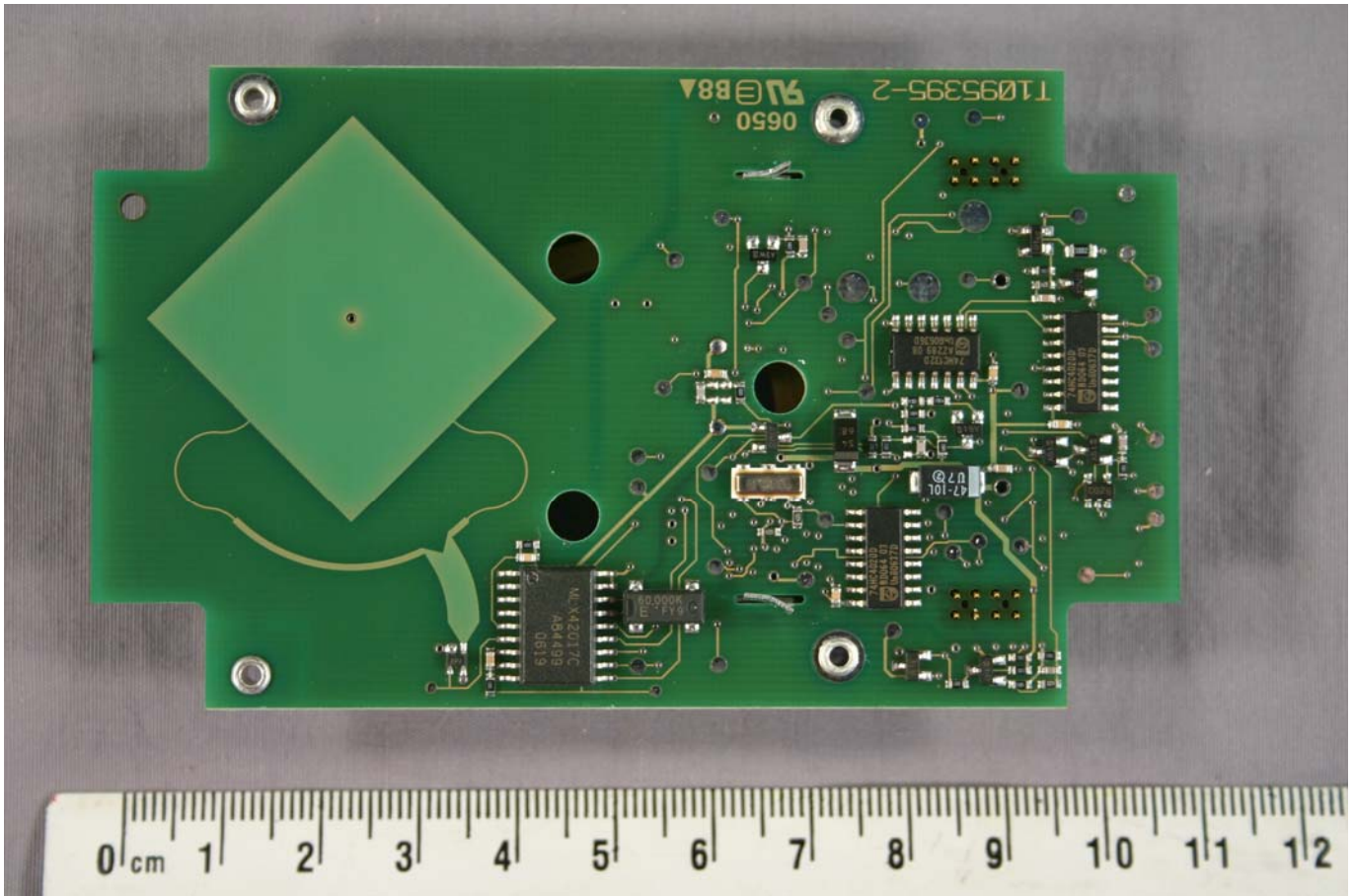


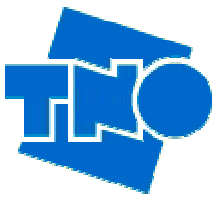
Description of EUT: Inductive proximity card reader
Manufacturer: N.V. Nederlandsche Apparatenfabriek "NEDAP"
Brand mark: Nedap
Model: Smartcard/Transition-Booster

1.3 Smartcard/Transition-Booster internal view 3



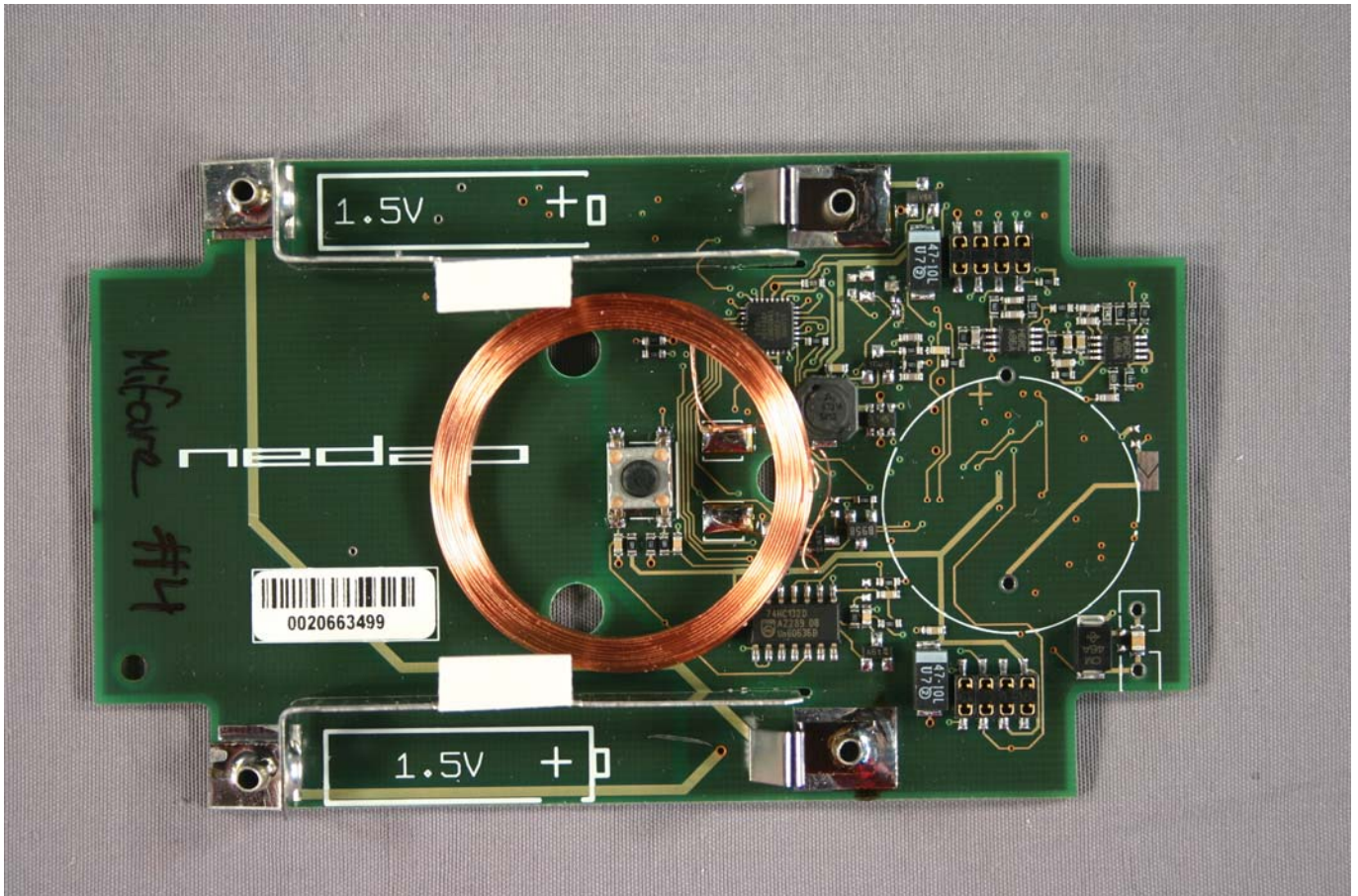
1.4 Smartcard/Transition-Booster internal view 4

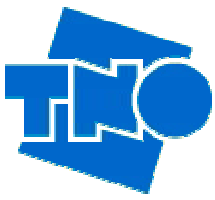




Description of EUT: Inductive proximity card reader
Manufacturer: N.V. Nederlandsche Apparatenfabriek "NEDAP"
Brand mark: Nedap
Model: Smartcard/Transition-Booster

1.5 Smartcard/Transition-Booster internal view 5





Description of EUT: Inductive proximity card reader
Manufacturer: N.V. Nederlandsche Apparatenfabriek "NEDAP"
Brand mark: Nedap
Model: Smartcard/Transition-Booster

1.6 Smartcard/Transition-Booster internal view 6

