
**Long-range vehicle and driver identification tag
operating on 433 MHz and 13.56 MHz
Brand Nedap
Model: LEGIC BOOSTER ULTIMATE
Interior Photographs**

Description of EUT: Long-range vehicle and driver identification tag
operating on 433 MHz and 13.56 MHz
Manufacturer: Nedap N.V.
Brand mark: Nedap
Model: LEGIC BOOSTER ULTIMATE
FCC ID: CGDBOOSTER11
IC: 1444A-BOOSTER11
Type of Application: New Application

Description of item

Description of EUT : Long-range vehicle and driver identification Tag operating on 433 MHz and
13.56 MHz
Manufacturer : Nedap N.V.
Brand : Nedap
Model : LEGIC BOOSTER ULTIMATE
FCC ID : CGDBOOSTER11
IC : 1444A-BOOSTER11
Type of Service : New Application

Applicant information

Applicant's representative : Rene Waenink (Mr.)
Company : Nedap N.V.
Address : Parallelweg 2
Postal code : 7141 DC
City : Groenlo
PO-box : 6
Postal code : 7140 AA
City : Groenlo
Country : The Netherlands
Telephone number : +31 (0) 544 471111
Telefax number : +31 (0) 544 463475

11 August 2020

Description of EUT: Long-range vehicle and driver identification tag
operating on 433 MHz and 13.56 MHz
Manufacturer: Nedap N.V.
Brand mark: Nedap
Model: LEGIC BOOSTER ULTIMATE
FCC ID: CGDBOOSTER11
IC: 1444A-BOOSTER11
Type of Application: New Application

Table of contents

1	TOTAL OVERVIEW	4
2	CASE OPENED.....	4
2.1	BATTERIES	4
2.2	PHOTOGRAPH OF PCB IN ENCLOSURE	5
2.3	OPEN CASE WITHOUT PRINTED CIRCUIT BOARD.....	5
3	PRINTED CIRCUIT BOARDS WITH BATTERY CONNECTION	6
3.1	FRONT SIDE	6
3.2	BACK SIDE.....	6
4	PRINTED CIRCUIT BOARD	7
4.1	FRONT SIDE	7
4.2	BACK SIDE.....	8

Description of EUT: Long-range vehicle and driver identification tag operating on 433 MHz and 13.56 MHz
Manufacturer: Nedap N.V.
Brand mark: Nedap
Model: LEGIC BOOSTER ULTIMATE
FCC ID: CGDBOOSTER11
IC: 1444A-BOOSTER11
Type of Application: New Application

1 Total overview



2 Case opened

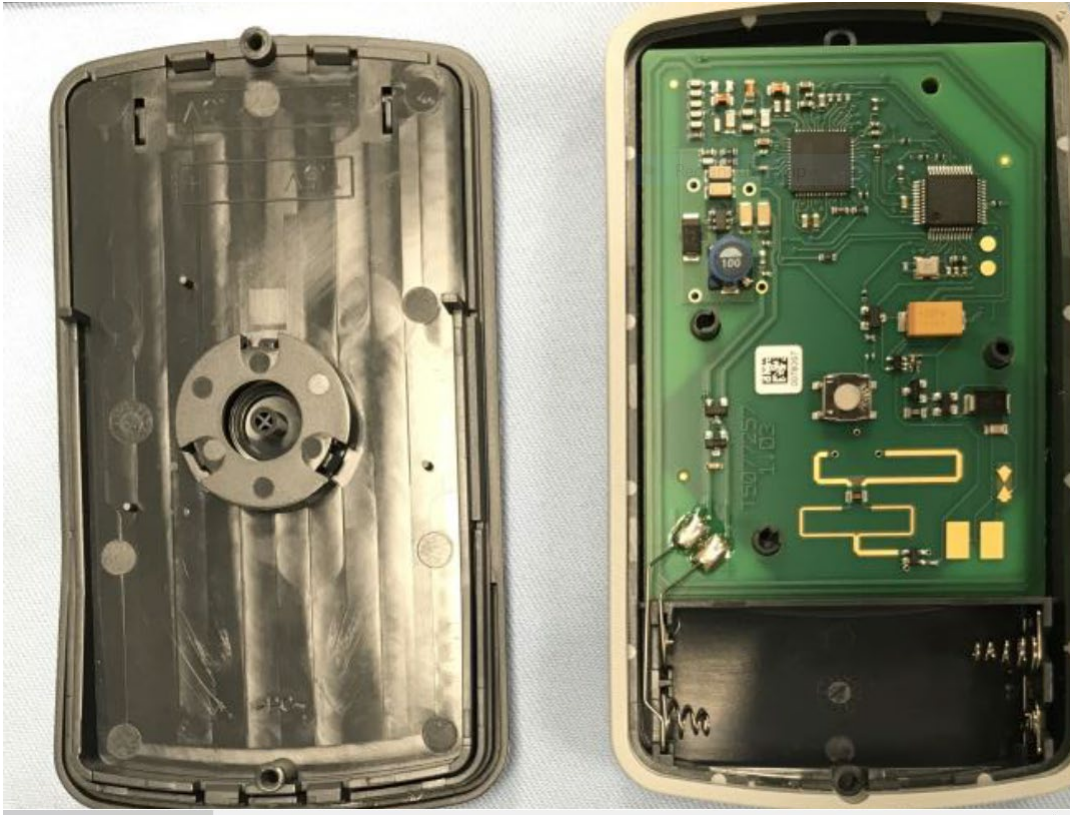
2.1 Batteries



NOTE: For label artwork see 10_Label location_Artwork CGDBOOSTER11 and 1444A-BOOSTER11

Description of EUT: Long-range vehicle and driver identification tag operating on 433 MHz and 13.56 MHz
Manufacturer: Nedap N.V.
Brand mark: Nedap
Model: LEGIC BOOSTER ULTIMATE
FCC ID: CGDBOOSTER11
IC: 1444A-BOOSTER11
Type of Application: New Application

2.2 Photograph of PCB in enclosure



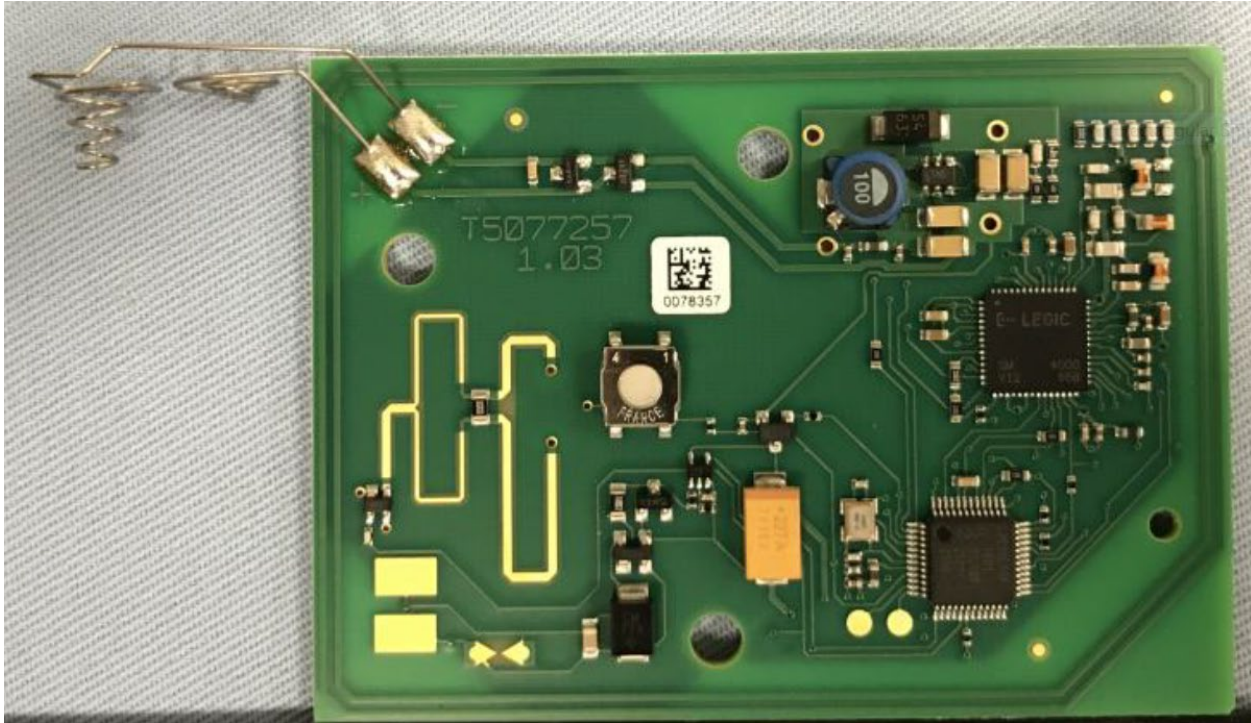
2.3 Open case without Printed Circuit board



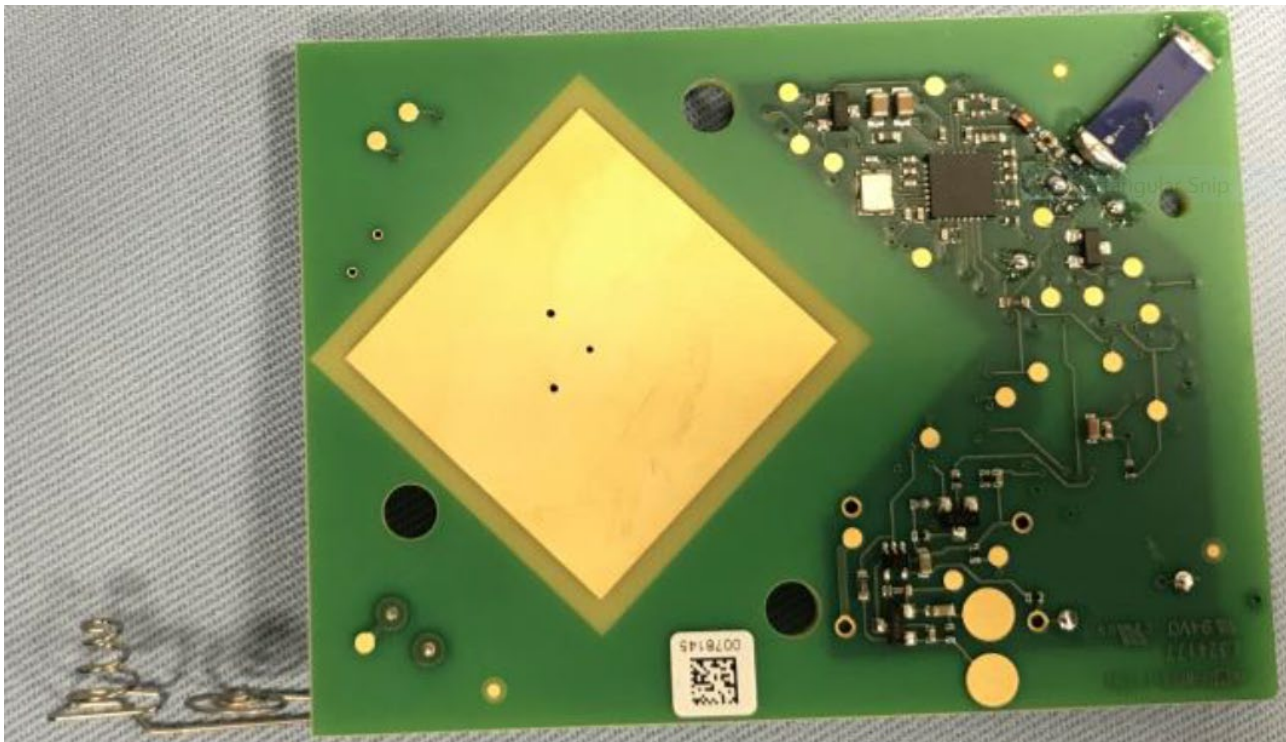
Description of EUT: Long-range vehicle and driver identification tag
operating on 433 MHz and 13.56 MHz
Manufacturer: Nedap N.V.
Brand mark: Nedap
Model: LEGIC BOOSTER ULTIMATE
FCC ID: CGDBOOSTER11
IC: 1444A-BOOSTER11
Type of Application: New Application

3 Printed Circuit boards with battery connection

3.1 Front side



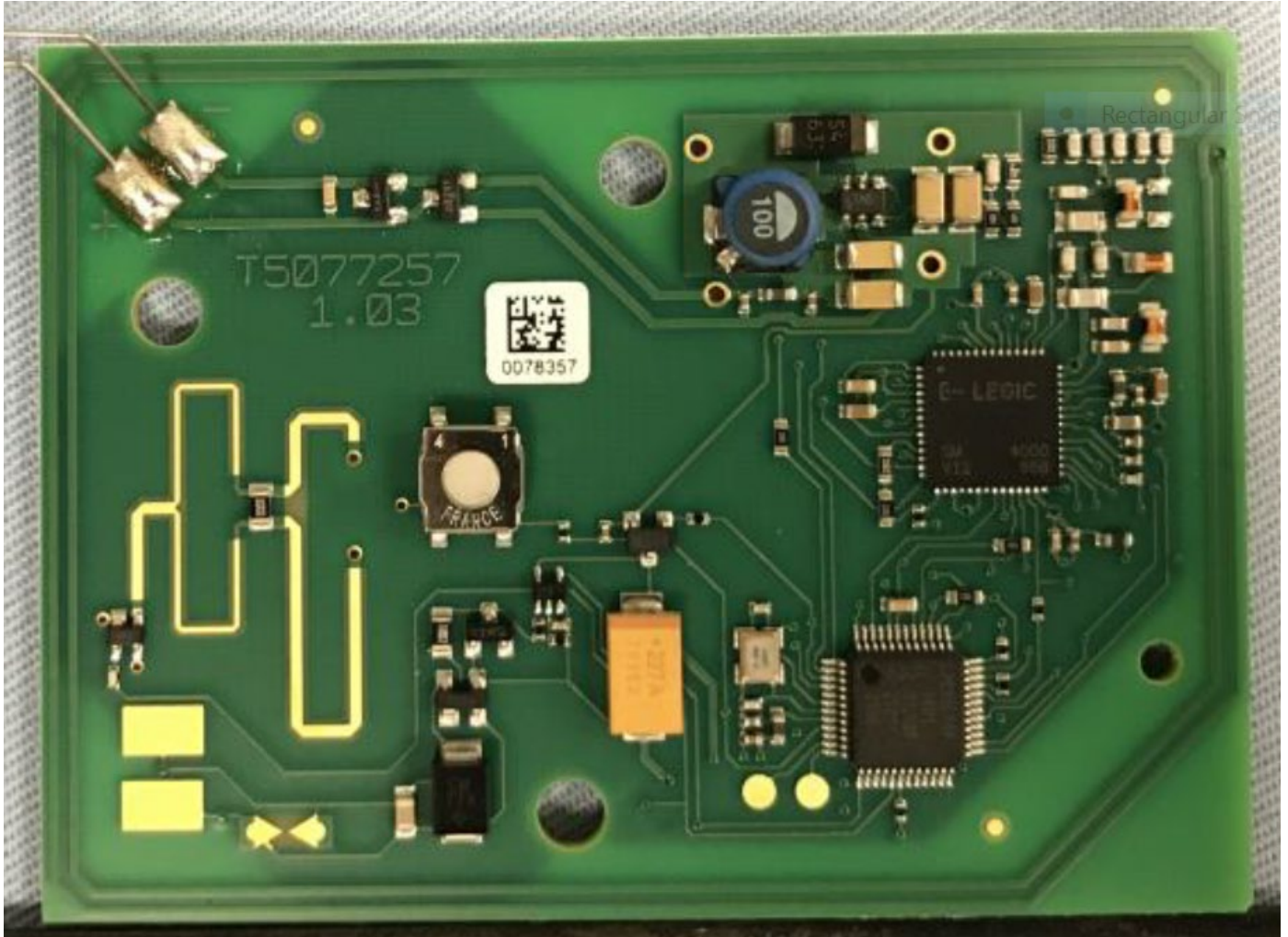
3.2 Back side



Description of EUT: Long-range vehicle and driver identification tag
operating on 433 MHz and 13.56 MHz
Manufacturer: Nedap N.V.
Brand mark: Nedap
Model: LEGIC BOOSTER ULTIMATE
FCC ID: CGDBOOSTER11
IC: 1444A-BOOSTER11
Type of Application: New Application

4 Printed circuit board

4.1 Front side



Description of EUT: Long-range vehicle and driver identification tag
operating on 433 MHz and 13.56 MHz
Manufacturer: Nedap N.V.
Brand mark: Nedap
Model: LEGIC BOOSTER ULTIMATE
FCC ID: CGDBOOSTER11
IC: 1444A-BOOSTER11
Type of Application: New Application

4.2 Back side

