

---

**Long-range vehicle and driver identification tag  
operating on 433 MHz and 13.56 MHz  
Brand Nedap  
Model: SMARTCARD BOOSTER ULTIMATE  
Interior Photographs**

Description of EUT: Long-range vehicle and driver identification tag  
operating on 433 MHz and 13.56 MHz  
Manufacturer: N.V. Nederlandse Apparatenfabriek "Nedap"  
Brand mark: Nedap  
Model: SMARTCARD BOOSTER ULTIMATE  
FCC ID: CGDBOOSTER10  
IC: 1444A-BOOSTER10  
Type of Application: New Application

---

**Description of item**

Description of EUT : Long-range vehicle and driver identification Tag operating on 433 MHz and  
13.56 MHz  
Manufacturer : N.V. Nederlandsche Apparatenfabriek "Nedap"  
Brand : Nedap  
Model : SMARTCARD BOOSTER ULTIMATE  
FCC ID : CGDBOOSTER10  
IC : 1444A-BOOSTER10  
Type of Service : New Application

**Applicant information**

Applicant's representative : Mr. Jacques Hulshof  
Company : N.V. Nederlandsche Apparatenfabriek "Nedap"  
Address : Parallelweg 2  
Postal code : 7141 DC  
City : Groenlo  
PO-box : 6  
Postal code : 7140 AA  
City : Groenlo  
Country : The Netherlands  
Telephone number : +31 (0) 544 471111  
Telefax number : +31 (0) 544 463475

13 September 2015  
Revised: 13 October 2015

Description of EUT: Long-range vehicle and driver identification tag  
operating on 433 MHz and 13.56 MHz  
Manufacturer: N.V. Nederlandse Apparatenfabriek "Nedap"  
Brand mark: Nedap  
Model: SMARTCARD BOOSTER ULTIMATE  
FCC ID: CGDBOOSTER10  
IC: 1444A-BOOSTER10  
Type of Application: New Application

---

## **Table of contents**

<b>1</b>	<b>TOTAL OVERVIEW .....</b>	<b>4</b>
<b>2</b>	<b>CASE OPENED .....</b>	<b>4</b>
2.1	BATTERIES .....	4
2.2	PHOTOGRAPH OF PCB IN ENCLOSURE .....	5
2.3	OPEN CASE WITHOUT PRINTED CIRCUIT BOARD .....	5
<b>3</b>	<b>PRINTED CIRCUIT BOARDS WITH BATTERY CONNECTION .....</b>	<b>6</b>
3.1	FRONT SIDE .....	6
3.2	BACK SIDE .....	6
<b>4</b>	<b>PRINTED CIRCUIT BOARD .....</b>	<b>7</b>
4.1	FRONT SIDE .....	7
4.2	BACK SIDE .....	7

Description of EUT: Long-range vehicle and driver identification tag operating on 433 MHz and 13.56 MHz  
Manufacturer: N.V. Nederlandse Apparatenfabriek "Nedap"  
Brand mark: Nedap  
Model: SMARTCARD BOOSTER ULTIMATE  
FCC ID: CGDBOOSTER10  
IC: 1444A-BOOSTER10  
Type of Application: New Application

---

## 1 Total overview



## 2 Case opened

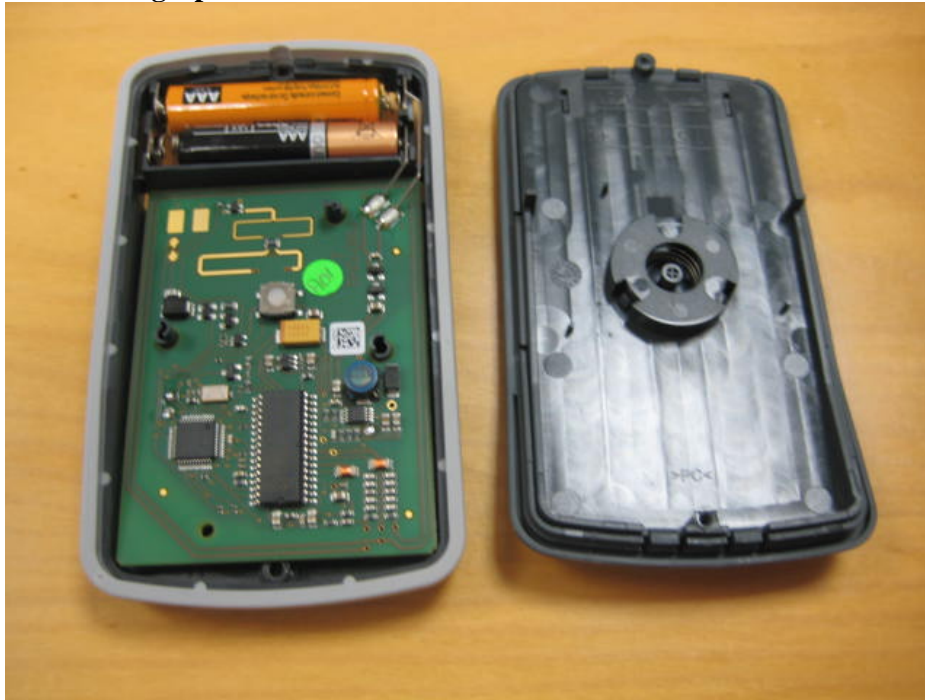
### 2.1 Batteries



Description of EUT: Long-range vehicle and driver identification tag  
operating on 433 MHz and 13.56 MHz  
Manufacturer: N.V. Nederlandse Apparatenfabriek "Nedap"  
Brand mark: Nedap  
Model: SMARTCARD BOOSTER ULTIMATE  
FCC ID: CGDBOOSTER10  
IC: 1444A-BOOSTER10  
Type of Application: New Application

---

## 2.2 Photograph of PCB in enclosure



## 2.3 Open case without Printed Circuit board

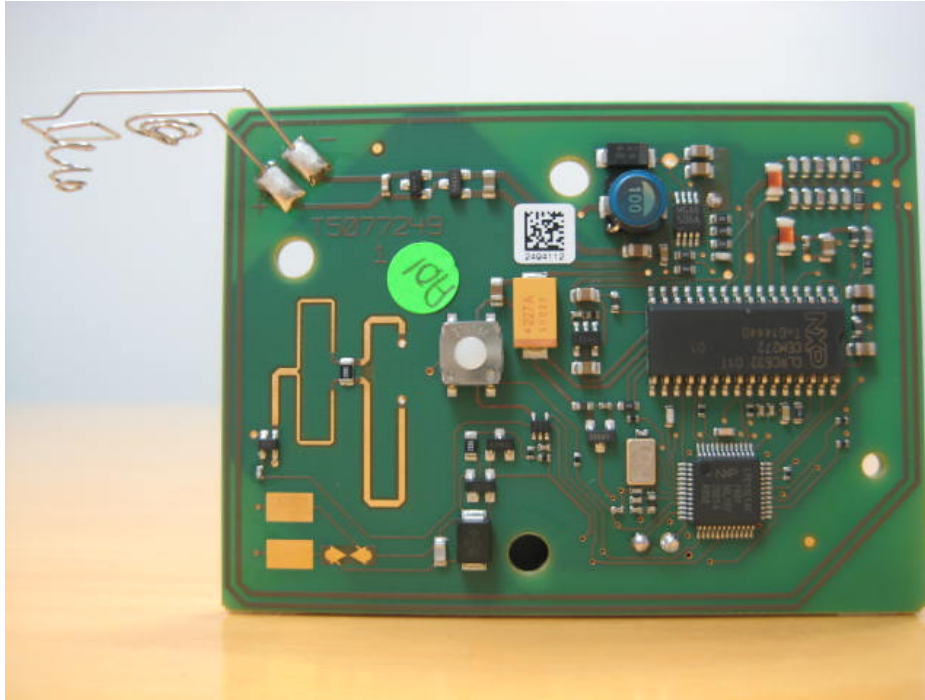


Description of EUT: Long-range vehicle and driver identification tag  
operating on 433 MHz and 13.56 MHz  
Manufacturer: N.V. Nederlandse Apparatenfabriek "Nedap"  
Brand mark: Nedap  
Model: SMARTCARD BOOSTER ULTIMATE  
FCC ID: CGDBOOSTER10  
IC: 1444A-BOOSTER10  
Type of Application: New Application

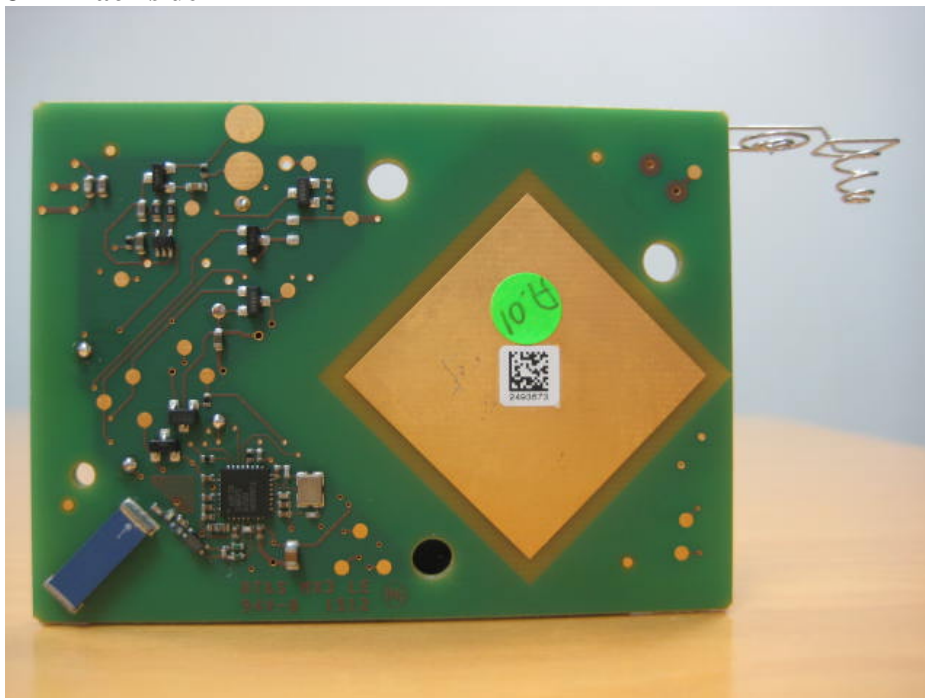
---

### 3 Printed Circuit boards with battery connection

#### 3.1 Front side



#### 3.2 Back side



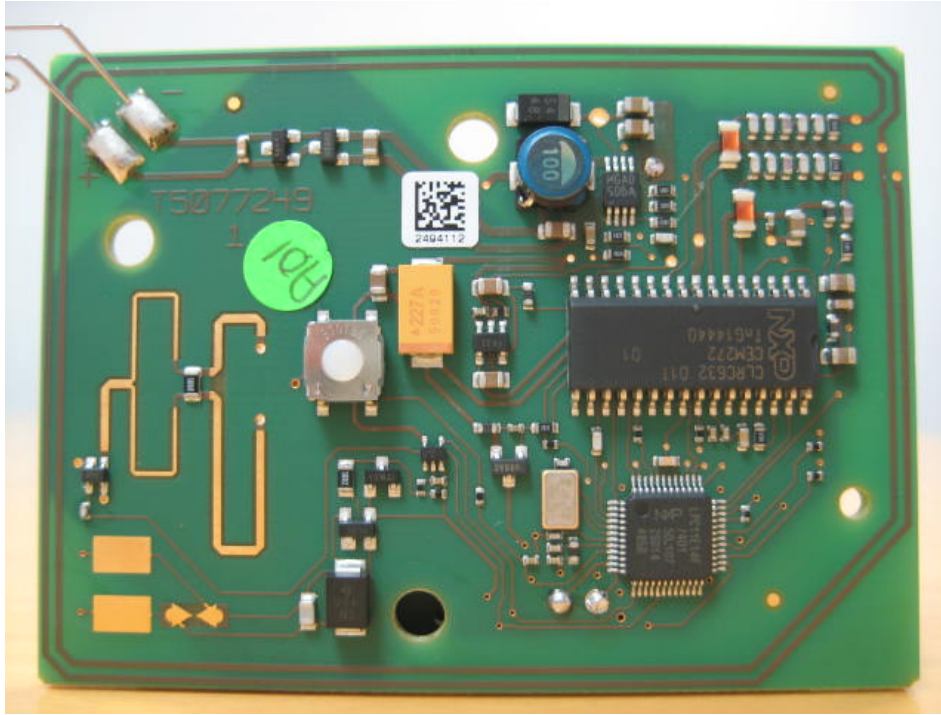


Description of EUT: Long-range vehicle and driver identification tag  
operating on 433 MHz and 13.56 MHz  
Manufacturer: N.V. Nederlandse Apparatenfabriek "Nedap"  
Brand mark: Nedap  
Model: SMARTCARD BOOSTER ULTIMATE  
FCC ID: CGDBOOSTER10  
IC: 1444A-BOOSTER10  
Type of Application: New Application

---

## 4 Printed circuit board

### 4.1 Front side



### 4.2 Back side

