

Photo report internal components

Anti-Pilferage System operating in the bands 125kHz and 7-8MHz

Brand: Nedap

Model: ASSY AD46R RF+MD

Author	RH
Date	17 September 2017
Status	final

N.V. Nederlandsche Apparatenfabriek "Nedap"

Parallelweg 2
7141 DC Groenlo
The Netherlands

Description of EUT

Description of EUT	Anti-Pilferage System operating in the band 7-8MHz
Manufacturer	Nedap N.V.
Brand	Nedap
Commercial name	Lumen iL45
Model	ASSY AD46R RF+MD
FCC ID	CGDADRRFMD
IC	1444A-ADRRFMD
Type of service	New Application

Applicant Information

Applicant's representative	Mr. Reinold Hubers
Company	N.V. Nederlandsche Apparatenfabriek "Nedap"
Address	Parallelweg 2
Postal code	7141 DC
City	Groenlo
PO Box	6
Postal code	7140 AA
City	Groenlo
Country	The Netherlands
Telephone number	+31 (0) 544 471111
Telefax number	+31 (0) 544 463475

0. CONTENTS

1. Overview AD46R RF+MD	4
2. Internal photo overview	5
2.1. Front view	5
2.2. Back view	6
2.3. LED/buzzer and customer counter top view	7
2.4. LED/buzzer and customer counter top cover removed	7
2.5. LED/buzzer and customer counter top reflector removed	7
3. Renos transmitter/receiver and controller PCB	8
3.1. Complete top view with metal covers	8
3.2. Back view with metal covers	8
3.3. Renos with covers removed	9
3.4. Renos front side PCB	9
3.5. Renos back side PCB	10
4. Antenna matching PCB	11
4.1. Front view	11
4.2. Back view	11
5. LED/buzzer and customer counter PCB	12
5.1. Front view	12
5.2. Back view	12
6. Metal detector	13
6.1. Total view with metal covers	13
6.2. Metal detector with covers removed	13
6.3. Metal detector front view PCB	14
6.4. Metal detector back view PCB	14

1. Overview AD46R RF+MD



2. Internal photo overview

2.1. Front view

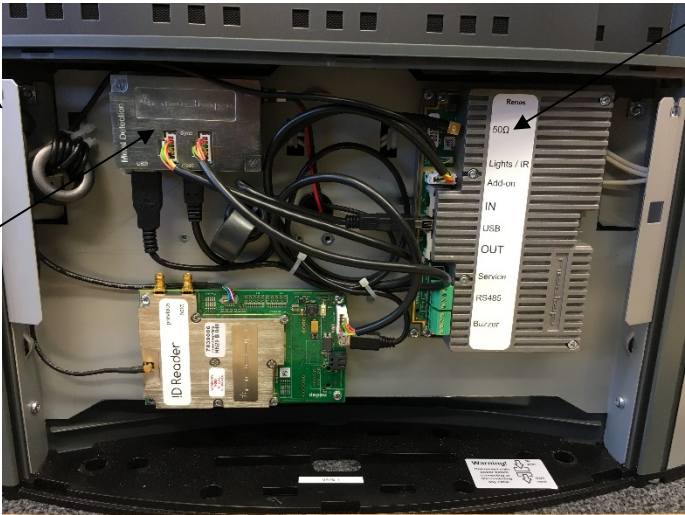


LED/buzzer PCB and customer counter

Antenna

Renos 8.2MHz Transmitter/Receiver and controller PCB

Cover removed



125kHz Metal detector

2.2. Back view



Cover removed

Antenna matching PCB



2.3. LED/buzzer and customer counter top view



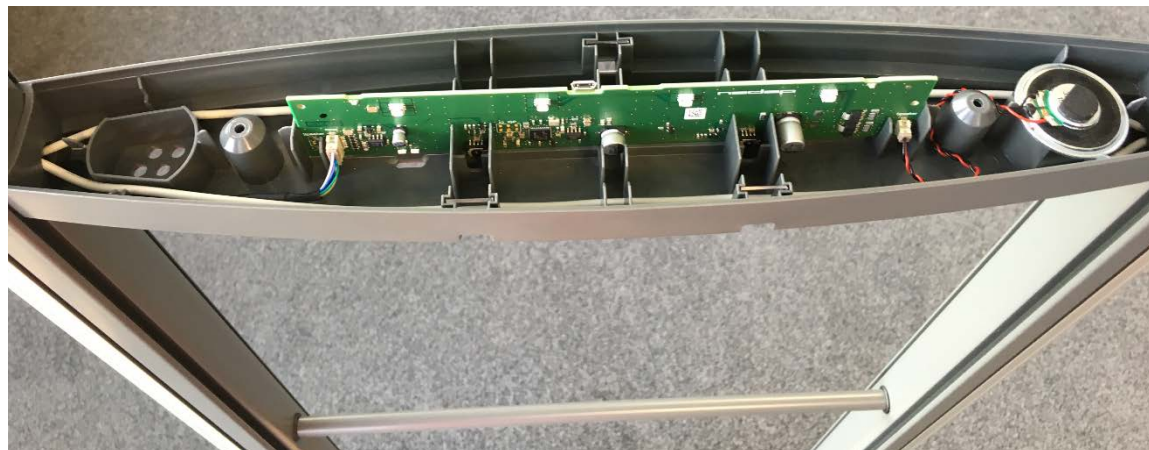
Transparent cover installed

2.4. LED/buzzer and customer counter top cover removed



Transparent white cover removed

2.5. LED/buzzer and customer counter top reflector removed



3. Renos transmitter/receiver and controller PCB

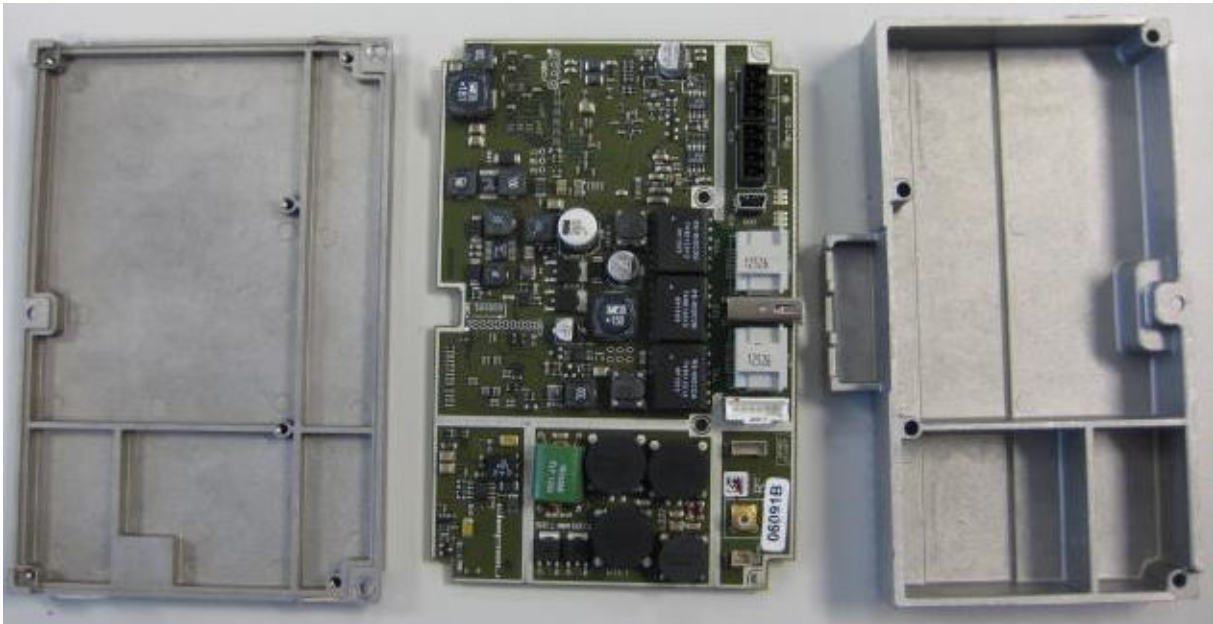
3.1. Complete top view with metal covers



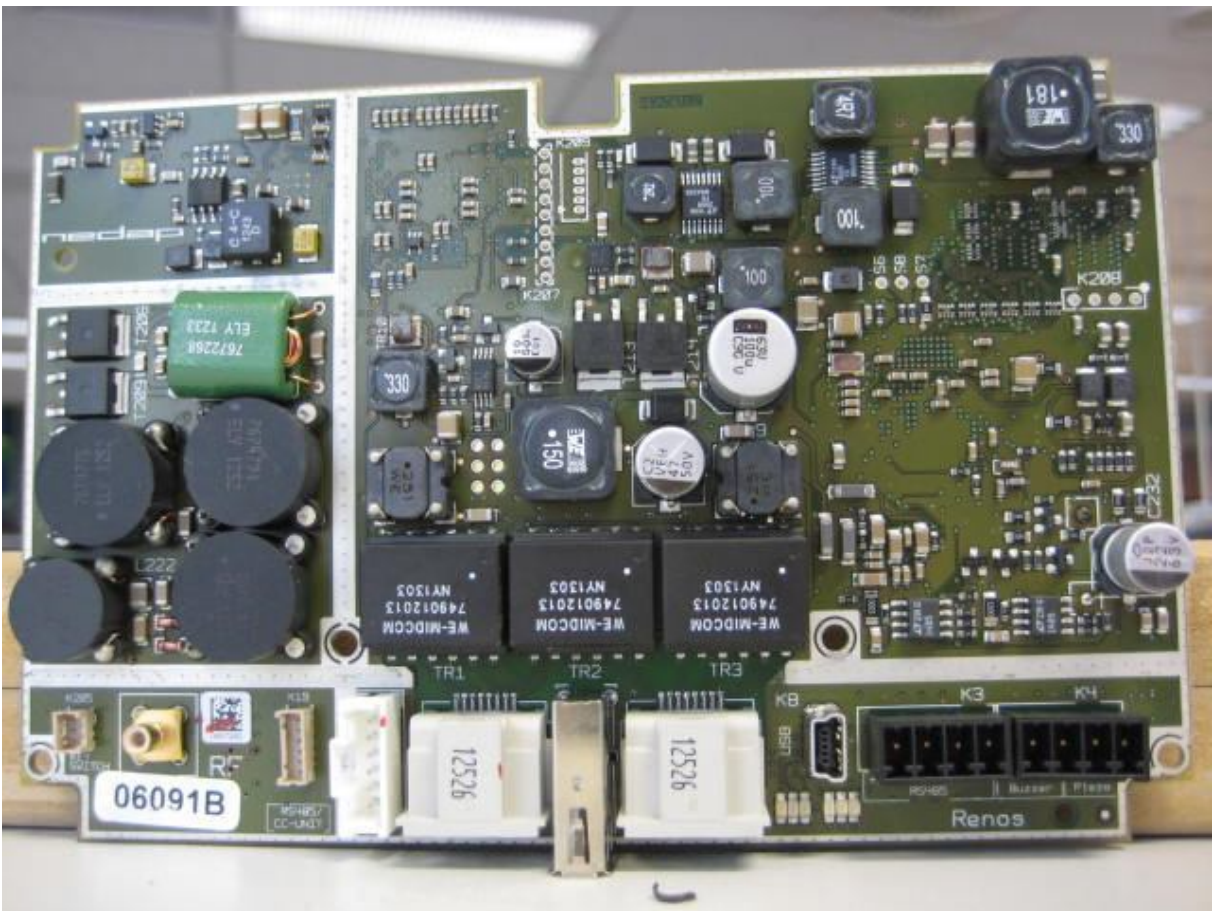
3.2. Back view with metal covers



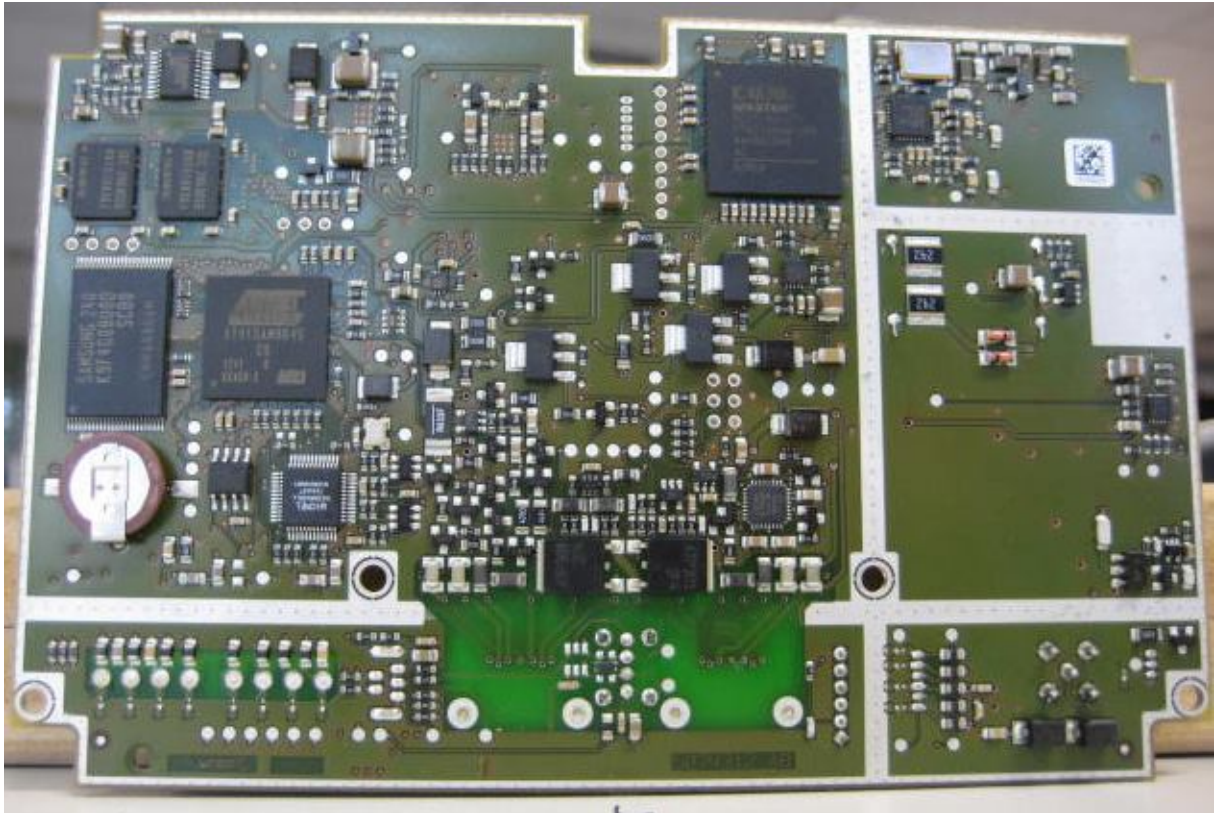
3.3. Renos with covers removed



3.4. Renos front side PCB

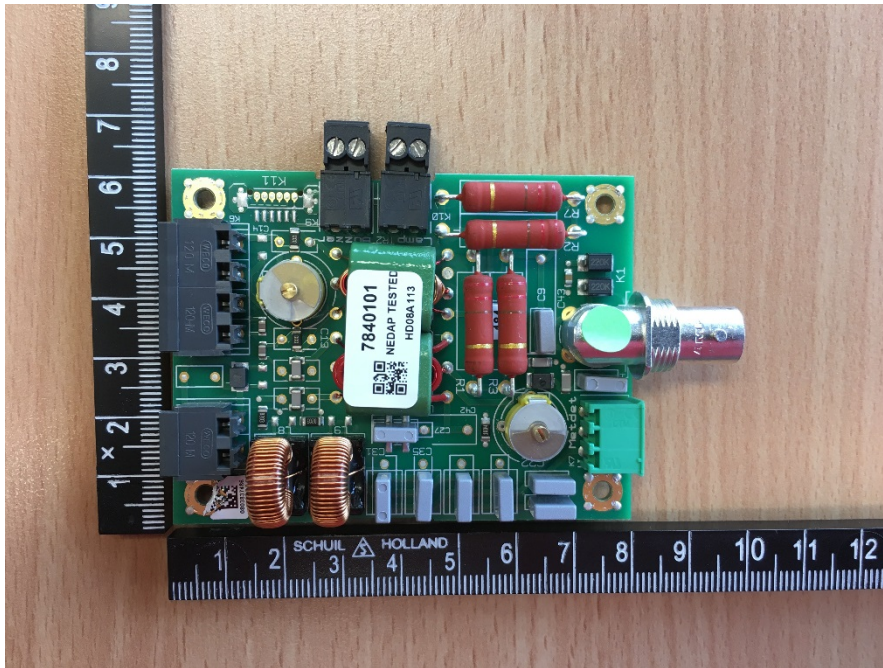


3.5. Renos back side PCB

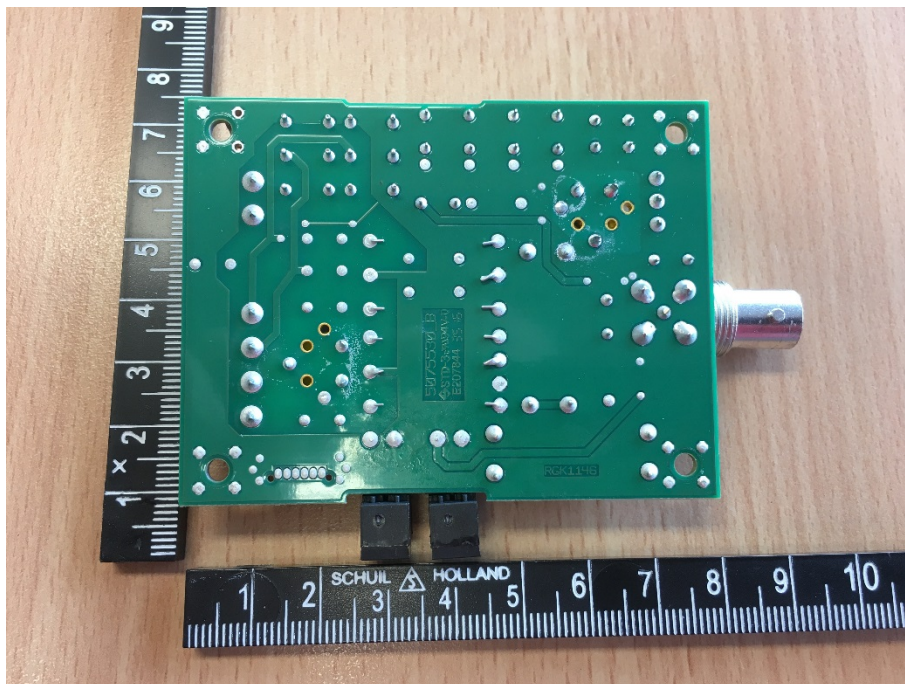


4. Antenna matching PCB

4.1. Front view

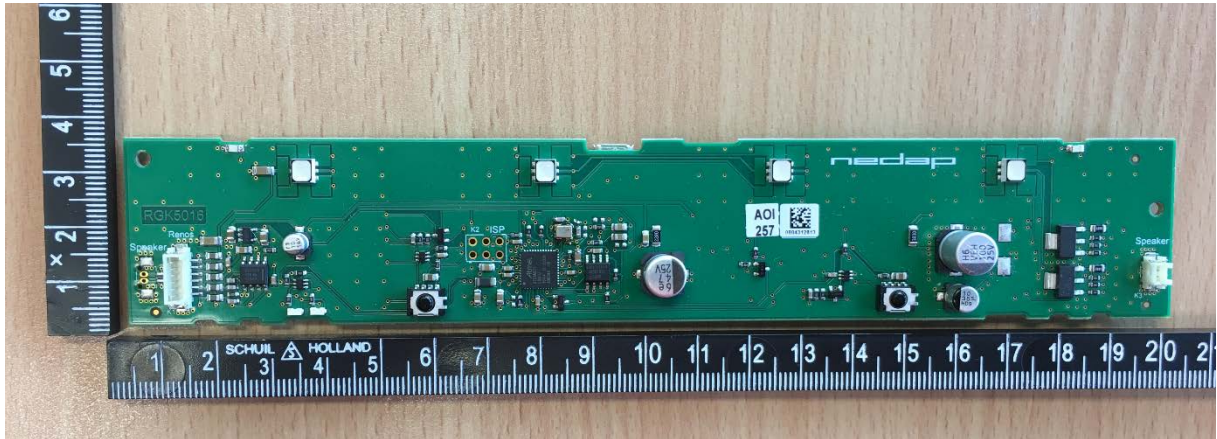


4.2. Back view

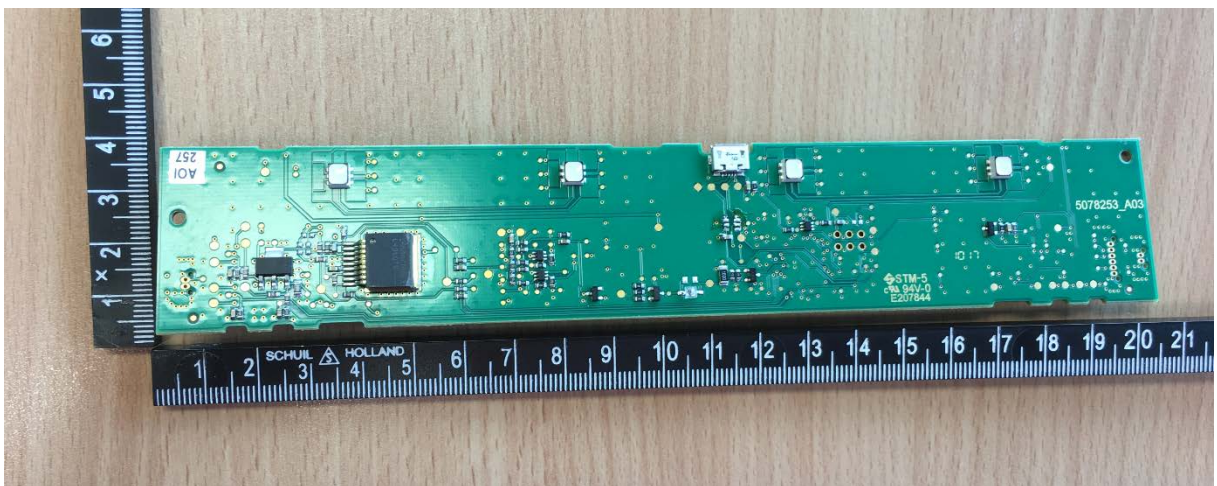


5. LED/buzzer and customer counter PCB

5.1. Front view



5.2. Back view

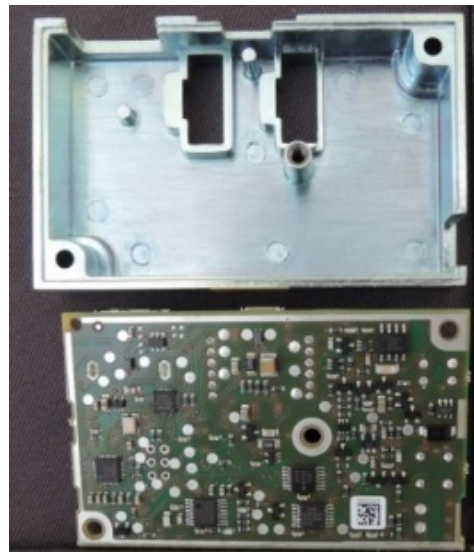
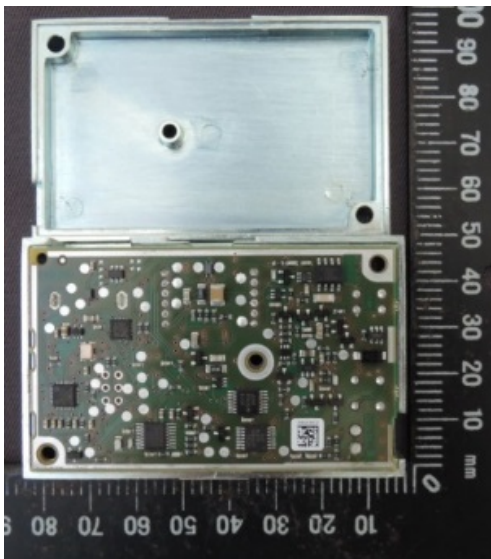


6. Metal detector

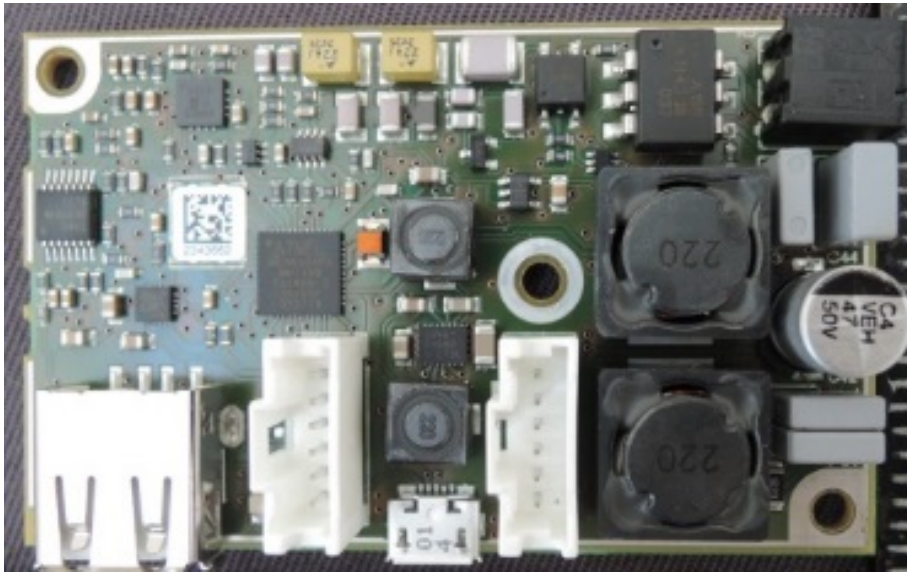
6.1. Total view with metal covers



6.2. Metal detector with covers removed



6.3. Metal detector front view PCB



6.4. Metal detector back view PCB

