

TNO Electronic Products & Services (EPS) B.V.



Return address: P.O. Box 15, 9822 ZG Niekerk, The Netherlands

ATCB
Att. Mrs. M. Bosley
Certification Department
6731 Whittier Avenue, Suite C110
McLean, Virginia 22101
USA

Smidshornerweg 18
P.O. Box 15
9822 ZG Niekerk
The Netherlands

www.tno-eps.com

T +31 594 505005
F +31 594 504804
E info@tno-eps.com

Subject
Antenna information

Date
October 09, 2007

Our reference
07072301.B04

Your reference
--

Page
1 of 1

Our General Terms and Conditions, as filed at the Chamber of Commerce in Groningen, are applicable to all orders given to TNO Electronic Products & Services (EPS) B.V.

TNO Electronic Products & Services (EPS) B.V. is registered at the Chamber of Commerce in Groningen with no. 27247331.

Dear Mrs. Bosley:

On behalf of our customer N.V. Nederlandsche Apparatenfabriek "NEDAP", we hereby declare that the antenna of the following device:

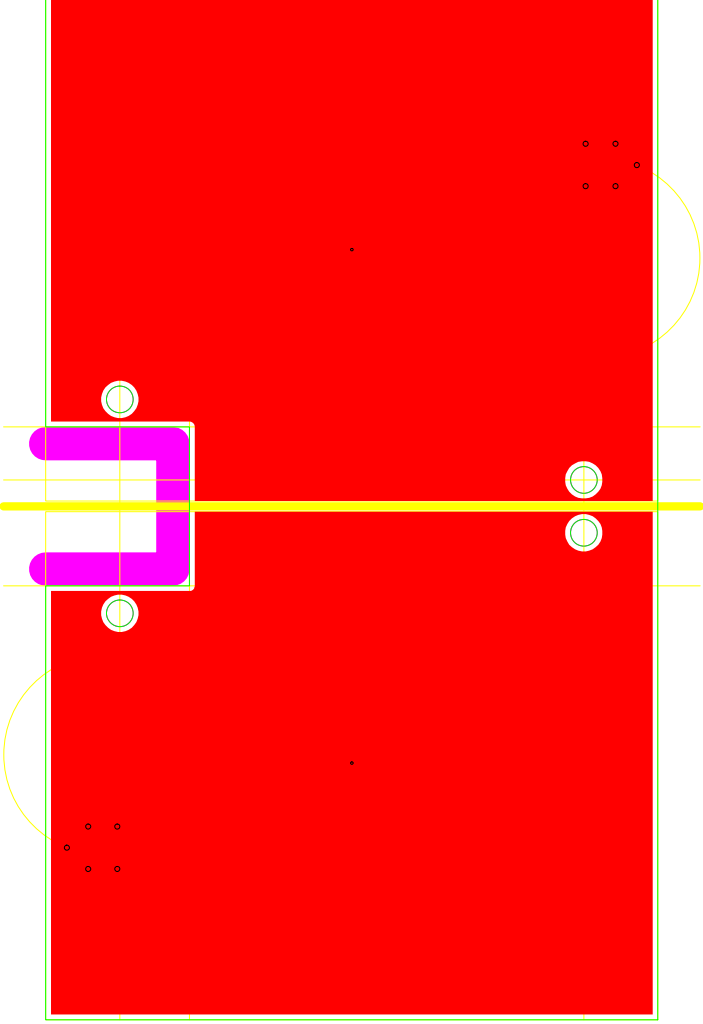
FCC ID : CGD-TRANSITENTRY
Brand : NEDAP
Model : TRANSIT Entry
Description : 120-125kHz/13.56MHz/2.45 GHz Proximity Card and Tag reader

is fully integrated on the PCB and is part of the device.
See for details the photographs of the interior of the device.

Best regards,
TNO Electronic Products & Services (EPS) B.V.

A handwritten signature in blue ink, appearing to read 'P. de Beer', is written over a light blue horizontal line.

P. de Beer
Approvals & Quality Manager.



CopperBottom I50 viewed from top	
Design	Partnumber
T1095383_A02	5064996



A02	23082007	Panelized	ES	
A01	21022007	Initial design	BvZ	
Ref. nr.:	Index	Date	Change description	
				Drw.

 GROENLO HOLLAND	Format: A4		Dsgn: BvZ	Date: 21022007
	Format: A4		Drwt: BvZ	Date: 21022007
	Format: A4		Chck: BvZ	Date: 21022007

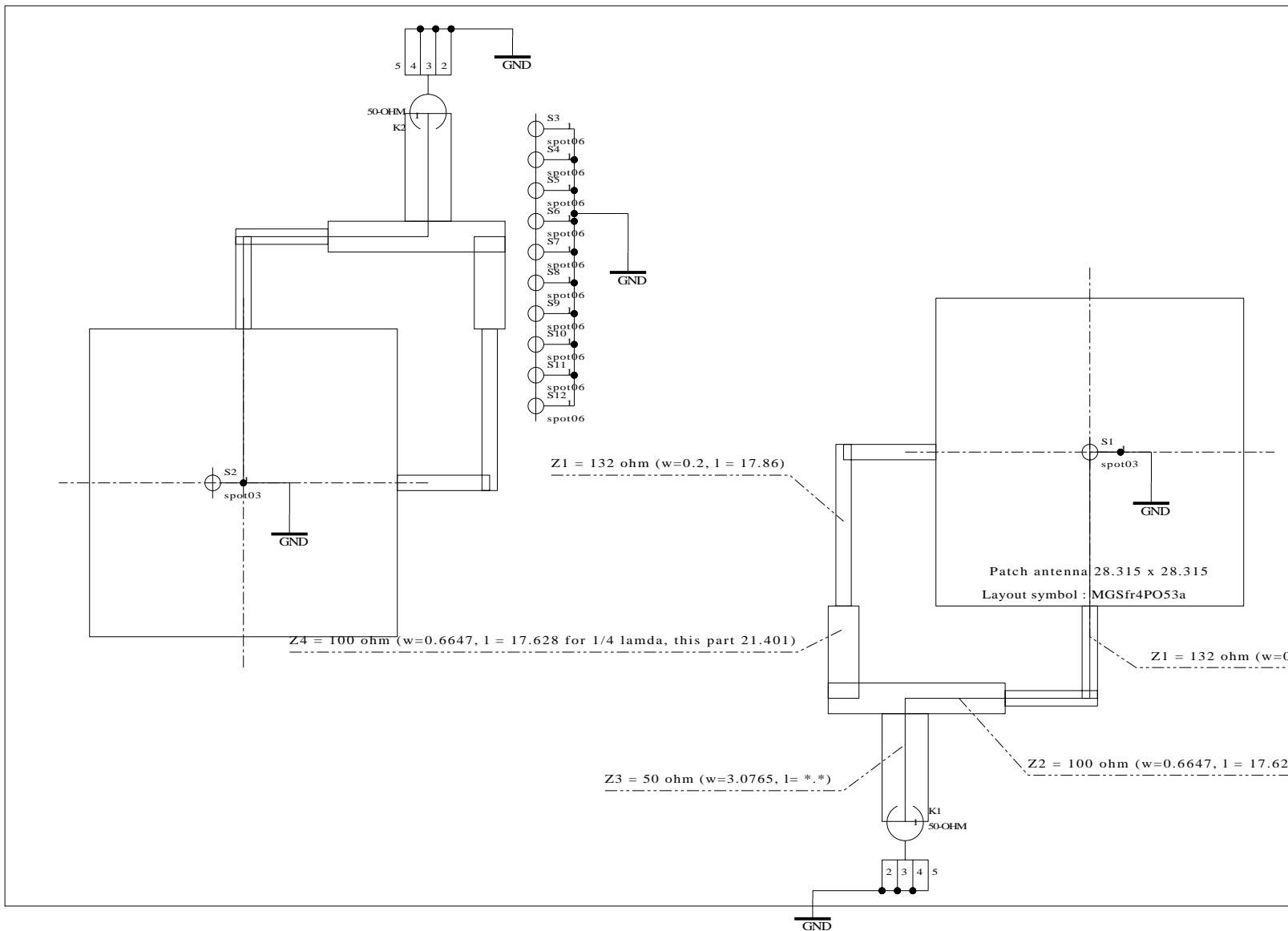
PRNT SAM SPATCH TRANSIT ENTRY

Copyright (c) by N.V. Nederlandse Apparatenfabriek NEDAP
 No part of this drawing may be reproduced or distributed in any form or by any means,
 stored in a database or retrieval system, without the prior written permission of NEDAP.

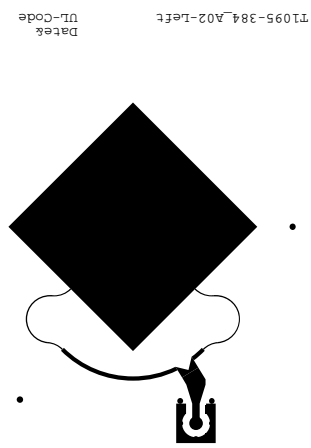
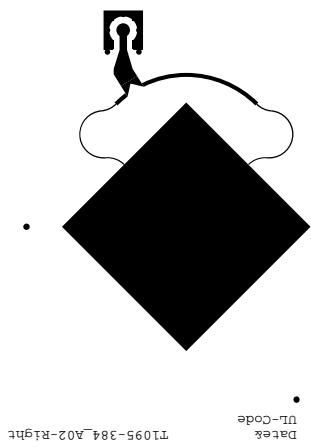


SPATCH TRANSIT ENTRY

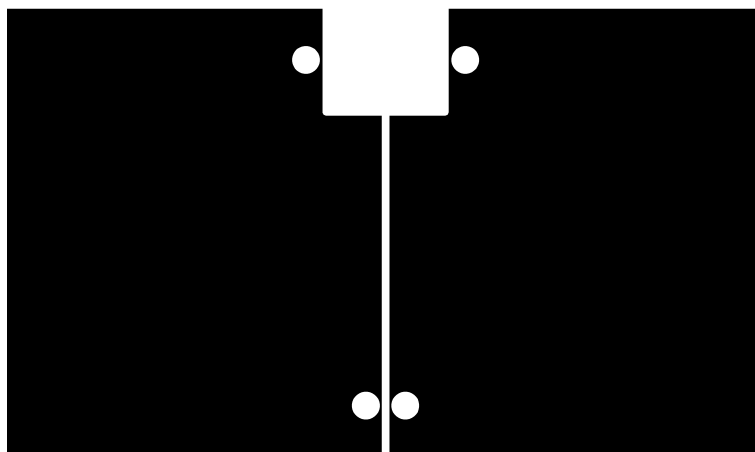
- TRANSIT Entry uses a separated receive and transmit antenna each consisting out of one left hand circular patch antenna.
- The material used for the patch antenna's is a FR4 material 1.6 mm thick.
- The gain including the distribution network is approximately 3.0 +/- 0.5 dB.
- MMBX connectors are used to connect to the TRANSIT Entry.



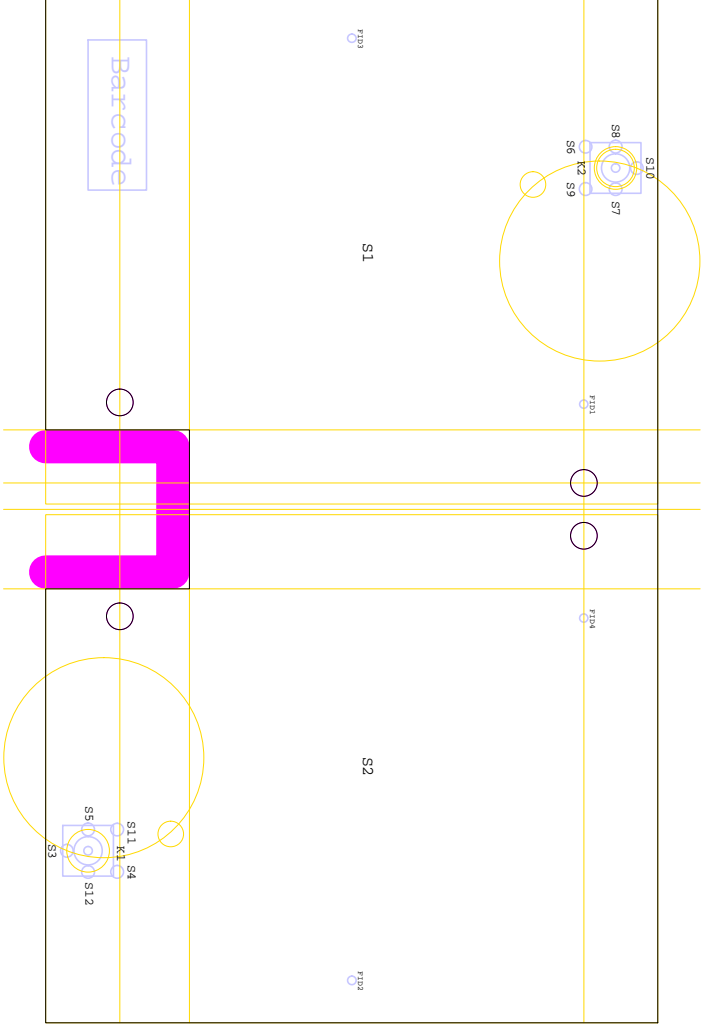
	A01	19022007	Initial design	BvZ
ECO.:	Release	Date	Change description	Drw
			Dsgn.: BvZ	date: 19022007
			Drw.: BvZ	date: 19022007
PRNT SAM SPATCH TRANSIT ENTRY			Rvw.: BvZ	date: 19022007
			Drawing : T1095383 Number. :	
Copyright (c) by N.V. Nederlandsche Apparatenfabriek NEDAP. No part of this drawing may be reproduced or distributed in any form or by any means, or stored in a data base or retrieval system without the prior written permission of NEDAP.			Sheet: 12.01	of: 1
			Partnumber: 7815190	



Copper Top L1 viewed from top	
Design	Partnumber
T1095383_A02	5064996



Copper Bottom L50 viewed from top	
Design	Partnumber
T1095383_A02	5064996



flex-outline
viewed from top

A02	23082007	Panelized	ES
A01	21022007	Initial design	BvZ
Ref. nr.:	Index	Date	Draw.

nedap
GROENLO HOLLAND

Dsgn: BvZ	Date: 21022007
Drwt: BvZ	Date: 21022007
Chck: BvZ	Date: 21022007

Format: A4

PRNT SAM SPATCH TRANSIT ENTRY

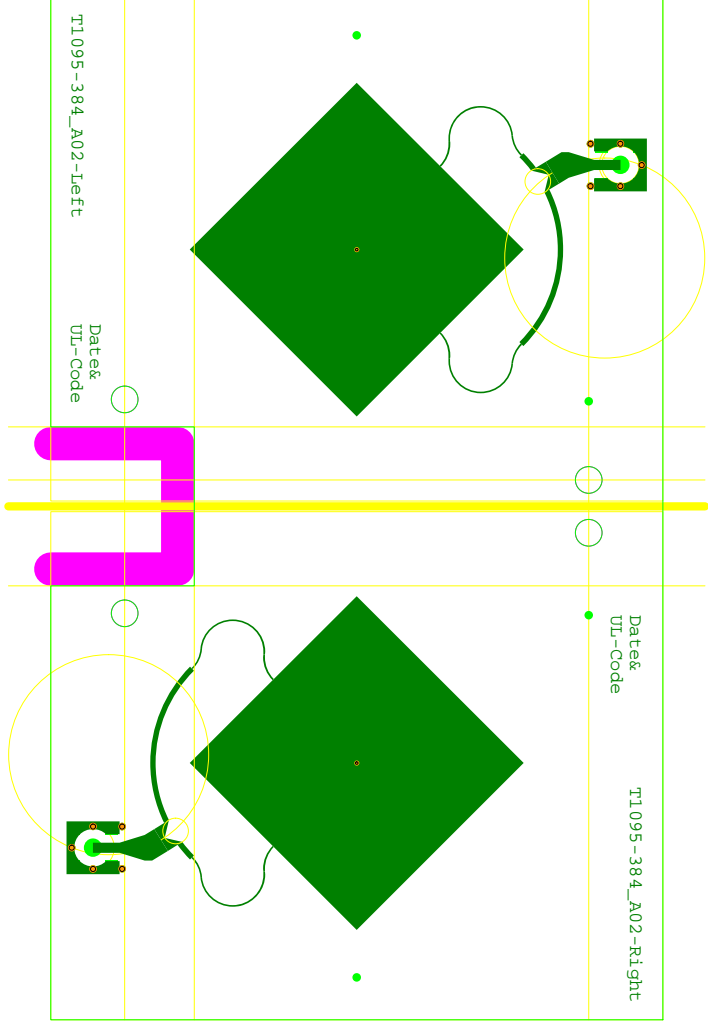
T1095-383

Copyright (c) by N.V. Nederlandse Apparatenfabriek NEDAP

No part of this drawing may be reproduced or distributed in any form or by any means, stored in a database or retrieval system, without the prior written permission of NEDAP.

Page: 10.01 of: 1

Partnumber: 7815190



Copper top panel
viewed from top

Design	Partnumber
T1095383_A02	5064996

	A02	23082007	Panelized	ES
	A01	21022007	Initial design	BvZ
Ref. nr.:	Index	Date	Change description	Draw.

nedap		Dsgn: BvZ		Date: 21022007
GROENLO HOLLAND		Drwt: BvZ		Date: 21022007
		Chck: BvZ		Date: 21022007

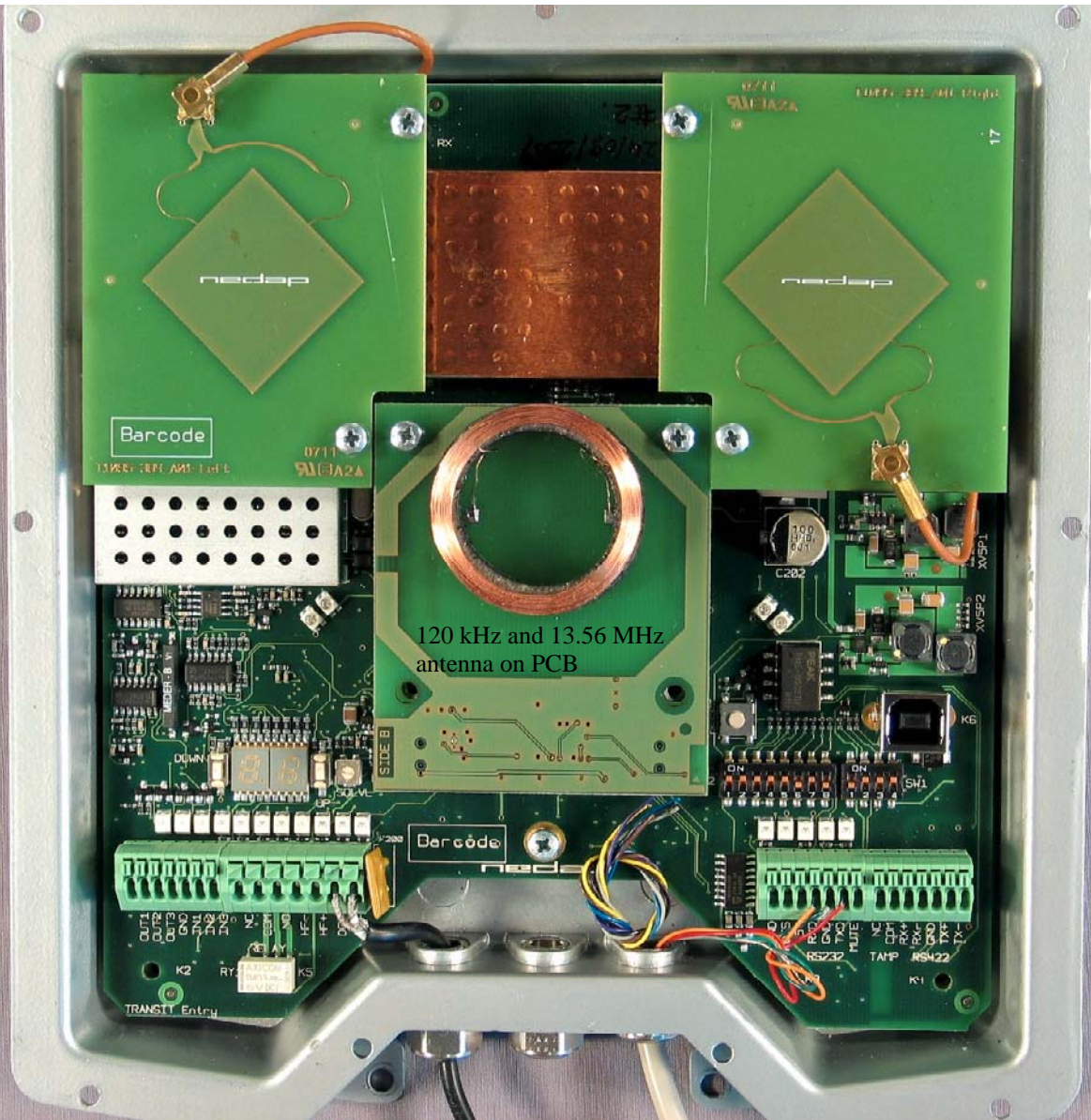
PRINT SAM SPATCH TRANSIT ENTRY

T1095-383

Page: 10.02 of: 1

Partnumber: 7815190

Copyright (c) by N.V. Nederlandse Apparatfabriek NEDAP
No part of this drawing may be reproduced or distributed in any form or by any means, stored in a database or retrieval system, without the prior written permission of NEDAP.



120 kHz and 13.56 MHz antenna on PCB