



**PHOTOGRAPHS OF THE INTERIOR OF A  
DIGITAL TRANSMISSION SYSTEM  
OPERATING IN THE 2401-2483MHZ BAND,  
BRAND NEDAP, MODEL LAMPDRIVER 250-400W.**

FCC listed : 90828  
Industry Canada : 2932G-1  
VCCI Registered : R-1518, C-1598  
R&TTE, LVD, EMC Notified Body : 1856

**TÜV Rheinland EPS B.V.**  
P.O. Box 15  
9822 ZG Niekerk (NL)  
Smidshornerweg 18  
9822 TL Niekerk (NL)

Telephone: +31 594 505005  
Telefax: +31 594 504804

Internet: [www.tuv-eps.com](http://www.tuv-eps.com)  
E-mail: [info@tuv-eps.com](mailto:info@tuv-eps.com)

Description of EUT: 47 CFR Part 15 (july 10-2008)  
Manufacturer: N.V. Nederlandse Apparatenfabriek "Nedap"  
Brand mark: Nedap  
Model: Lampdriver 250-400W



### Description of test item

Test item : Digital Transmission System  
Manufacturer : N.V. Nederlandsche Apparatenfabriek "Nedap"  
Brand : Nedap  
Model(s) : Lampdriver 250-400W  
Serial number(s) : Not provided  
Revision : n.a.  
Receipt date : April 20, 2009

### Applicant information

Applicant's representative : Mr. R. Hogenkamp  
Company : N.V. Nederlandsche Apparatenfabriek "Nedap"  
Address : Parallelweg 2  
Postal code : 7141 DC  
City : Groenlo  
Country : The Netherlands  
Telephone number : +31 544 471 162  
Telefax number : +31 544 463 475

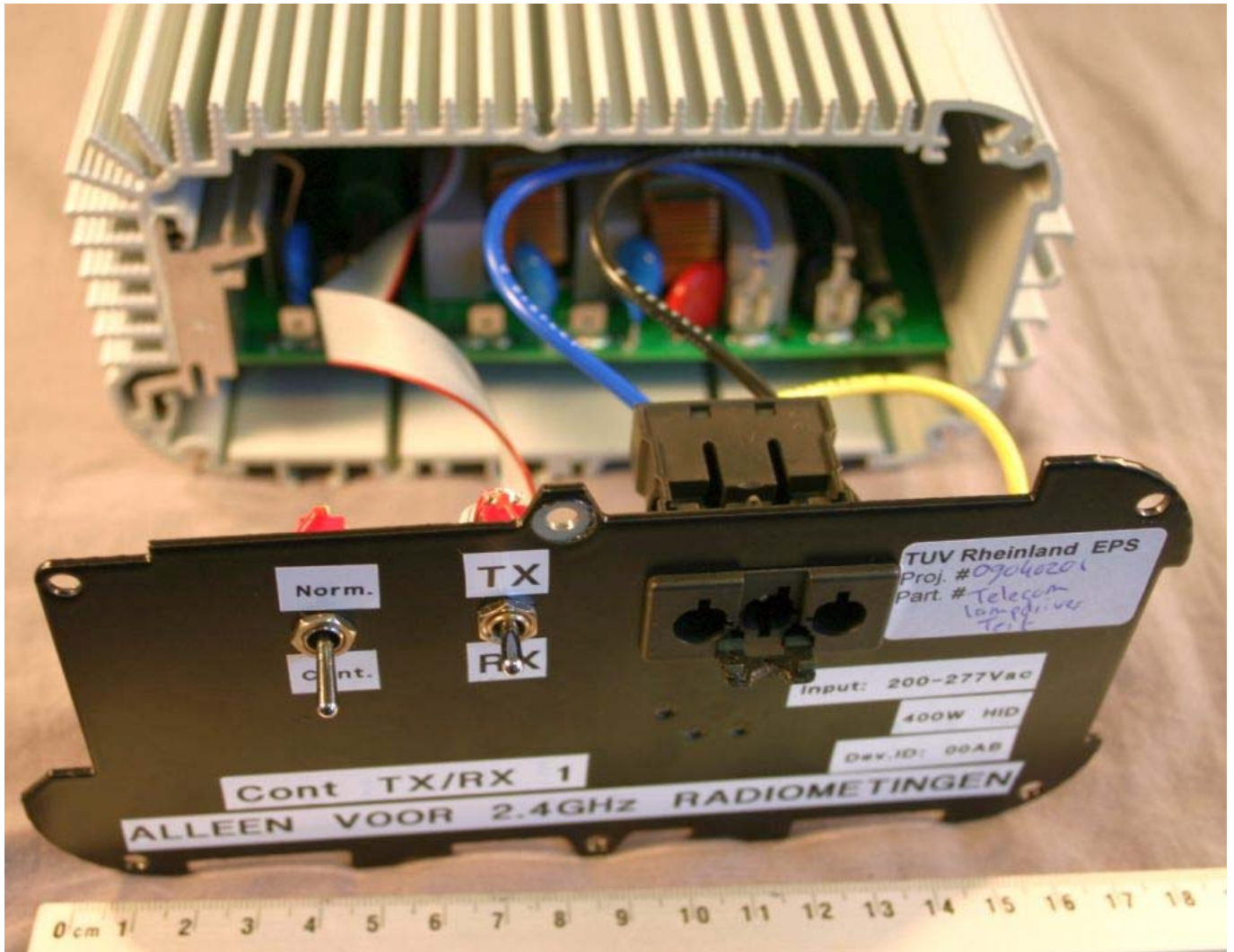
## Table of contents

1.1	PHOTOGRAPHS OF THE EXTERIOR / INTERIOR, DISASSEMBLY PROCESS .....	4
1.1.1	Front panel disassembled, view 1 .....	4
1.1.2	Front panel disassembled, view 2 .....	5
1.1.3	Rear panel disassembled, view 1 .....	6
1.1.4	Rear panel disassembled, view 2 .....	7
1.2	PHOTOGRAPHS OF THE INTERIOR, HOUSING REMOVED .....	8
1.2.1	Main board top view with all connections in place .....	8
1.2.2	Main board top view, all connections and heatdissipatingbody removed (view 1) .....	9
1.2.3	Main board top view, all connections and coolingbody removed (view 2) .....	10
1.2.4	Main board bottom view .....	11
1.3	2.4 GHz TRANSMITTER BOARD .....	12
1.3.1	2.4 GHz Transmitter board, top view .....	12
1.3.2	2.4 GHz Transmitter board, bottom view .....	13
1.3.3	2.4 GHz Transmitter board, top view – shield removed .....	14

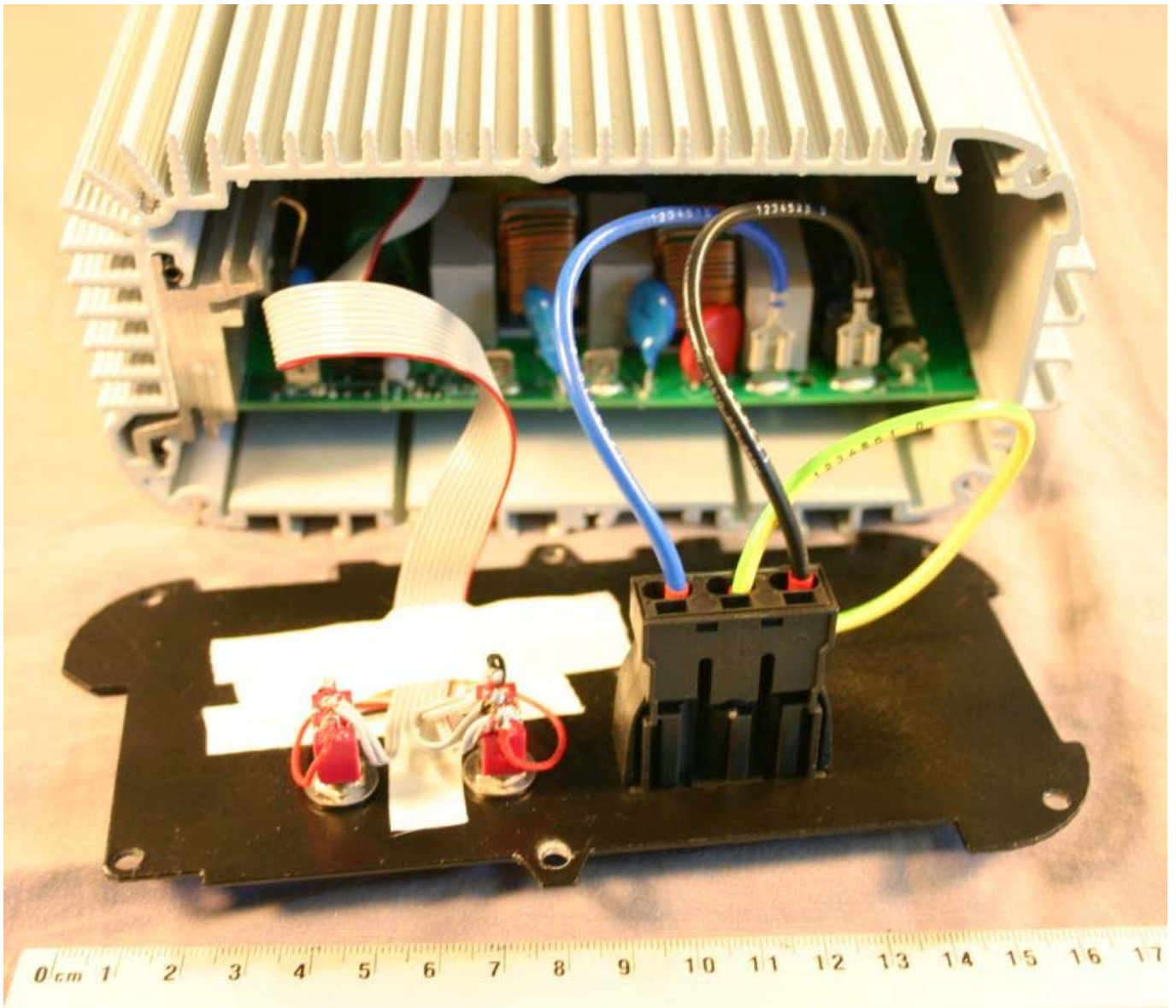
Description of EUT: 47 CFR Part 15 (july 10-2008)  
Manufacturer: N.V. Nederlandse Apparatenfabriek "Nedap"  
Brand mark: Nedap  
Model: Lampdriver 250-400W

## 1.1 Photographs of the exterior / interior, disassembly process.

### 1.1.1 Front panel disassembled, view 1

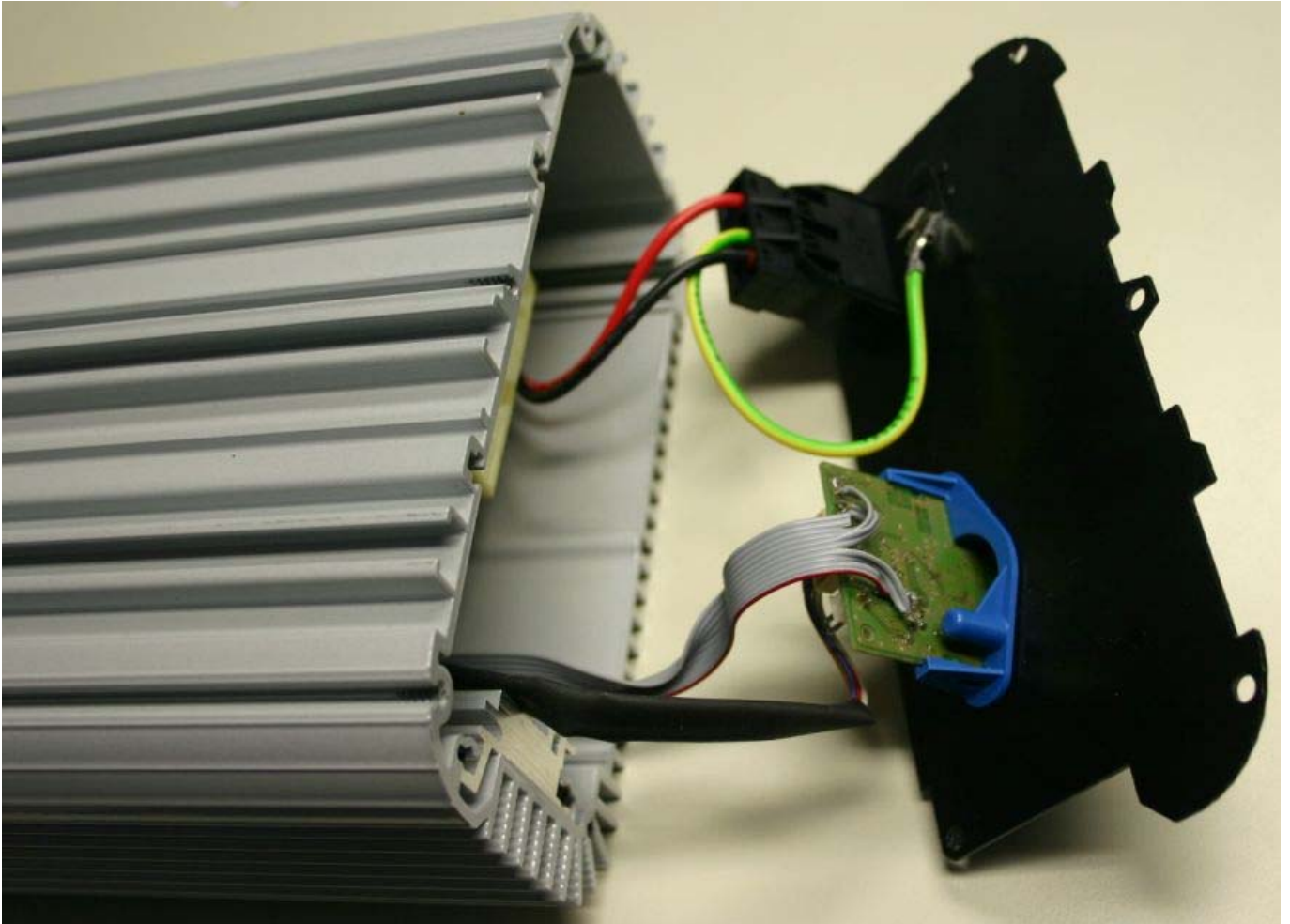


1.1.2 Front panel disassembled, view 2

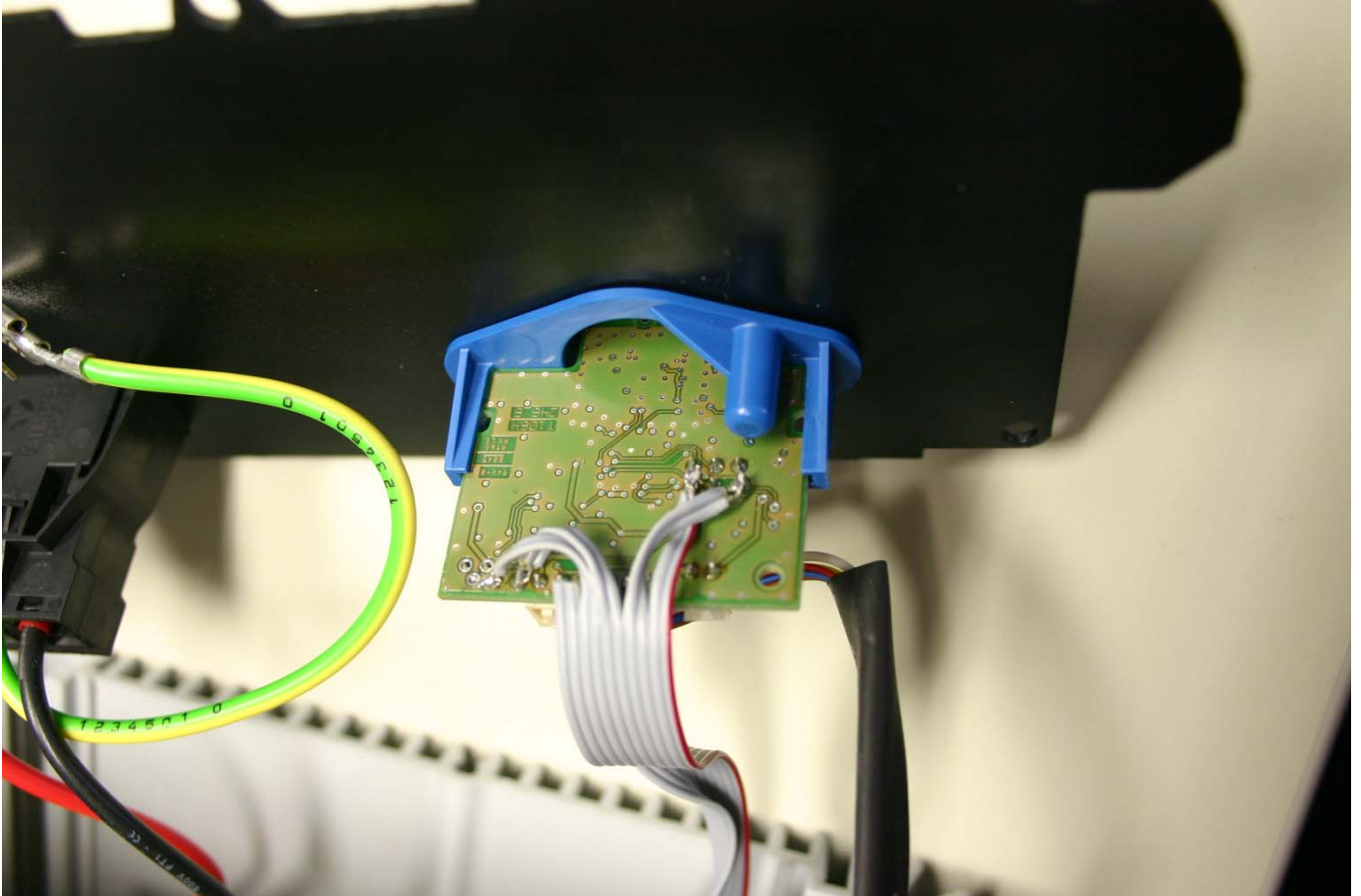


Description of EUT: 47 CFR Part 15 (july 10-2008)  
Manufacturer: N.V. Nederlandse Apparatenfabriek "Nedap"  
Brand mark: Nedap  
Model: Lampdriver 250-400W

### 1.1.3 Rear panel disassembled, view 1

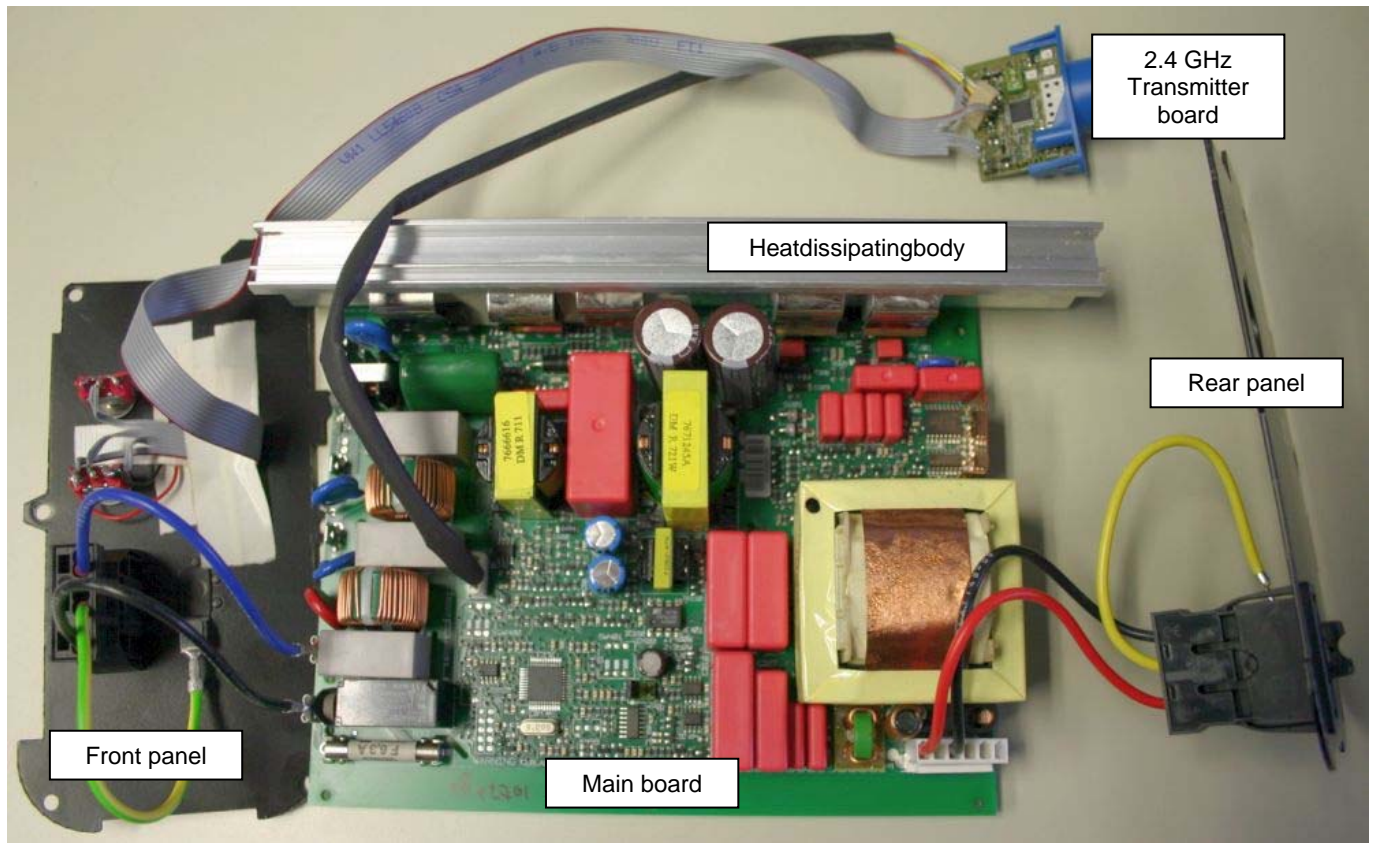


#### 1.1.4 Rear panel disassembled, view 2



## 1.2 Photographs of the interior, housing removed

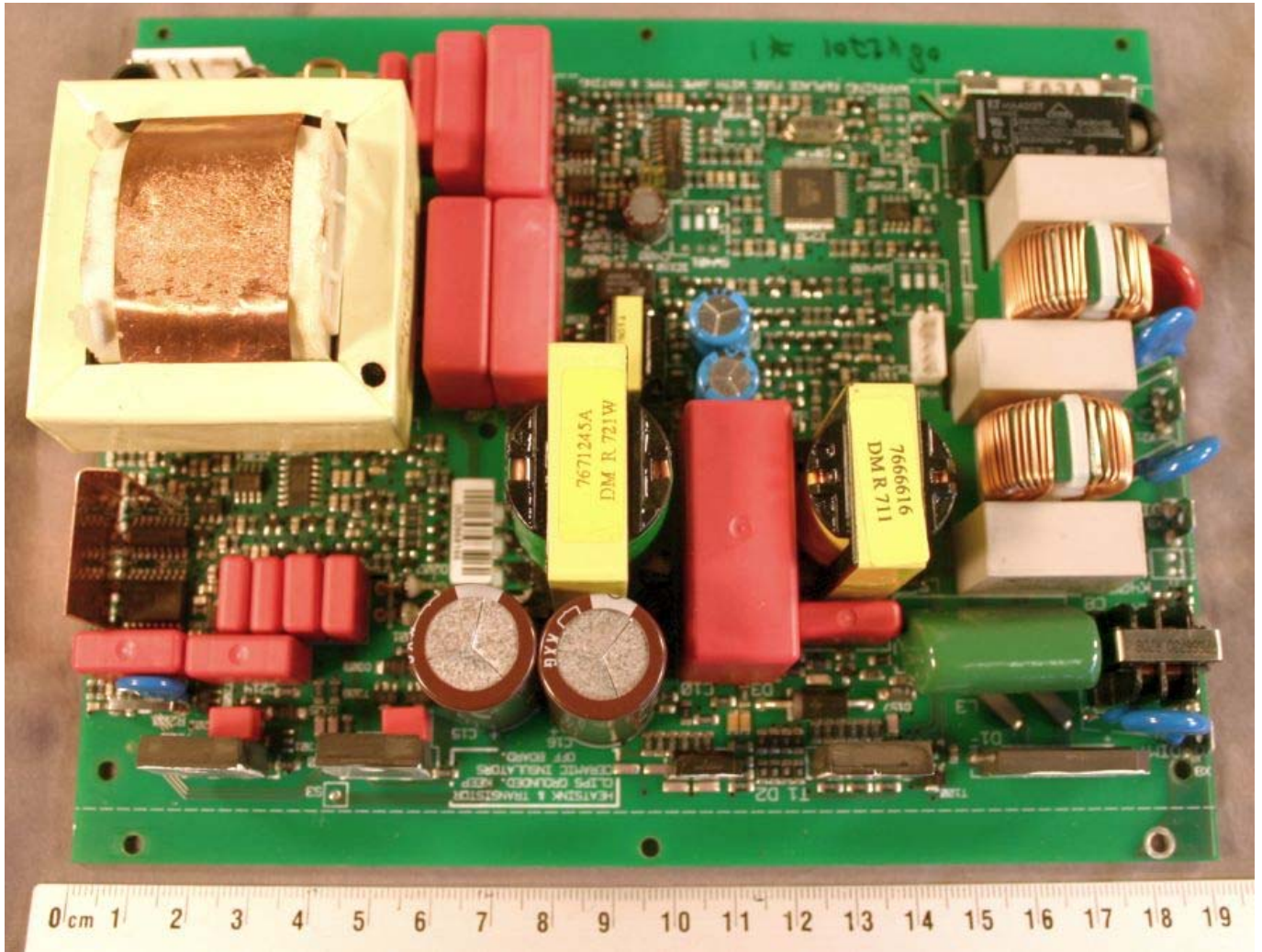
### 1.2.1 Main board top view with all connections in place





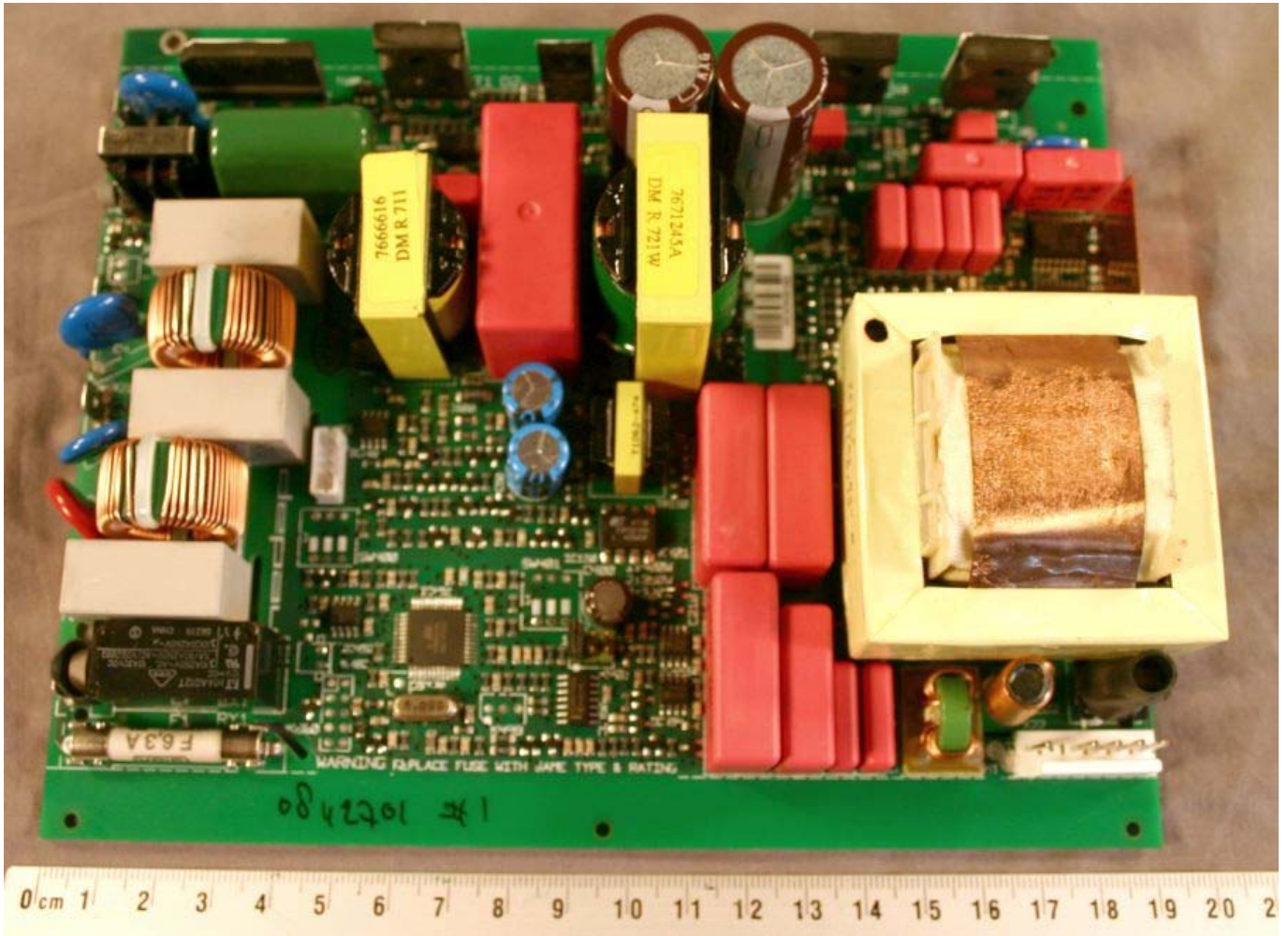
Description of EUT: 47 CFR Part 15 (july 10-2008)  
Manufacturer: N.V. Nederlandse Apparatenfabriek "Nedap"  
Brand mark: Nedap  
Model: Lampdriver 250-400W

1.2.2 Main board top view, all connections and heatdissipatingbody removed (view 1)



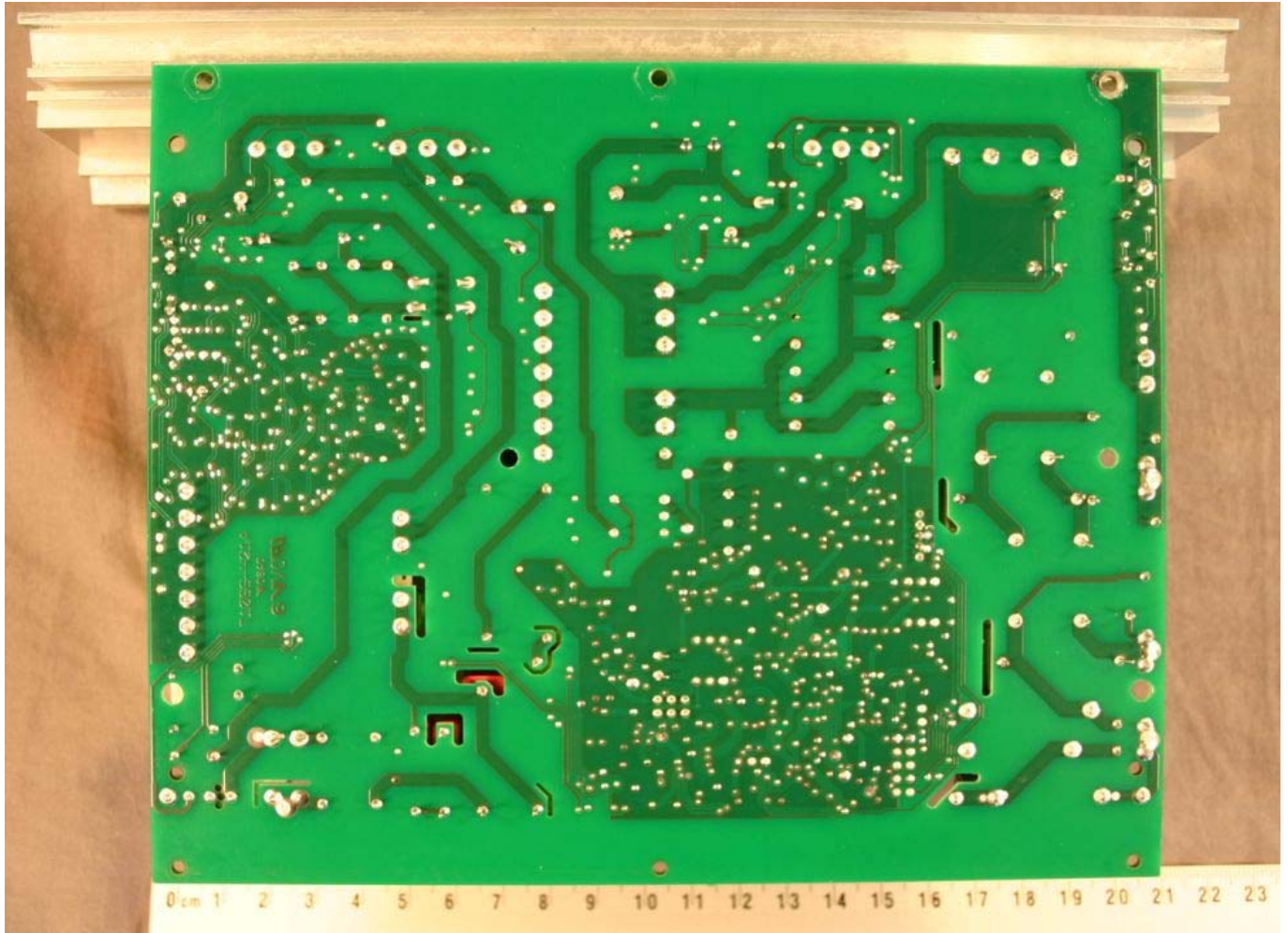
Description of EUT: 47 CFR Part 15 (july 10-2008)  
Manufacturer: N.V. Nederlandse Apparatenfabriek "Nedap"  
Brand mark: Nedap  
Model: Lampdriver 250-400W

1.2.3 Main board top view, all connections and coolingbody removed (view 2)



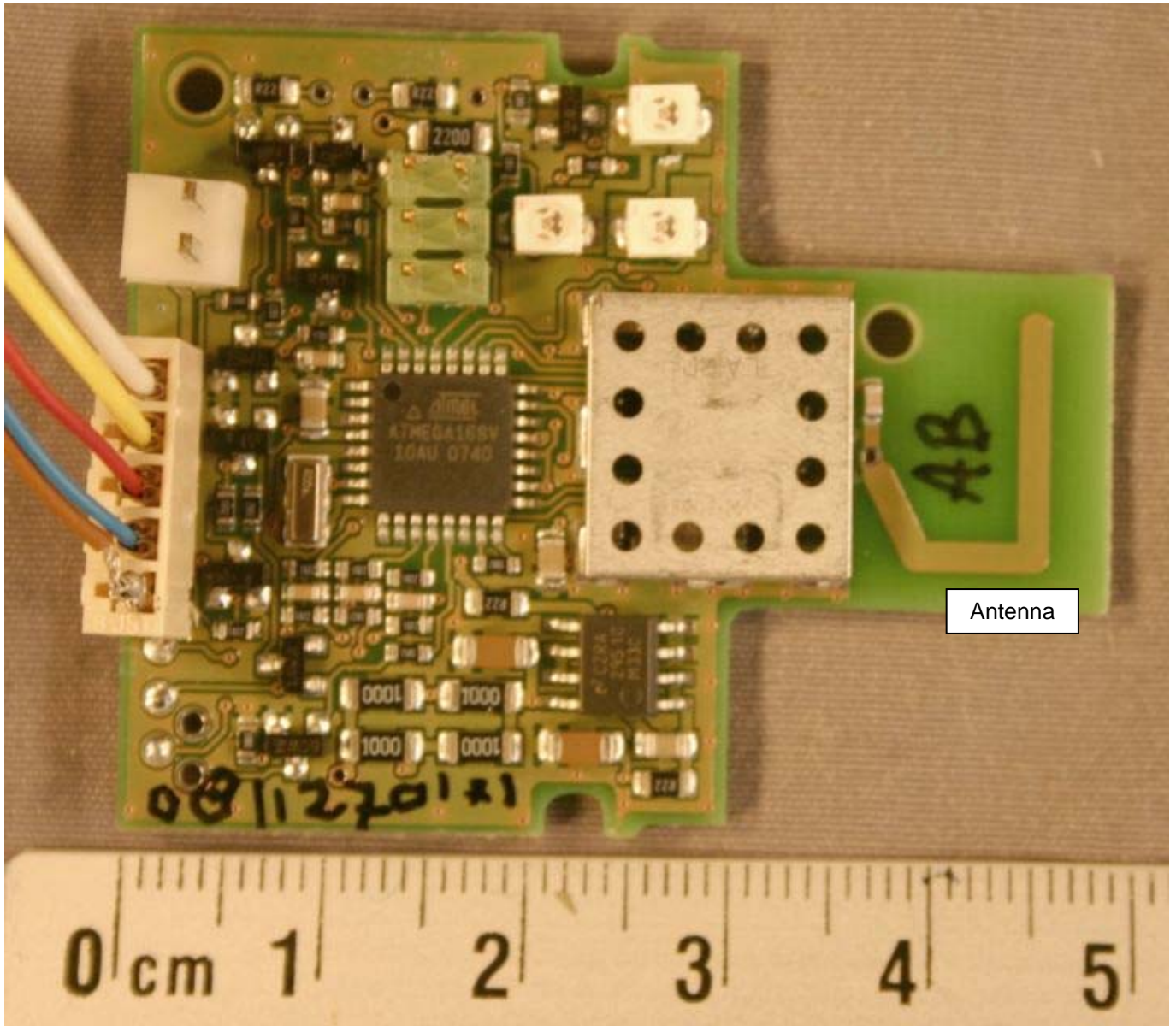
Description of EUT: 47 CFR Part 15 (july 10-2008)  
Manufacturer: N.V. Nederlandse Apparatenfabriek "Nedap"  
Brand mark: Nedap  
Model: Lampdriver 250-400W

1.2.4 Main board bottom view



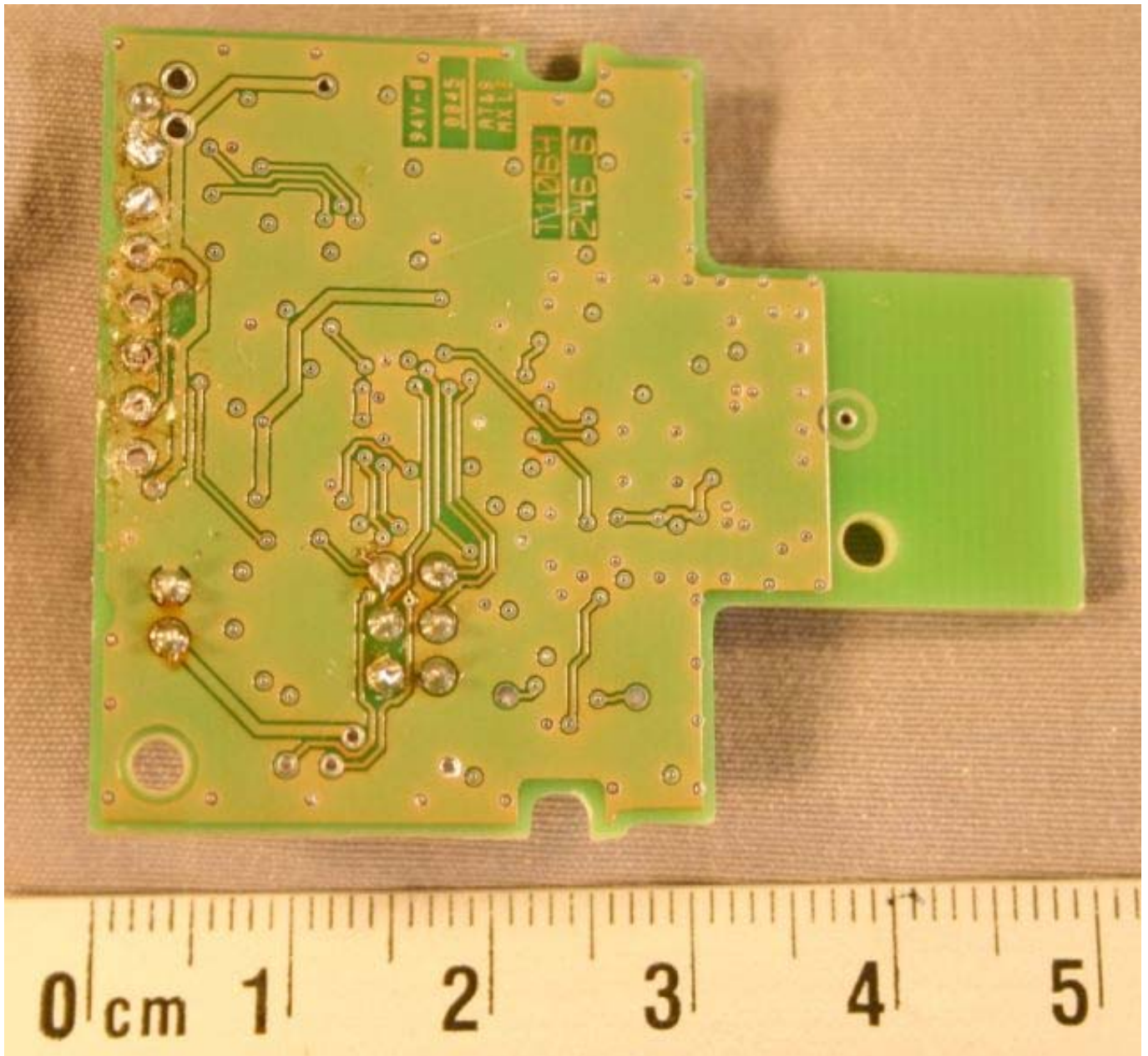
### 1.3 2.4 GHz Transmitter board

#### 1.3.1 2.4 GHz Transmitter board, top view



Description of EUT: 47 CFR Part 15 (july 10-2008)  
Manufacturer: N.V. Nederlandse Apparatenfabriek "Nedap"  
Brand mark: Nedap  
Model: Lampdriver 250-400W

1.3.2 2.4 GHz Transmitter board, bottom view



Description of EUT: 47 CFR Part 15 (july 10-2008)  
Manufacturer: N.V. Nederlandse Apparatenfabriek "Nedap"  
Brand mark: Nedap  
Model: Lampdriver 250-400W

1.3.3 2.4 GHz Transmitter board, top view – shield removed

