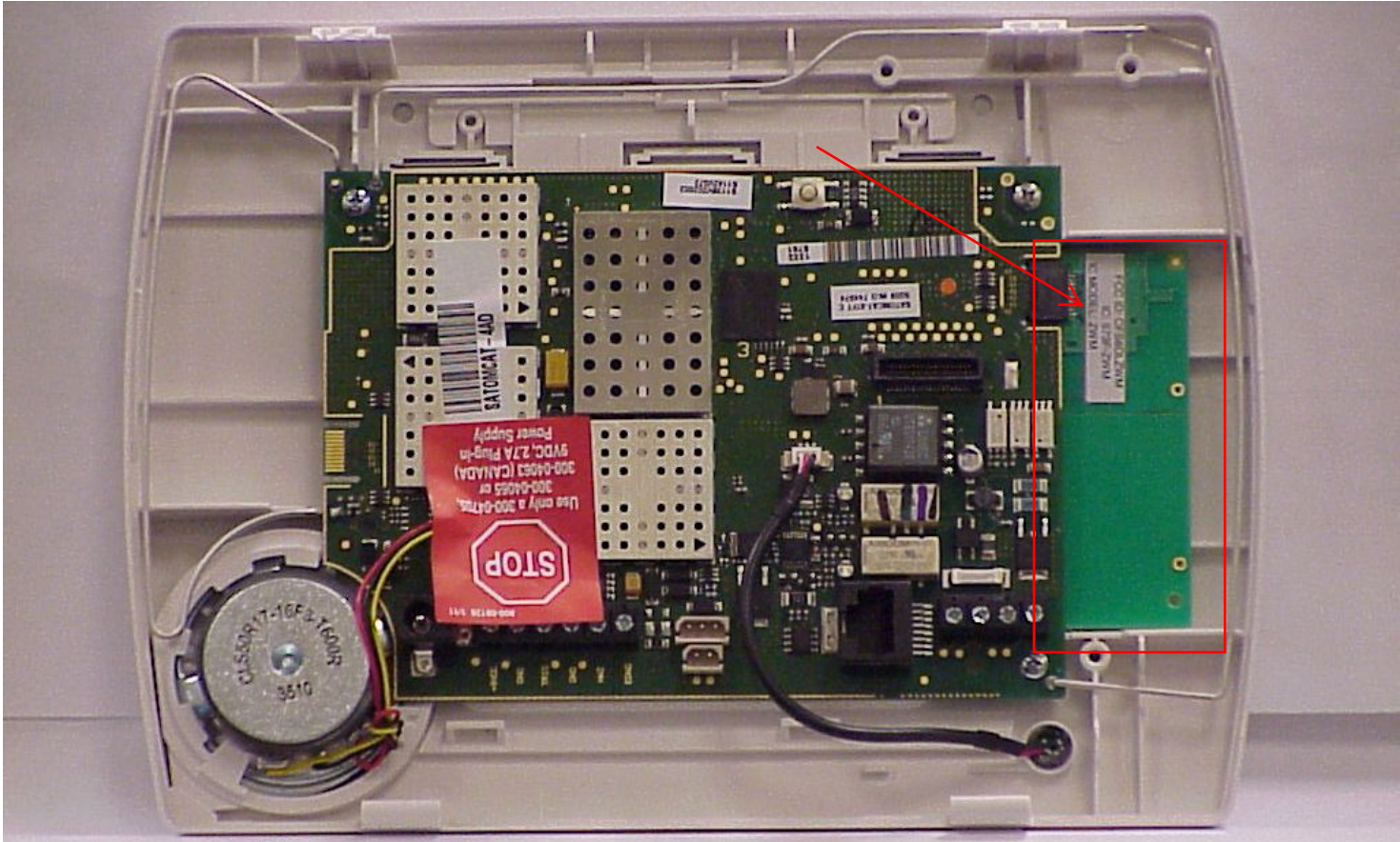


TOP OF MODULE SHOWING MODULE LABEL:



MODULE LOCATION ON MOTHER BOARD:



EXACT LOCATION OF THE MAIN AND AUXILIARY LABELS:

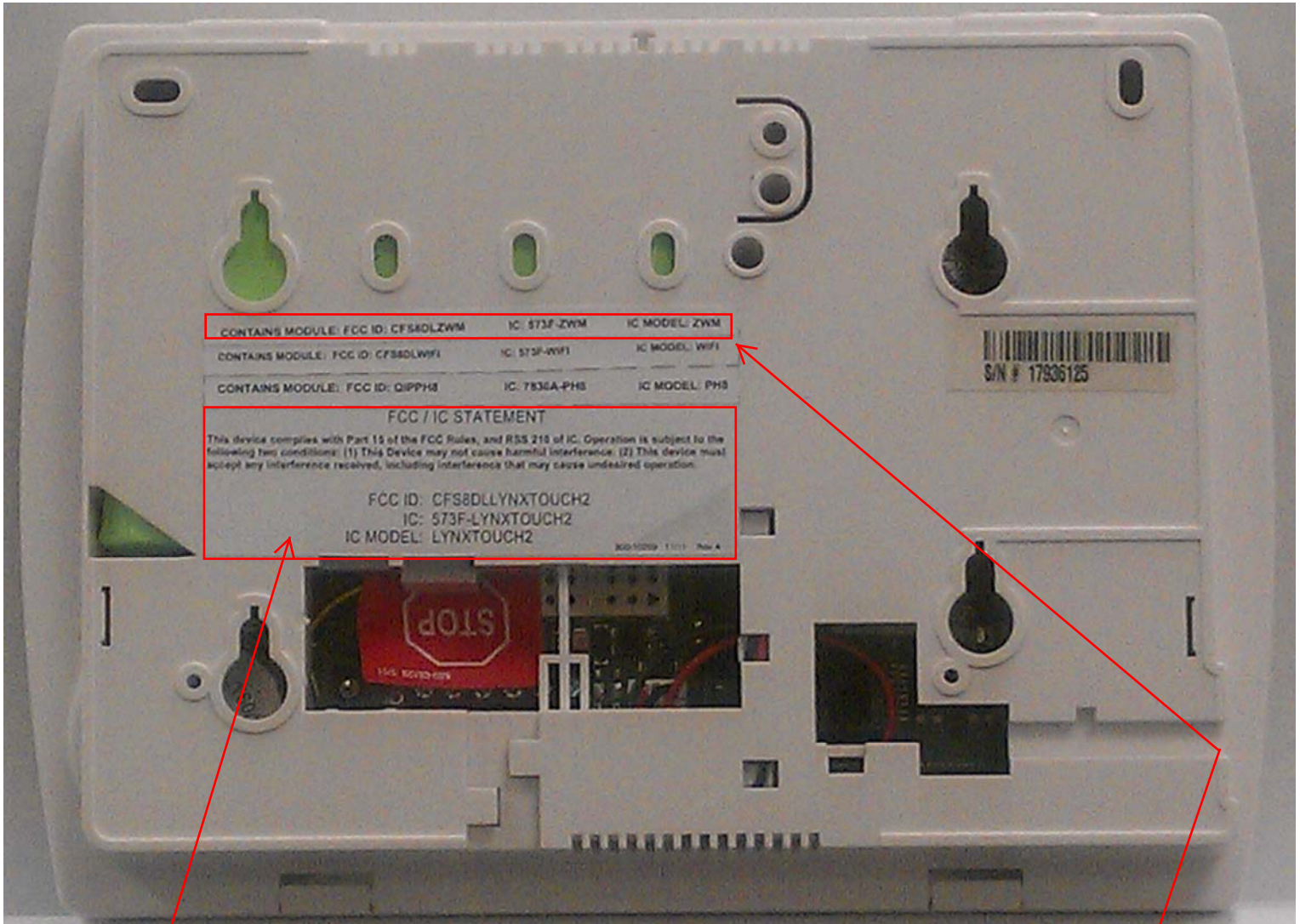


Diagram of the FCC/IC Statement label. The label is rectangular with a red border. Above the label, a dimension line indicates a width of 3.50". To the left of the label, a dimension line indicates a height of 1.00". The label contains the following text:

FCC / IC STATEMENT

This device complies with Part 15 of the FCC Rules, and RSS 210 of IC. Operation is subject to the following two conditions: (1) This device may not cause harmful interference. (2) This device must accept any interference received, including interference that may cause undesired operation.

FCC ID: CFS8DLYNXTXTOUCH2
 IC: 573F-LYNXTXTOUCH2
 IC MODEL: LYNXTXTOUCH2

800-10259 11/11 Rev A

800-10259 11/11 Rev A

