

WIFI MODULE INTERNAL PHOTOS

THE WIFI MODULE IS A 'DROP-IN MODULE FOR USE IN THE LYNXTOUCH2:

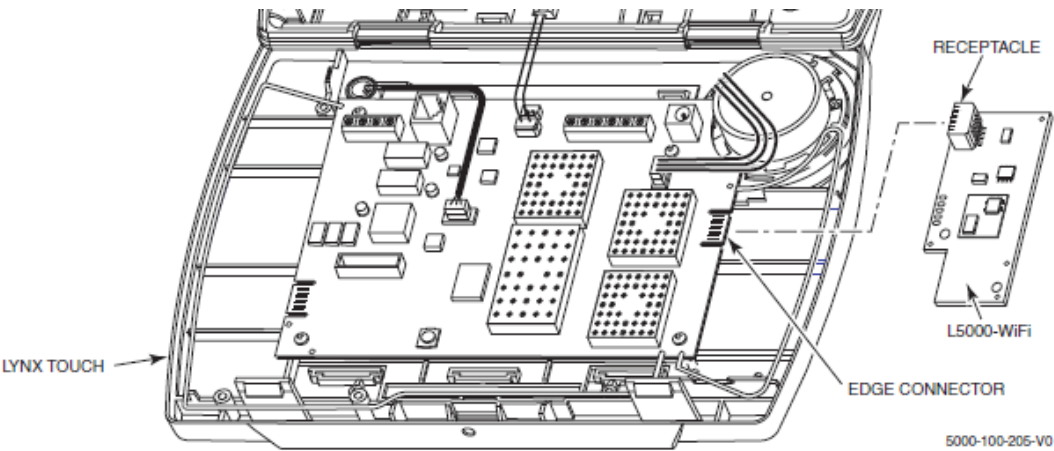
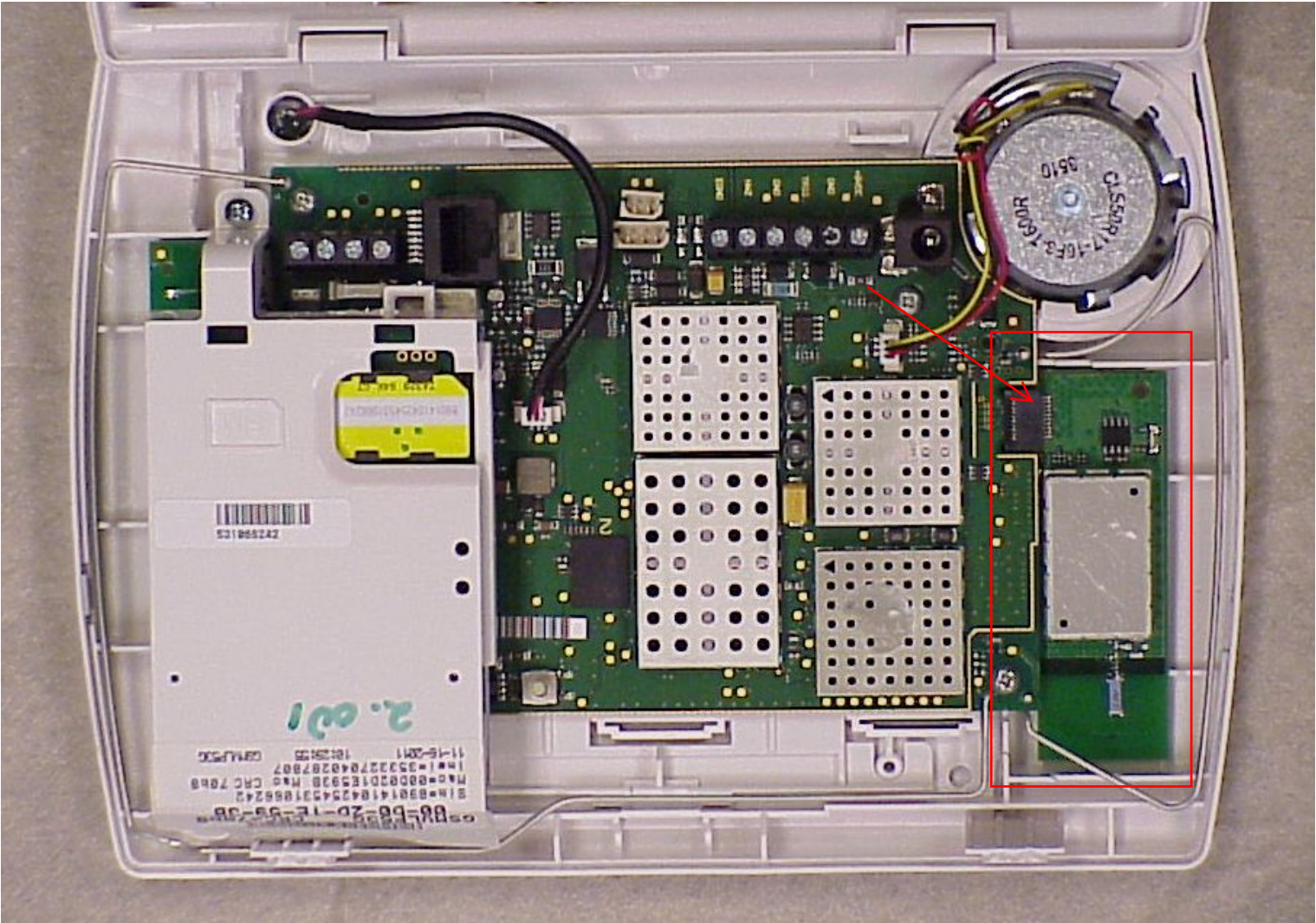


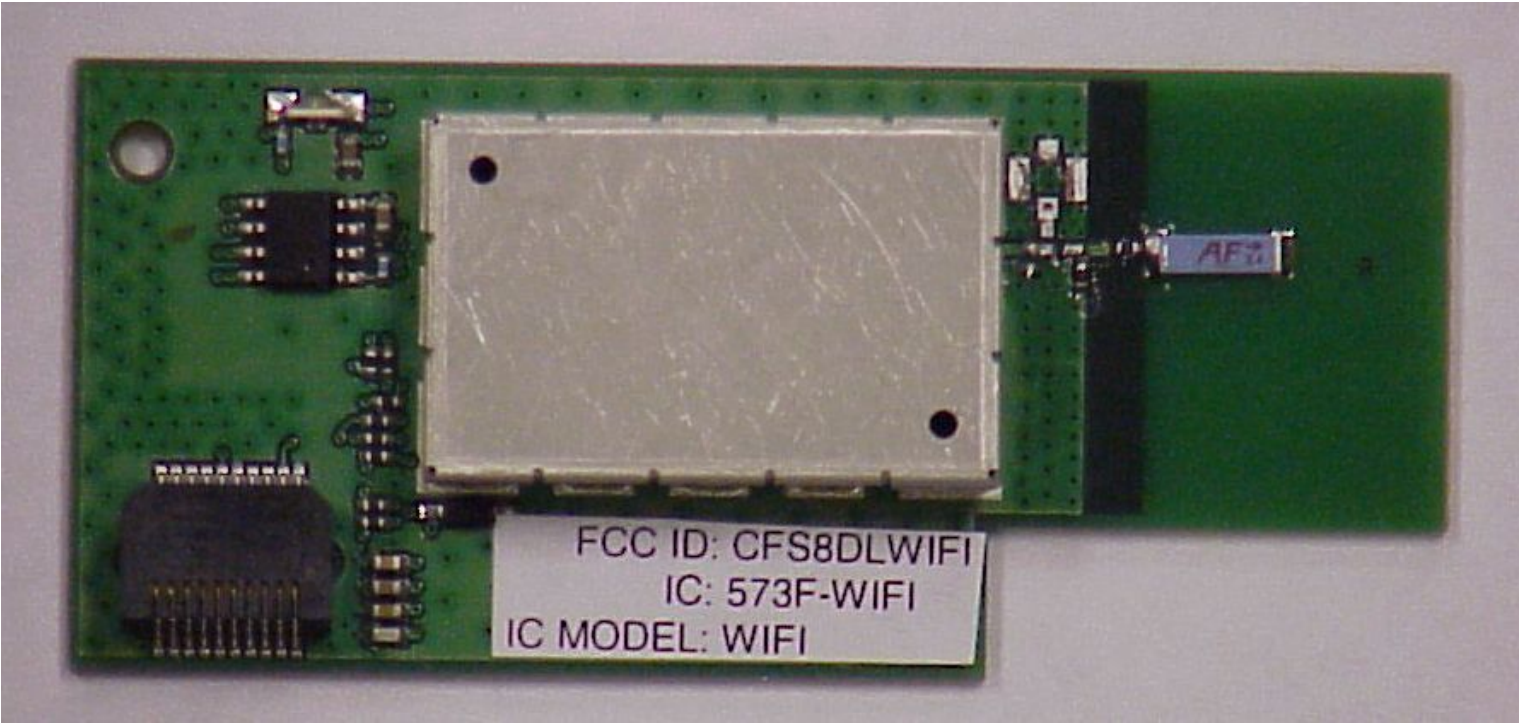
Figure 1. Installing the L5000-Wi-Fi Communications Module

THIS IS THE MODULE (DAUGHTER BOARD) MOUNTED ON THE LYNXTOUCH2 (MOTHERBOARD):

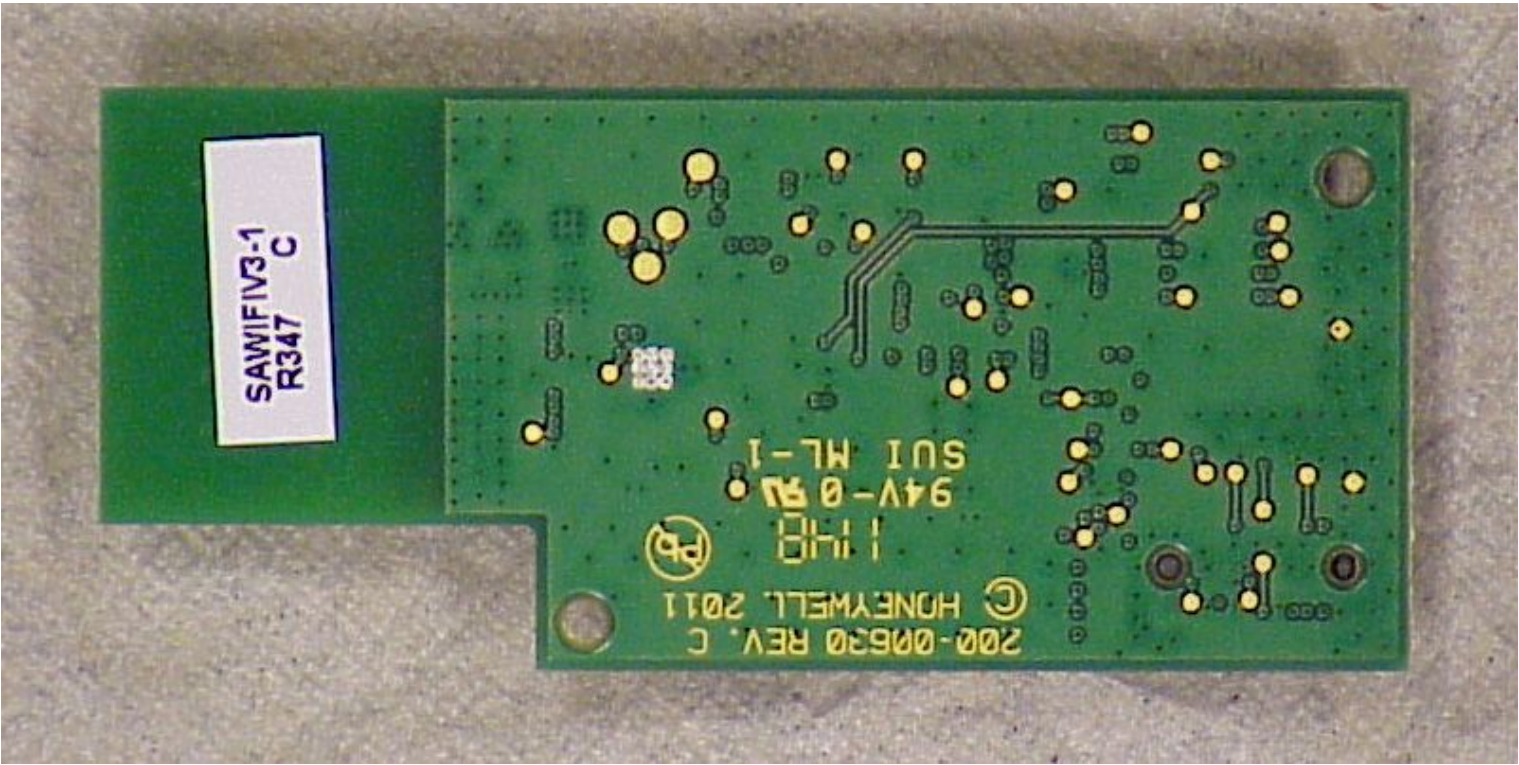




TOP OF WIFI PCB:



BOTTOM OF WIFI PCB:



TOP VIEW OF WIFI PCB WITH SHIELD REMOVED:

