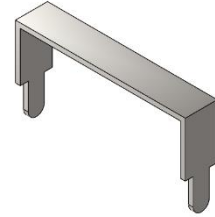


ALX21M-222AA7

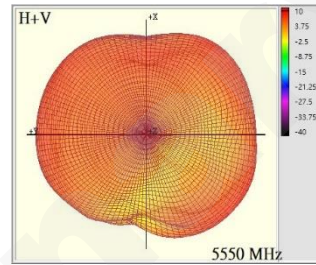
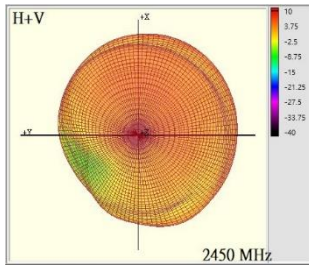
Features

- Dual band IEEE 802.11 a/b/g/n/ac/ax standard
- 2+5GHz indoor embedded SMD Omni-directional antenna
- High efficiency and quick integration



Applications

- Door Bell

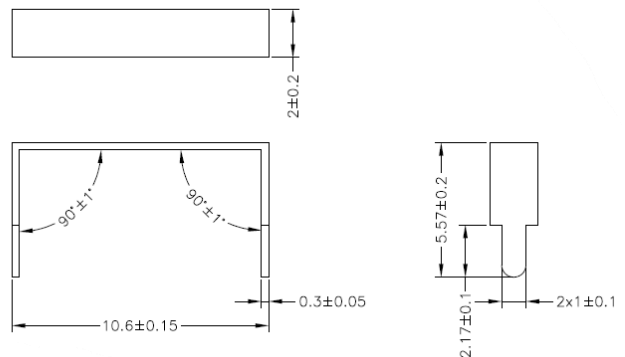


Electrical Specification

Category	Specification	
Frequency (MHz)	2400 - 2500	5150 - 5825
Peak Gain (dBi)	0.8	2.3
VSWR	2.0 : 1	
Polarization	Linear	
Power (Watts)	1	
Impedance (Ohms)	50	
Type	PIFA	

Mechanical Specification

Category	Specification
Dimension (mm)	10.6 x 2 x 5.57
Thickness (mm)	0.3
Weight (g)	TBD
Connector	N/A
Cable	N/A
Cable Length (mm)	N/A
Material	SUS430
Operating Temp (°C)	-40°C ~ +85°C
Storage Temp (°C)	23 ± 5°C
Storage Humidity (%)	30% ~ 70%



LYNwave Technology Ltd.
5F., No. 655, Xuecheng Rd., Shulin Dist.,
New Taipei City,
23854, Taiwan

Website: www.lynwave.com
Tel: +886 2 3501 8700
Email: service@lynwave.com

