

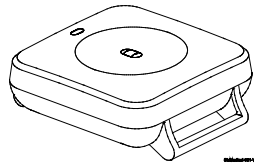
SiXMEDICAL

1-Button Wireless Key

Installation Instructions

This bi-directional wireless key is intended for use with Honeywell controls that support SiX™ series devices.

To activate, press and hold the button about 3 seconds until the LED flashes. To clear the alarm at the control, enter a user code. To clear memory of alarm, select Disarm and enter a user code.



The device can be used with a belt clip, lanyard, or wristband.

[images of belt clip, wristband, necklace]

LED Indications

Green flashing: lights when unit is transmitting
Red Flashing: indicates low battery (lights during key press)

Enroll and Program the SiXMEDICAL

For the Lyric™ Controller

Follow instructions in the Controller's programming guide.

1. Set the *Lyric Controller* in Programming Mode: **Security > Tools > [installer code] > Program > (scroll down) > SiX Programming**.

2. Press and hold the button for about 3 seconds until the LED flashes to activate the enrollment process.

3. The LED flashes green during enrollment (up to about 20 seconds).

NOTE: Enrollment time varies depending on the signal strength between the device and the controller.

- The device sends its unique MAC ID (Serial Number) and Services information to the controller.
- The controller registers the device and displays the transmitter data on screen.

4. When done, the LED lights solid green for 3 seconds to confirm enrollment.

If enrollment is not confirmed, press and hold the button again for about 3 seconds to restart the enrollment process.

5. Press **Edit** to set the Alarm Report option on/off (if selected, button press sends a report to the central station). Press **Save**. Enter an appropriate Zone Descriptor. Press **Save**.

The device can also be manually enrolled. See the Controller's Programming Guide for details.

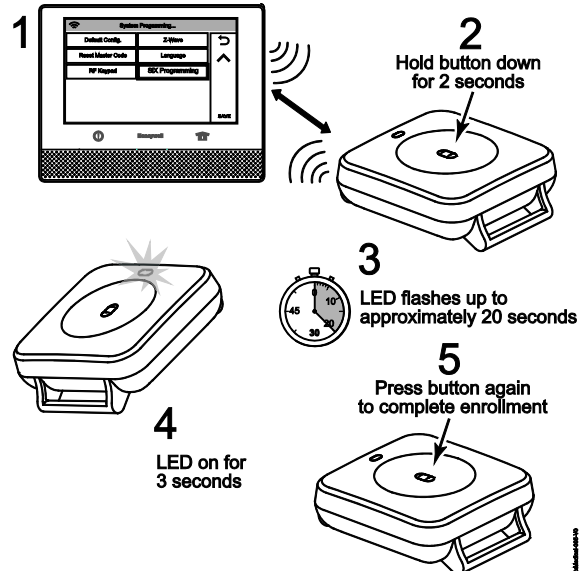
For the Lyric™ Gateway

Enroll and program using AlarmNet 360™.

For other Controls

For other Controls that support SiX Series devices, see the controller's instructions for enrollment details.

Security > Tools > [installer code] > Program > (scroll down) > SiX Programming



IMPORTANT: Once enrolled in a system, the SiXMEDICAL cannot be used with another controller until it is removed from the current controller. When removed from a system, the key fob will revert to factory default settings.

Sensor Location Feature: To verify the location of each SiX device in an installation, enter programming mode and select a SiX device. The device LED lights. Select it again to turn the LED off, or select the next device to locate.

After Enrolling: Verify adequate signal strength by conducting Go/No Go tests (see controller's instructions) with the device in its intended mounting location. Adjust the device location as necessary.

24-Hour Enrollment Deletion and Default

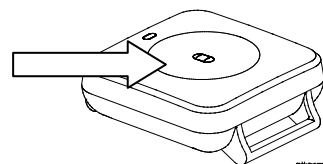
If the device is enrolled in a panel different than the intended panel, and you are unable to delete it from the unintended panel, reset the device to factory default setting:

Press and hold the button for 15 seconds.

The device self-deletes from the panel it was enrolled in.

This procedure is available for 24 hours after enrollment with a panel and the device remains powered (battery installed).

Press and hold button 15 seconds.

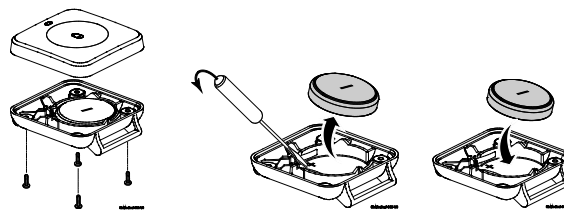


Battery Replacement

When the battery is low, the LEDs do not flash during transmission. To replace the battery:

1. Remove the screws from the back housing and use a screwdriver to gently separate the front and back housings.
2. Use a screwdriver to carefully remove the battery.
3. Wait 10 seconds or press a key fob button for 2 seconds to ensure full power discharge.
4. Insert a new 3V Coin Cell battery as shown. Recommended replacement battery:
Recommended Batteries: 3V Coin Cell
Honeywell BL3-0004 (CR2450); Duracell DL2450;
Panasonic CR2450; Energizer CR2450

Replace the front housing and secure the housings with the cover screw.



Replacing the Battery

BATTERY CAUTION: Risk of fire, explosion and burns. Do not recharge, disassemble, heat above 212 F (100 C) or incinerate. Dispose of used batteries properly. Keep away from children.

NOTE: Constant exposure to high or low temperature or high humidity may reduce battery life.

Specifications

Battery: 1 x 3V Coin Cell, Honeywell BL3-0004 (CR2450); Duracell DL2450; Panasonic CR2450; Energizer CR2450

RF Frequency: 2.4GHz

Operating Temperature: 0° to 50° C / 32° to 122° F
(Agency compliance 0° to 49° C / 32° to 120° F)

Relative Humidity: 95% max. (Agency compliance – 93% max.), non-condensing

Dimensions: 0.5" H x 1.5" L x 1.5" W / 13 mm H x 38 mm L x 38 mm W

Approval Listings:

FCC / IC

cETLus Listed

Conforms to UL 1023 & UL 985

Certified to ULC ORD- C1023

& ULC-S545

Other Standards:

SIA CP-01 RoHS C-Tick



Product must be tested at least once each year.

IMPORTANT! This wireless key is intended as a convenience to the user and should not be considered as a life safety device.

IMPORTANT SECURITY NOTICE

Please inform the User about the security importance of their wireless key (key fob), and what to do if it is lost.

Explain that the key fob is similar to their keys or access card. If lost or stolen, another person can compromise their security system. They should immediately notify the Dealer/Installer of a lost or stolen key fob. The Dealer/Installer will then remove the key fob programming from the security system.

FEDERAL COMMUNICATIONS COMMISSION & INDUSTRY CANADA STATEMENTS

The user shall not make any changes or modifications to the equipment unless authorized by the Installation Instructions or User's Manual. Unauthorized changes or modifications could void the user's authority to operate the equipment.

FCC / IC STATEMENT

This device complies with Part 15 of the FCC Rules, and Industry Canada's license-exempt RSSs. Operation is subject to the following two conditions: (1) This device may not cause harmful interference, and (2) This device must accept any interference received, including interference that may cause undesired operation.

Cet appareil est conforme à la partie 15 des règles de la FCC et exempt de licence RSS d'Industrie Canada. Son fonctionnement est soumis aux conditions suivantes: (1) Cet appareil ne doit pas causer d'interférences nuisibles. (2) Cet appareil doit accepter toute interférence reçue y compris les interférences causant une réception indésirable.

RF EXPOSURE

Warning – The antenna(s) used for this device must not be co-located or operating in conjunction with any other antenna or transmitter except in accordance with FCC andISED multi-transmitter product procedures.

Mise en Garde

Exposition aux Fréquences Radio : La/les antenne(s) utilisée(s) pour cet émetteur ne pas être située(s) ni fonctionner parallèlement à tout autre transmetteur ou antenne, excepté en conformité avec les procédures de produit multi transmetteur FCC et ISED.

REFER TO THE INSTALLATION INSTRUCTIONS FOR THE CONTROL WITH WHICH THIS DEVICE IS USED, FOR DETAILS REGARDING LIMITATIONS OF THE ENTIRE ALARM SYSTEM.

Support and Warranty

For the latest documentation and online support information, please go to:
<https://mywebtech.honeywell.com/>

For the latest warranty information, please go to:
www.honeywell.com/security/hsc/resources/wa.

For patent information, see www.honeywell.com/patents



MyWebTech



Warranty



Patents