

5800FLOOD Flood Detector & Temperature Sensor

INSTALLATION INSTRUCTIONS

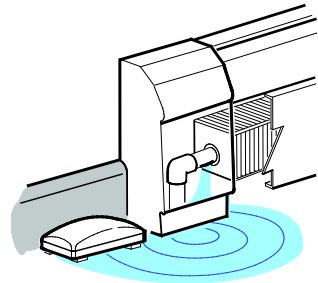
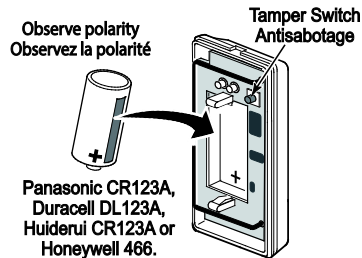
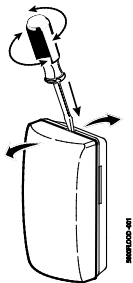
The ADEMCO 5800FLOOD Flood Detector & Temperature Sensor is a wireless transmitter used with Honeywell's alarm systems that support 5800 series devices. Applications include bathrooms, laundry rooms, boilers and basements etc.

The 5800FLOOD:

- can serve as a hot and/or cold temperature sensor via internal thermal sensor
(sends alarm to control when temperature is lower than 45°F (Cold condition) or above 95°F, (Hot condition).
- can serve as a Water leakage or Flood Detector via built-in metal contacts on the bottom of the unit
(sends alarm to control within approximately 40 seconds after water has come in contact with the metal probes.)
- does not require external probes
- functions (modes) set by programming pre-defined device loop numbers (see table 1) to separate zones in the control panel.
- provides tamper supervision, which sends a trouble signal to the control if the unit's cover is removed.

INSTALLATION

Check Signal Strength: Before installing permanently, conduct Go/No Go tests (see control's instructions) to verify adequate signal strength from the planned location. Adjust the device location as necessary.



Water Leak Detection

Place the device on the floor or other desired location near any area that potentially can be subject to a water leak condition (ex. floor near or inside a kitchen cabinet, near the base of a refrigerator, in a bathroom, basement, etc.).

Make sure the metal contacts at the bottom of the enclosure are clean and free of any debris before positioning the unit in place.

To ensure the unit remains in place, use the double-sided tape to adhere unit to the floor or other surface.

IMPORTANT: After a water leak detection event, make sure the contacts and the unit are completely dry and free of any debris before relocating the device.

Temperature Sensing

Mount the device low on a wall in the desired location with double-sided adhesive tape (supplied).

If used solely as a temperature sensor, the 5800FLOOD can be mounted low on a wall with double-sided adhesive tape (supplied).

Instructions d'installation

Ce contact de porte / fenêtre sans fil est conçu pour être utilisé avec les panneaux de commande Honeywell qui supportent les dispositifs de la série 5800. Applications include bathrooms, laundry rooms, boilers and basements etc.

The 5800FLOOD:

- can serve as a hot and/or cold temperature sensor via internal thermal sensor
(sends alarm to control when temperature is lower than 45°F (Cold condition) or above 95°F, (Hot condition).
- can serve as a Water leakage or Flood Detector via built-in metal contacts on the bottom of the unit
(sends alarm to control within approximately 40 seconds after water has come in contact with the metal probes.)
- does not require external probes
- functions (modes) set by programming pre-defined device loop numbers (see table 1) to separate zones in the control panel.
- provides tamper supervision, which sends a trouble signal to the control if the unit's cover is removed.

INSTALLATION

Check Signal Strength: Before installing permanently, conduct Go/No Go tests (see control's instructions) to verify adequate signal strength from the planned location. Adjust the device location as necessary.

Water Leak Detection

Place the device on the floor or other desired location near any area that potentially can be subject to a water leak condition (ex. floor near or inside a kitchen cabinet, near the base of a refrigerator, in a bathroom, basement, etc.).

Make sure the metal contacts at the bottom of the enclosure are clean and free of any debris before positioning the unit in place.

To ensure the unit remains in place, use the double-sided tape to adhere unit to the floor or other surface.

IMPORTANT: After a water leak detection event, make sure the contacts and the unit are completely dry and free of any debris before relocating the device.

Temperature Sensing

Mount the device low on a wall in the desired location with double-sided adhesive tape (supplied).

If used solely as a temperature sensor, the 5800FLOOD can be mounted low on a wall with double-sided adhesive tape (supplied).

IMPORTANT:

- Do not install this device on or near metal objects, Avoid locating the device near wiring such as AC, telephone, HVAC, computer data cables, etc.
- Avoid mounting the detector near heat generating devices (e.g. ovens, heat vents, furnaces, boilers) or on a metal cabinet.
- DO NOT remove the circuit board from the back case.

PROGRAMMING (Setting the Operating Mode)

Table 1 lists the functions of the 5800FLOOD with their respective loop numbers.

Program each desired loop function as a separate zone in the control panel.

1. Enter the control's Zone Programming mode.
2. Assign a zone number for each loop used.
Loop = 1, 2, or 3 (see table for loop functions)
Zone Type = choose a zone type based on desired operation (ex. 24-Hr. Aux, Waterflow)
Input Type = 03 (Supervised RF)
3. When prompted for the serial number, press and release the unit's tamper switch twice.
Alternatively, you can manually enter the sensor serial number found on the unit's label.

IMPORTANT:

- Do not install this device on or near metal objects, Avoid locating the device near wiring such as AC, telephone, HVAC, computer data cables, etc.
- Avoid mounting the detector near heat generating devices (e.g. ovens, heat vents, furnaces, boilers) or on a metal cabinet.
- DO NOT remove the circuit board from the back case.

PROGRAMMING (Setting the Operating Mode)

Table 1 lists the functions of the 5800FLOOD with their respective loop numbers.

Program each desired loop function as a separate zone in the control panel.

1. Enter the control's Zone Programming mode.
2. Assign a zone number for each loop used.
Loop = 1, 2, or 3 (see table for loop functions)
Zone Type = choose a zone type based on desired operation (ex. 24-Hr. Aux, Waterflow)
Input Type = 03 (Supervised RF)
3. When prompted for the serial number, press and release the unit's tamper switch twice.
Alternatively, you can manually enter the sensor serial number found on the unit's label.

Table 1

Mode	Loop	Fault Occurs When	After...	Restore when ...	After...
Flood	Loop 3	probe contacts water	40 sec	no contact with water and contacts are dry	40 sec
Temperature		Temperature is..		Temperature is..	
Cold	Loop 1	below 45°F (7°C)	15 min	above 45°F (7°C)	15 min
Hot	Loop 2	above 95°F (35°C)		below 95°F (35°C)	

Table 1 (French)

Mode	Loop	Fault Occurs When	After...	Restore when ...	After...
Flood	Loop 3	probe contacts water	40 sec	no contact with water and contacts are dry	40 sec
Temperature		Temperature is..		Temperature is..	
Cold	Loop 1	below 45°F (7°C)	15 min	above 45°F (7°C)	15 min
Hot	Loop 2	above 95°F (35°C)		below 95°F (35°C)	

TESTING

1. With the control panel in Test mode, remove & replace device cover to activate.
2. System keypad should beep and display each programmed zone (loop).
3. Exit control's test mode.

TESTING

1. With the control panel in Test mode, remove & replace device cover to activate.
2. System keypad should beep and display each programmed zone (loop).
3. Exit control's test mode.

MAINTAINING PROPER OPERATION

To maintain the detector in proper working condition, it is important that you observe the following:

- Replace the battery when a low battery condition is reported.
- Make sure the unit is situated flat on the floor, or any other surface and make sure the contacts are not blocked by debris or dirt as these will affect conductivity of water in the area.
- Clean and dry the metal probes before reusing the device following the water leak detection.
- It is recommended to get the advice of the alarm company to relocate the device.

MAINTAINING PROPER OPERATION

To maintain the detector in proper working condition, it is important that you observe the following:

- Replace the battery when a low battery condition is reported.
- Make sure the unit is situated flat on the floor, or any other surface and make sure the contacts are not blocked by debris or dirt as these will affect conductivity of water in the area.
- Clean and dry the metal probes before reusing the device following the water leak detection.
- It is recommended to get the advice of the alarm company to relocate the device.

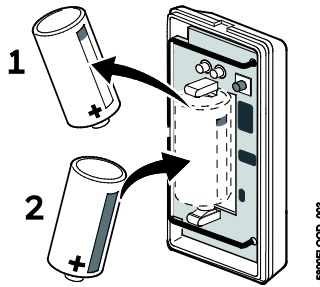
BATTERY REPLACEMENT

After removing the battery, wait at least 30 seconds before installing the new one. Use only the following 3V Lithium batteries:

- Panasonic CR123A
- Huiderei CR123A
- Duracell DL123A
- Honeywell 466

CAUTION: Risk of fire, explosion, and burns. Do not recharge, disassemble, heat above 212°F (100°C) or incinerate. Dispose of used batteries properly. Keep away from children.

NOTE: Constant exposure to high or low temperature or high humidity may reduce battery life.



BATTERY REPLACEMENT

After removing the battery, wait at least 30 seconds before installing the new one. Use only the following 3V Lithium batteries:

- Panasonic CR123A
- Huiderei CR123A
- Duracell DL123A
- Honeywell 466

Attention de batterie : Risque d'incendie, d'explosion et de brûlures. Ne rechargez pas, démonter, chauffer au-dessus de 212° F (100°C), ou incinérer. Débarrassez-vous des batteries utilisées de façon appropriée. Gardez à partir des enfants.

NOTE : Une exposition constante à des températures élevées ou basses ou à un taux d'humidité élevée peut réduire la durée de vie de la pile.

SPECIFICATIONS

Battery Type	3V Lithium , CR123A (battery life ~4-5 years)
Standby Current Consumption	3µA maximum
Low Battery Detection	2.8V ±20mV
Unit (Battery) Shut Down	1.8V ±20mV
RF Frequency	344.94MHZ (5800 protocol)
RF Range	200ft (60m) nominal indoors from wireless transmitters (the actual range to be determined with the security system in the Test mode).
Operational Temperature	14°F to 104°F (-10°C to +40°C)
Cold- Hot Alert detection	< 45°F for Cold, and ≥ 95°F for Hot (<7.2°C for Cold, and ≥ 35°C for Hot)
Water Sensing Probes	Stainless steel contacts
Water Leak Detection	Reports alarm within 30-40 seconds.
Dimensions	3.1" L x 1.6" W x 2.0" D max. (7.9cm L x 4.1mm W x 5.8mm D max.)

SPECIFICATIONS

Battery Type	3V Lithium , CR123A (battery life ~4-5 years)
Standby Current Consumption	3µA maximum
Low Battery Detection	2.8V ±20mV
Unit (Battery) Shut Down	1.8V ±20mV
RF Frequency	344.94MHZ (5800 protocol)
RF Range	200ft (60m) nominal indoors from wireless transmitters (the actual range to be determined with the security system in the Test mode).
Operational Temperature	14°F to 104°F (-10°C to +40°C)
Cold- Hot Alert detection	< 45°F for Cold, and ≥ 95°F for Hot (<7.2°C for Cold, and ≥ 35°C for Hot)
Water Sensing Probes	Stainless steel contacts
Water Leak Detection	Reports alarm within 30-40 seconds.
Dimensions	3.1" L x 1.6" W x 2.0" D max. (7.9cm L x 4.1mm W x 5.8mm D max.)

REFER TO THE INSTALLATION INSTRUCTIONS FOR THE CONTROL WITH WHICH THIS DEVICE IS USED, FOR DETAILS REGARDING LIMITATIONS OF THE ENTIRE ALARM SYSTEM.

POUR LES DÉTAILS CONCERNANT LES LIMITATIONS DU SYSTÈME DANS SON ENSEMBLE, REPORTEZ-VOUS AUX INSTRUCTIONS D'INSTALLATION DU PANNEAU DE COMMANDE AVEC LEQUEL LE DISPOSITIF EST UTILISÉ.

FCC / IC STATEMENT

FEDERAL COMMUNICATIONS COMMISSION & INDUSTRY CANADA STATEMENTS

The user shall not make any changes or modifications to the equipment unless authorized by the Installation Instructions or User's Manual. Unauthorized changes or modifications could void the user's authority to operate the equipment.

This device complies with Part 15 of the FCC rules and Industry Canada's license-exempt RSSs. Operation is subject to the following two conditions: (1) This device may not cause harmful interference, and (2) this device must accept any interference received, including interference that may cause undesired operation.

Unauthorized changes or modifications could void the user's authority to operate the equipment.

Cet appareil est conforme à la partie 15 des règles de la FCC & et exempt de licence RSS d'Industrie Canada. Son fonctionnement est soumis aux conditions suivantes: (1) Cet appareil ne doit pas causer d'interférences nuisibles. (2) Cet appareil doit accepter toute interférence reçue y compris les interférences causant une réception indésirable.

Support and Warranty / Soutien et Garantie

For online support information, please go to: <https://mywebtech.honeywell.com/>
Pour de l'assistance en ligne, visitez : <https://mywebtech.honeywell.com/>

For the latest warranty information, go to: www.honeywell.com/security/hsc/resources/wa
Pour les dernières informations de garantie, s'il vous plaît aller à :
www.honeywell.com/security/hsc/resources/wa

For patent information, see www.honeywell.com/patents
Pour des informations sur les brevets, voir www.honeywell.com/patents



MyWebTech



Warranty
Garantie



Patents
Brevets

Honeywell is a registered trademark of Honeywell International Inc. All other trademarks are the properties of their respective owners. All rights reserved.

Honeywell des marque déposée de Honeywell International Inc. Toutes les autres marques de commerce appartiennent à leurs propriétaires respectifs. Tous droits réservés.

Honeywell

2 Corporate Center Drive, Suite 100
P.O. Box 9040, Melville, NY 11747
© 2017 Honeywell International Inc.
www.honeywell.com/security



800-23123 8/17 Rev A