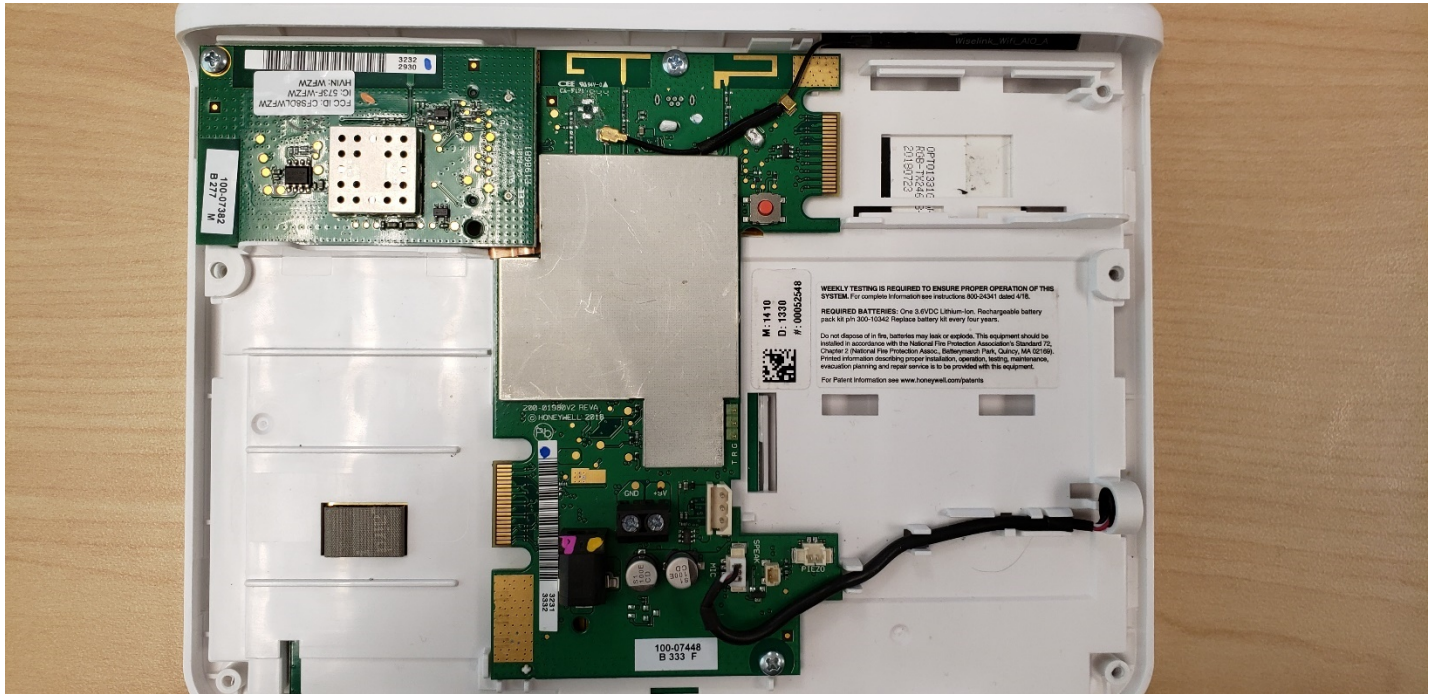
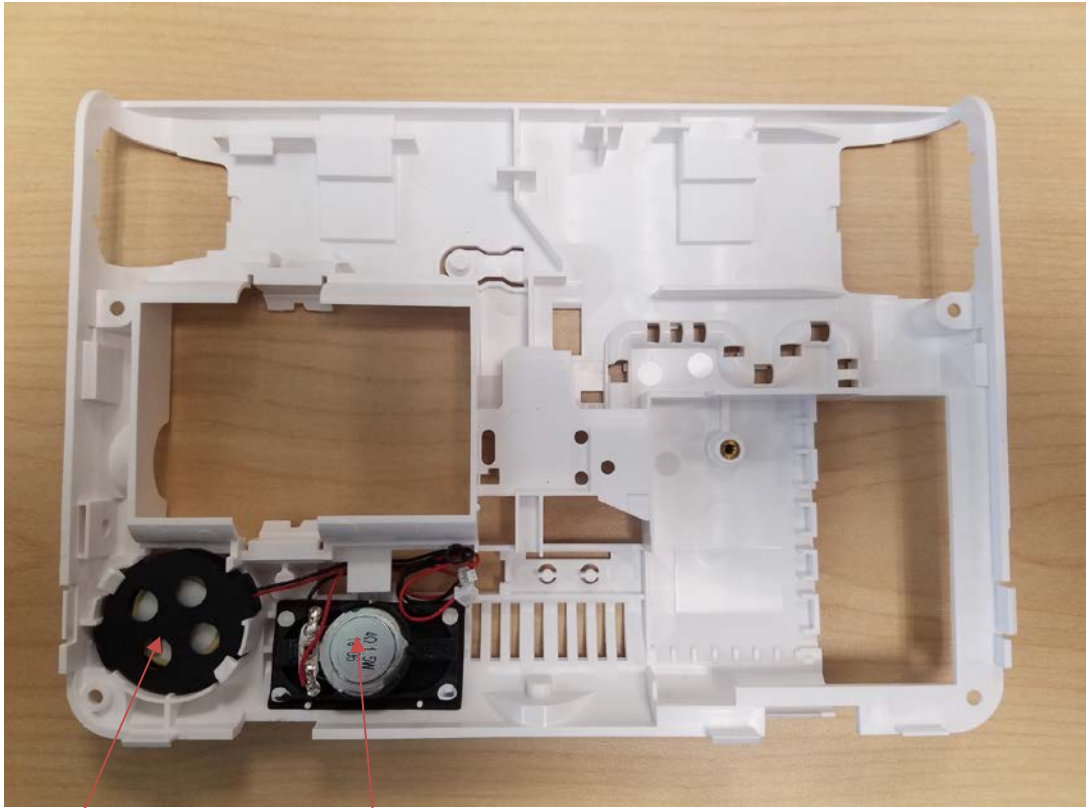


# GRIP DEFENDER INTERNAL PHOTOS

## FRONT ENCLOSURE - INTERIOR



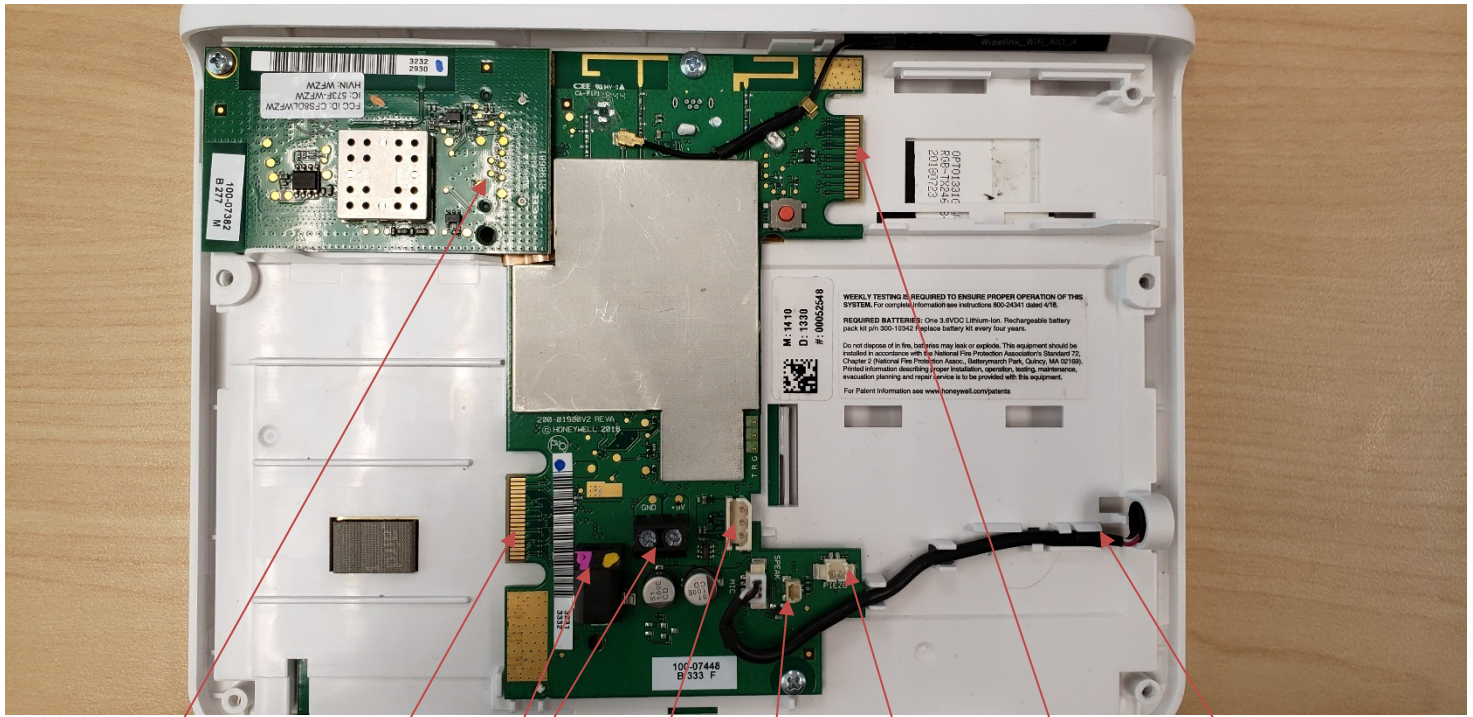
REAR ENCLOSURE - INTERIOR



SPEAKER

PIEZO

FRONT ENCLOSURE - INTERIOR



WiFi/Zwave  
Expansion  
Module Slot

Cellular Module  
Expansion Slot

AC  
Input

Battery  
Connection

Speaker  
Connection

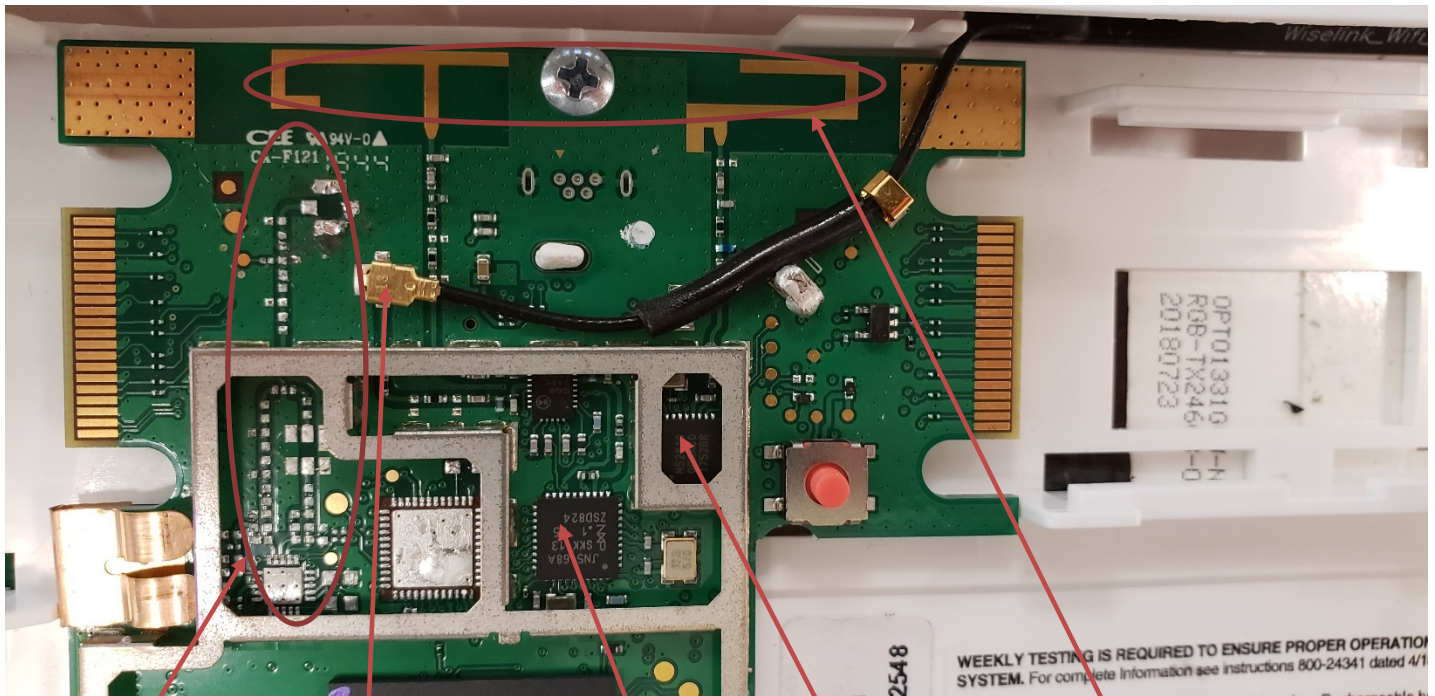
Piezo  
Connection

Expansion Slot  
(For Future Use)

Microphone



MAIN PCB TOP – WITHOUT SHIELD



Removed  
Wiselink  
Components

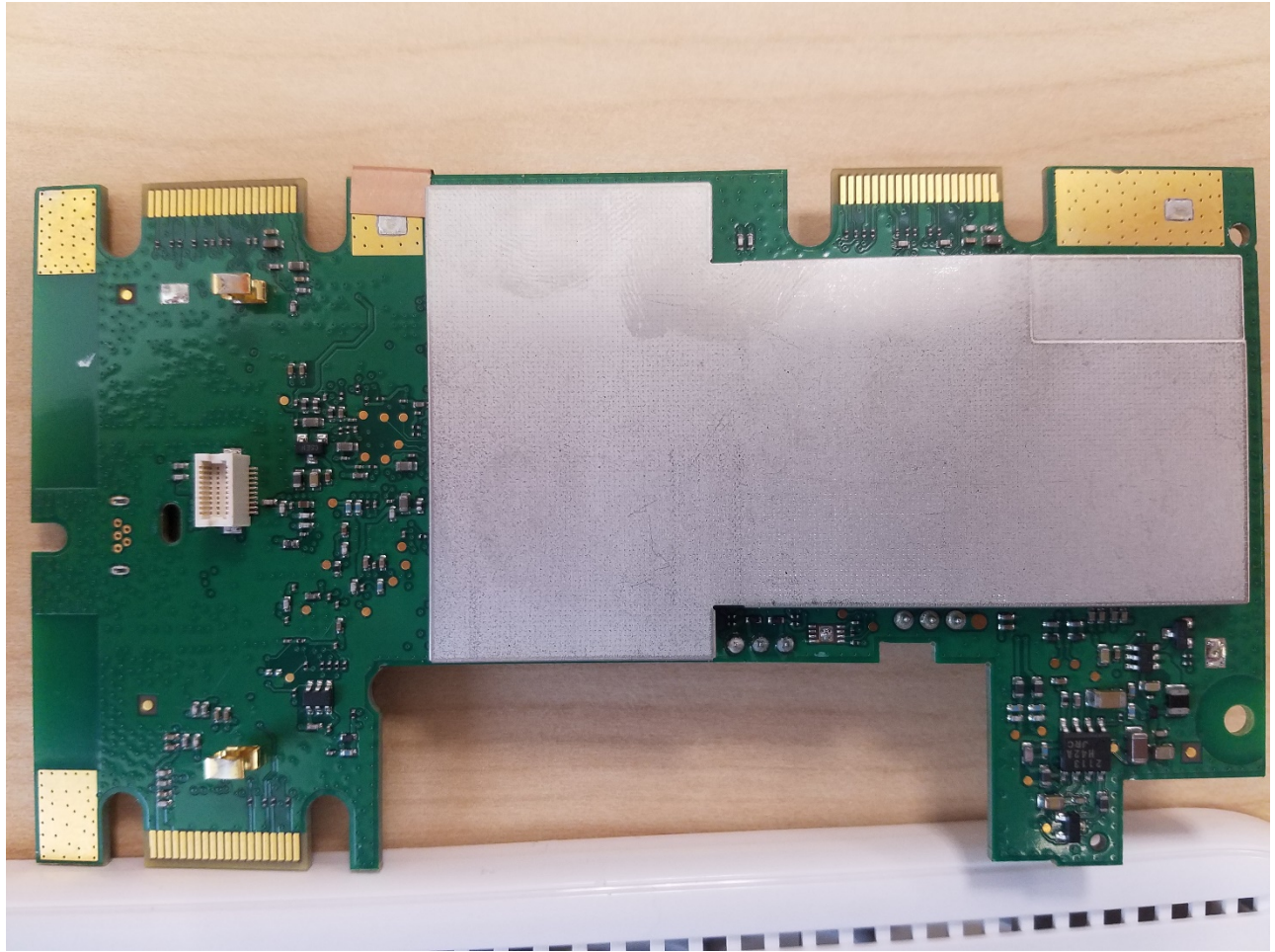
Secondary  
RF6  
Antenna  
Connection

RF6  
Radio  
Block

Bluetooth  
Radio  
Block

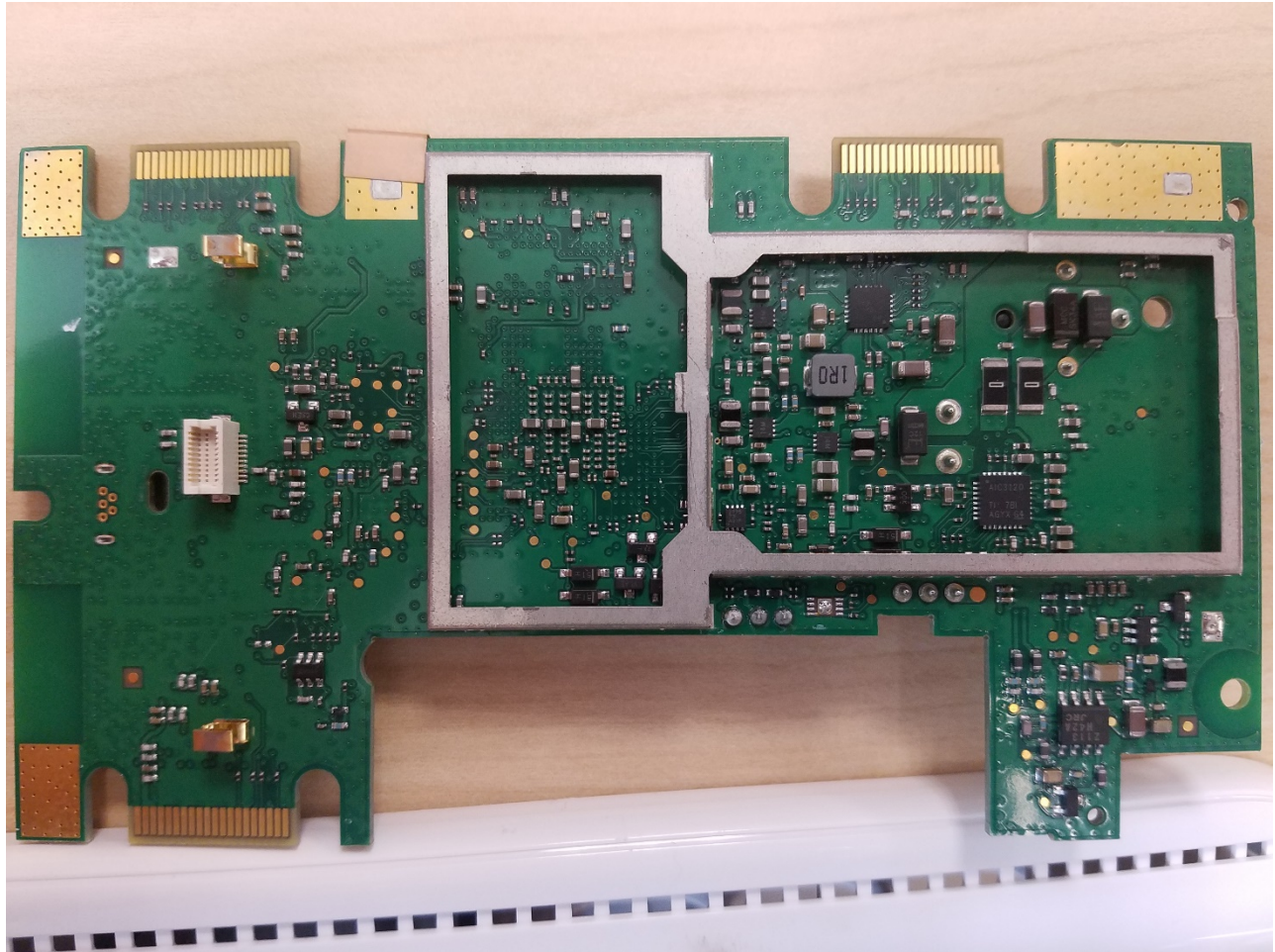
Bluetooth  
& Primary  
RF6  
Antenna  
(Shared)

MAIN PCB BOTTOM – WITH SHIELD

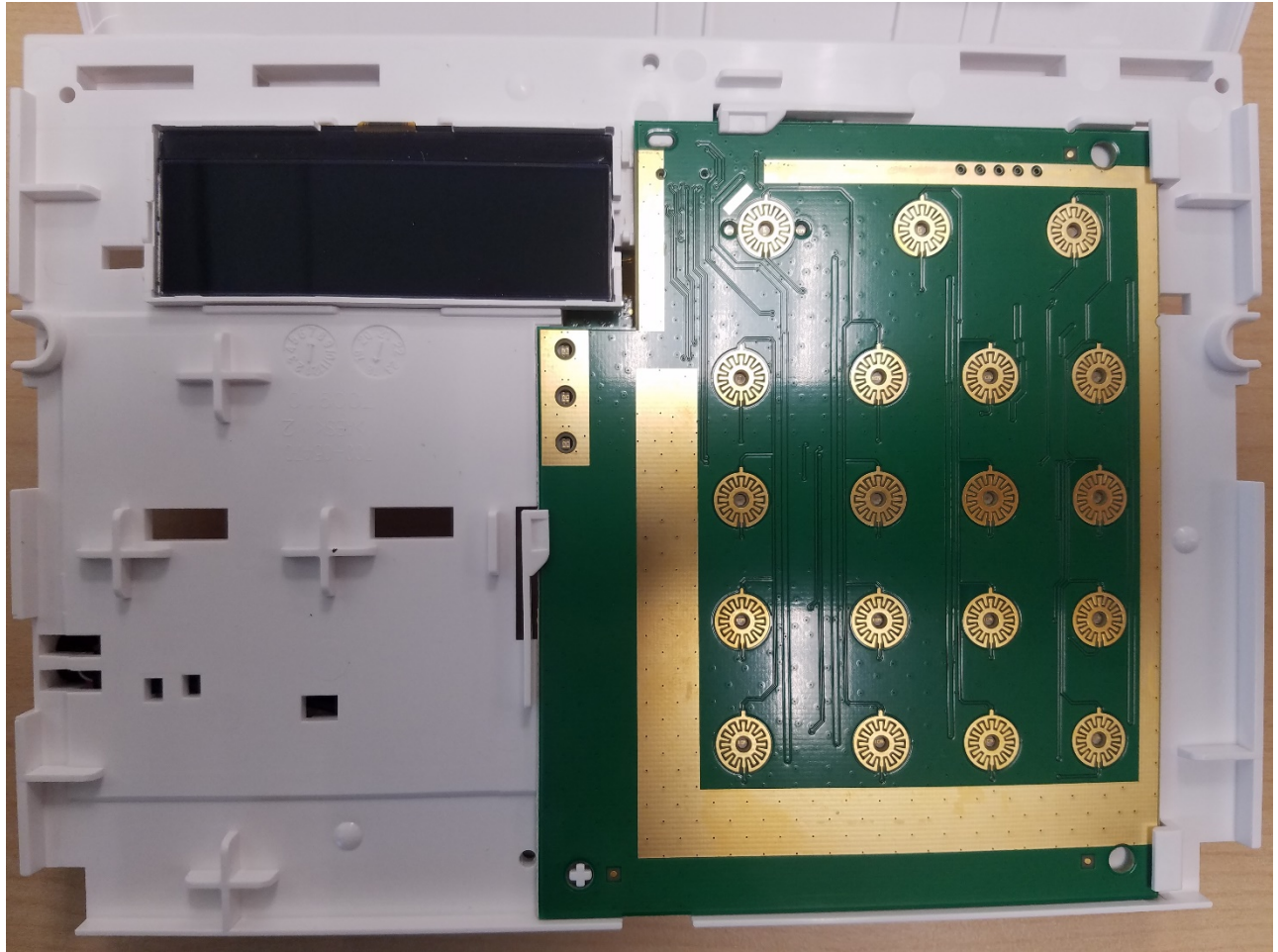




MAIN PCB BOTTOM – WITHOUT SHIELD

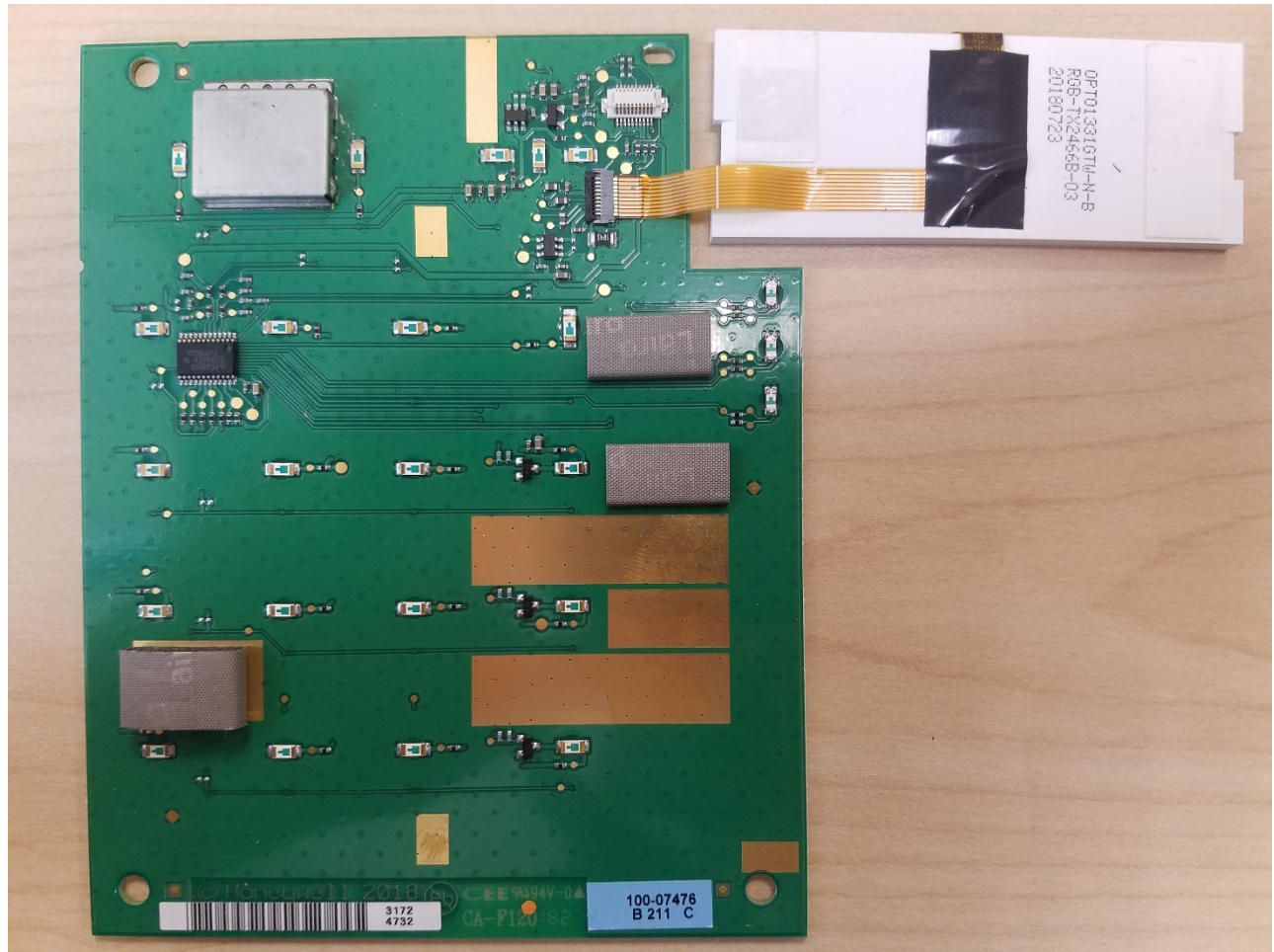


FRONT ENCLOSURE – KEYPAD PCB & LED DISPLAY, BOTTOM, INSTALLED





KEYPAD PCB & LED DISPLAY, TOP





FRONT ENCLOSURE – PCB's REMOVED



KEYPAD

