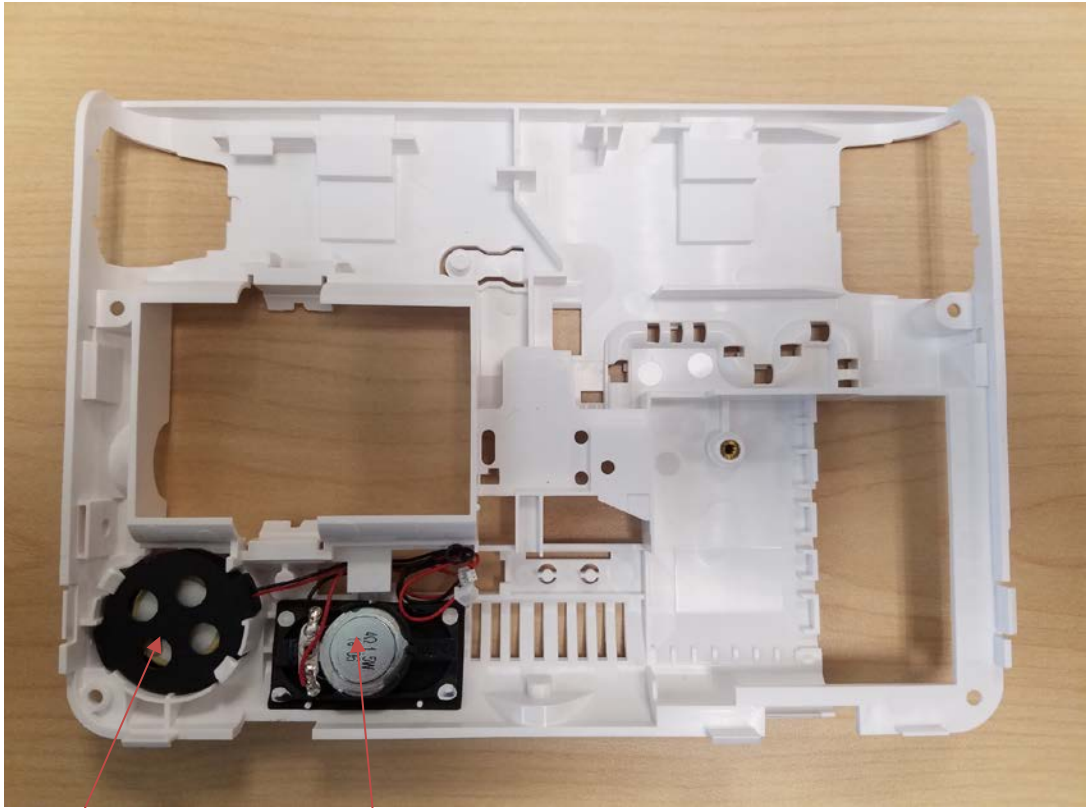


GRIP DEFENDER INTERNAL PHOTOS

FRONT ENCLOSURE - INTERIOR



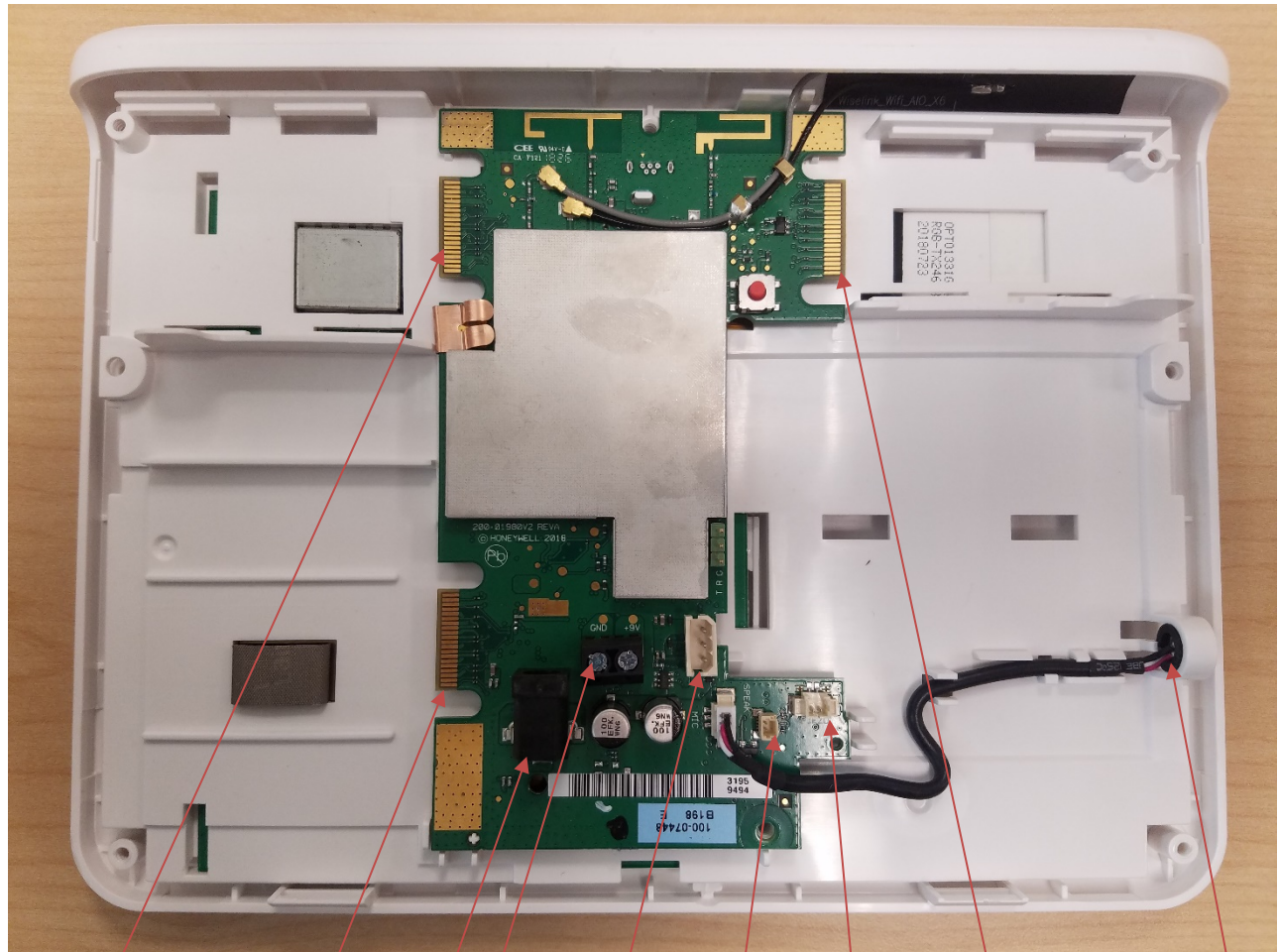
REAR ENCLOSURE - INTERIOR



SPEAKER

PIEZO

FRONT ENCLOSURE - INTERIOR



WiFi/Zwave
Expansion
Module Slot

Cellular Module
Expansion Slot

AC
Input

Battery
Connection

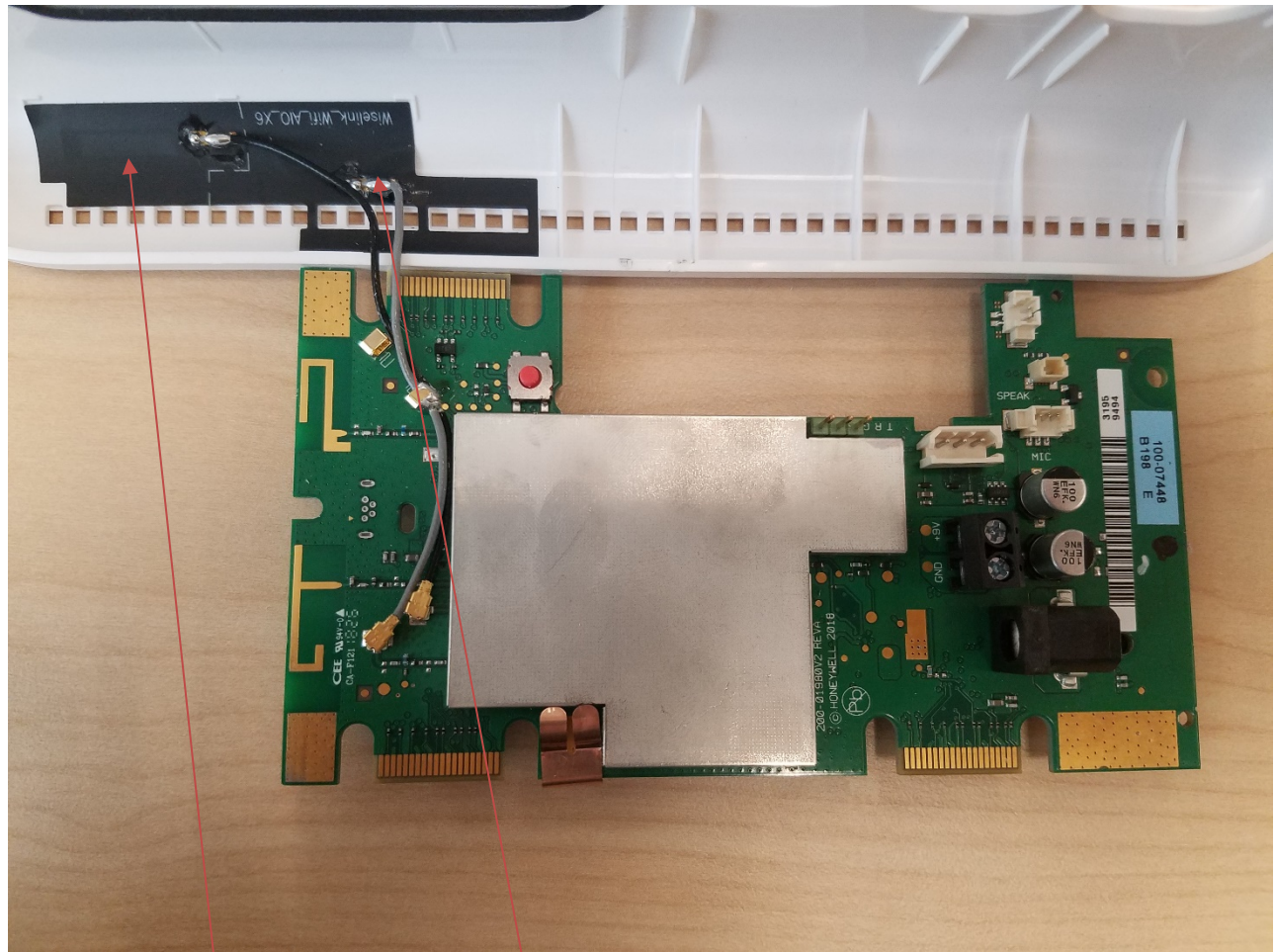
Speaker
Connection

Piezo
Connection

Expansion Slot
(For Future Use)

Microphone

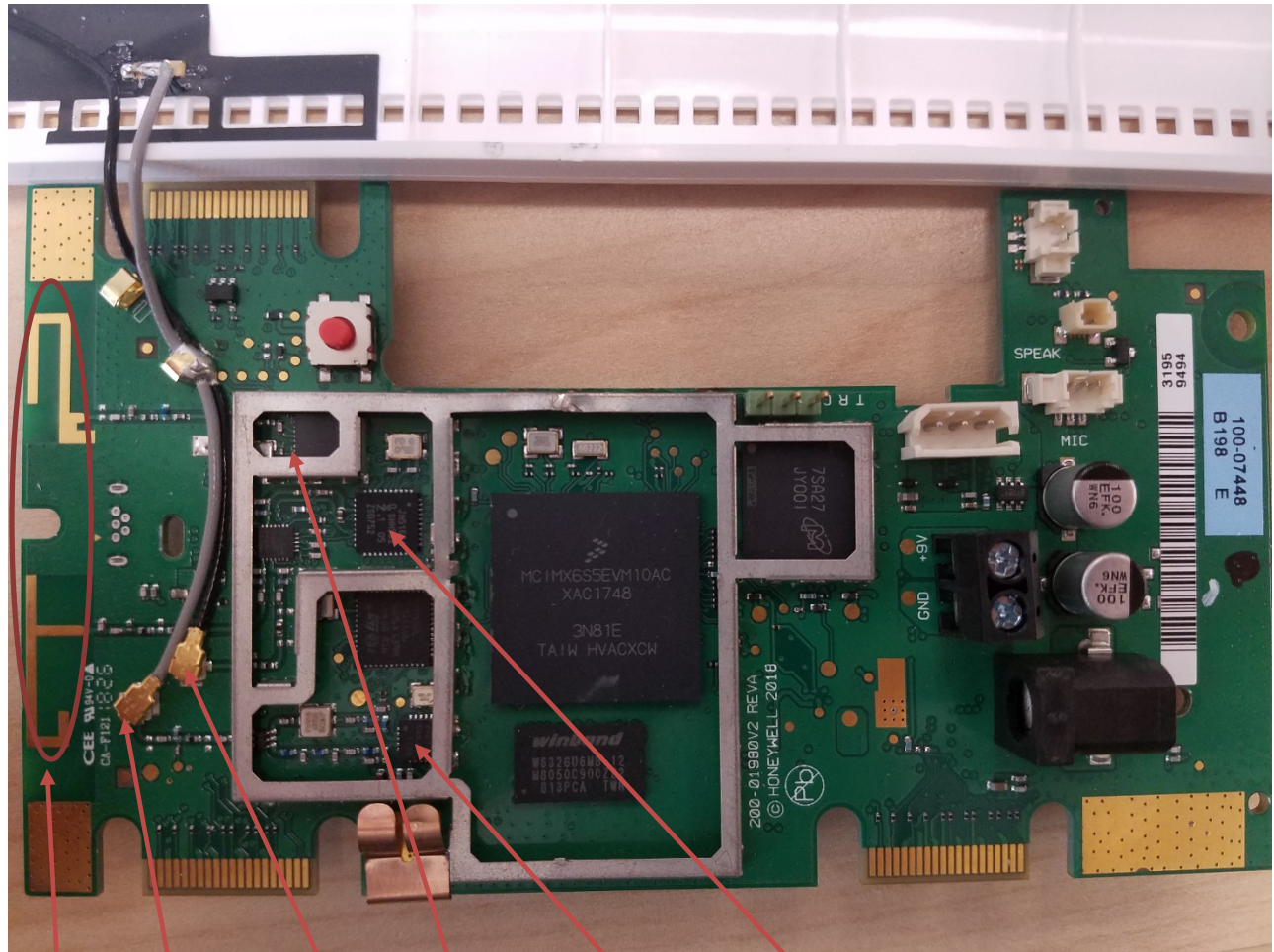
MAIN PCB TOP – WITH SHIELD



Wiselink
Antenna

Secondary
RF6
Antenna

MAIN PCB TOP – WITHOUT SHIELD



Bluetooth & Primary RF6 Antenna (Shared)

Secondary RF6 Antenna Connection

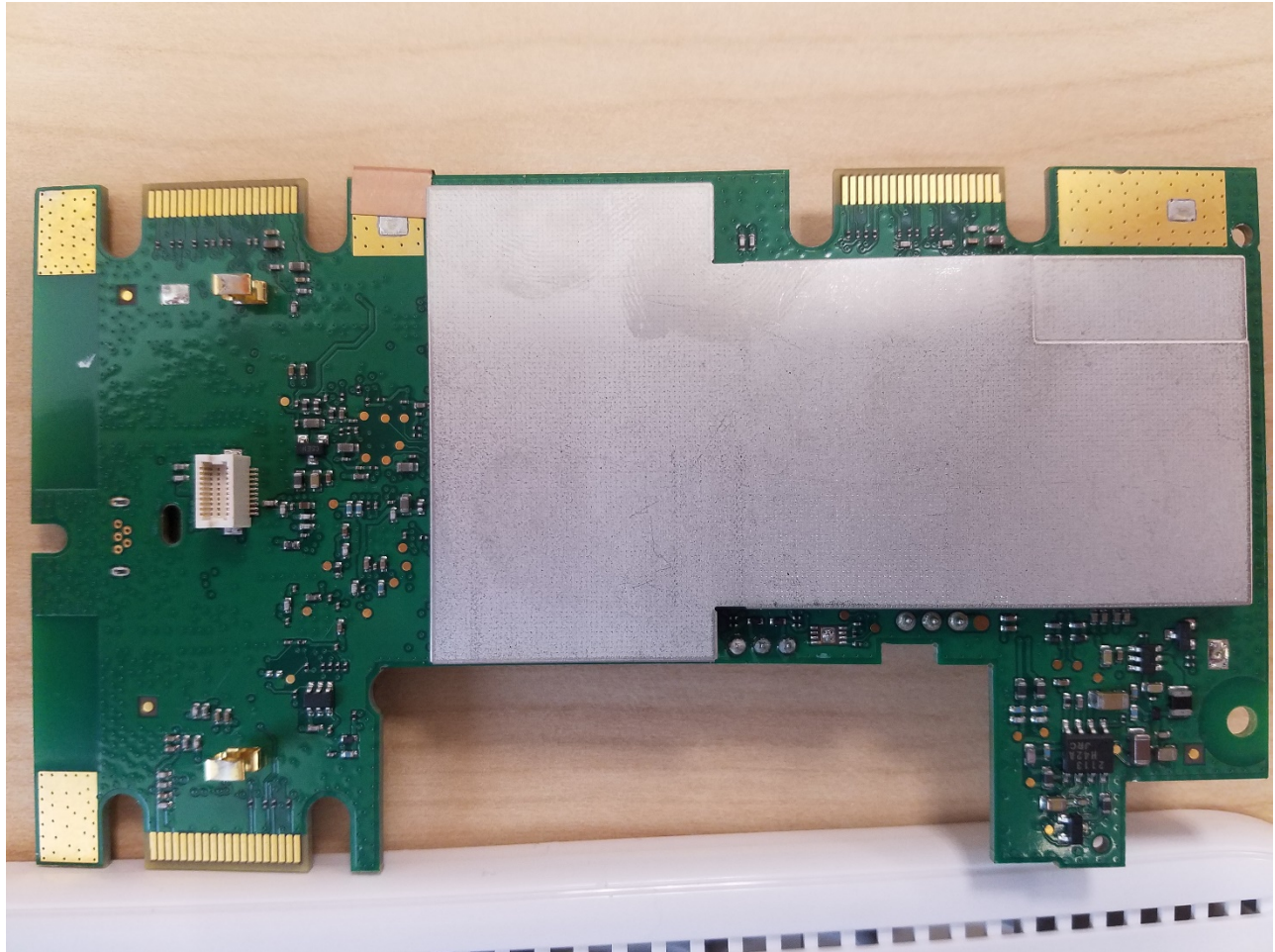
Wiselink Antenna Connection

Bluetooth Radio Module

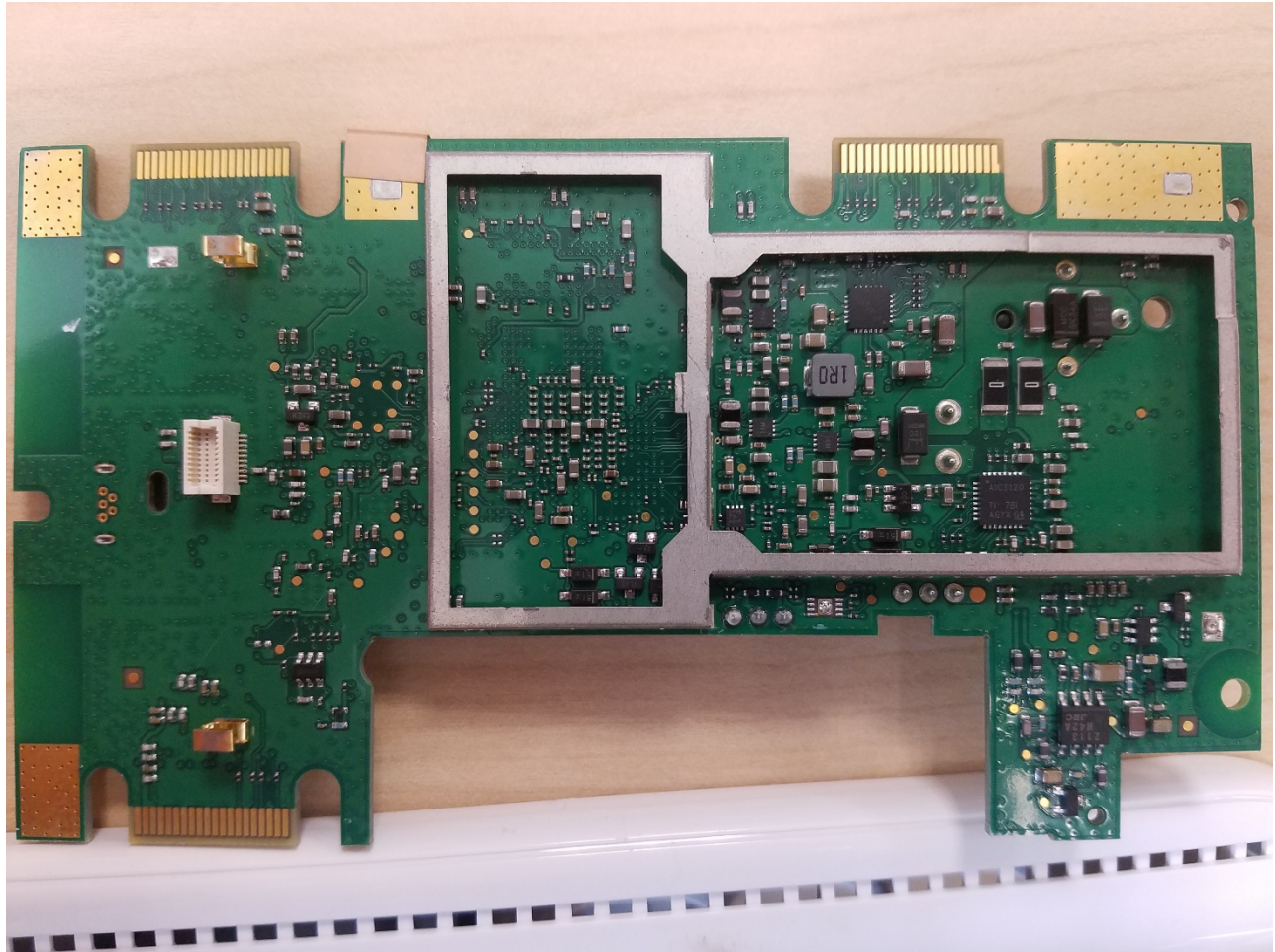
Wiselink Radio Module

RF6 Radio Module

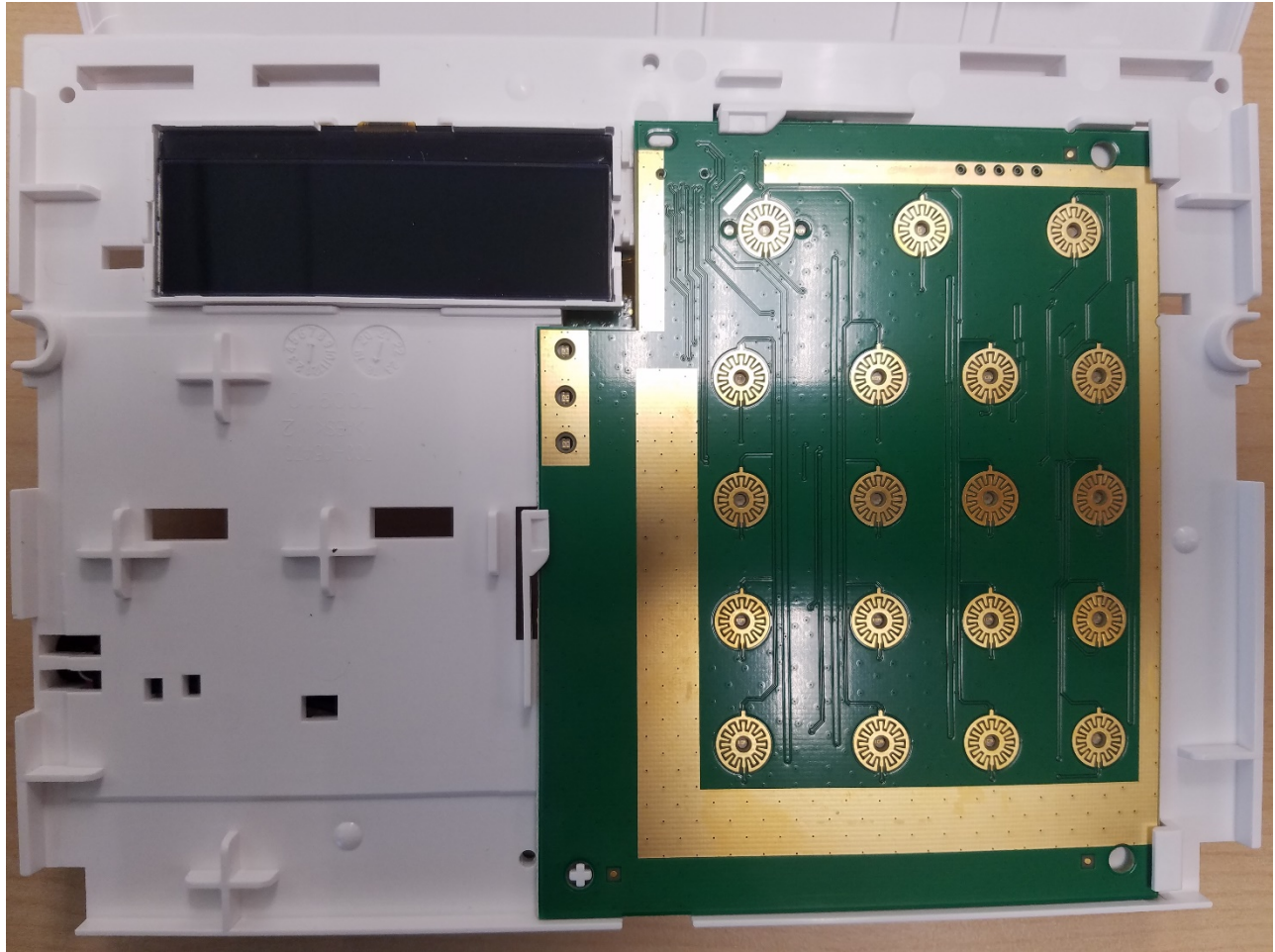
MAIN PCB BOTTOM – WITH SHIELD



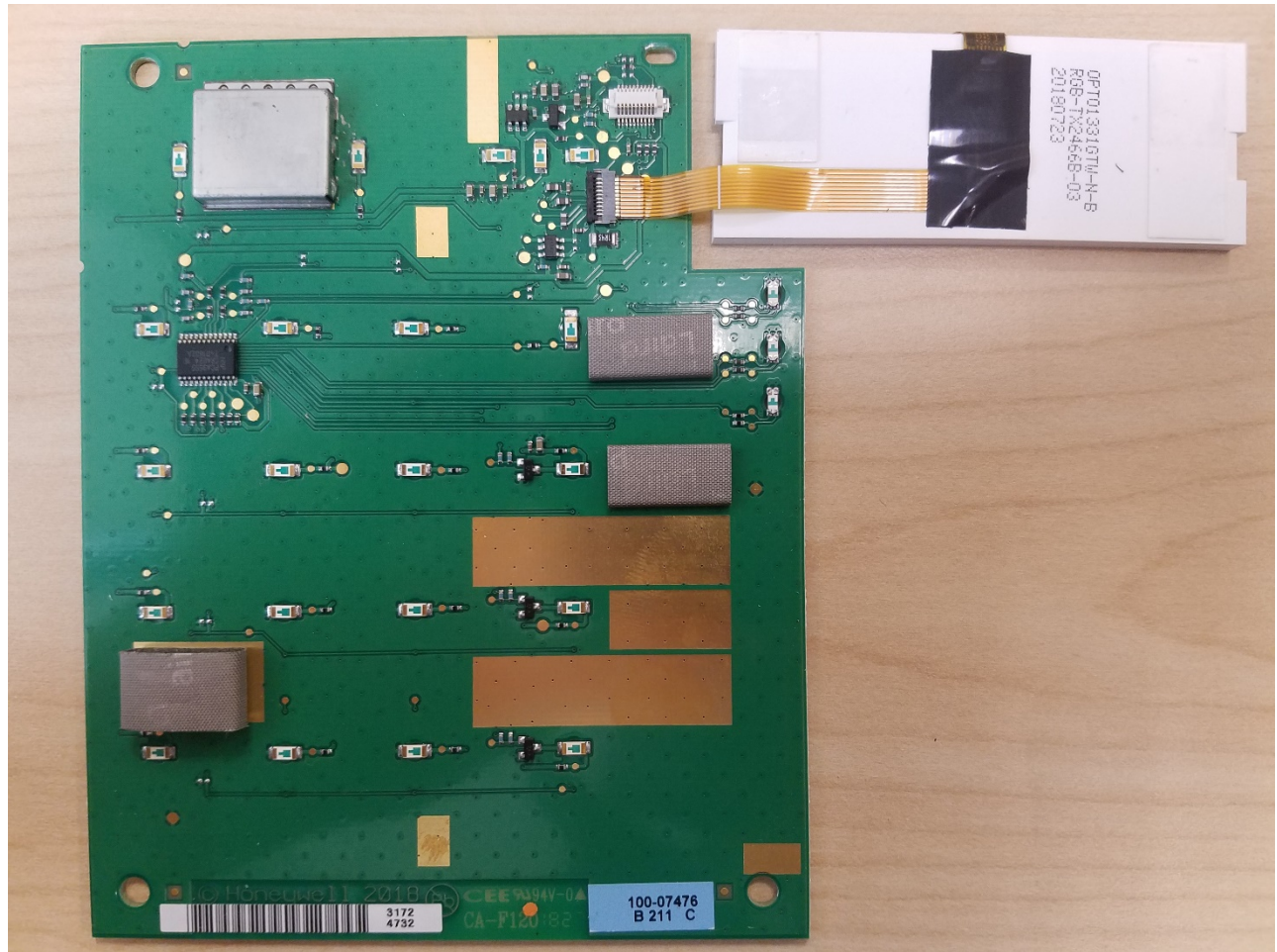
MAIN PCB BOTTOM – WITHOUT SHIELD



FRONT ENCLOSURE – KEYPAD PCB & LED DISPLAY, BOTTOM, INSTALLED



KEYPAD PCB & LED DISPLAY, TOP



FRONT ENCLOSURE – PCB's REMOVED



KEYPAD

