

**PHOTOGRAPHS OF THE INTERIOR OF A**

**BRAND NEDAP, MODEL LAMP DRIVER 4KW**

**TÜV Rheinland Nederland B.V.**  
Eiberkamp 10  
9351VT Leek  
The Netherlands

Telephone: +31888887888

Internet: [www.tuv.com/nl](http://www.tuv.com/nl)  
E-mail: [products@nl.tuv.com](mailto:products@nl.tuv.com)

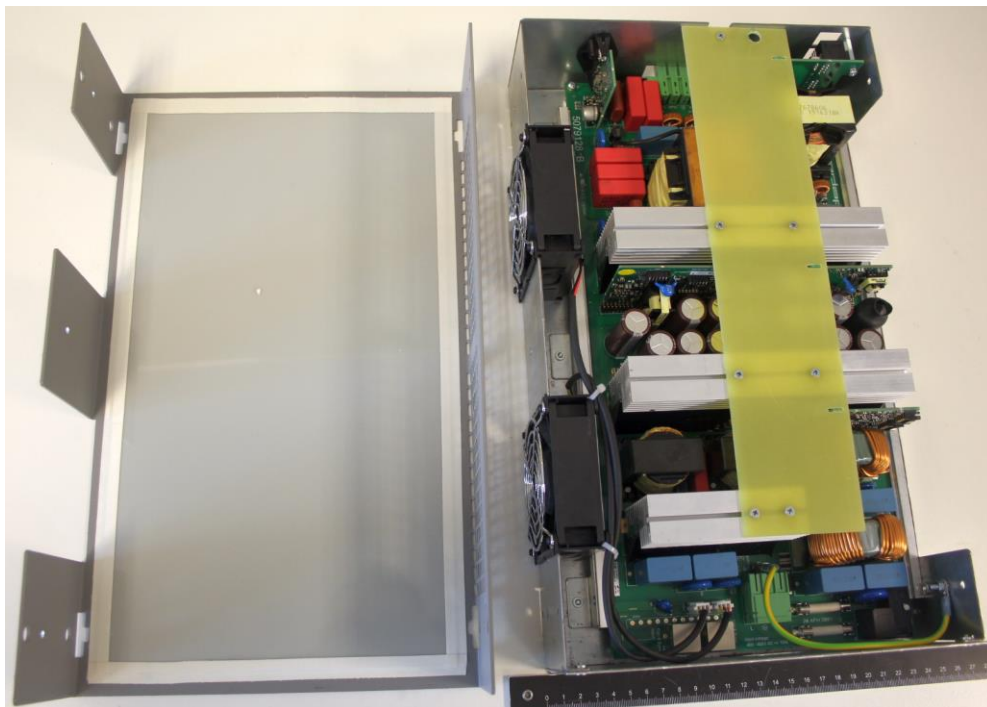
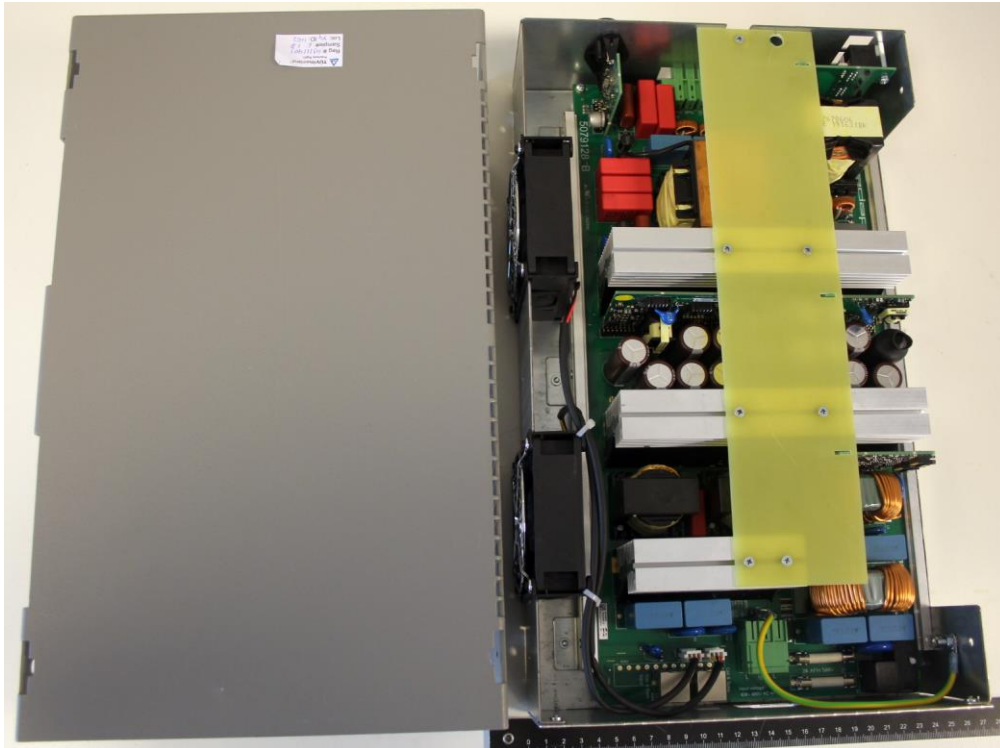


## **Table of contents**

1.1	INTERNAL VIEW 1, TOP COVER REMOVED.....	3
1.2	INTERNAL VIEW 2, PCB ASSEMBLY AS INSTALLED IN THE UNIT .....	4
	.....	4
1.3	INTERNAL VIEW 2, PCB MAIN BOARD .....	5
<b>2</b>	<b>INNER ASSEMBLY, PCB VIEW .....</b>	<b>6</b>
2.1	MAIN PCB VIEW, COMPONENT SIDE .....	6
2.2	RF PCB VIEW, BACK SIDE .....	7
2.3	PCB VIEW – ANTENNA DETAIL .....	8

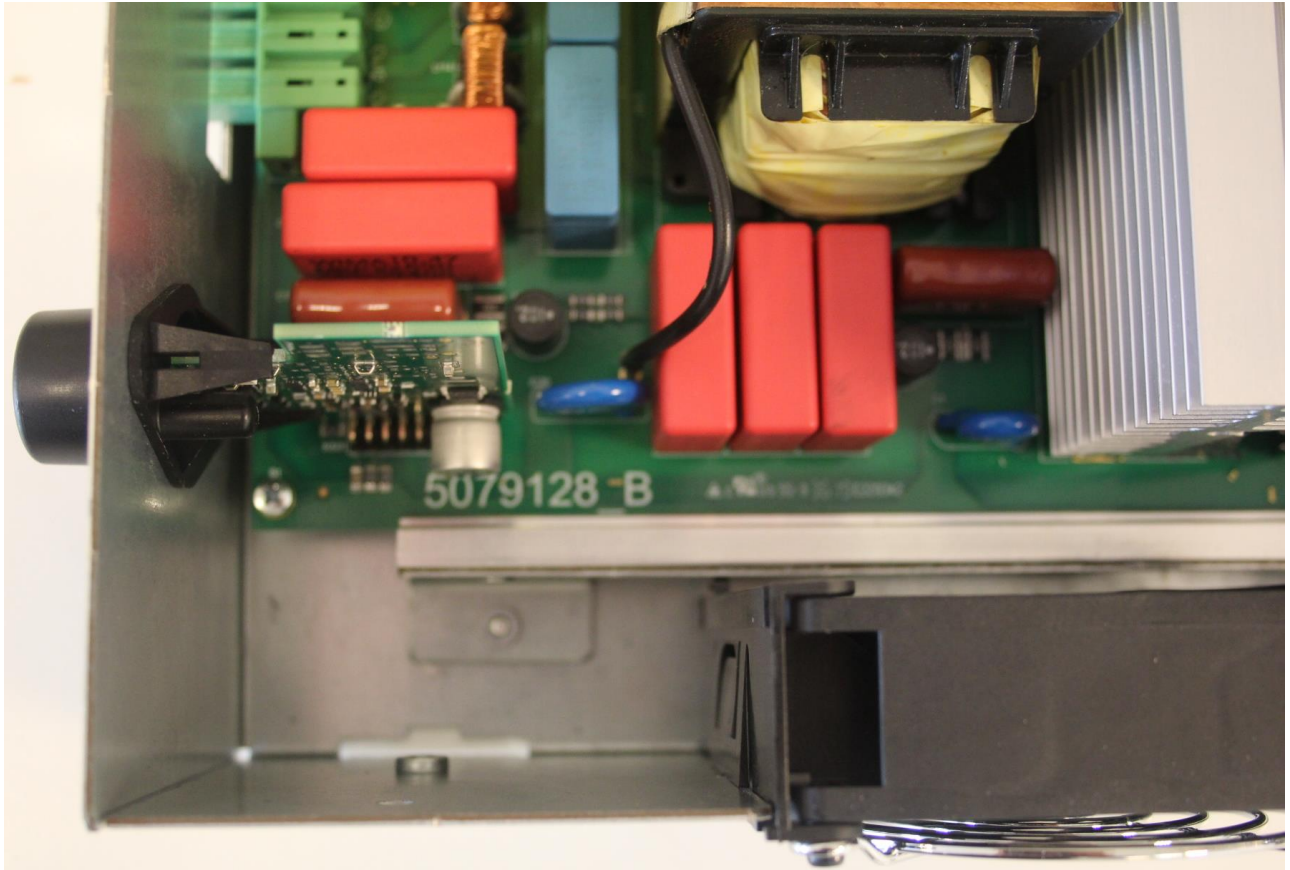


**1.1 Internal view 1, top cover removed.**



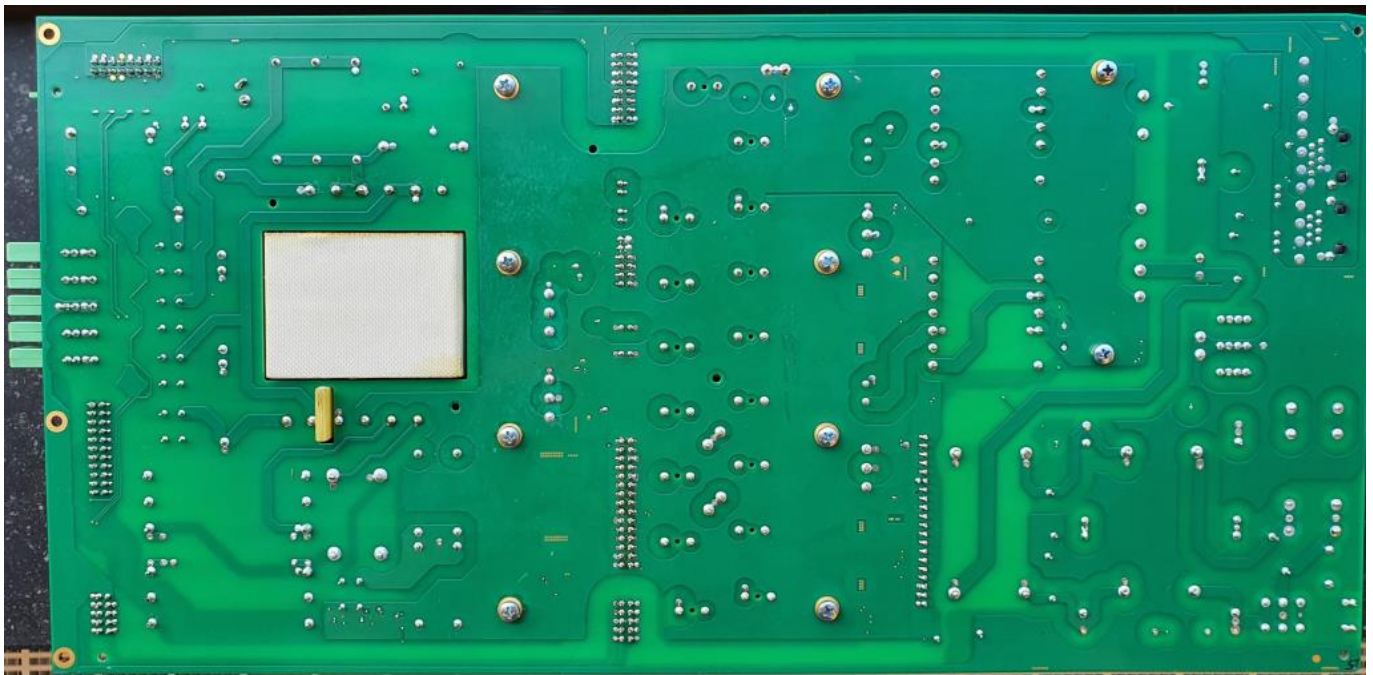
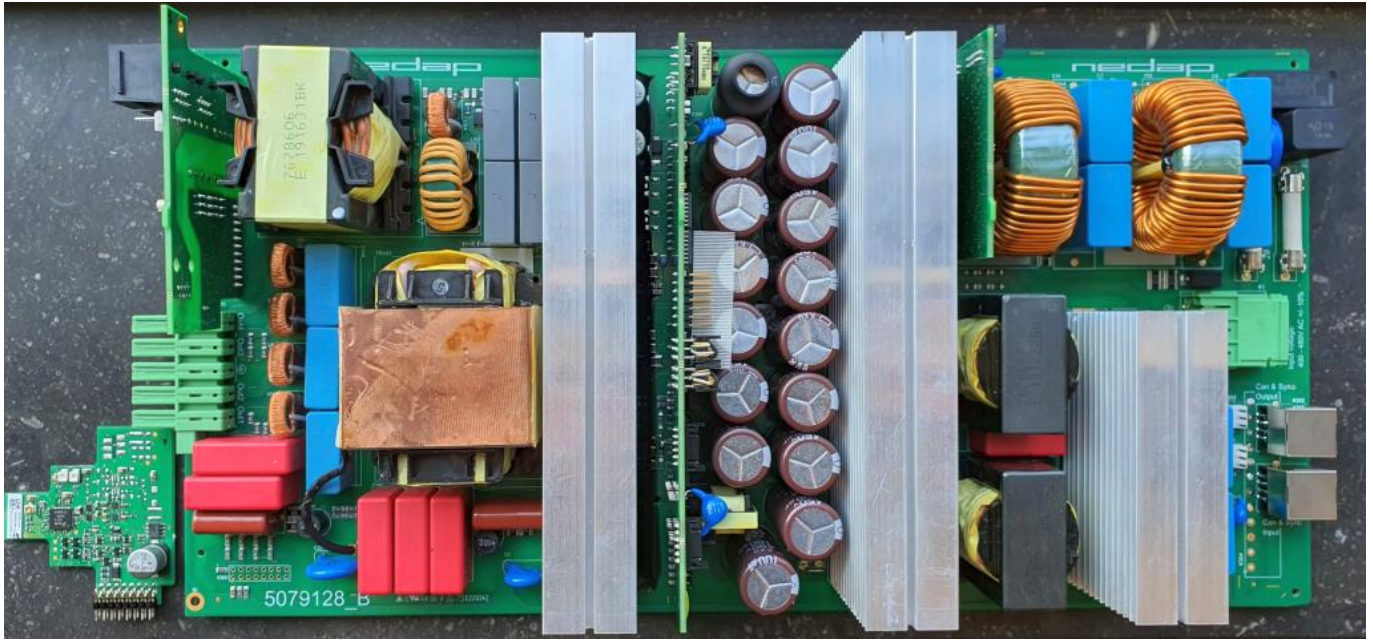


**1.2 Internal view 2, PCB assembly as installed in the unit**





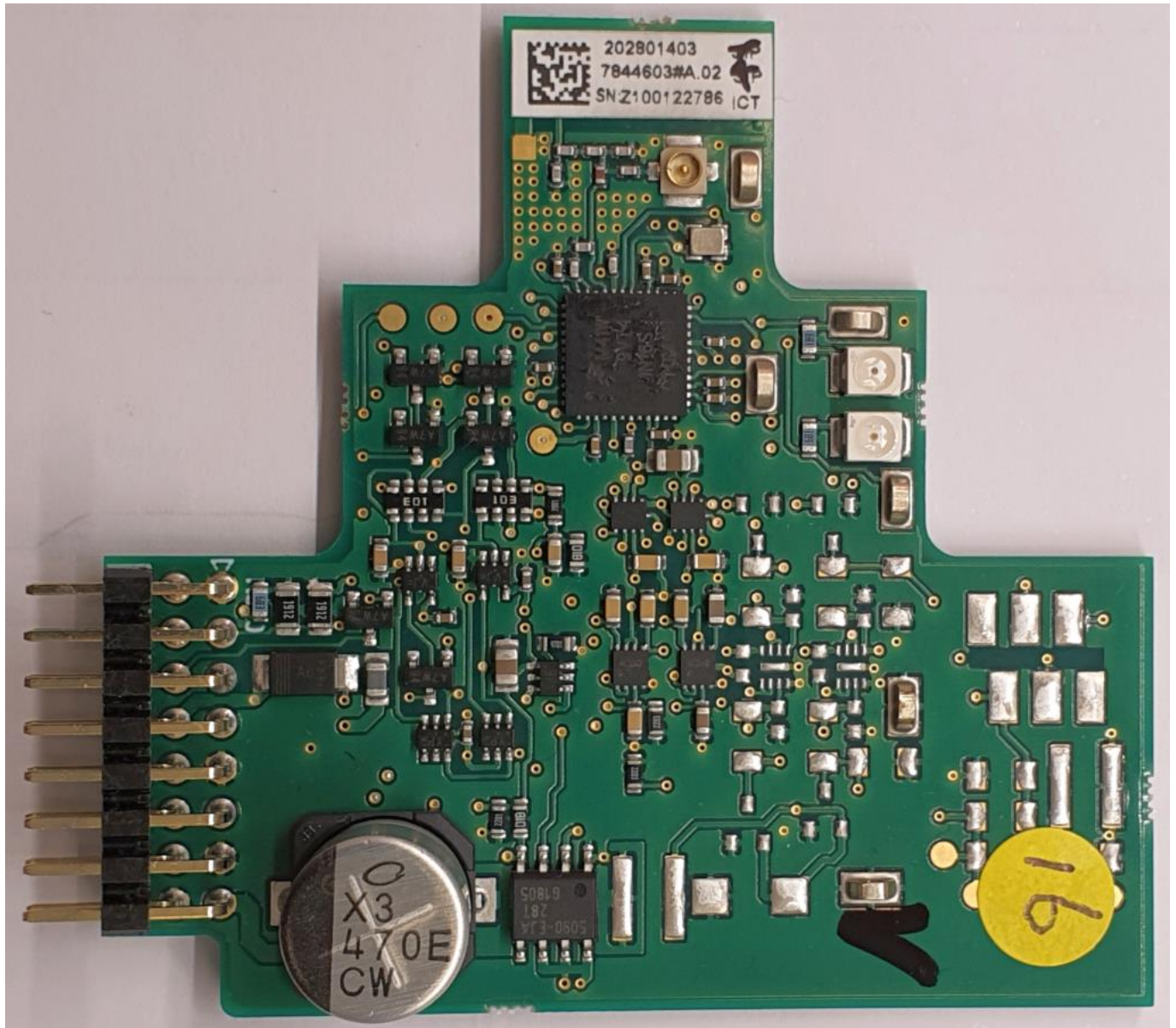
### 1.3 Internal view 2, PCB Main board





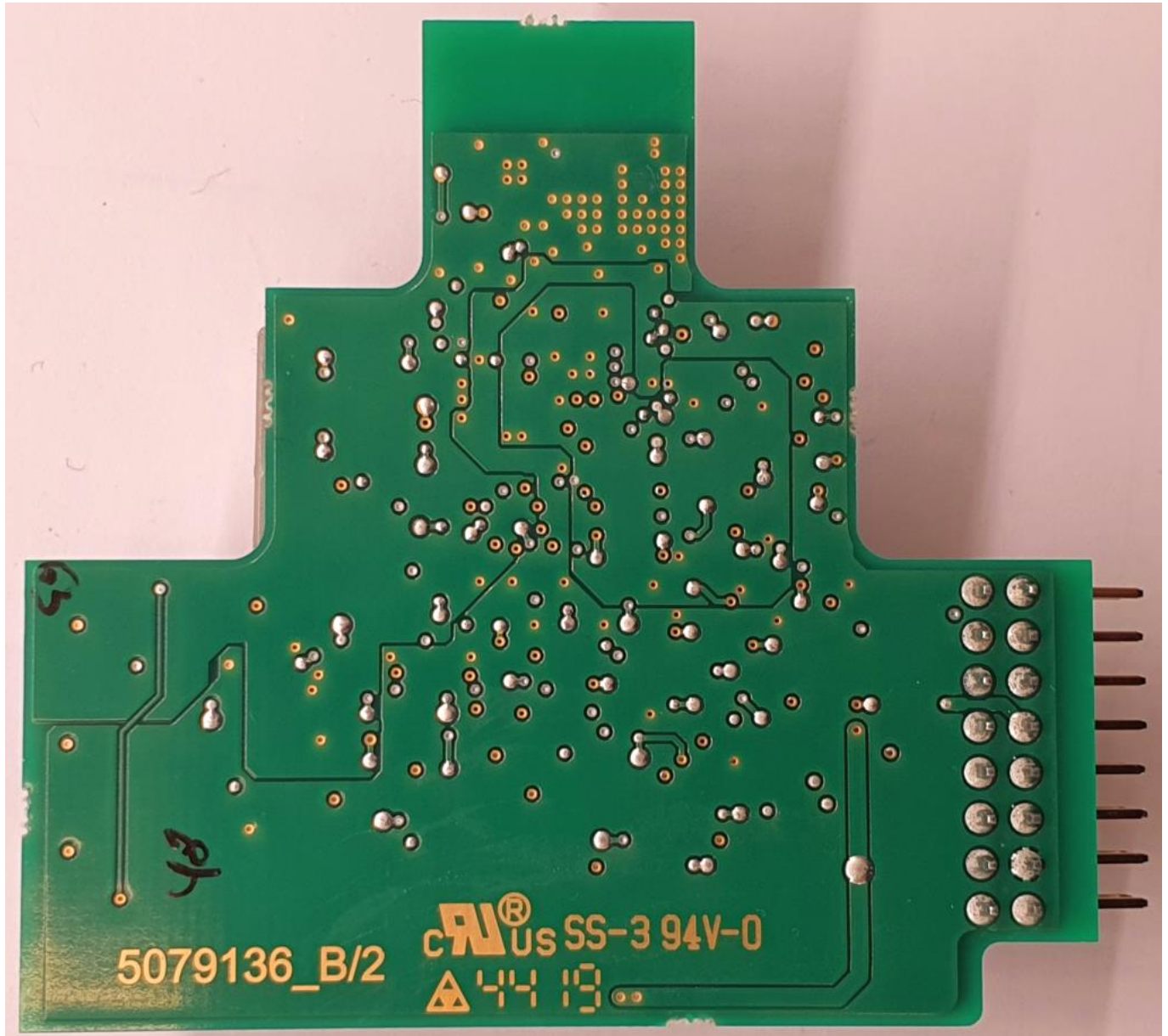
## 2 Inner assembly, PCB view

### 2.1 Main PCB view, component side.



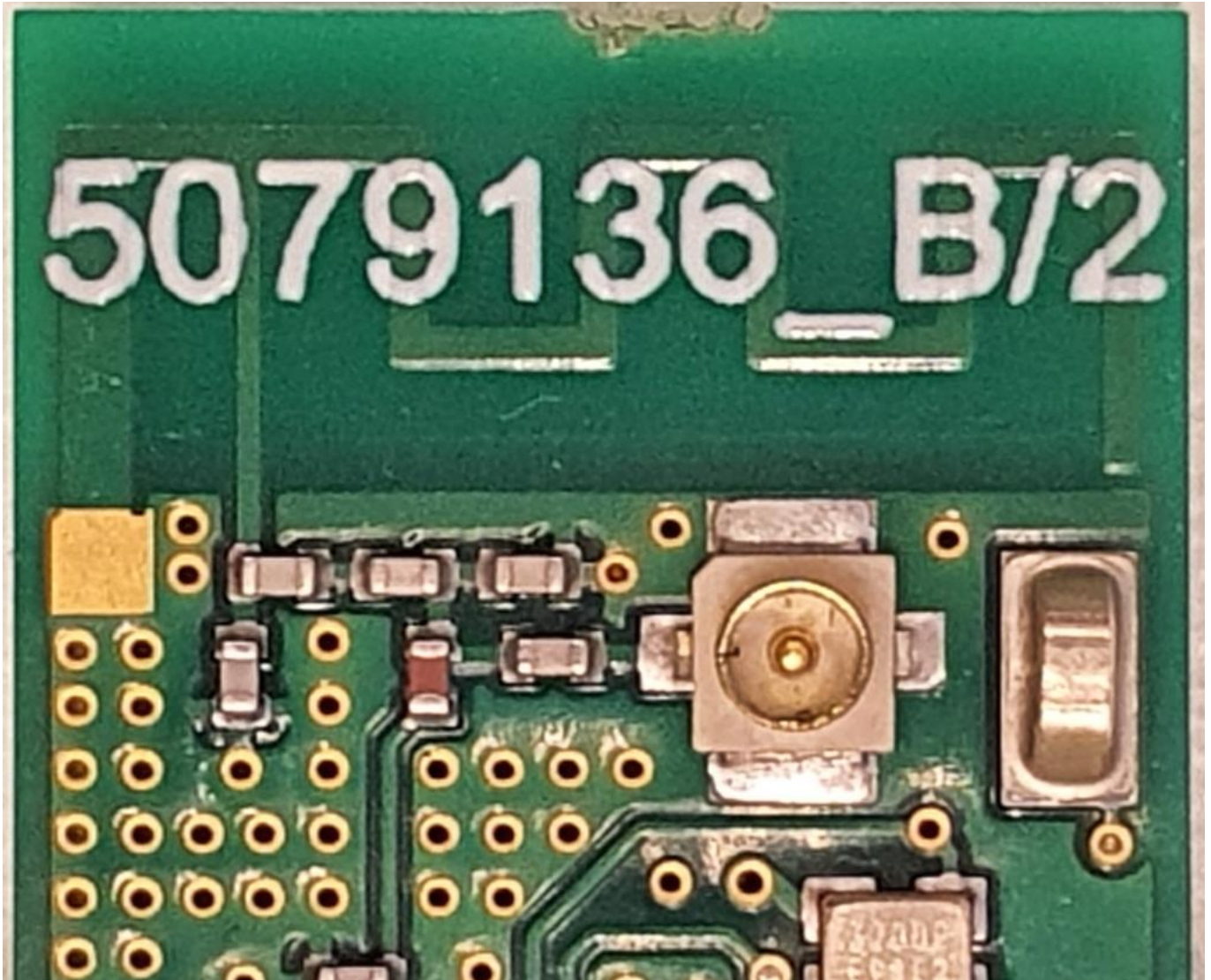


## 2.2 RF PCB view, back side





### 2.3 PCB view – Antenna detail



END OF REPORT