

EXHIBIT E

Paragraph 2.983 (d)(7)

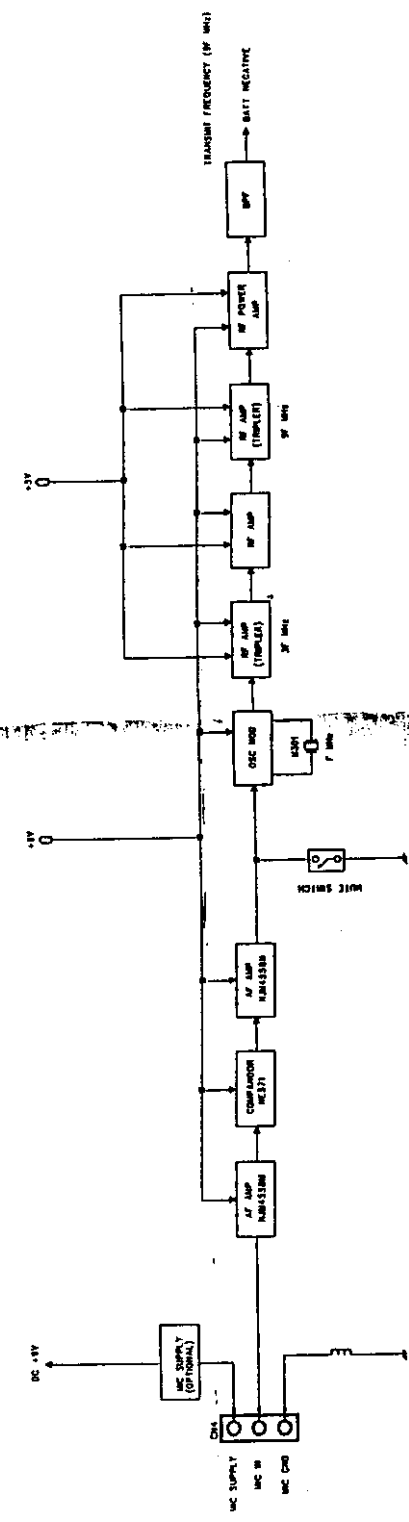
Circuit Diagrams



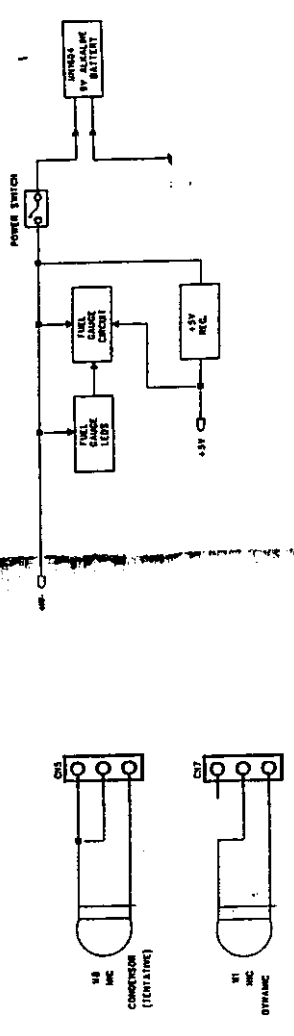
Retlif Testing Laboratories

Test Report Number R-7515-1
FCC ID: CCRVH3

NOV. 04.07.87	DESCRIPTION	BY	CHKD.	APPD.
2.07.88	Provisional Control	RAJESH	RAJESH	SAJJAY
	PROVISIONAL RELEASE	RAJESH	RAJESH	SAJJAY



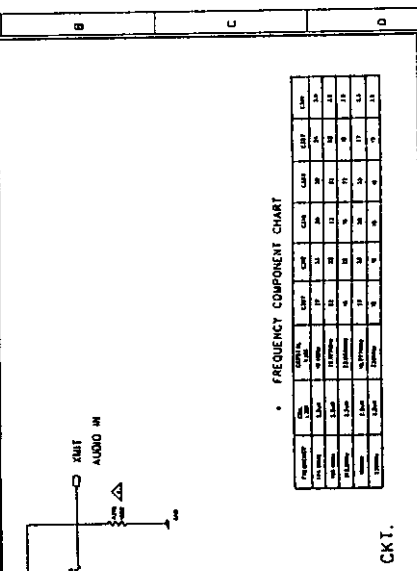
CHANNEL NO.	CENTRAL TRANSMIT FREQUENCY (OF MHz)	2F (OF MHz)	TRANSMIT FREQUENCY (OF MHz)
1	18.7778	37.5556	75.1112
2	18.8000	37.6000	75.2000
3	18.8222	37.6444	75.2888
4	18.8444	37.6888	75.3776
5	18.8666	37.7332	75.4664
6	18.8888	37.7776	75.5552
7	18.9111	37.8222	75.6444
8	18.9333	37.8666	75.7332
9	18.9555	37.9112	75.8224
10	18.9778	37.9556	75.9112



DWN	RAJESH	04.07.87	MODEL : SAMSON	PRODUCT CODE :
CHKD			TITLE : BLOCK DIAGRAM OF SAMSON HANDHELD	FILE NAME : SAMTBLSCH
APPD			SINGAPORE	PAGE
			PART NO.	REV.
			OFFICIAL	1 / 2
			PART NO.	0

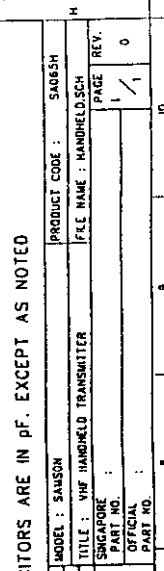
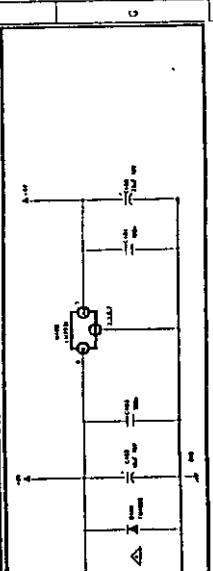
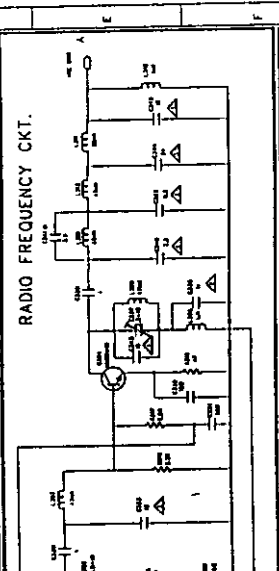
GPE Industries Limited

NOV.	DATE	DESCRIPTION	BY	CHKD.	APPRO.
	10.09.97	PROVISIONAL RELEASE	RAJESH LEW MALANI		
	04.11.97	PERFORMANCE IMPROVEMENT	RAJESH LEW MALANI		
	04.11.97	PERFORMANCE IMPROVEMENT	RAJESH LEW MALANI		
	04.11.97	PERFORMANCE IMPROVEMENT	RAJESH LEW MALANI		
	07.01.98	PERFORMANCE IMPROVEMENT	RAJESH LEW MALANI		
	30	PERFORMANCE IMPROVEMENT	RAJESH LEW MALANI		



FREQUENCY COMPONENT CHART

FREQUENCY	100 Hz	200 Hz	300 Hz	400 Hz	500 Hz	600 Hz	700 Hz	800 Hz	900 Hz	1000 Hz	1100 Hz	1200 Hz	1300 Hz	1400 Hz	1500 Hz
100 Hz	10	10	10	10	10	10	10	10	10	10	10	10	10	10	10
200 Hz	10	10	10	10	10	10	10	10	10	10	10	10	10	10	10
300 Hz	10	10	10	10	10	10	10	10	10	10	10	10	10	10	10
400 Hz	10	10	10	10	10	10	10	10	10	10	10	10	10	10	10
500 Hz	10	10	10	10	10	10	10	10	10	10	10	10	10	10	10
600 Hz	10	10	10	10	10	10	10	10	10	10	10	10	10	10	10
700 Hz	10	10	10	10	10	10	10	10	10	10	10	10	10	10	10
800 Hz	10	10	10	10	10	10	10	10	10	10	10	10	10	10	10
900 Hz	10	10	10	10	10	10	10	10	10	10	10	10	10	10	10
1000 Hz	10	10	10	10	10	10	10	10	10	10	10	10	10	10	10
1100 Hz	10	10	10	10	10	10	10	10	10	10	10	10	10	10	10
1200 Hz	10	10	10	10	10	10	10	10	10	10	10	10	10	10	10
1300 Hz	10	10	10	10	10	10	10	10	10	10	10	10	10	10	10
1400 Hz	10	10	10	10	10	10	10	10	10	10	10	10	10	10	10
1500 Hz	10	10	10	10	10	10	10	10	10	10	10	10	10	10	10



ALL CAPACITORS ARE IN pF. EXCEPT AS NOTED

OWN	CHKD	CHKD	APPRO	MODEL	PRODUCT CODE
RAJESH	10.09.97	RAJESH	SAHSON		SA03SH
LEW	10.09.97	LEW			
MALANI	10.09.97	MALANI			

TITLE : VHF HANDHELD TRANSMITTER
 SINGAPORE
 PART NO. :
 OFFICIAL PART NO. :

CE Industries Limited

ALL COMPONENT VALUES ARE TENTATIVE