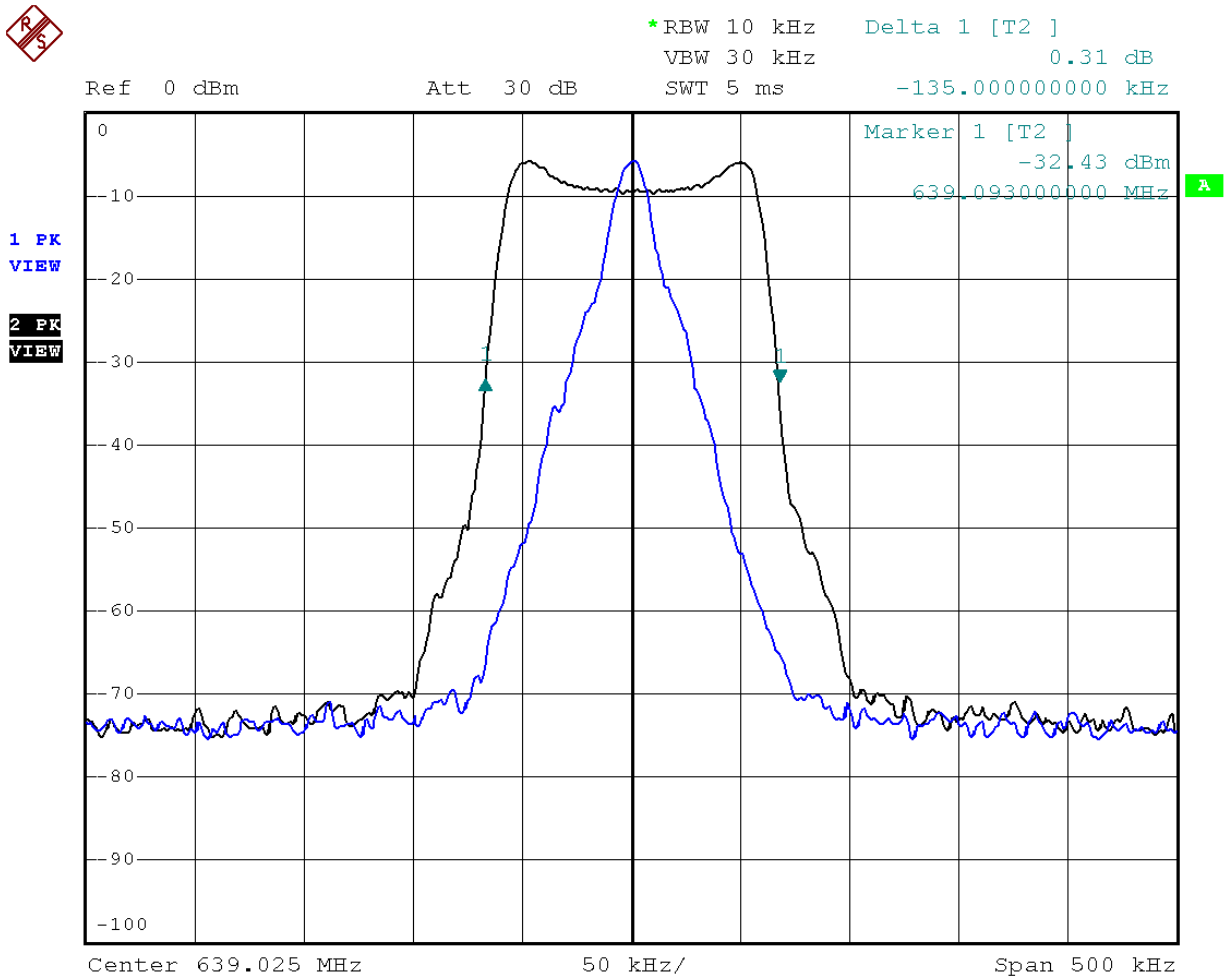


Occupied Bandwidth



Date: 19.AUG.2009 14:57:03

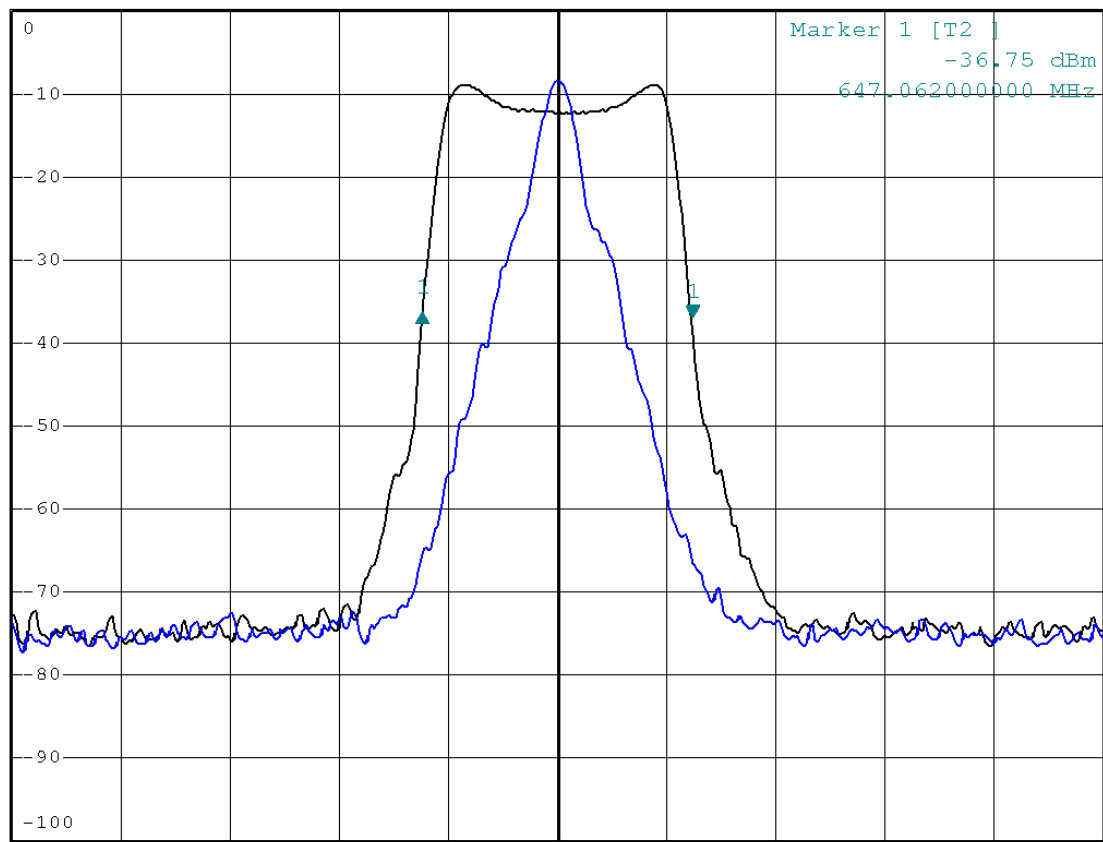
FCC ID: CCRAL300



Ref 0 dBm Att 30 dB *RBW 10 kHz Delta 1 [T2]
VBW 30 kHz 0.31 dB
SWT 5 ms -124.000000000 kHz

1 PK
VIEW

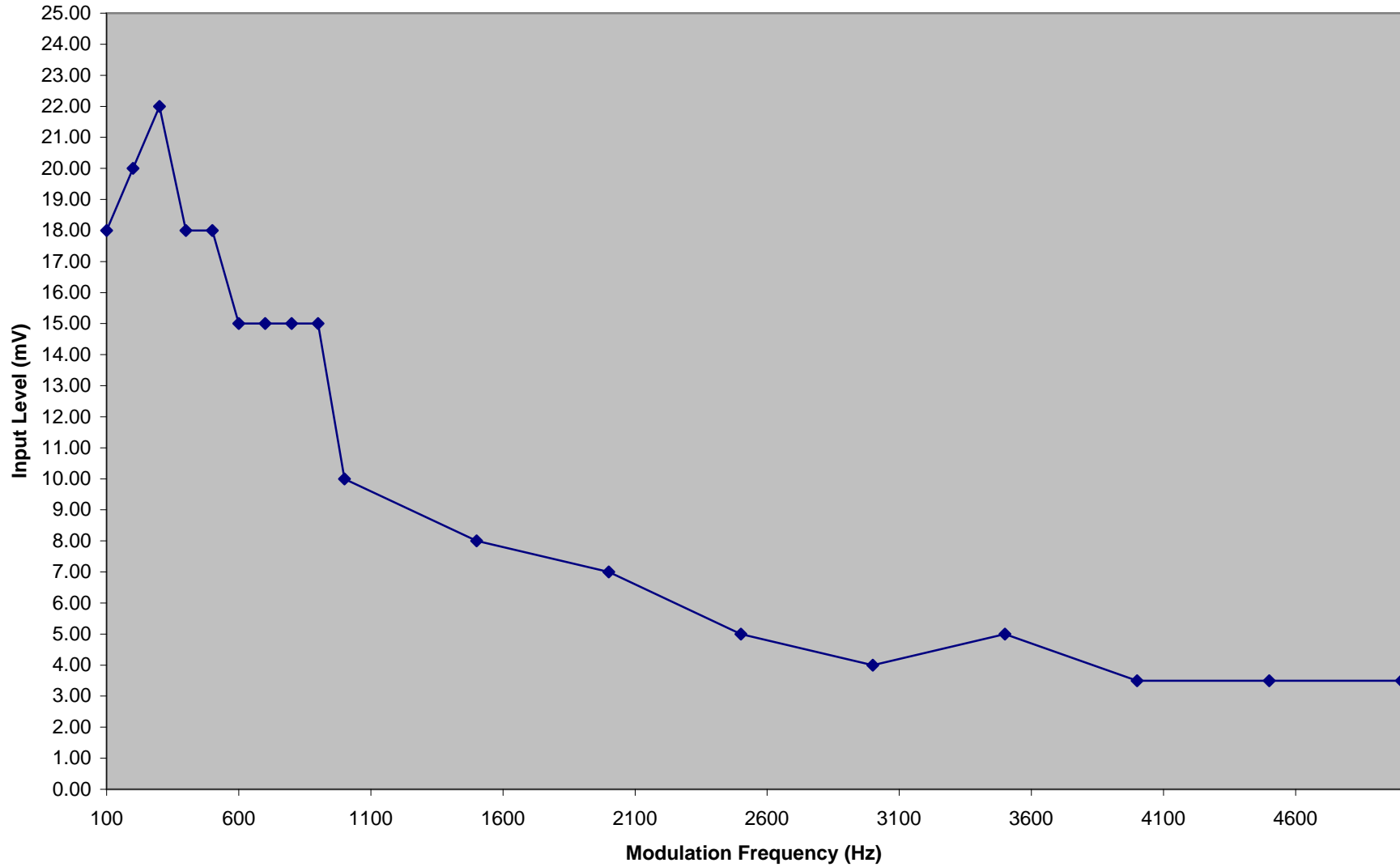
2 PK
VIEW



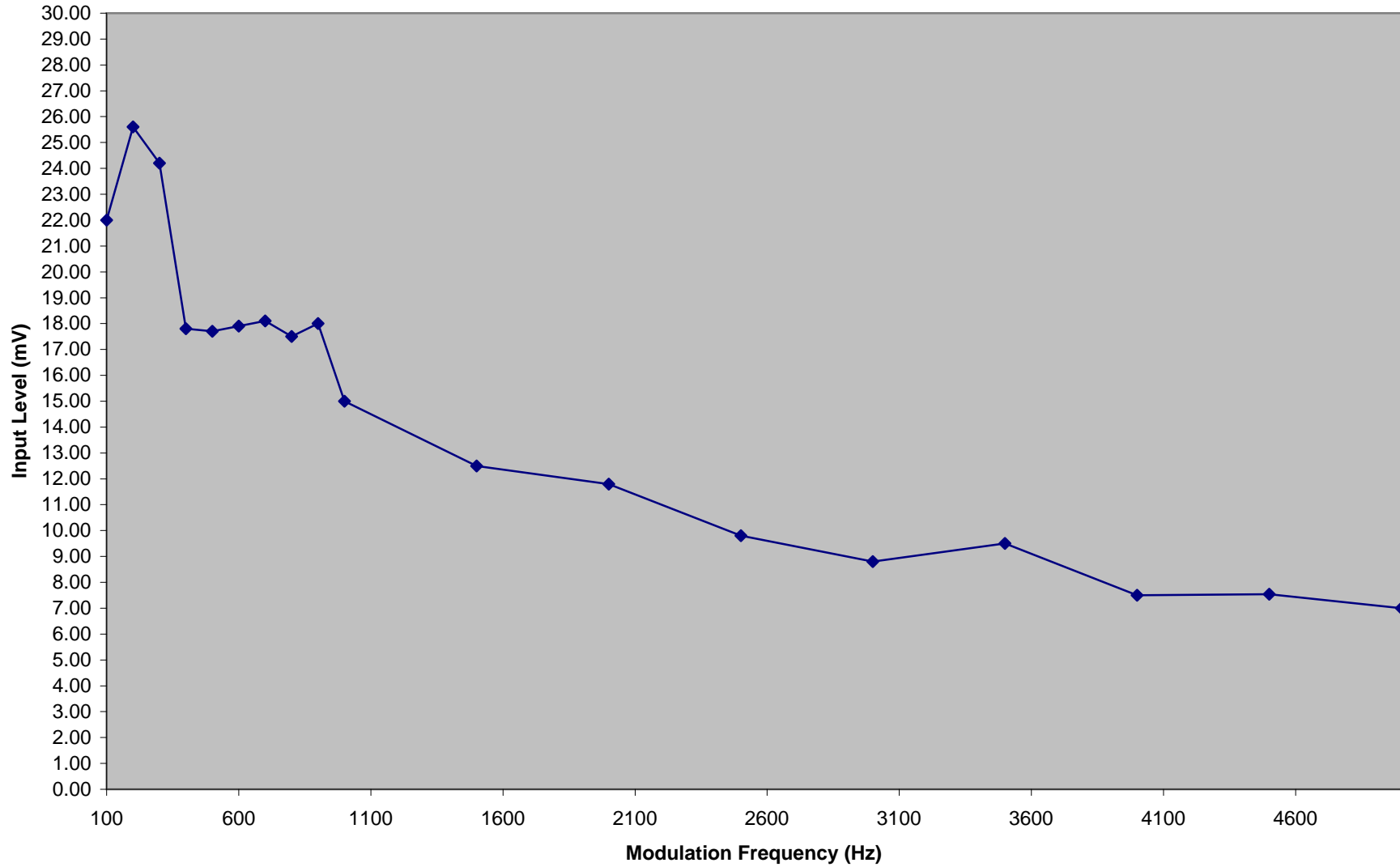
Center 647 MHz 50 kHz/ Span 500 kHz

Date: 19.AUG.2009 17:30:30

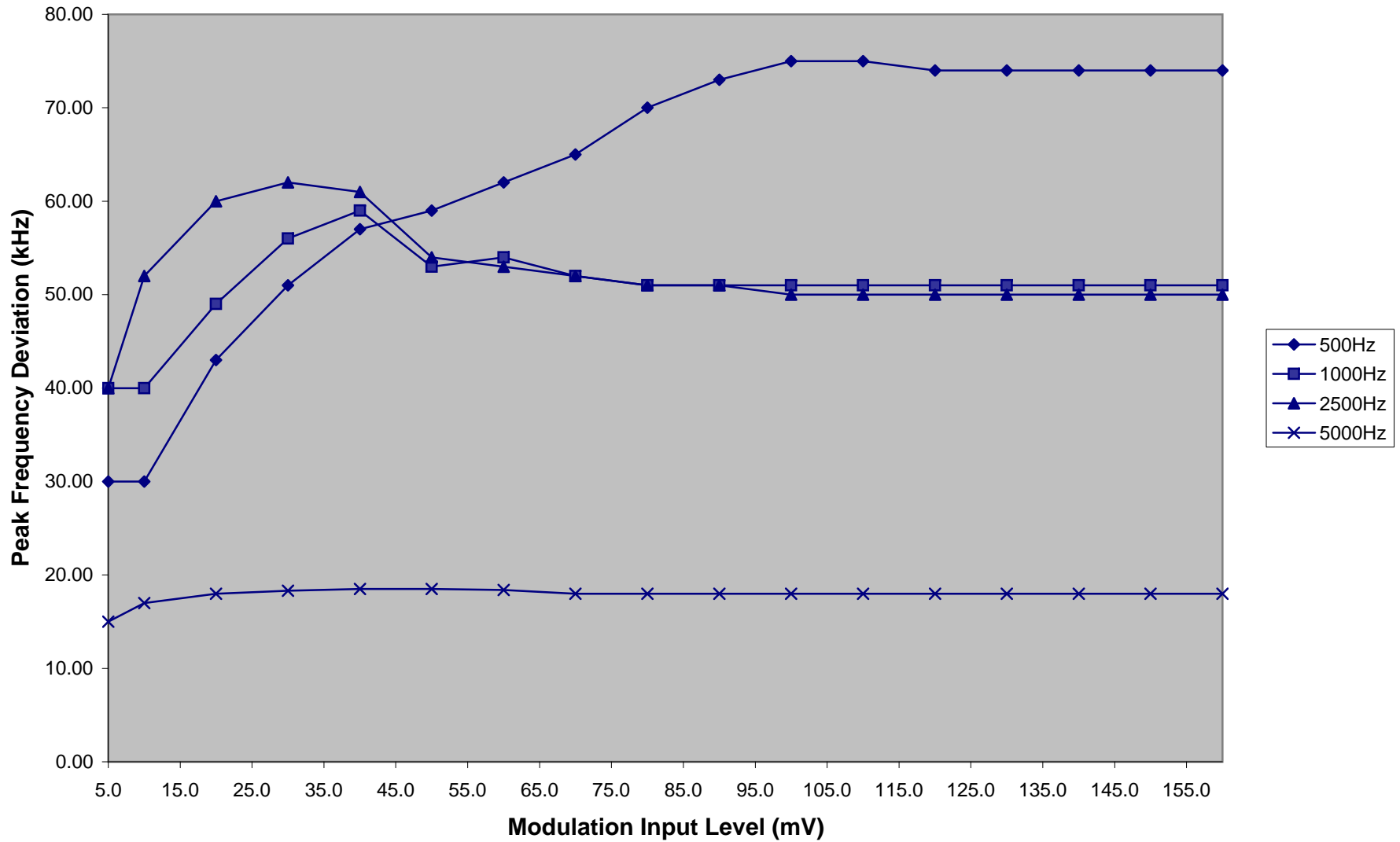
Audio Frequency Response (639.025MHz)



Audio Frequency Response (647.000MHz)



Modulation Limiting (639.025MHz)



Modulation Limiting (647.000MHz)

