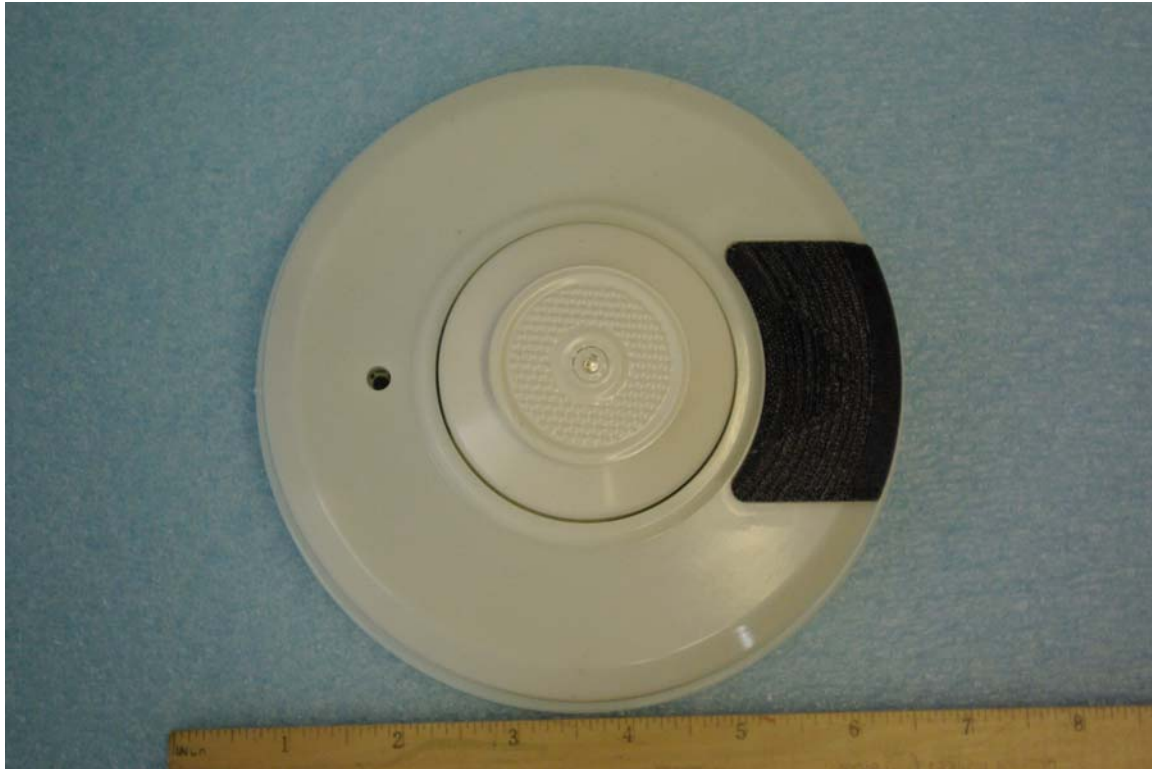


External photographs of equipment under test

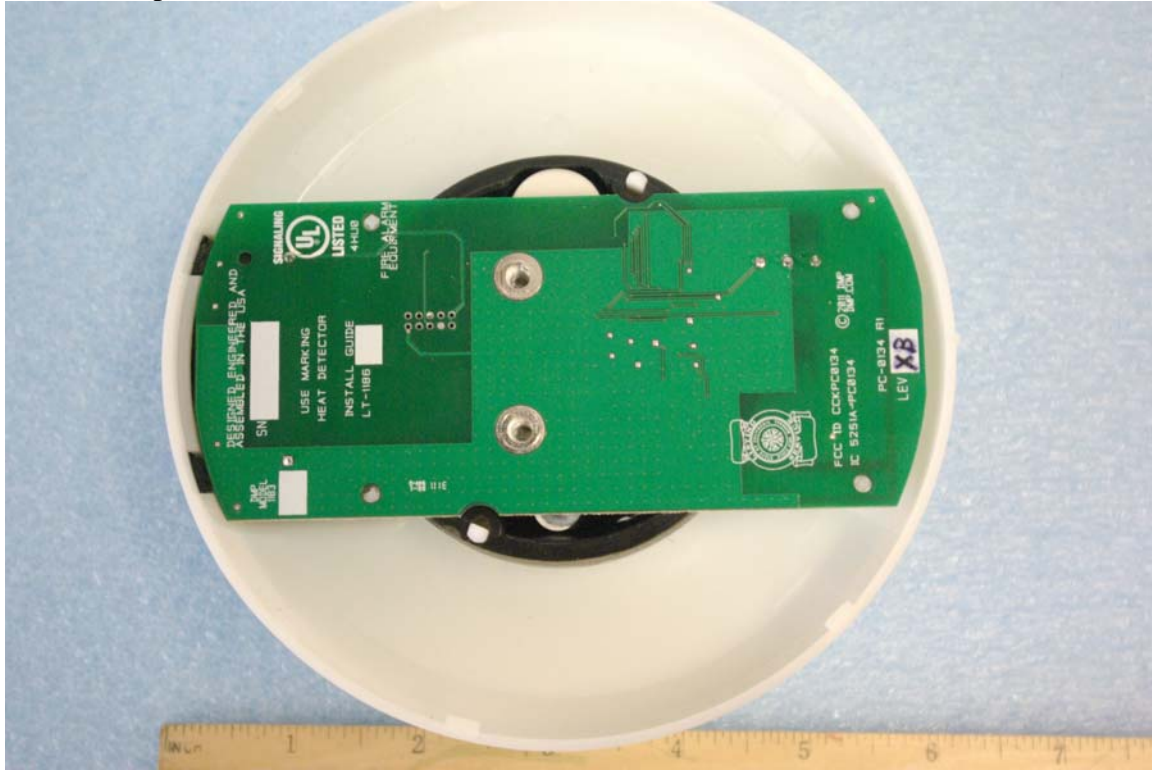


Rogers Labs, Inc.  
4405 West 259<sup>th</sup> Terrace  
Louisburg, KS 66053  
Phone/Fax: (913) 837-3214  
Revision 1

Digital Monitoring Products, Inc.  
Model: 1183  
Test #: 110809      SN: 06400022  
Test to: FCC Parts 2 and 15.249, RSS-210  
File: ExtPho 1183

FCC ID#: CCKPC0134  
IC: 5251A-PC0134  
Date: September 2, 2011  
Page 1 of 2

Back cover plate removed



Rogers Labs, Inc.  
4405 West 259<sup>th</sup> Terrace  
Louisburg, KS 66053  
Phone/Fax: (913) 837-3214  
Revision 1

Digital Monitoring Products, Inc.  
Model: 1183  
Test #: 110809                      SN: 06400022  
Test to: FCC Parts 2 and 15.249, RSS-210  
File: ExtPho 1183

FCC ID#: CCKPC134  
IC: 5251A-PC0134  
Date: September 2, 2011  
Page 2 of 2