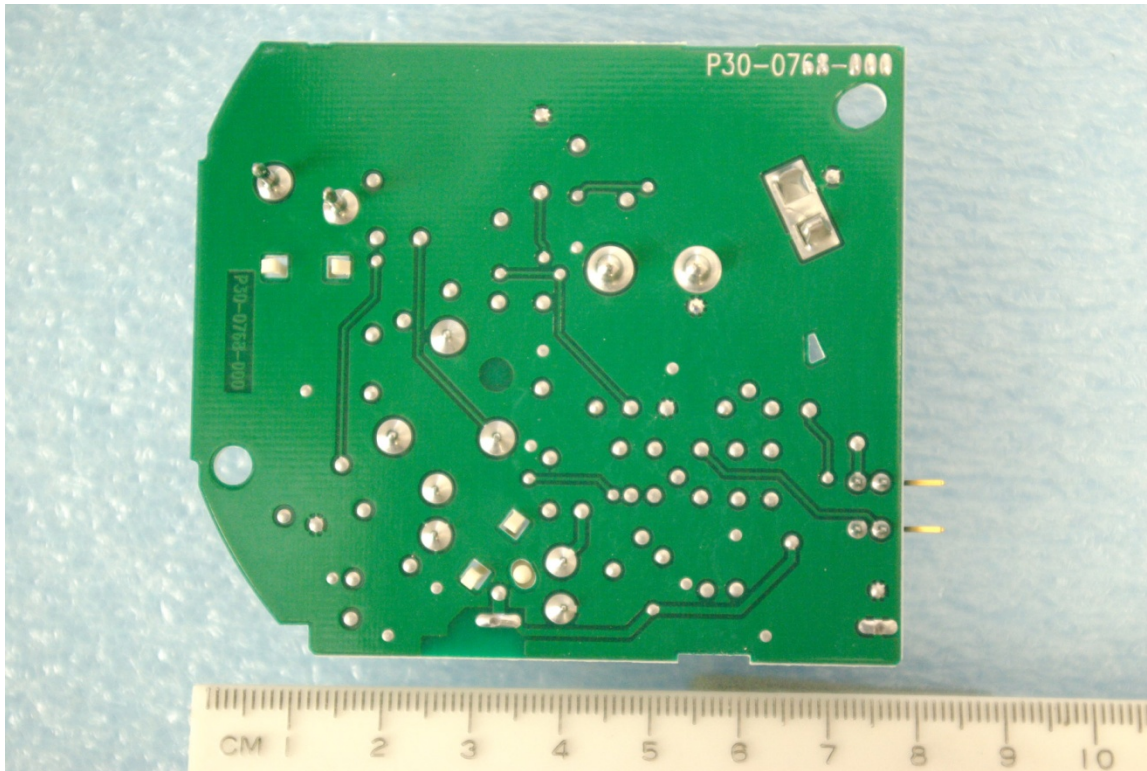
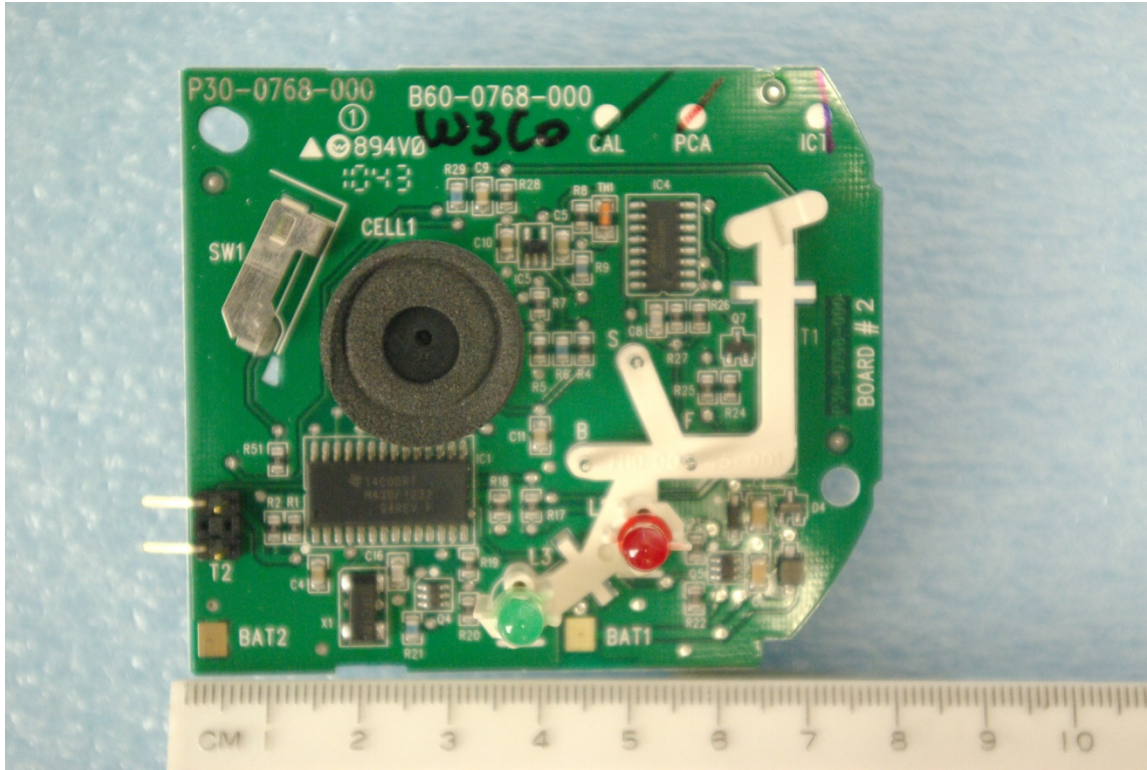


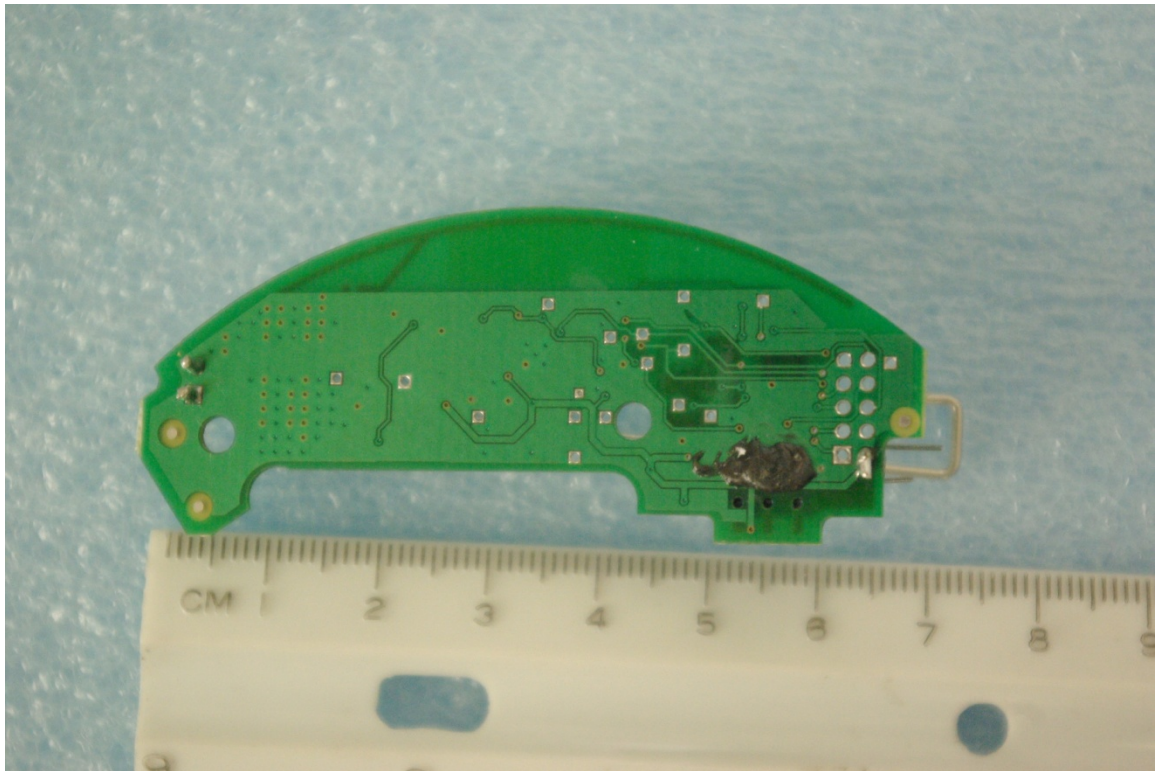
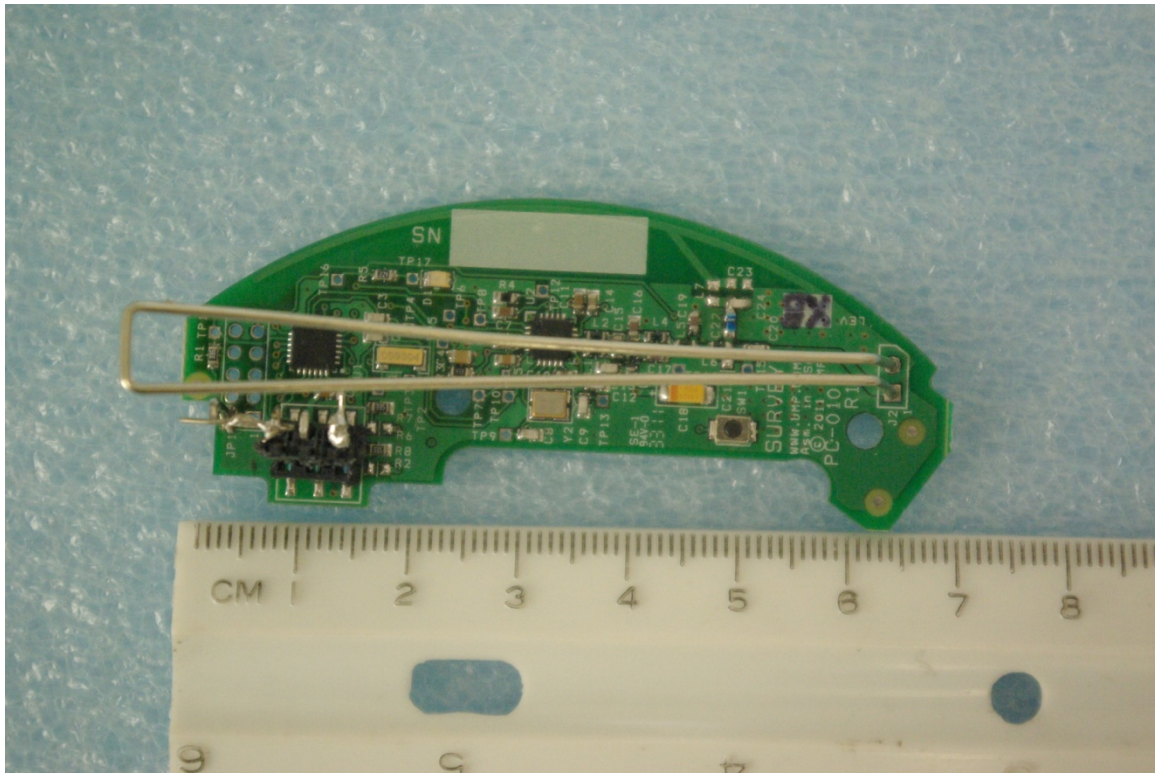
Internal Photographs



Rogers Labs, Inc.
4405 West 259th Terrace
Louisburg, KS 66053
Phone/Fax: (913) 837-3214
Revision 1

Digital Monitoring Products, Inc.
Model: 1184 CO Detector
Test #:110914C SN: W30CO ENG1
Test to: FCC Parts 2 and 15.249, RSS-210
File: IntPho CCKPC0104

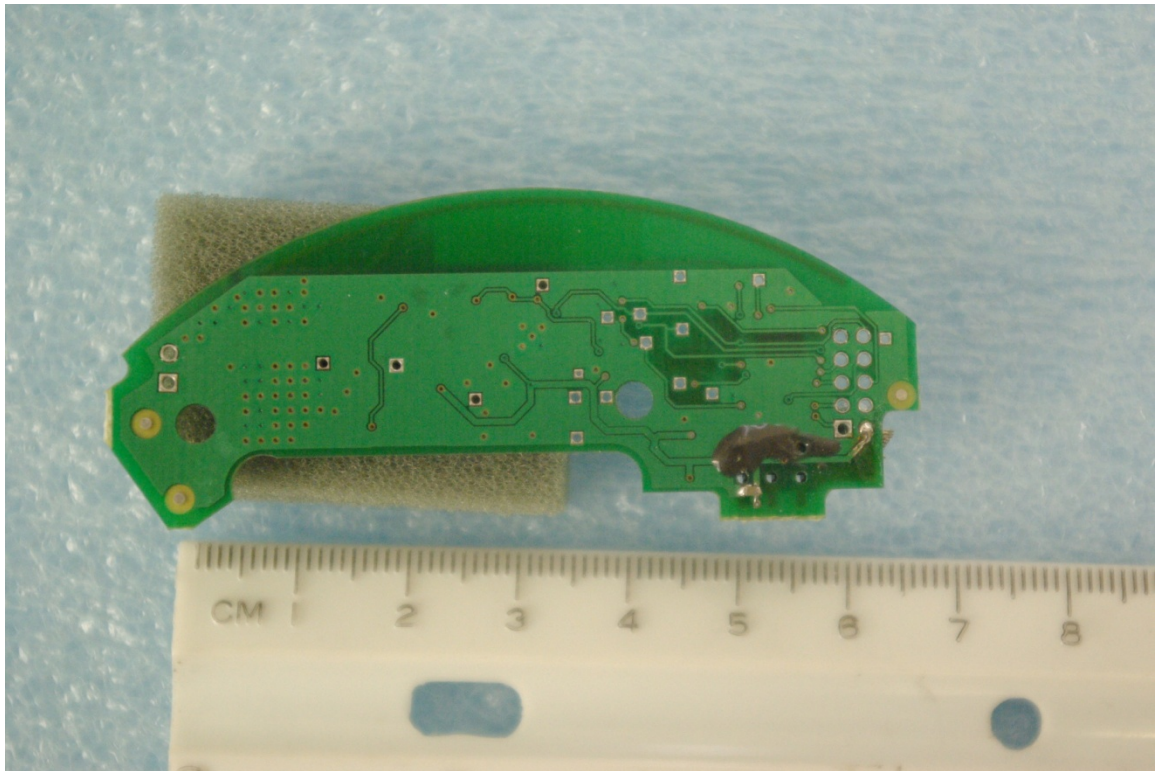
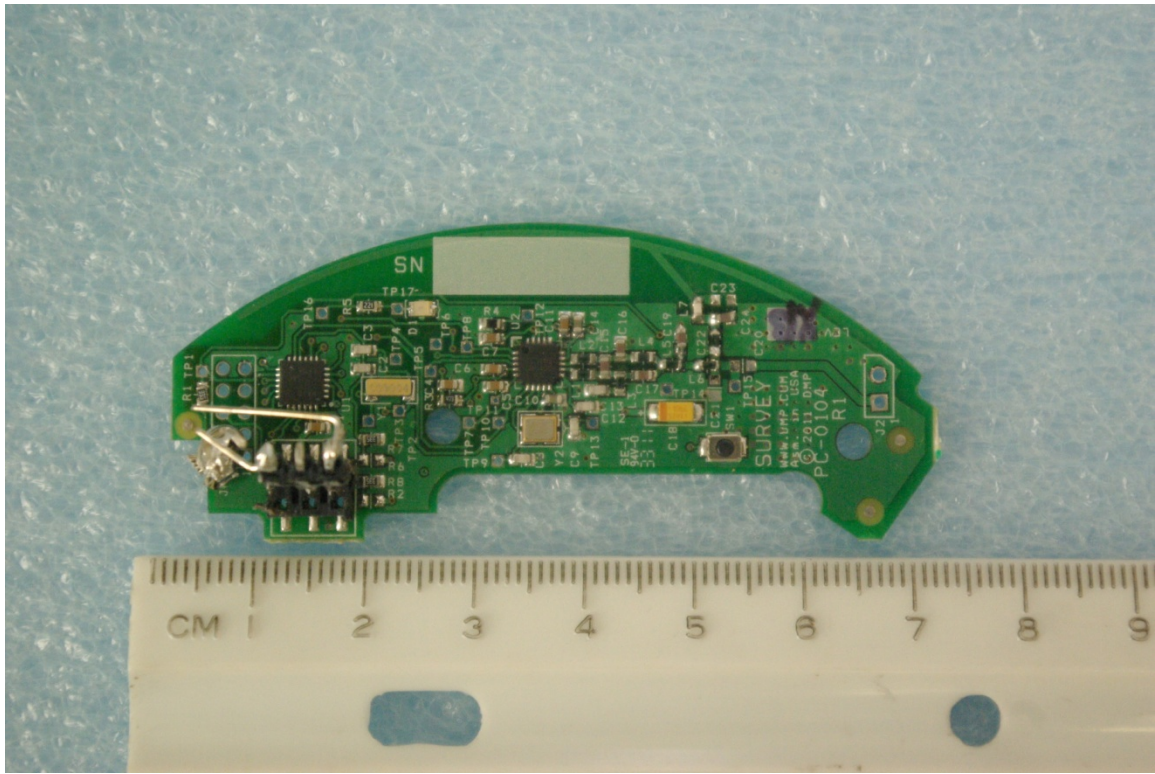
FCC ID#: CCKPC0104
IC: 5251A-PC0104
Date: October 3, 2011
Page 1 of 3



Rogers Labs, Inc.
4405 West 259th Terrace
Louisburg, KS 66053
Phone/Fax: (913) 837-3214
Revision 1

Digital Monitoring Products, Inc.
Model: 1184 CO Detector
Test #:110914C SN: W30CO ENG1
Test to: FCC Parts 2 and 15.249, RSS-210
File: IntPho CCKPC0104

FCC ID#: CCKPC0104
IC: 5251A-PC0104
Date: October 3, 2011
Page 2 of 3



Rogers Labs, Inc.
4405 West 259th Terrace
Louisburg, KS 66053
Phone/Fax: (913) 837-3214
Revision 1

Digital Monitoring Products, Inc.
Model: 1184 CO Detector
Test #:110914C SN: W30CO ENG1
Test to: FCC Parts 2 and 15.249, RSS-210
File: IntPho CCKPC0104

FCC ID#: CCKPC0104
IC: 5251A-PC0104
Date: October 3, 2011
Page 3 of 3