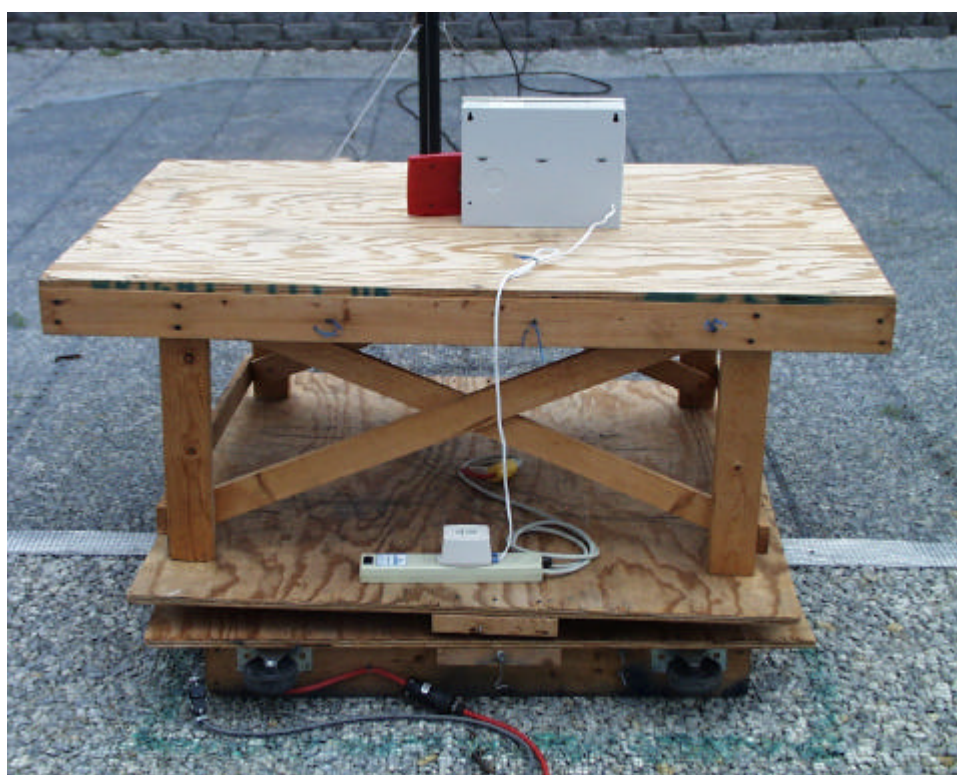
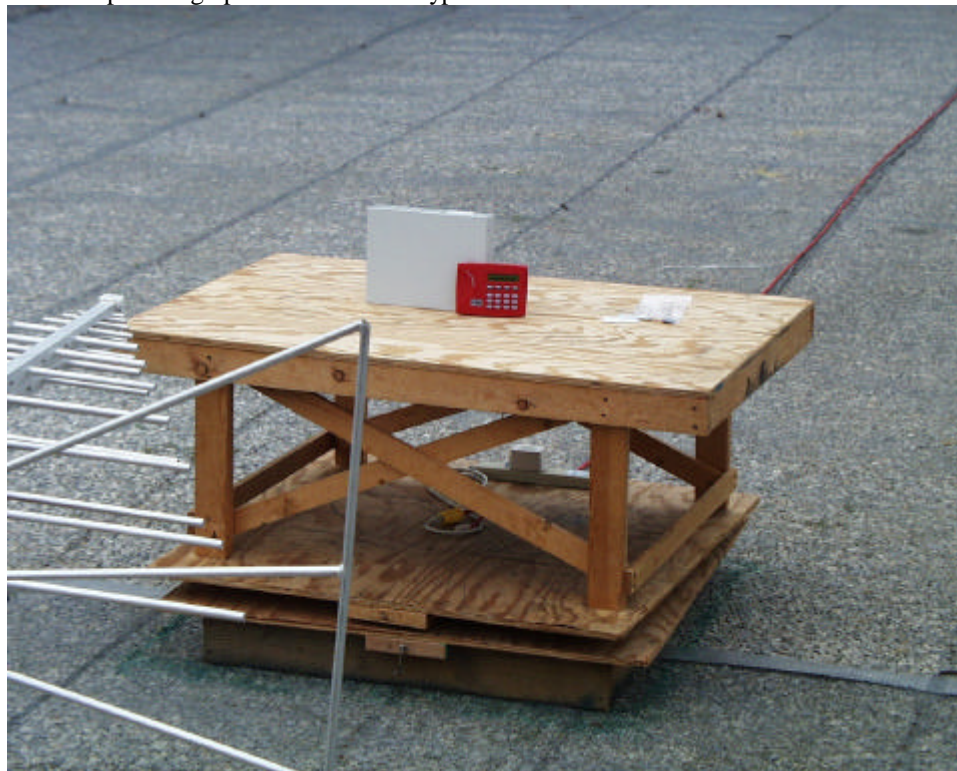


Test Setup Photographs for PC0086 Keypad.



ROGERS LABS, INC.
4405 W. 259th Terrace
Louisburg, KS 66053
Phone/Fax: (913) 837-3214

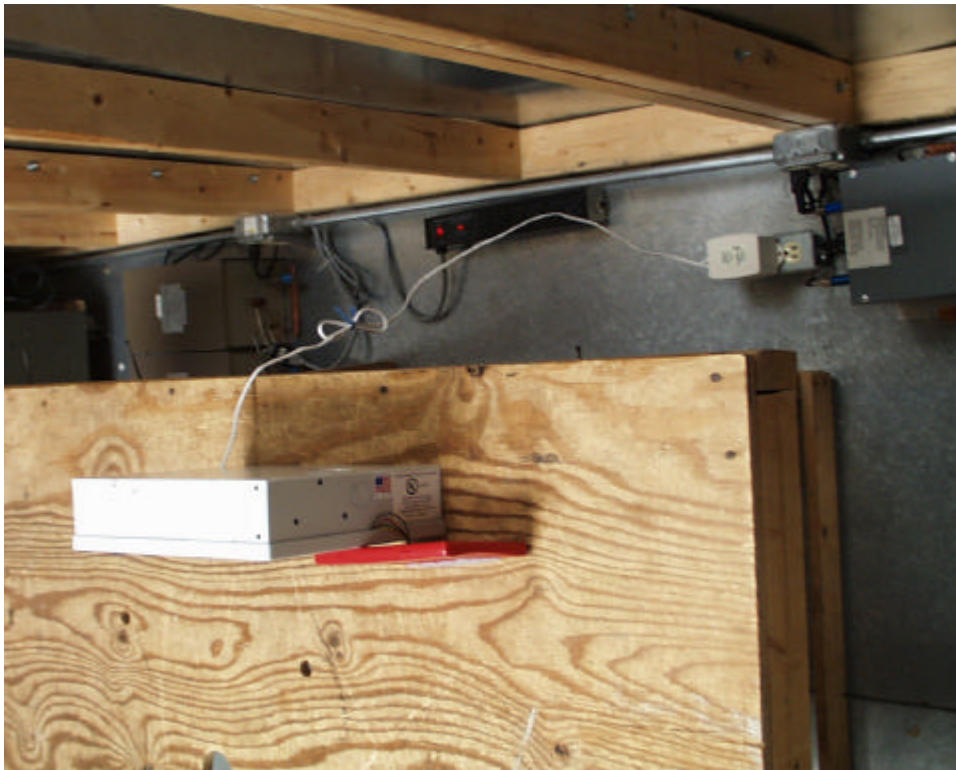
Digital Monitoring Products, Inc.
MODEL: PC0086 Keypad
Test #: 040727
Test to: FCC Parts 2 and 15C
FCC ID#: CCK PC0086
Page 1 of 4
DMP PC0086 KeypadTsup.doc 8/17/04



ROGERS LABS, INC.
4405 W. 259th Terrace
Louisburg, KS 66053
Phone/Fax: (913) 837-3214

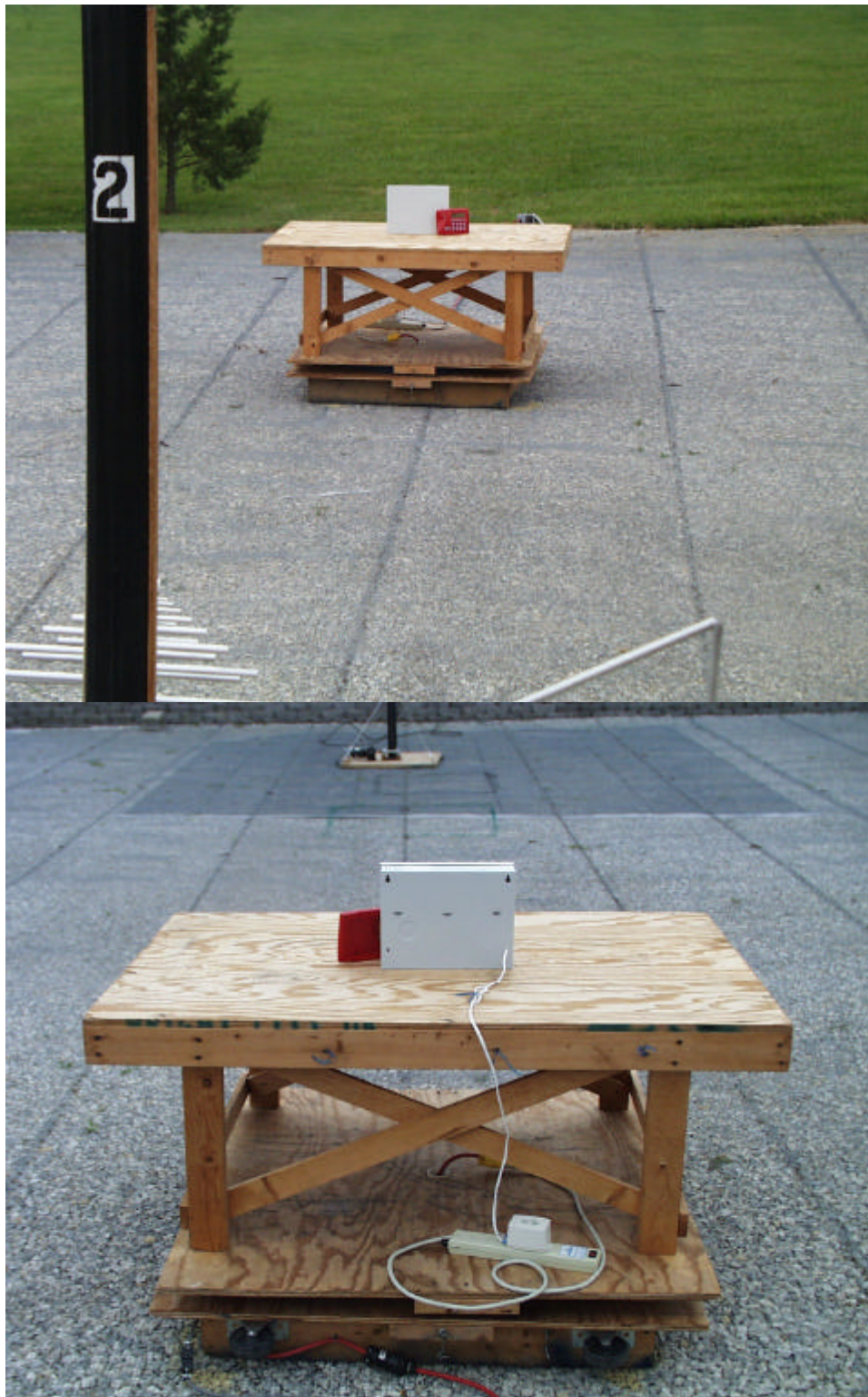
Digital Monitoring Products, Inc.
MODEL: PC0086 Keypad
Test #: 040727
Test to: FCC Parts 2 and 15C

FCC ID#: CCK PC0086
Page 2 of 4
DMP PC0086 KeypadTsup.doc 8/17/04



ROGERS LABS, INC.
4405 W. 259th Terrace
Louisburg, KS 66053
Phone/Fax: (913) 837-3214

Digital Monitoring Products, Inc.
MODEL: PC0086 Keypad
Test #: 040727
Test to: FCC Parts 2 and 15C
FCC ID#: CCK PC0086
Page 3 of 4
DMP PC0086 KeypadTsup.doc 8/17/04



ROGERS LABS, INC.
4405 W. 259th Terrace
Louisburg, KS 66053
Phone/Fax: (913) 837-3214

Digital Monitoring Products, Inc.
MODEL: PC0086 Keypad
Test #: 040727
Test to: FCC Parts 2 and 15C
FCC ID#: CCK PC0086
Page 4 of 4
DMP PC0086 KeypadTsup.doc 8/17/04