

SMART LOCK PUSH & PULL

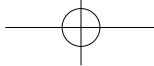
CDL-3PBR/3PBRBC USER MANUAL



GOD DESIGN

COMMAX





Overview



Robust Door Lock Body

KS & KC authentication give guaranteed Quality and insured Product Satisfaction.



Metallic Diecasting Design

Metal body is durable to fire and shock from outer side hazard and damage.



Auto Lock/ Re Lock/Double Lock Function

User Friendly Function give Safety and easy usage.



Dummy Number Functions give high level safety.

Dummy Number & Real number combination give high level password.



Multi-registrations for pin-number & electronic key

It is easy to register the pin-number(up to 4) and you can also register the electronic key(up to 30 ea). it available to Traffic card/credit Card, too.



Multi-level volume control / mute optional Function

User can easily select 7level Volume Control.



Light Button indicate in the dark space

You can easy to use the device using light keypad buttons.



Emergency Power Function (9V square battery)

Emergency power working even if the batteries run out completely.



Anti high-voltage / anti fireproof / anti-hacking system

It is very safe for using anti high-voltage and anti-hacking system. Also if the temperature is higher than certain temperature, the door will be open automatically with warning sounds under the fire.

Safety Cautions

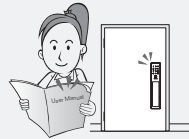
- ! Don't install, repair or disassemble the device randomly.



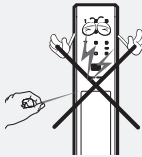
- ! This device is suitable for home safety level, other condition will not be guaranteed quality.



- ! Please read operation manual Carefully.



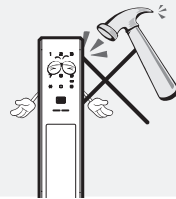
- ! Don't push or insert the button with drill or pin.



- ! Change the pin-number regularly for the safety.



- ! Don't heavy damage on door lock.

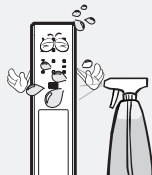


- ! Do not insert the batteries reversely. it will be cause some burst or leakage from batteries .

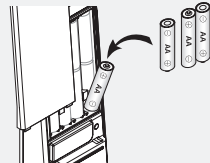


(LR6 AA)

- ! Don't put water into the device.



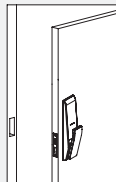
- ! when change battery, please use all new alkaline battery.

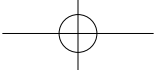


- ! When you clean the device, please use the dry towel.



- ! Do not use any other purpose for Door lock.





CONTENTS

| | | | |
|-------|------------------------------|--|-------|
| 01 | Specification | | 05 |
| <hr/> | | | |
| 02 | Parts Name | | 06 |
| <hr/> | | | |
| 03 | How to use | | |
| | 1 | Setting Pin Number | 08 |
| | 2 | Setting Smart Key | 09 |
| | 3 | Setting BLE(Smartphone) | 10 |
| | 4 | Delete setting Smartkey | 11 |
| | 5 | Delete setting BLE | 12 |
| | 6 | Open the gate(Keypad) | 12,13 |
| | 7 | Lock the gate(Outside) | 14 |
| | 8 | Open the gate(Inside) | 14 |
| | 9 | Lock the gate(inside) | 15 |
| | 10 | Force Lock Status | 15 |
| <hr/> | | | |
| 04 | Easy Function (option) | | |
| | 1 | Autolock Setting | 16 |
| | 2 | Manual Setting | 16 |
| | 3 | Sound Pause Function | 17 |
| | 4 | Volume Control Function | 17 |
| | 5 | Dual Authentication &Registration on/off | 18 |
| | 6 | Built in Remocon Setting | 19 |
| <hr/> | | | |
| 05 | Emergency Alarm Function | | |
| | 1 | Heat Warning | 20 |
| | 2 | Intruder Alarm | 20 |
| | 3 | Warning Mischief and 1min stop function | 20 |
| | 4 | Deadbolt(mortise) Error Alarm | 21 |
| | 5 | Battery Replacement Warning | 21 |
| | 6 | Emergency Power | 22 |
| | 7 | Emergency Key(key type) | 22 |
| <hr/> | | | |
| 06 | Breakdown Cause and Solution | | 23 |
| <hr/> | | | |
| 07 | Consumer Protection Rules | | 24 |
| <hr/> | | | |
| 08 | Product Warranty | | 25 |

01 Specifications

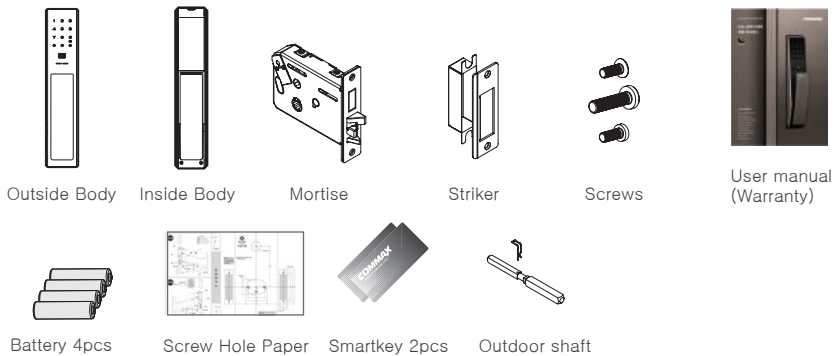
Product Standard

| Division | | Features |
|-------------------|---|---|
| Install Condition | Normal Fire Door | Door thickness 40mm ~ 50mm |
| Access Methods | Pin Number | 4~12 digit number combination(Up to 4 pin number) |
| | Smart key | Up to 30 keys |
| | Smartphone | Option |
| | Remocon | Option |
| Rated Voltage | DC 6V | LR6 1.5V AA Size Alkaline Battery, 4 pcs |
| Emergency Power | DC 9V | Alkaline battery(Optional) |
| Product Type | Fireproof type, Temperature sensor type, Key type, Master key door lock(D-NF-T-K-M) | |
| Temperature Alarm | Temperature Sensor | 72°C ±5°C (Lab Conditions) |
| | | 62°C ±5°C (Normal Conditions) |
| Material | External Enclosure | Al, Zn, ABS |
| | Internal Enclosure | Al, Zn, ABS |

RF Standard

| Item | Frequency | Channel | Modulation | Antenna power (field strength) |
|------------------|------------|---------|------------|--------------------------------|
| RFID | 13.56Mhz | 1ch | ASK | Under 93.5dBuV/m@10m |
| Wireless Devices | 447.275Mhz | 1ch | FSK | Under 10mW |

Features



www.commax.com 5

02 Parts Name

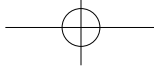
Outside Body Name & Function



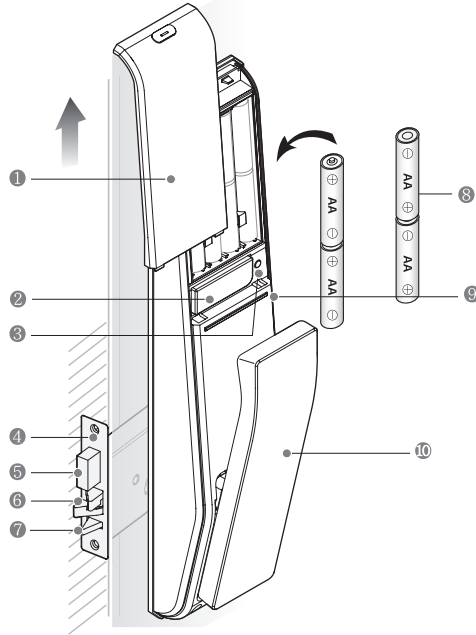
9V Emergency Battery
(Sold Separately)

| No | Name | Features |
|----|---------------------------------|---|
| ① | Key Buttons | Register or change the pin number. Open the door with registered pin number. |
| ② | Battery Alarm | Open/register the electronic key. |
| ③ | Smartkey Access Point | Smartkey access point for open gate. By Contracting smartkey open the door or register smart key. |
| ④ | Outside Handle | handle can open or close the door |
| ⑤ | Emergency Power Supply Terminal | When battery fully discharged, contact 9V battery and power on emergency power working |

⑥ Digital Door Lock COMMAX

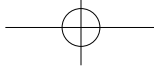


Inside Body Name & Function



Usage

| No | Name | Features |
|----|---------------------|--|
| ① | Battery Cover | Cover for battery and buttons for registration of pin number & electronic key. |
| ② | Link Pack | Receiver (CDL-447RM, option) |
| ③ | Register Button | Use registration or change the pin number or electronic key |
| ④ | Mortise | Lock or close the door for installing side of door. |
| ⑤ | Dead Bolts | Lock the door to door frame. |
| ⑥ | Wrench Bolts | Prevent to shake the door. |
| ⑦ | Sub Wrench Bolts | Check for Door open or Close. |
| ⑧ | Alkaline AA Battery | Battery for main power |
| ⑨ | Manual Lock Button | Lock the door under manual mode |
| ⑩ | Inner Handle | Open or close the door from inside. |



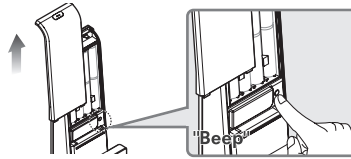
03 How to use

1 Setting the Pin-number

⚠ Caution Please set the pin number while you **open the door.**

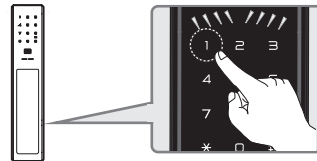


- ① Open the inside [battery cover], push the [Register] Button and hear "Beep" sound shortly.



Outside

- ② Check outside light on [Keypad] push the button NO ① .



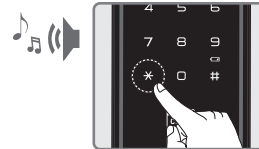
Outside

- ③ Set the pin number 4 to 12 digits.



Outside

- ④ Push the [*] button make "Beep" Sound and succeed registration
One more push the [*] button and completed registration.



Note Add the other pin-number, you repeat ③, ④ until turn off the lights on keypad. (Pin number can be registered up to 4 pin numbers.)



Caution The registration will be canceled when you do not push any numbers for 10 seconds after push the registration button. If you register new pinnumbers, old one will be deleted automatically.

8 Digital Door Lock COMMAX

2 Setting Smart Key

Caution Newly registered smart key or re-registered, please register at a same time. other card not possible except provided card.

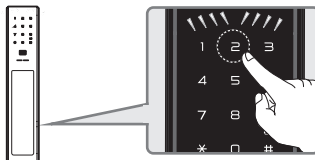


- ① Open the battery cover,
Push the registration button once
then you can hear "Beep" sound.



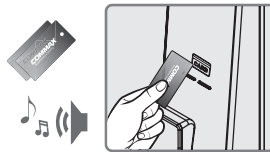
Outside

- ② Check outside light on [Keypad]
② push the ② on the Keypad, ↓ direction Dimming



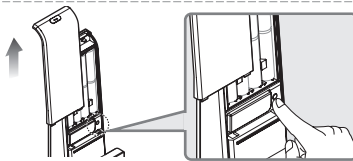
Outside

- ③ [Smart key]close up on [smart key input]
when succeed registration, sound beeping



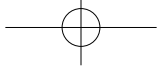
Inside

- ④ Push the [Register]button,
it completed Registration.



Note if you want to add smartkey, it available max 30keys. if you want more add up smartkey please repeat no ③ process before turn off [Keypad]light.

Caution it canceled [Register]button if smartkey not attach smartkey input.
if new smartkey register (Process ① , ② , ③ , ④), previous register smart key will be automatically deleted.



03 How to use

3 Setting BLE (Smartphone)

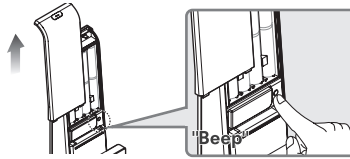
(CDL - 3PBR Model case)



Caution Please set the BLE while you open the door.

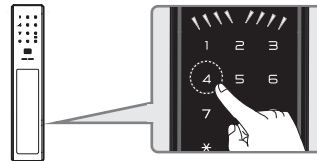


- 1 Open the inside [battery cover], push the [Register]Button and hear "Beep" sound shortly.



Outside

- 2 Check outside light on [Keypad] push the button NO 4 LED Light will indicate clockwise signal.



Outside

- 3 and activate BLE on the Smart phone.
if Smartphone BLE indicate register status, it register on smartphone.



Outside

- 4 Push the [Register]button, it completed Registration.



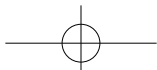
Note

Add the smartphone, you repeat ③, ④ until turn off the lights on keypad.
smartphone can possible max 10pcs



Caution

The registration will be canceled when you do not push any numbers
for 20 seconds after push the registration button.



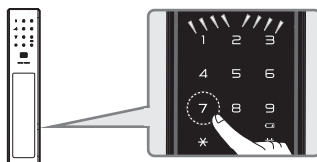
4 Delete setting Smartkey

- ① Open the inside [Battery cover] push the [Register] Button and hear "beep" sound shortly.



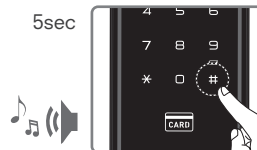
Outside

- ② Check outside [Keypad] lightning on, Push the [7] Button, light on [#] Button.



Outside

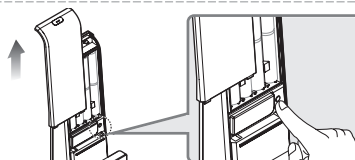
- ③ Push the [#] during 5sec. it makes 'Beep' sound and delete entire smartkey information.



03 How to use

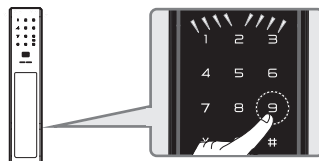
5 Delete Setting BLE (CDL - 3PBR Model Case)

- ① Open the inside [Battery cover] push the [Register] Button and hear "Beep" sound shortly.



OutSide

- ② Check outside light on [Keypad] push the button No press No 9 Button and LED Light on [#]



OutSide

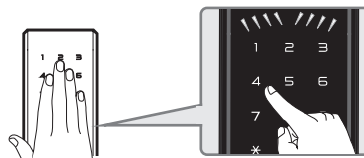
- ③ Press button 5sec [#]
Beep sound and delete whole BLE Registered key.



6 open the gate (Keypad)

Method 1 Key pad opening

- ① Touch [Keypad], input [Password].



- ② Push the [*] button and belling beep sound Door will be released.



Note

Dummy number function will be add up head or tail to original password.

① dummy No+original password ② original password+dummy No
(for preventing from other person cheating password)

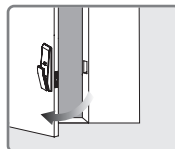
6 Open the gate (Smart Key)

Method 2 Smartkey Opening

- 1 Registered [Smart Key] close to [Smart key] access point.



- 2 Beep sound and open the Gate.



Note

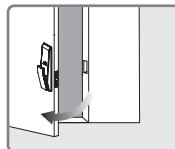
In case of Credit card/Traffic card, touch key first and then light on [Keypad] and close to access point, it will be open the gate.

Method 3 BLE(smartphone)Opening (CDL - 3PBR Model type)

- 1 Shake on [BLE (Smartphone)] on the access point.

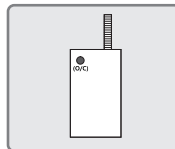


- 2 Beep sound and open the oate.



Method 4 Remocon opening (option)

- 1 Push the [OP/CL] button on the Remocon and open the gate.

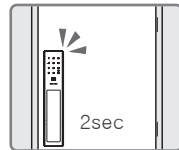


03 How to use

7 Lock the gate (Outside)

Method 1 Auto Locking

- ▶ Closing the door and lock the door after 2second automatically.



Method 2 Manual Locking

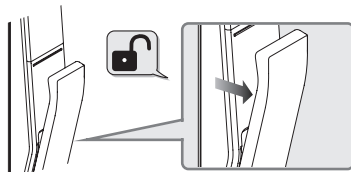
- ▶ Touch the [Keypad], door will be lock.



8 Open the gate

Method 1 Pull the inside handle

- ▶ Just pull the handle, open the door easily.

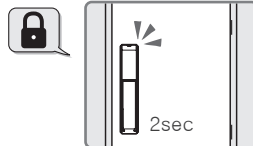


Caution Do not use or install outside dragging type door

9 Lock the gate (inside)

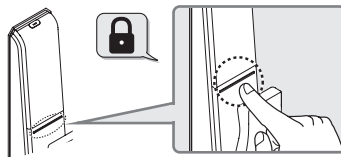
Method 1 Auto Locking

- ▶ Closing the door and lock the door after 2 second automatically.



Method 2 Manual Locking

- ▶ Push the inside [double lock] button, door will be manual locking.



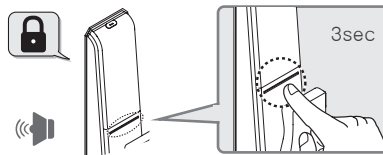
Note Manual locking push the [double locking], gone to Locking status "beep" noise and entered Double locking status.

10 Force Lock Status

■ Force Locking - Impossible by password, Smartphone, Smartkey from outside.

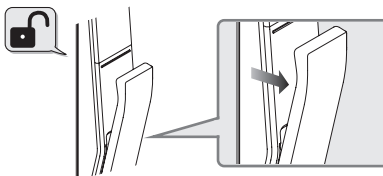
Method

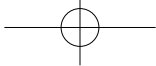
- ① Enter Lock Status
- ② Push the [Double Lock] 3sec, beep sounding and enter Force Locking.



Releasing

Pull the handle from inside, Force Locking will be released.



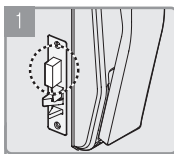


04 Easy Function (option)

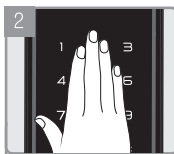
1 Autolock Setting

This function is Autolock setting

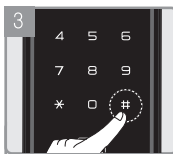
Autolock Setting Open the door status



1 Please check beside mortise Pop up.



2 Touch the outside [Keypad]



3 Input password and push the [#] button twice.

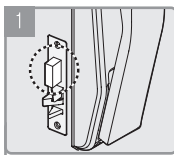


4 Push the No[4] and complete Beeping and setting Autolocking.

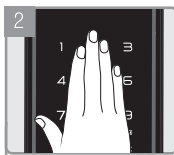
2 Manual Setting

This function is Manual Lock setting

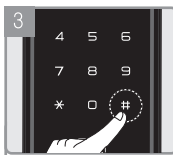
Manual Lock setting Open the door status



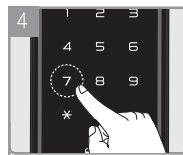
1 Please check beside mortise Pop up.



2 Touch the outside [Keypad]



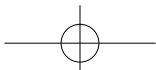
3 Input password and push the [#] button twice.



4 Push the No[7] and complete Beeping and setting Autolocking.



Note Factory default is Auto lock setting.



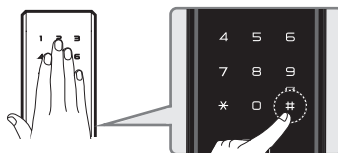
3 Sound Pause Function

This function for 1time mute for preventing beeping.

Method

Touch outside [keypad]and push the [#]

- ① Password: input password and push the [*] button
- ② Card: Card access the sensor
- ③ BLE(Smartphone) : BLE access and open the gate.



Note

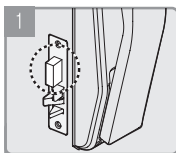
This function is just 1time, next time back again beep sound status

4 Volume Control Function

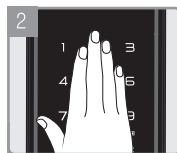
This function for Volume Level control function. (closing door status available)

Method

※ Volume control by 7 level.



1 Please check beside mortise Pop up.



2 Touch the outside [Keypad]



3 Input password and push the [*] button twice.



4 Push the No[3] or No[6] button on the [Keypad]



Note

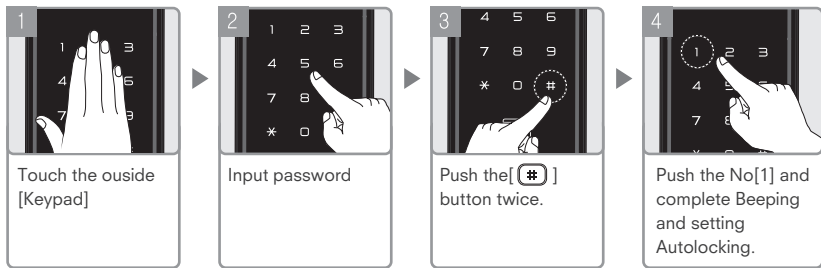
push the keypad of No[3] button volume up.
No[6] button volume down.
when enter Stop volume function keypad Blink

04 Easy Function (option)

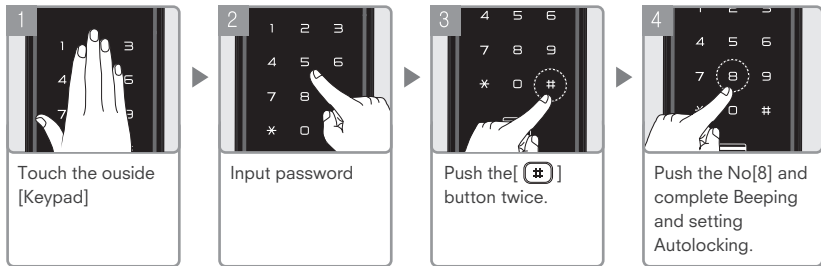
5 Autolock Setting

This function is Dual authentication and registration on / off

Dual Authentication on/off



Registration on / off



Note

- ① Dual authentication mode can open Smart key and password together.
 - ② Registration mode can open previous password input.
 - ③ each process will be off by same process (sound : bee-leek)
- ※ Factory default is Dual Authentication and Registration off status.

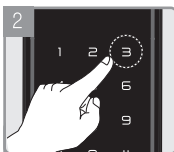
6 Built in Remocon Setting

This function is Built in remocon setting. (for only Built remocon included model)

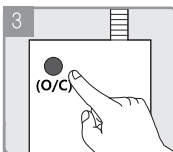
Remocon on



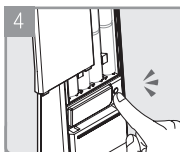
Open the inside [Battery cover] push the [Register] Button and hear "Beep" sound shortly.



Push the No[3] button and indicate Antenna icon LED.



Push the [OP/CL] button on the Remocon.



Push the inside [Register] button, it completed Remocon setting



Note

Add more remocon, please repeat no 2 process before light blink off (max 5 remocon available)



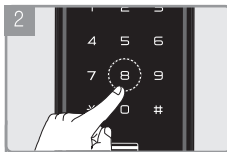
Caution

Push the [Register] button and not link with Remocon, it will be canceled remocon setting.
New remocon Setting before Remocon will be deleted.

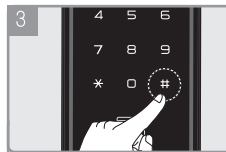
Remocon off



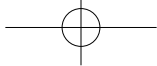
Open the inside [Battery cover] push the [Register] Button and hear "Beep" sound shortly.



Push the No[8] button



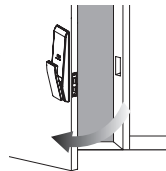
Push the [#] button 5sec, "beep" sound and remocon will be off status.



05 Emergency Alarm Function

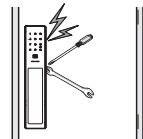
1 Heat Warning

When a fire is detected, a high temperature of about suspected ($62^{\circ}\text{C} \pm 5^{\circ}\text{C}$), automatically releases the locked state with strong beeps for safety.



2 Heat Warning

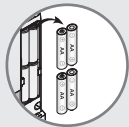
Abnormally in the door is locked (For example: forcibly open the gate) occurs when the door open condition is detected
Beep noise makes 80 db (db) beeper.



Turn off heat warning & Intruder alarm

Remove battery or input [password] or attach [smart key] , it will be turn off warning and alarm.

※ When high temperature status, it will be not turn off status. please cool down temperature.



Turn off alarm

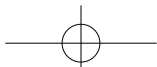


Caution In case of inside body receive sunlight, it will be warning and alarm. so, dual authentication will be turn off automatically

3 Warning mischief and 1 minute stop function

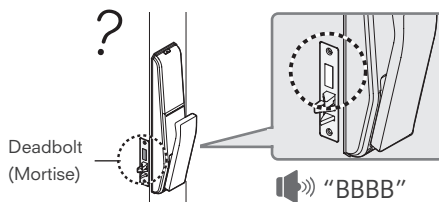
If input not registered [password] or [Smart Key repeatedly entered five times] stop operating 1 minutes with alarm.

Mistake input
5 times??



4 Deadbolt(mortise)error alarm

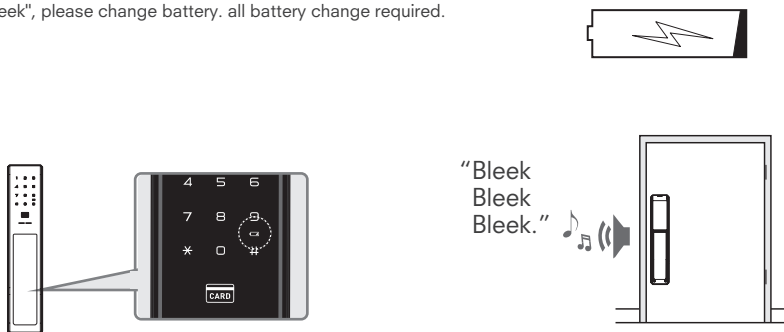
Opened or locked, when the dead bolt (square clamp) of the indoor unit body is normally taken out, or do not enter "beep, beep beep, beep" warning sound occurs three times.



! Caution If sound alarm continuous or not working properly, it required reallocation door lock position, please contact installer or door lock professional company.

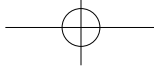
5 Battery Replacement Warning

Battery icon light on the Keypad or make sound "bleek bleek bleek", please change battery. all battery change required.




! Caution Do not use mixed with used battery and New battery , Please change all battery to new ones.


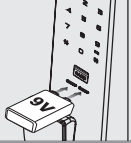


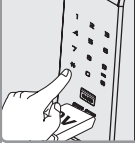
! Caution Wireless module use battery consumption, Battery recycle will be more shorthen.



05 Emergency Alarm Function

6 Emergency Power

 Note Battery gone, impossible open the door status.

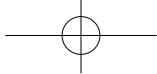
- | | | | | |
|--|--|--|--|---|
| <p>1</p>  | <p>2</p>  | <p>3</p>  | <p>4</p>  | <p>5</p>  |
| <p>Buy 9V Battery.</p> | <p>9v battery attach Emergency Power supply terminal.</p> | <p>Press the [*] button</p> | <p>Input [Password].</p> | <p>Push the [*] Button again and it beep and unlock.</p> |

06 Break down cause and solution

If the product does not operate normally, check the following check point first.

| Problem | Solution | Remarks |
|--|---|---------|
| No Power | <ul style="list-style-type: none"> - Please check battery status bad or gone power and check battery input direction - please change new 4 alkaline Battery. | |
| No Change Password | <ul style="list-style-type: none"> - Please input password short "Beep" sound one by one. - Again password register / repeat input. | 8 Page |
| No open the door though push the [*] button | <ul style="list-style-type: none"> - please check passwor input correctly - When input password, keypad light off, it will be not change password , presss the [*] button and check keypad light on, input password again. (if didnot input password within 7sec, it will be canceled.) | 8 Page |
| Password / Smart key authentication success but no open the door | <ul style="list-style-type: none"> - Please try 9V emergency power(square type) - Lock can may broken. please contact installer. | 22 Page |
| keep going alarm "Beleek x3 " warning sound. | <ul style="list-style-type: none"> - Beep indicating the battery replaced. if you heard this alarm, please replace all new 4pcs battery. | 21 Page |
| No enter Auto Locking | <ul style="list-style-type: none"> - Please reset automode. - Sound occurs the batteries discharge and does not work. please change all new battery | 16 Page |

Usage



07 Consumer Protection Rules

- COMMAX conducted a guarantee of the product as shown below each item, depending on the consumer compensation regulations.
- Please install the product can not be installed by a professional installer or authorized installer to install receive A / S if faulty.

Emergency Power

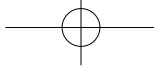
If the product fails within the first year after purchase (the warranty period), you get the free service only.

※ If the warranty period will be shortened half period by commercial usage.

| Consumer Damage Type | | Compensation | |
|--|--|------------------|---------------------------|
| | | within Warranty | after warranty |
| Functional defects in normal use occurred in 10 days | | Product Exchange | |
| Functional defects in normal use occurred in 1month | | Product Exchange | |
| Serviceable | same fail 3times again | Repair free | Repair charge |
| | same file 4times again | Product exchange | Repair charge |
| No Serviceable | When repair parts for repair but impossible (within the parts holding period)) | Product Exchange | Depreciation and exchange |
| | When repair parts are not impossible to repair (parts within the retention period) | Product Exchange | Depreciation and exchange |

Paid Service

| | |
|--|---|
| 1. For non-failure | <ul style="list-style-type: none"> • If it is not subject to failure, it will be service charge. Please read the instruction manual. • Installation issue on non-malfunction. • Force damage on the device for lost password. |
| 2. If the consumer fails to negligence | <ul style="list-style-type: none"> • User Handling of abuse or inappropriate repair, modification and trouble occurs. • Non official installer or non professional person installed and make trouble. • Drop or make damage by cause of fault or error. |
| 3. etc | <ul style="list-style-type: none"> • If any trouble occurs due to natural disasters (lightning, fire, salt damage, flood, etc.) • If the end-life of the consumable parts (batteries, etc.) • normal case consumer receive within 15month(including distribution period) |



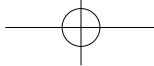
08 Product Warranty

| | |
|---------------------------|-----------------------------|
| Product Name | CDL-3PR / 3PBR |
| Product Number | |
| Purchase (installed) Date | 20 year month days |
| Customer's Name | |
| Telephone | |
| Address | |
| Installer Company | |
| Telephone | |
| Address | |
| Installer's Name | |

Usage

※ Please keep this document for full service must present this warranty.

- 1) Warranty for this product is the warranty benefits to the contents listed in the warranty.
- 2) The warranty period is calculated from the date of purchase, so please obtain a base purchase date.



FCC Statement

15.19:

This device complies with part 15 of the FCC rules. Operation is subject to the following two conditions: (1) This device may not cause harmful interference, and (2) This device must accept any interference received, including interference that may cause undesired operation.

15.21:

Note: The grantee is not responsible for any changes or modifications not expressly approved by the party responsible for compliance. Such modifications could void the user's authority to operate the equipment.

15.105(b):

Note: This equipment has been tested and found to comply with the limits for a Class B digital device, pursuant to part 15 of the FCC Rules. These limits are designed to provide reasonable protection against harmful interference in a residential installation. This equipment generates uses and can radiate radio frequency energy and, if not installed and used in accordance with the instructions, may cause harmful interference to radio communications. However, there is no guarantee that interference will not occur in a particular installation. If this equipment does cause harmful interference to radio or television reception, which can be determined by turning the equipment off and on, the user is encouraged to try to correct the interference by one or more of the following measures:

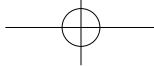
- Reorient or relocate the receiving antenna.
- Increase the separation between the equipment and receiver.
- Connect the equipment into an outlet on a circuit different from that to which the receiver is connected.
- Consult the dealer or an experienced radio/TV technician for help.

Disclaimers

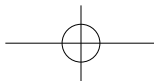
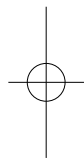
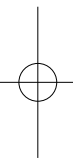
The manufacturer, importer, and distributor shall not be liable for damages including accidental and personal injury due to the improper use or operation of this product. The information in this user manual was written based on current product specifications. The manufacturer, iriver Limited, is adding new complementary features and will continue to apply new technologies in the future. Product specifications may be changed without prior notice. iriver is not responsible for data loss due to product use.

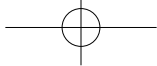
Exposure statement

The transmitter must not be co-located or operated in conjunction with any other antenna or transmitter. This equipment complies with the FCC RF radiation exposure limits set forth for an uncontrolled environment. This equipment should be installed and operated with a minimum distance of 20cm between the radiator and any part of your body.



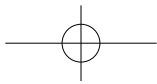
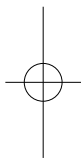
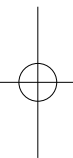
MEMO





MEMO

MEMO





COMMAX

COMMAX Co.,Ltd.
#13229, 494, Dunchon-daero, Jungwon-gu, Seongnam-si, Gyeonggi-do, Korea
TEL. +82-31-7393-540-550 FAX. +82-31-745-2133

www.commax.com
www.facebook.com/commax.global
www.youtube.com/commaxvideo