

Internal Photos

Cover opened (Indoor_1)



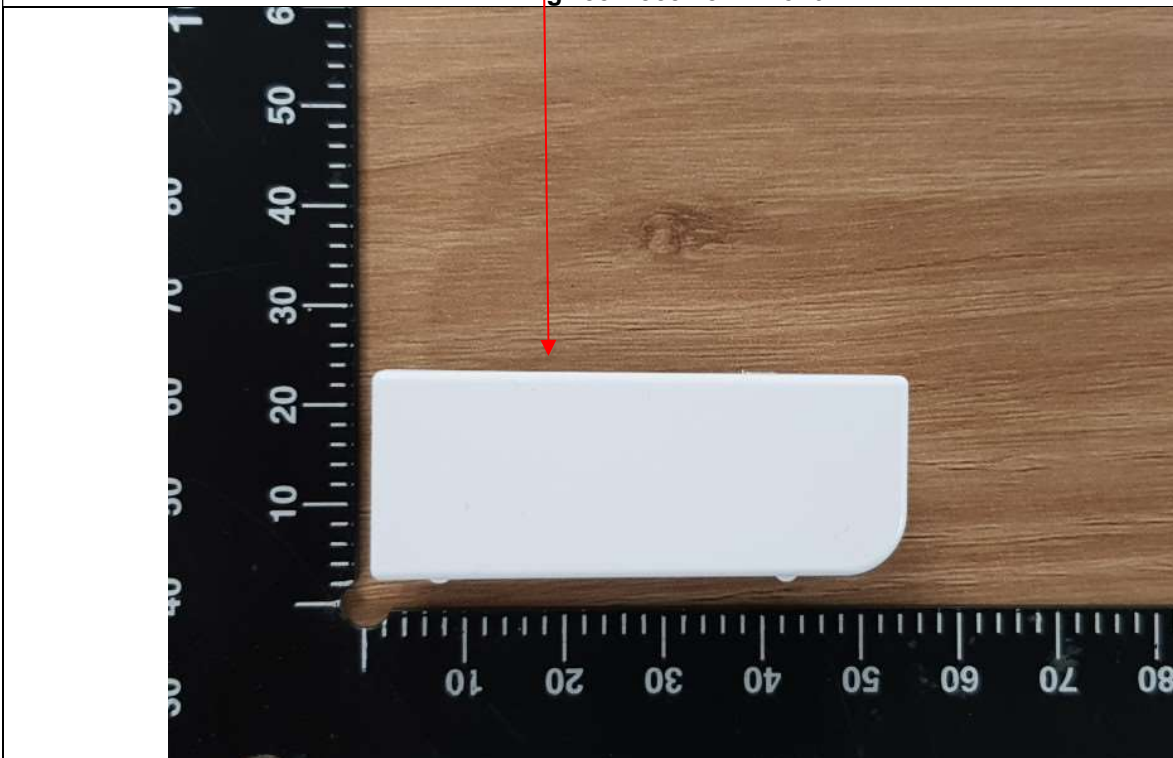
Cover opened (Outdoor)



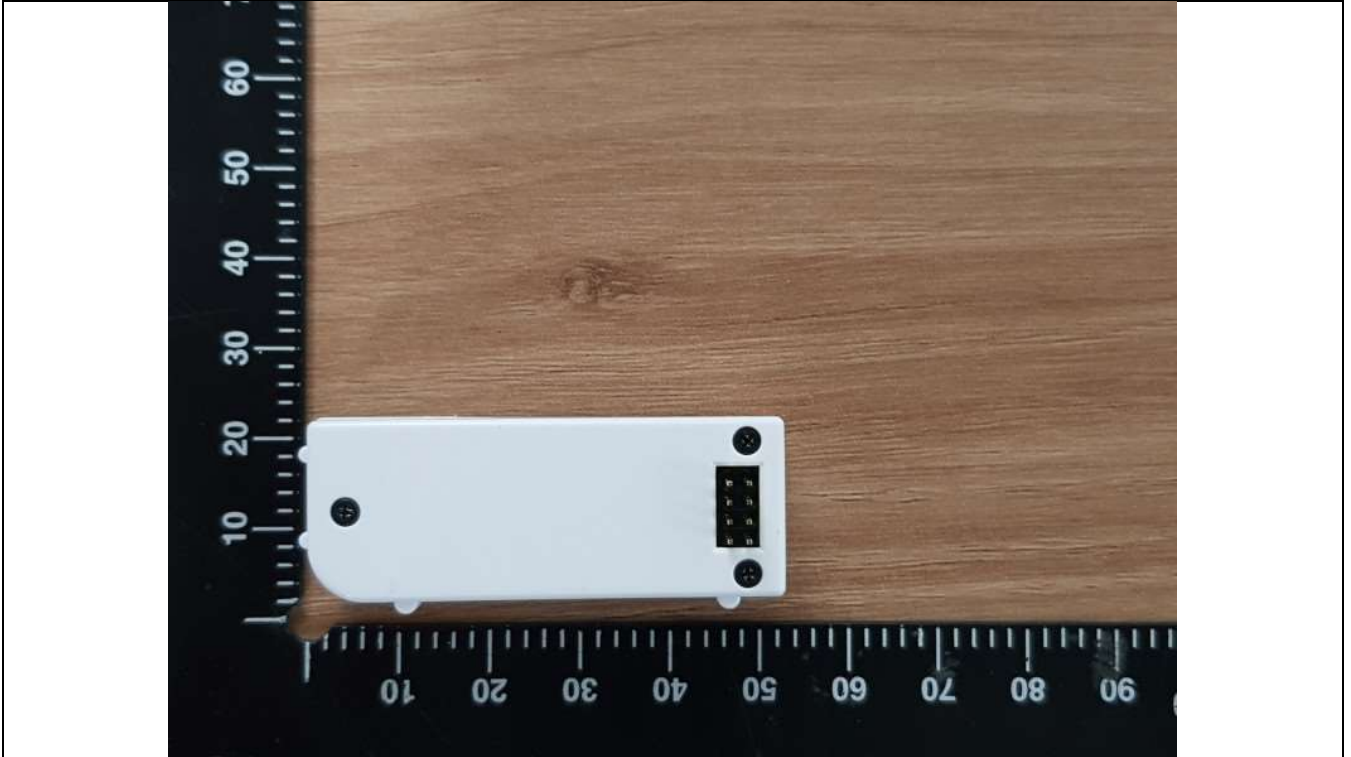
Cover opened (Indoor_2)



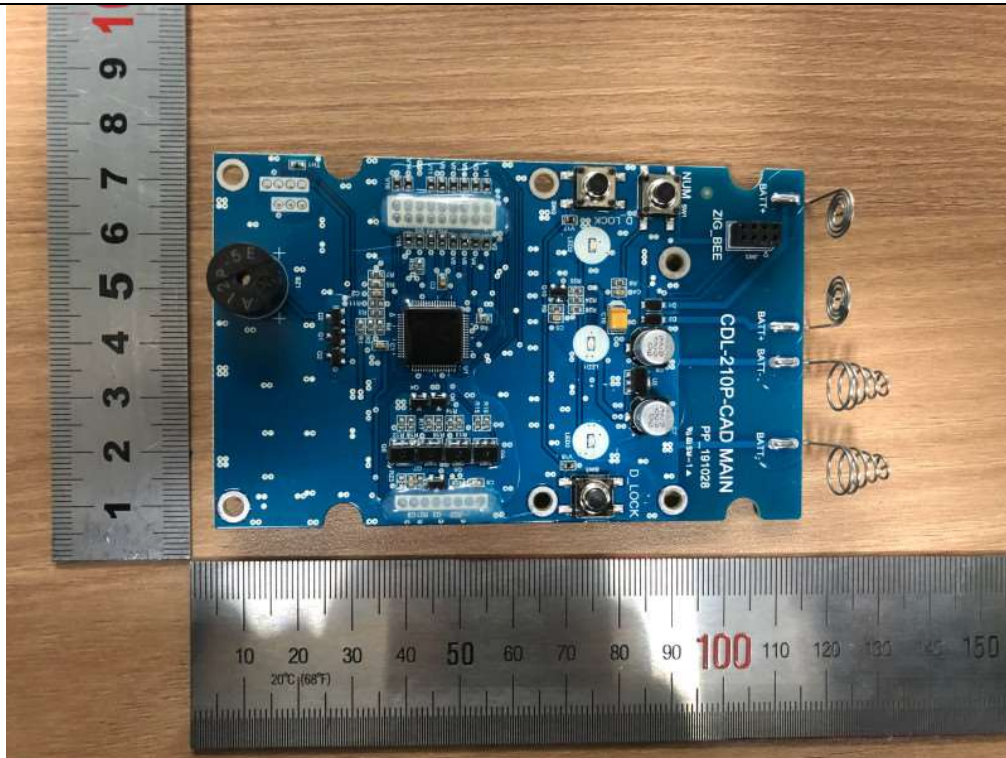
ZigBee Receiver - Front



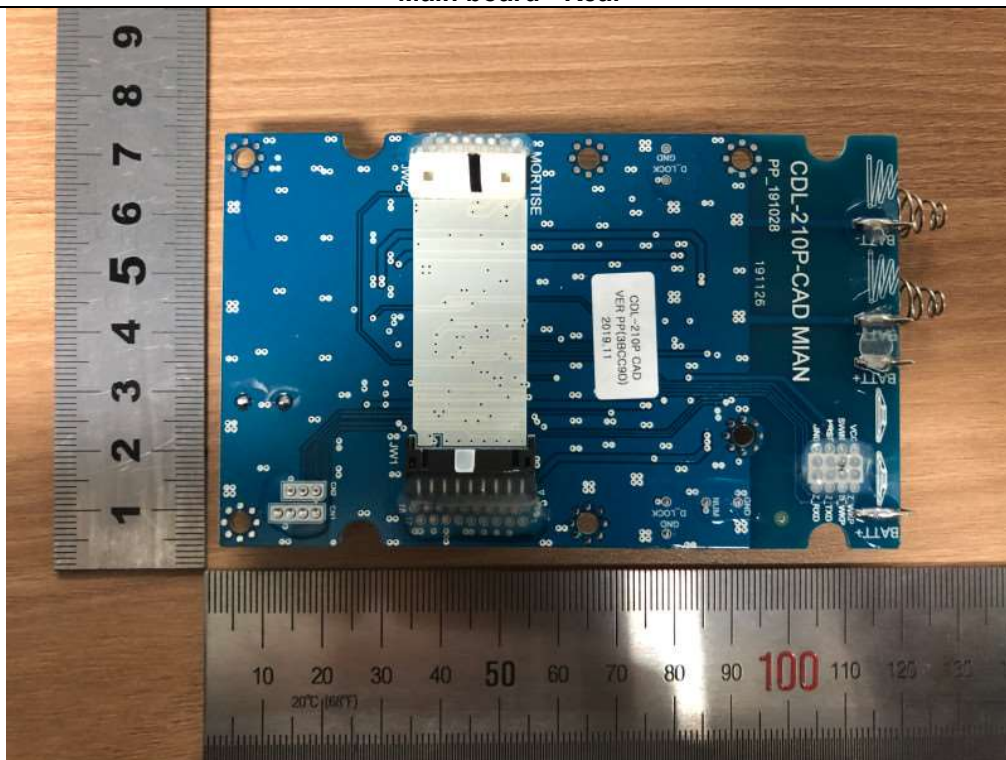
ZigBee Receiver - Rear



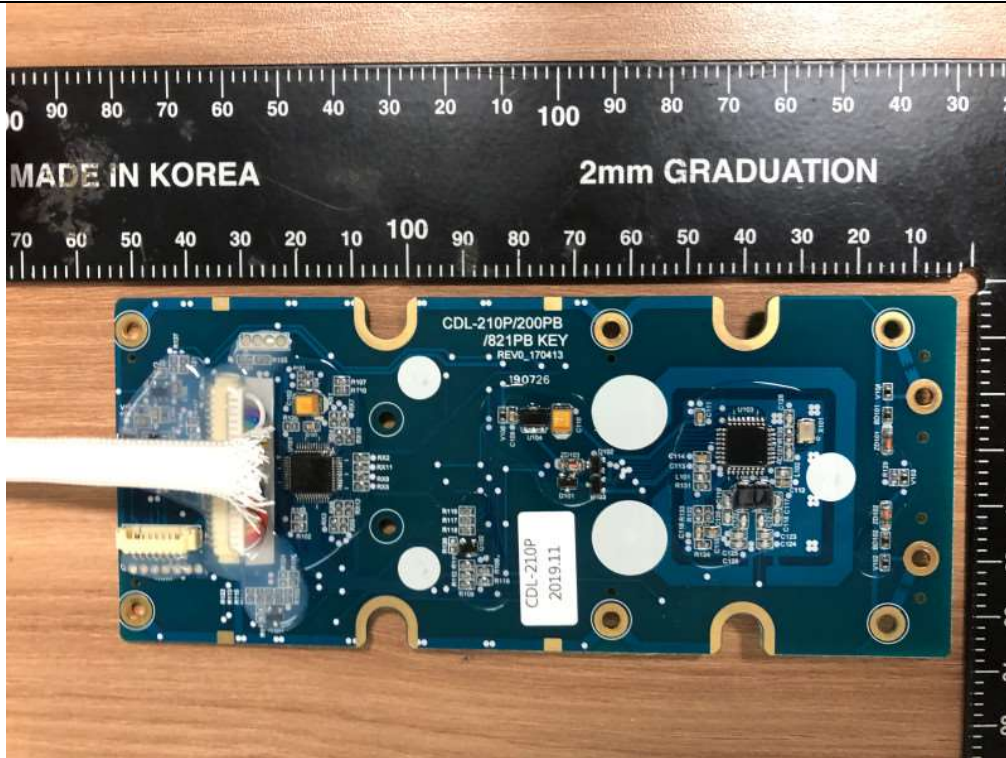
Main board - Front



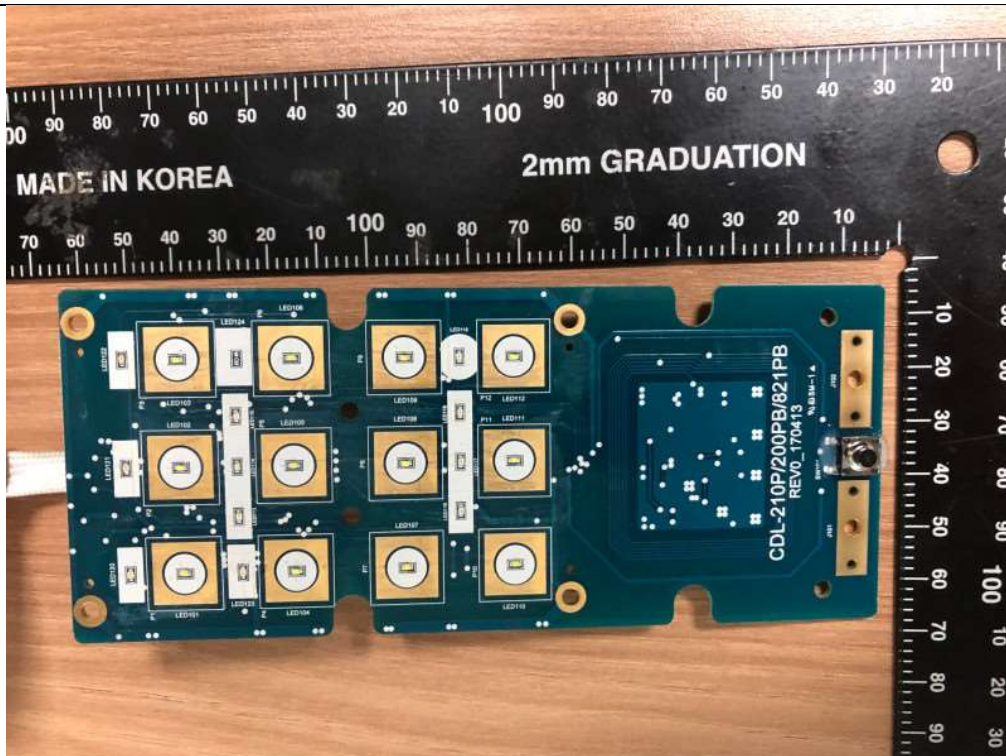
Main board - Rear



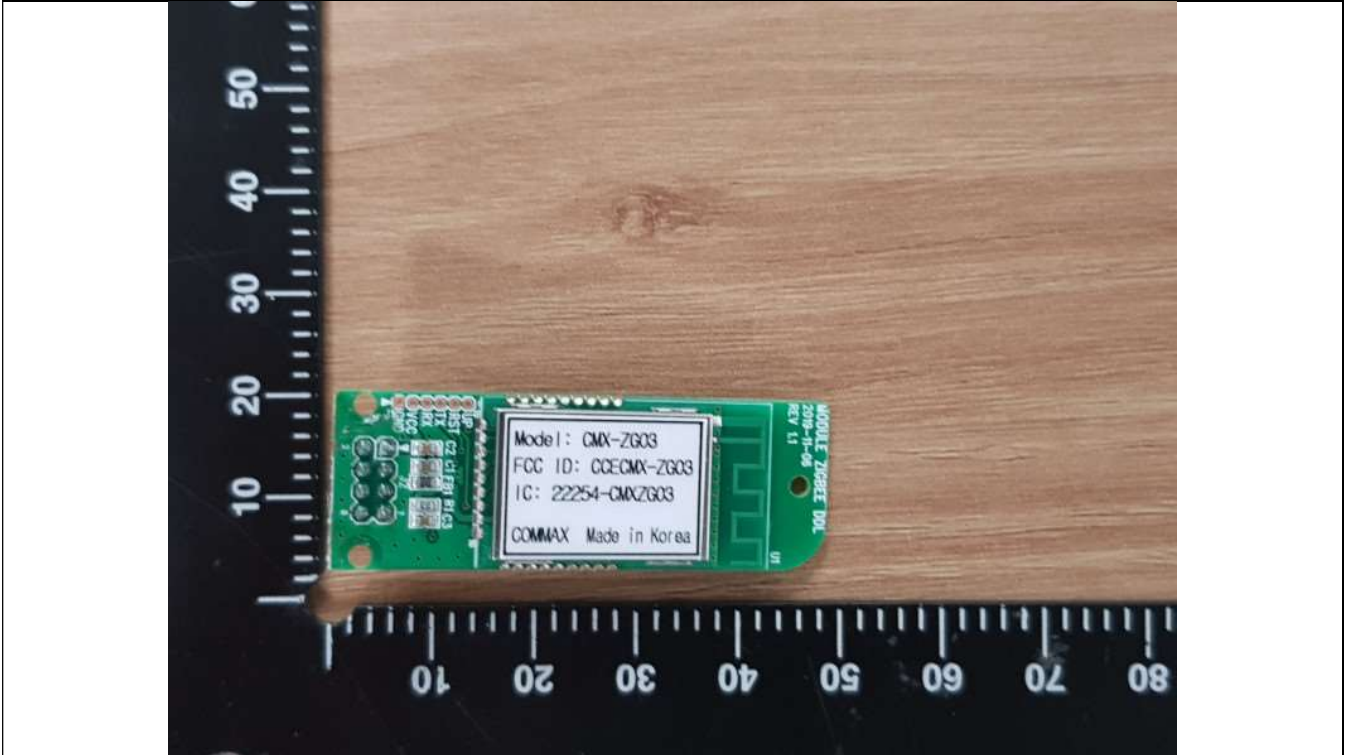
KEY Pad PCB - Front



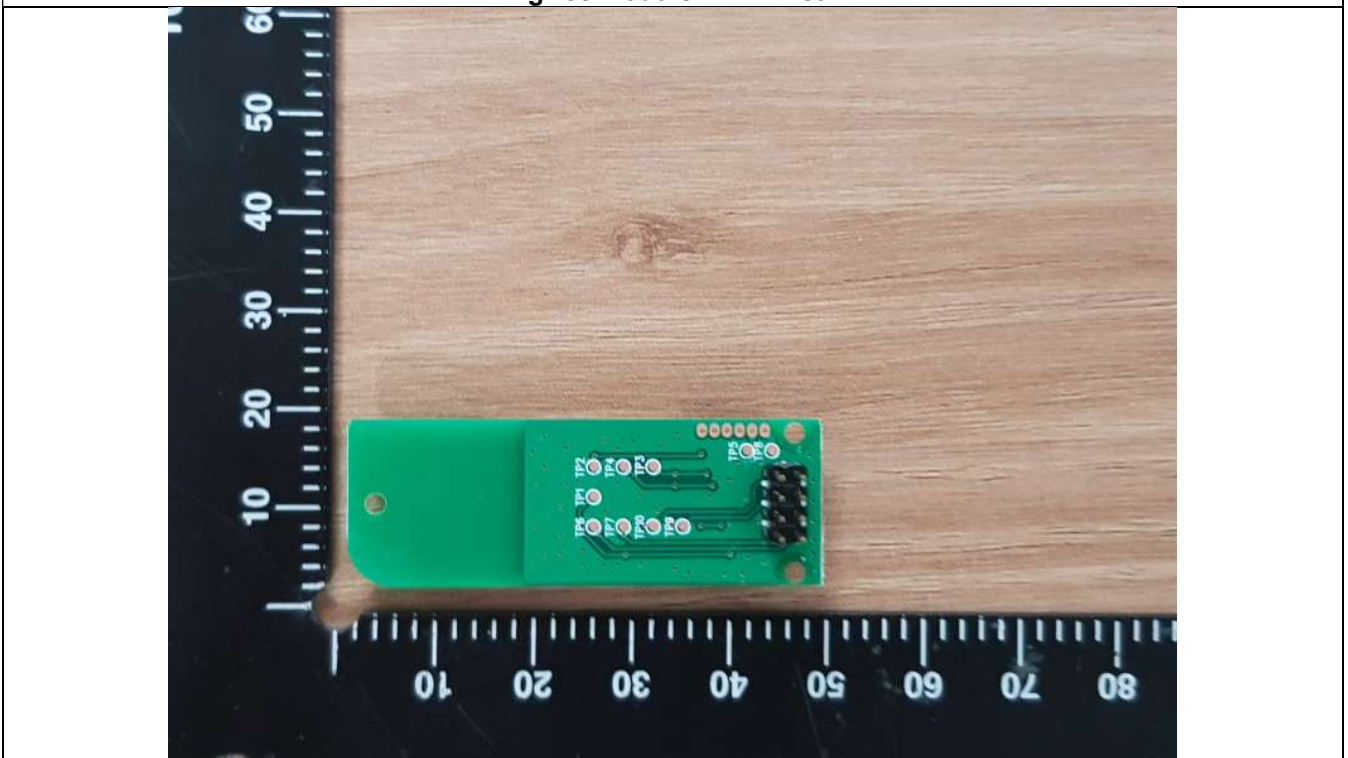
KEY Pad PCB - Rear



ZigBee Module PCB - Front



ZigBee Module PCB - Rear



RF Antenna (RFID)

