

## Internal Photos

Cover opened (Indoor\_1)



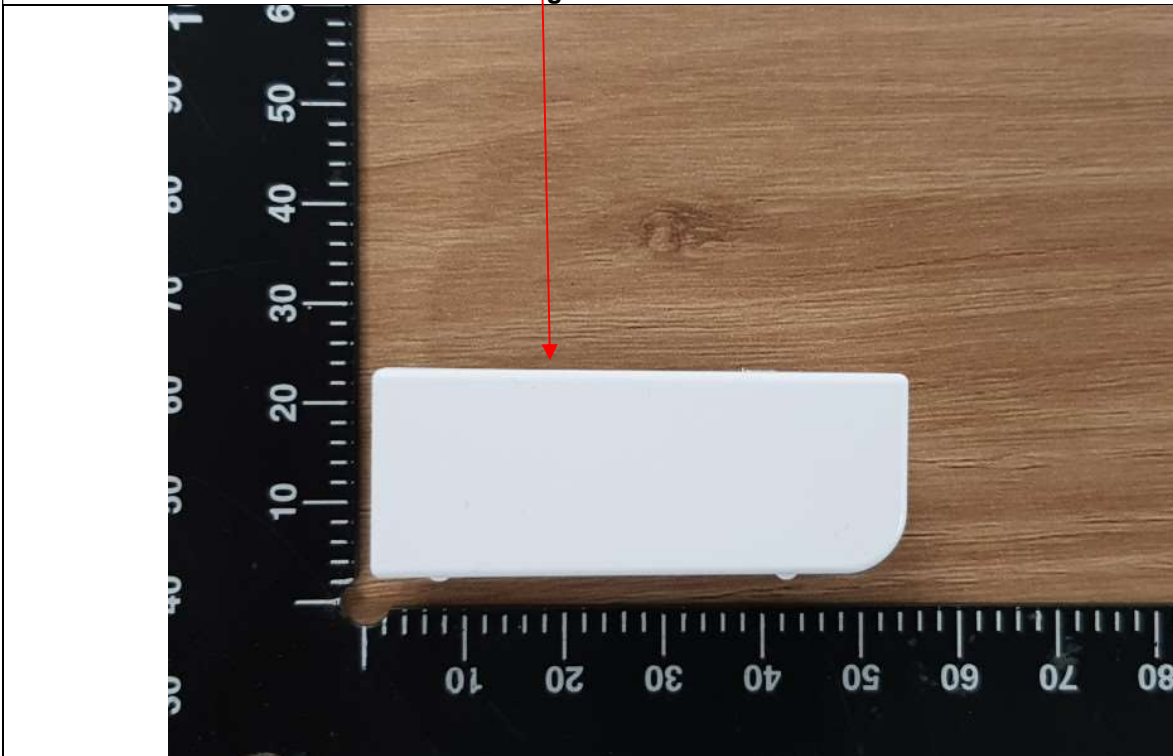
Cover opened (Outdoor)



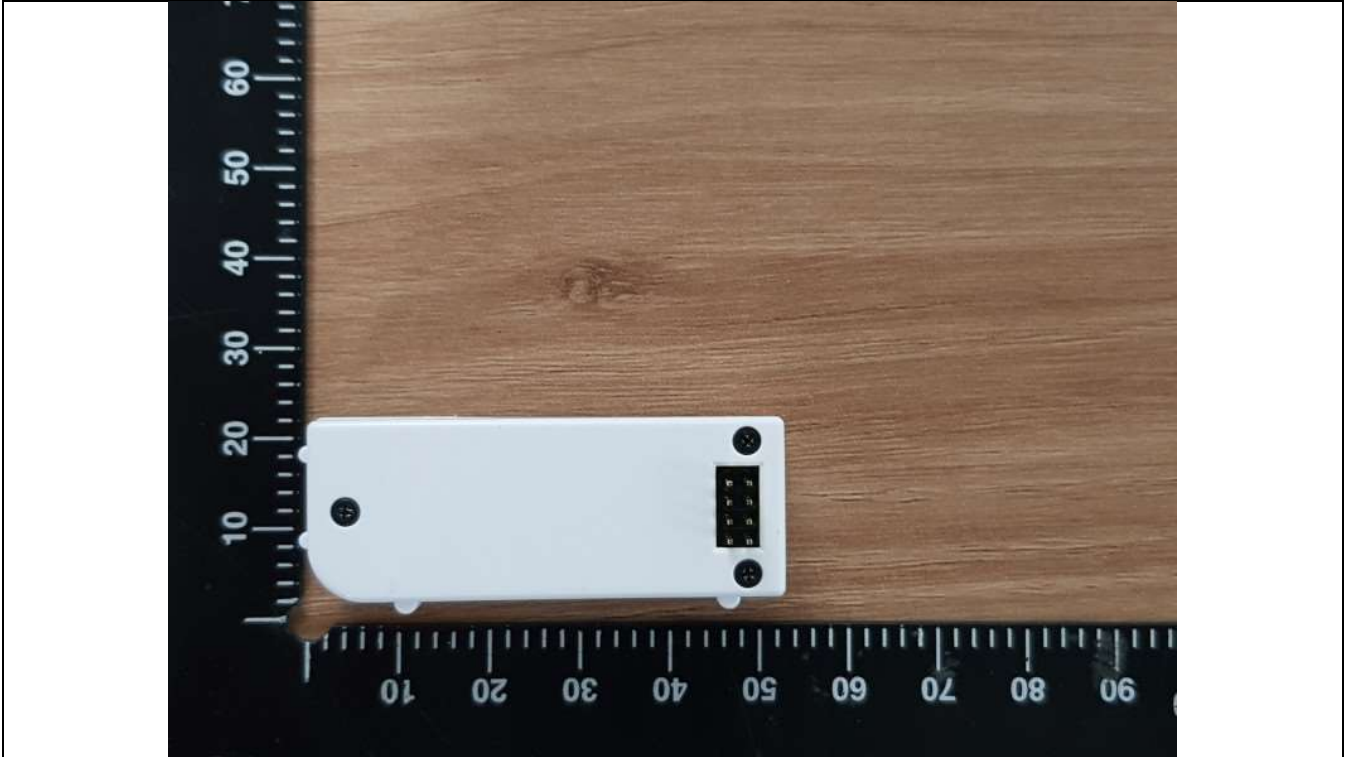
**Cover opened (Indoor\_2)**



**ZigBee Receiver - Front**

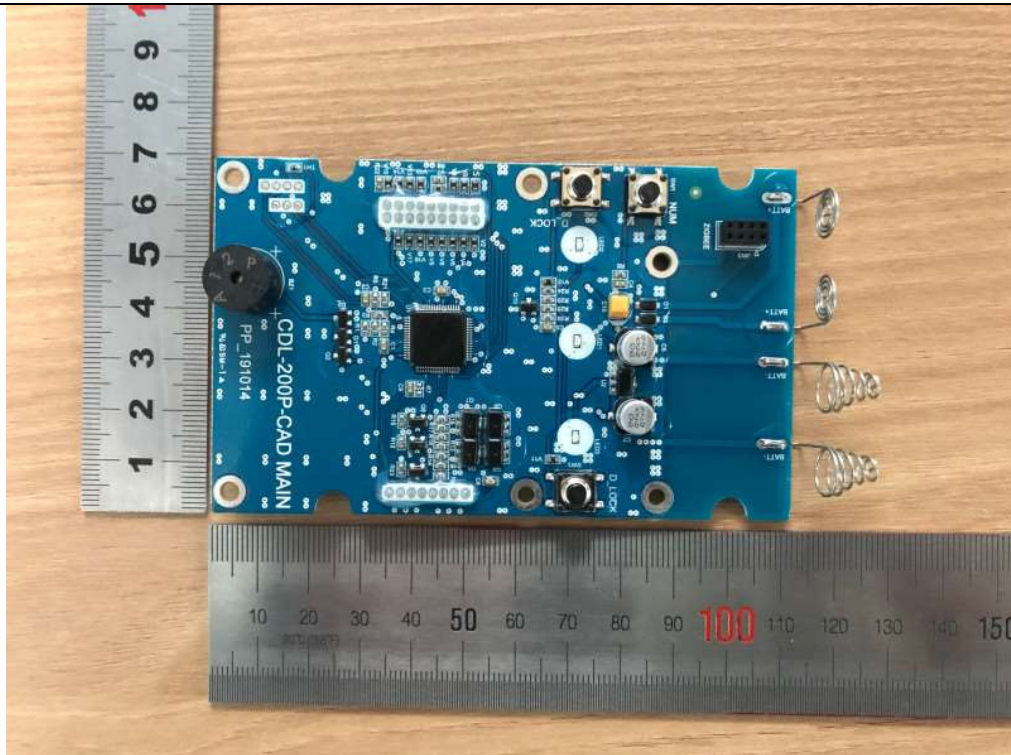


ZigBee Receiver - Rear

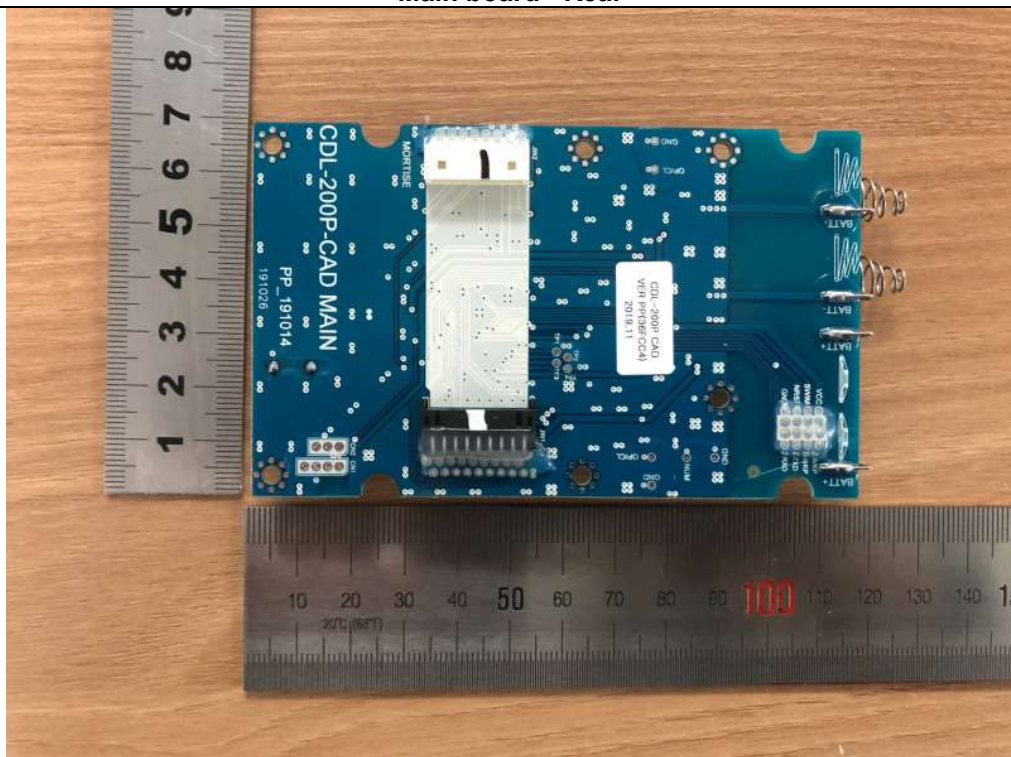




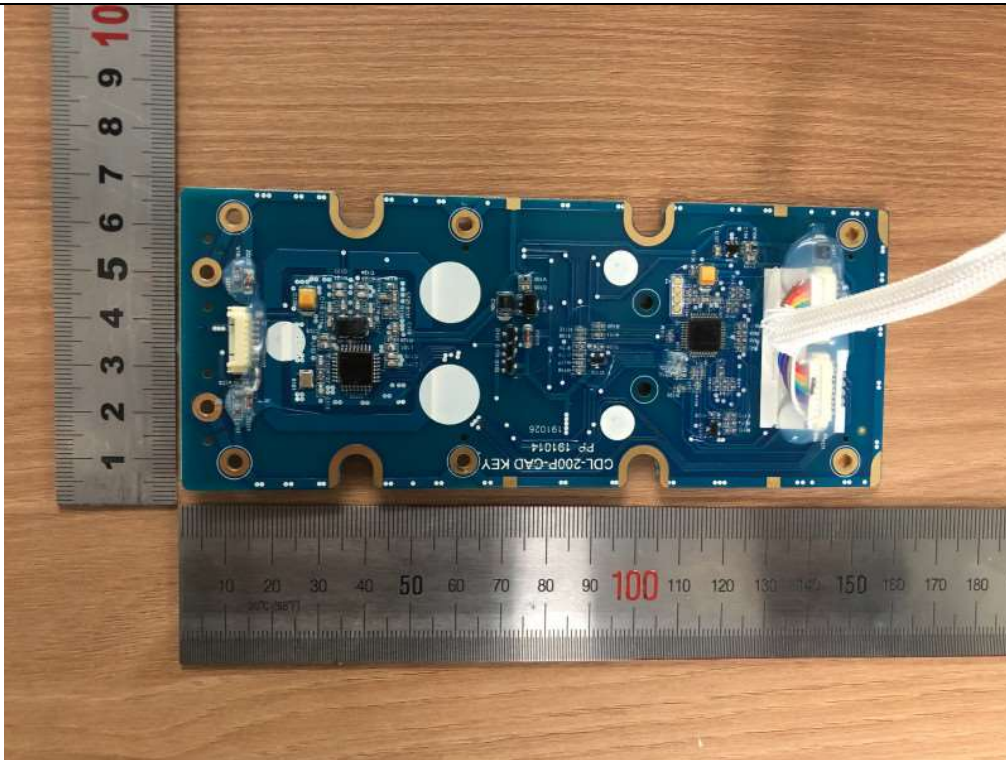
**Main board - Front**



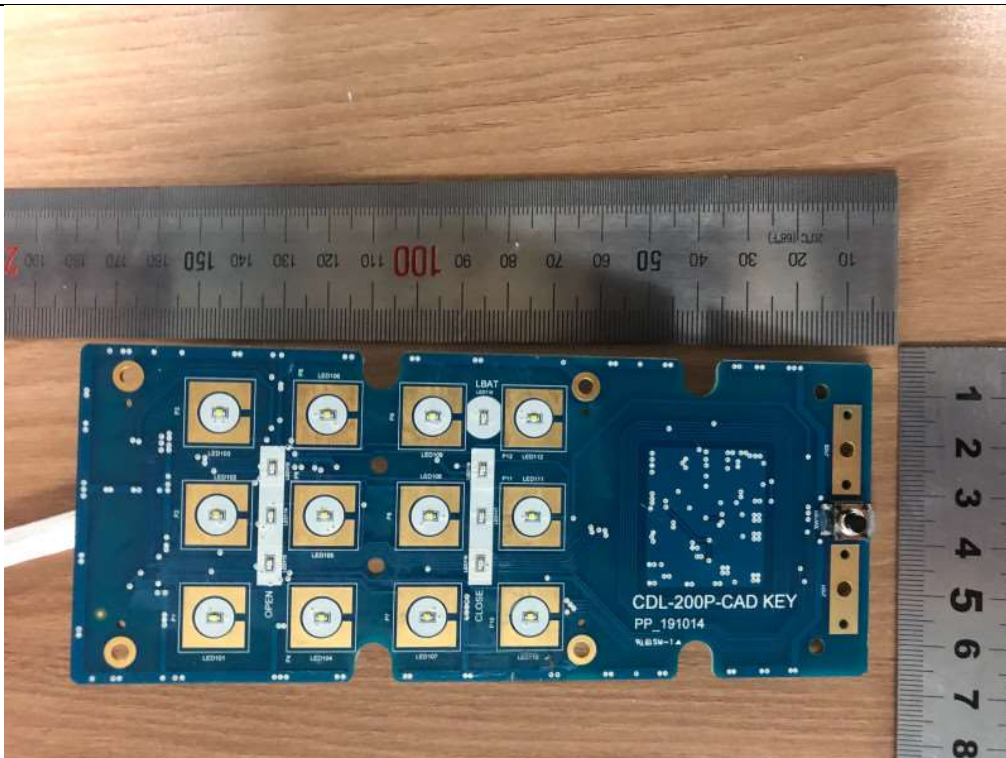
**Main board - Rear**



**KEY Pad PCB - Front**

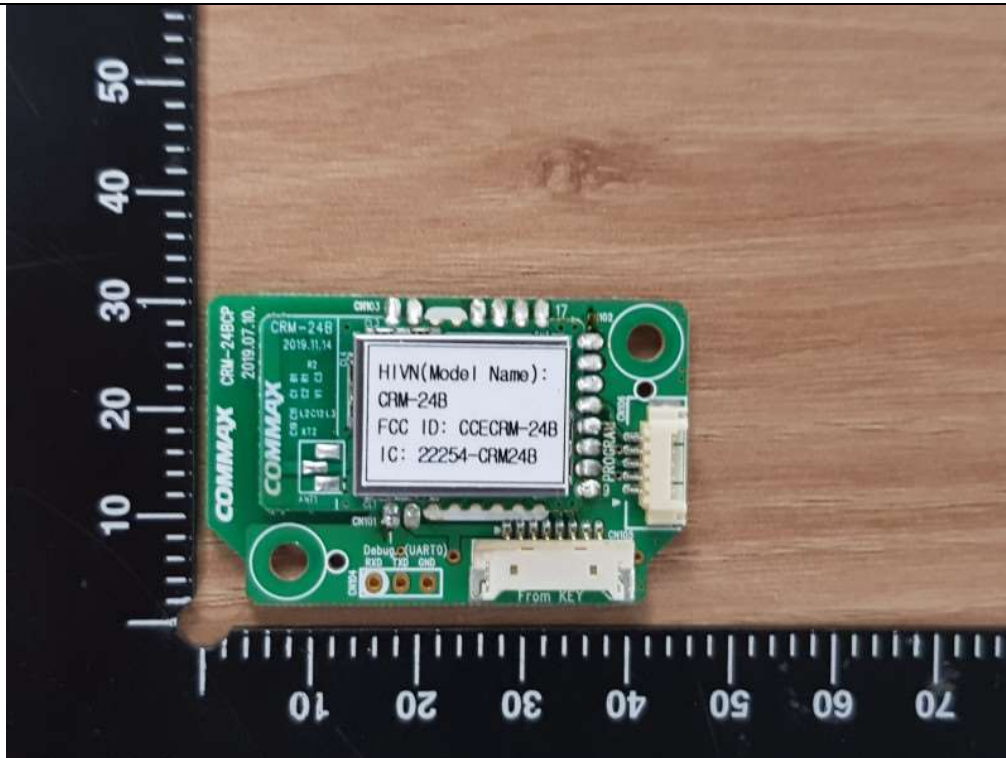


**KEY Pad PCB - Rear**

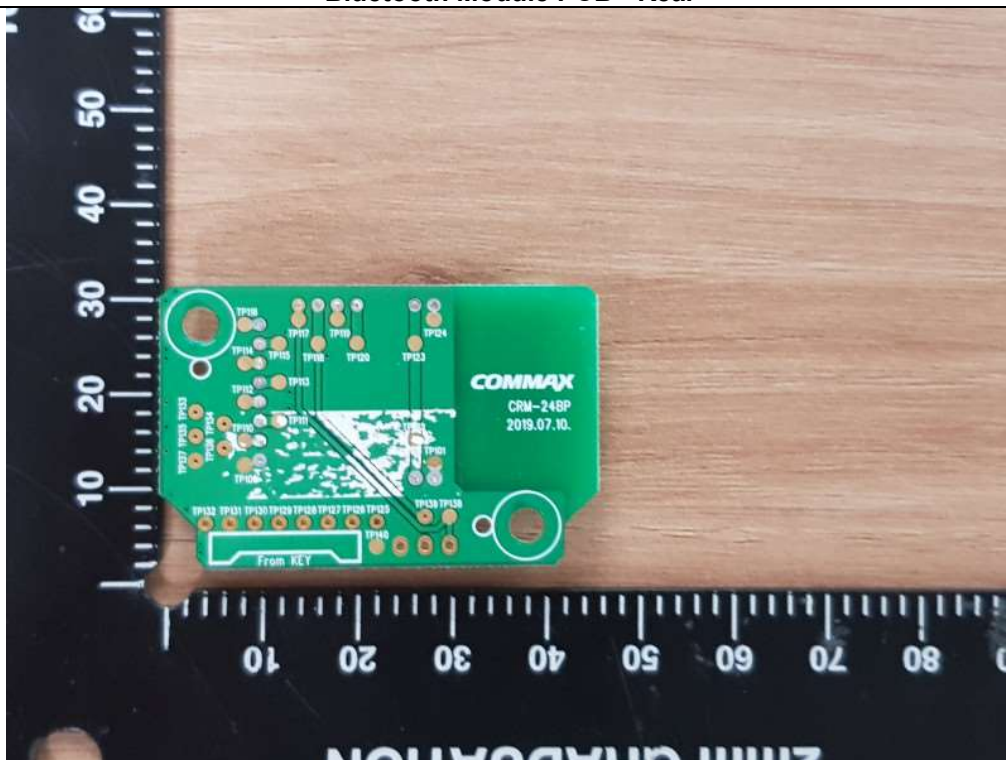




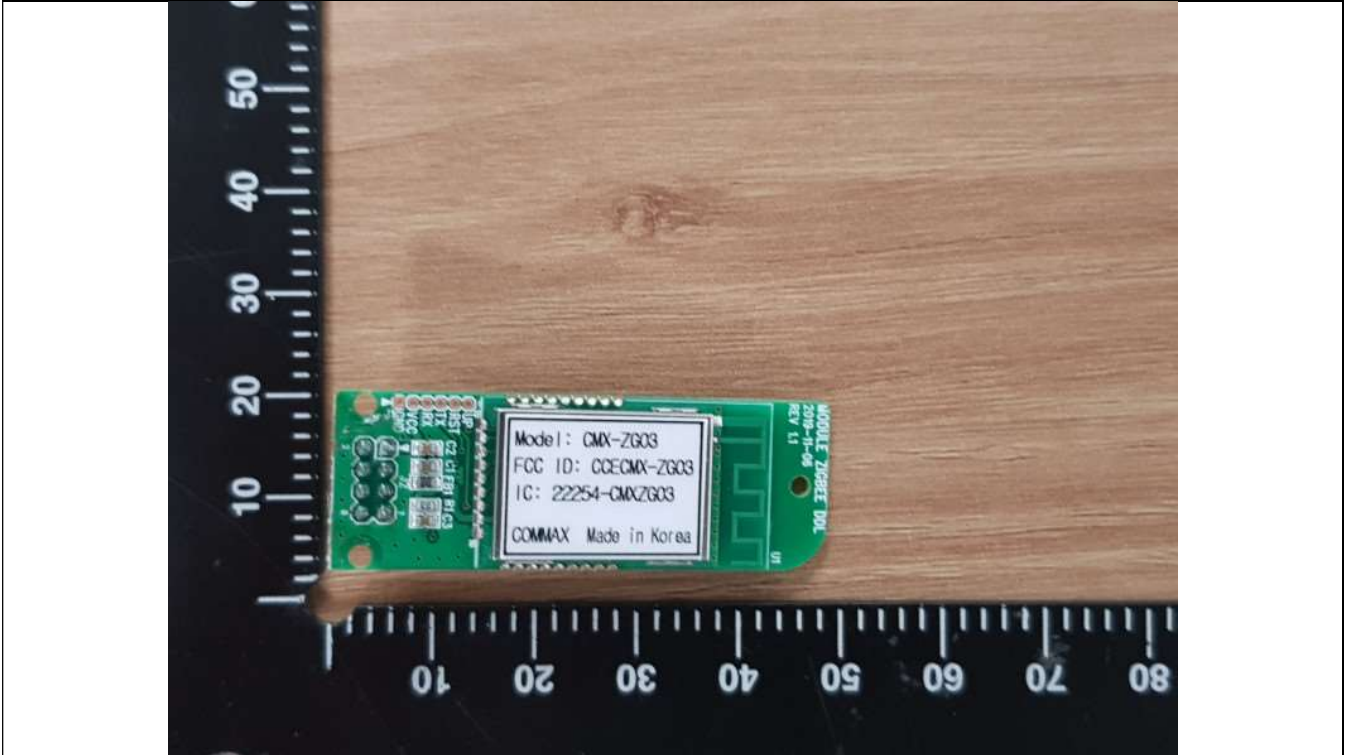
Bluetooth Module PCB - Front



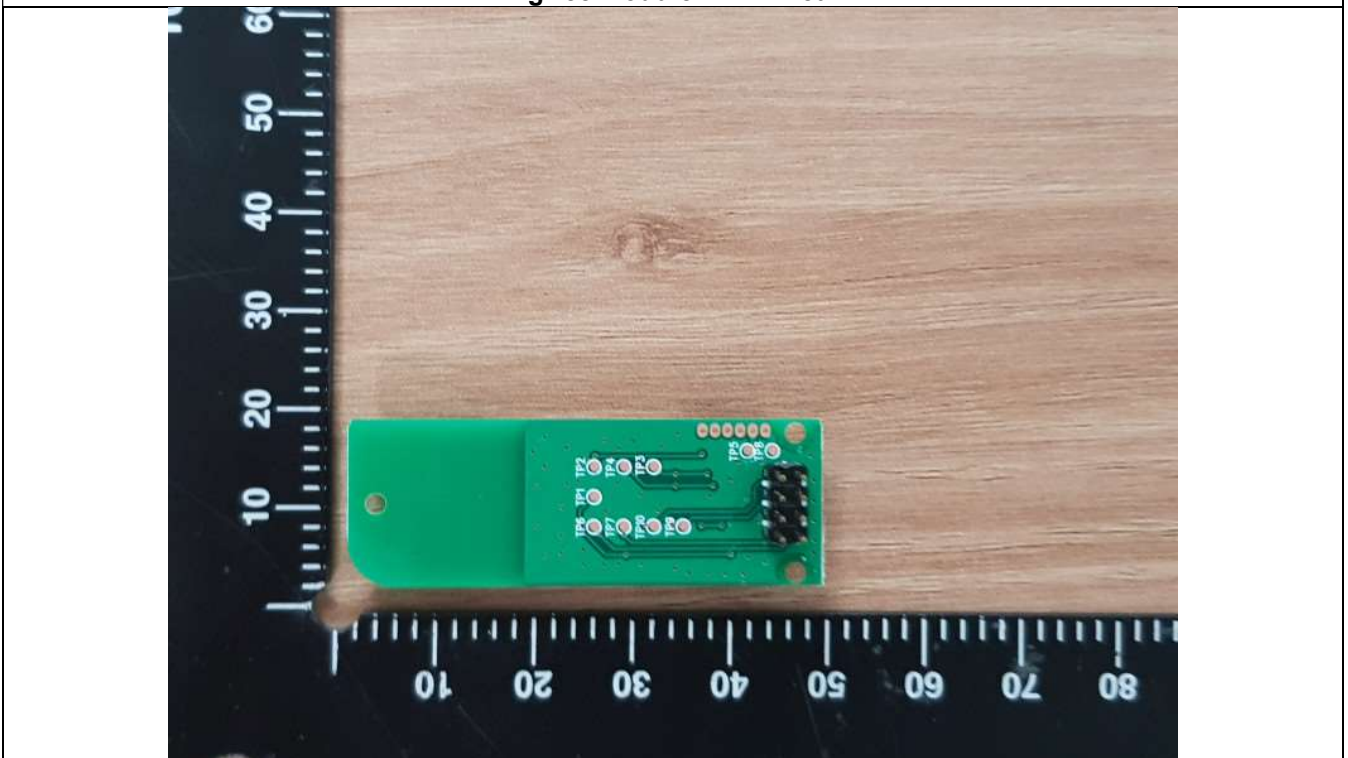
Bluetooth Module PCB - Rear



ZigBee Module PCB - Front



ZigBee Module PCB - Rear



RF Antenna (RFID)

